

DAILY INSPECTION AND PERIODICAL INSPECTION

To ensure operator safety during work and to maintain the performance of the machine, inspect the machine for the following items at starting daily work, every month and every year. (check the machine without load first, then check it with load)

- check each section of frame for fatigue, distortion, abnormal noise
- check each section for loose bolts or nuts
- check each rotational section, metal, bushing for abnormal abrasion
- check each wheel for abnormal flow & abrasion
- check operation of the brakes
- check lifting and lowering operation and other functions
- check hydraulic devices (cylinder piston, oil tank, etc.) for oil leak
- check pressure hose for abrasion, oil leak

ANNUAL REPLACEMENT OF PUMP OIL

- replace pump oil annually
- If the oil does not leak, it is not necessary to supply the oil for half a year to one year
- When replacing or supplementing oil, use oils listed below or equivalents

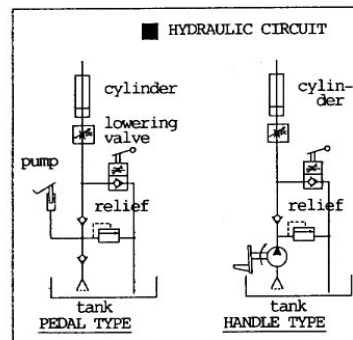
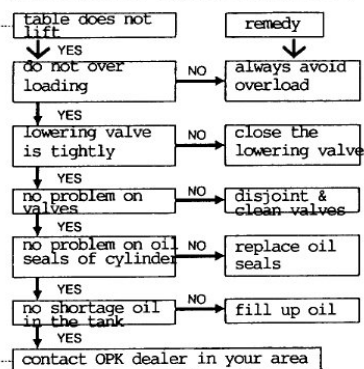
FOR PEDAL TYPE

- SHELL TERRAS OIL T22
- COSMO COSMO HYDRO HV22
- NISSEKI HYLAND WIDE 22

FOR HANDLE TYPE

- SHELL TERRAS OIL T46
- COSMO COSMO HYDRO HV46
- NISSEKI HYLAND WIDE 46

TROUBLESHOOTING FOR NON LIFTING TABLE

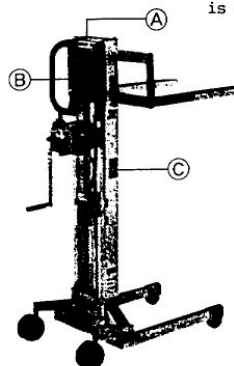


K LIFTER

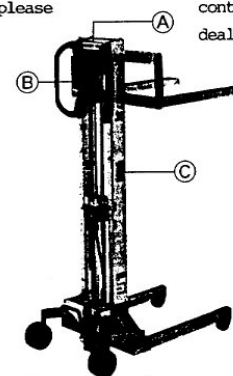
INSTRUCTION MANUAL

KL-P100-10T / 12T
KL-P100-10F / 12F

Thank you very much for selecting our Aluminum K LIFTER. This operation manual describes correct operation method to ensure safe operation, and also describes maintenance method to ensure prolonged service life. Carefully read this manual and fully understand the correct operation method before you use the K LIFTER. Always place this manual at an appropriate place. If this manual or warning label is missing, please contact our dealer.



HANDLE TYPE



PEDAL TYPE

(A) Capacity:100kg

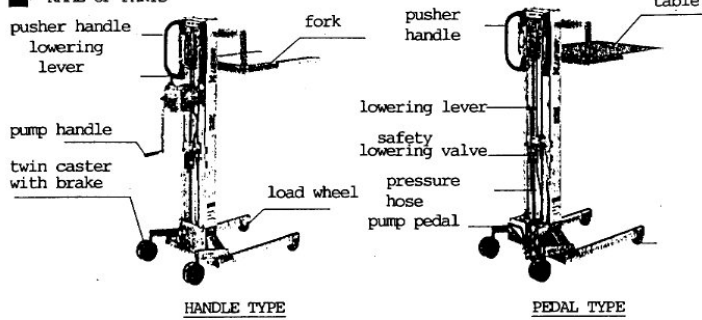


SPECIFICATIONS:

MODEL	CAPACITY (Kg)	LOWERING HEIGHT (mm)	LIFTING HEIGHT (mm)	TABLE FORK (mm)		OVERALL LENGTH (mm)	OVERALL WIDTH (mm)	OVERALL HEIGHT (mm)	STEERING WHEEL DIAMETER (mm)	LOAD WHEEL DIAMETER (mm)	NET WEIGHT (Kg)
				WIDTH X LENGTH	LOAD CENTER						
KL-P100-10T	100	150	1000	480 X 500	250	825	505	1200	100 X 64	75 X 25	25
						830					26
KL-P100-10F											25



■ NAME OF PARTS



CAUTION

If you misoperate the machine, you or any other person near the machine may be injured.

- ① Do not damage the high pressure hose. If the hose bursts, table will fall quickly.
- ② Do not maintain the table at upper position for long. It will be gradually lowered. Store the machine with lower the table.
- ③ Do not modify the machine
- ④ Wire rope is expendables. Replace it when you find unusual bended, line cut, etc.



WARNING

If you misoperate the machine, you or any other person near the machine may be injured. Operate properly with following instruction.



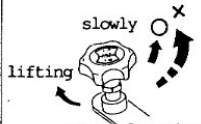
- Do not slip underneath the table



- Ensure the balance of loading



- Do not ride on the table

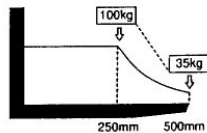


- sudden lowering is dangerous

- when moving the machine, table(fork) should be set at lower position
- Do not use the machine on slope, rough ground, bump on the road, or soft ground
- Do not load over maximum capacity
- when you park the machine, use the foot brakes

LOADING CAPACITY CHART

① MAX. CAP: 100kg



The table shows co-relation between move of loading center and loading capacity



Do not load over maximum capacity

It may damage table(fork) or mast, and cause turnover the load or the machine. Carry the load equally on the table(fork)

OPERATING INSTRUCTION

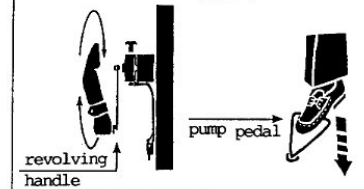
1 LIFTING THE TABLE (FORK)

- ① Put on the foot brakes
- ② Turn the lowering valve slowly to clockwise to close the valve (Do not close too tight)
- ③ Confirm the load should not exceed capacity (100 Kg). Pressure relief valve works when overload
- ④ Carry the load. Ensure the balance of loading. Do not load partially or concentrately. Carry the load equally on the table (fork)
- ⑤ (PEDAL TYPE) Pump the pedal for lifting the table

- foot brakes



- lifting the table (fork)



2 LOWERING THE TABLE (FORK)

- ① Put on the foot brakes
- ② Turn the lowering valve slowly to anti-clockwise to lower the table(fork). Ensure the balance of loading
- ③ Lowering speed can be adjustable by degree of turning the lowering valve. Do not lower the table (fork) suddenly.
- * If lower the table(fork) with load suddenly, Safety lower valve works, it will be lowered slowly

- lowering valve



3 HANDLING THE MACHINE

- ① Release the foot brakes
- ② Table(fork) has to be set at lower position
- ③ While handling the machine, do not make quick start, turn, or stop. Do not use the parking brakes while moving.

- handling the machine



HOW TO ASSEMBLE ALUMINUM K-LIFTER

Enclosed parts

① Spring lock washer	M8	2pcs.
② Button bolt	M8x55mm	2pcs.
③ Flat head bolt	M8x30mm	2pcs.
④ Washer	M8	2pcs.
⑤ Plastic cap		2pcs.
⑥ Plastic cap (large)		2pcs.
⑧ Washer	M6	2pcs.
⑨ Flat head bolt	M6x55mm	2pcs.
⑩ Plastic cap (small)		2pcs.

*⑦ ⑪ are already furnished on the machine

How to assemble

1. Furnish outriggers on the mast and tighten bolts and washers (①~④ on drawing) Then cover the bolts with plastic caps (⑤⑥)
2. Set up the machine. Take off 4 bolts (⑦) on top cover of the mast
3. Slide in the table from the top of the mast, and put the top cover back
4. Tighten the bolts and washers (⑧⑨) of wire hook plate to the table
Then cover the bolt with plastic cap (⑩)
5. Furnish the foot pedal and tighten the bolt (⑪)

* Torque Coefficient

M6	120Kg·cm (12.2Newton)
M8	230Kg·cm (23.5Newton)

