

INSCALE



Floor Scale

Operation Manual

Models FS (Domestic) & IN7620 (Imported)

Table of Contents

| | |
|---------------------------------------|---|
| Site Selection..... | 3 |
| Unpacking..... | 3 |
| Set-Up Instructions | 4 |
| Height and Level Adjustments..... | 5 |
| Ramp Installation..... | 5 |
| Parts List..... | 6 |
| Model and Serial Number Listings..... | 7 |

SITE SELECTION

Select a site for your new floor scale where it is least likely to be damaged by fork trucks and other material handling devices. Floor scale load cell weighing elements are prone to overload damage caused by side impacts, falling objects and excessive weight loads that exceed the rated capacity of the scale.

Your site should be:

- (1) Level within ¼”.
- (2) Free from vibration
- (3) Dry for standard, non-wash-down floor scales.
- (4) Clean of debris.
- (5) Out of the way of vehicle traffic patterns, unless installed in a pit while having a rated capacity that exceeds all loaded vehicle weights that could possibly drive onto or contact the scale.

The cable from the floor scale to the digital weight indicator should be run through conduit to protect it against possible damage. Running the interface cable through conduit is the best method of protection.

UNPACKING

- (1) Inspect your shipment for damage. If you see visible signs of damage, notify your carrier at once.
- (2) Remove your new floor scale from the shipping pallet.
- (3) If your digital indicator and scale feet shipped to you inside the top/side access of the floor scale, unpack the digital indicator and feet. If not, they will have shipped UPS.

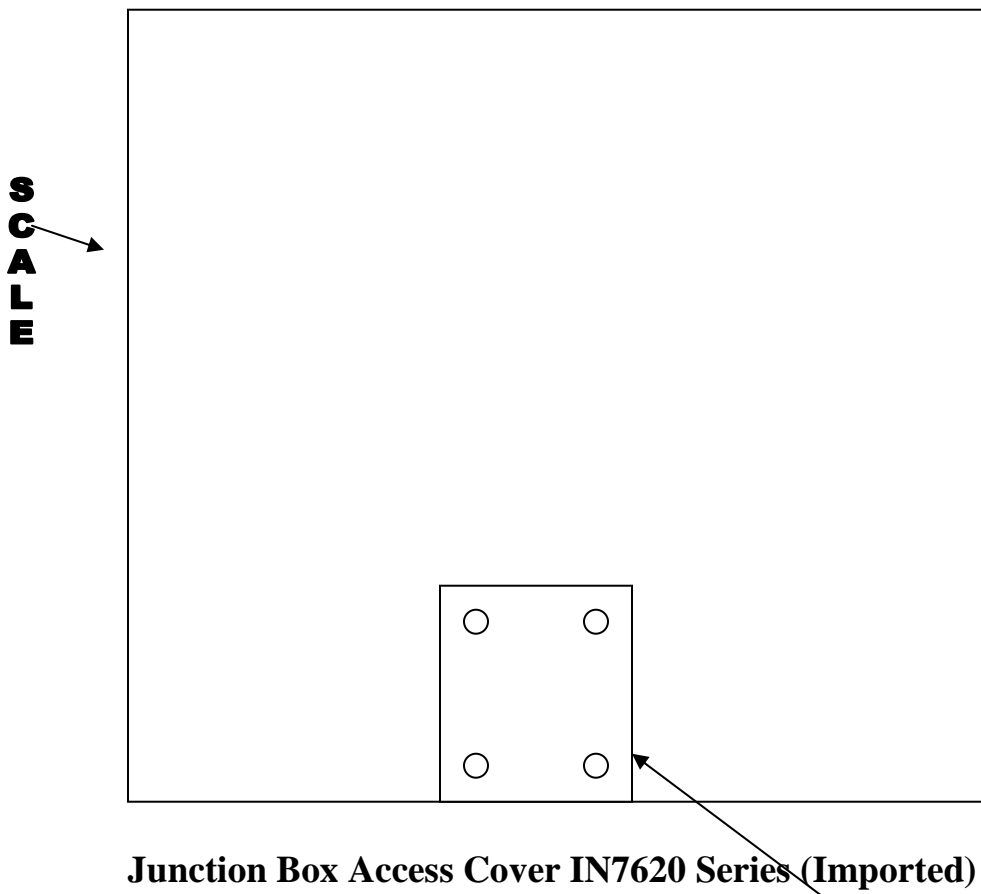
The indicator should include the following.

- A) Digital indicator
- B) Power cord & lead cable

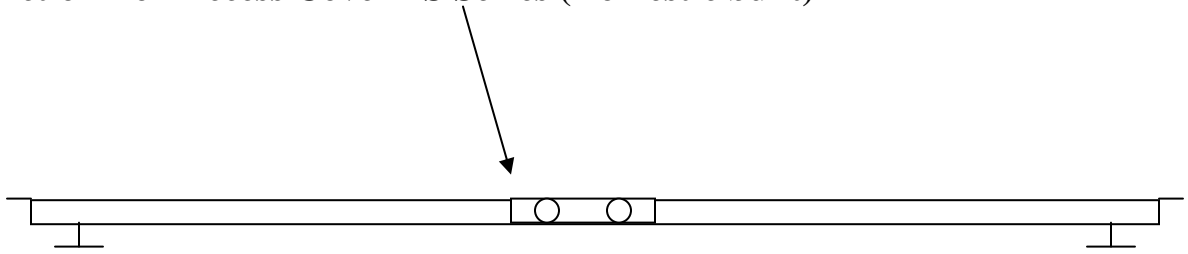
Set up Instructions

Your floor scale was shipped without the four threaded leveling feet installed to protect the cells against damage in transit. Lift the scale up and thread the feet into the cells until the top of the threaded stem is flush with the top of the cell. Place the scale on the ground so that you can ensure the scale is sitting solid on the ground and as level as possible. Adjust the feet as necessary. All four corners should be solid on the ground. The leveling feet are locked in place with lock nuts.

Plug the instrument cable connector into the digital weight indicator. This cable is in the floor scale junction box compartment of the floor scale. To access the instrument cable with connector, remove the screws from the access cover plate, and then remove the cover plate (*see drawing below*). You will find the instrument cable coiled up inside this compartment. Route the cable from the inside of this compartment, through the opening in the backside or bottom of the tray and out from under the scale to your digital weight indicator. Plug the instrument cable connector into the digital weight indicator. Plug the 110v. power plug from the digital weight indicator into an 110v. wall socket. For the LP-7510 press the on button located on the face of the indicator. You are now ready to weigh.



Junction Box Access Cover FS Series (Domestic built)

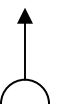
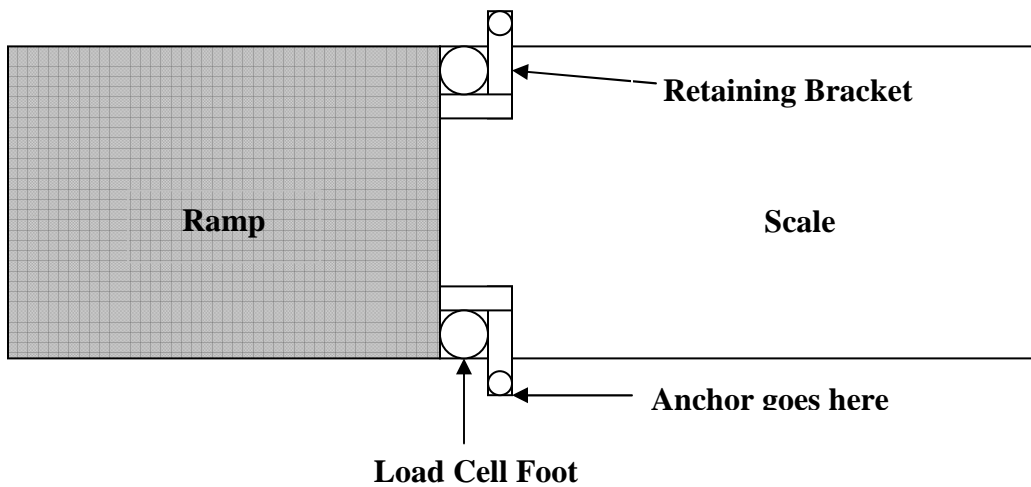


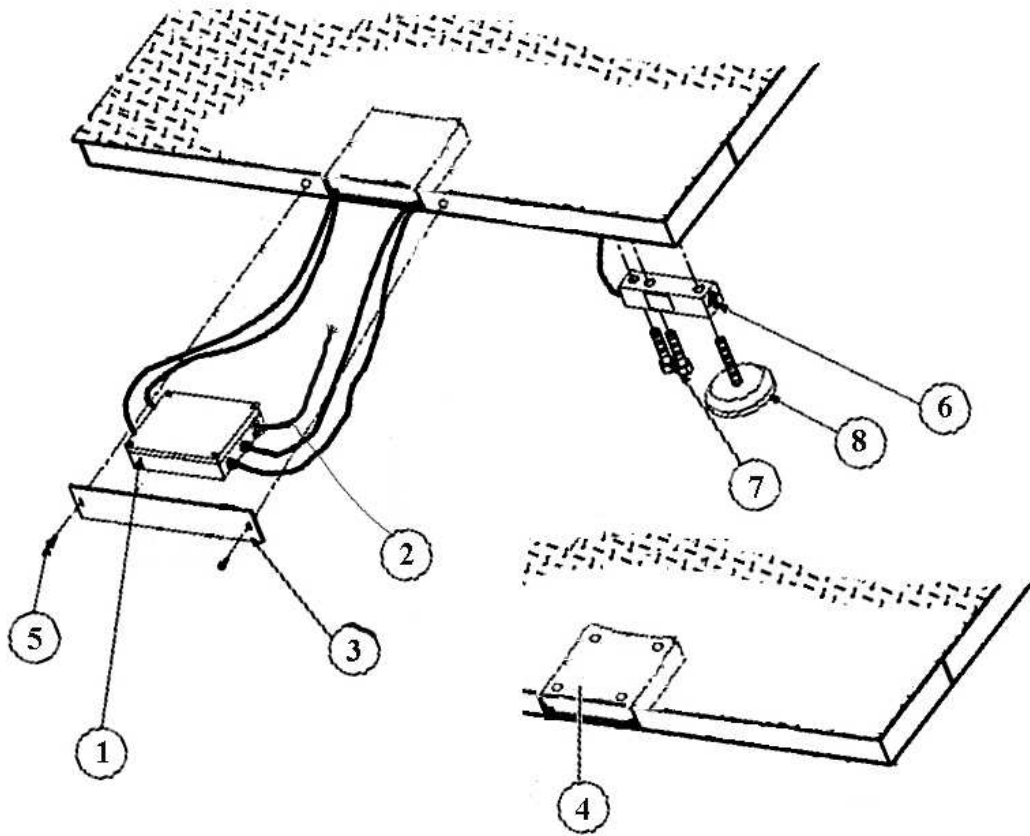
Height and Level Adjustments

1. Unlock the nuts on all four feet.
2. Using a pry bar, lift the weight of the scale base off the scale feet.
3. Make adjustments by screwing the feet counter clockwise.
All four feet should make firm contact with the floor.
4. Do Not screw feet counter clockwise more than ten turns.
5. Tighten lock nuts on feet.
6. Check your work.

RAMP INSTALLATION (for Optional Ramp)

1. Set your new floor scale in a desired location.
2. Position the Scale feet inside the Ramp Retaining Brackets as shown below. (Brackets are standard on domestic built ramps, imported ramps will have mounting tabs located on sides of ramp)
3. Anchor the ramp to the floor using two 1/2" X 3" anchors.





| Reference # | Description | Part # |
|-------------|---|-----------|
| 1 | Mild Steel 4-cell Box & Card | 53081 |
| 2 | Instrument Cable LP-7510 Quick D | 65088 |
| 3 | Access Plate FS Series Domestic only | 2915 |
| 4 | Access Plate IN7620 Series | 2920 |
| 5 | Access Plate Screws FS Series | 2925 |
| | Access Plate Screws IN7620 Series | 2930 |
| 6 | Load Cell- FS Series and IN7620 Series 5,000 lb. Capacity (2.5K cell) | 2995 |
| | Load Cell FS Series and IN7620 Series 10,000 lb. Capacity (5K cell) | 2997 |
| 7 | Load Cell Bolts | 2935 |
| 8 | Load Cell Foot -1,000 lb cap. through 5,000 lb cap. | 5041/5043 |
| | Load Cell Foot - 10,000 lb cap. | 5041/5043 |
| 9 | LP-7510 Digital Indicator | 6508 |

Model/Serial Number Locations

The model identification label is located on the side of the frame next to the junction box access plate. Include both model number and serial number when making inquiries or ordering parts.

Calibration

This scale was calibrated at the factory. DO NOT ATTEMPT TO CALIBRATE THIS SCALE.

Contact a state authorized Dealer in your area to place in service if using in a NTEP application, if the scale is a NTEP scale system.

WARNING:

Breaking, removing, or tampering with the lead seal that locks-out the calibration switch on the digital weight indicator will void all warranties. Calibration is performed by certified scale service agencies only. Call 812-232-3676 for a referral to an authorized scale service agency in your area or contact your local Weights and Measures office.