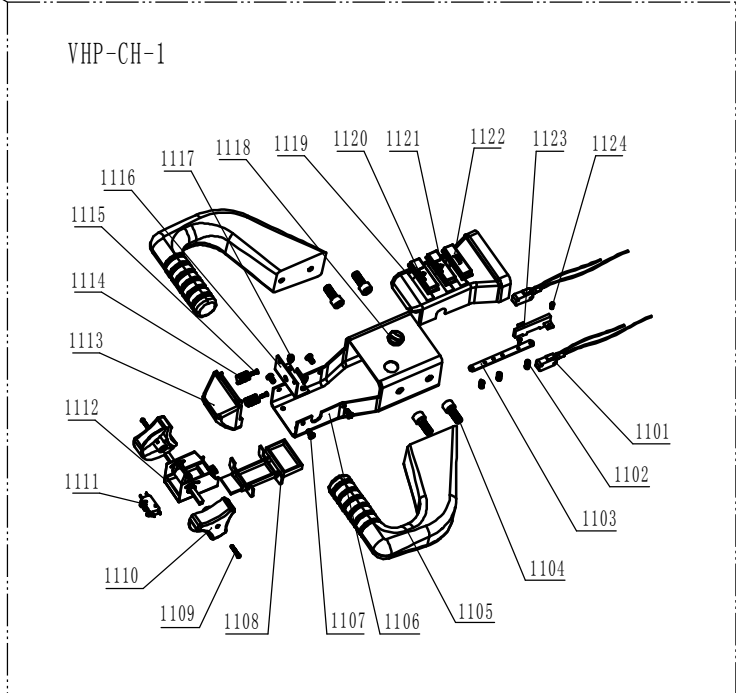
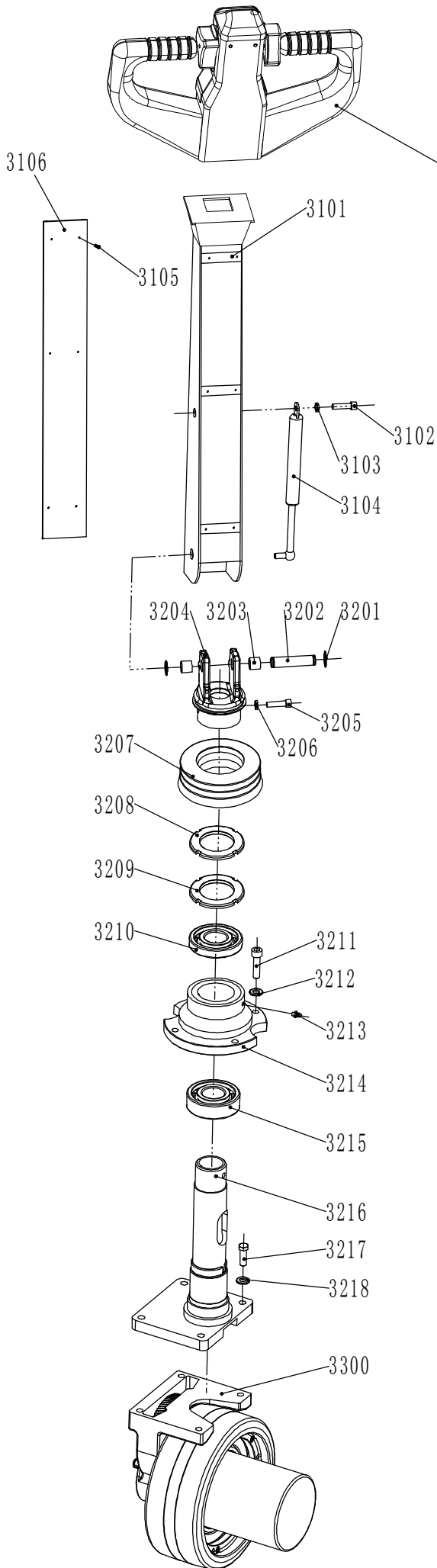


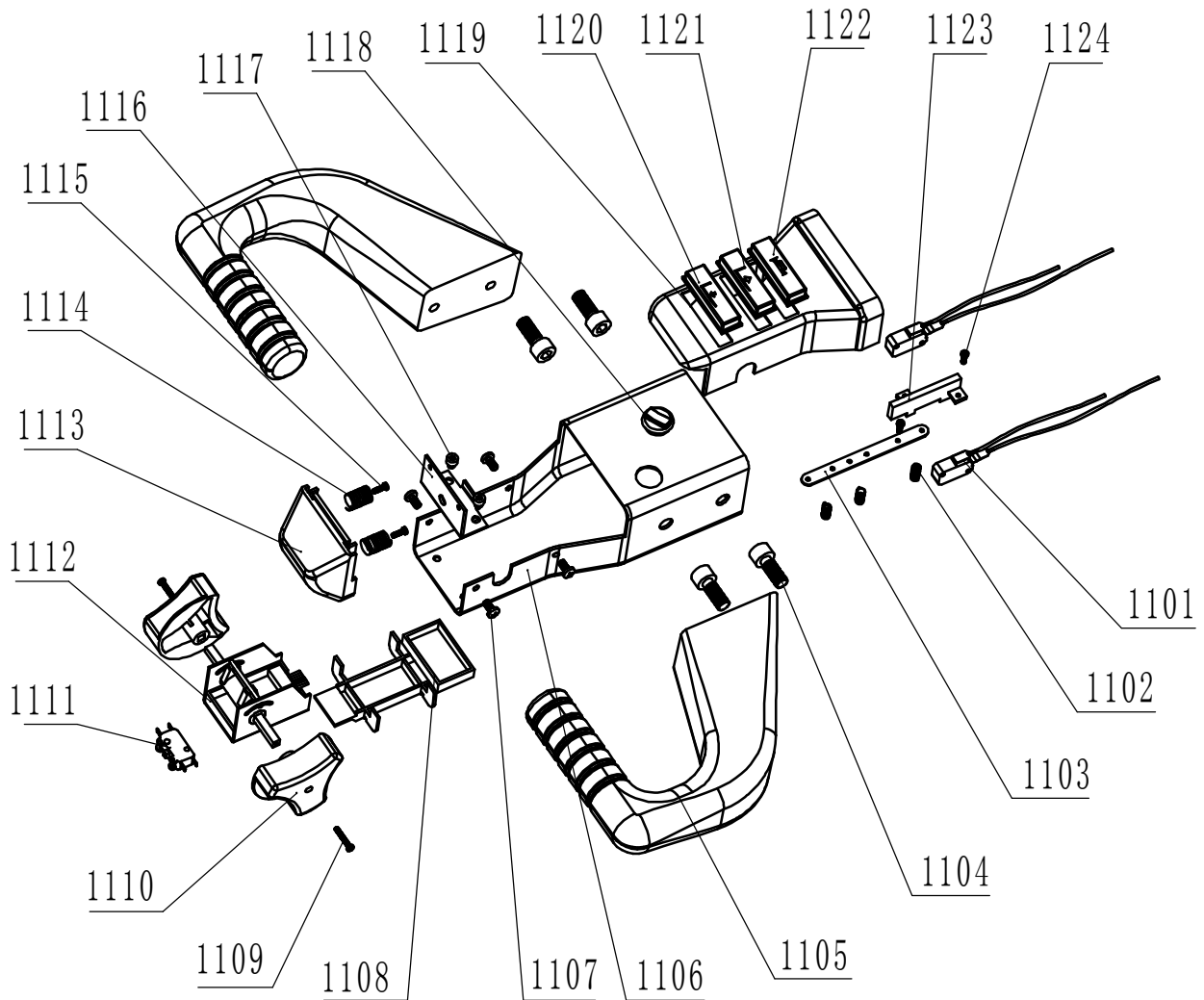
EPT - 45 - SCL STEERING ASSEMBLY



Handle assembly

Item	Part No.	Description	Qty.
3101	WPA-200-062000	tillar arm	1
3102	GB70-85	bolt M8×10	1
3103	GB859-87	spring washer 08	1
3104	PWS-100/25-030001	gas shock	1
3105	GB/T818-2000	bolt M5×6	6
3106	WPA-200-620006	tillar arm cover	1
3201	GB894.1-86	retaining ring φ20	2
3202	PWS-100/25-030002	pivot pin	1
3203	SF-1	sleeve bearing 016×20	2
3204	PWS-100/25-030003	handle coupler	1
3205	GB70-85	bolt M8×30	1
3206	GB859-87	spring washer 08	1
3207	PWS-100/25-030004	rubber boot	1
3208	WP-200B-060004	nut M56×1.5	1
3209	WPA-200-600001	washer M56×1.5	1
3210	GB278-82	ball bearing 61812	1
3211	GB70-85	bolt M10×40	4
3212	GB859-87	spring washer 010	4
3213	GB1152-89	grease zerk M8×1	1
3214	WP-200B-600002	bearing housing	1
3215	GB/T297-1994	bearing 33013	1
3216	WPA-200-610000	steering post	1
3217	GB5785-86	bolt M10×30	4
3218	GB95-85	flat washer 010	4
3300	DC24V/1200W	drive wheel assembly	1

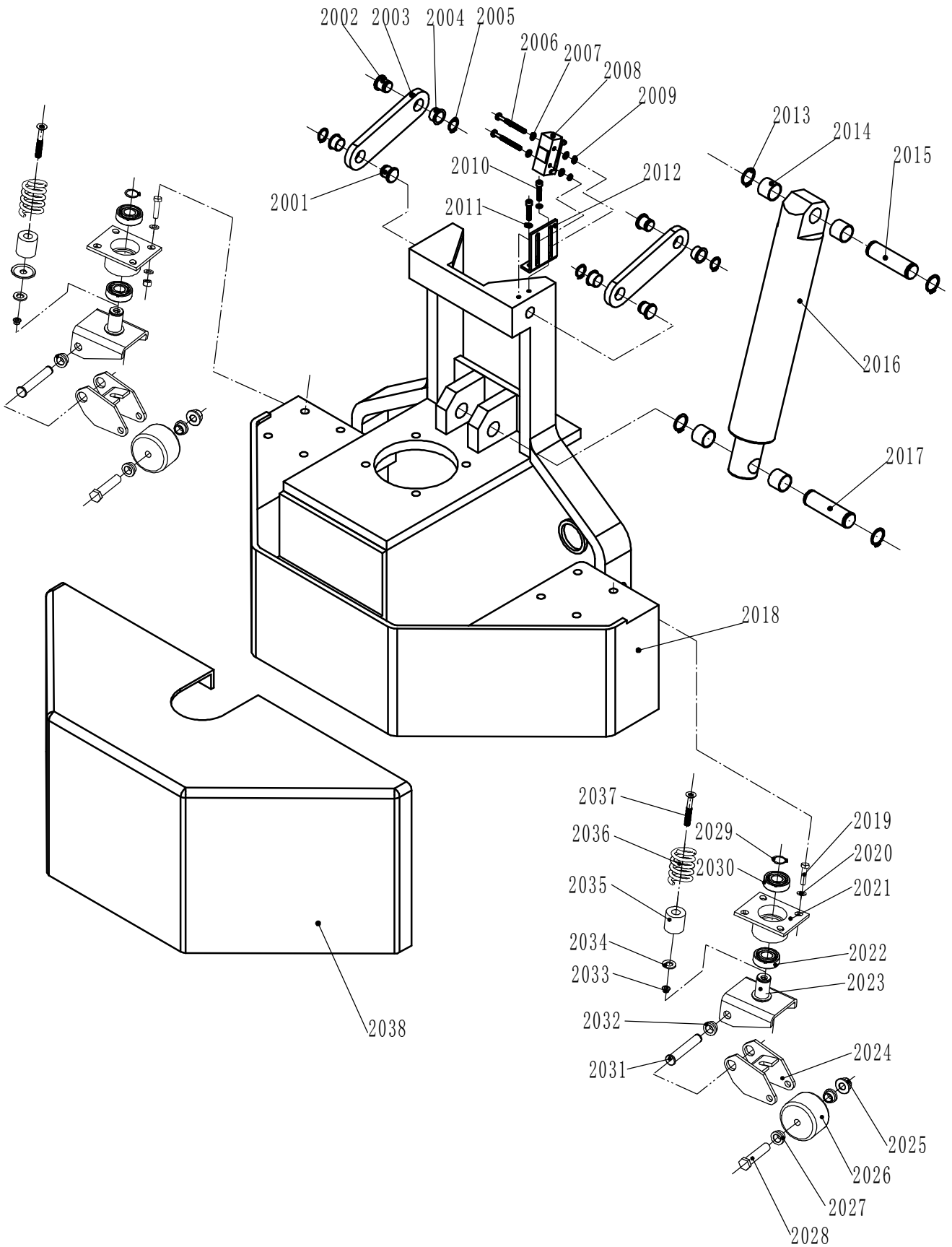
CH - 1 HANDLE ASSEMBLY



Item	Description	Qty.
1101	micro switch	3
1102	spring Ø6	6
1103	mounting strip	2
1104	bolt M10X25	4
1105	handle	2
1106	main frame	2
1107	screw M5X8	4
1108	throttle tray	1
1109	screw M3X20	2
1110	throttle knob	2
1111	micro switch	1
1112	throttle	1

Item	Description	Qty.
1113	switch	1
1114	spring Ø10	2
1115	screw M3X15	2
1116	operator mounting bracket	1
1117	bolt M5X5	2
1118	high / low-speed switch	1
1119	molded cover plate	1
1120	descend button	1
1121	raise button	1
1122	horn button	1
1123	mounting Board For Micro switch	1
1124	screw M3X10	14

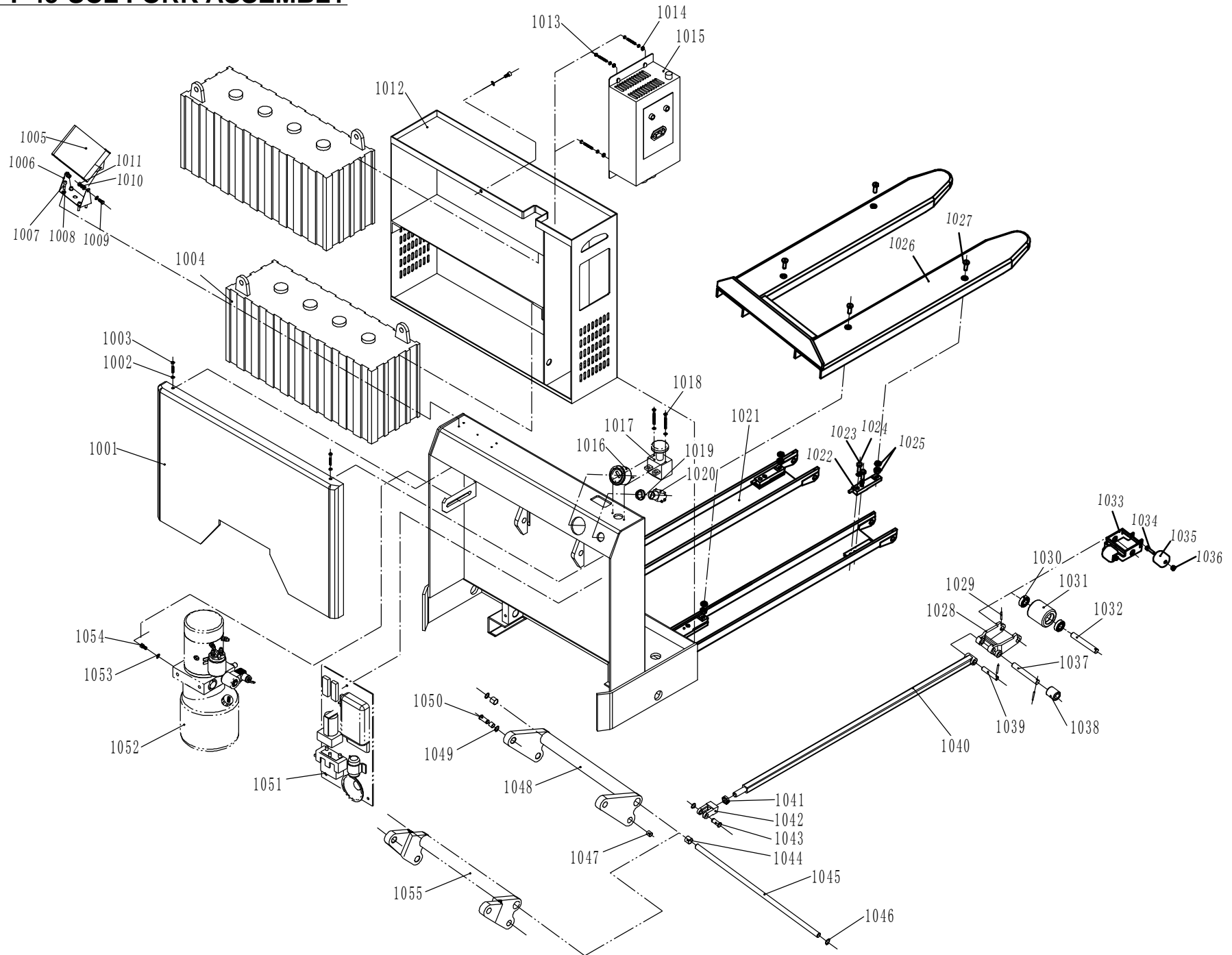
EPT - 45 - SCL - FRAME



FRAME PARTS LIST

Item	Part No.	Description	Qty.
2001	WPA-200-000006	rear pin	2
2002	WPA-200-000004	front pin	2
2003	WPA-200-000005	pin	2
2004	SF-1	sleeve bearing $\phi 16 \times 10$	4
2005	GB859-87	retaining ring $\phi 16$	4
2006	GB/T823-1988	bolt M5 \times 50	2
2007	GB/T97.1-20002	flat washer $\phi 5$	4
2008		travel limit switch	1
2009	GB/T6173-2000	nut M5	2
2010	GB70-85	cap screw M10 \times 25	2
2011	GB859-87	spring washer $\phi 5$	2
2012	WPA-200-300008	micro switch mounting base	1
2013	GB894.1-86	retaining ring $\phi 22$	4
2014	SF-1	sleeve bearing $\phi 22 \times 20$	4
2015	WPA-200-000007	cylinder pivot pin, upper	1
2016	WPA-200-400000	cylinder assembly	1
2017	WPA-200-000003	cylinder pivot pin, upper	1
2018	WPA-200-300000	main body	1
2019	GB/T6170-2000	bolt M8 \times 25	8
2020	GB/859-87	spring washer $\phi 8$	8
2021	WPA-200-400001	bushing	2
2022	GB/T297-1987	bearing 33205	2
2023	WPA-200-400002	swivel frame	2
2024	WPA-200-400006	wheel frame	2
2025	GB6170-86	nut M12	2
2026	WPA-200-400008	stabilizer wheel $\phi 76 \times 36$	2
2027	WPA-200-400007	stabilizer wheel bushing	4
2028	GB/T5782-1999	bolt M12 \times 80	2
2029	GB894.1-86	retaining ring $\phi 25$	2
2030	GB278-82	ball bearing 6205	2
2031	WPA-200-400005	pin	2
2032	SF-1	bearing 1616	4
2033	GB6170-86	nut M10	1
2034	GB859-87	spring washer $\phi 2$	2
2035	WPA-200-400003	urethane spring	2
2036	WPA-200-400004	spring	2
2037	GB/T2673-1986	screw M10 \times 65	2
2038	WPA-200-000009	machine cover	1

EPT-45-SCL FORK ASSEMBLY



FORK ASSEMBLY PARTS LIST

Item	Part No.	Description	Qty.	Item	Part No.	Description	Qty.
1001	WPA-200-SC-000008	front cover	1	1033	WPS-200-SC-241000	nose wheel frame	2
1002	GB/T97.1-20002	Flat Washer $\phi 5$	7	1034	GB/T 27-1988	bolt M10 \times 65	4
1003	GB/T823-1988	Bolt M5 \times 40	2	1035	WPS-130-011004	nose wheel	2
1004	DC12V/135Ah	Battery	2	1036	GB/T 6183.1-2000	nut M10	4
1005		scale display	1	1037	WPA-200-SC-100001	load roller frame pivot pin	2
1006	WPS-130SC-000002	scale mounting bracket	1	1038	WPA-200-SC-000012	load wheel	2
1007	GB/T818-2000	Bolt M6 \times 10	8	1039	WPA-200-100002	push rod pivot pin	2
1008	GB95-85	Flat Washer $\phi 6$	1	1040	WPA-200-SC-120000	push rod	2
1009	GB5781-86	screw M6 \times 30	1	1041	GB812-1988	nut M22 \times 1.5	2
1010	GB859-87	spring washer 6	1	1042	WPA-200-100003	push rod clevis	2
1011	GB/T41-2000	nut M6	4	1043	WPA-200-000004	clevis pin	2
1012	WPA-200-SC-500000	battery box	1	1044	SF-1	sleeve bearing $\phi 22 \times 20$	2
1013	GB/T823-1988	bolt M5 \times 30		1045	WPA-200-100005	trunion pivot shaft	1
1014	GB/T6170-2000	nut M5	3	1046	GB894.1-1986	retaining ring $\phi 16$	2
1015	VST124-25	charger	1	1047	SF-1	sleeve bearing $\phi 16 \times 20$	2
1016	DC24V	battery charger indicator	1	1048	WPA-200(680)-120000	trunion(for EPT-2547-30)	1
1017	ZDK31-25	switch body	1	1049	GB894.1-86	8retaining ring $\phi 22$	2
1018	GB/T823-1988	bolt M4 \times 50	2	1050	WPA-200-000003	pin	2
1019		key switch socket	2	1051	CD2207A-5102	electric control assembly	1
1020		key switch	6	1052	DC24V/1600W	power pack	1
1021	WPA-200-SC-200000	fork assembly	1	1053	GB859-87	spring washer $\phi 10$	2
1022		sensor	4	1054	GB70-85	bolt M10 \times 25	2
1023	GB5785-86	bolt M12 \times 45	4	1055	WPA-200(550)-120000	trunion(for EPT-2047-30)	1
1024	GB93-1987	spring washer $\phi 12$	8				
1025		washer	4				
1026	WPA-200-SC-220000	scale fork	1				
1027	WPA-200-SC-100005	bolt M12 \times 38	4				
1028	WPA-200-SC-240001	load roller frame	2				
1029	GB879-86	roll pin $\phi 5 \times 30$	2				
1030	GB/T 276-1994	ball bearing 6204Z	4				
1031	WPA-200-SC-242000	load wheel $\phi 80 \times 115$	2				
1032	WPA-200-110002	load roller frame pivot pin	2				