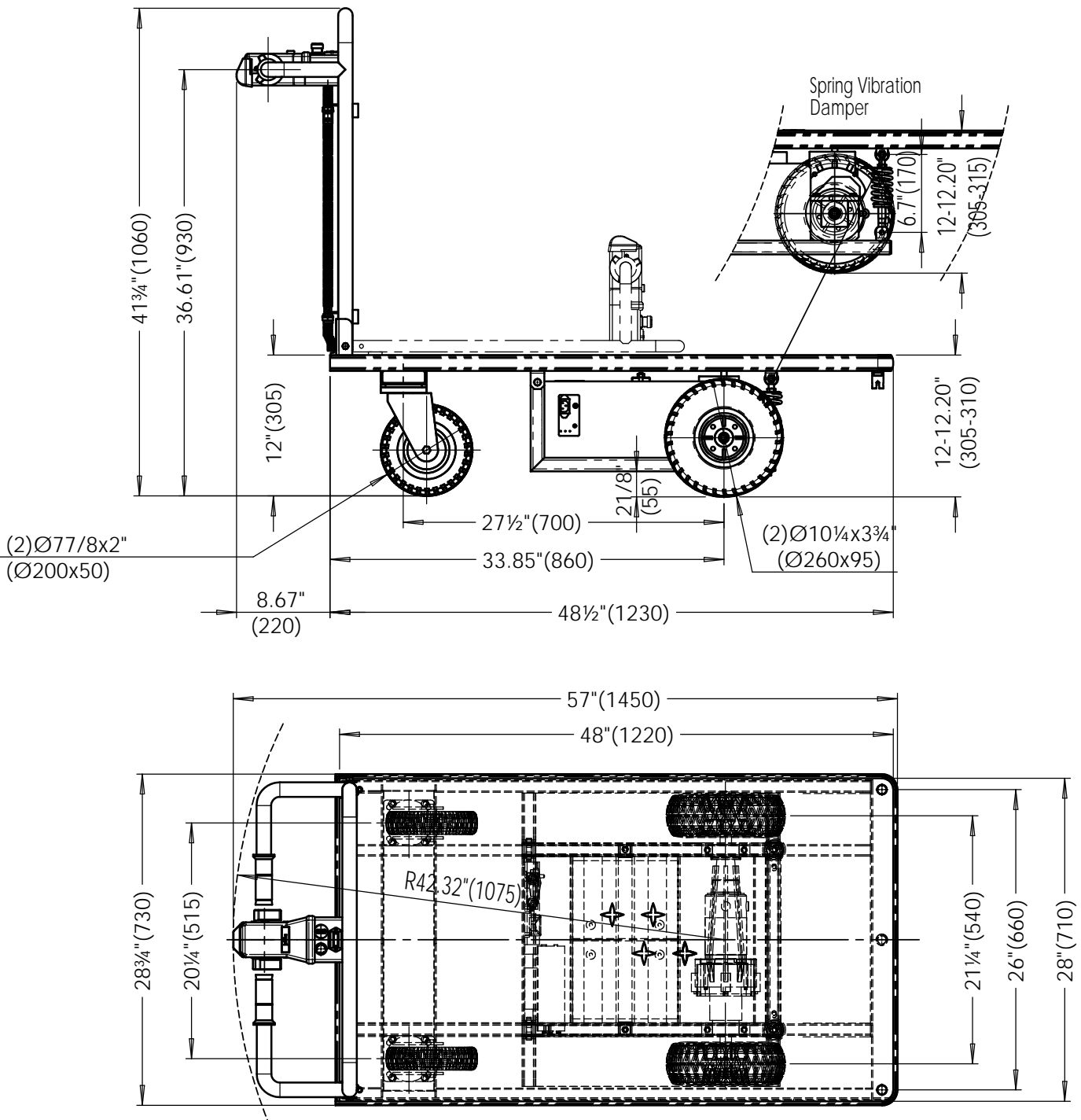


EMHC-2848-1 (DC Powered Electric Material Handling Cart)



Specifications:

1. Loading Capacity: 1,000 lbs (500Kgs)
2. Transaxle: C04 II-24/800, Gear Ratio 40:1
3. Drive Motor: DC24V/500W
4. Controller: CT1212-2501(Curtis 1212)
5. Handle: CH-1-1
6. Batteries: 2x12V/45Ah (AGM) - 99-139-002 (PS12450)
7. Charger: 2412SR (24 Volt, 6 AMP - 2412) - 21-034-007
8. Unloaded/Loaded Speed: 3.4m/h/2.8m/h
9. Unloaded/Loaded Grade Ability: 10%/5%.

VESTIL MANUFACTURING CORP.	
Model:	EMHC-2848-1
Description:	Electric Material Handling Cart (DC Powered)
Drawn By:	TM
Date:	02/02/2018