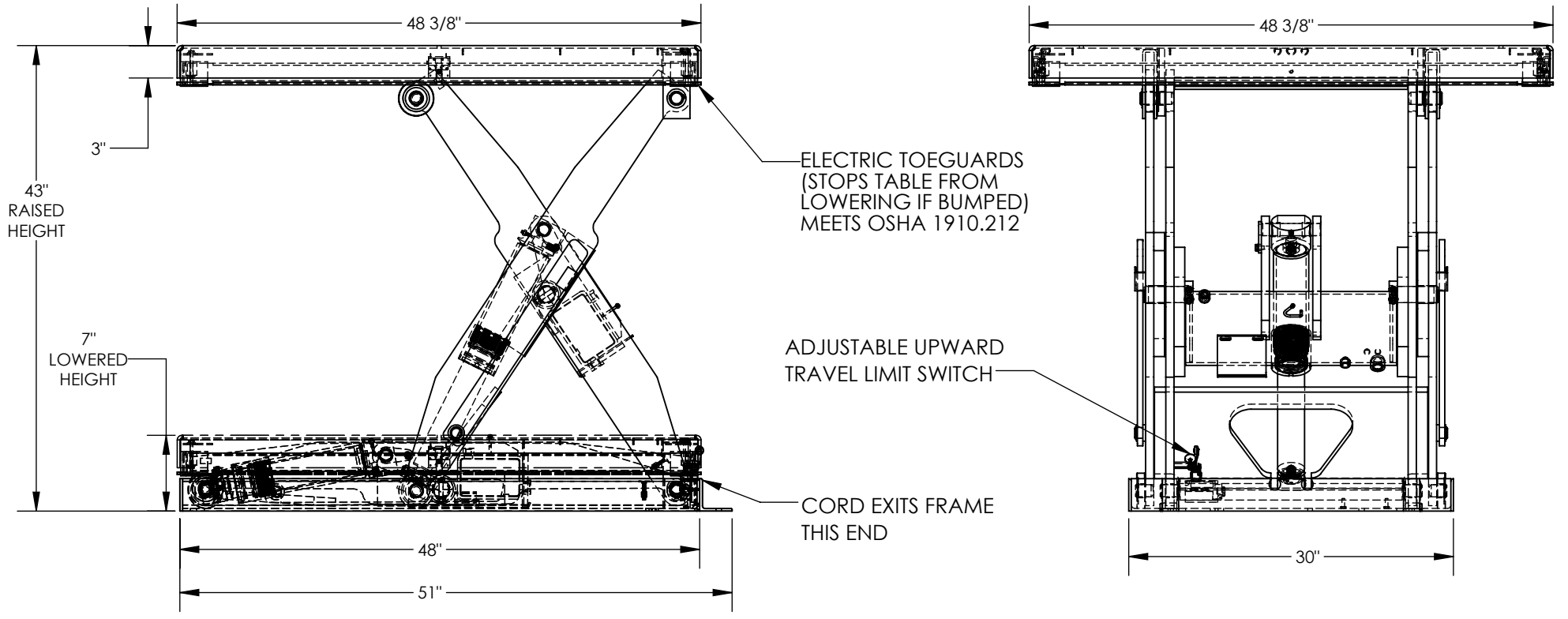


ELECTRIC HYDRAULIC SCISSOR LIFT TABLE - EHLT-4848-2-43

APPROX WEIGHT: 720.98 lbs.
DOES NOT INCLUDE WEIGHT OF POWER OR PACKAGING!!!

*** ANY ADDITIONS, DELETIONS, OR OMISSIONS MUST BE CORRECTED ON THIS DRAWING AS THIS DRAWING WILL BE CONSIDERED ALL INCLUSIVE ***

ALL GRAPHICS PROVIDED ARE FOR REFERENCE ONLY. IF CERTAIN DIMENSIONS ARE CRITICAL PLEASE VERIFY THOSE DIMENSIONS WITH YOUR SALESPERSON



DIMENSION TOLERANCE ± 1/4"

STANDARD FEATURES

MODEL NUMBER IS EHLT-4848-2-43
 PLATFORM WIDTH IS 48 3/8"
 PLATFORM LENGTH IS 48 3/8"
 PLATFORM RAISED HEIGHT IS 43"
 PLATFORM LOWERED HEIGHT IS 7"
 TABLE CAPACITY (EVENLY DISTRIBUTED)
 LOAD IS 2,000 LBS
 INTERNAL POWER UNIT
 CONTROL IS HANDHELD, 2 BUTTON, NEMA 4
 PENDANT WITH MINIMUM 8' USABLE COIL CORD
 SAFETY MAINTENANCE PROPS, DISPLACEMENT
 STYLE CYLINDERS INSTALLED ROD DOWN
 EMERGENCY SAFETY STOP HYDRAULIC FUSES
 IN ALL CYLINDERS
 UNITS HAVE 2' TEST LEAD AND PIG TAIL
 DURABLE LIQUID PAINT BLUE FINISH

PLEASE CIRCLE SPECIFICATIONS:

POWER	AC	DC (12V)	AIR/OIL
MOTOR VOLTAGE	<u>115</u>	208	230 460
DEDICATED CIRCUIT REQUIRED 60Hz			
MOTOR PHASE	SINGLE	THREE	
CONTROL	HAND	FOOT	

DECK TOLERANCE ± 1/2"
 TABLE HEIGHT TOLERANCE ± 1/2"
 DECK FLATNESS ± 1/4"

SPECIAL FEATURES

NONE

APPROVAL

I, THE UNDERSIGNED, AGREE THAT THE PRODUCT AS REPRESENTED SATISFIES DESIGN AND DIMENSION REQUIREMENTS. I ALSO ACKNOWLEDGE MY DUTY TO CONFIRM PRODUCT AND INSTALLATION COMPLIANCE WITH ALL APPLICABLE FEDERAL, STATE AND LOCAL REGULATIONS AND STANDARDS.

UNITS REQUIRING APPROVAL DRAWINGS OR MODIFIED ARE NON-RETURNABLE

As drawn As marked

Signed: _____ Date: _____

Printed Name: _____

LEAD TIME WILL START UPON RECEIPT OF SIGNED APPROVAL DRAWING

DISTRIBUTOR'S NAME:		P.O.#
VESTIL MANUFACTURING		X
DRAWN BY: BCN		W.O.#
DATE: 8/28/2017		X
REFERENCE: X	SCALE: 1:14	SALES: X
QUOTED LEAD TIME: X	QUOTE # X	FILE NAME:
		24-007-041-002