

05/25/01

**INSTRUCTIONS FOR :
OPERATION OF THE MANUAL DRUM LIFTER-ROTATOR-TRANSPORTER**

VESTIL MFG. CO. / T&S EQPT. CO.

*PRODUCTS USED ON:
DRUM-LRT*

The following instructions are to be used for proper operation of the model DRUM-LRT.

READ ALL INSTRUCTIONS BEFORE PROCEEDING!

Only trained and qualified service personnel should work on this equipment!

Lock out all potential energy sources before attempting this installation!

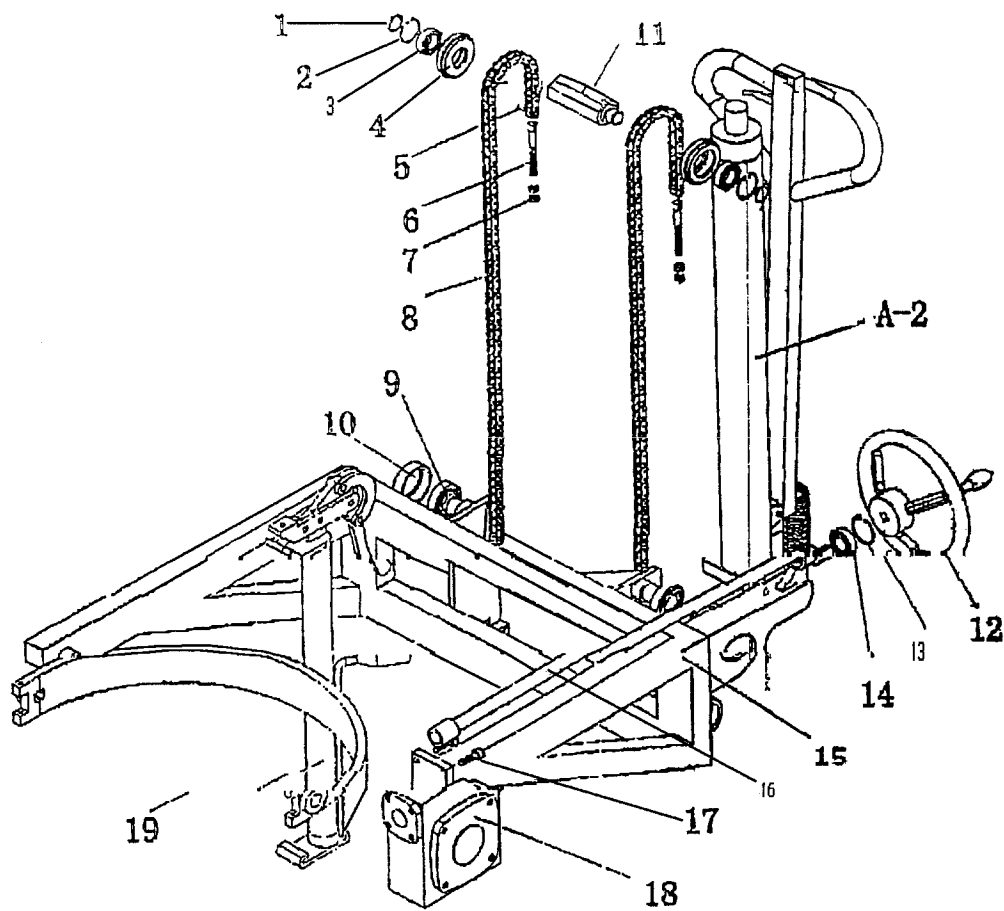
1. The manual DRUM-LRT is to be operated much like a standard pallet jack. The drum carriage is raised by pushing the release lever in the push handle fully forward and then jacking the handle up and down. To lower the drum carriage, pull the lever in the push handle fully back. With the push handle lever in the middle position, the carriage will neither lower nor raise, even when the handle is pumped.
2. To attach a drum to the drum carriage, raise the locking mechanism at the top of the carriage until it is slightly above the height of the drum's top rim. Maneuver the unit up close to the drum. Open the jaw of the locking mechanism, then lower it until the lower part of the jaw is just at the bottom edge of the top rim of the drum. Push the unit up against the drum. If necessary, raise the carriage slightly so that the bottom of the jaw is even with the bottom of the top rim of the drum. Lock the jaw onto the top rim. Pump the push handle to raise the drum several inches off the floor. Lower the carriage foot by pushing down on the formed handle on the back side of the carriage. When the foot is below the bottom of the drum, rotate the foot so it protrudes under the drum, and release the handle. If there is a web belt to secure around the front of the drum, adjust and fasten it before tilting. The drum is ready to be rotated.
3. To rotate the drum, simply crank the hand wheel in the proper direction for the desired rotation of the drum. It is capable of rotating continuously through a 360 degree revolution.
4. To release the drum, rotate it to the vertical position. Push down on the handle attached to the carriage foot and rotate the foot to the side, out from under the drum. Pull the push handle lever back until the drum lowers to the floor. Release the locking handle to disengage the drum and back the lift away.
5. The carriage's locking jaw can be adjusted for varying thicknesses of drum lips by turning the hex head bolt on top of the jaw either in or out for thinner or thicker lips, respectively.

Cautions:

- Be sure the drum's top lip is securely locked in the carriage jaw and the bottom lip is retained by the carriage foot before tipping the drum.

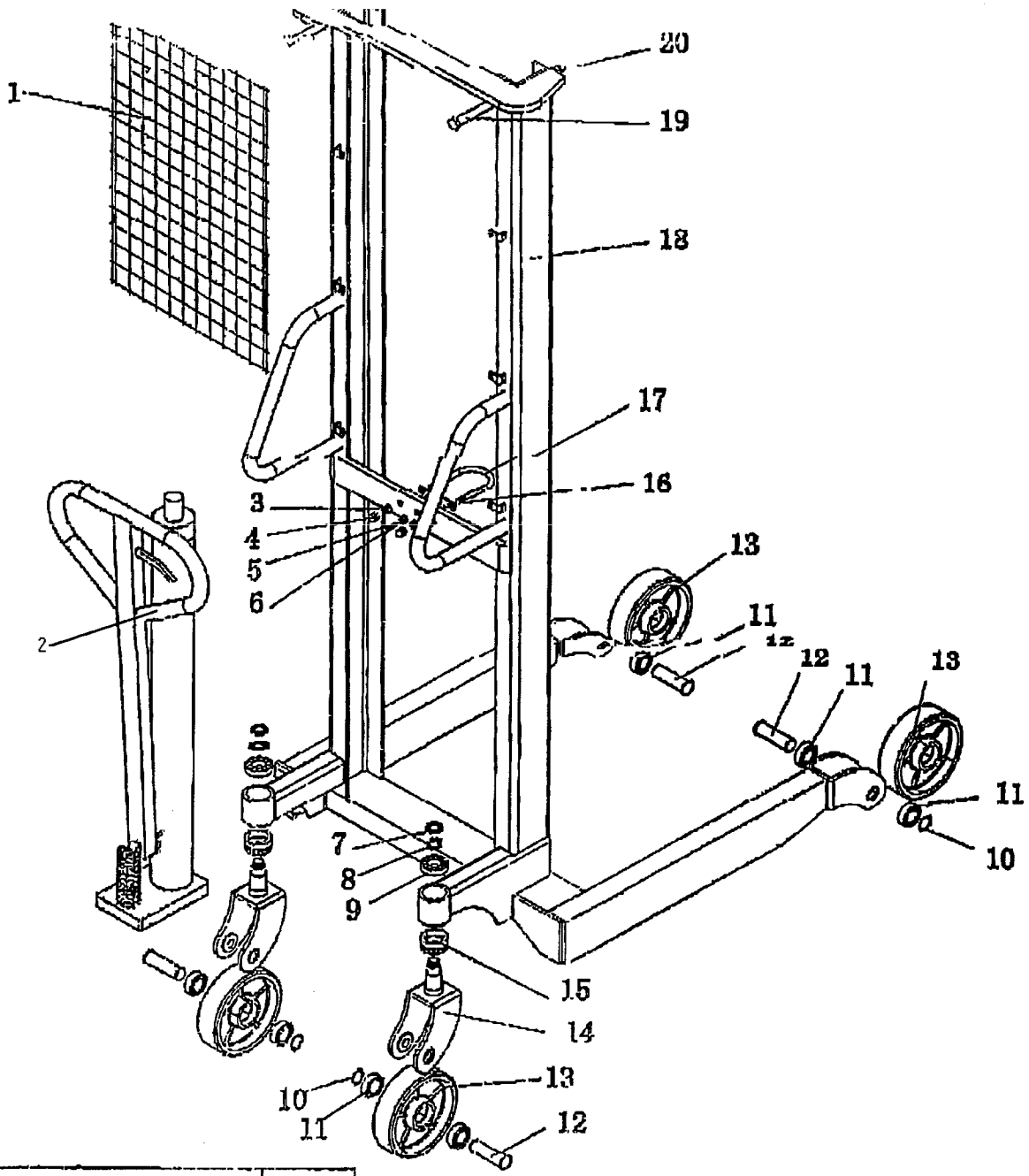
Notes:

- *Check the lift regularly for obstructions, wear, or damage.*



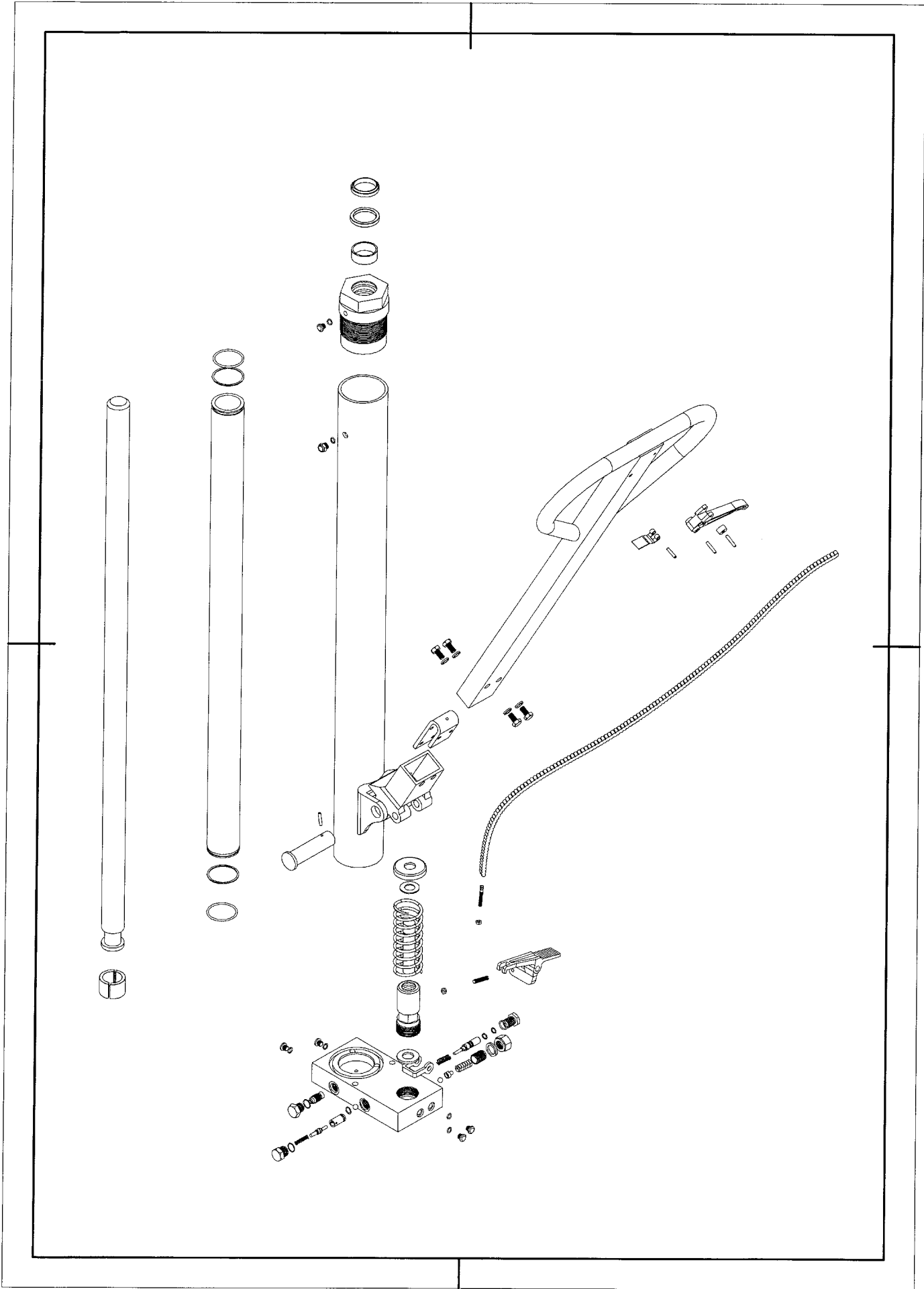
B	Lifting & Rotating Assembly	1
1	Snap Ring	2
2	Snap Ring	2
3	Ball-Bearing	2
4	Roller	2
5	Pin	4
6	Bolt	2
7	Nut	4
8	Chain	2
9	Ball-Bearing	4
10	Roller Sleeve	4
11	Cylinder Seat	1

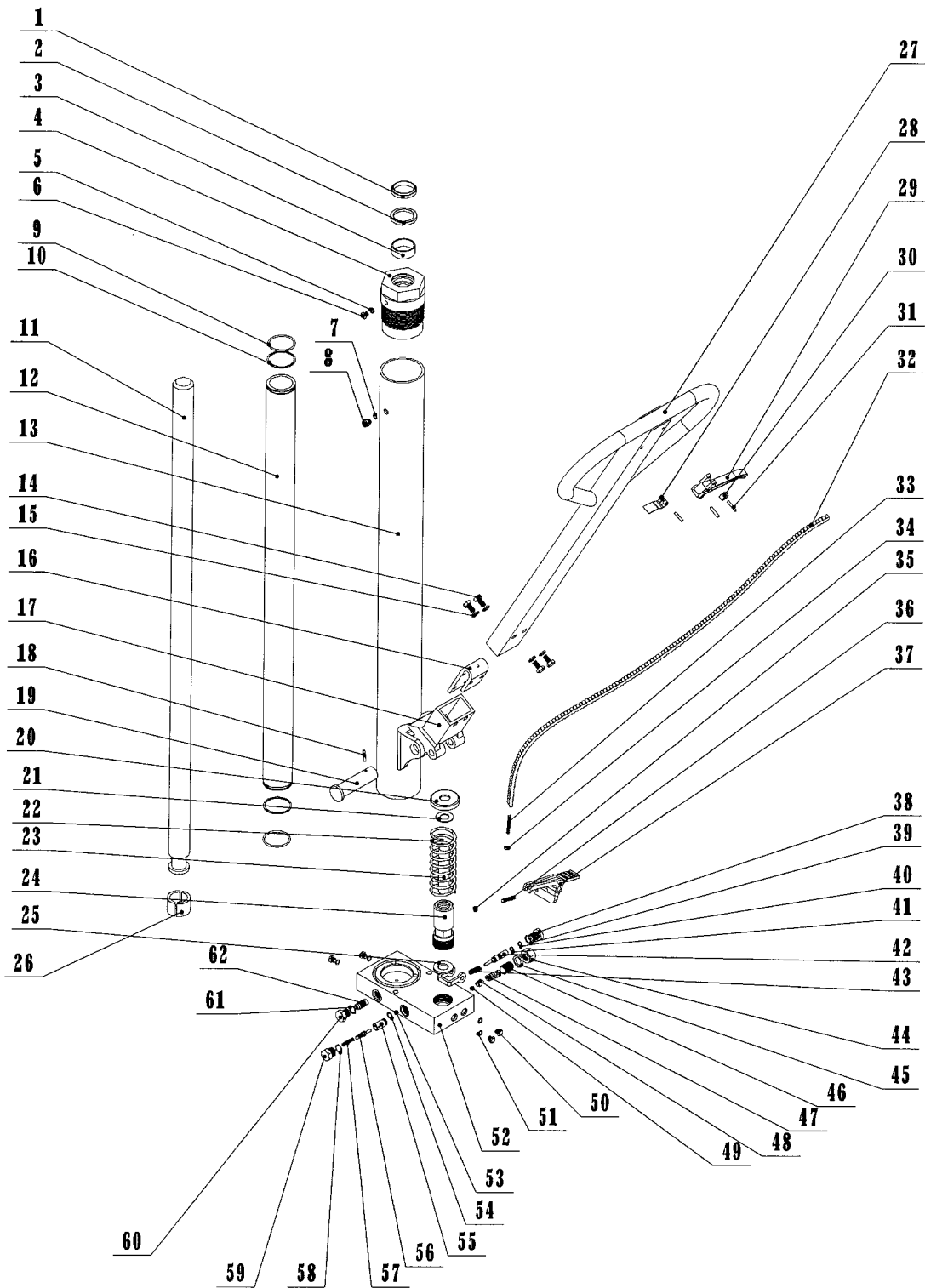
A-2	Cylinder Assembly	1
12	Hand Wheel	1
13	Snap Ring	1
14	Ball-Bearing	1
15	Stock	1
16	Handl Rod	1
17	Bolt	4
18	Control Box	1
19	Grip per Assembly	1



NO.	Description	Q' TY
A	Mast & Frame	1
1	Meshwork	1
2	Cylinder Assembly	1
3	Nut	2
4	Nut	2
5	Nut	1
6	Bolt	1
7	Nut	2
8	Washer	2
9	Ball-Bearing	2
10	Snap Ring	4

NO.	Description	Q' TY
11	Ball-Bearing	8
12	Pin	4
13	PU Wheel	4
14	Wheel Seat	2
15	Bearing	2
16	Small Plate	1
17	Hoop	1
18	Mast Frame	1
19	Bolt	2
20	Nut	2





PARTS LIST OF HYDRAULIC CYLINDER

1		CYLINDER COVER	1
2		O-RING	1
3		O-SEAL	1
4		GUIDE RING	1
5		O-RING	1
6		BOLT TOP	1
7		POSITON ROD	1
8		SNAP RING	1
9		O-RING	1
10		CYLINDER INNER TUBE	1
11		CYLINDER OUTER TUBE	1
12		POSITION KEY	1
13		PIN	1
14		WASHING	1
15		PIN	1
16		RELEASE PEDAL	1
17		BOLT TOP	1
18		O-RING	1
19		BOLT TOP	1
20		O-RING	1
21		RELIEF VALVE	1
22		O-RING	1
23		FLOW CONTROL VALVE	1
24		CHECK VALVE	1
25		VALVE BASE	1
26		O-SEAL WASHING	1
27		SPRING	1
28		O-RING	1
29		BOLT TOP	1
30		O-RING	1
31		BOLT TOP	1
32		PISTON SEAL	1
33		O-RING	1
34		CYLINDER BODY	1
35		PIN	1
36		AXLE	1
37		PIN	1
38		STEEL RING	1
39		PIN	1
40		HANDLE	1
41		STEEL RING BASE	1
42		SCREW	6
43		PIN	1
44		SPRING WASHING	1
45		POSITON ROD	1
46		SPRING BASE	1

LIMITED WARRANTY

Vestil Manufacturing Corporation (“Vestil”) warrants this product to be free of defects in material and workmanship during the warranty period. *Our warranty obligation is to provide a replacement for a defective original part if the part is covered by the warranty, after we receive a proper request from the warrantee (you) for warranty service.*

Who may request service?

Only a warrantee may request service. *You are a warrantee if* you purchased the product from Vestil or from an authorized distributor AND Vestil has been fully paid.

What is an “original part”?

An original part is a part used to make the product as shipped to the warrantee.

What is a “proper request”?

A request for warranty service is proper if Vestil receives: 1) a photocopy of the Customer Invoice that displays the shipping date; AND 2) a written request for warranty service including your name and phone number. Send requests by any of the following methods:

Mail
Vestil Manufacturing Corporation
2999 North Wayne Street, PO Box 507
Angola, IN 46703

Fax
(260) 665-1339
Phone
(260) 665-7586

Email
sales@vestil.com

In the written request, list the parts believed to be defective and include the address where replacements should be delivered.

What is covered under the warranty?

After Vestil receives your request for warranty service, an authorized representative will contact you to determine whether your claim is covered by the warranty. Before providing warranty service, Vestil may require you to send the entire product, or just the defective part or parts, to its facility in Angola, IN. The warranty covers defects in the following *original* dynamic components: motors, hydraulic pumps, electronic controllers, switches and cylinders. It also covers defects in *original* parts that wear under normal usage conditions (“wearing parts”): bearings, hoses, wheels, seals, brushes, batteries, and the battery charger.

How long is the warranty period?

The warranty period for original components is 30 days. The warranty period begins on the date when Vestil ships the product to the warrantee. If the product was purchased from an authorized distributor, the period begins when the distributor ships the product. Vestil may extend the warranty period for products shipped from authorized distributors by *up to* 30 days to account for shipping time.

If a defective part is covered by the warranty, what will Vestil do to correct the problem?

Vestil will provide an appropriate replacement for any *covered* part. An authorized representative of Vestil will contact you to discuss your claim.

What is not covered by the warranty?

1. Labor;
2. Freight;
3. Occurrence of any of the following, which automatically voids the warranty:
 - Product misuse;
 - Negligent operation or repair;
 - Corrosion or use in corrosive environments;
 - Inadequate or improper maintenance;
 - Damage sustained during shipping;
 - Collisions or other incidental contacts causing damage to the product;
 - Unauthorized modifications: DO NOT modify the product IN ANY WAY without first receiving written authorization from Vestil. Modification(s) might make the product unsafe to use or might cause excessive and/or abnormal wear.

Do any other warranties apply to the product?

Vestil Manufacturing Corp. makes no other express warranties. All implied warranties are disclaimed to the extent allowed by law. Any implied warranty not disclaimed is limited in scope to the terms of this Limited Warranty.

