



OPERATION & SERVICE MANUAL

PORTABLE DRUM JACK (DRUM-55-S)



VESTIL MANUFACTURING CORP.

2999 NORTH WAYNE STREET, P.O. BOX 507, ANGOLA, IN 46703

TELEPHONE: (260) 665-7586 -OR- TOLL FREE (800) 348-0868

FAX: (260) 665-1339

URL: WWW.VESTILMFG.COM EMAIL: SALES@VESTIL.COM

DRUM-55-S PORTABLE DRUM JACK

Introduction

Read and follow the instructions contained in this operating manual.

Only trained, well-informed personnel, who have been instructed in accordance with this operation manual, may use or work on the drum jack.

This unit has a unique grapple to hold 55-gallon drums securely into the steel saddle prior to lifting it vertically. The drum is held in this position during transit, enabling open drums to be handled without spillage.

Liability or guarantee is waived if:

- The instructions in this operating manual are not observed.
- The high-lift stacking truck is operated, cleaned or maintained incorrectly.
- Alterations to the functions are carried out without the consent of manufacturer.
- Original spare parts are not used.

Safety instructions

This chapter informs the user about residual dangers relating to the correct use of the products. It contains generally valid safety instructions which must be observed.

Safety instructions relating to specific actions or situations are listed prior to the respective action and/or description of the situation in the chapter.

Principles

This product complies with state-of-the-art technical standards and recognized safety regulations, but there are still dangers which may occur which must be considered.

Only operate the product in a perfect condition and observing the information contained in the operating manual.

The operator is responsible for integrating the product with as little risk as possible into his working environment. This obligation continues through every phase of the products lifespan, beginning at the planning stage. Residual dangers are to be minimized.

Only trained, competent personnel who have been instructed using the operating manual and the product are permitted to work with the truck.

The operating manual must be understood (responsibility, checking)

Specification

SPECIFICATION

Model Number	DRUM-55-S
Capacity	1,000 lbs.
Drum Lift Height from Ground	3"
Overall Size (W x D x H)	29" x 42 1/2" x 47 3/8"
Turning Radius	29"
Steering Wheel	Φ8" x 2"
Front Wheel	Φ3" x 1 1/2"
No. of Strokes to secure the drum	6 - 7
No. of strokes to lift the drum to full height	10 - 12
Net Weight	180 lbs.

Receiving Instructions

Every unit is thoroughly tested and inspected prior to shipment. However, it is possible that the unit may incur damage during transit. If you see damage when unloading, make a note of it on the SHIPPER RECEIVER.

Remove all packing & strapping material, inspect for damage. IF DAMAGE IS EVIDENT, FILE A CLAIM WITH THE CARRIER IMMEDIATELY! Also, check fork size, type of power unit, etc., to see that the unit is correct for the intended application.

Warnings & Safety Instructions

Insure that all employees understand and follow the following instructions

- Read and understand the owner's manual before using or servicing the drum jack.
- Do not use the drum lifter if any damage or unusual noise is observed.
- Improper use of this drum lifter could result in injury and damage to load or equipment.
- Always watch the drum lifter and any load on it carefully when it is being used or moved.
- Do not overload this drum jack. Check capacity plate for loading weight and lifting height. Do not handle unstable loads.
- Operate truck only from designated operating load position.
- Make sure that the drum has been exactly clamped when to lift.
- Avoid sudden stops or quick turns to prevent accidental tipping of the load.
- Park drum lifter on level surfaces and not in the way of other products
- When parked, lower the carriage completely and make sure handle is in vertical position.
- Travel slowly and with caution on slopes, always travel with load end down grades.
- Do not perform any modifications to the drum lifter without manufacturer's approval. Failure to receive authorization for changes to the equipment could void the warranty.
- Do not use brake fluid or jack oil in the hydraulic system. If oil is needed, use an anti-wear hydraulic oil with a viscosity grade of 150 SUS at 100°F, (ISO 32 @ 40°C), or a non-synthetic transmission fluid.
- Use only replacement parts either supplied or approved by the manufacturer.

OPERATION

1. Before lifting the load, follow these stages:
 - a. Maneuver the unit to 55-gallon drum, secure drum in the steel (saddle) carriage of drum jack.
 - b. Pump the handle, saddle clamp will grapple 55-gallon drum securely in the carriage (6-7 pumps).
 - c. Keep pumping the handle to lift the drum off of ground (10-12 pumps to full height).
 - d. To lower the drum & release secure grip around the drum press release lever on the handle until drum is fully lowered and released.
2. Park drum jack in a protected, leveled and solid place.

MAINTENANCE

1. Only qualified and authorized personnel should be permitted to maintain, repair, adjust and inspect the stacker.
2. The work area should be clean, properly ventilated and the floor should be kept dry.
3. All parts of the lifting or rotate mechanism should be carefully and regularly inspected and maintained in a safe operating condition.

All hydraulic systems should be regularly inspected and maintained in conformance with the maintenance schedules. Lift cylinders, valves and other similar parts should be checked to assure that "drift" has not developed to the extent that it would create a hazard.

4. Please check the oil level every six months. Use anti-wear hydraulic oil with a viscosity grade of 150 SUS at 100°F (ISO 32 @ 40°C) or a non synthetic transmission fluid.
5. Use only replacement parts either supplied or approved by the manufacturer.

OREDRING REPLACEMENT PARTS

We take pride in using quality parts on the equipment. We are not responsible for equipment problems resulting from the use of unapproved replacement parts.

To order replacement or spare parts for this equipment, contact the factory.

In any communication with the factory, please be prepared to provide the machine's serial number, which is indicated on the machine plate.

ADJUSTING RELEASE LEVER

On the handle of this drum jack, you can find control lever (part # 1) which can be adjusted in three positions

Raise – lever down (as shown in the photo)



Drive – Neutral position lever in the center (as shown in the photo)



Lower – lever up (lever moves back to drive position when released)



If however the settings has been changed , you can adjust according to the following steps:

A - If the drum jack elevates while pumping in the DRIVE position, turn the adjusting nut (part # 18) on the adjusting bolt (part # 17) clockwise until pumping action doesn't raise the jack and the DRIVE position functions properly.



B - If the jack descends while pumping in the DRIVE position, turn the nut (part # 18) counter-clockwise until

the forks don't lower.

C - If the jack don't descend when control lever (part # 1) is in the LOWER position, turn the nut (part # 18) clockwise until raising the control lever (part # 1) lowers the forks. Then check the DRIVE position according to item A and B to be sure the nut (part # 18) is in the proper position.

D - If the jack don't elevate while pumping in the RAISE position, turn the nut (part # 18) counter-clockwise until the jack elevate while pumping in the RAISE position. Then check the LOWER and DRIVE position according to item A,B, & C.

Maintenance and repair

TROUBLESHOOTING GUIDE --

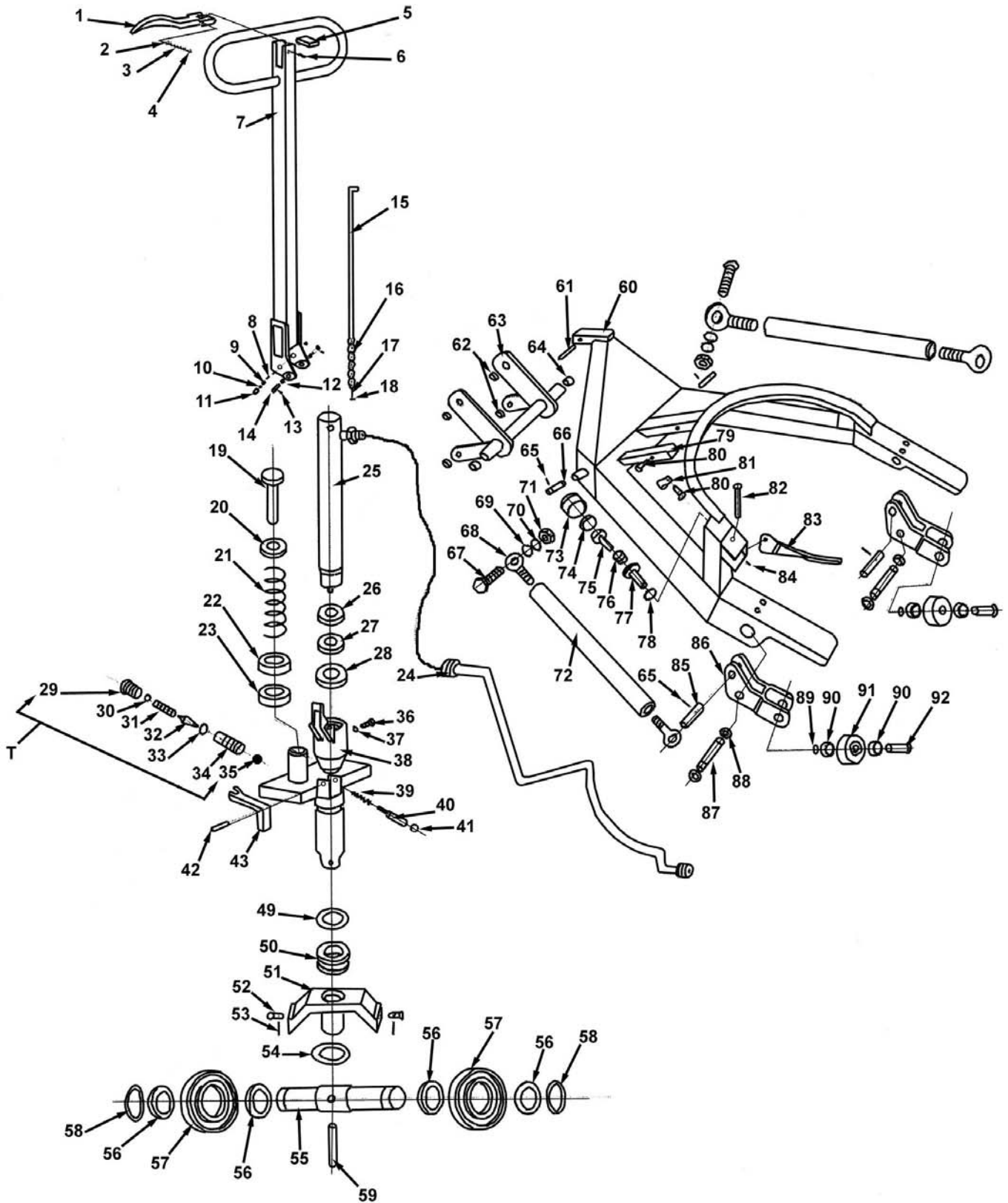
Warning: Before performing any task, always block drive wheel off of the ground.

Consult the factory for problems at time of installation, or for any problems not addressed below.

<u>Problem:</u>	<u>Possible cause(s):</u>	<u>Action:</u>
Lifting height is not longer achieved	Hydraulic oil level is too low	Re-fill hydraulic oil when carriage is all the way down.
Unit jerks when lifting	Air in the system	Open vent screw on the lift cylinder with carriage lowered all the way down. Lift carriage with vent screw open until oil is free from air bubbles. Close the vent screw
Carriage can't be lifted up	Without hydraulic oil Oil has impurities	Fill the oil Change the oil
Carriage can't be lowered	Oil has impurities Piston rod & pump body is deformed.	Change the oil and clean drift valve Replace piston rod or pump body
Oil leakage	Seals worn, cracked or damaged.	Replace with new one.

PARTS DRAWING

DRUM-55-S-05
TY-30-1



PARTS LIST

PART NUMBER	DESCRIPTION	QTY	PART NUMBER	DESCRIPTION	QTY
DRUM-55-S-05-1	Discharge Handle	1	DRUM-55-S-05-51	Support Seat	1
DRUM-55-S-05-2	Steel Ball	1	DRUM-55-S-05-52	Shaft	2
DRUM-55-S-05-3	Spring	1	DRUM-55-S-05-53	Spring Pin	2
DRUM-55-S-05-4	Steel Ball	1	DRUM-55-S-05-54	C-Ring	1
DRUM-55-S-05-5	Cover	1	DRUM-55-S-05-55	Wheel Shaft	1
DRUM-55-S-05-6	Spring Pin	1	DRUM-55-S-05-56	Bearing	4
DRUM-55-S-05-7	Handle	1	DRUM-55-S-05-57	Wheel	2
DRUM-55-S-05-8	Spring Pin	1	DRUM-55-S-05-58	C-Ring	2
DRUM-55-S-05-9	Shaft	1	DRUM-55-S-05-59	Spring Pin	1
DRUM-55-S-05-10	Bushing	2	DRUM-55-S-05-60	Cart Holder	1
DRUM-55-S-05-11	Press Guide	1	DRUM-55-S-05-61	Spring Column Pin	1
DRUM-55-S-05-12	Bushing	2	DRUM-55-S-05-62	Bushing	4
DRUM-55-S-05-13	Set Screw	2	DRUM-55-S-05-63	Beam Assembly	1
DRUM-55-S-05-14	Shaft	2	DRUM-55-S-05-64	Bushing	2
DRUM-55-S-05-15	Draw Rod	1	DRUM-55-S-05-65	Spring Column Pin	4
DRUM-55-S-05-16	Chain	1	DRUM-55-S-05-66	Shaft	2
DRUM-55-S-05-17	Head Chain	1	DRUM-55-S-05-67	Hex Cap Bolt M12	2
DRUM-55-S-05-18	Set Nut	1	DRUM-55-S-05-68	Release Rod	4
DRUM-55-S-05-19	Pump Piston	1	DRUM-55-S-05-69	Flat Washer	2
DRUM-55-S-05-20	Spring Seat	1	DRUM-55-S-05-70	Spring Washer	2
DRUM-55-S-05-21	Spring	1	DRUM-55-S-05-71	Hex Cap Nut M12	2
DRUM-55-S-05-22	Dust Cover	1	DRUM-55-S-05-72	Draw Rod	2
DRUM-55-S-05-23	Oil Seal	1	DRUM-55-S-05-73	Lift Piston Cylinder	1
DRUM-55-S-05-24	Oil Pipe	1	DRUM-55-S-05-74	Piston	1
DRUM-55-S-05-25	Lift Piston	1	DRUM-55-S-05-75	DH 50 Oil Seal	1
DRUM-55-S-05-26	Dust Cover	1	DRUM-55-S-05-76	Spring	1
DRUM-55-S-05-27	Oil Seal	1	DRUM-55-S-05-77	Piston Cover	1
DRUM-55-S-05-28	Oil Seal	1	DRUM-55-S-05-78	Cir-Nut M32	1
DRUM-55-S-05-29	Screw Plug	1	DRUM-55-S-05-79	Support Board	1
DRUM-55-S-05-30	O-Ring	1	DRUM-55-S-05-80	Cir-Screw M4	2
DRUM-55-S-05-31	Spring	1	DRUM-55-S-05-81	Sheet Iron	1
DRUM-55-S-05-32	Valve	1	DRUM-55-S-05-82	Shaft	1
DRUM-55-S-05-33	O-Ring	1	DRUM-55-S-05-83	Arc Clamp	1
DRUM-55-S-05-34	Valve Cover	1	DRUM-55-S-05-84	Spring	1
DRUM-55-S-05-35	Steel Ball	1	DRUM-55-S-05-85	Shaft	2
DRUM-55-S-05-36	Hex Cap Plug	1	DRUM-55-S-05-86	Wheel Holder	2
DRUM-55-S-05-37	O-Ring	1	DRUM-55-S-05-87	Shaft	2
DRUM-55-S-05-38	Valve	1	DRUM-55-S-05-88	C-Ring	4
DRUM-55-S-05-39	Spring	1	DRUM-55-S-05-89	C-Ring	2
DRUM-55-S-05-40	Top Rod	1	DRUM-55-S-05-90	Bearing	4
DRUM-55-S-05-41	O-Ring	2	DRUM-55-S-05-91	Wheel	2
DRUM-55-S-05-42	Spring Pin	1	DRUM-55-S-05-92	Shaft	2
DRUM-55-S-05-43	Discharge Board	1	DRUM-55-S-05-CYL	Clamping Cylinder	
DRUM-55-S-05-49	Washer	1	DRUM-55-S-05-HCA	Complete Handle Assembly	
DRUM-55-S-05-50	Bearing	1	DRUM-55-S-05-SK	Pump Seal Kit	
			DRUM-55-S-05-CPA	Complete Pump Assembly	

LIMITED WARRANTY

Vestil Manufacturing Corporation (“Vestil”) warrants this product to be free of defects in material and workmanship during the warranty period. *Our warranty obligation is to provide a replacement for a defective original part if the part is covered by the warranty, after we receive a proper request from the warrantee (you) for warranty service.*

Who may request service?

Only a warrantee may request service. *You are a warrantee if* you purchased the product from Vestil or from an authorized distributor AND Vestil has been fully paid.

What is an “original part”?

An original part is a part used to make the product as shipped to the warrantee.

What is a “proper request”?

A request for warranty service is proper if Vestil receives: 1) a photocopy of the Customer Invoice that displays the shipping date; AND 2) a written request for warranty service including your name and phone number. Send requests by any of the following methods:

Mail
Vestil Manufacturing Corporation
2999 North Wayne Street, PO Box 507
Angola, IN 46703

Fax
(260) 665-1339
Phone
(260) 665-7586

Email
sales@vestil.com

In the written request, list the parts believed to be defective and include the address where replacements should be delivered.

What is covered under the warranty?

After Vestil receives your request for warranty service, an authorized representative will contact you to determine whether your claim is covered by the warranty. Before providing warranty service, Vestil may require you to send the entire product, or just the defective part or parts, to its facility in Angola, IN. The warranty covers defects in the following *original* dynamic components: motors, hydraulic pumps, electronic controllers, switches and cylinders. It also covers defects in *original* parts that wear under normal usage conditions (“wearing parts”): bearings, hoses, wheels, seals, brushes, batteries, and the battery charger.

How long is the warranty period?

The warranty period for original components is 30 days. The warranty period begins on the date when Vestil ships the product to the warrantee. If the product was purchased from an authorized distributor, the period begins when the distributor ships the product. Vestil may extend the warranty period for products shipped from authorized distributors by *up to* 30 days to account for shipping time.

If a defective part is covered by the warranty, what will Vestil do to correct the problem?

Vestil will provide an appropriate replacement for any *covered* part. An authorized representative of Vestil will contact you to discuss your claim.

What is not covered by the warranty?

1. Labor;
2. Freight;
3. Occurrence of any of the following, which automatically voids the warranty:
 - Product misuse;
 - Negligent operation or repair;
 - Corrosion or use in corrosive environments;
 - Inadequate or improper maintenance;
 - Damage sustained during shipping;
 - Collisions or other incidental contacts causing damage to the product;
 - Unauthorized modifications: DO NOT modify the product IN ANY WAY without first receiving written authorization from Vestil. Modification(s) might make the product unsafe to use or might cause excessive and/or abnormal wear.

Do any other warranties apply to the product?

Vestil Manufacturing Corp. makes no other express warranties. All implied warranties are disclaimed to the extent allowed by law. Any implied warranty not disclaimed is limited in scope to the terms of this Limited Warranty.

