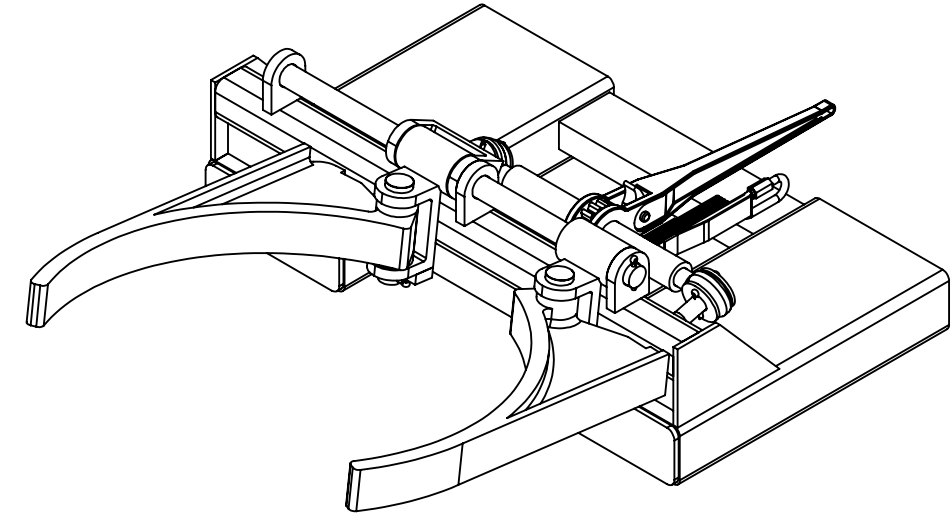
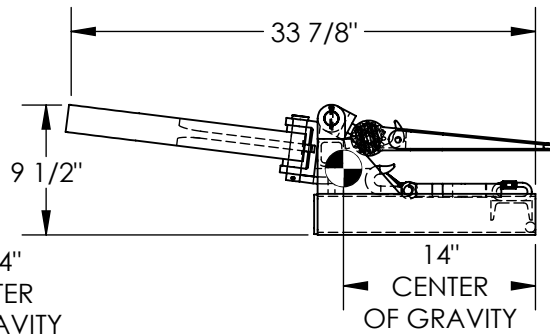
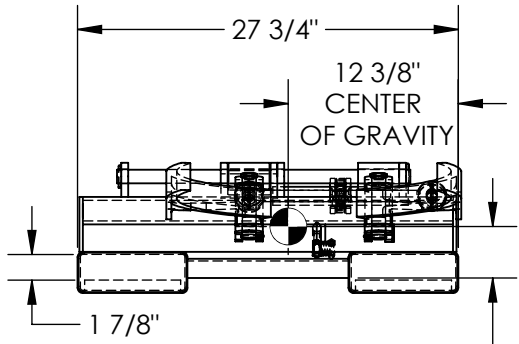
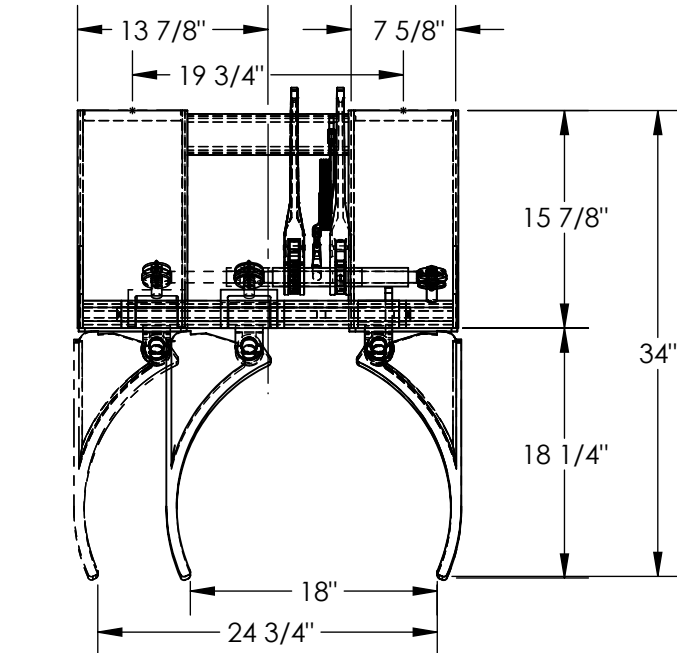


SPRING GRIP FORK MOUNTED DRUM GRIPPER - DGS-AG

APPROX WEIGHT: 126.04 lbs.
 DOES NOT INCLUDE WEIGHT OF POWER OR PACKAGING!!!

*** ANY ADDITIONS, DELETIONS, OR OMISSIONS MUST BE CORRECTED ON THIS DRAWING AS THIS DRAWING WILL BE CONSIDERED ALL INCLUSIVE ***

ALL GRAPHICS PROVIDED ARE FOR REFERENCE ONLY. IF CERTAIN DIMENSIONS ARE CRITICAL PLEASE VERIFY THOSE DIMENSIONS WITH YOUR SALESPERSON



DIMENSION TOLERANCE ± 1/4"

STANDARD FEATURES

- MODEL NUMBER IS DGS-AG
 - USED WITH STEEL, PLASTIC, & FIBER DRUMS
 - ADJUSTABLE-STYLE DESIGN WORKS FOR 30, 55 & 85 GAL DRUMS
 - MANUAL RATCHET GRIPPING MECHANISM
 - ARMS ADJUSTABLE FROM 18" TO 24 3/4" ARMS FOLD UP FOR STORAGE
 - FORK POCKET C-C = 19 3/4" FORK POCKET SIZE IS 7 5/8" W X 1 7/8" H
 - 1,500 LBS CAPACITY- STEEL & FIBER DRUMS
 - 1,000 LBS CAPACITY- PLASTIC DRUMS
 - TOUGH BAKED IN POWDER COAT BLACK FINISH
 - LOST LOAD IS 130 LBS (APPROX)
 - EFFECTIVE THICKNESS IS FORK LENGTH MINUS 15 7/8"
- NEVER EXCEED LOAD CENTER RATING PER FORK TRUCK
 MANUFACTURER'S GUIDELINES. DO NOT USE THIS FORK TRUCK
 ATTACHEMENT IF LOAD WILL EXCEED FORK TRUCK MANUFACTURER'S
 LOAD CENTER RATING.

SPECIAL FEATURES

NONE

APPROVAL

I, THE UNDERSIGNED, AGREE THAT THE PRODUCT AS REPRESENTED SATISFIES DESIGN AND DIMENSION REQUIREMENTS. I ALSO ACKNOWLEDGE MY DUTY TO CONFIRM PRODUCT AND INSTALLATION COMPLIANCE WITH ALL APPLICABLE FEDERAL, STATE AND LOCAL REGULATIONS AND STANDARDS.

ANY MODIFIED UNITS ARE NON-RETURNABLE

[] As drawn [] As marked

Signed: _____ Date: _____

Printed Name: _____

LEAD TIME WILL START UPON RECEIPT OF SIGNED APPROVAL DRAWING

| | |
|---|--|
| FOR INTERNAL USE ONLY PROJECT SIGN OFF | |
| SALES | |
| ENG. | |
| FAB. | |
| POWER | |

| | | |
|----------------------|-------------|------------|
| DISTRIBUTOR'S NAME: | | P.O.# |
| VESTIL MANUFACTURING | | X |
| DRAWN BY: WHR | | W.O.# |
| DATE: 11/2/2011 | | X |
| REFERENCE: X | SCALE: 1:14 | SALES: X |
| QUOTED LEAD TIME: X | QUOTE # | FILE NAME: |
| | X | 40-007-048 |