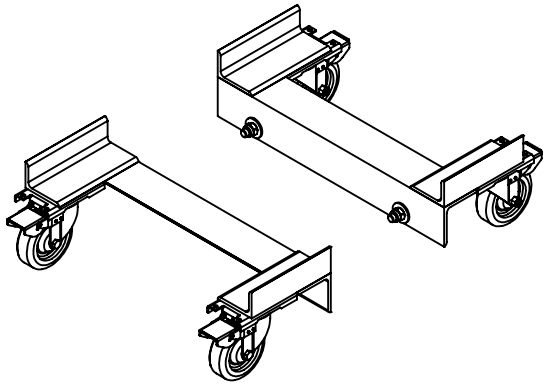


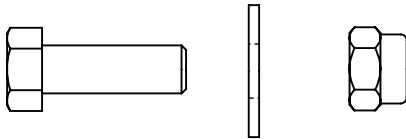
CYL-CK CASTER KIT

KIT SHOULD INCLUDE:

(2) - SWIVEL CASTER ASSEMBLIES

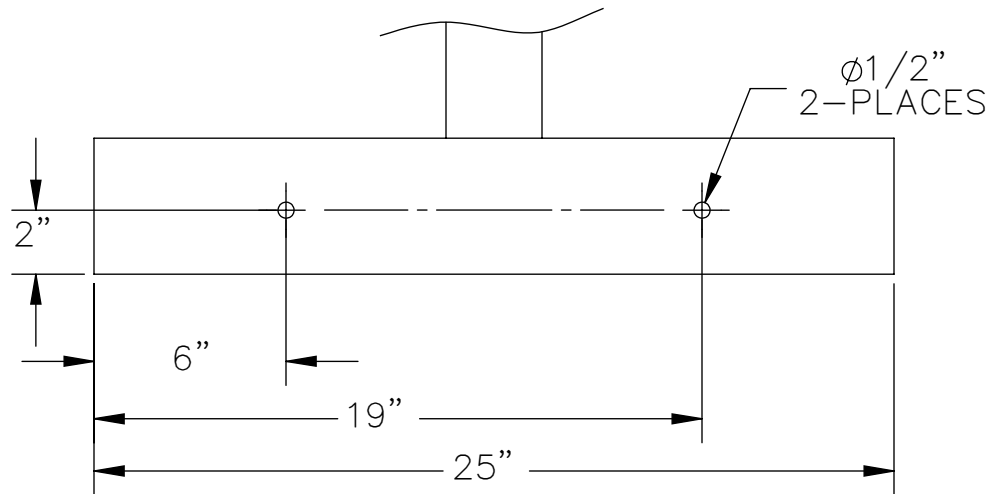


(4) - 1/2-13 UNC x 1 1/2 LG HEX HEAD BOLT, WASHER, & LOCK NUT (FOR USE ON SWIVEL ASSEMBLY)



INSTRUCTIONS:

1. DRILL HOLES IN THE LOCATIONS SHOWN BELOW IN THE CYLINDER CADDY BASE PAN. (NOTE: HOLES NEEDED ON BOTH SIDES OF THE UNIT)
2. MOUNT SWIVEL CASTER ASSEMBLY ON ENDS OF UNIT



<p>PROPRIETARY AND CONFIDENTIAL THE INFORMATION CONTAINED IN THIS DRAWING IS THE SOLE PROPERTY OF VESTIL MANUFACTURING CO. ANY REPRODUCTION IN PART OR AS A WHOLE WITHOUT THE WRITTEN PERMISSION OF VESTIL MANUFACTURING CO. IS PROHIBITED.</p>	UNLESS OTHERWISE SPECIFIED: REMOVE ALL BURRS AND SHARP EDGES		Vestil Manufacturing Co.			
	DIMENSIONS ARE IN INCHES		DESCRIPTION: INSTRUCTIONS, CYL CASTERS			
	CONCENTRIC	.006 TIR	.060 TIR	MODEL NO: CYL-CK		
	ANGLES	± 0° 30'	± 1° 0'	DRAWN BY: K.YOUNG	DATE: 9/12/05	SCALE: 1:6
	DECIMALS	x.xxx ± .005		MAT'L: AS LISTED		
FRACTIONS	x.xx ± .010		DWG. NO. 33-001-155			
TOLERANCES	x.x ± .025	± .015	DWG. NO. 33-126-007			
	± 1/32	± 1/16	DO NOT SCALE DRAWING			
	MACHINE	WELDMENT				
	COMMENTS:					