

INSTRUCTION MANUAL

FOR PREMIUM SCISSOR LIFT CARTS

**MODELS COVERED: CART-300-S-HR,
CART-600-S-HR, , CART-1000-S-HR, CART-400-D-HR**



Content

1. Warning.....	3
2. Caution.....	4
3. Name of parts.....	5
4. Daily inspection.....	6
5. Operating lifftable.....	6~7
6. Specifications.....	8
7. Service instruction.....	8~9
8. Hydraulic Circuit.....	9
9. Exploded view & part list.....	10~19

BEFORE OPERATING THE LIFT TABLE, READ THIS MANUAL CAREFULLY AND UNDERSTAND COMPLETELY. KEEP THIS MANUAL ON FILE FOR FUTURE REFERENCE. IF THIS IS LOST, PLEASE CONTACT YOUR LOCAL SUPPLIER FOR A NEW COPY. ALSO, IF THE WARNING/CAUTION DECAL ON THE UNIT IS LOST, PLEASE CONTACT YOUR LOCAL SUPPLIER FOR A NEW DECAL.

NOTE: On this manual, WARNING means the danger which can lead to death or serious injury. CAUTION means the danger which can lead to slight injury or property damage.

1. WARNING

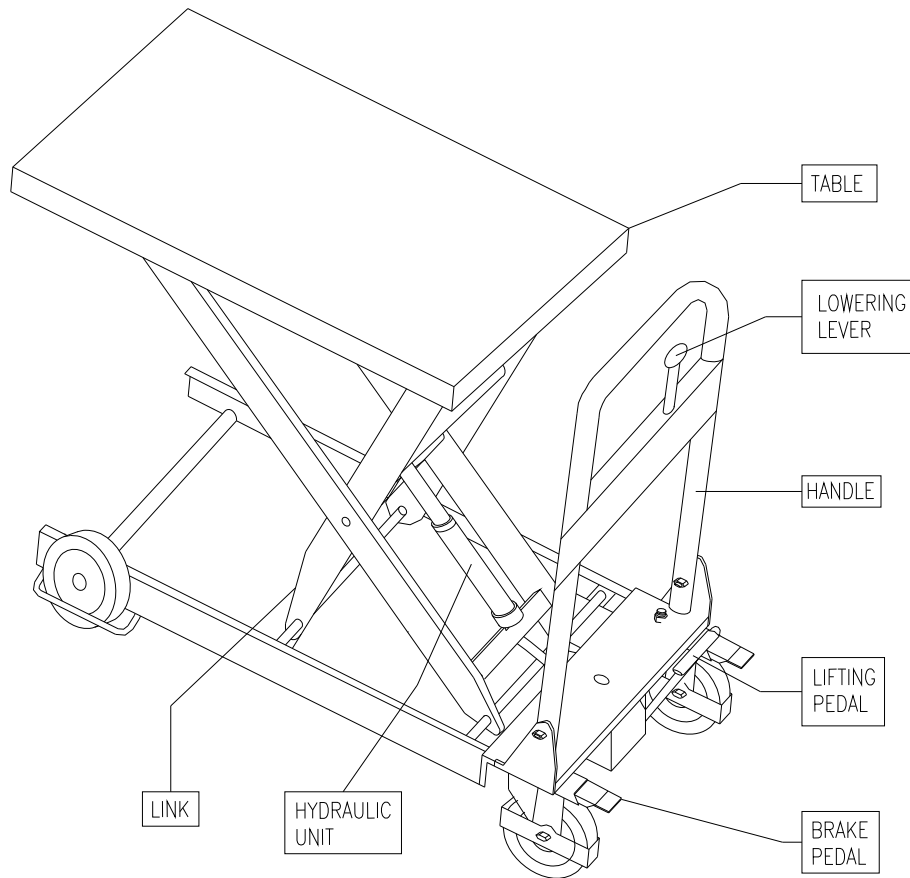
- 1.DO NOT put foot or hand in scissors mechanism.
- 2.DO NOT allow other person to stand in front of or behind lift table when it is moving.
- 3.DO NOT move lift table when table is in raised position. Load could fall down.
- 4.DO NOT enter under table.
- 5.DO NOT overload lift table.
- 6.DO NOT put foot in front of rolling wheels. Injury could result.
- 7.WATCH difference and hardness of floor level when moving lift table. Load could fall down.
- 8.DO NOT use lift table on slope or inclined surface, lift table may become uncontrollable and create danger.
- 9.DO NOT lift people. People could fall down and suffer severe injury.

2. CAUTION

1. Read this operation manual carefully and understand completely operating lift table. Improper operation could create danger.
2. This lift table is a movable lifter designed to lift or lower rated load on table. NO NOT use lift table for other purpose than its intended use.
3. DO NOT allow person to operate lift table who does not understand its operation.
4. DO NOT lower table too fast. Load could fall down and create danger.
5. KEEP watching the condition of load. Stop operating lift table if load becomes unstable.
6. Byake lift table when sliding load on or off table.
7. DO NOT side or end load. Load must be distributed on at least 80% of table area.
8. DO NOT use lift table with unstable, unbalanced loosely stacked load.
9. Practice maintenance work according to service instructions.
10. DO NOT modify lift table without manufacturers written consent.
11. REMOVE load from table and use safety stopper to prevent table from lowering when servicing lift table.
12. This lift table is not designed to be water resistant. Use lift table under dry condition.

3. NAME OF PARTS

CART-300/600/1000-S-HR



4. DAILY INSPECTION

Daily inspection is effective to find the malfunction or fault on lift table. Check lift table on the following points before operation.

CAUTION

DO NOT use lift table if any malfunction or fault is found.

- (1) Check for scratch, bending or cracking on the lift table.
- (2) Check if there is any oil leakage from the cylinder.
- (3) Check the vertical creep of the table.
- (4) Check the smooth movement of the wheel.
- (5) Check the function of brake.
- (6) Check if all the bolt and nuts are tightened firmly.

5. OPERATING LIFTTABLE

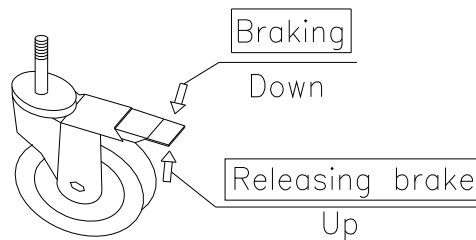
5-1. How to use the brake.

CAUTION

Brake lift table when not moving it in order to prevent sudden movement.
--

The brake is equipped with the swivel caster on the right side.

- (1) Braking the wheel, press the brake pedal.
- (2) Releasing the brake, lift up the brake pedal.



5-2 Lifting the table

WARNING

- | |
|---|
| <ol style="list-style-type: none">1. DO NOT overload lift table, stay within its rated capacity.2. DO NOT side end load must be distributed on at least 80% of table area. |
|---|

Press the lifting pedal several times until the table reaches the desired position.

The table does not elevate after reaching the highest position even if the lifting pedal is pressed.

The table lowers slightly after reaching the highest position.

NOTE:

The hydraulic cylinder is designed to hold table. As is the nature of the hydraulic system, table lowers very slowly over an extended period of time, Please note the table does not stay at the same position indefinitely.
--

5-3. Lowering table

WARNING

DO NOT put foot or hand in scissors mechanism.
--

Pull the lowering down and table lowers.

6. Specifications

Model	Capacity (lbs)	Table (WxL)	Table Height	LxWxH	Front Rigid Wheel (HR)	Rear Swivel Wheel (PP)	Weight (kg)
CART-300-S-HR	300	23 ⁵ / ₈ " x 35 7/16"	13 ¹ / ₈ "—36 ¹ / ₄ "	45 ¹ / ₄ "x25 ⁵ / ₈ "x38 3/16"	Ø8" x 2"	Ø5" x 1½"	145
CART-600-S-HR	600	23 ⁵ / ₈ " x 35 7/16"	13 ¹ / ₈ "—36 ¹ / ₄ "	45 ¹ / ₄ "x25 ⁵ / ₈ "x38 3/16"	Ø8" x 2"	Ø5" x 1½"	145
CART-1000-S-HR	1,000	23 ⁵ / ₈ " x 35 7/16"	13 ¹ / ₈ "—36 ¹ / ₄ "	45 ¹ / ₄ "x25 ⁵ / ₈ "x38 3/16"	Ø8" x 2"	Ø5" x 1½"	145
CART-400-D-HR	400	23 ⁵ / ₈ " x 35 7/16"	18 ¹ / ₈ "—64 ¹ / ₂ "	45 ¹ / ₄ "x25 ⁵ / ₈ "x38 3/16"	Ø8" x 2"	Ø5" x 1½"	188

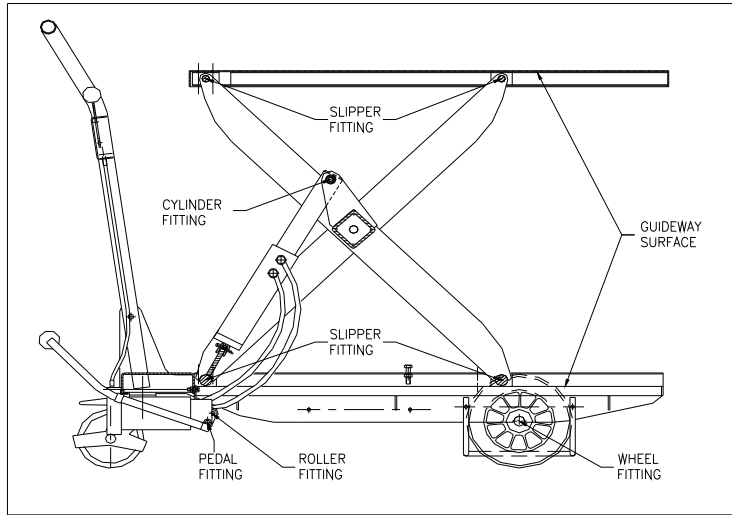
6. **Service instruction**

7-1. Lubricate each point described below every month:

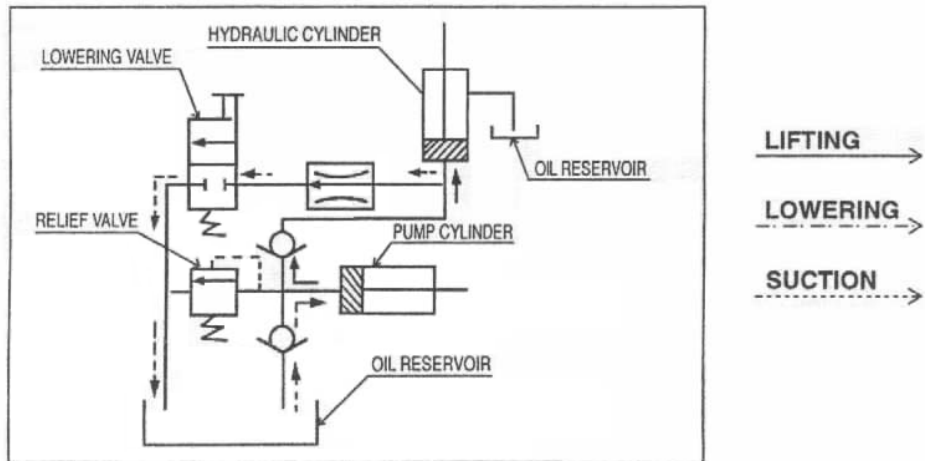
7-2. Change hydraulic oil every 12 months.

Lubricating Points

- (1) Fitting of slipper..... Oil
- (2) Fitting of cylinder.....Oil
- (3) Guideway surface.....Grease
- (4) Pedal fitting point.....Oil
- (5) Roller fitting point.....Oil
- (6) Wheel fitting.....Grease
- (7) Grease nipple.....Grease

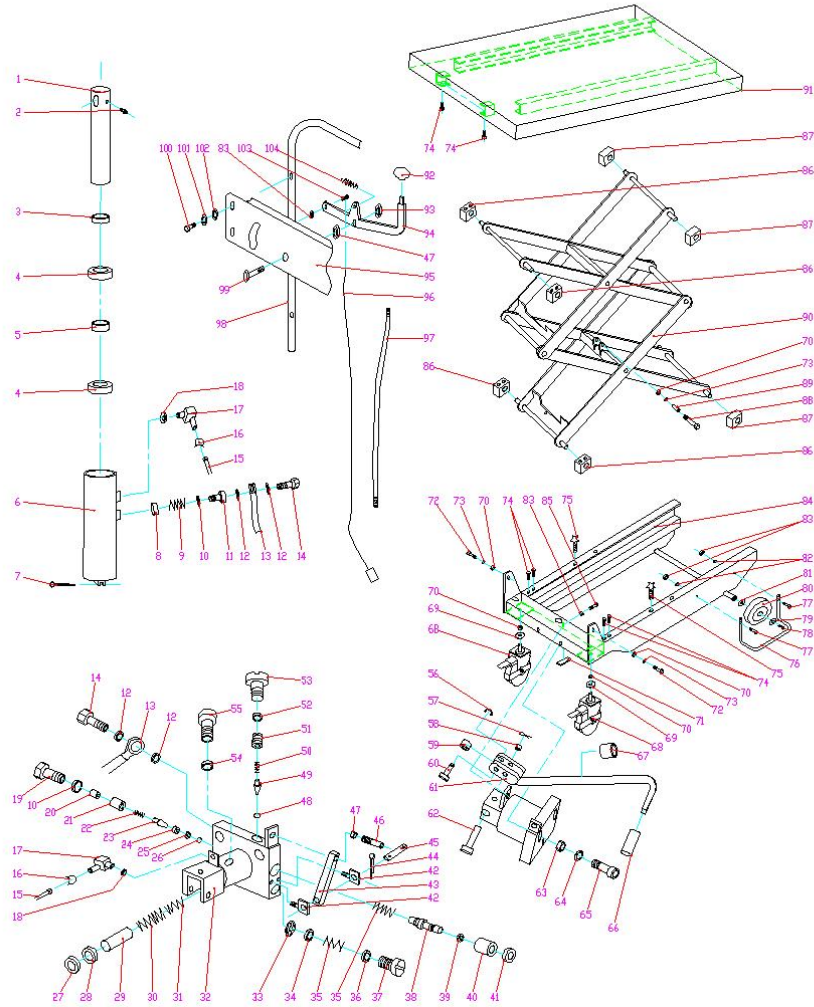


7. Hydraulic Circuit



8. EXPLODED VIEW & PART LIST

CART-400-D-HR

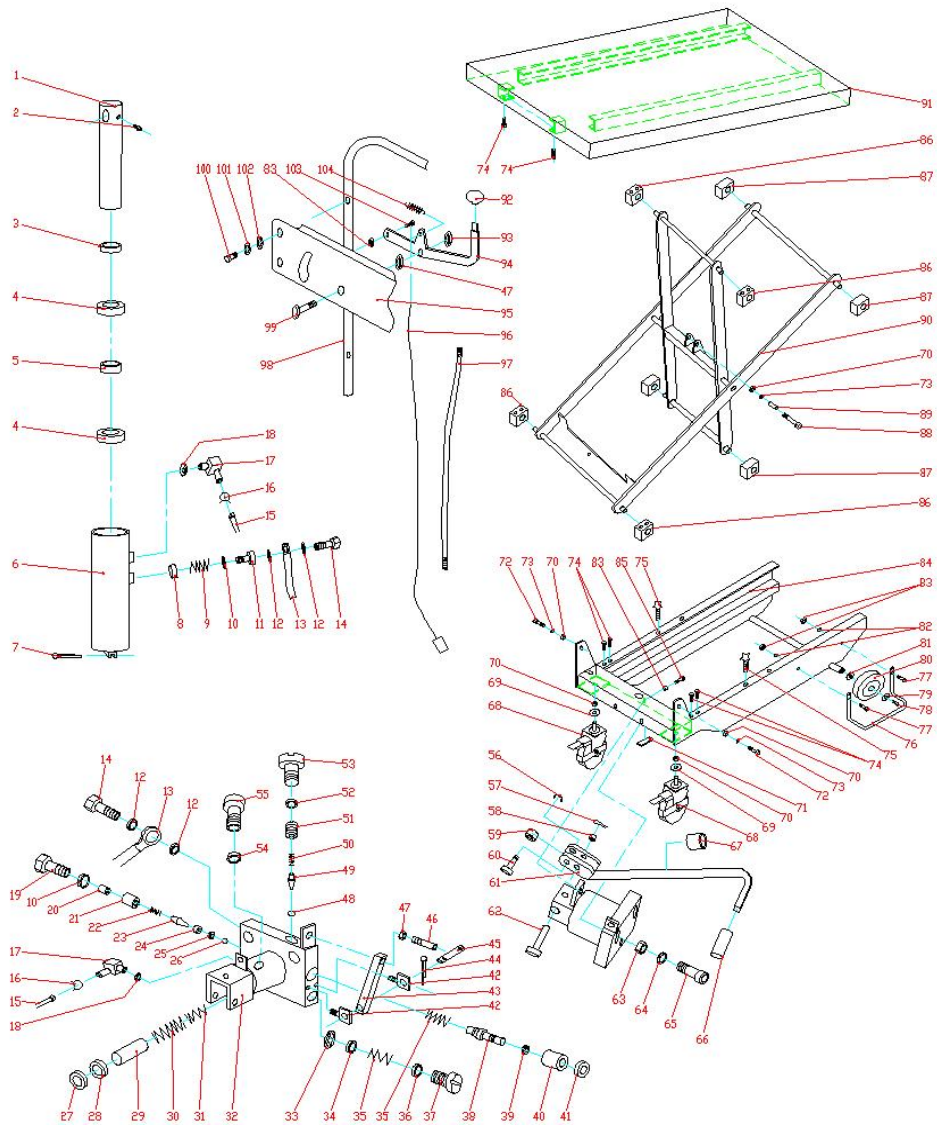


CART-400-D-HR LIFT TABLE SPARE PARTS LIST

No.	Description.	Qty's	No.	Description.	Qty's
1.	Piston rod	1	53.	End cover	1
2.	Oil cup M6	1	54.	O-ring d10×2.65	1
3.	Guide ring	1	55.	Filler screw	1
4.	Y-ring d40×D48×5.5	2	56.	Retainer 10	1
5.	Guide ring	1	57.	Split pin 3×30	1
6.	Cylinder	1	58.	Partition set	2
7.	Split pin 4×30	1	59.	Roller	1
8.	Spring base	1	60.	Pin	1
9.	Spring	1	61.	Pedal holder	1
10.	O-ring D22×2.4	2	62.	Pin	1
11.	Screw	1	63.	Nut M6	2
12.	Seal ring 14	4	64.	Spring washer 6	2
13.	High pressure hose	1	65.	Hex soch screw M6×40	2
14.	Joint	2	66.	Pedal rubber	1
15.	Oil return hose	1	67.	Rubber bushing	1
16.	Check ring	2	68.	Wheel	2
17.	Elbow	2	69.	Washer	2
18.	Seal ring 10	2	70.	Nut M10	5
19.	Adjust casing seat	1	71.	Buffer mat	1
20.	Adjust casing	1	72.	Screw bolt M10×50	2
21.	Spring base	1	73.	Washer 10	3
22.	Check valve spring	1	74.	Bolt	8
23.	Conical valve	1	75.	Bakelite handle	2
24.	Check valve casing	1	76.	Guardrail	2
25.	O-ring d6.9×1.8	1	77.	Screw bolt M6×20	4

26.	Steel ball 7	1	78.	Dormant bolt M8×14	2
27.	O-ring d20×2.65	1	79.	Washer	2
28.	Y-ring d20×D28×5	1	80.	Wheel	2
29.	Pump plunger	1	81.	Nylon washer	2
30.	Spring □	1	82.	Washer 6	4
31.	Spring □	1	83.	Nut M6	6
32.	Pump bass	1	84.	Chassis	1
33.	Mesh	1	85.	Hex soch screw M6×16	1
34.	Washer d5×D9	1	86.	Fix slider	4
35.	Spring	2	87.	Movable slider	4
36.	O-ring D14×2.4	1	88.	Screw bolt M10×70	1
37.	Plug	1	89.	Bushing	1
38.	Reflux rod	1	90.	Scissors lever	1
39.	O-ring d4×1.8	1	91.	Table	1
40.	Guide casing	1	92.	Handle knob M12×φ40	1
41.	O-ring d10.6×2.65	1	93.	Nut M8	1
42.	Supporting block	2	94.	Control link	1
43.	Lever	1	95.	Anchor plate for control link	1
44.	Split pin 1.6×10	2	96.	Steel wire	1
45.	Pin	1	97.	Tube for steel wire	1
46.	Adjust bushing	1	98.	Handle	1
47.	Nut M8	2	99.	Screw bolt M8×20	1
48.	Steel ball 5	1	100.	Bolt M5×10	4
49.	Spring base	1	101.	Spring washer 5	4
50.	Regulating pressure spring	1	102.	Washer 5	4
51.	Regulating pressure screw	1	103.	Bolt	1
52.	O-ring d7.1×1.8	1	104.	Tension spring	1

CART-300/600/1000-S-HR (LIFT TABLE)



CART-300/600/1000-S-HR LIFT TABLE SPARE PARTS LIST

No.	Description.	Qty's	No.	Description.	Qty's
1.	Piston rod	1	53.	End cover	1
2.	Oil cup M6	1	54.	O-ring d10×2.65	1
3.	Guide ring	1	55.	Filler screw	1
4.	Y-ring d40×D48×5.5	2	56.	Retainer 10	1
5.	Guide ring	1	57.	Split pin 3×30	1
6.	Cylinder	1	58.	Partition set	2
7.	Split pin 4×30	1	59.	Roller	1
8.	Spring base	1	60.	Pin	1
9.	Spring	1	61.	Pedal holder	1
10.	O-ring D22×2.4	2	62.	Pin	1
11.	Screw	1	63.	Nut M6	2
12.	Seal ring 14	4	64.	Spring washer 6	2
13.	High pressure hose	1	65.	Hex soch screw M6×40	2
14.	Joint	2	66.	Pedal rubber	1
15.	Oil return hose	1	67.	Rubber bushing	1
16.	Check ring	2	68.	Wheel	2
17.	Elbow	2	69.	Washer	2
18.	Seal ring 10	2	70.	Nut M10	5
19.	Adjust casing seat	1	71.	Buffer mat	1
20.	Adjust casing	1	72.	Screw bolt M10×50	2
21.	Spring base	1	73.	Washer 10	3
22.	Check valve spring	1	74.	Bolt	8
23.	Conical valve	1	75.	Bakelite handle	2
24.	Check valve casing	1	76.	Guardrail	2
25.	O-ring d6.9×1.8	1	77.	Screw bolt M6×20	4

26.	Steel ball 7	1	78.	Dormant bolt M8×14	2
27.	O-ring d20×2.65	1	79.	Washer	2
28.	Y-ring d20×D28×5	1	80.	Wheel	2
29.	Pump plunger	1	81.	Nylon washer	2
30.	Spring □	1	82.	Washer 6	4
31.	Spring □	1	83.	Nut M6	6
32.	Pump bass	1	84.	Chassis	1
33.	Mesh	1	85.	Hex soch screw M6×16	1
34.	Washer d5×D9	1	86.	Fix slider	4
35.	Spring	2	87.	Movable slider	4
36.	O-ring D14×2.4	1	88.	Screw bolt M10×70	1
37.	Plug	1	89.	Bushing	1
38.	Reflux rod	1	90.	Scissors lever	1
39.	O-ring d4×1.8	1	91.	Table	1
40.	Guide casing	1	92.	Handle knob M12×φ40	1
41.	O-ring d10.6×2.65	1	93.	Nut M8	1
42.	Supporting block	2	94.	Control link	1
43.	Lever	1	95.	Anchor plate for control link	1
44.	Split pin 1.6×10	2	96.	Steel wire	1
45.	Pin	1	97.	Tube for steel wire	1
46.	Adjust bushing	1	98.	Handle	1
47.	Nut M8	2	99.	Screw bolt M8×20	1
48.	Steel ball 5	1	100.	Bolt M5×10	4
49.	Spring base	1	101.	Spring washer 5	4
50.	Regulating pressure spring	1	102.	Washer 5	4
51.	Regulating pressure screw	1	103.	Bolt	1
52.	O-ring d7.1×1.8	1	104.	Tension spring	1

LIMITED WARRANTY

Vestil Manufacturing Corporation (“Vestil”) warrants this product to be free of defects in material and workmanship during the warranty period. *Our warranty obligation is to provide a replacement for a defective original part if the part is covered by the warranty, after we receive a proper request from the warrantee (you) for warranty service.*

Who may request service?

Only a warrantee may request service. *You are a warrantee if you purchased the product from Vestil or from an authorized distributor AND Vestil has been fully paid.*

What is an “original part”?

An original part is a part used to make the product as shipped to the warrantee.

What is a “proper request”?

A request for warranty service is proper if Vestil receives: 1) a photocopy of the Customer Invoice that displays the shipping date; AND 2) a written request for warranty service including your name and phone number. Send requests by any of the following methods:

Mail
Vestil Manufacturing Corporation
2999 North Wayne Street, PO Box 507
Angola, IN 46703

Fax
(260) 665-1339
Phone
(260) 665-7586

Email
sales@vestil.com

In the written request, list the parts believed to be defective and include the address where replacements should be delivered.

What is covered under the warranty?

After Vestil receives your request for warranty service, an authorized representative will contact you to determine whether your claim is covered by the warranty. Before providing warranty service, Vestil may require you to send the entire product, or just the defective part or parts, to its facility in Angola, IN. The warranty covers defects in the following *original* dynamic components: motors, hydraulic pumps, electronic controllers, switches and cylinders. It also covers defects in *original* parts that wear under normal usage conditions (“wearing parts”): bearings, hoses, wheels, seals, brushes, batteries, and the battery charger.

How long is the warranty period?

The warranty period for original components is 90 days. The warranty period begins on the date when Vestil ships the product to the warrantee. If the product was purchased from an authorized distributor, the period begins when the distributor ships the product. Vestil may extend the warranty period for products shipped from authorized distributors by *up to 30 days* to account for shipping time.

If a defective part is covered by the warranty, what will Vestil do to correct the problem?

Vestil will provide an appropriate replacement for any *covered* part. An authorized representative of Vestil will contact you to discuss your claim.

What is not covered by the warranty?

1. Labor;
2. Freight;
3. Occurrence of any of the following, which automatically voids the warranty:
 - Product misuse;
 - Negligent operation or repair;
 - Corrosion or use in corrosive environments;
 - Inadequate or improper maintenance;
 - Damage sustained during shipping;
 - Collisions or other incidental contacts causing damage to the product;
 - Unauthorized modifications: DO NOT modify the product IN ANY WAY without first receiving written authorization from Vestil. Modification(s) might make the product unsafe to use or might cause excessive and/or abnormal wear.

Do any other warranties apply to the product?

Vestil Manufacturing Corp. makes no other express warranties. All implied warranties are disclaimed to the extent allowed by law. Any implied warranty not disclaimed is limited in scope to the terms of this Limited Warranty.

