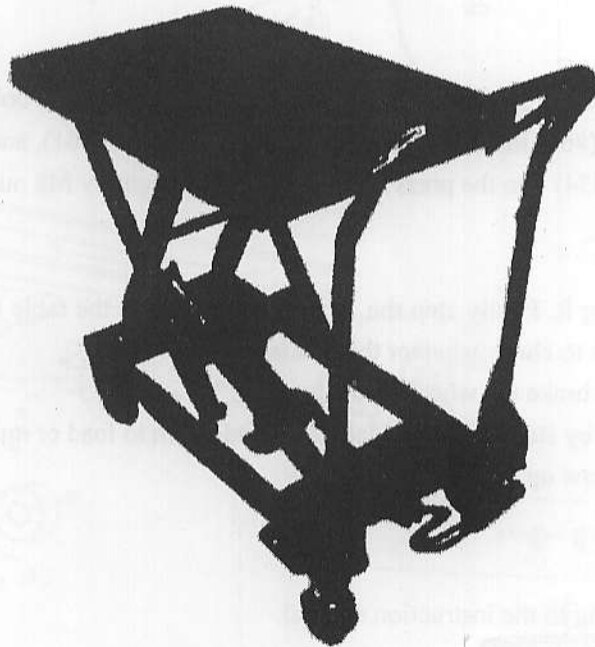


INSTRUCTION MANUAL

HYDRAULIC TABLE TRUCK



CART-
1000-LD

Model: TF 30/50/50B

TF 30/50/50B Hydraulic Table Truck (Cable Release 2)

I. Use & applicable range

It is a convertible vehicle using for lifting and transporting in workshop, warehouse and wharf, etc.

II. Basic Data:

Model	TF 30	TF 50	TF50B
Load Capacity	300kgs	500kgs	500kgs
Lift Height	900mm	900mm	900mm
Lowest Height	280/380mm	290/385mm	295/390mm
Table Dimensions	825×500×50mm	825×500×55mm	1600×800×55mm
Packing Dimensions	900×520×300/400mm	900×520×300/400mm	1685×830×310/410mm
Net Weight	76kgs	84kgs	135kgs

III. Installing

1. Install the handle (#27) on the frame seat (#12), and fix them by two M12 bolts.
2. Insert the foot pedal rod (#65) into the hole of the foot pedal holder (#61), and fix them by M8 bolt.
3. Insert the brake thread (#34) into the press bolt (#47), and fix them by M8 nut.

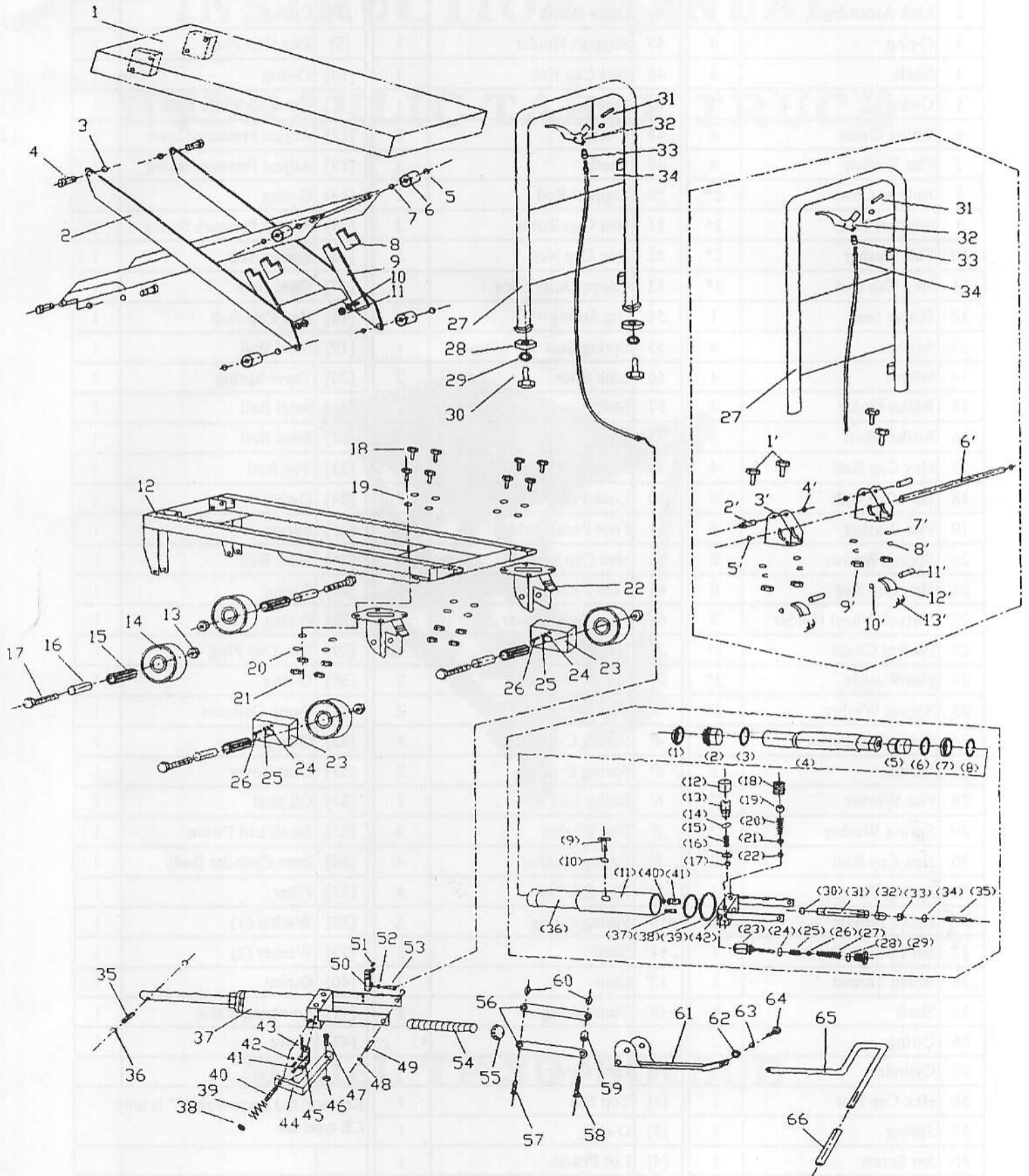
IV. Using

1. Test the cart before using it. Firstly step the foot pedal rod to lift the table to the max height, and then release the limit oil valve to check whether the cart is ok.
2. Please fix the cart and to brake the wheel before loading.
3. Adjust the table's height by step the foot pedal lift up and down to load or unloading in its rated loading.
4. When lower the table, draw up the handle.

V. Warning

- (1) Operate strictly according to the instruction manual.
- (2) Do not use the cart on slop.
- (3) Do not allow people to sit or ride on the cart.
- (4) Keep feet and hand away from under the lowering table. Suggest to wear safety shoes during operation.
- (5) Do not transport the loads during the raising process.
- (6) Do not random regulate the safety valve.
- (7) The maintenance is to be performed by the professional person
- (8) Failure to operate the cart will cause the damage to the person health or property loss.
- (9) The cart must used in the rated capacity, it is not permit to load the heavy goods that the rated capacity of the cart.

TF30/50 Hand-hydraulic Table Truck



TF 30/50/50B Hydraulic Table Truck (Cable Release 2)

No.	Description	Q'ty	No.	Description	Q'ty	No.	Description	Q'ty
1	Table	1	43	Spring Pin	1	[7]	Oil Seal	1
2	Link Assembly	1	44	Draw Board	1	[8]	C-ring	1
3	C-ring	4	45	Support Holder	1	[9]	Hex Cap Plug	1
4	Shaft	4	46	Hex Cap Nut	1	[10]	O-ring	1
5	C-ring	4	47	Screw	1	[11]	Outer Cylinder Body	1
6	Roller Guide	4	48	C-ring	2	[12]	Adjust Pressure Cover	1
7	Flat Washer	4	49	Shaft	1	[13]	Adjust Pressure Screw	1
8	Rubber Cover	2*	50	Support Rod	1	[14]	O-ring	1
9	Support Rod	2*	51	Hex Cap Screw	2	[15]	Adjust Pressure Spring	1
10	Flat Washer	2*	52	Hex Cap Nut	1	[16]	Spring Seat	1
11	Hex Cap Nut	2*	53	Copper Joint Slice	1	[17]	Steel Ball	1
12	Frame Seat	1	54	Big Spring	1	[18]	Hex Cap Bolt	1
13	Set Nut	4	55	Spring Seat	1	[19]	Steel Ball	1
14	Wheel	4	56	Link Slice	2	[20]	Taper Spring	1
15	Roller Guide	4	57	Shaft	1	[21]	Steel Ball	1
16	Roller Shaft	4	58	Shaft	1	[22]	Steel Ball	1
17	Hex Cap Bolt	4	59	Separate Cover	1	[23]	Top Rod	1
18	Hex Cap Bolt	8	60	Lock Pin	2	[24]	O-ring	1
19	Flat Washer	8	61	Foot Pedal Holder	1	[25]	Spring	1
20	Spring Washer	8	62	Hex Cap Screw	1	[26]	Steel Ball	1
21	Hex Cap Nut	8	63	Foot Pedal Rod	1	[27]	Spring	1
22	Swivel Wheel Holder	2	64	Foot Pedal Cover	1	[28]	O-ring	1
23	Protect Cover	2*	1'	Hex Cap Bolt	4	[29]	Hex Cap Plug	1
24	Flat Washer	2*	2'	Shaft	2	[30]	O-ring	1
25	Spring Washer	2*	3'	Folded Holder	2	[31]	Pump Cylinder	1
26	Semicircle Screw	2*	4'	Spring C-ring	4	[32]	O-ring	1
27	Handle	1	5'	Spring C-ring	2	[33]	Dust Cover	1
28	Flat Washer	2	6'	Brake Rod	1	[34]	Oil Seal	1
29	Spring Washer	2	7'	Flat Washer	4	[35]	Small Lift Piston	1
30	Hex Cap Bolt	2	8'	Spring Washer	4	[36]	Inter Cylinder Body	1
31	Spring Pin	1	9'	Hex Cap Nut	4	[37]	Filter	1
32	Brake Handle	1	10'	Spring C-ring	2	[38]	Washer (1)	1
33	Set Postion Cover	1	11'	Shaft	2	[39]	Washer (2)	1
34	Brake Thread	1	12'	Cam	2	[40]	O-ring	1
35	Shaft	1	13'	Turn Spring	2	[41]	Lowering Valve	1
36	C-ring	2				[42]	Valve	1
37	Cylinder	1	[1]	Dust Cover	1			
38	Hex Cap Nut	1	[2]	Top Nut	1			
39	Spring	1	[3]	O-ring	1			
40	Set Screw	1	[4]	Lift Piston	1			
41	Hex Cap Screw	2	[5]	Piston	1			
42	Spring Washer	2	[6]	O-ring	1			

Remark: the parts with "*" is only CE type use.

Vestil

Quality Assurance and Deviation Inspection Sheet

Cart 400, 650LT, 800D, 1000, 1500

Cart Model	1000
Manufacture Date	2004.8
Inspectors Name	PAN
Inspection Date	2004.8
Empty Tests	
Number strokes up	55
Down Time	8 Seconds
Maximum Height	35.9 Inches
Minimum Height	15.6 Inches
Weight Tests	
Number strokes HS	56
Number of strokes LS	5
Shift Weight	1100 Pounds
Test Weight	1210 Pounds
Down Time	6 Seconds
Leak Test (hold full load for 15min w/out drift down)	<input checked="" type="checkbox"/> YES/NO
Acceptable (Reasons if Not)	<input checked="" type="checkbox"/> YES/NO
Deviations from Norm	

LIMITED WARRANTY

Vestil Manufacturing Corporation (“Vestil”) warrants this product to be free of defects in material and workmanship during the warranty period. *Our warranty obligation is to provide a replacement for a defective original part if the part is covered by the warranty, after we receive a proper request from the warrantee (you) for warranty service.*

Who may request service?

Only a warrantee may request service. *You are a warrantee if* you purchased the product from Vestil or from an authorized distributor AND Vestil has been fully paid.

What is an “original part”?

An original part is a part used to make the product as shipped to the warrantee.

What is a “proper request”?

A request for warranty service is proper if Vestil receives: 1) a photocopy of the Customer Invoice that displays the shipping date; AND 2) a written request for warranty service including your name and phone number. Send requests by any of the following methods:

Mail
Vestil Manufacturing Corporation
2999 North Wayne Street, PO Box 507
Angola, IN 46703

Fax
(260) 665-1339
Phone
(260) 665-7586

Email
sales@vestil.com

In the written request, list the parts believed to be defective and include the address where replacements should be delivered.

What is covered under the warranty?

After Vestil receives your request for warranty service, an authorized representative will contact you to determine whether your claim is covered by the warranty. Before providing warranty service, Vestil may require you to send the entire product, or just the defective part or parts, to its facility in Angola, IN. The warranty covers defects in the following *original* dynamic components: motors, hydraulic pumps, electronic controllers, switches and cylinders. It also covers defects in *original* parts that wear under normal usage conditions (“wearing parts”): bearings, hoses, wheels, seals, brushes, batteries, and the battery charger.

How long is the warranty period?

The warranty period for original components is 90 days. The warranty period begins on the date when Vestil ships the product to the warrantee. If the product was purchased from an authorized distributor, the period begins when the distributor ships the product. Vestil may extend the warranty period for products shipped from authorized distributors by *up to* 30 days to account for shipping time.

If a defective part is covered by the warranty, what will Vestil do to correct the problem?

Vestil will provide an appropriate replacement for any *covered* part. An authorized representative of Vestil will contact you to discuss your claim.

What is not covered by the warranty?

1. Labor;
2. Freight;
3. Occurrence of any of the following, which automatically voids the warranty:
 - Product misuse;
 - Negligent operation or repair;
 - Corrosion or use in corrosive environments;
 - Inadequate or improper maintenance;
 - Damage sustained during shipping;
 - Collisions or other incidental contacts causing damage to the product;
 - Unauthorized modifications: DO NOT modify the product IN ANY WAY without first receiving written authorization from Vestil. Modification(s) might make the product unsafe to use or might cause excessive and/or abnormal wear.

Do any other warranties apply to the product?

Vestil Manufacturing Corp. makes no other express warranties. All implied warranties are disclaimed to the extent allowed by law. Any implied warranty not disclaimed is limited in scope to the terms of this Limited Warranty.

