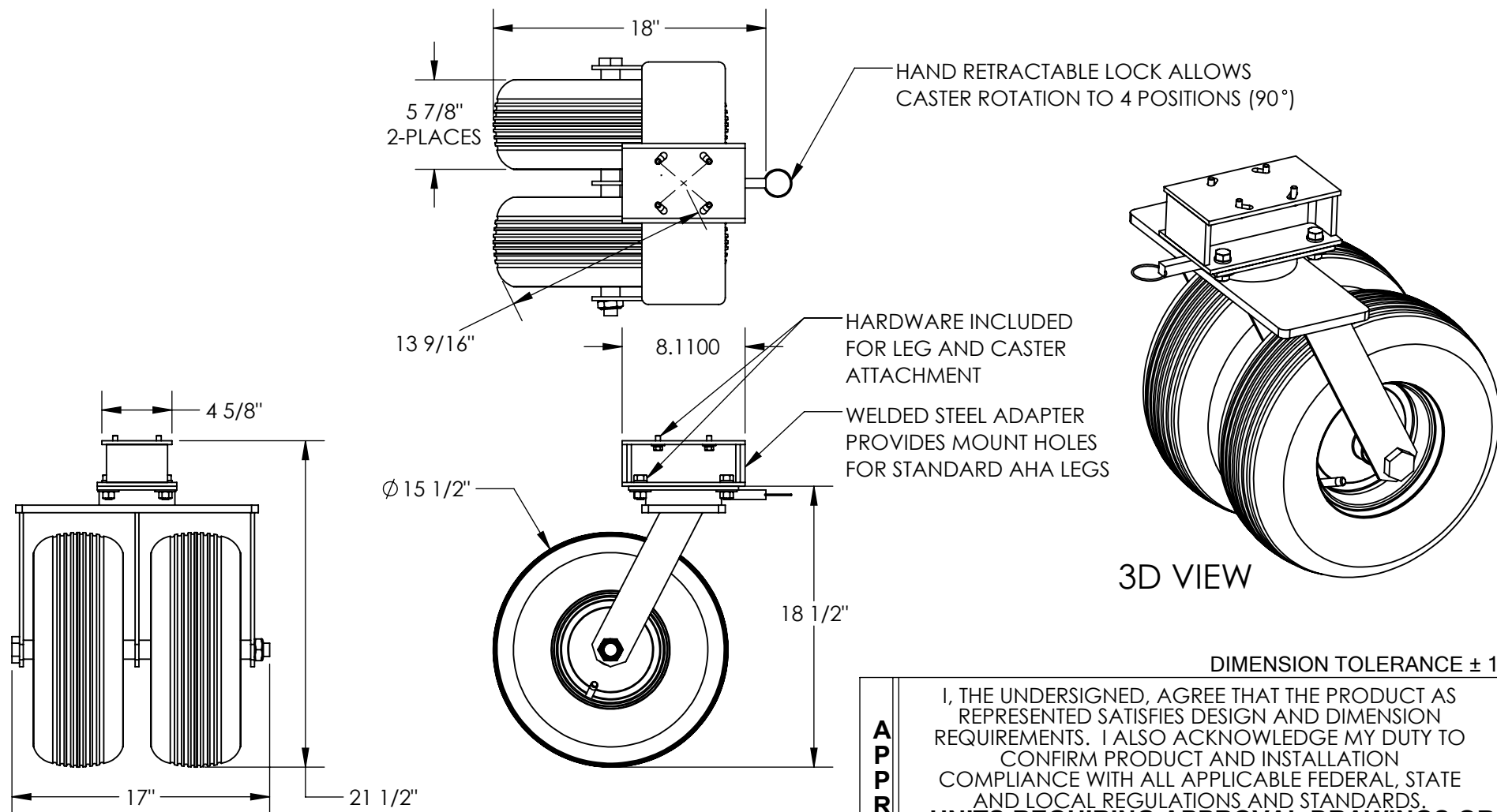


# DUAL TIRE PNEUMATIC CASTER - AHS-PNU-DT-RF

APPROX WEIGHT: 55.95 lbs.  
DOES NOT INCLUDE WEIGHT OF POWER OR PACKAGING!!!

\*\*\* ANY ADDITIONS, DELETIONS, OR OMISSIONS MUST BE CORRECTED ON THIS DRAWING AS THIS DRAWING WILL BE CONSIDERED ALL INCLUSIVE \*\*\*  
ALL GRAPHICS PROVIDED ARE FOR REFERENCE ONLY. IF CERTAIN DIMENSIONS ARE CRITICAL PLEASE VERIFY THOSE DIMENSIONS WITH YOUR SALESPERSON



NOTE: HEIGHT OF STANDARD AHS CASTER IS 9 1/2"

## STANDARD FEATURES

- MODEL NUMBER IS AHS-PNU-DT-RF
- REPLACES (1) STANDARD CASTER ON AHS 2K/4K UNITS
- SWIVEL CASTER WITH (2) AIR FILLED RUBBER TIRES
- OVERALL WIDTH IS 17"
- OVERALL LENGTH IS 18"
- OVERALL HEIGHT IS 21 1/2"
- WILL INCREASE THE STD CRANE HEIGHT BY 12"
- MAX CAPACITY IS 1,000 POUNDS

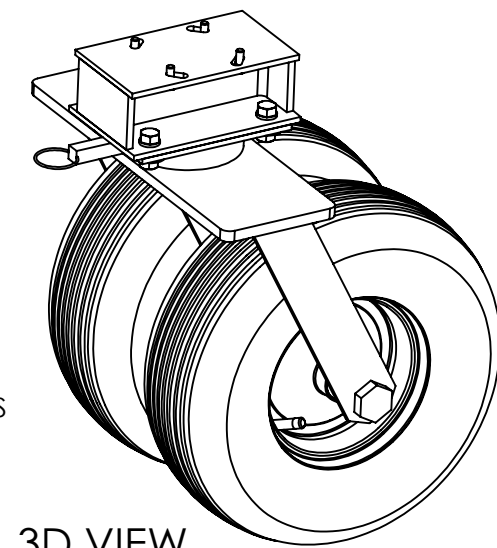
## SPECIAL FEATURES

NONE

HAND RETRACTABLE LOCK ALLOWS CASTER ROTATION TO 4 POSITIONS (90°)

HARDWARE INCLUDED FOR LEG AND CASTER ATTACHMENT

WELDED STEEL ADAPTER PROVIDES MOUNT HOLES FOR STANDARD AHA LEGS



3D VIEW

DIMENSION TOLERANCE ± 1/4"

**APPROVAL**

I, THE UNDERSIGNED, AGREE THAT THE PRODUCT AS REPRESENTED SATISFIES DESIGN AND DIMENSION REQUIREMENTS. I ALSO ACKNOWLEDGE MY DUTY TO CONFIRM PRODUCT AND INSTALLATION COMPLIANCE WITH ALL APPLICABLE FEDERAL, STATE AND LOCAL REGULATIONS AND STANDARDS.

**UNITS REQUIRING APPROVAL DRAWINGS OR MODIFIED ARE NON-RETURNABLE**

As drawn       As marked

Signed: \_\_\_\_\_ Date: \_\_\_\_\_

Printed Name: \_\_\_\_\_

*LEAD TIME WILL START UPON RECEIPT OF SIGNED APPROVAL DRAWING*

DISTRIBUTOR'S NAME:		P.O.#
VESTIL MANUFACTURING		X
DRAWN BY: MTS		DATE: 01/14/2021
REFERENCE: X		SALES: X
QUOTED LEAD TIME: X		SCALE: 1:10
QUOTE # X		FILE NAME: 28-007-458