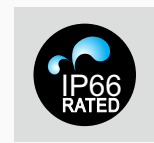




# LED Shoebox Light 100W~300W



G GJIA LED Shoebox Area Light Fixture is the perfect solution to illuminate large outdoor areas. It features advanced designed optics for improved light utilization and evenness. The fixture is an ideal replacement for HID/ metal halide and reduces wattages as much as 75%. With over 140 LPW, reduce energy and maintenance costs, while improving the appearance of any outdoor environment.



[WWW.GGJIA-LED.COM](http://WWW.GGJIA-LED.COM)

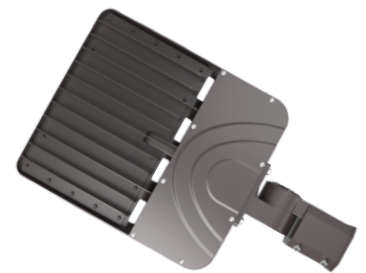
Add: 100 N HOWARD ST STE R SPOKANE WA 99201  
Tel: +1(626)977-6424 E-mail: [sales@ggjia-led.com](mailto:sales@ggjia-led.com)

## Features:

- Light Efficiency: 140lm/W;
- Optics of Type III and Type IV available on request;
- High-transmittance and anti-UV Polycarbonate lens;
- Excellent thermal management design;
- Die-casting aluminum with polyester powder coat finish;
- IP66/IK08 rating for outdoor usage;
- Easy installation and low maintenance;
- Energy savings, no UV and IR radiations, emits low heat;
- Optional light-controlled and microwave induction function
- ETL/cETL/FCC/CE/RoHS approval;
- 5 years warranty

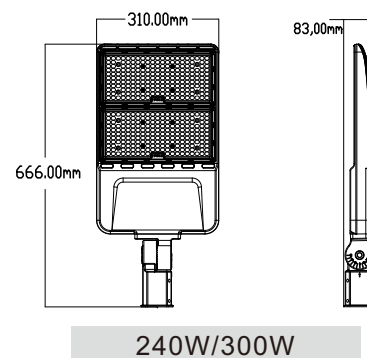
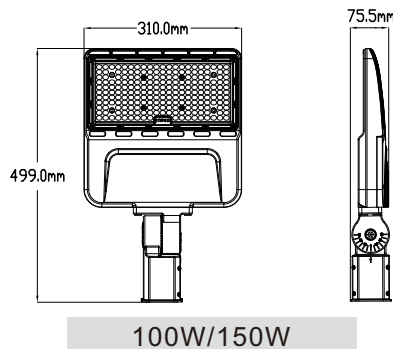
## Specifications

<b>Model</b>	<b>RMS-L2117XXX</b>
Wattage	100W/150W/240W/300W
Luminous Flux	140LM/W
Beam Angle	Type III / Type IV
Color Temperature	3000K~6000K
Input Voltage	100-277Vac/200-480Vac, 50/60Hz
Life Hours	50,000
LED Brand	PHILIPS LUMILEDS
CRI	Ra>70
PF	>0.9
Surge Voltage	4KV; 10KV/20KV optional
Operation Temperature	-35°C~55°C
IP Rating	IP66
Warranty	5-year
Mounting bracket	Slip Fitter



## Dimension


Unit: mm



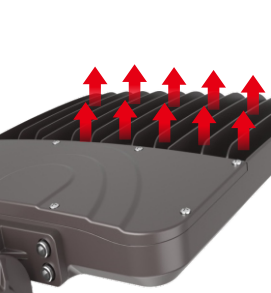
## Details




- High bright PHILIPS LUMILEDS, LM80 listed. Light Efficiency up to 140lm/W.




- SOSEN/LIFUD/ MEANWELL LED driver, 1-10V dimming optional, high reliable, offer 5 years warranty.




- Heat sink with fin design good for heat dissipation.



- Die-cast and powder coated aluminium housing.



- Photocell sensor for dusk to dawn usage, can be bypassed with shorting cap if not needed.

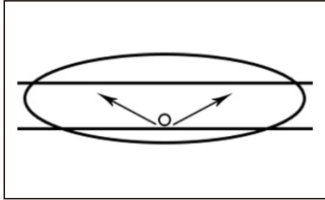


- Motion Sensor, can light up 100% when motion is detected within range

## Beam Angle

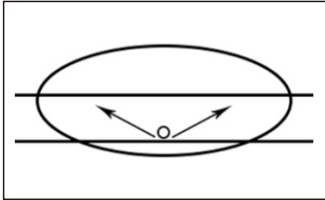
### Type III

The Type III distribution is meant for roadway lighting, general parking areas and other areas where a larger area of lighting is required. Type III lighting needs to be placed to the side of the area, allowing the light to project outward and fill the area. This produces a filling light flow.



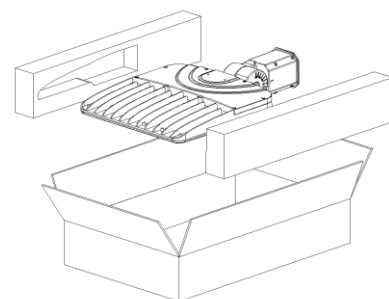
### Type IV

The Type IV distribution produces a semicircular light meant for mounting on the sides of buildings and walls. It's best for illuminating the perimeter of parking areas and businesses.



## Packaging

<b>Power</b>	100W	150W	240W	300W
<b>N. W.</b>	3.75kg		5.20kg	
<b>G. W.</b>	4.80kg		6.50kg	
<b>Carton Size</b>	L540xW350xH120mm		L540xW350xH120mm	



## Installation Instruction

**\* Warning: Do cut off electrical source in order to avoid electrical shock and endanger life-safety before installation.**

**\* Install height from floor higher than 1.2m.**

### Step 1:

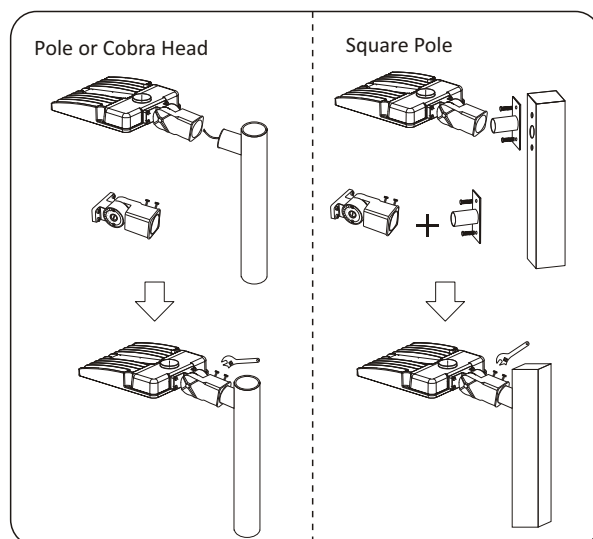
Start installation of the street light.  
Turn the street light to the back side, loose the 2 screws on the swivel.

### Step 2:

Connect the cables.  
Connect the L,N,GND cables on the lamp to the corresponding L,N,GND cables on the lamp pole.

### Step 3:

Fixation of the LED Street Lights  
Install the street light to the lamp pole, adjust the LED street light to be of horizontal level. Fasten the 2 screws on the swivel.



## Application

LED Shoebox light is perfect fixture for medium height parking lot poles and new construction applications in industrial, warehouse, manufacturing, commercial, office, residential, and hospitality facilities.

