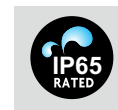


# LED High Bay Light (Power Adjustable Version)



**Switchable Wattage,  
Less SKU, optimize  
inventory turnover**



## Features:

- \* Light Efficiency: 150lm/W;
- \* Unique design, multiple power settings controlled by a dip switch
- \* High bright EPISTAR LEDs;
- \* Optics of 120°/ 90°/60°available on request;
- \* High-transmittance and anti-UV Polycarbonate lens;
- \* Excellent thermal management design;
- \* Die-casting aluminum with polyester powder coat finish;
- \* IP65/IK08 rating for outdoor usage;
- \* Hook hanging and U-bracket installation are available;
- \* Energy savings, no UV and IR radiations, emits low heat;
- \* 0-10V dimming for low power consumption;
- \* ETL/cETL/SAA/DLC/C-TICK/FCC/CE/RoHS approval;
- \* 5 years warranty



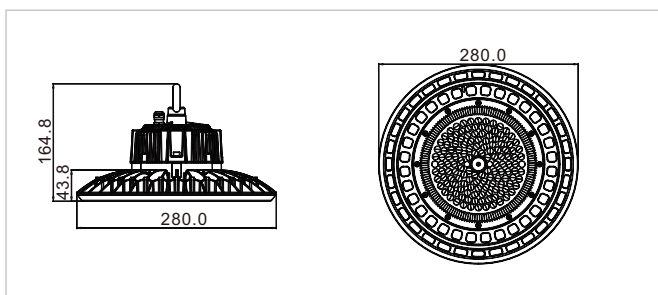
## Specifications:

Model	RMS-HB-XXXW-AJ
Wattage	100W(80W/60W),150W(120W/90W), 200W(150W/120W),240W(200W/150W)
Luminous Flux	150LM/W
Beam Angle	120°/90°/60°
Color Temperature	3000K~6000K
Input Voltage	AC100-277V, 50-60Hz
LED Brand	EPISTAR
CRI	Ra>70
PF	>0.9
Life Hours	50,000
Operation Temperature	-35°C~55°C
IP Rating	IP65

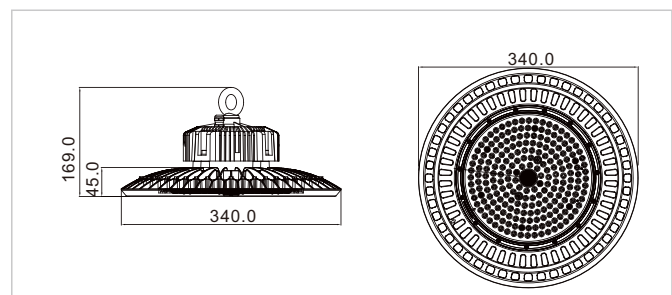


## Dimension:

Unit: mm

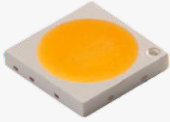


100W(80W/60W),150W(90W/120W)



200W(150W/120W),240W(200W/150W)

## Details:



- High bright EPISTAR SMD 2835, Lm80 listed. Whole lamp is 150LPW

### LIFUD®



- LIFUD LED driver, 0-10V dimming, high reliable, offer 5 years warranty



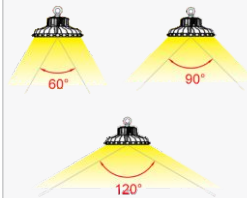
- The switch selector allows customers to simply select different wattages.



- Die cast hook mount standard for ease of installation, surface mounted baracket optional.



- Die cast aluminum alloy body, cooling fins provide maximum heat dissipation.



- 3 kinds of beam angle options to suit different lighting requirements in different areas.



- 60°/90° of PC/Aluminum Reflectors are optional.



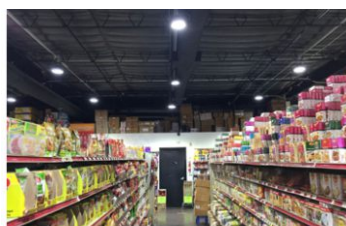
- IP65 waterproof for wet location

## Application:

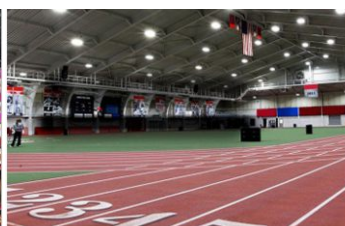
LED UFO high bay fixtures are ideal for Warehouses, Manufacturing Facilities, Gymnasiums, Aviation Hangars, Convention Centers, Big Box Retail Stores, Cold Storage Facilities.



Factory workshop



Large supermarkets



Sports venues



Airport

# Installation Instruction:

## 1. Hook hanging Installation



## 2. Bracket Mounted Installation



**Step 1**

Screw the Circular Ring Tightly

**Step 2** **Disconnect power**

Hang the Safety chain on the Hook

**Step 3** **Disconnect power**

Lock Circular Ring to the Safety Chain carefully

**Step 4** **Disconnect power**

Input Junction box LED

L-Brown N - Blue ⊕Green/Yellow  
Then light up the lamp

**Note:**

① AC 100-277V Cable

L Brown  
N Blue  
⊕ Green / Yellow

**Warning**  
• Please make sure the power off before operation

**Step 1**

100mm  
13

For Reference

**Step 2** **Disconnect power**

100mm or 3.94 in  
Expansion Screw  
Takes off the nut after expansion screws are well mounted  
Hammer

**Step 3** **Disconnect power**

Tight the nuts to expansion screws  
Double check of all drilled holes are right position as canopy outlet before mounted. Use a hammer to hit expansion crews tightly to ceiling, make sure its not loose.

**Step 4** **Disconnect power**

Input Junction box LED

L-Brown N - Blue ⊕Green/Yellow  
Then light up the lamp

**Note:**

① AC 100-277V Cable

L Brown  
N Blue  
⊕ Green / Yellow

**Warning**  
• Please make sure the power off before operation

# Optional Accessories:

