

The background features a central black vertical rectangle. To the left, a white area contains diagonal hatching. To the right, a white area contains diagonal hatching. Several triangles are scattered: a grey triangle pointing down at the top left, a black triangle pointing left at the top right, a grey triangle pointing right in the middle right, and a black triangle pointing up at the bottom right. A grey triangle pointing right is located at the bottom left, pointing towards the text 'User Guide'.

iTECHWORLD

# ITECH300 PRO

Portable Power Station

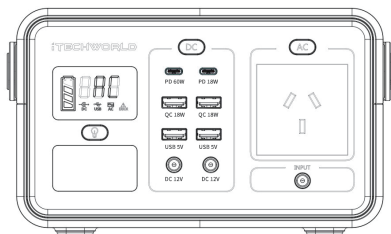
User Guide

# INTRODUCTION

## ITECH300 Pro

The iTECH300 Pro is a portable power station for short weekend trips and emergency black out situations. There are 3 different methods of recharging the iTECH300 Pro AC 240V, DC 12V and Solar. The iTECH300 Pro has advanced battery protection and a retro design that makes for a lightweight and easy on the eye power station. The inverter in the iTECH300 Pro provides a Pure Sine Wave output, which is compatible with all AC electrical appliances. Before using or storing your iTECH300 Pro please fully charge the device.

**iTECHWORLD** The Power Expert

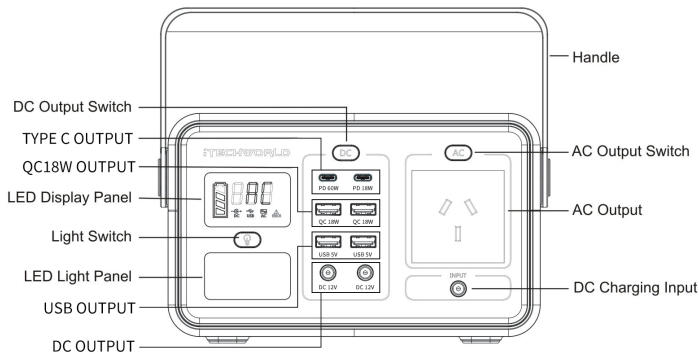


**PORTABLE POWER STATION**

**ITECH300 Pro**

# KNOW YOUR GEAR

ITECH300 Pro



# 12V DC OUTPUT

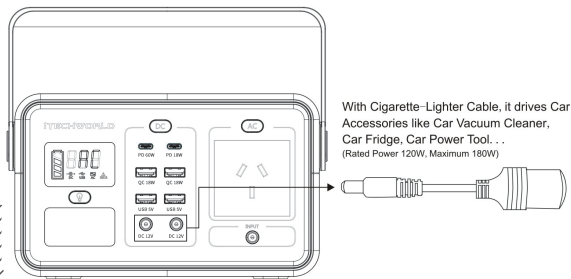
## iTECH300 Pro

The iTECH300 Pro has 2x 12V outputs with a voltage range of 12V-16.8V. The rated current is 10A continuous and 15A peak.

To use the 12V output on the iTECH300 Pro, firstly connect the female 12V cigarette-lighter power cable into one of the 12V outputs (see image below).

Switch on the "DC button". The DC indicator on the LED display will light up, and the unit will start providing power to your 12V appliance. Please note if nothing is plugged into the DC output the iTECH300 Pro will automatically turn off the DC output to save power.

### DC Output: Cigarette-Lighter



# USB OUTPUT

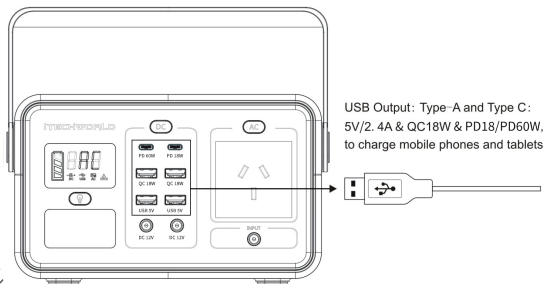
## iTECH300 Pro

The iTECH300 Pro has 2x USB-A (5V/2.4A) outputs, 2x USB-A QC3.0 Quick Charge output, and 2x TYPE C PD output.

Connect the USB cable of the electric appliance to the USB outlet of the iTECH300 Pro (see image below). Switch on the “DC button”, the USB indicator on the LED display will light up, the iTECH300 Pro will start charging your USB appliances such as smart phones, tablets, Bluetooth speakers, etc.

Please note if nothing is plugged into the USB output the iTECH300 Pro will automatically turn off the USB output to save power.

## USB Output



# LOCK MODE 12V FRIDGE

## iTECH300 Pro

Some devices like Bluetooth headphones, smart watches, 12v fridges require very small input current to charge or run, which could be less than the current detection limitation of the iTECH300 Pro.

To be able to recharge and run such devices, press and hold the “DC button” for 5 seconds. This will turn the “DC Lock On”. Now the iTECH300 Pro will constantly provide power from the USB ports and the 12v DC Output. Your iTECH300 Pro will now be able to run items such as a 12v fridge with no interruptions. To turn this mode off press the “DC button”.

When the “DC Lock On” mode is on, the “DC Output” and “USB Output” icons on the LED display will keep blinking. When “DC Lock On” is turned off, the two icons will stop blinking and become solid. DC outputs and USB outputs will now turn off.

# AC OUTPUT

## ITECH300 Pro

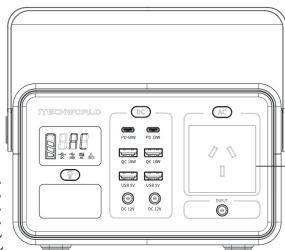
The iTECH300 Pro has 1x AC 240v Output, The rated power is 300W with a peak power 600W. Please note that peak power is only available for a split second.

To use the AC output on the iTECH300 Pro, connect the power cable plug of the electric appliance to the AC outlet. Switch on the "AC button", the AC indicator on the LED display will light up, and the unit will start providing power to your appliances.

The iTECH300 Pro has a "3 second" delay from pressing the AC button to AC voltage output. This is a soft start delay.

If the load you are using exceeds the iTECH300 Pro's rated AC output, the AC output will turn off and the LED Display will show that the AC is wrong.

## AC Output



AC Electronic Appliances:  
like LED Bulb, Fan, Laptop, TV...  
(Rated Power 200W, Peak Power 400W)



# LED LIGHT

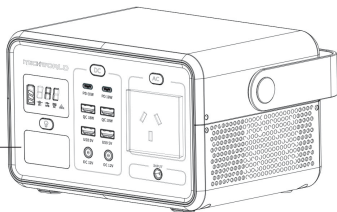
## ITECH300 Pro

The iTECH300 Pro has an in-built ultra bright LED flashlight, which can provide a lighting solution for camping, power outages and emergency situations.

Press the "flashlight button" to switch on the flashlight. Press the "flashlight button" to switch to blink or SOS mode, and then press the "flashlight button" again to switch off.

## LED Lighting

LED Lighting Panel  
3 Modes: Light/Strobe/SOS





# RECHARGING

## ITECH300 Pro

There is a power indicator on the iTECH300 Pro. This indicator will blink to show that the iTECH300 Pro is charging. When the iTECH300 Pro is fully charged all power indicators will stop blinking and remain solid. After the unit is fully charged, remove the charger plug. There are 3 different methods of recharging the iTECH300 Pro AC 240V, DC 12V and Solar.

The iTECH300 Pro is a lithium battery with no memory effect. Therefore there is no need to activate the batteries by charging and discharging.

In order to extend the life of the iTECH300 Pro, please charge it regularly, every 3 months.

The life cycle of the iTECH300 Pro is 2000+ times. After 2000+ times, the capacity will be reduced.

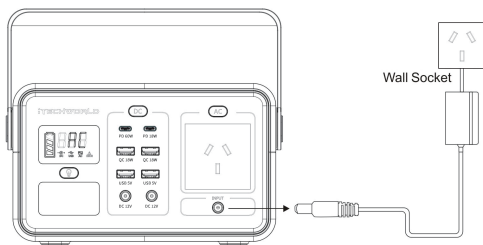
# RECHARGING: AC

## ITECH300 Pro

Using the included AC adapter(15V/3A), plug the iTECH300 Pro via the AC adapter into a 240V wall outlet to quickly charge.

Charging time is approximately 3 hours. Once the iTECH300 Pro reaches 100% charge level, please disconnect.

### Charging: AC Adapter



# RECHARGING: DC

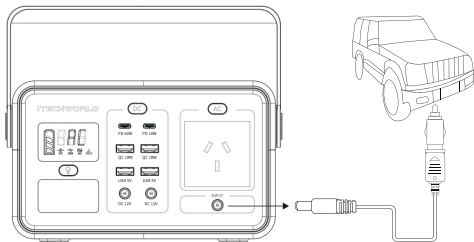
## ITECH300 Pro

Using the included 12v male car charger adapter, plug the iTECH300 Pro into a 12V female cigarette lighter in your car or to a 12v battery source.

If charging from 12v battery and avoid car battery power loss, please charge this unit when your car engine is running.

Once the iTECH300 Pro reaches 100% charge level, please disconnect.

### Charging: Car Charger



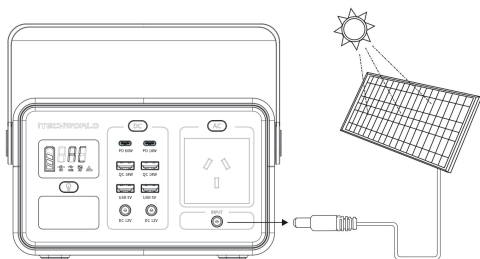
# RECHARGING: SOLAR

## ITECH300 Pro

The iTECH300 Pro has its own in-built MPPT (Maximum Power Point Tracking) regulator. This is compatible with solar panels with a rated voltage of 24v or less. Charging times via solar will vary depending on weather conditions.

Once the iTECH300 Pro reaches 100% charge level, please disconnect.

### Charging: Solar Panel



# PROTECTION

## ITECH300 Pro

The iTECH300 Pro has numerous safety features.

The protection features apply for DC, AC and USB and are as follows:

1. **Low-Voltage Protection:** to protect the battery from over-discharge. When the battery is running out of power, the DC, AC or USB output will automatically turn off.
2. **Over Voltage Protection:** The iTECH300 Pro will switch off if over voltage is detected.
3. **Over Current Protection:** The iTECH300 Pro will switch off if over current is detected.
4. **Short Circuit Protection:** The iTECH300 Pro will switch off if a short circuit is detected.
5. **Over-Temperature Protection:** during the use of AC output, the unit will generate heat. If the temperature becomes too high, the inbuilt fan will automatically start to dissipate heat. This is normal.



# STORAGE

## iTECH300 Pro

It is best to store the iTECH300 Pro with at least 80% charge at a temperature of  $-20\text{ }^{\circ}\text{C}$  -  $50\text{ }^{\circ}\text{C}$ , in a dry environment.

If the iTECH300 Pro is not going to be used for a long time, please disconnect all cables.

If the iTECH300 Pro has to be stored for an extended period of time, it's best to check the charge every 3 months and top up. This will extend the life of the iTECH300 Pro.

Please take care when transporting the iTECH300 Pro. Do not drop it and do not stack things directly on top of the iTECH300 Pro. Ensure that iTECH300 Pro is securely restrained in any vehicle.



# LOOKING AFTER YOUR GEAR

## iTECH300 Pro

Read and understand this users guide before operating your iTECH300 Pro. Do not charge the iTECH300 Pro with a charger that doesn't match this product. Do not expose the iTECH300 Pro to direct sunlight for long periods of time, store in a cool environment out of direct sunlight. Do not disassemble, pierce or drop the iTECH300 Pro. Do not store the iTECH300 Pro for a period longer than a month with no charge, always store with at least 80% charge. Do not cover the iTECH300 Pro with towels, clothing and other items. To help maintain the lithium battery in the iTECH300 Pro always disconnect once charging has reached 100%. Children should not be allowed to operate the iTECH300 Pro unless supervised by a responsible adult.



# CONTACT

ITECH300 Pro

iTechworld  
281 Great Eastern HWY  
Burswood WA 6100

1300 483 249  
[www.itechworld.com.au](http://www.itechworld.com.au)  
[service@itechworld.com.au](mailto:service@itechworld.com.au)