

# iTECHWORLD USER MANUAL

Solar Blanket Kit



Please read this user manual carefully before you're gonna use this solar blanket

## INSTRUCTION

- ❖ The product converting solar energy into electrical energy, which is clean, no pollution, and environmentally friendly. It can be used without geographical restrictions, any place with light can be make it work. And with a bracket equipped, it become more convenient to set up.
- ❖ It uses Mono crystalline solar cells, which is safe and reliable, and has a high conversion rate to sunlight. Our product offers higher performance and reliability than competing products, making it ideal for outdoor activities and well received by our customers.

02

iTECHWORLD SOLAR BLANKET KIT

## WARNING & SAFETY INFORMATION



- ❖ Keep your solar blanket & controller in ventilated area and away from any liquids at all times.
- ❖ Keep the solar blanket and controller clean at all times (always check connectors to ensure they're free of grit before plugging them in)
- ❖ This appliance is not intended to be used by people (including children) with reduced physical or mental capabilities, or those who are under the influence of drugs or alcohol.
- ❖ Do NOT use the solar blanket to charge non-rechargeable batteries. Doing so may result in harm to the user or damage the solar blanket and controller. (This product is for 1 2V batteries)
- ❖ Only use the provided solar blanket, regulator and adapters/wiring provided in the kit. And never tamper with or pull any component of the solar panel, regulator or wiring apart. If you do so, you will void the warranty.
- ❖ The controller is only for this kit, please do not use it for other solar system.
- ❖ Ensure nothing sharp or heavy could potentially break or damage the solar blanket during transport or storage.

iTECHWORLD SOLAR BLANKET KIT

01

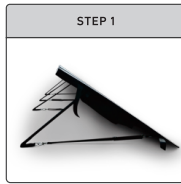
## INCLUDED IN THE KIT



iTECHWORLD SOLAR BLANKET KIT

03

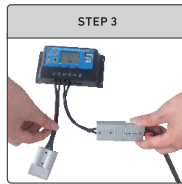
**CONNECTING STEPS**  
Solar Blanket Kit



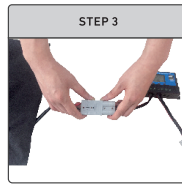
❖ Set up folding solar blanket



❖ Connect battery clip onto the batteries



❖ Connect controller and battery



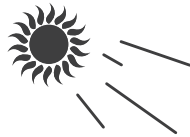
❖ Connect solar blanket with the controller

**\* Precautions**

Make sure the connection is correct. Connect the RED-Positive (+) clamp/wire to the Positive (+) battery terminal. And connect the BLACK-Negative (-) clamp/wire to the Negative (-) battery terminal.

**USER INSTRUCTIONS**

- ❖ Only when facing at the sunshine directly, the solar blanket has the highest working efficiency.



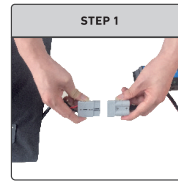
**WARRENTY**

**WHAT DOES THE WARRANTY COVER?**

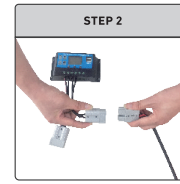
Under normal usage conditions, this warranty covers:

- Any defect in design or manufacture which results in the product failing to perform substantially as described in authorized advertising or literature.
- We will either repair or replace the product at our discretion providing that the fault is found to have been caused by a design or manufacturing defect and not misuse or tampering.

**DISCONNECTING STEPS**  
Solar Blanket Kit



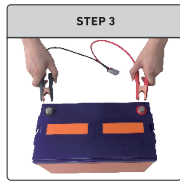
❖ Disconnect solar blanket and controller



❖ Disconnect controller and battery



❖ Fold up the solar blanket and store all accessories into the front bag on solar blanket



❖ Disconnect battery clip from the battery

- You are entitled to a replacement or refund for a major failure and for compensation for any other reasonably foreseeable loss or damage. You are also entitled to have the goods repaired or replaced if the goods fail to be of acceptable quality and the failure does not amount to a major failure. The benefits provided to you as the consumer by this warranty are in addition to other rights and remedies available to you under the law.

**THE WARRANTY DOES NOT COVER:**

- Any damage resulting from improper use
- Faulty installation or modification made during installation
- The cost of removing and re-installing the product
- Travel and or other expenses due to customer's remote location
- Transport charges and damage in transit. It is your responsibility to deliver and pick up your product, including any costs associated with the postage of your repair or replacement product. If you do freight your product we recommend that you insure against loss or damage.
- Any loss directly or indirectly associated with the product failing to operate.
- Damage caused by mould, insects, animals, misuse, incorrect operation, adverse weather, accidents and fair wear and tear.