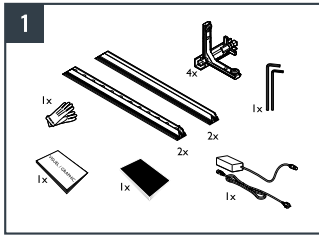


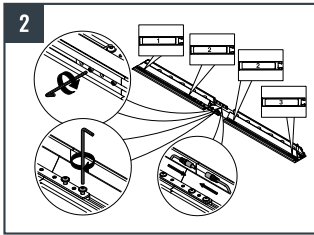
SET-UP INSTRUCTIONS

PANORAMIC LIGHTBOX - PORTABLE

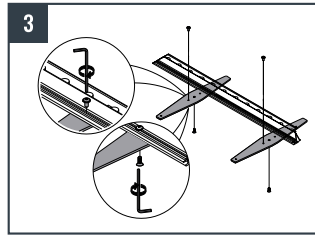


1 *Set up on a clean, clear, flat surface.

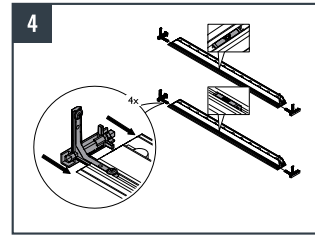
*Use caution when handling the aluminum profiles as the ends may be sharp.



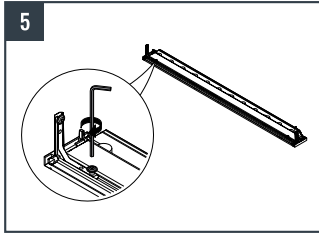
2 For larger frames, connect profiles together ensuring the numbers match. Use the Allen keys to screw the joint connectors in place. Connect electrical cables.



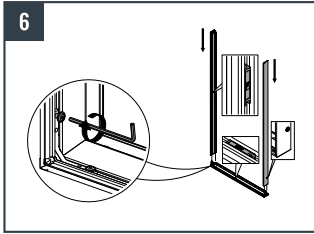
3 If supplied, fasten the feet to the base frame.



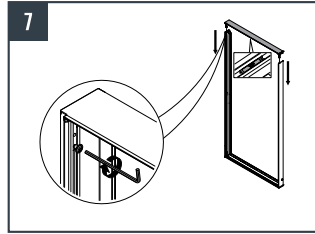
4 Slide the 90-degree connectors into the ends of the base and top profiles.



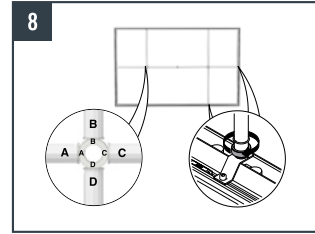
5 Screw the 90-degree connectors in place.



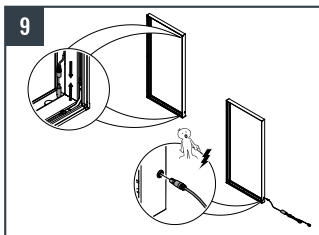
6 One at a time, slide the side profiles over the 90-degree connectors on the base profile and secure in place.



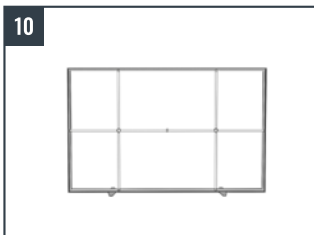
7 Slide the top profile into position and secure in place.



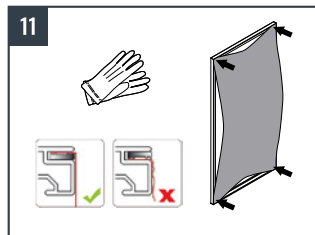
8 If support beams have been supplied, connect and rotate them into place.



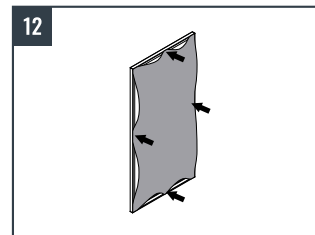
9 Before plugging the lightbox into the power outlet, make sure that all of the internal plugs are connected and the lightbox is set up correctly.



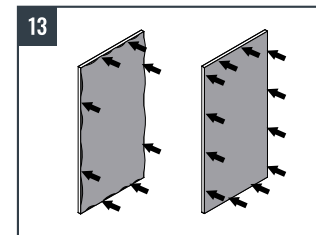
10 The frame is now ready to receive a graphic.



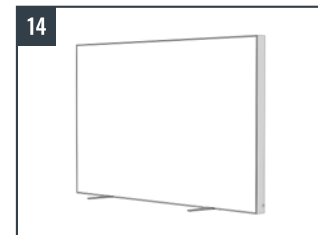
11 Put on the provided white gloves. Insert the graphic in the 4 corners of the frame by pushing the silicone edging into the groove.



12 Insert the silicone edging in the middle of each side of the frame.



13 Work outwards towards the corners while continuing to press downwards on the silicone edging. To avoid stretching, creasing at the edges and dirtying the graphic, do not wipe your hands across the image.



14 Your lightbox is now ready.

