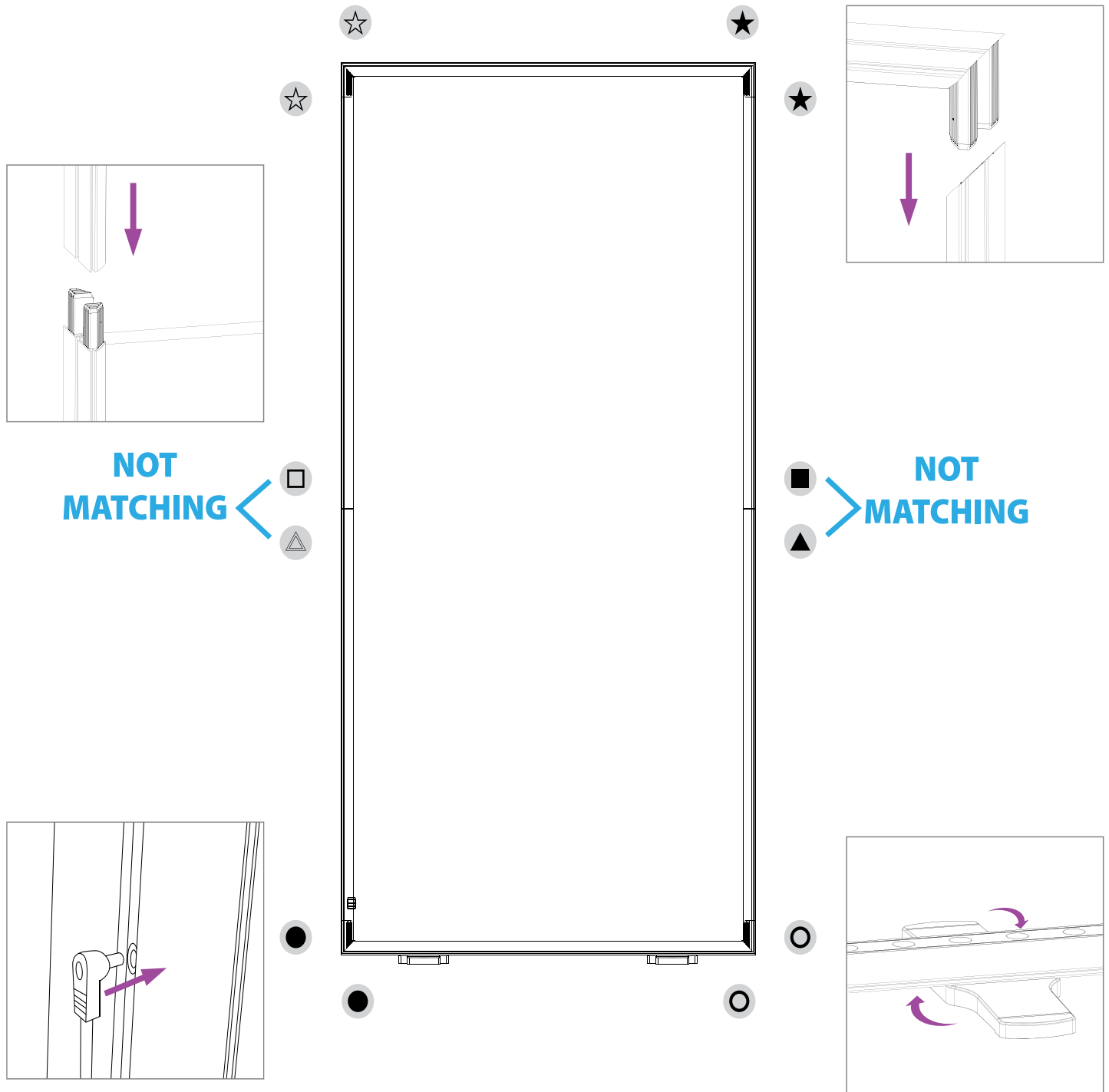
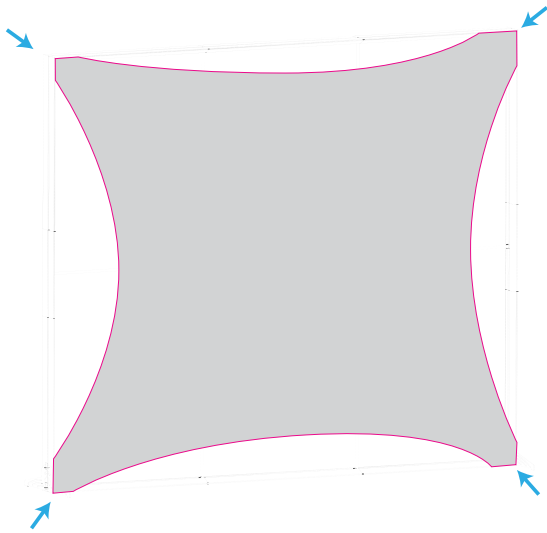


SET-UP INSTRUCTIONS

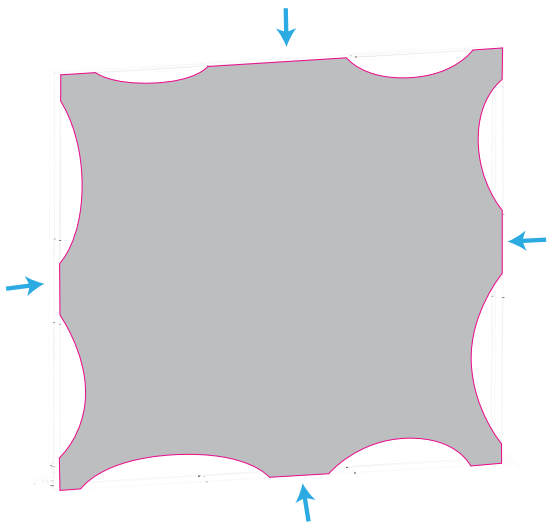
LUCID 3' X 6.5'

STEP 1. Layout all the parts on the floor in this form matching the symbols. Assembly will be done flat on the floor, not standing up. Start in one corner, work around the frame, inserting the tabs into the corresponding segment. The hardware kit includes extra parts for the 8 foot tall configuration.

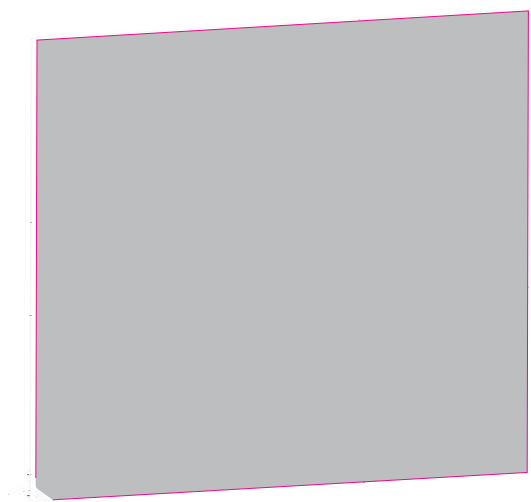




STEP 2. Position the graphic on the frame, make sure the top of the graphic is at the top of the frame. Begin pressing the silicone edge into the frame, start with all 4 corners first.



STEP 3. With the corners of the graphic in place, press the silicone edge in the middle of the frame on all 4 sides.



STEP 4. Finish pressing in all the silicone edge into the frame around the whole frame. Repeat for the other side.