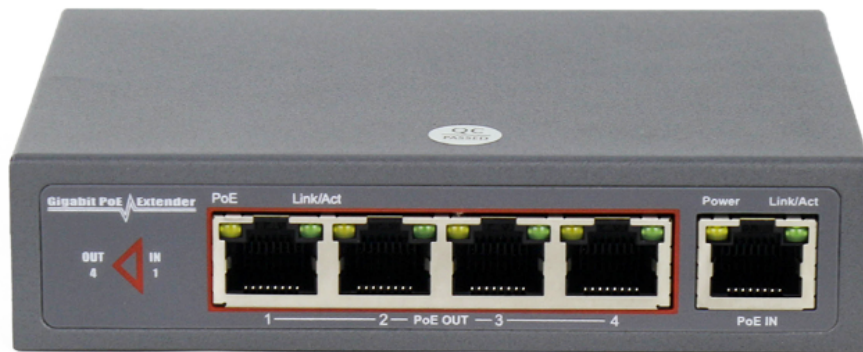


Gigabit Power-over-Ethernet Extender



User Manual

Description

Ethernet and PoE connections both restrict cable distances to 100 meters between network ports. To overcome this distance limit, network installers can simply connect an PoE Extender in-line with the Cat-5e or Cat-6 cable.

With Gigabit PoE Extender, PDs (such as IP Security Cameras, VoIP telephones, wireless access points) can be installed at greater distances than 100 meters from one another. By connecting PoE Extender for every extra 100 meters of cable, both Ethernet and PoE can be extended to 200 meters, depending on PDs power required and power source.

Gigabit PoE Extender does not require any additional power supply and the connected PDs is fed by a single PoE switch or mid-span, which simplifies installation. PoE Extender offers Three Ethernet ports, which are both configured automatically for link speed, duplex and crossover and the full-rate network throughput is maintained. PoE in connection PoE Switch, 12.36 or 45.78 powered support, support IEEE802.3af & at the power supply, PoE out for the supply terminal 4 Gigabit, PoE total power can reach 60w [PoE Switch or PoE Injector need to provide IEEE802.3at 4Pairs(60W) power].

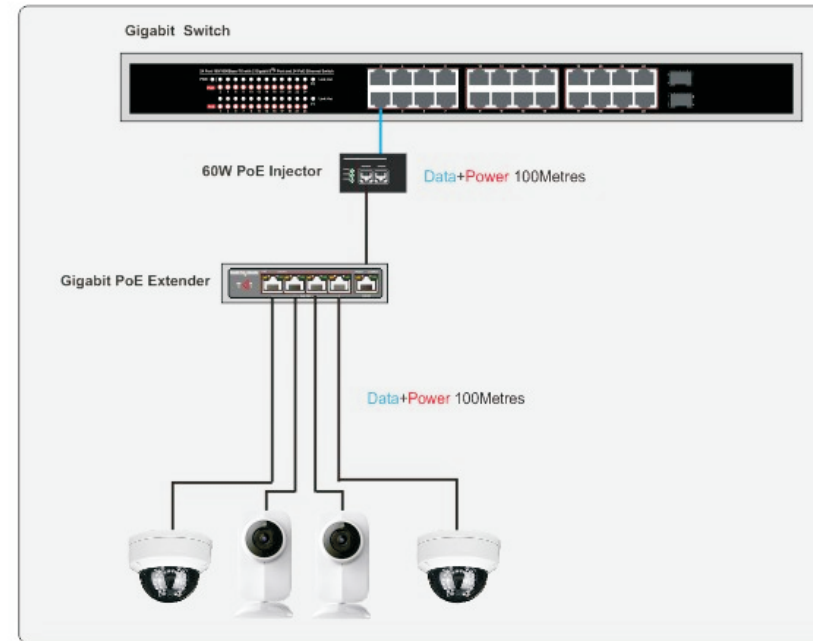
Features

- Compatible with IEEE802.3af and IEEE802.3at and IEEE802.3at 4Pairs
- Extends the range of PoE and Ethernet an additional 100 meters
- No additional power supply is required
- Automatically detects and protects PoE equipments from being damaged by incorrect installation
- Full-rate network throughout the whole extended distance
- Wall-Mountable design
- Easy plug-and-play installation
- EMI standards complies with FCC, CE class B

Features

Item	Description
No. of channels	1(PoE IN) into 4(PoE OUT)
Pass Through Data Rates	10/100/1000 Mbps half/full duplex
Power over Ethernet input	Pin Assignment and Polarity: Both 1/2 (-), 3/6 (+) and 7/8 (-), 4/5 (+)
Power over Ethernet Output	Pin Assignment and Polarity:1/2 (-), 3/6 (+) Output Power: up to 12W for 4 PSE or 25W for 2 PSE
Indicators	LED indicators are located on the RJ45 connector Power indicator: PoE enabled Powered success:Power Network indicator: Link/Act
Connectors	Shielded RJ-45, EIA 568A and 568B
Network cables	Shielded category 5 (or higher)
Dimensions	119mm x 85mm x 28mm
Mounting	Wall or shelf
Environment	Indoor or Outdoor
Environmental Conditions	Operating Ambient Temperature:-10 to 45 °C Operating Humidity: Maximum 90%, Non-condensing Storage Temperature:-4 0 to 7 0 °C Storage Humidity: Maximum 95%, Non-condensing
Regulatory Compliance	IEEE 802.3af (15.4W) IEEE 802.3at (30W) IEEE802.3at 4Pairs(60W)

Application



Maximum Distances for Power Sources

Multiple PoE Extenders can be connected every 100 meters to obtain greater distances. The actual figures depend on operating conditions. The range is over 24 AWG or heavier Cat-5e or Cat-6 cable except where specified.

Examples for medium power PoE Devices (that are PoE Class 2, or require under 6 watts)

PoE Source	
PoE+ switch (802.3at, Output voltages 50V)	60W mid-span (802.3at, Output voltages 54V)
Maximum Distances	
200m	300m(With Gigabit POE Extender)