



Quick Guide

# Kosmos on Android™ and iOS

# Kosmos on Android

## Home screen

- 1 AI-Assisted EF Workflow\*
- 2 Imaging  
(Heart, Lung, and Abdomen)
- 3 Patients, Exams, Settings and  
Tutorial Videos

Features vary between Android and iOS software. Please contact your EchoNous representative for more information regarding your software.



App: **Echonous Kosmos: Ultrasound App**  
Echonous, Inc.



Download EchoNous Kosmos: Ultrasound App from the Google Play Store.

Launch the App, connect a compatible probe and you are ready to scan.

# Kosmos on Android: Imaging



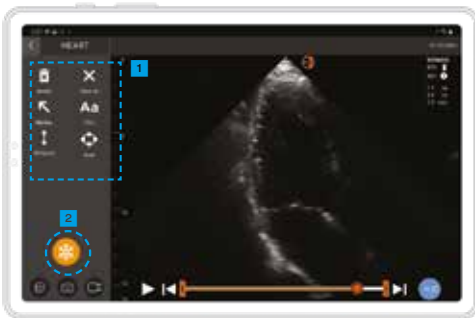
## B-Mode

- 1 B+CD-Mode
- 2 Freeze
- 3 B+M-Mode
- 4 PW Mode
- 5 TDI Mode
- 6 CW Mode



## B+CD-Mode

- 1 Color Box  
*Move and resize the box by dragging*
- 2 Select Color Map
- 3 Turn off Color Doppler



## Freeze

- 1 Annotations
- 2 Unfreeze



## B+M-Mode

- 1 Turn off M-Mode
- 2 M-line  
*Drag to move*

# Kosmos on Android: PW Mode, CW Mode and TDI Mode

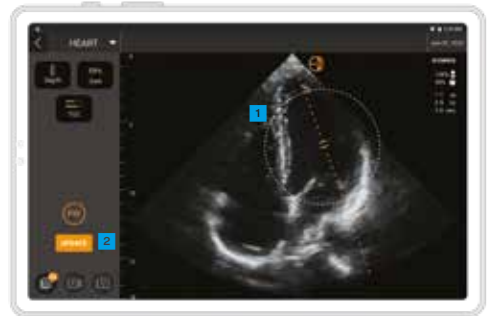


## B-Mode

- A PW Mode
- B TDI Mode
- C CW Mode

Both PW and CW modes are available with or without Color mode.

Adjust the volume to hear PW and CW signals.



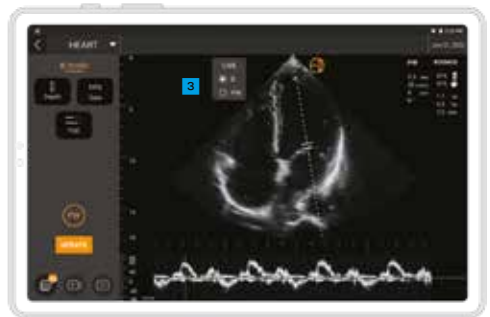
## Placing sample gate

- 1 Move the circle to place the gate in the desired location
- 2 Tap Update



## Doppler Live vs B-Mode Live

- 1 Indicator and toggle button to go between B-mode live and Doppler live
- 2 Drag up or down to move the baseline



- 3 B-mode live screen

# Kosmos on Android: AI

## Kosmos Trio\*\*

Within the AI-assisted EF workflow you can activate the Trio to get assistance acquiring the A4C and A2C views required for the EF calculation.



### A Trio

Tap Trio button to turn on/off the AI features.

- 1 Auto-Guidance
- 2 Auto-Grading
- 3 Auto-Labeling
- 4 Auto-Capture

## Kosmos AI FAST\*\*

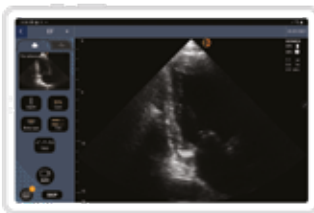
AI FAST provides automated anatomical labeling and view identification for the FAST exam in real time.



### 1 AI FAST

## Kosmos AI-assisted EF Workflow\*

The EF workflow guides you to acquire A4C/ A2C clips and auto-calculate Ejection Fraction and Stroke Volume. Turning On Trio features is optional.



### Acquire

- 1 Obtain a good A4C view and tap A4C to acquire a clip.

Next acquire A2C clip (recommended) or skip.



### Results

- 2 See results.



### Edit and Review

- 3 Select a different ED/ES frames.
- 4 Adjust the LV contour.

# Kosmos on iOS

## Driverkit installation steps:

- 1 Go to iPad Settings and update to iPadOS 16. Settings --> General --> Software Updates
- 2 Download "EchoNouS Kosmos: Ultrasound App" from the Apple App Store
- 3 Once downloaded, open the Kosmos App and tap "Click here to enable driver". You will be routed to your iPad's settings. Swipe to enable the Echonus Probe Driver.
- 4 Go back to the Kosmos App and connect the Kosmos probe.



App: Echonus Kosmos: Ultrasound App  
Echonus, Inc.

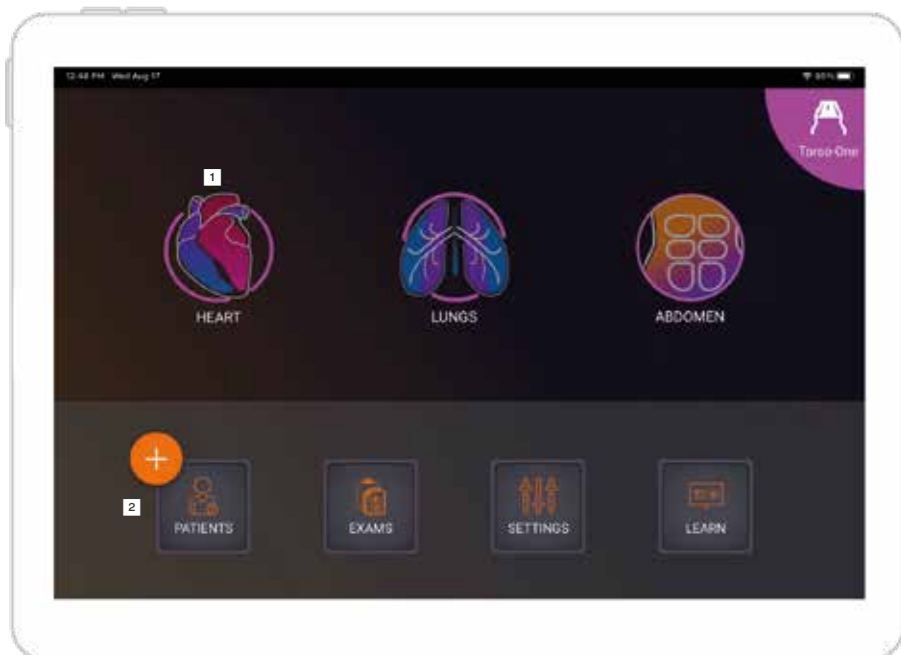


Download EchoNouS Kosmos: Ultrasound App from the Apple App Store.

Launch the App, connect a compatible probe and you are ready to scan.

## Home screen

- 1 Imaging  
(Heart, Lung, and Abdomen)
- 2 Patients, Exams, Settings  
and Tutorial Videos



# Kosmos on iOS: Imaging



## B-Mode

- A** B+CD-Mode
- B** B+M-Mode
- C** Freeze



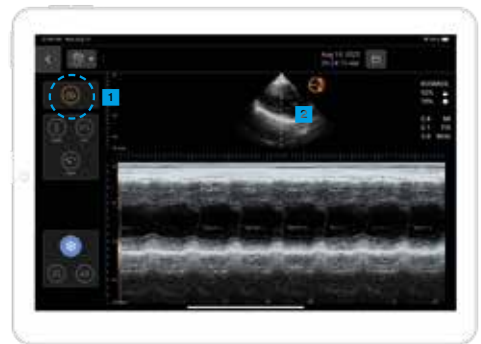
## B+CD-Mode

- 1** Color Box  
*Move and resize the box by dragging*
- 2** Select Color Map
- 3** Turn off Color Doppler



## Freeze

- 1** Annotation
- 2** Unfreeze



## B+M-Mode

- 1** Turn off M-Mode
- 2** M-line  
*Drag to move*

# Contact

## Customer Support

Call 1-844-854-0800  
Email [support@echonous.com](mailto:support@echonous.com)

KOSMOS® is intended to be used by qualified and trained healthcare professionals in the clinical assessment of the cardiac and pulmonary systems and the abdomen by acquiring, processing, displaying, measuring, and storing ultrasound images.

**⚠ Caution:** Federal (United States) law restricts this device to sale by or on the order of a physician.

**Note:** Not all features are available in all markets. Please check with your local representative for availability in your region.

A Product of



**For US only** \*Kosmos Trio is a real-time automatic image labeling, grading and guidance system to enable the collection of images by healthcare practitioners. The AI-assisted EF Workflow uses AI to perform initial EF calculations by healthcare practitioners. Kosmos AI FAST uses an AI algorithm to detect and display real-time labeling of anatomical structures. Kosmos Trio, AI-assisted EF Workflow, and Kosmos AI FAST are intended to be used by qualified healthcare professionals or under the supervision or in-person guidance of a trained or licensed healthcare professional. Kosmos Trio, AI-assisted EF Workflow and Kosmos AI FAST address urgent image analysis needs during the declared COVID-19 public health emergency. Kosmos Trio, AI-assisted EF Workflow and Kosmos AI FAST have not been cleared by the FDA.

**For Canada only** \*Kosmos Trio is not available. AI FAST is not available for Canada.

**For European Union only** \*Kosmos Trio is approved for educational and training purposes only and is not approved for clinical use. AI FAST is not available for EU.