

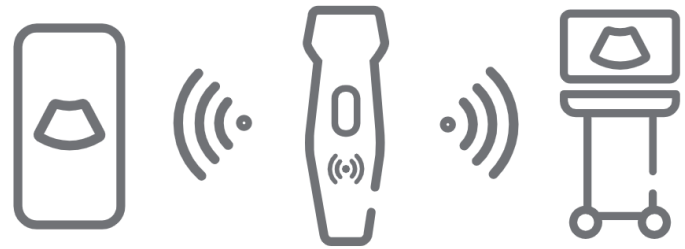
# TE Air

## Wireless Handheld Ultrasound



## TE Air Connectivity

The TE Air can be used as a standalone system with the TE Air Mobile App or as a wireless transducer with the TE X Ultrasound System. The new wireless transducer enables providers to overcome the limitations of cords and tight spaces while offering premium scanning functionality.



### Confident Performance with Every Scan

- Scanning modes: B-mode, M-mode, Color Doppler, Power Doppler, PW, and Tissue Doppler Imaging
- Dedicated presets for Cardiac, Abdomen, Lung, Transcranial Imaging (TCI), Emergency Medicine (EM), Trauma (FAST), EM Abdominal Aortic Aneurysm (AAA), Bladder, OB/GYN, and Vascular

# Innovation Untethered

Point of Care Ultrasound (POCUS) has been established as an essential imaging technique for examining patients at the bedside in fast-paced environments such as Emergency Rooms, Critical Care, and Emergency Medical Evacuation. As clinical utility expands, the demand for high-quality portable ultrasound devices increases.

As the industry's first wireless transducer that connects to a fully-featured Ultrasound system, the TE Air can be used with the TE X Ultrasound System or independently with a mobile device. This versatility helps improve clinicians' confidence and efficiency at the bedside or on the go outside the hospital setting.



# Extreme Usability

## Innovative Air Capsule

- Protective case and a portable charger in one
- Supports wireless recharge of the TE Air up to three times for all-day use

## Limit Your Downtime

- The TE Air has a fast charge capability to ensure the device is ready when you are
- Supports over 60 mins of scanning time



## Cleaning and Disinfection

- IP68 level waterproof and dustproof design
- Able to withstand complete immersion with compatible disinfectants

## Magnetic Charging Cable

- Helps prevent accidental damage and cable fatigue

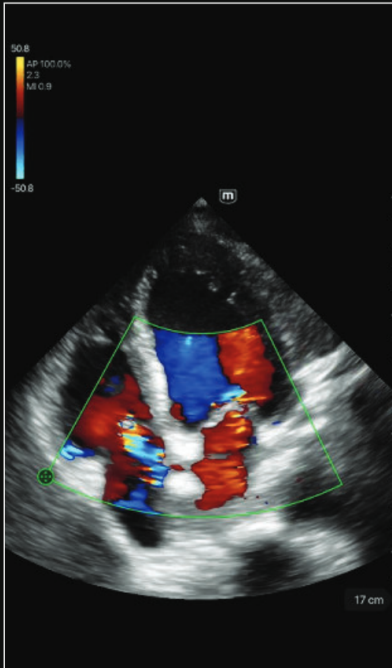
# The New TE Air Mobile App

- Intuitive user interface supports one-hand operation and ease-of-use
- On-board patient data management solutions provide connected patient care
- Seamless connectivity with PACS to complement the department's workflow

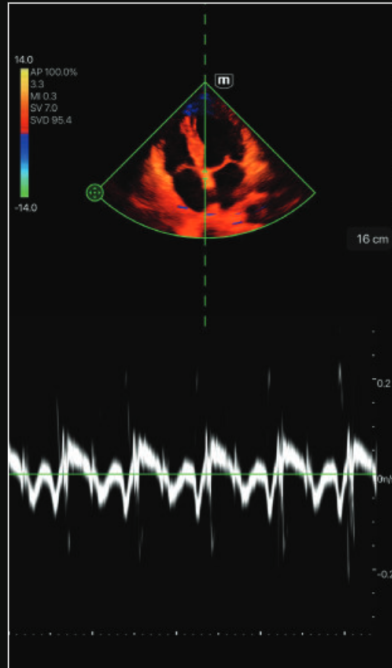


# Clinical Gallery

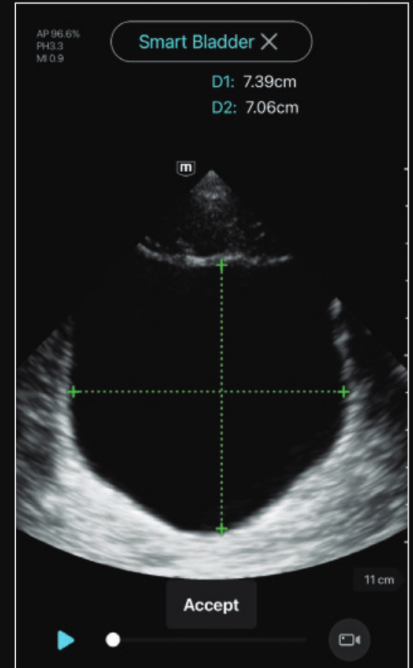
Powered by eWave and single crystal technology, the TE Air delivers high-quality images with excellent resolution, enabling clinicians to make confident decisions at the bedside.



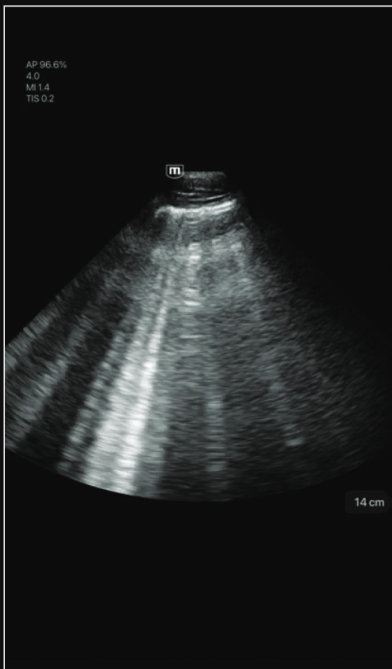
**Mitral and Tricuspid  
Regurgitation**



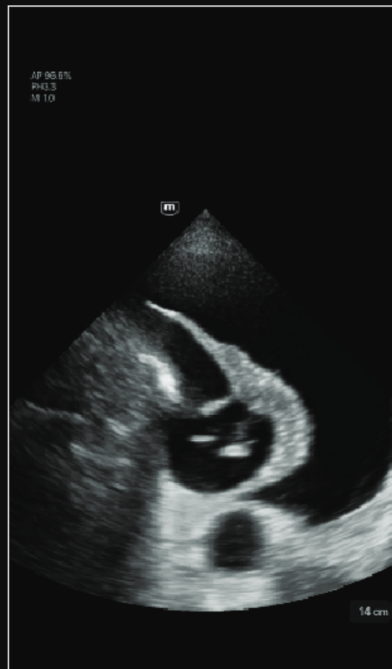
**Tissue Doppler**



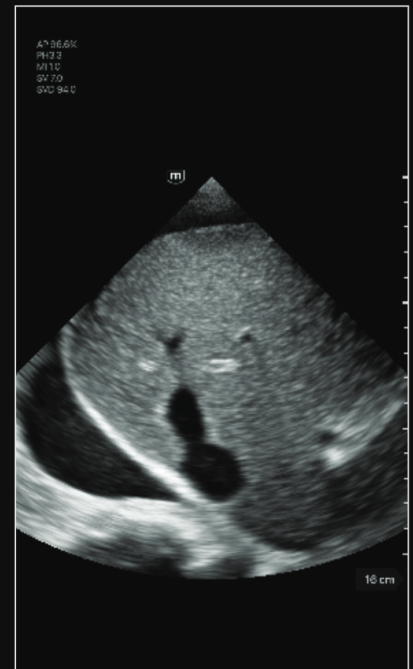
**Smart Bladder**



**B-Lines**



**Pleural Effusion**



**Ascites**

# Peace of Mind Protection

## Living Technology

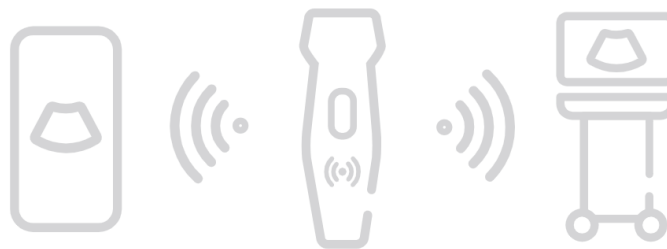
Living Technology™ is a continually evolving software-based approach to providing our customers with easily upgradeable enhancements made possible by our core imaging technologies. These upgrades secure product investment protection by ensuring that Mindray Ultrasound Systems remain at the cutting-edge of imaging performance throughout their entire life cycle.

## Standard warranty\* includes:

### Three years of coverage for:

- Main system and parts, and technical phone support Monday-Friday, 8 am–8 pm ET (excluding U.S. holidays)
- Standard transducers (normal wear and failure)
- Software performance updates with Living Technology

\* Standard three (3) year warranty is available for systems purchased directly from Mindray North America. Warranties for systems purchased from Mindray authorized agents can vary.



### Mindray North America

800 MacArthur Blvd., Mahwah, NJ 07430

Tel: 800.288.2121 Support: 877.913.9663 Fax: 800.926.4275 [www.mindray.com](http://www.mindray.com)

Mindray® is a registered trademark of Shenzhen Mindray Bio-Medical Electronics Co., Ltd. All brands and product names are trademarks of their respective owners. ©2022 Mindray DS USA, Inc. Subject to change. 10/22 P/N: 0002-08-40633 Rev A

# mindray

healthcare within reach