



**PHILIPS**

Ultrasound

Lumify

The ultrasound you trust.  
The advances that matter.

**Philips Lumify ultrasound on Android**

# Exceptional ultrasound imaging

Lumify handheld ultrasound offers images that enhance diagnostic confidence, along with superb reliability and high-quality, lightweight transducers that stay cool even with extended scanning.

**The  
choice  
is yours**

Lumify is now compatible  
with more than  
40 different devices.

## **Your data, your way**

With Lumify, your data and images stay with you and are stored however you choose. Lumify is HIPAA-compliant and is in use in hospitals worldwide.



# Fast diagnosis and treatment

Our app-based ultrasound makes it easy to get started – three simple steps, and you're ready to go.

1



## Download

the Lumify app to your compatible smart device.\*

2



## Connect

the Lumify transducer to your smart device.

3



## Scan

with the exceptional quality of Philips imaging technology.

## Meet today's point-of-care imaging challenges

# Let nothing get in the way of clinical performance

Crystal-clear diagnostic insights depend on high-resolution imaging performance across shallow and deeper applications.

That's the exceptional imaging performance you can expect from Philips handheld ultrasound.

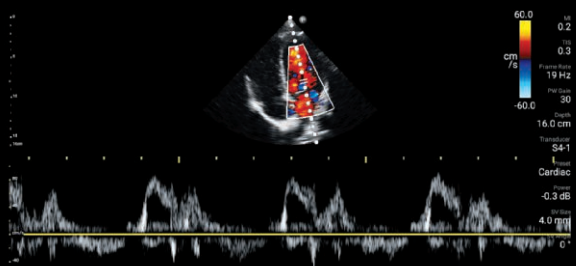
\* See the Lumify website for the list of compatible smart device options: [philips.com/lumify-compatible-devices](https://philips.com/lumify-compatible-devices).



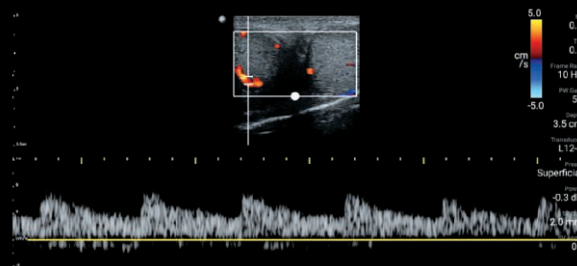
# Pulse Wave Doppler for confident hemodynamic assessment

Lumify now offers Pulse Wave Doppler\* across all clinical exams, available on all transducers for accurate quantitative analysis.

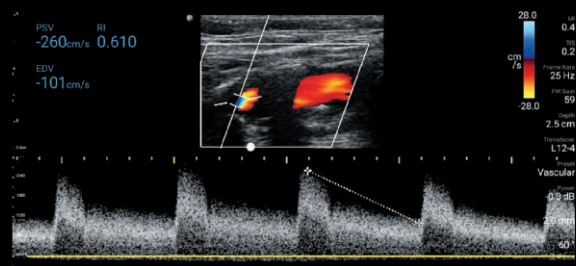
Provides comprehensive Pulse Wave Doppler measurements, iSCAN optimization and auto-linked color Doppler steering.



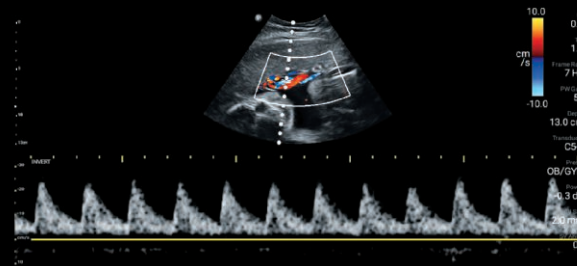
S4-1 cardiac Doppler



L12-4 testicular flow Doppler



L12-4 internal carotid artery color flow Doppler



C5-2 fetal cord Doppler

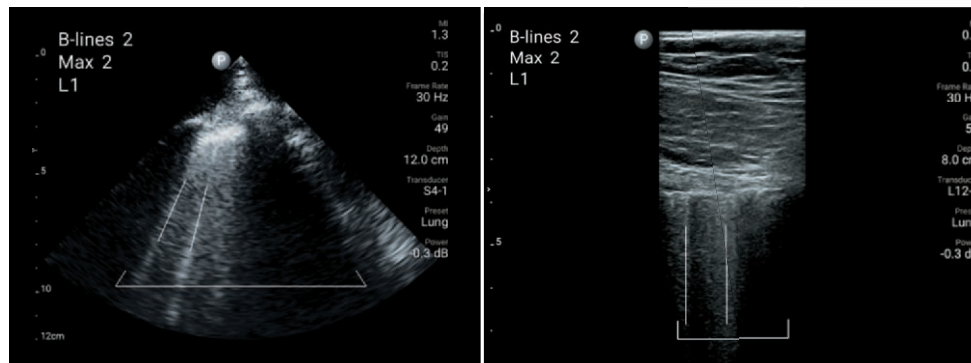
## Assess early fetal age

Tools for fetal age measurement in early gestation include crown-rump length (CRL) and mean sac diameter (MSD).\*\*



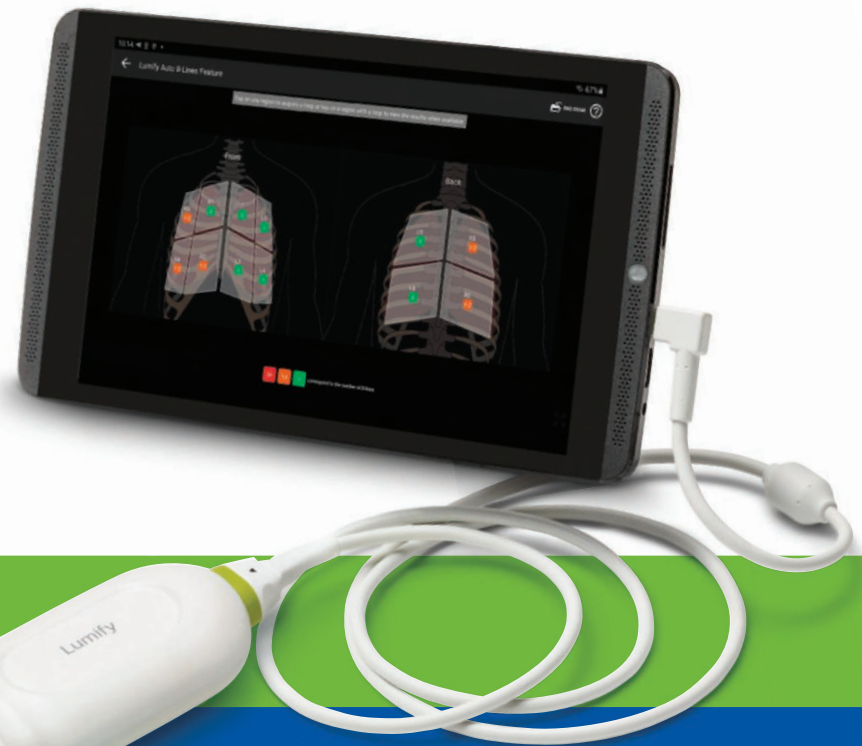
# Guided B-line quantification\* for high-quality, reliable insights in lung ultrasound

The ability to consistently and accurately identify and track the presence and severity of B-lines is vital to the treatment of critically ill patients with lung conditions. Guided B-line quantification – unique to Lumify in handheld ultrasound – delivers reproducible, reliable results that enhance your confidence when making clinical decisions.



B-line image with S4-1 transducer

B-line image with L12-4 transducer



## Reducing infection exposure

Reduce infection risk to patients and staff by covering your Lumify device with a standard transducer sleeve. Disinfect the device quickly and easily using popular low- and intermediate-level wipes.

# Decades of imaging expertise. Quality you can trust.

Lumify combines flexibility, simplicity and quality for point-of-care practitioners to support informed decisions.



Lumify  
C5-2  
broadband  
curved array  
transducer

Abdominal with lung and gallbladder  
presets and Ob/Gyn capabilities



Lumify  
L12-4  
broadband  
linear array  
transducer

Variety of clinical applications, including soft tissue,  
musculoskeletal, lung and vascular scanning



Lumify  
S4-1  
broadband  
phased array  
transducer

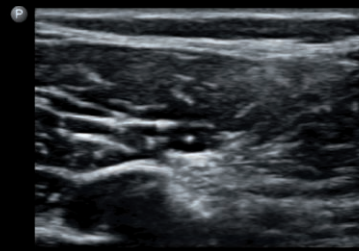
Presets for cardiac, abdominal  
with lung, Ob/Gyn and FAST exams



# Incredible clarity across all imaging modes



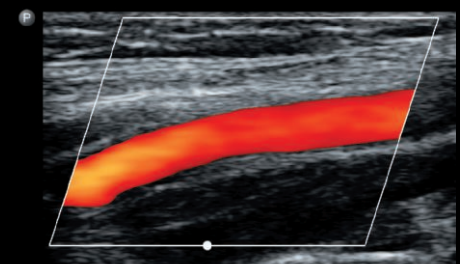
C5-2 umbilical cord with color



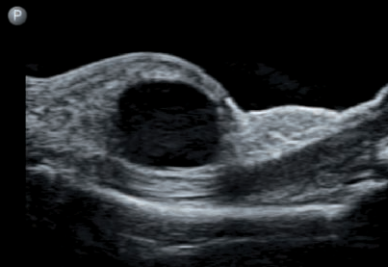
L12-4 sciatic nerve in popliteal space



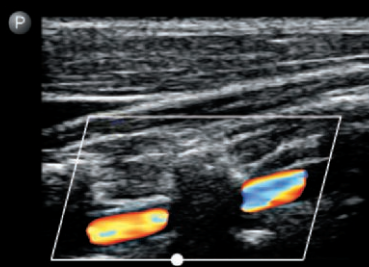
C5-2 liver and kidney



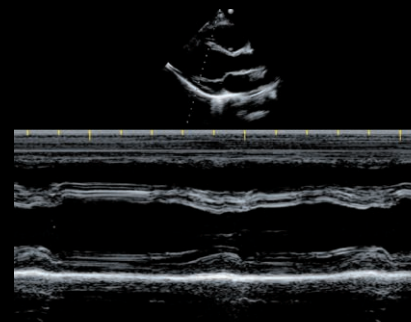
L12-4 internal carotid artery with color



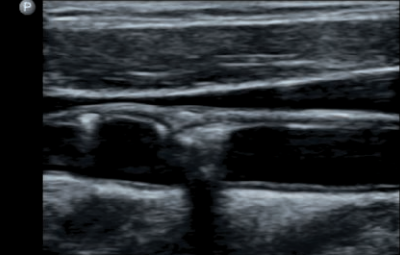
L12-4 soft tissue with cyst



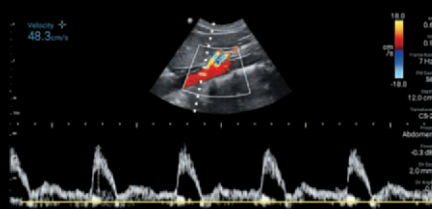
L12-4 vertebral artery with color



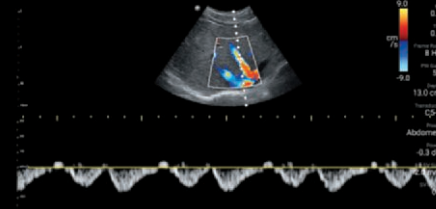
S4-1 cardiac with M-mode



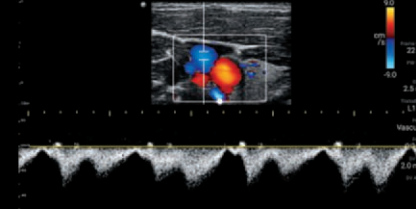
L12-4 common carotid artery with plaque



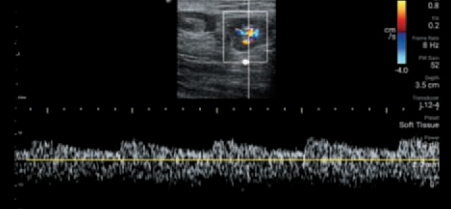
C5-2 aorta with color and Pulse Wave



C5-2 hepatic vein with color and Pulse Wave



L12-4 jugular vein with color and Pulse Wave



L12-4 lymph node with color and Pulse Wave

# Integrated tele-ultrasound.\* Because the world moves in real time.

The Philips Lumify integrated tele-ultrasound powered by the Reacts collaborative platform brings health professionals together with real-time video and audio calls, live ultrasound streaming and virtual guidance.

## Accessible pricing

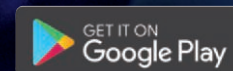
Because Lumify works on compatible Android devices, it relieves you of the burden of paying for a custom ultrasound machine.

When you purchase Lumify, you'll receive everything you'll need to get started.

- A Philips Lumify transducer
- Lumify ultrasound app
- Ongoing software upgrades
- Manufacturer's warranty on the hardware
- Access to Philips service and education

Call **1-844-MYLUMIFY**  
or visit **philips.com/lumify**

\* Reacts in Lumify is available on Android only.  
For a full list of compatible devices go to  
[philips.com/lumify-compatible-devices](https://philips.com/lumify-compatible-devices).







© 2021 Koninklijke Philips N.V. All rights are reserved.  
Philips reserves the right to make changes in specifications  
and/or to discontinue any product at any time without notice  
or obligation and will not be liable for any consequences resulting  
from the use of this publication. Trademarks are the property  
of Koninklijke Philips N.V. or their respective owners.

[www.philips.com](http://www.philips.com)

Printed in the Netherlands.  
4522 991 74061 \* DEC 2021