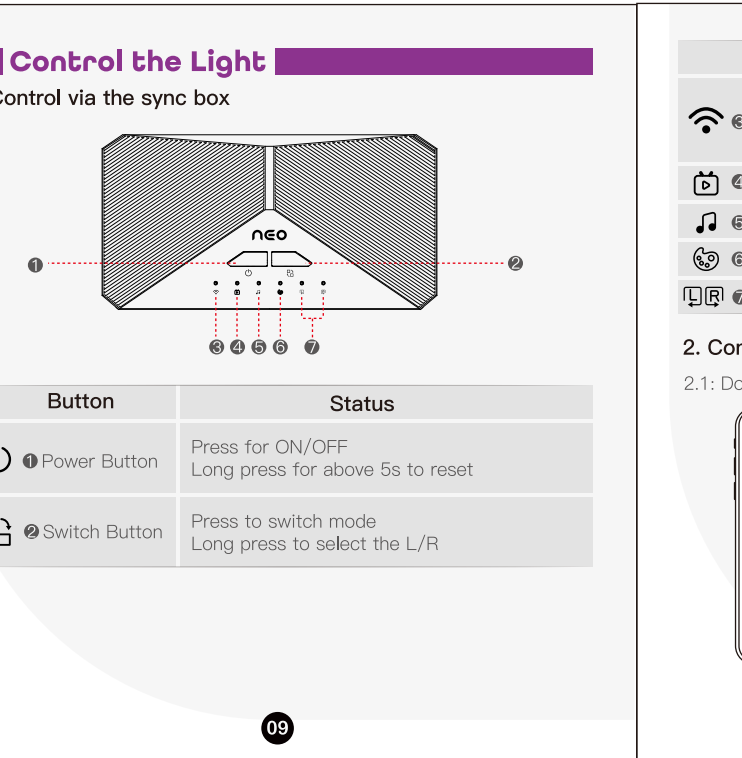
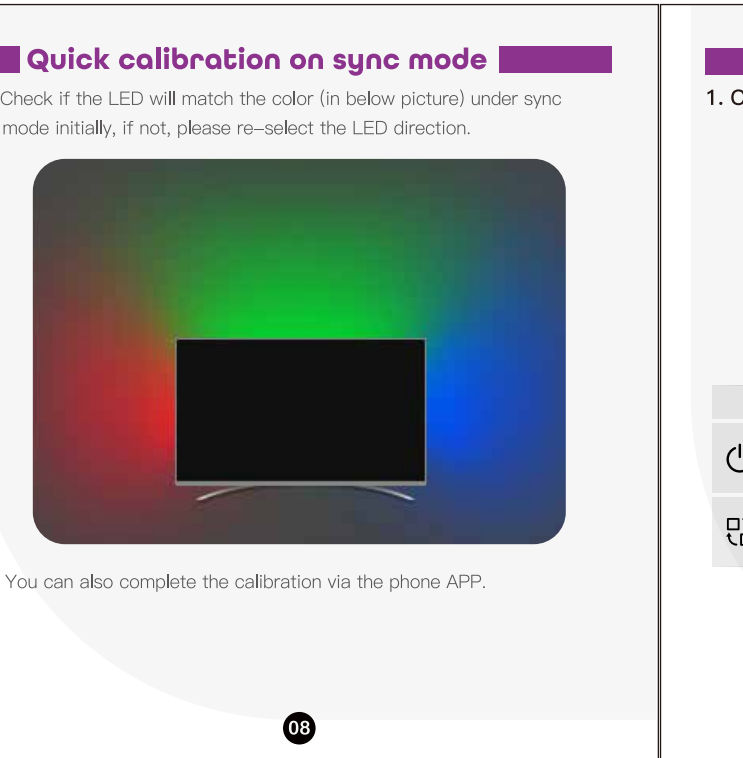
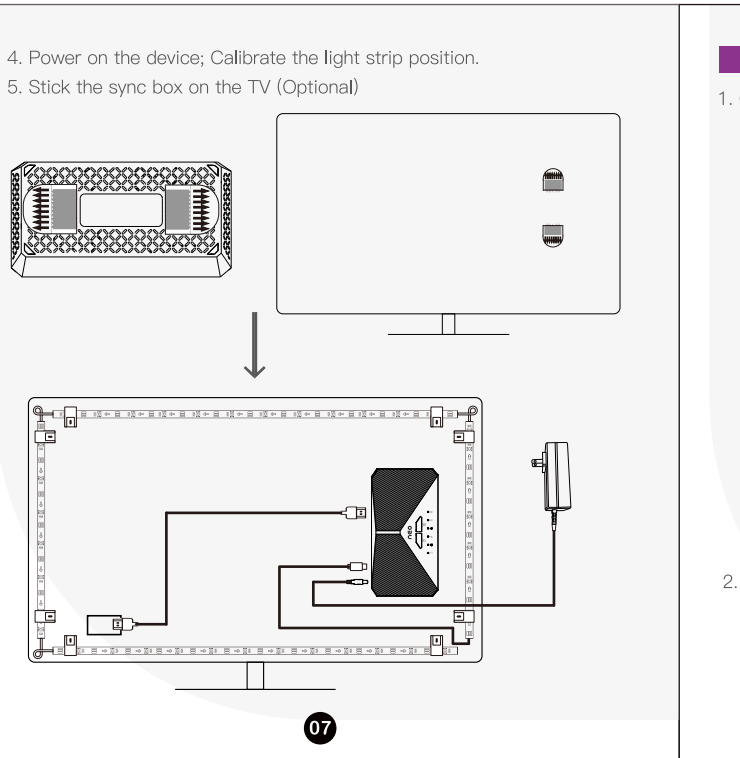
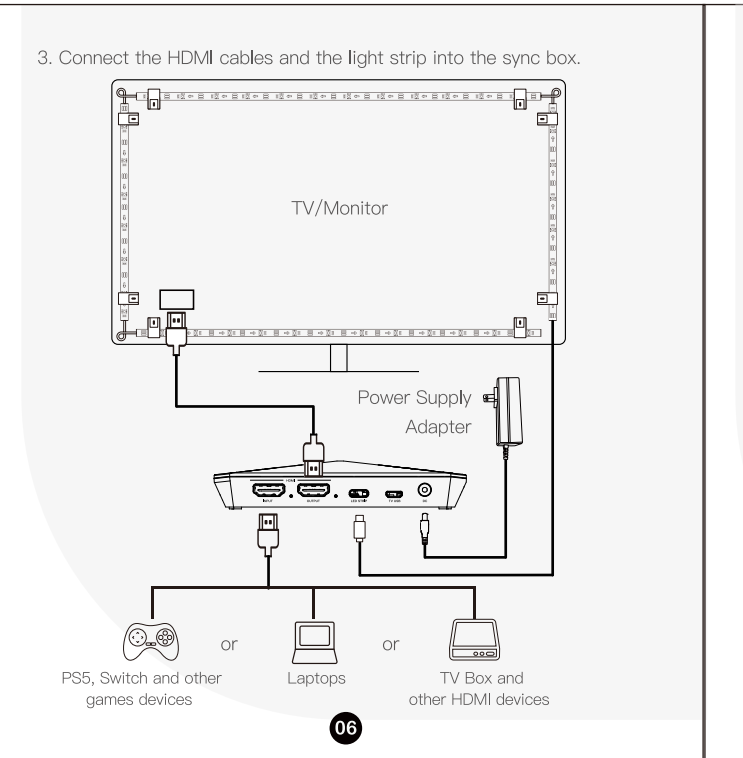
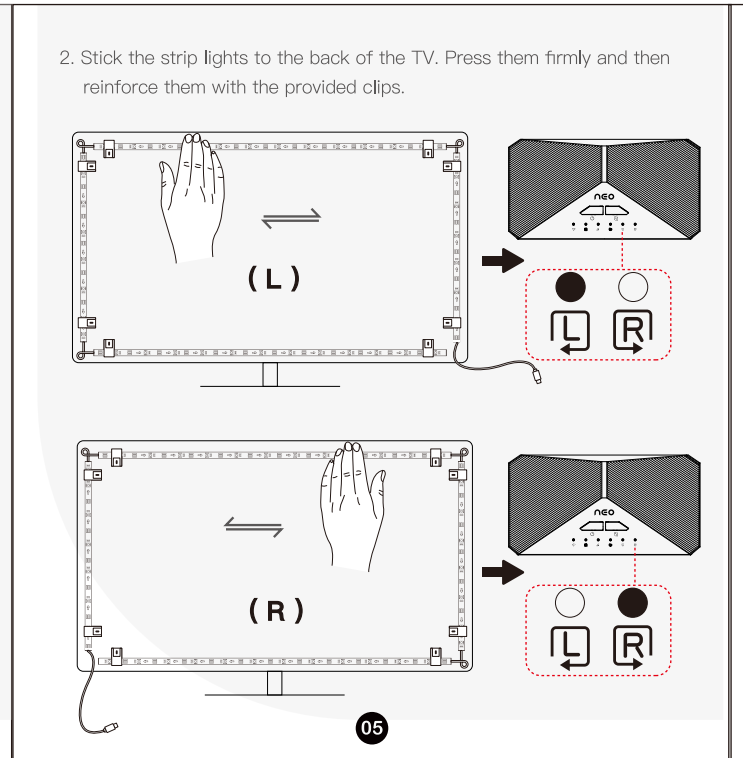
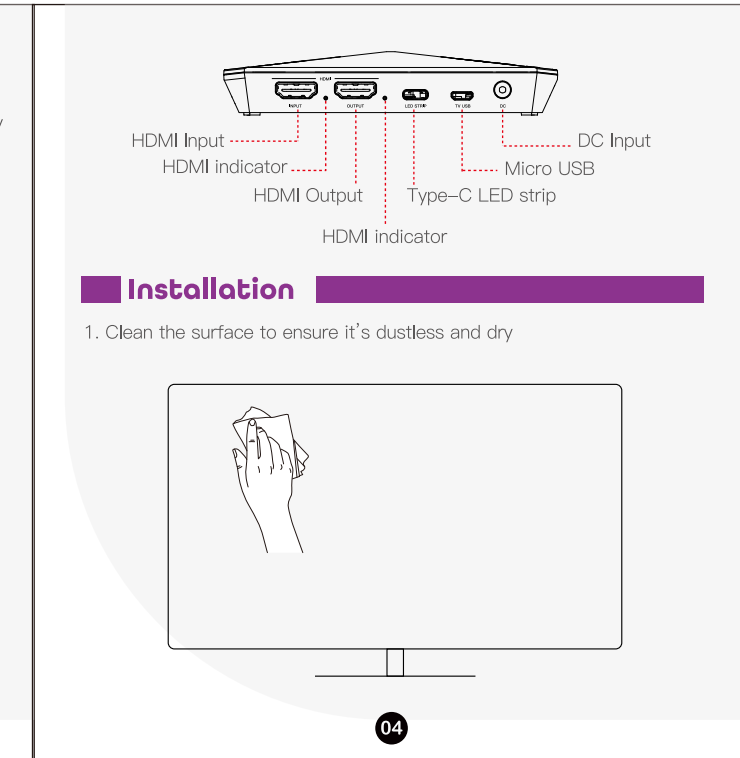
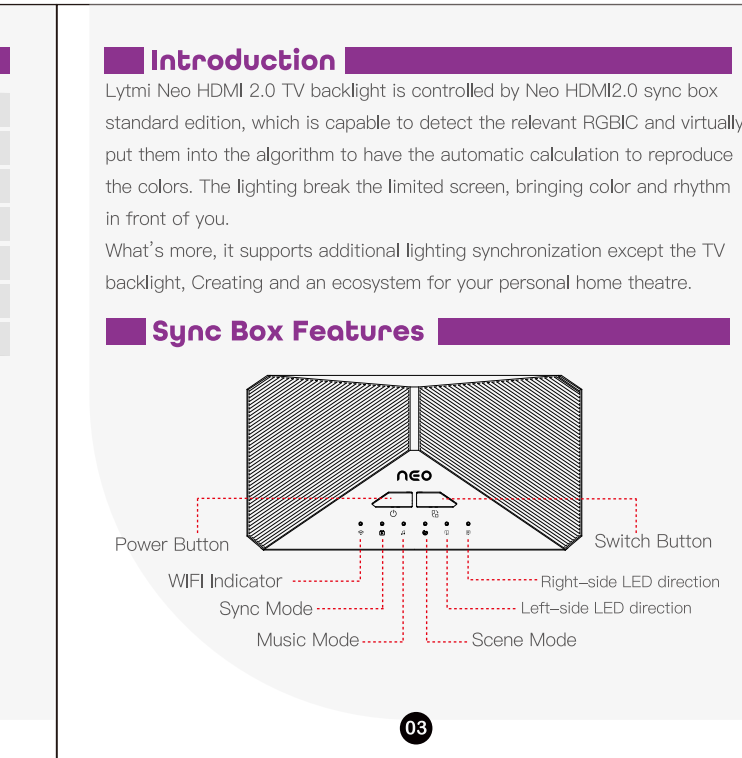


User Manual
Lyumi Neo HDMI 2.0 TV Kit
Standard Version
LD021

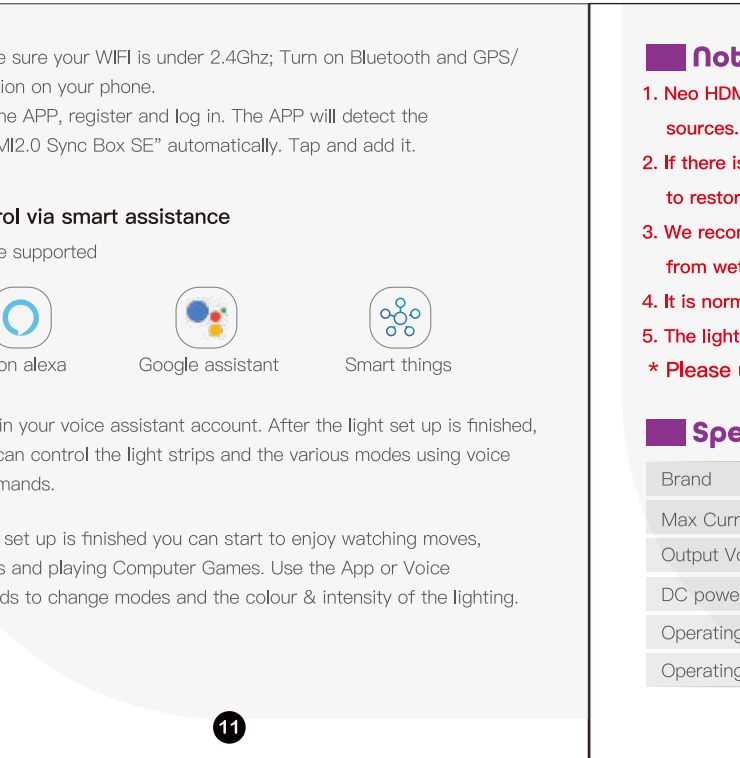
Table with 2 columns: Language and Page number. Includes English (P01-P14), Deutsch (P15-P28), Français (P29-P42), Italiano (P43-P56), Español (P57-P70).

Contents
What's in the box? P02
Introduction P03
Sync Box Features P03-P04
Installation P04-P07
Quick calibration on sync mode P08
Control the Light P08-P11
Notice P12
Specification P12
Troubleshooting P13
Customer Service P14

What's in the box?
Neo HDMI 2.0 sync box standard edition 1
HDMI 2.0 Cable 1
Video for the sync box 2
AC Power Adapter 1
Light Strip 1
HDMI Indicator 1
HDMI cable 10
User Manual 1



Indicator Status
WiFi Indicator: Ready for WiFi connection
Sync Mode: Indicator on Under Sync Mode
LED Side LED: LED Installation direction



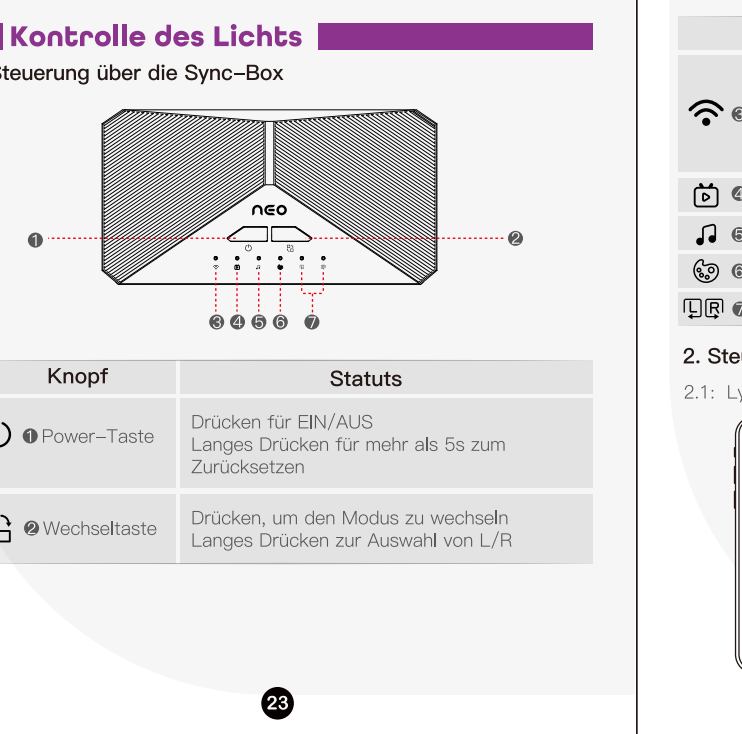
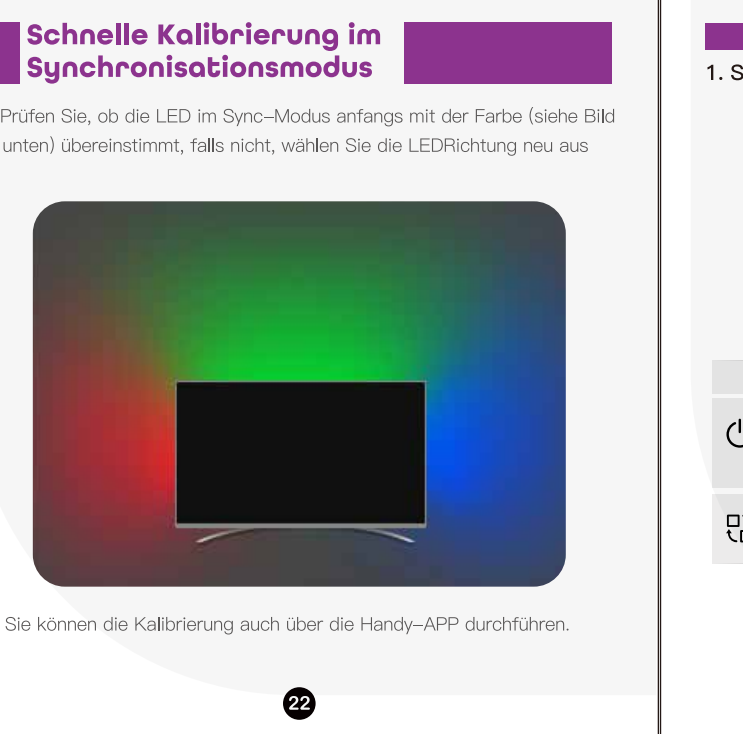
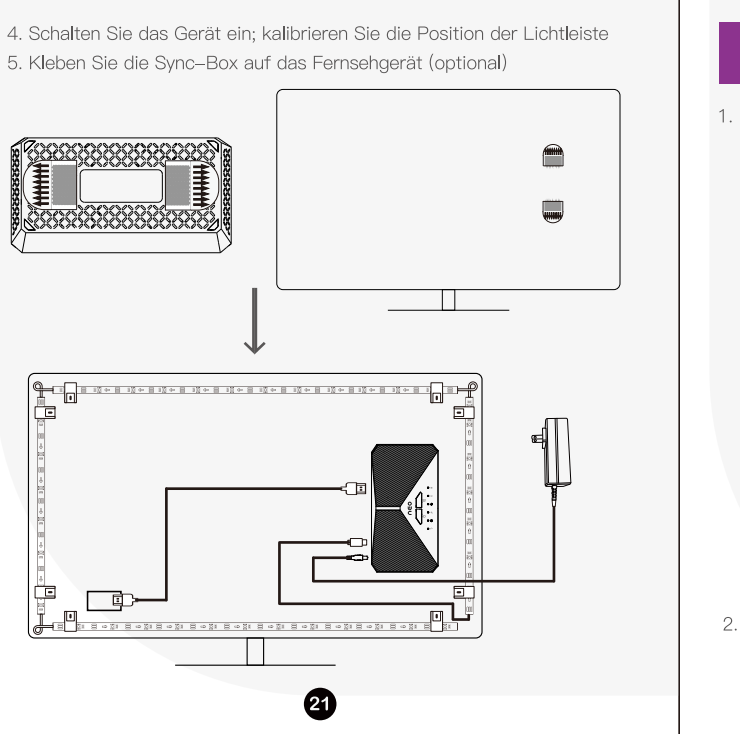
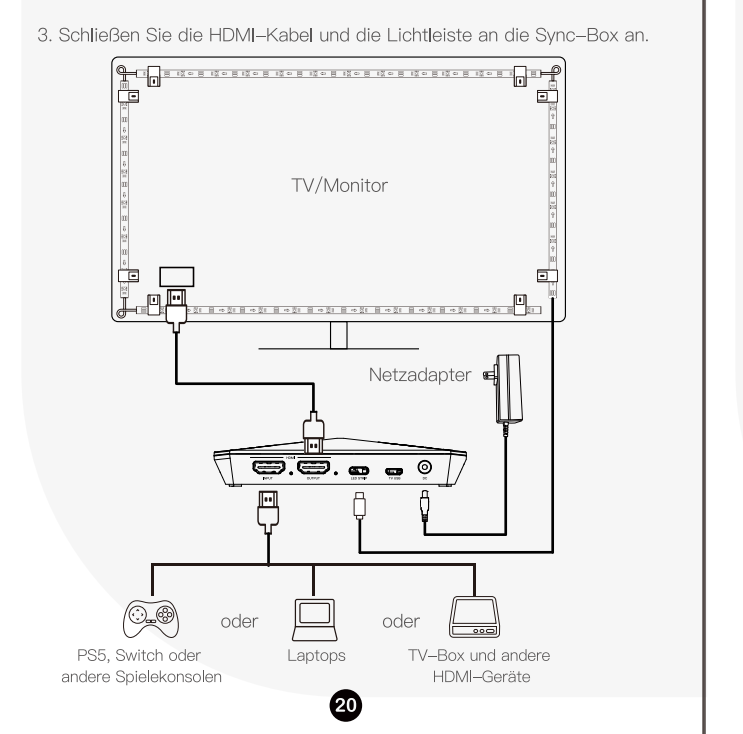
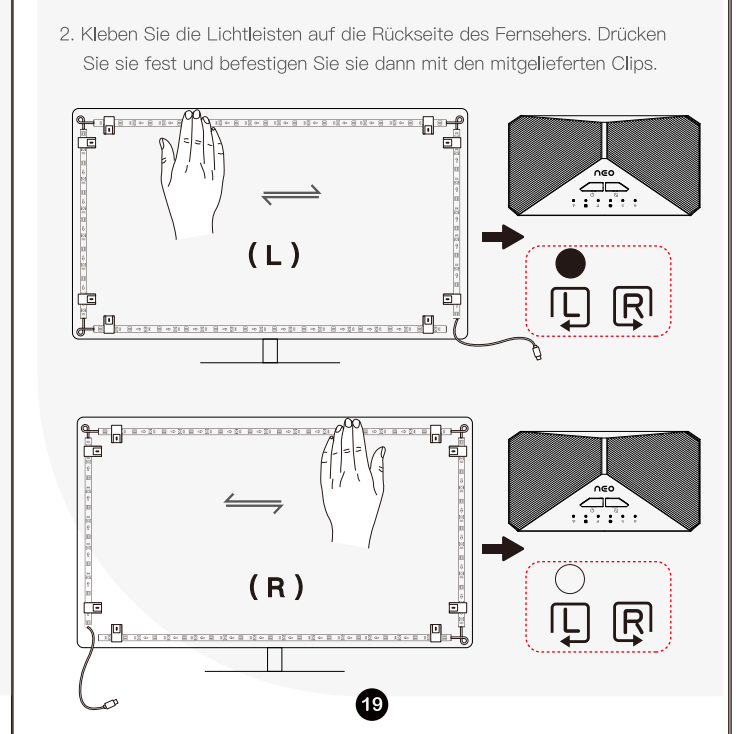
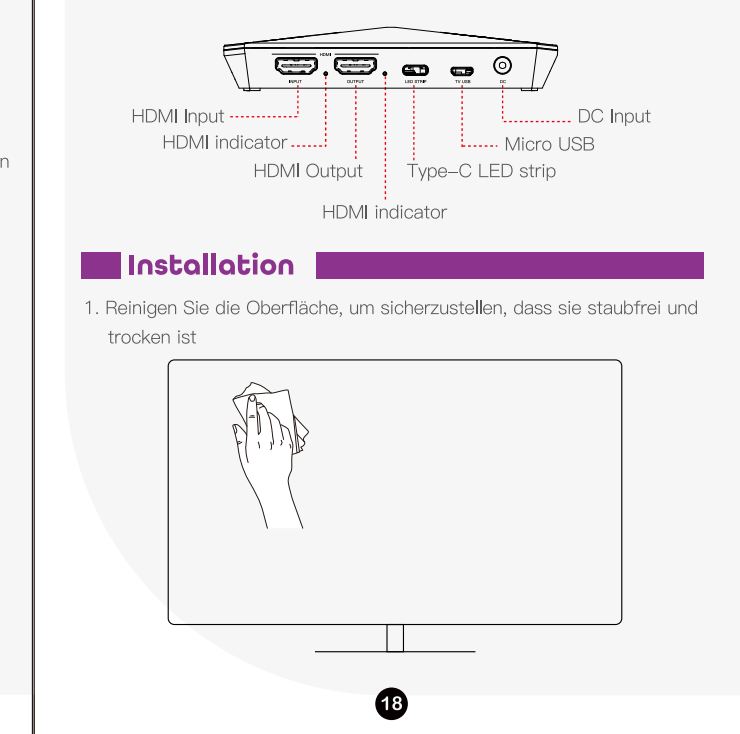
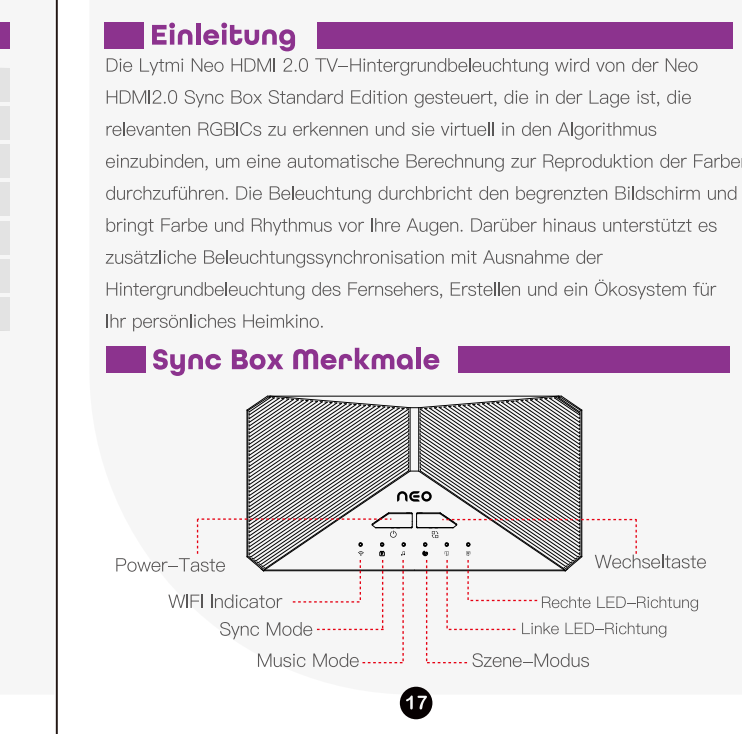
Notice
1. Neo HDMI 2.0 sync box standard edition supports up to 4K/60FPS.
2. There is any problem or failure in connection you can not Neo to restore to factory settings and start over.

Troubleshooting
1. Cannot use sync mode
2. Cannot connect with the APP
3. The light strip cannot light up

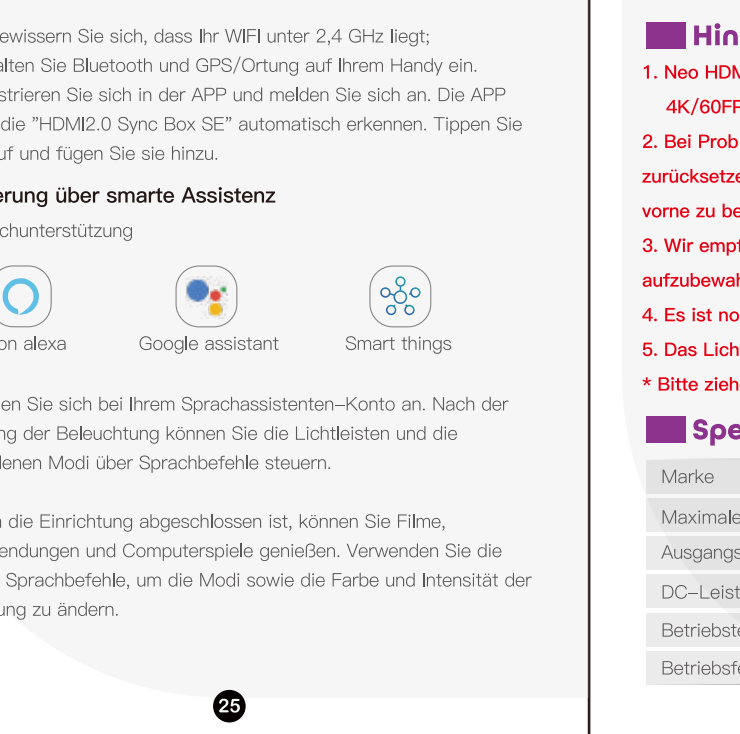
Customer Service
1. Warranty: 12-Month Limited Warranty
2. Support: Lifetime Technical Support
3. Official website: www.lymi.com

Benutzer Handbuch Inhalt
Was ist in der Box? P16
Einführung P17
Sync Box Merkmale P17-P18
Installation P18-P21
Schnelle Kalibrierung im Synchronisationsmodus P22
Kontrolle des Lichts P23-P25
Spezifikation P26
Fehlersuche P27-P28
Kundendienst P28

Was ist in der Box?
Neo HDMI 2.0 sync box standard edition 1
HDMI 2.0 Kabel 1
Kleberstreifen für die Sync-Box 2
AC-Netzadapter 1
Light Strip 1
Befehlskarten für Lightstrip 10
Benutzerhandbuch 1



Indicator Status
WiFi Indicator: Bereit für WiFi-Verbindung
Sync Mode: Indikator aktiviert - Synchronisationsmodus
LED-Seiten-LED: LED-Installationsrichtung



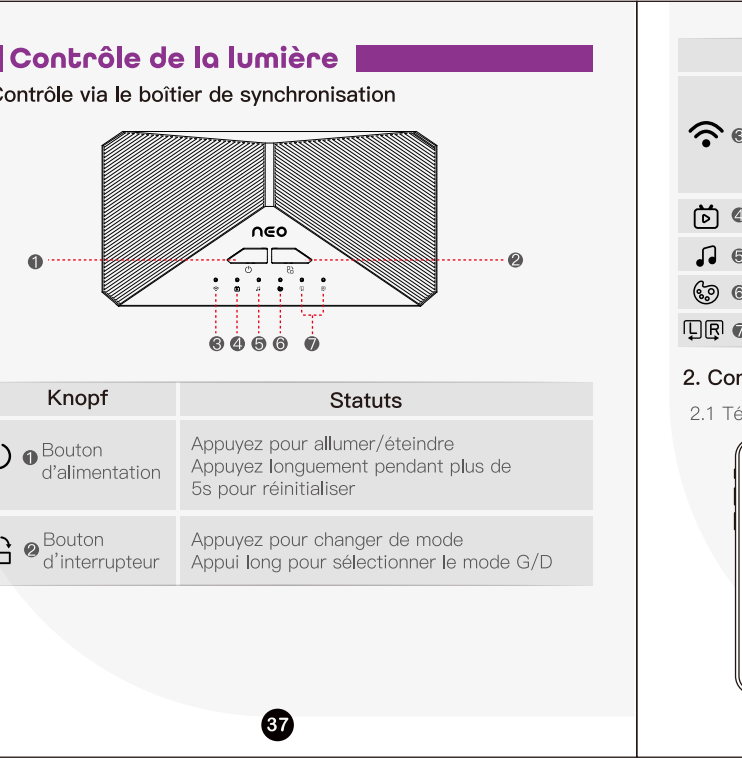
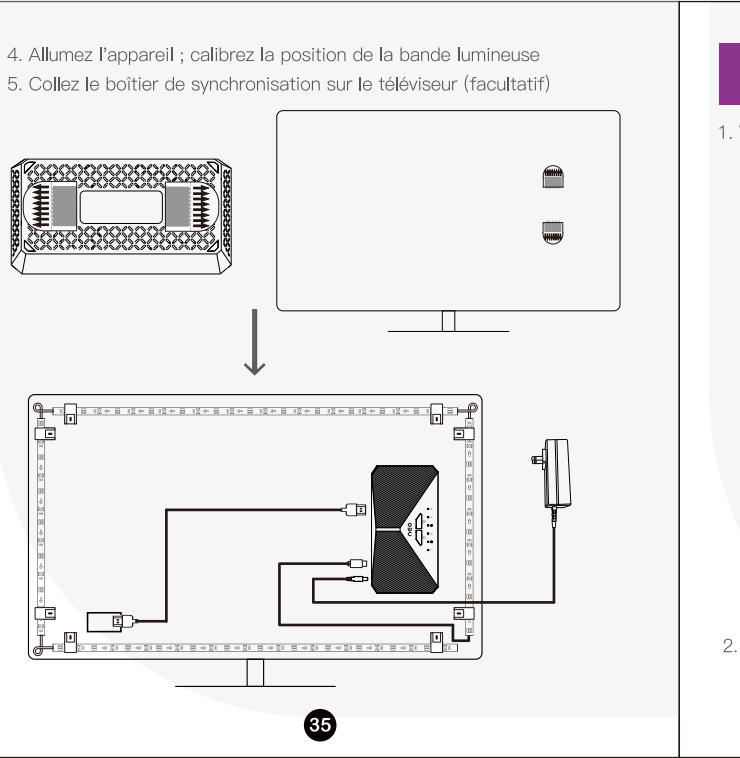
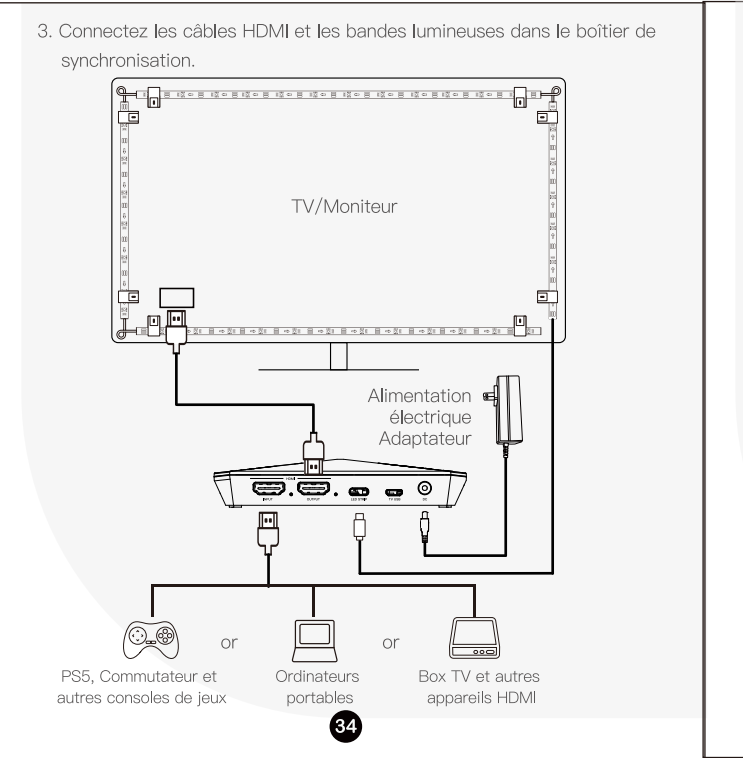
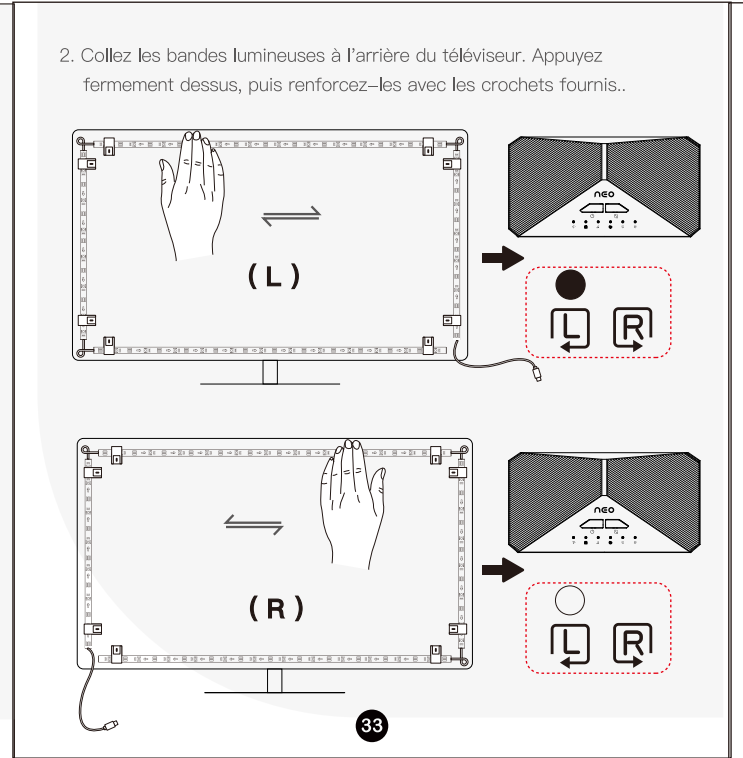
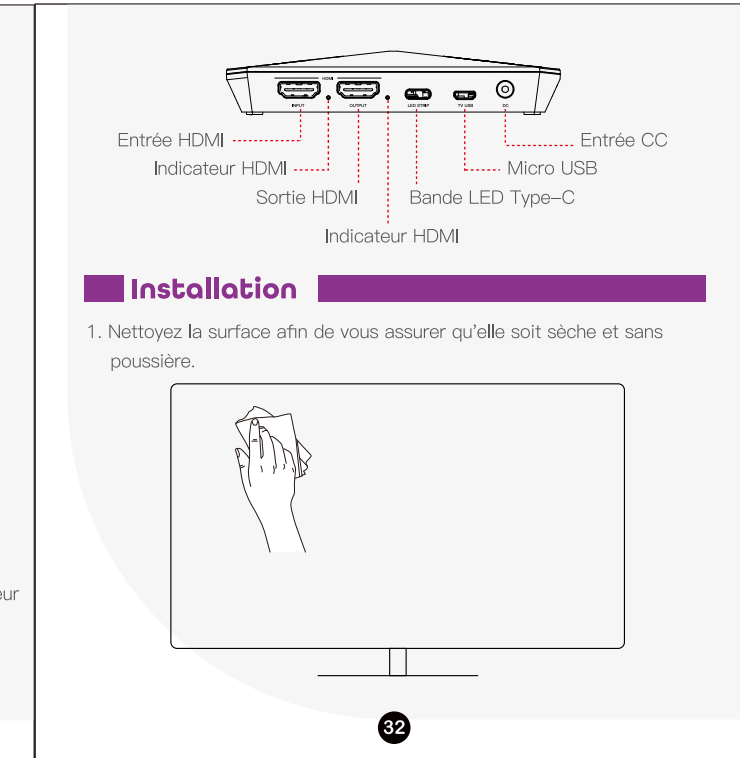
Hinweise
1. Neo HDMI 2.0 Sync-Box Standard Edition unterstützt bis zu 4K/60FPS.
2. Bei Problemen oder Fehlern in der Verbindung können Sie Neo zurücksetzen, um die Werkseinstellungen wiederherzustellen und von vorne zu beginnen.

Fehlersuche
1. Sync-Modus kann nicht verwendet werden
2. Keine Verbindung mit der APP möglich
3. Das Lichtband leuchtet nicht auf

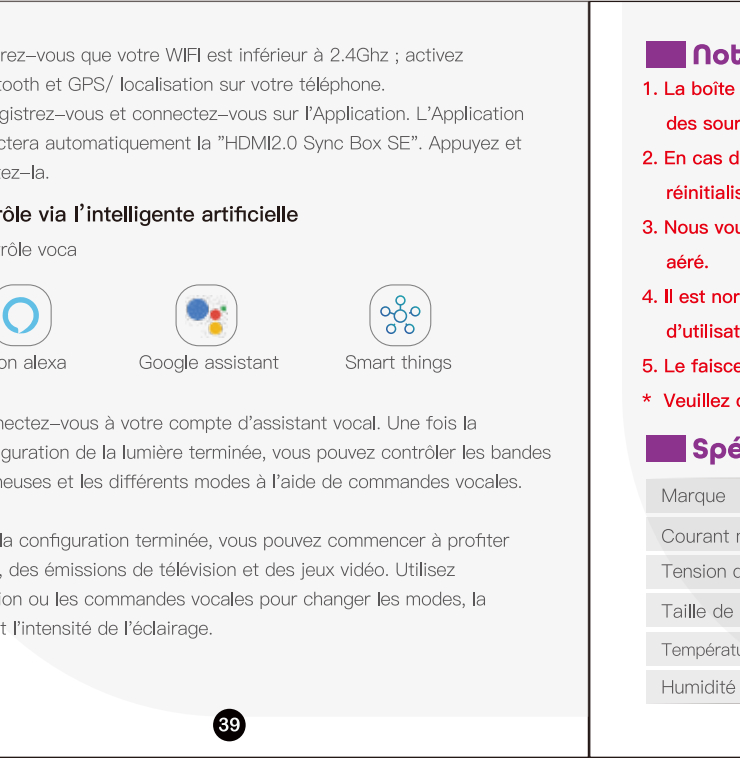
Kundendienst
Garantie: 12-monatige beschränkte Garantie
Unterstützung: Lebenslangere technischer Support
E-Mail: support@lymi.com

Manuel d'utilisation Sommaire
Contenu du coffret P30
Présentation P31
Caractéristiques de la boîte de synchronisation P32
Calibrage rapide en mode synchronisation P36
Contrôle de la lumière P37-P39
Notice P40
Spécifications P40
Dépannage P41-P42
Kundendienst P42

Contenu du coffret
Boîte de synchronisation Neo HDMI 2.0 édition standard 1
Câble HDMI 2.0 1
Vidéo pour la boîte de synchronisation 2
Adaptateur secteur 1
Bande lumineuse 1
Crochets de fixation pour la bande lumineuse 10
Manuel d'utilisation 1



Indicateur Statut
WiFi Indicateur: Prêt pour la connexion WiFi
Mode Sync: Voyant allumé - En mode Synchronisation
LED latéraux LED: Sens d'installation de la LED



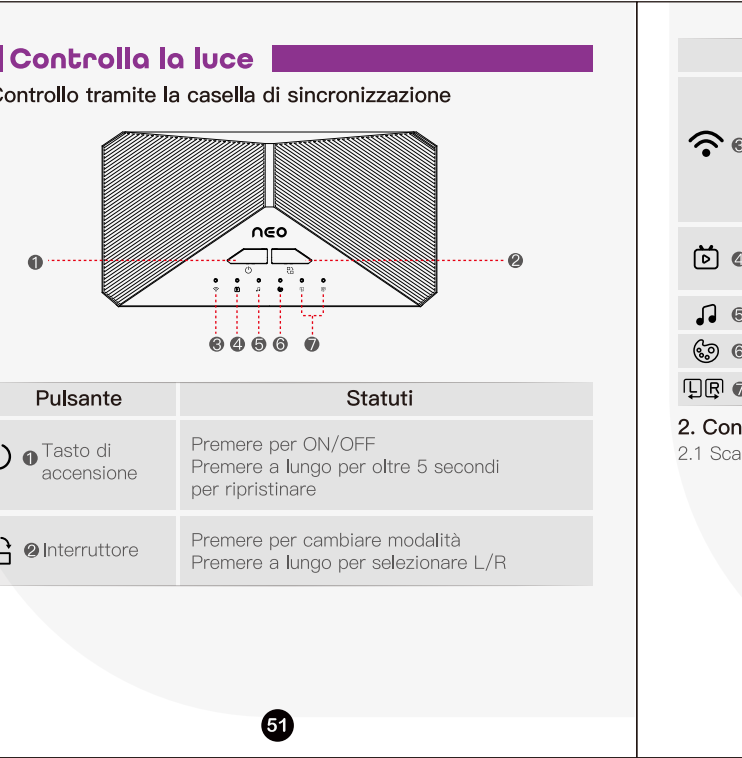
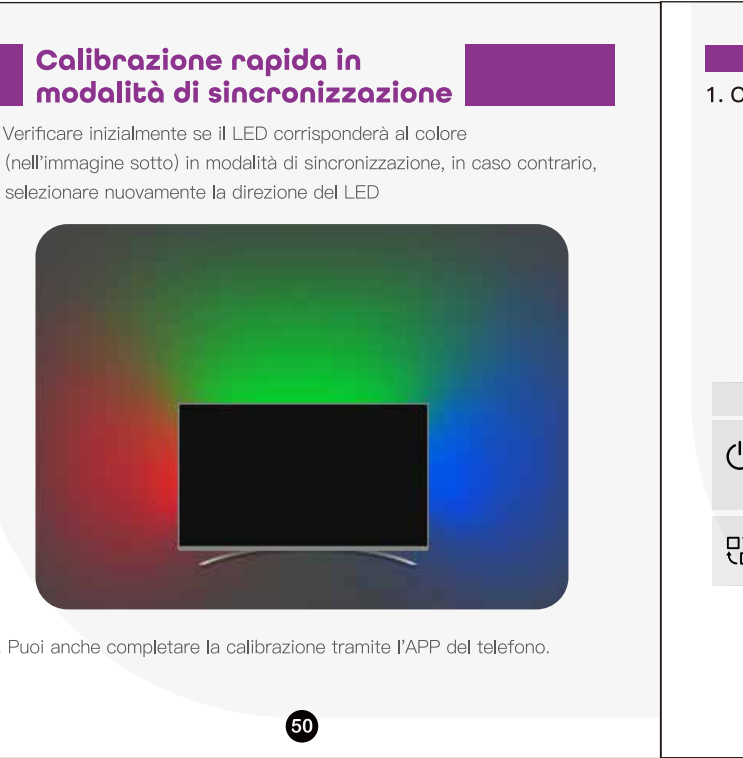
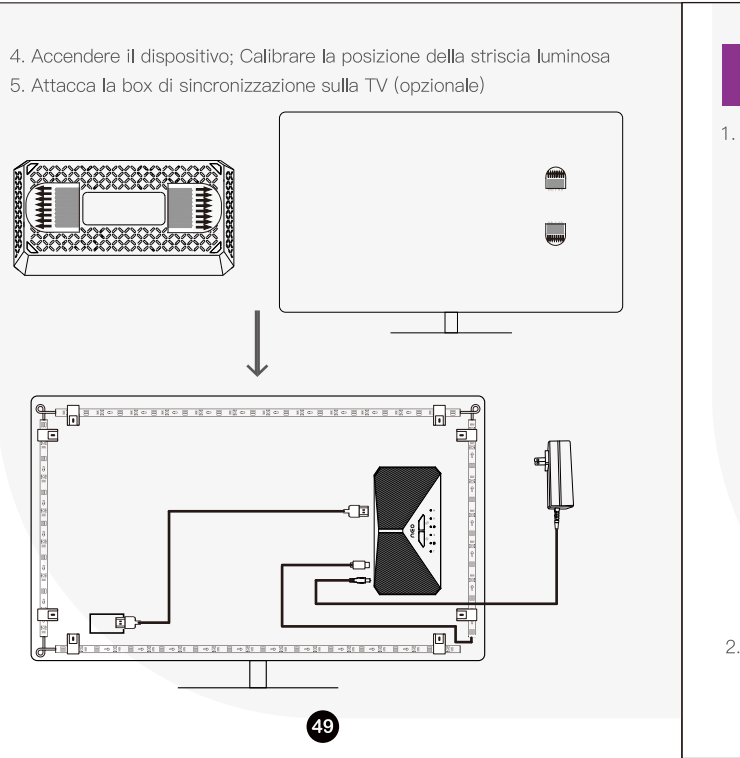
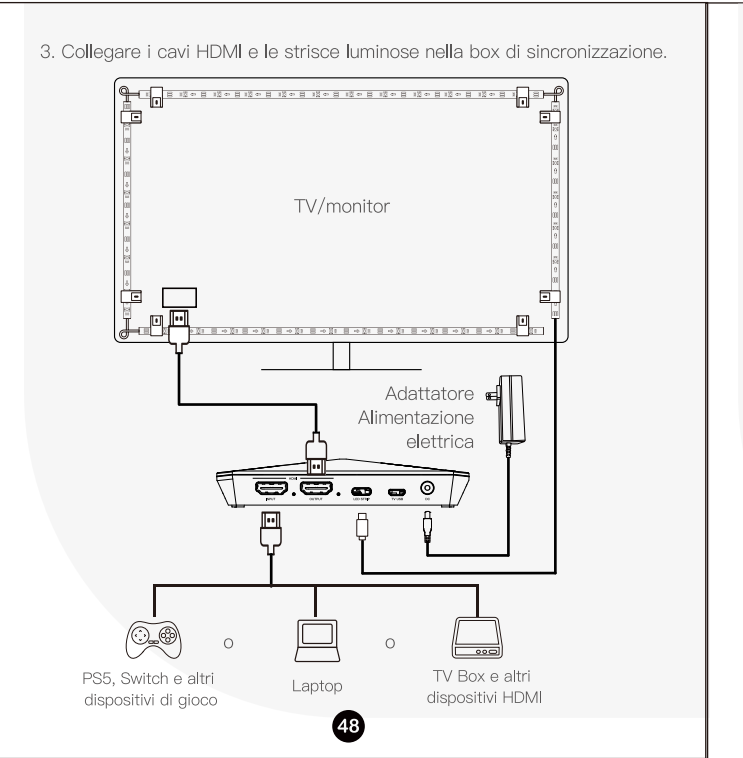
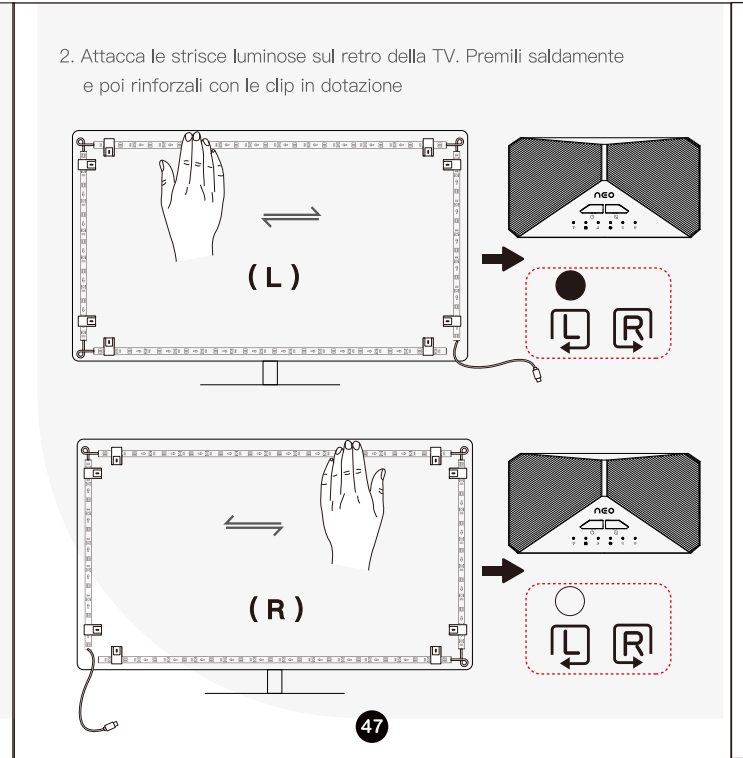
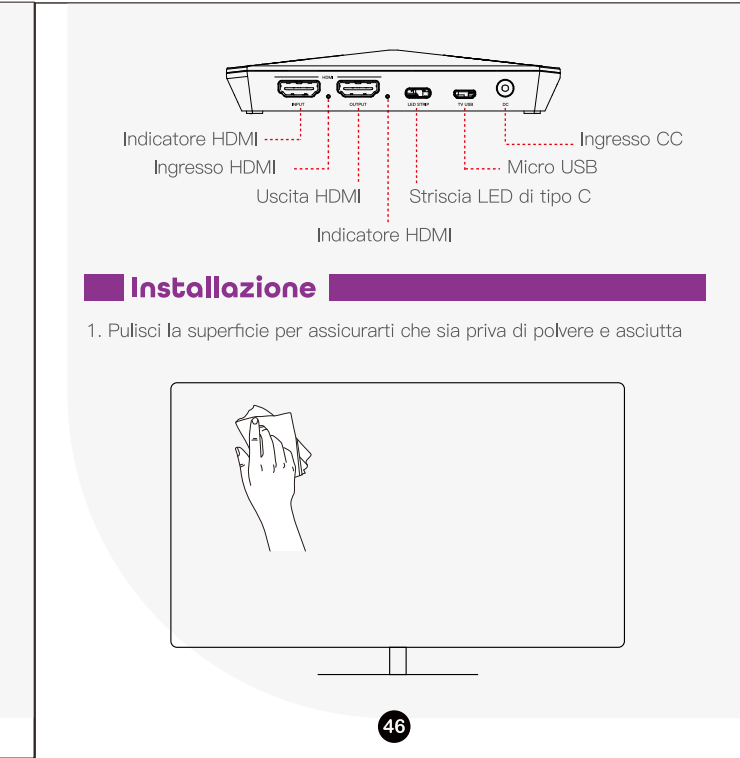
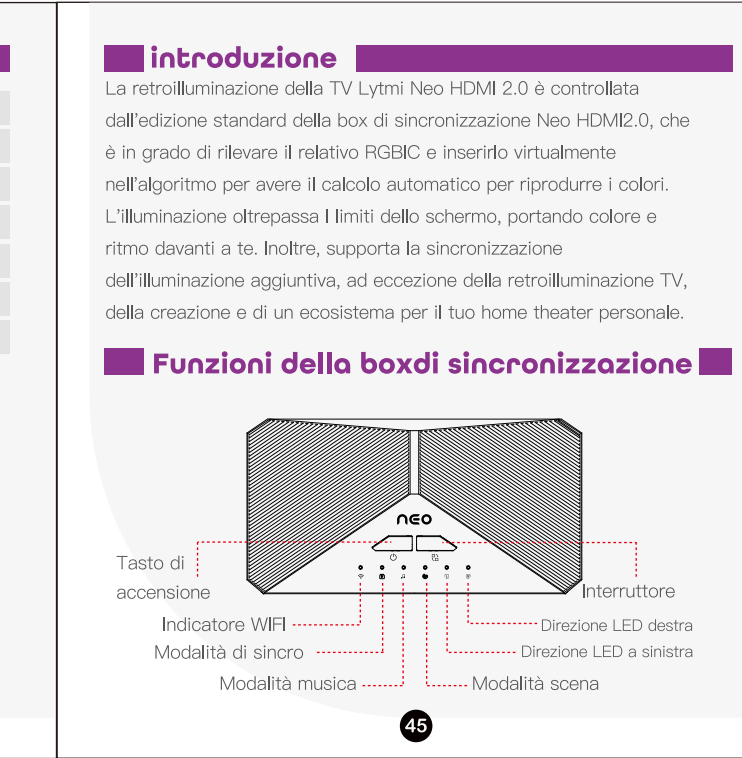
Notice
1. Le Neo HDMI 2.0 Sync Box édition standard supporte des sources vidéo 4K/60FPS.
2. En cas de problème ou d'échec de connexion, vous pouvez réinitialiser Neo pour rétablir les paramètres d'usine et recommencer.

Dépannage
1. Impossible de se connecter à l'Application
2. Impossible de synchroniser
3. La bande lumineuse ne s'allume pas/ Certaines LED ne s'allument pas

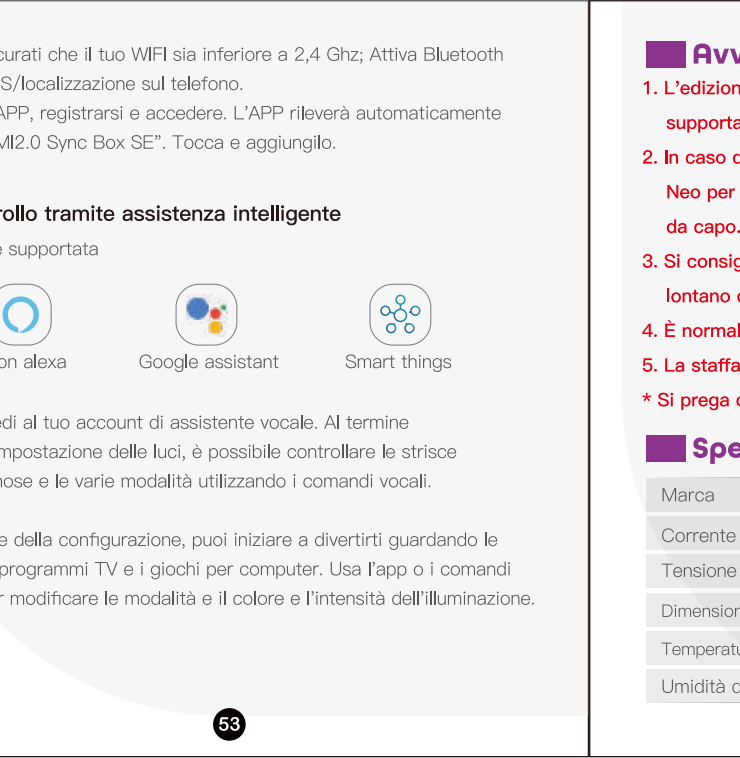
Kundendienst
Garantie: limitée de 12 mois
Assistance: Support technique à vie
E-Mail: support@lymi.com

Manuale Utente Contenuti
Cosa c'è nella scatola? P44
Introduzione P46
Funzioni della scatola di sincronizzazione P46-P49
Calibrage rapide en modalità di sincronizzazione P50
Controllo della luce P51-P53
Avviso P54
Specifiche P54
Risoluzione dei problemi P55
Assistenza clienti P56

Cosa c'è nella scatola?
Neo HDMI 2.0 Sync Box edizione standard 1
Cavo HDMI 2.0 1
Video per la scatola di sincronizzazione 2
Adattatore di alimentazione CA 1
Striscia di luce LED 1
Clic di fissaggio per striscia luminosa 10
Manuale d'uso 1



Indicatore Stato
Lampadina Statut: Pronto per la connessione WiFi
Lampadina Sincronizzazione: Indicatore acceso - Connessione WiFi
Modelli di sincronizzazione: Indicatore acceso - In modalità musica



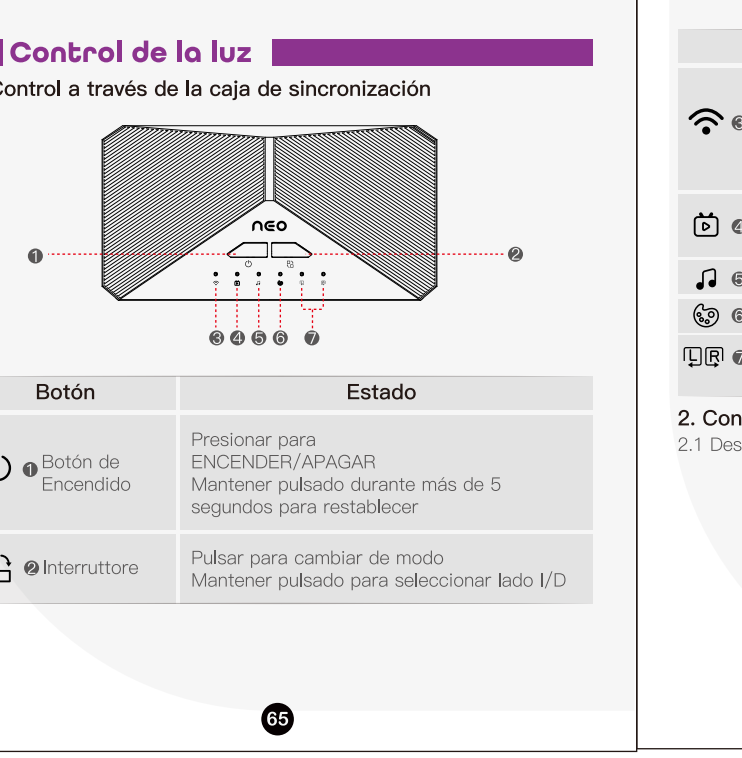
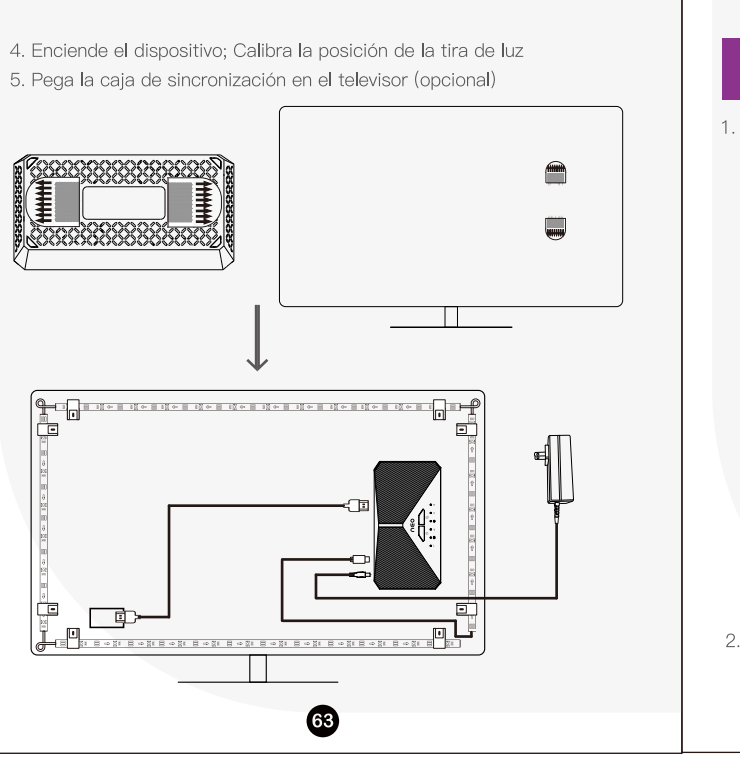
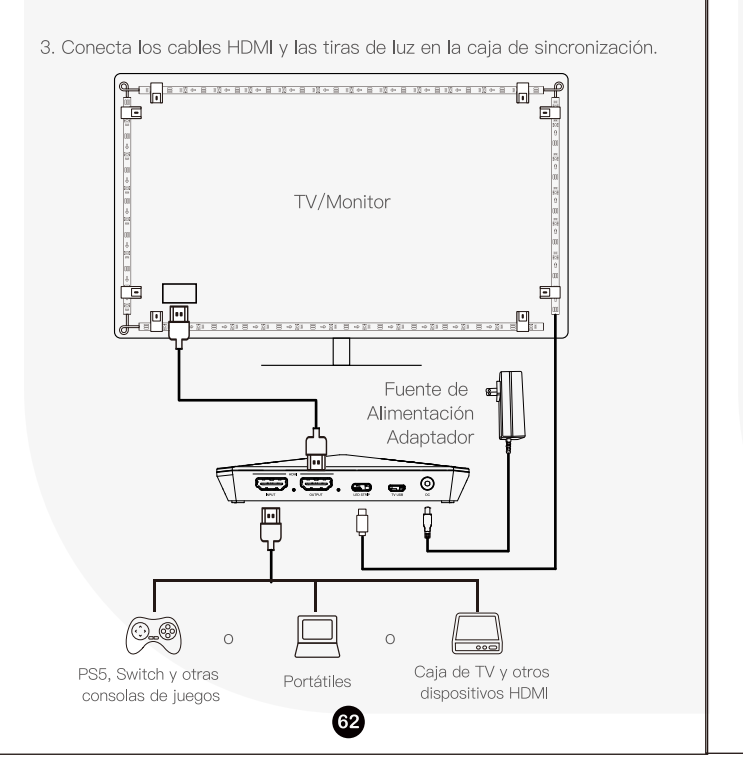
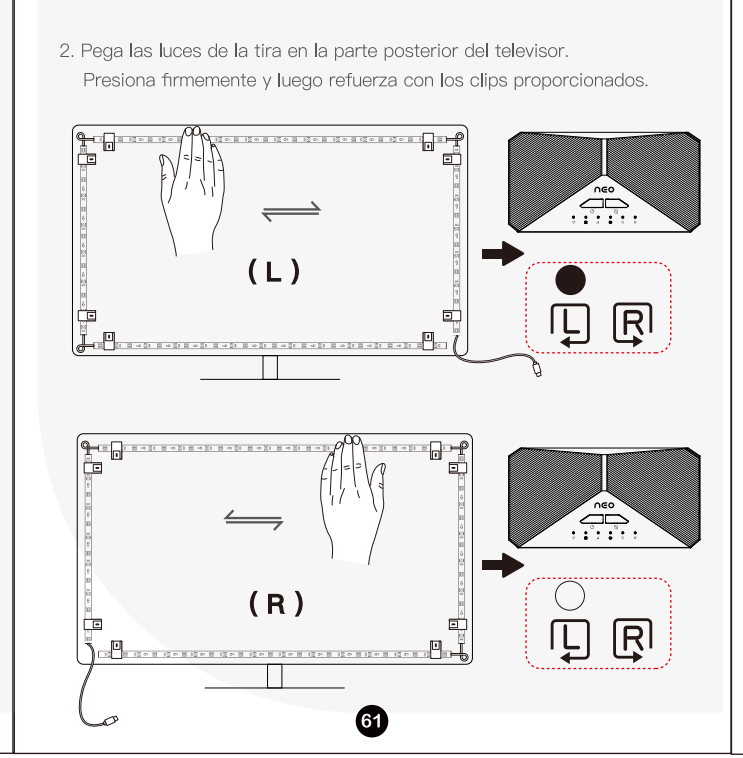
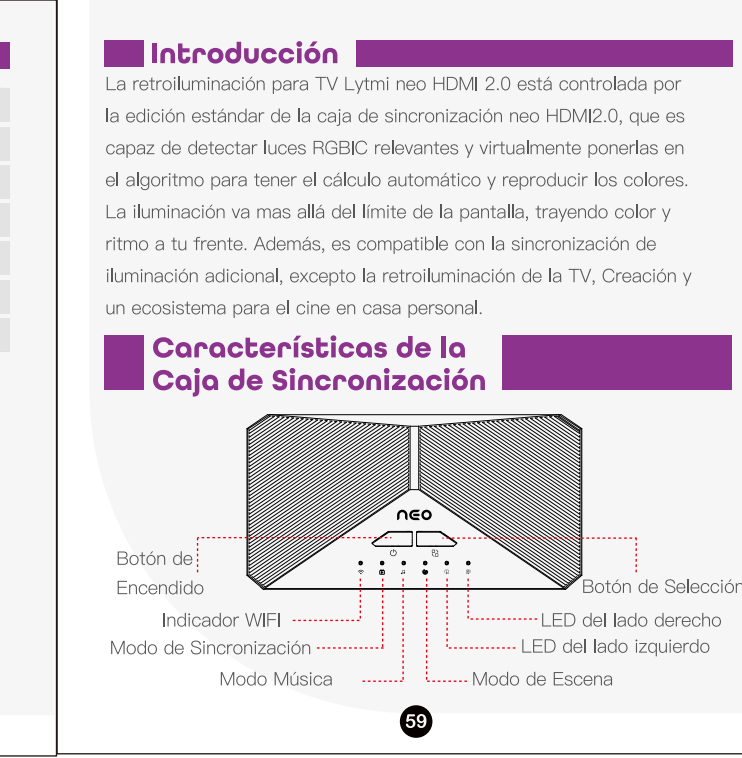
Avviso
1. Verificare l'installazione della LED con il cavo di sincronizzazione Neo HDMI 2.0.
2. Se si verifica un problema di connessione, è possibile ripristinare Neo.

Risoluzione dei problemi
1. Impossibile utilizzare la modalità di sincronizzazione
2. Impossibile connettersi con l'APP
3. L'indicatore LED non si accende/Alcuni LED non si accendono

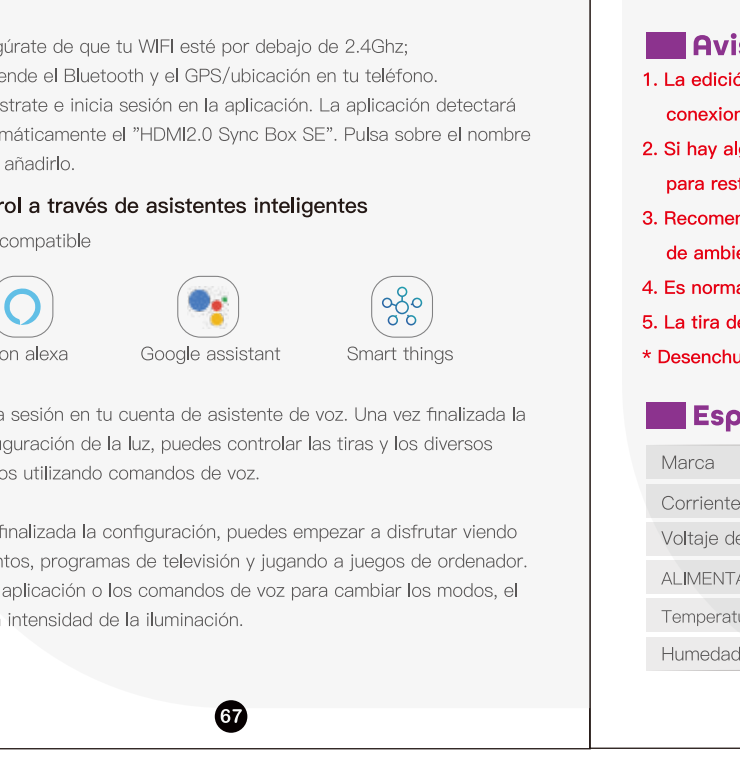
Assistenza clienti
Garanzia: 12 mesi di garanzia limitata
Supporto tecnico: supporto tecnico a vita
E-Mail: support@lymi.com

Manual de Usuario Contenido
¿Qué incluye el kit? P58
Introducción P59
Características de la Caja de Sincronización P59-P63
Calibración rápida en modo de sincronización P64
Control de la luz P65-P68
Especificaciones P68
Resolución de Problemas P69
Servicio de Atención al Cliente P69-P70

¿Qué incluye el kit?
Neo HDMI 2.0 Sync Box edición estándar 1
Cable HDMI 2.0 1
Video para la Caja de Sincronización 2
Adaptador de Corriente CA 1
Tira de luz LED 1
Clics de fijación para tira de luz 10
Manual del Usuario 1



Indicador Estado
Preparado para la conexión WiFi: Preparado para la conexión WiFi
Modo de Sincronización: Indicador encendido - En modo de sincronización



Aviso
1. Verificar la instalación de la caja de sincronización Neo HDMI 2.0.
2. Si hay algún problema o falla en la conexión, puede restablecer Neo.

Risoluzione dei problemi
1. No se puede utilizar el modo de sincronización
2. No se puede conectar con la aplicación
3. La luz de la tira no se enciende/ Algunos LED no se encienden

Servicio de Atención al Cliente
Garantía: Garantía limitada de 12 meses
Soporte técnico: Soporte técnico de por vida
E-mail: soporte@lymi.com