



QUICK START GUIDE

For product support visit www.6gcool.com

Read Before Use!

- Read the instructions before use, follow them and keep them for reference.
- Please note the product is not waterproof.
- Wipe clean with damp cloth and mild soap or use disinfectant.
- Do not soak the HEPA filter or clean it with water or other liquid.
- Warning! Not suitable for children under 8 years. For use under adult supervision.
- To ensure the best filtration performance, only use 6G replacement filters.
- Disassembling the product, or using it in ways not approved by the manufacturer might void the warranty.

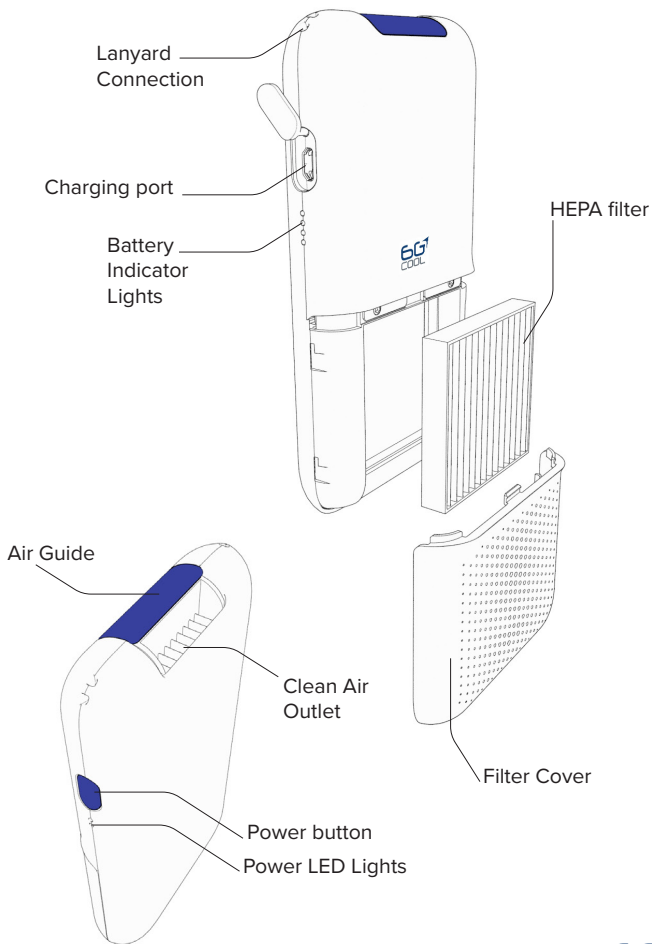


Designed in Finland



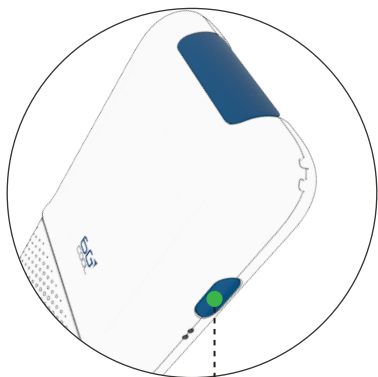
Manufactured in China

Product functions:



1

Power



Power ON

1



Fan Speed Low

2



Fan Speed Medium

3



Fan Speed High

4



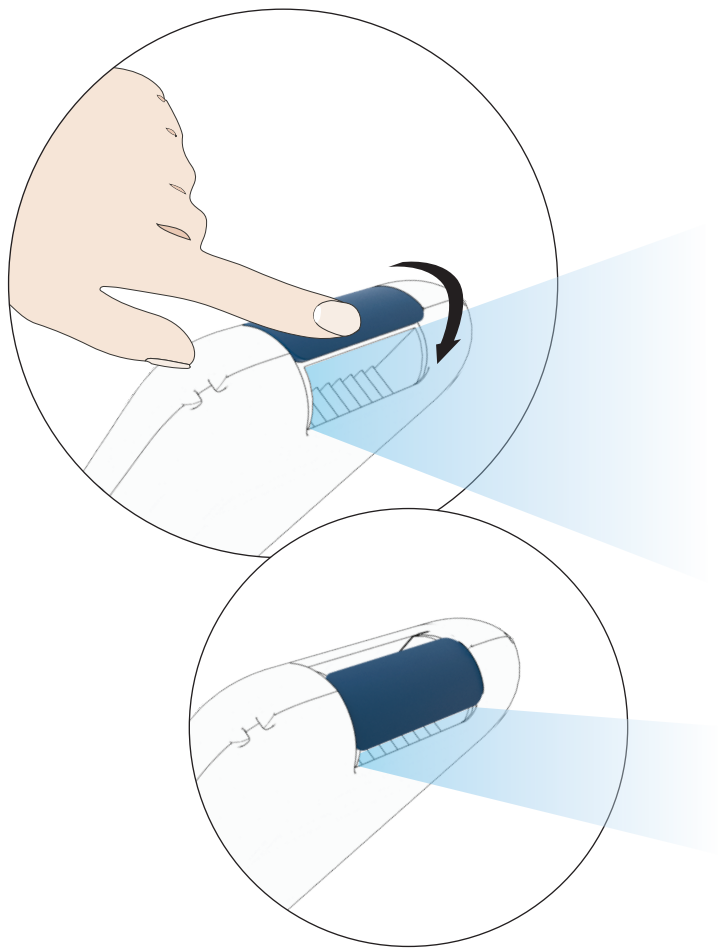
Power OFF (double tap)





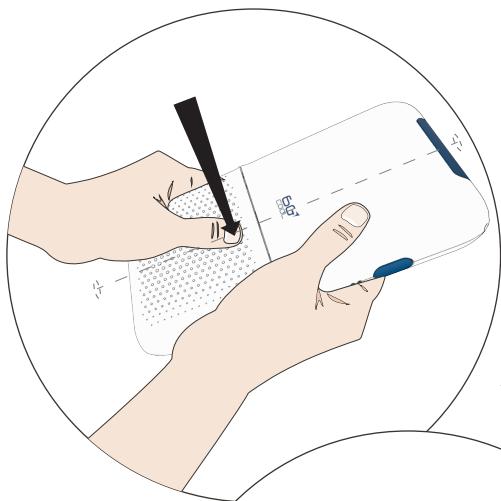
3

Adjusting The Airflow

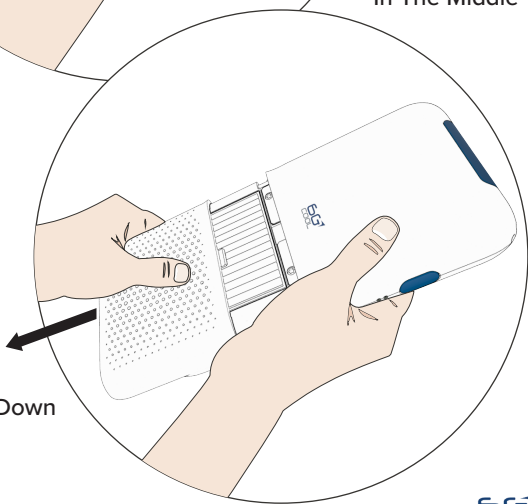


4

Replacing the HEPA filter



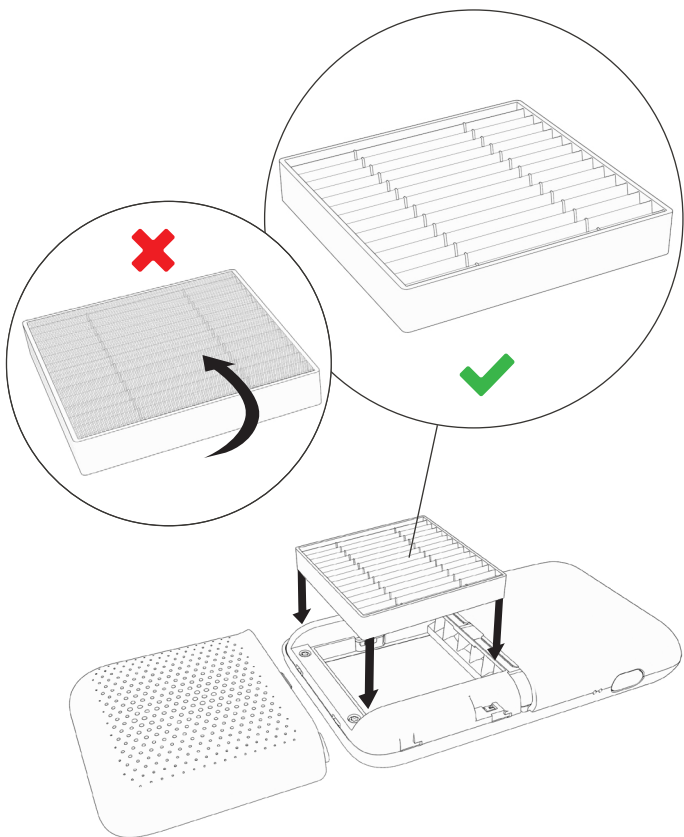
1. Press Down
In The Middle

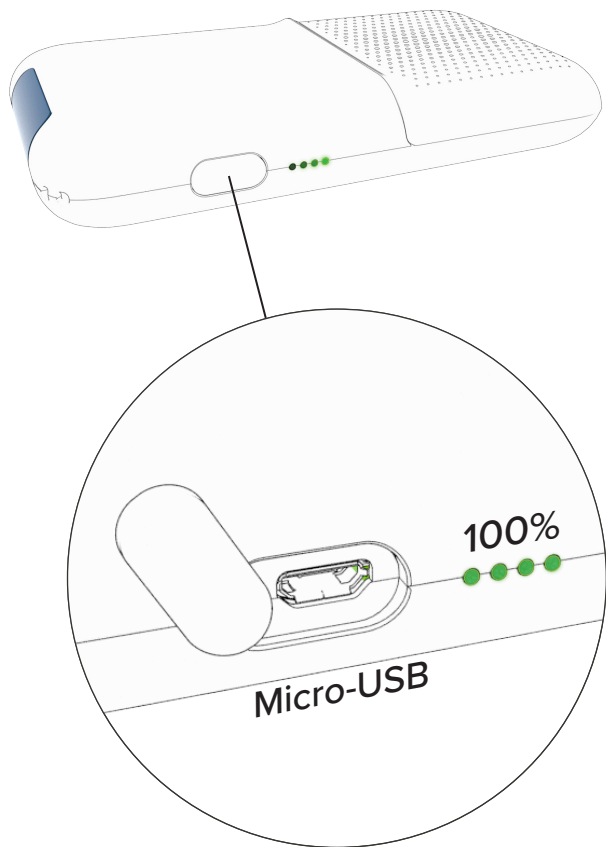


2. Pull Down

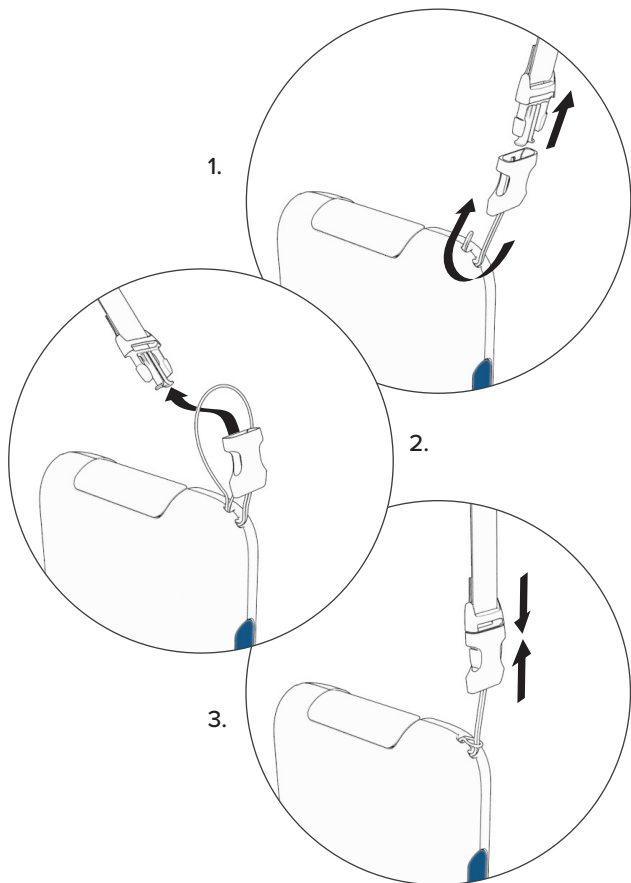
5


Filter Orientation

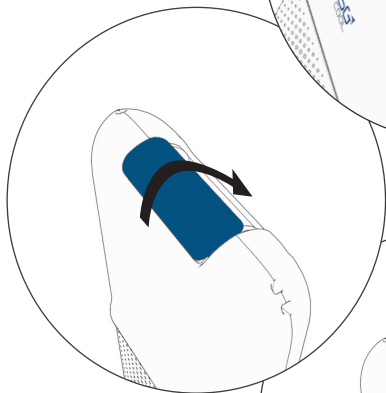




Preparing The Lanyard

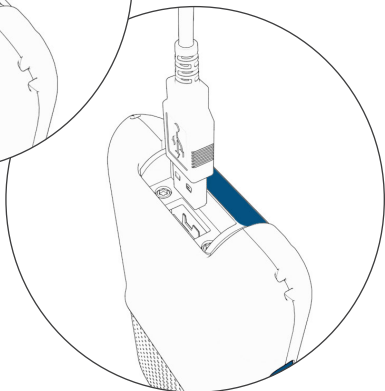


1. Power ON 



2.

3.



6G[↑]
COOL



www.6gcool.com