

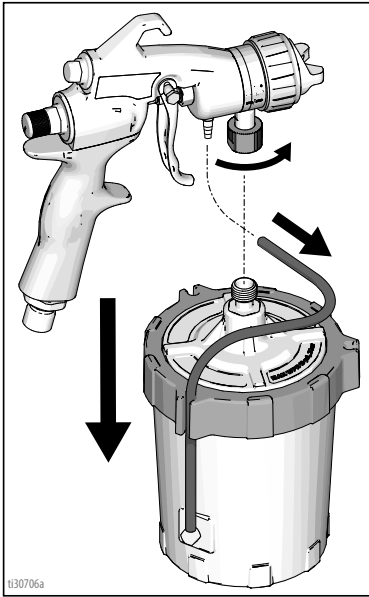
Cleanup

Cleaning FlexLiner System

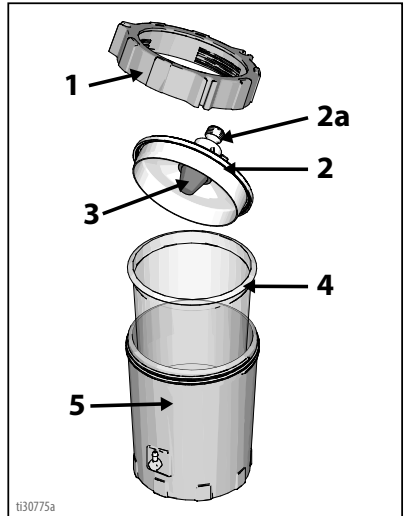
NOTICE

Solvents, such as lacquer thinner, can damage parts of the FlexLiner System. Do NOT immerse parts of the FlexLiner System in solvent.

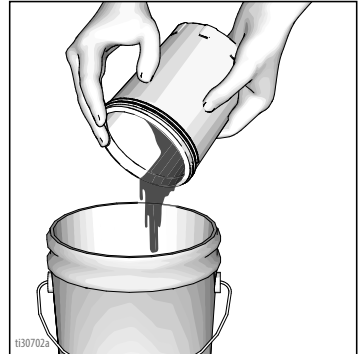
1. Perform **Pressure Relief Procedure**, page 10.
2. Disconnect gun from FlexLiner system.



3. Loosen ring (1) from cup (5). Remove ring (1) and cover (2) from cup. Verify FlexLiner remains in cup upon removal of cover and ring.



4. Return excess fluid to original container. Hold the FlexLiner (4) in place when pouring.



5. It is recommended to dispose of the used FlexLiner (4) and install a new one. If reusing, clean by wiping all excess fluid from FlexLiner (4).



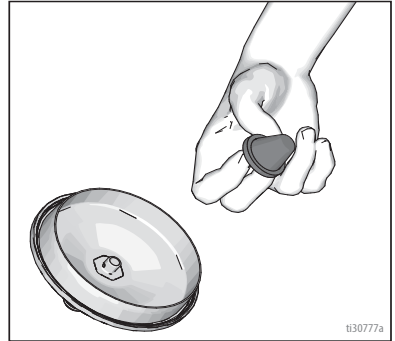
NOTICE

Dispose of FlexLiner, cleaning materials, and unused fluid according to local regulations. Refer to Safety Data Sheet (SDS) of fluids used.

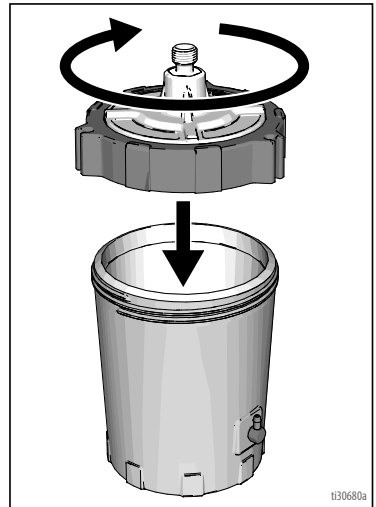
6. Wipe excess fluid from cover (2) and ring (1) of FlexLiner System.



7. Fill the FlexLiner (4) approximately half-full with cleaning fluid (warm water or appropriate solvent).
8. Remove and clean material strainer (3) by flushing with cleaning fluid. Re-install material strainer (3).



9. Install cover (2) and ring (1) onto cup (5).

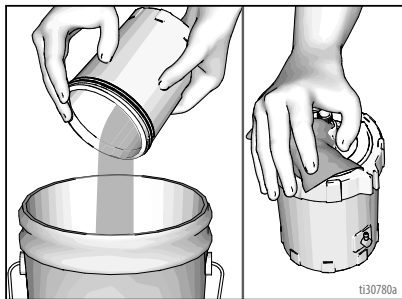


Cleanup

10. Cover cup fitting (2a) with a rag, shake the entire FlexLiner System for a minimum of ten seconds.

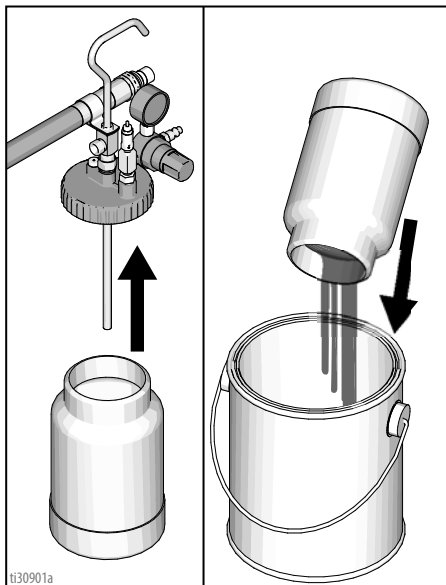


11. Wipe clean and dry all components of FlexLiner System. Properly dispose of cleaning fluid.

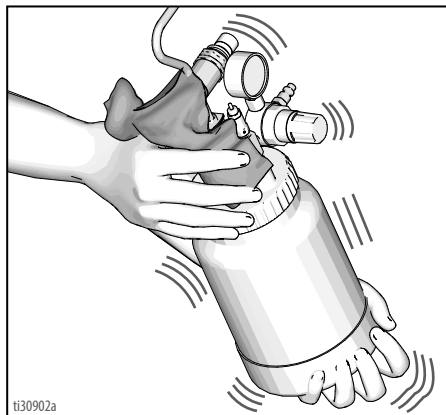


Cleaning ProComp Remote Cup

1. Perform **Pressure Relief Procedure**, page 10.
2. Remove cover from remote cup and return excess fluid to original container.



3. Wipe excess fluid from remote cup and cover.
4. Fill remote cup quarter-full with cleaning fluid (warm water or appropriate solvent).
5. Install cover.
6. Cover cup fitting with rag, shake remote cup assembly for a minimum of ten seconds.



7. Wipe clean and dry all components of remote cup. Properly dispose of cleaning fluid.

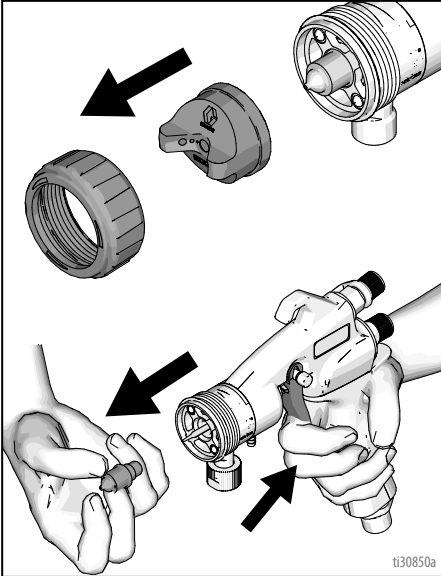
Cleaning HVLP Edge II Gun

NOTICE

Solvents, such as lacquer thinner, can damage parts of the HVLP Edge II gun. Do NOT immerse parts of the HVLP Edge II gun in solvent.

1. Remove retaining ring and air cap.
2. Trigger the gun and remove fluid nozzle from gun.

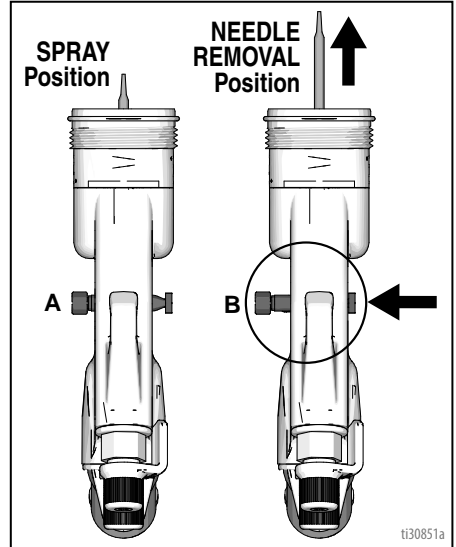
NOTE: Edge II Plus guns contain air cap guide and spring held in place by fluid nozzle. Upon removal of fluid nozzle, set aside air cap guide and spring.



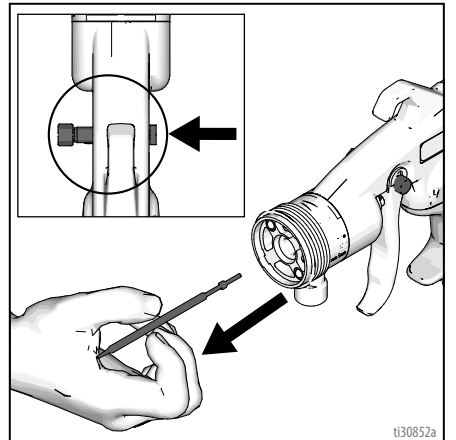
NOTICE

Trigger the gun whenever removing or installing the fluid nozzle. This prevents the fluid nozzle and needle seating surfaces from being damaged.

3. Move trigger slide from SPRAY position (A) to NEEDLE REMOVAL position (B).



4. Remove needle from front of gun.



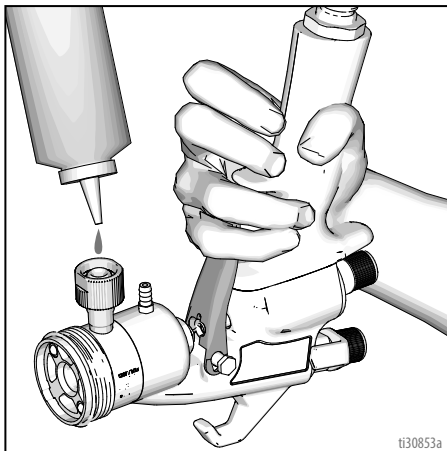
Cleanup

- Wipe or flush fluid from nozzle and needle. If necessary, clean retaining ring, air cap, air cap guide, and spring.

NOTICE

Do not use metal tools to clean the fluid nozzle or air cap holes as this may scratch them, causing fluid leaks and a distorted spray pattern.

- Using a squeeze bottle, flush cleaning fluid through the gun. Hold the gun upside down, pull the trigger, and dispense cleaning fluid into the cup connection.



- Re-install needle and move trigger slide from NEEDLE REMOVAL position (B) to SPRAY position (A).
- Trigger the gun and install spring, air cap guide, and fluid nozzle. Install air cap and retaining ring.

Troubleshooting



1. Follow **ProComp Models**, page 9, before checking or repairing.
2. Check all possible problems and causes before disassembling the unit.

Problem	Cause	What to Do
Sprayer not starting	No Power	Check electrical outlet for power. Cycle ON/OFF switch.
		Check that correct power cord is used and plugged in.
		Check circuit breaker. Push to reset.
	Sprayer automatically shut-off while in SmartStart setting (ProContractor and ProComp models only)	Verify air valve prior to gun is open. Trigger gun.
No fluid delivery	No material	Check cup for material. See Fill FlexLiner System , page 13.
	No cup pressurization	Check for leaks in the FlexLiner System. See "FlexLiner System" section, page 28.
		ProComp:
		Check for air leaks from the remote cup cover and gasket. Tighten cover if loose. Clean or replace gasket as necessary.
		Check for air flow from male quick-disconnect at ProComp outlet.
		Turn pressure regulator on remote cup clockwise. Look for pressure on gauge. If no pressure, check air line fittings.
		Check hole in remote cup cover at needle valve for blockage or dirt. Clean if necessary.
	Gun tubing clogged	Check for obstructions in gun tubing. Clean or replace gun tubing if necessary.
	Fluid inlet clogged	FlexLiner System: Check for obstructions in material strainer and inlet fitting.
		ProComp:
Check if fluid pickup tube in remote cup is loose. Tighten.		
	Blow out and clear material hose.	
Trigger pin in UNLOCK position	Check trigger pin location. Must be in SPRAY position.	

Troubleshooting

Problem	Cause	What to Do
Poor atomization	Dirty gun	Clean gun. See Cleaning HVLP Edge II Gun , page 25.
	Dirty air filters	Clean turbine and motor air filters. Replace as necessary. See Cleaning Filters , page 21.
	Extension cord too long	Extension cord must be a 3-wire, 12 AWG (2.5mm ²) minimum, 50 ft (15 m) maximum length.
	Air hose too long	Replace with shorter hose, no shorter than 20 ft (6,1 m)
	Leaking air hose connections	Disconnect and securely connect all hose connections.
Circuit breaker trips	Dirty air filters	Clean turbine and motor air filters. Replace as necessary. See Cleaning Filters , page 21.
	Incorrect power supply voltage	Verify power supply voltage is correct for sprayer model.
	High ambient temperature	Move sprayer to cooler area.
	Excessive current draw	Return to authorized service center.
TurboControl LED Indicator blinks (ProContractor and ProComp models only)	Dirty air filters	Clean turbine and motor air filters. Replace as necessary. See Cleaning Filters , page 21.
Sprayer shutoff while spraying	Circuit breaker	See "Circuit breaker trips" section above.
	Dirty air filters (Blinking TurboControl LED Indicator - ProContractor and ProComp models only)	Clean turbine and motor air filters. Replace as necessary. See Cleaning Filters , page 21.
	SmartStart active (ProContractor and ProComp models only)	Release gun trigger and re-trigger gun. Turn switch to ON position if SmartStart is not desired.
Sprayer does not automatically shut-off while in SmartStart setting (ProContractor and ProComp models only)	Leaking air hose connections	Verify air hose and attached components are those shipped with the sprayer.
		Disconnect air hoses. Verify o-ring is present inside connection fitting at turbine end of hose. If using a whip hose, verify gasket is present inside connection fitting. Securely connect all hose connections.
		Replace with Graco HVLP accessories, if necessary. See pages 36 and 37.
	Gun leaking air	Verify use of Edge II Plus gun. If SmartStart functions when air valve at end of hose is closed, clean gun. See Cleaning HVLP Edge II Gun , page 25. See separate HVLP Edge II Gun manual.
FlexLiner System:		

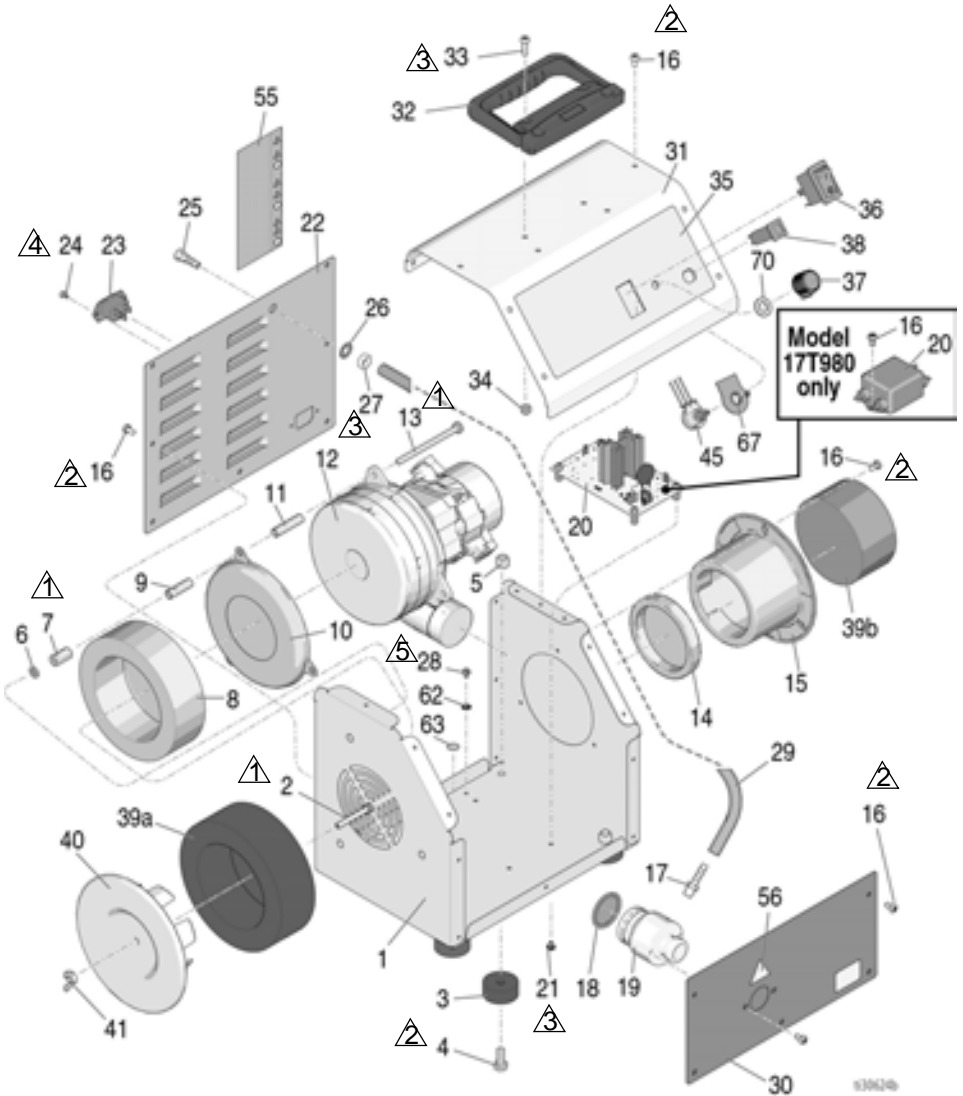
Problem	Cause	What to Do
FlexLiner does not collapse or collapses slowly	Dirty sealing surfaces	Remove ring, clean sealing surfaces, securely install ring. See Fill FlexLiner System , page 13.
	Incorrect or no air cap installed on gun	Verify Edge II air cap is installed.
	Air cap is loose	Edge II: Verify retaining ring is fully installed.
		Edge II Plus: Verify retaining ring is installed to a position that does not result in a loose air cap.
	Artisan Valve (if installed) is set too low for desired application	Rotate valve clockwise to increase air flow, until the desired flow is achieved.
	Gun tubing	Verify gun tubing is properly connected between the cup and gun.
		Verify gun tubing is not kinked.
Air leaking from cup	Damaged tubing. Remove damaged section of tubing. Replace tubing as necessary. See separate HVLP Edge II gun manual.	
	Damaged connection between cup and air fitting. Verify fitting is fully installed. If necessary, replace FlexLiner System. See separate HVLP Edge II gun manual.	
Fluid leaking between cup and ring	Cup filled too full	Verify cup is not filled above "MAX FILL" line.
	Dirty sealing surfaces	Remove ring, clean sealing surfaces, securely install ring. See Fill FlexLiner System , page 13.
Fluid leaking between cup and gun	Loose cup connection	Tighten connection. Use wrench as needed.
	Damaged o-ring on cup connection	Replace o-ring. Apply grease to o-ring to aid in assembly.
Fluid present at bottom of cup	FlexLiner not installed	Install FlexLiner.
	Damaged FlexLiner	Replace FlexLiner.
Pulsing spray pattern	Air not fully evacuated from FlexLiner System.	See step 3 of Startup , page 13.

Parts

Parts

Standard Models

Ref.	Torque
①	110-115 in-lb (12.5 - 13.0 N•m)
②	20-25 in-lb (2.5 - 3.0 N•m)
③	15-20 in-lb (1.7 - 2.3 N•m)
④	10-15 in-lb (1.1 - 1.7 N•m)
⑤	35-40 in-lb (4.0 - 4.5 N•m)




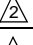
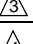
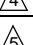

Parts List - Standard Models

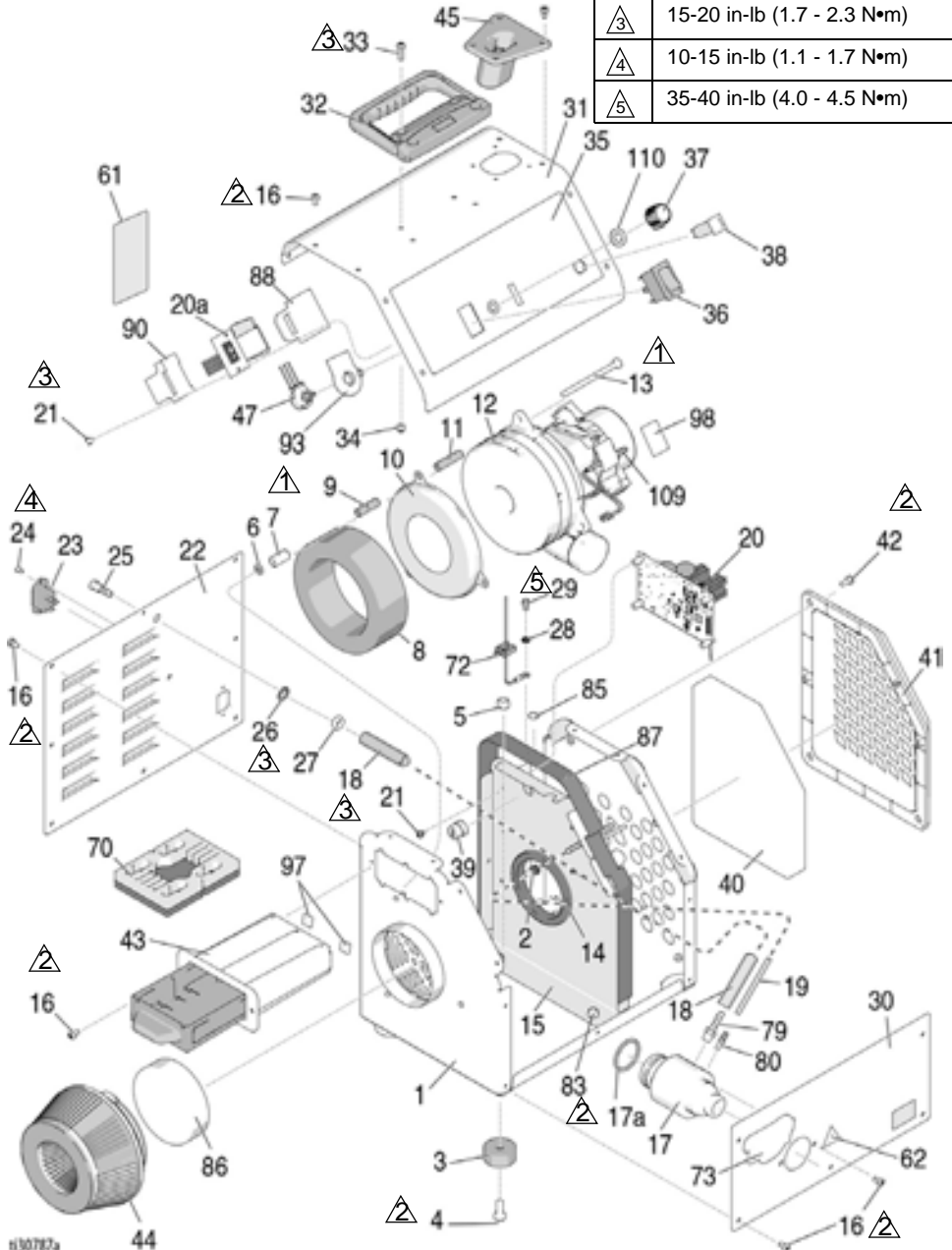
Ref. Part	Description	Qty	Ref. Part	Description	Qty
1	17R054 BOX, bottom, painted	1	21	108860 SCREW, machine	4
2	129531 SCREW, cap hex hd	1	22	17R055 COVER, back, painted	1
3	113817 BUMPER	4	23	114064 PLUG, inlet	1
4	100057 SCREW, cap, hex hd	4	24	15W998 SCREW, mach, torix	2
5	111040 NUT, lock, insert, nylock, 5/16	4	25	17N459 FITTING, barbed, exhaust	1
6	125135 WASHER, flat	3	26	100639 WASHER, lock	1
7	129443 NUT, coupler	3	27	101448 NUT, jam	1
8	GASKET, turbine	1	28	111593 SCREW, grounding	1
9	15W153 7.0 Standard	3	29	17N871 HOSE, air	1
	15W152 9.0 Standard		30	17R056 COVER, front, painted	1
	SPACER, back, turbine		31	17X786 KIT, cover	1
10	17N374 7.0 Standard	3	32	17N390 HANDLE, carry, pivot	1
	17N376 9.0 Standard		33	17R608 SCREW, mach, torx pan hd	4
10	194094 PLATE, turbine	1	34	116969 NUT, lock	4
11	SPACER, front, turbine	3	35	LABEL, standard series	1
	17N373 7.0 Standard		17P297 7.0 Standard		
	17N375 9.0 Standard		17P298 9.0 Standard		
12	KIT, repair, turbine (includes 6, 7, 8, 9, 10, 11, 13, 14, 18)	1	17U103 Model 17T980		
	17R936 Model 17N263, 17T980, 17U105		36	120660 SWITCH, rocker	1
	17R937 Model 17N264		37	17N957 KNOB, potentiometer	1
	17R939 Models 17P528, 17P534, 17R074		38	CIRCUIT, breaker	1
	17R940 Models 17P529, 17P535, 17R075		114403 120V Models		
			16A348 230V Models		
13	101530 SCREW, cap	3	39	17R296 KIT, filter (includes 39a, 39b)	1
14	192845 GASKET, duct	1	40	17N387 COVER, filter, turbine	1
15	17N388 HOUSING, filter, inlet, motor	1	41	100011 NUT, wing	1
16	129444 SCREW, machine, torx pan head	23	45	17R946 KIT, repair, potentiometer (includes 37, 67)	1
			55▲	17R297 LABEL, warning	1
17	15Y606 FITTING, barbed	1	56▲	15K616 LABEL, caution	1
18	17M388 PACKING, o-ring	1	62	102063 WASHER, lock, ext	1
19	17N436 FITTING, outlet	1	63▲	186620 LABEL, symbol, ground	1
20	KIT, repair, control, board (includes 21)	1	67	17X783 ISOLATOR	1
			69▲	17R747 LABEL, set, international (not shown)	1
	17R942 120V Models		70	17X785 WASHER, nylon	1
	17R943 230V Models				
	116168 Model 17T980				

▲ Replacement Danger and Warning labels, tags, and cards are available at no cost.

Parts

Parts ProContractor Models

Ref.	Torque
	110-115 in-lb (12.5 - 13.0 N•m)
	20-25 in-lb (2.5 - 3.0 N•m)
	15-20 in-lb (1.7 - 2.3 N•m)
	10-15 in-lb (1.1 - 1.7 N•m)
	35-40 in-lb (4.0 - 4.5 N•m)



1130787a


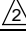
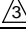
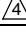
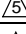
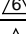
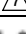
Parts List - ProContractor Models

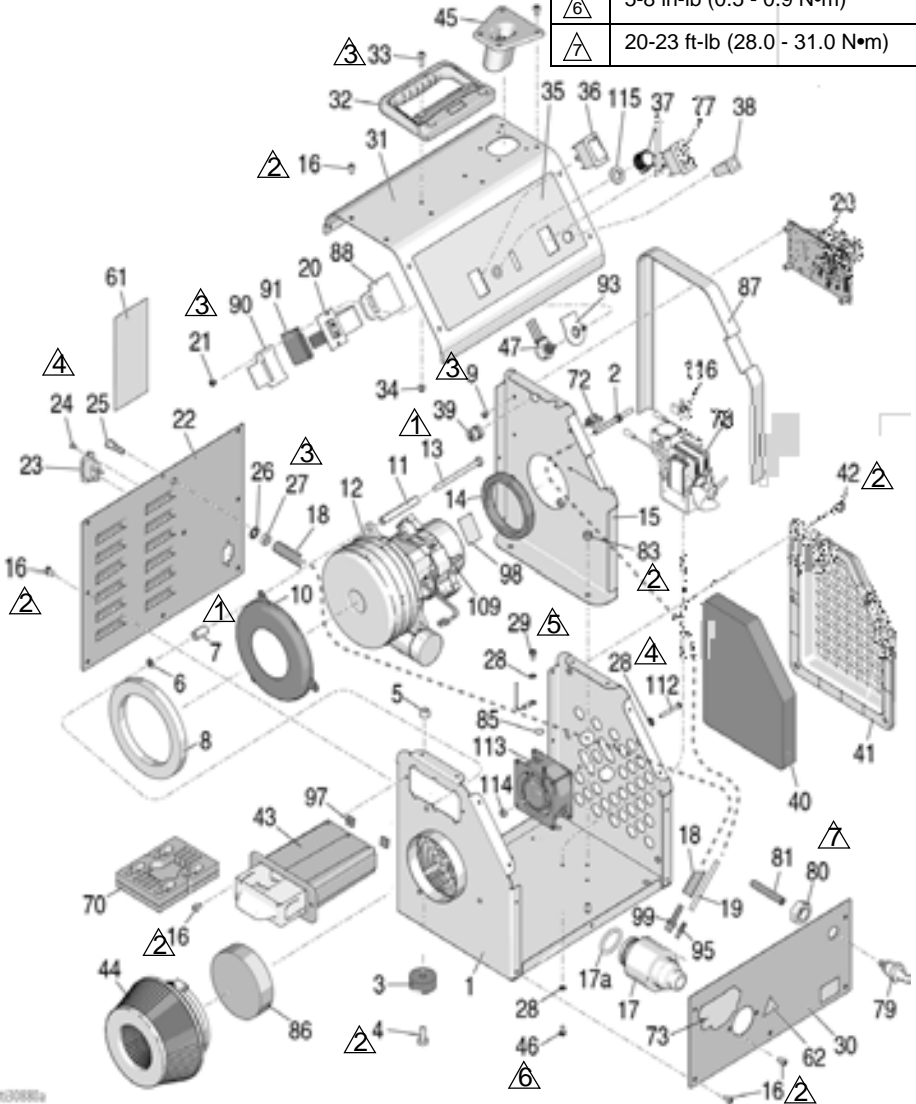
Parts List - ProContractor Models

Ref.Part	Description	Qty	Ref.Part	Description	Qty
1	17R057 BOX, bottom, painted	1	29	111593 SCREW, grounding	1
2	129604 GROMMET, rubber	1	30	17N477 COVER, front, painted	1
3	113817 BUMPER	4	31	17X787 KIT, cover	1
4	100057 SCREW, cap, hex hd	4	32	17N390 HANDLE, carry, pivot	1
5	111040 NUT, lock, insert, nylock, 5/16	4	33	17R608 SCREW, mach, torx pan hd	4
6	125135 WASHER, flat	3	34	116969 NUT, lock	4
7	129443 NUT, coupler	3	35	LABEL, ProContractor series	1
8	GASKET, turbine	1	17P299	7.0 ProContractor	
	15W153 7.0 ProContractor		17P300	9.0 ProContractor	
	15W152 9.0 ProContractor		17P301	9.5 ProContractor	
	192788 9.5 ProContractor		36	129590 SWITCH, power	1
9	SPACER, back, turbine	3	37	17N957 KNOB, potentiometer	1
	17N374 7.0 ProContractor		38	CIRCUIT BREAKER	1
	17N376 9.0 ProContractor			114403 120V Models	
10	194094 PLATE, turbine	1		16A348 230V Models	
11	SPACER, front, turbine	3	39	114689 BUSHING, strain relief	1
	17N373 7.0 ProContractor		40*	17R298 FILTER, air, motor	1
	17N375 9.0 ProContractor		41	17N467 COVER, filter	1
	17N377 9.5 ProContractor		42	129666 SCREW, mach	4
12	KIT, repair, turbine (includes 6, 7, 8, 9, 10, 11, 13, 14, 17a)	1	43	17N930 DRAWER, tool	1
	17R936 Model 17N265		44*	17R298 FILTER, air, turbine	1
	17R937 Model 17N266		45	17P447 HOLDER, gun	1
	17R938 Model 17N267, 17T982		47	17R948 POTENTIOMETER, assy (includes 21, 37, 88, 90, 93)	1
	17R939 Models 17P530, 17P536, 17R078		61▲	17R297 LABEL, warning	1
	17R940 Models 17P531, 17P537, 17R079		62▲	15K616 LABEL, caution	1
	17R941 Models 17P532, 17P538, 17R080		70	17P909 INSERT, toolbox	1
13	101530 SCREW, cap	3	72	117727 CLIP, wire	1
14	192845 GASKET, duct	1	73	17J933 LABEL, SmartStart	1
15	17N481 PANEL, wall, inner	1	79	15Y606 FITTING, barbed	1
16	129444 SCREW, machine, torx pan head	28	80	M70394 FITTING, barbed	1
17	17N425 VALVE, check	1	83	102040 NUT, lock	2
17a	17M388 PACKING, o-ring	1	85	186620 LABEL, ground	1
18	17N871 HOSE, air	1	86*	17R298 FILTER, air, turbine	1
19	17R093 TUBE, air, sensor	1	87	17P656 GASKET, wall, inner	1
20	KIT, repair, control board (includes 21, 88, 90)	1	88	17P789 GASKET, board, display	1
	17R944 120V Models		90	17R394 GASKET, barrier, ribbon	1
	17R945 230V Models		93	17X783 ISOLATOR	1
21	108860 SCREW, machine	6	97	17R769 PAD, drawer	1
22	17R058 COVER, back, painted	1	98	17S011 TAPE, high temp	1
23	114064 PLUG, inlet	1	99▲	17R747 LABEL, set, international (not shown)	1
24	15W998 SCREW, mach, torx	2	109	17R638 THERMIST, harness	1
25	17N459 FITTING, barbed, exhaust	1	110	17X785 WASHER, nylon	1
26	100639 WASHER, lock	1		▲Replacement Danger and Warning labels, tags, and cards are available at no cost.	
27	101448 NUT, jam	1		* Filter Kit 17R298 includes items 40, 44, 86	
28	102063 WASHER, lock	1			

Parts

ProComp Models

Ref.	Torque
	110-115 in-lb (12.5 - 13.0 N•m)
	20-24 in-lb (2.5 - 3.0 N•m)
	15-20 in-lb (1.7 - 2.3 N•m)
	10-15 in-lb (1.1 - 1.7 N•m)
	35-40 in-lb (4.0 - 4.5 N•m)
	5-8 in-lb (0.5 - 0.9 N•m)
	20-23 ft-lb (28.0 - 31.0 N•m)



130888

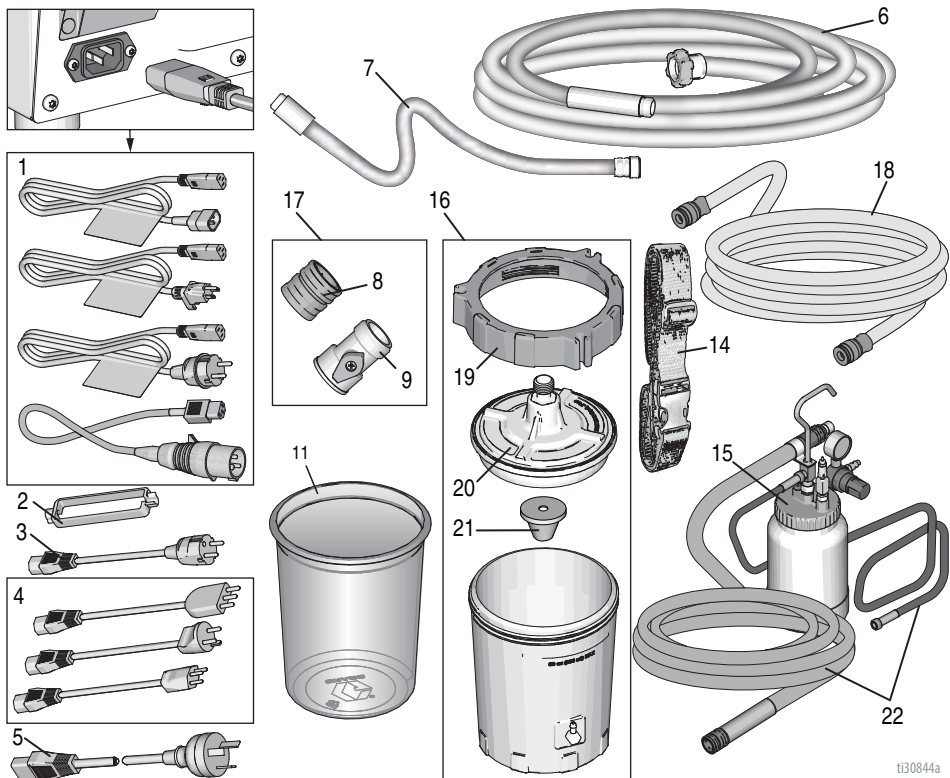
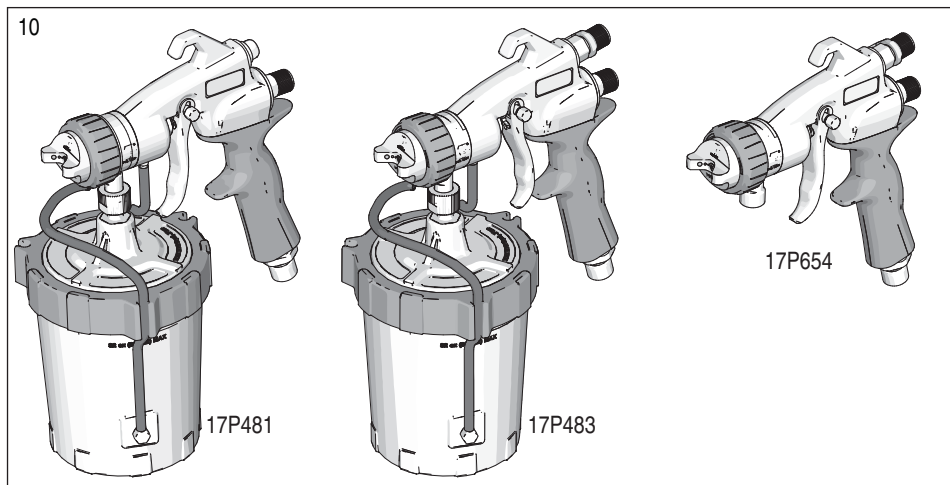
Parts List - ProComp Models

Parts List - ProComp Models

Ref. Part	Description	Qty	Ref. Part	Description	Qty
1	17R057 BOX, bottom, painted	1	41	17N467 COVER, filter	1
2	129604 GROMMET, rubber	1	42	129666 SCREW, mach	4
3	113817 BUMPER	4	43	17N930 DRAWER, tool	1
4	100057 SCREW, cap, hex hd	4	44*	17R298 FILTER, air, turbine	1
5	111040 NUT, lock, insert, nylock, 5/16	4	45	17P447 HOLDER, gun	1
6	125135 WASHER, flat	3	46	116431 SCREW, mach, hex wash hd	3
7	129443 NUT, coupler	3	47	17R948 POTENTIOMETER, assy (includes 21, 37, 88, 90, 91, 93)	1
8	192788 GASKET, turbine	1	61▲	17R297 LABEL, warning	1
10	194094 PLATE, turbine	1	62▲	15K616 LABEL, caution	1
11	17N377 SPACER, front, turbine	3	70	17P909 INSERT, toolbox	1
12	KIT, repair, turbine (includes 6, 7, 8, 9, 10, 11, 13, 14, 17a)	1	72	117727 CLIP, wire	1
	17R938 Model 17N269		73	17J933 LABEL, SmartStart	1
	17R941 Models 17P533, 17P539, 17R081		77	120660 SWITCH, rocker	1
13	101530 SCREW, cap	3	78	KIT, repair, compressor	1
14	192845 GASKET, duct	1	17R962	Model 17N269 (includes 46, 81,116)	
15	17N481 PANEL, wall, inner	1	17R964	Models 17P533, 17P539, 17R081 (includes 46, 81)	
16	129444 SCREW, machine, torx pan head	28	79	15X246 FITTING, connect, quick	1
17	17N425 VALVE, check	1	80	101936 NUT, jam, hex	2
17a	17M388 PACKING, o-ring	1	81	TUBE, air	1
18	17N871 HOSE, air	1		17Y952 120V models	
19	17R093 TUBE, air, sensor	1		17R735 230V models	
20	CONTROL, board, assembly, (includes 21, 88, 90, 91)	1	83	102040 NUT, lock	2
	17R944 Model 17N269		85	186620 LABEL, ground	1
	17R945 Models 17P533, 17P539, 17R081		86*	17R298 FILTER, air, turbine	1
21	108860 SCREW, machine	6	87	17P656 GASKET, wall, inner	1
22	17R058 COVER, back, painted	1	88	17P789 GASKET, board, display	1
23	114064 PLUG, inlet	1	90	17R394 GASKET, barrier, ribbon	1
24	15W998 SCREW, mach, torix	2	91	17R395 GASKET, barrier, ribbon, LED	1
25	17N459 FITTING, barbed, exhaust	1	93	17X783 ISOLATOR	1
26	100639 WASHER, lock	1	94	15Y606 FITTING, barbed	1
27	101448 NUT, jam	1	95	M70394 FITTING, barbed	1
28	102063 WASHER, lock	8	97	17R769 PAD, drawer	1
29	111593 SCREW, grounding	1	98	17S011 TAPE, high temp	1
30	17P294 COVER, front	1	99▲	17R747 LABEL, set, international (not shown)	1
31	17X787 KIT, cover	1	109	17R638 THERMISTOR, harness	1
32	17N390 HANDLE, carry, pivot	1	112	120094 SCREW	2
33	17R608 SCREW, mach, torx pan hd	4	113	FAN	1
34	116969 NUT, lock	4		17S031 Model 17N269	
35	17P302 LABEL, ProComp 9.5	1		17S141 Models 17P533, 17P539, 17R081	
36	129590 SWITCH, power	1	114	109466 NUT, lock	2
37	17N957 KNOB, potentiometer	1	115	17X785 WASHER, nylon	1
38	CIRCUIT BREAKER	1	116	115489 CLAMP	1
	114403 Model 17N269			▲ Replacement Danger and Warning labels, tags, and cards are available at no cost.	
	16A348 Models 17P533, 17P539, 17R081			* Filter Kit 17R298 includes items 40, 44, 86	
39	114689 BUSHING, strain relief	1			
40*	17R298 FILTER, air, motor	1			

Parts - Power Cords & Accessories

Parts - Power Cords & Accessories



t130844a

Parts List - Power Cords & Accessories

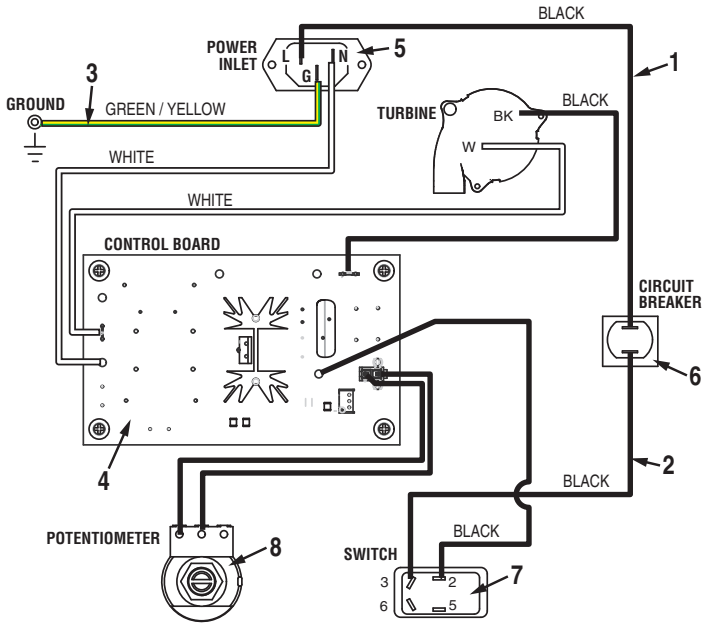
Parts List - Power Cords & Accessories

Ref. Part	Description	Qty	Ref. Part	Description	Qty
1	CORD, power Models 17N263, 17N264, 17N265, 17N266, 17N267, 17N269, 17U105	1	257159	Models 17N265, 17N266, 17N267, 17N269, 17P530, 17P531, 17P532, 17P533, 17P536, 17P537, 17P538, 17P539, 17R078, 17R079, 17R080, 17R081, 17T982	1
	128206 Models 17P528, 17P529, 17P530, 17P531, 17P532, 17P533		7 17R299	KIT, accessory, 4' air hose, whip (not included on all models)	1
	116281 Models 17P534, 17P535, 17P536, 17P537, 17P538, 17P539, 17R074, 17R075, 17R078, 17R079, 17R080, 17R081		8 M70402	FITTING, female, Q.D.	1
	241996 Models 17T980, 17T982		9 17P749	VALVE, ball (not included on all models)	1
2	195551 RETAINER, plug, adapter, Models 17P534, 17P535, 17P536, 17P537, 17P538, 17P539, 17R074, 17R075, 17R078, 17R079, 17R080, 17R081	1	10	GUN	1
	3 242001 CORD, set, adapter, Europe, Models 17P534, 17P535, 17P536, 17P537, 17P538, 17P539, 17R074, 17R075, 17R078, 17R079, 17R080, 17R081	1		17P481 Models 17N263, 17N264, 17P528, 17P529, 17P534, 17P535, 17R074, 17R075, 17T980	
	4 287121 CORD, set, adapter, Italy/Denmark/Switzerland, Models 17P534, 17P535, 17P536, 17P537, 17P538, 17P539	1		17P483 Models 17N265, 17N266, 17N267, 17P530, 17P531, 17P532, 17P536, 17P537, 17P538, 17R078, 17R079, 17R080, 17T982	
	5 242005 CORD, set, adapter, Aus- tralia, Models 17R074, 17R075, 17R078, 17R079, 17R080, 17R081	1		17P654 Models 17N269, 17P533, 17P539, 17R081	
	6 17R300 KIT, accessory, hose, air Models 17N263, 17N264, 17P528, 17P529, 17P534, 17P535, 17R074, 17R075, 17T980	1	11	FLEXLINER	1
				17A226 3 pack	
				17P212 25 pack	
			14	256959 STRAP, remote, cup (Pro- Comp models only)	1
			15	287819 KIT, cup, 2qt, complete (ProComp models only) includes 22	1
			16	17R462 KIT, cup, FlexLiner System (includes 11, 19, 20, 21)	1
			17	17R301 VALVE, air control (includes 8 & 9)	1
			18	240488 HOSE, air, clear, 30 ft (Pro- Comp models only)	1
			19	17P237 RING	1
			20	17P222 COVER	1
			21	193218 STRAINER	1
			22	17T237 HOSE, assembly (Pro-Comp models only)	1

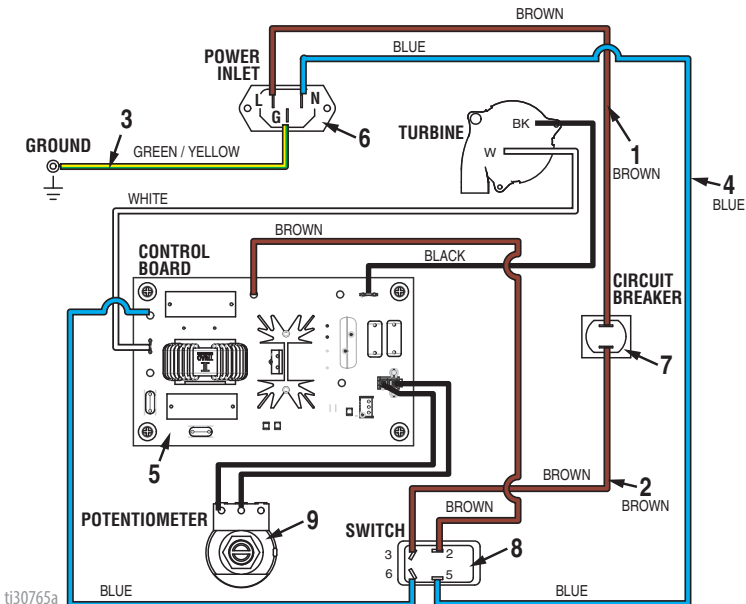
Wiring Diagrams (Standard)

Wiring Diagrams (Standard)

120V WIRING DIAGRAM



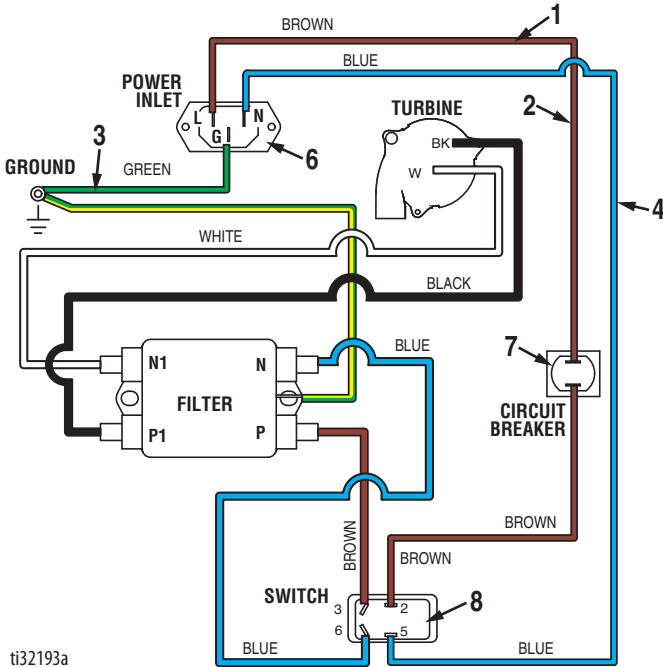
230V WIRING DIAGRAM



ti30765a

Wiring Diagrams (Standard)

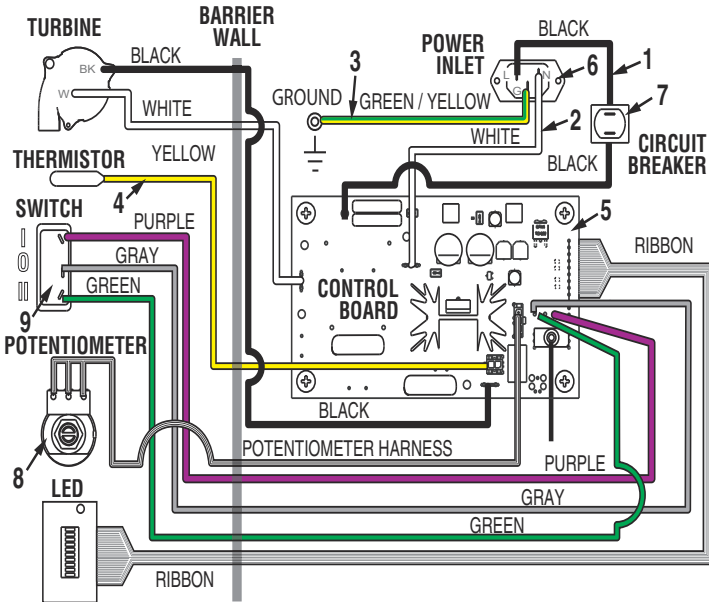
120V UK WIRING DIAGRAM (Model 17T980)



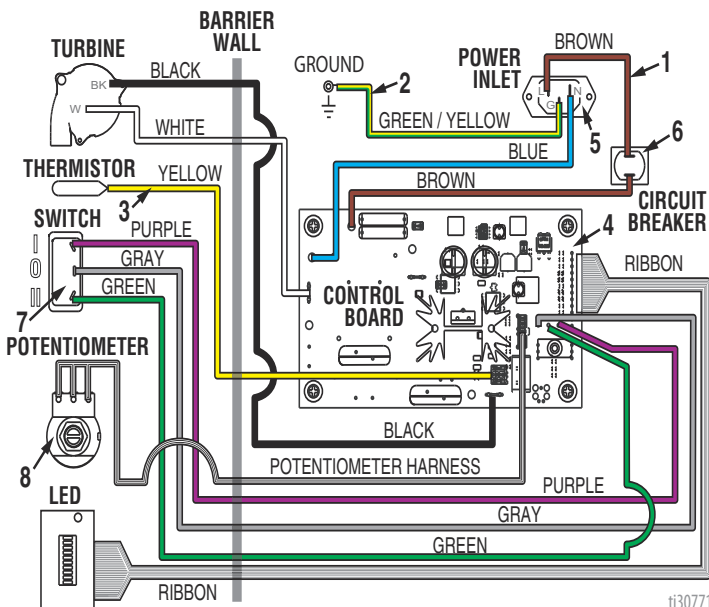
ti32193a

Wiring Diagrams (ProContractor)

120V WIRING DIAGRAM



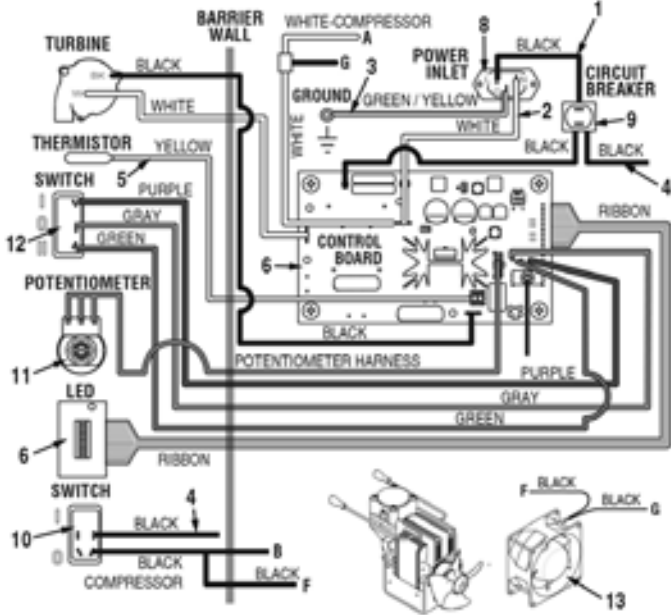
120V UK & 230V WIRING DIAGRAM



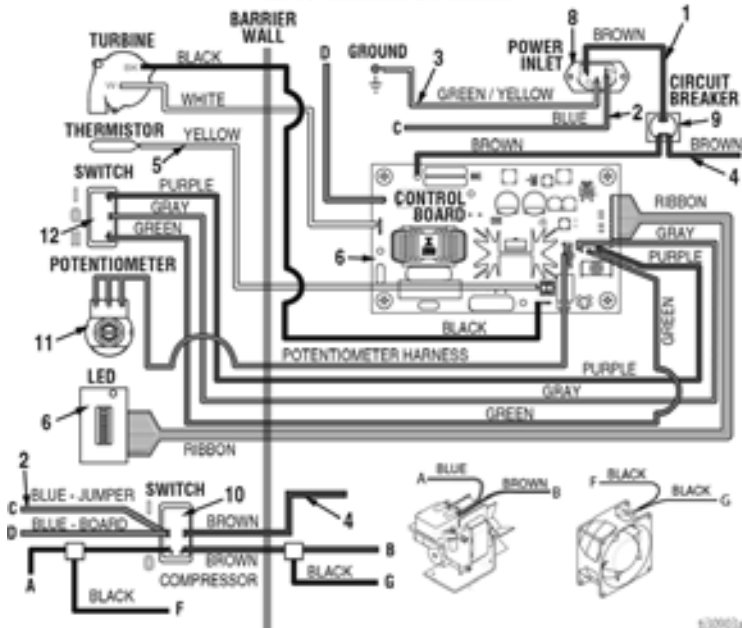
ti30771a

Wiring Diagrams (ProComp)

120V WIRING DIAGRAM



230V WIRING DIAGRAM



Technical Specifications

Technical Specifications

FinishPro HVLP 7.0/9.0 Standard		
	US	Metric
FinishPro 7.0		
Maximum Amperage	11.0	6,0
Watts	1200	
Electrical Power Requirement	120 VAC, 50/60 Hz, 15A	220-240 VAC, 50/60Hz, 10A
Maximum Hose Length	40 ft	12,2 m
Sprayer Weight	18 lb	8,2 kg
Total Weight	24 lb	10,9 kg
Noise* (dBa)		
Sound pressure	82 dBa	
Sound power	94.9 dBa	
FinishPro 9.0		
Maximum Amperage	12.0	6,5
Watts	1300	
Electrical Power Requirement	120 VAC, 50/60 Hz, 15A	220-240 VAC, 50/60Hz, 10A
Maximum Hose Length	60 ft	18,3 m
Sprayer Weight	19 lb	8,6 kg
Total Weight	25 lb	11,3 kg
Noise* (dBa)		
Sound pressure	83.0 dBa	
Sound power	95.9 dBa	
Materials of Construction		
Wetted materials on all models	zinc- and nickel-plated carbon steel, nylon, stainless steel, PTFE, Acetal, leather, UHMWPE, aluminum, tungsten carbide, polyethylene, fluoroelastomer, urethane	
Notes		
*Sound pressure measured 3 feet (1 meter) from equipment. Sound power measured per ISO-3744.		

Technical Specifications

FinishPro HVLP 7.0/9.0/9.5 ProContractor		
	US	Metric
FinishPro 7.0		
Maximum Amperage	11.0	6,0
Watts	1200	
Electrical Power Requirement	120 VAC, 50/60 Hz, 15A	220-240 VAC, 50/60Hz, 10A
Maximum Hose Length	40 ft	12,2 m
Sprayer Weight	23 lb	10,4 kg
Total Weight	33 lb	15,0 kg
Noise* (dBa)		
Sound pressure	82 dBa	
Sound power	94.9 dBa	
FinishPro 9.0		
Maximum Amperage	12.0	6,5
Watts	1300	
Electrical Power Requirement	120 VAC, 50/60 Hz, 15A	220-240 VAC, 50/60Hz, 10A
Maximum Hose Length	60 ft	18,3 m
Sprayer Weight	24 lb	10,9 kg
Total Weight	34 lb	15,4 kg
Noise* (dBa)		
Sound pressure	83.0 dBa	
Sound power	95.9 dBa	
FinishPro 9.5		
Maximum Amperage	13.5	8,0
Watts	1600	
Electrical Power Requirement	120 VAC, 50/60 Hz, 15A	220-240 VAC, 50/60Hz, 10A
Maximum Hose Length	60 ft	18,3 m
Sprayer Weight	26 lb	11,8 kg
Total Weight	36 lb	16,3 kg
Noise* (dBa)		
Sound pressure	83.4 dBa	
Sound power	96.3 dBa	
Materials of Construction		
Wetted materials on all models	zinc- and nickel-plated carbon steel, nylon, stainless steel, PTFE, Acetal, leather, UHMWPE, aluminum, tungsten carbide, polyethylene, fluoroelastomer, urethane	
Notes		
<i>*Sound pressure measured 3 feet (1 meter) from equipment. Sound power measured per ISO-3744.</i>		

Technical Specifications

FinishPro HVLP 9.5 ProComp		
	US	Metric
FinishPro 9.5		
Maximum Amperage	15.0	9,0
Watts	1800	
Electrical Power Requirement	120 VAC, 50/60 Hz, 15A	220-240 VAC, 50Hz, 10A
Maximum Hose Length	60 ft	18,3 m
Sprayer Weight	30 lb	13,6 kg
Total Weight	46 lb	20,9 kg
Noise* (dBa)		
Sound pressure	83.4 dBa	
Sound power	96.3 dBa	
Materials of Construction		
Wetted materials on all models	zinc- and nickel-plated carbon steel, nylon, stainless steel, PTFE, Acetal, leather, UHMWPE, aluminum, tungsten carbide, polyethylene, fluoroelastomer, urethane	
Notes		
<i>*Sound pressure measured 3 feet (1 meter) from equipment. Sound power measured per ISO-3744.</i>		

Graco Standard Warranty

Graco Standard Warranty

Graco warrants all equipment referenced in this document which is manufactured by Graco and bearing its name to be free from defects in material and workmanship on the date of sale to the original purchaser for use. With the exception of any special, extended, or limited warranty published by Graco, Graco will, for a period of twelve months from the date of sale, repair or replace any part of the equipment determined by Graco to be defective. This warranty applies only when the equipment is installed, operated and maintained in accordance with Graco's written recommendations.

This warranty does not cover, and Graco shall not be liable for general wear and tear, or any malfunction, damage or wear caused by faulty installation, misapplication, abrasion, corrosion, inadequate or improper maintenance, negligence, accident, tampering, or substitution of non-Graco component parts. Nor shall Graco be liable for malfunction, damage or wear caused by the incompatibility of Graco equipment with structures, accessories, equipment or materials not supplied by Graco, or the improper design, manufacture, installation, operation or maintenance of structures, accessories, equipment or materials not supplied by Graco.

This warranty is conditioned upon the prepaid return of the equipment claimed to be defective to an authorized Graco distributor for verification of the claimed defect. If the claimed defect is verified, Graco will repair or replace free of charge any defective parts. The equipment will be returned to the original purchaser transportation prepaid. If inspection of the equipment does not disclose any defect in material or workmanship, repairs will be made at a reasonable charge, which charges may include the costs of parts, labor, and transportation.

THIS WARRANTY IS EXCLUSIVE, AND IS IN LIEU OF ANY OTHER WARRANTIES, EXPRESS OR IMPLIED, INCLUDING BUT NOT LIMITED TO WARRANTY OF MERCHANTABILITY OR WARRANTY OF FITNESS FOR A PARTICULAR PURPOSE.

Graco's sole obligation and buyer's sole remedy for any breach of warranty shall be as set forth above. The buyer agrees that no other remedy (including, but not limited to, incidental or consequential damages for lost profits, lost sales, injury to person or property, or any other incidental or consequential loss) shall be available. Any action for breach of warranty must be brought within two (2) years of the date of sale.

GRACO MAKES NO WARRANTY, AND DISCLAIMS ALL IMPLIED WARRANTIES OF MERCHANTABILITY AND FITNESS FOR A PARTICULAR PURPOSE, IN CONNECTION WITH ACCESSORIES, EQUIPMENT, MATERIALS OR COMPONENTS SOLD BUT NOT MANUFACTURED BY GRACO. These items sold, but not manufactured by Graco (such as electric motors, switches, hose, etc.), are subject to the warranty, if any, of their manufacturer. Graco will provide purchaser with reasonable assistance in making any claim for breach of these warranties.

In no event will Graco be liable for indirect, incidental, special or consequential damages resulting from Graco supplying equipment hereunder, or the furnishing, performance, or use of any products or other goods sold hereto, whether due to a breach of contract, breach of warranty, the negligence of Graco, or otherwise.

FOR GRACO CANADA CUSTOMERS

The Parties acknowledge that they have required that the present document, as well as all documents, notices and legal proceedings entered into, given or instituted pursuant hereto or relating directly or indirectly hereto, be drawn up in English. Les parties reconnaissent avoir convenu que la rédaction du présent document sera en Anglais, ainsi que tous documents, avis et procédures judiciaires exécutés, donnés ou intentés, à la suite de ou en rapport, directement ou indirectement, avec les procédures concernées.

Graco Information

For the latest information about Graco products, visit www.graco.com.

For patent information, see www.graco.com/patents.

TO PLACE AN ORDER, contact your Graco distributor or call 1-800-690-2894 to identify the nearest distributor.

All written and visual data contained in this document reflects the latest product information available at the time of publication.

Graco reserves the right to make changes at any time without notice.

Original instructions. This manual contains English. MM 3A4967

Graco Headquarters: Minneapolis

International Offices: Belgium, China, Japan, Korea

GRACO INC. AND SUBSIDIARIES • P.O. BOX 1441 • MINNEAPOLIS MN 55440-1441 • USA

Copyright 2014, Graco Inc. All Graco manufacturing locations are registered to ISO 9001.

www.graco.com
Revision E, May 2019