



Sleep  
Sample Matrix:  
CBD/HEMP  
Derivative Products  
(Ingestion)



License No. 800025015  
FL License # CMTL-0003  
CLIA No. 10D1094068

# Certificate of Analysis

## Compliance Test

**Sivan CBD LLC**  
PO BOX 378  
Point Lookout, New York 11569

Batch # BK-22-011  
Batch Date: 2022-02-11

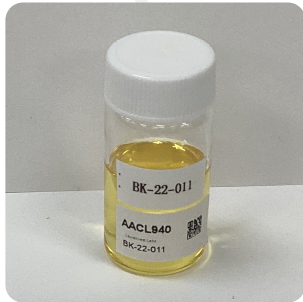
Sampling Method: MSP 7.3.1  
Test Reg State: Florida

Production Date: 2022-02-11

Order # LAU220211-020001  
Order Date: 2022-02-11  
Sample # AACL940

Sampling Date: 2022-02-14  
Lab Batch Date: 2022-02-14  
Completion Date: 2022-02-19

Initial Gross Weight: 27.878 g  
Density: 0.9486 g/ml



Product Image

Potency  
Tested

Heavy Metals  
Passed

Mycotoxins  
Passed

Pesticides  
Passed

Residual  
Solvents  
Passed

Pathogenic  
Passed

Microbiology  
Petrifilm  
Passed

### Potency 22 (LCUV)

Specimen Weight: 198.390 mg

Tested (LCUV)

Analyte	Dilution (1:n)	LOD (%)	LOQ (%)	Result (mg/ml)	(%)
CBD	100.000	0.000054	0.0015	35.6389	3.7570
CBN	10.000	0.000014	0.0015	10.2639	1.0820
CBG	10.000	0.000248	0.0015	6.8935	0.7267
CBC	10.000	0.000018	0.0015	0.8489	0.0895
CBT	10.000	0.0002	0.0015	0.3506	0.0370
CBDV	10.000	0.000065	0.0015	0.2730	0.0288
Delta-9 THC	10.000	0.000013	0.0015	0.1034	0.0109
CBNA	10.000	0.000095	0.0015	<LOQ	<LOQ
CBL	10.000	0.000035	0.0015	<LOQ	<LOQ
CBDA	10.000	0.00001	0.0015	<LOQ	<LOQ
CBDVA	10.000	0.000014	0.0015	<LOQ	<LOQ
CBGA	10.000	0.00008	0.0015	<LOQ	<LOQ
THCV	10.000	0.000007	0.0015	<LOQ	<LOQ
THCVA	10.000	0.000047	0.0015	<LOQ	<LOQ
THCA-A	10.000	0.000032	0.0015	<LOQ	<LOQ
Exo-THC	10.000	0.00023	0.0015	<LOQ	<LOQ
Delta-9 THCO-Acetate	10.000	0.000077	0.0003	<LOQ	<LOQ
CBCA	10.000	0.000107	0.0015	<LOQ	<LOQ
Delta-8 THC-O-Acetate	10.000	0.000027	0.0003	<LOQ	<LOQ
Delta-8 THC	10.000	0.000026	0.0015	<LOQ	<LOQ
Delta-10 THC	10.000	0.000003	0.0015	<LOQ	<LOQ
Delta-8 THCV	10.000	0.00004	0.0015	<LOQ	<LOQ

### Potency Summary

Total THC 0.011%	Total CBD 3.757%
Total CBG 0.727%	Total CBN 1.082%
Other Cannabinoids 0.155%	Total Cannabinoids 5.732%

Xueli Gao  
Ph.D., DABT  
Lab Toxicologist

Aixia Sun  
D.H.Sc., M.Sc., B.Sc., MT (AAB)  
Lab Director/Principal Scientist



Definitions and Abbreviations used in this report: \*Total CBD = CBD + (CBD-A \* 0.877), \*Total CBDV = CBDV + (CBDVA \* 0.87), \*Total THC = THCA-A \* 0.877 + Delta 9 THC, \*Total THCV = THCV + (THCVA \* 0.87), \*CBG Total = (CBGA \* 0.877) + CBG, \*CBN Total = (CBNA \* 0.877) + CBN, \*Total CBC = CBC + (CBCA \* 0.877), \*Total THC-O-Acetate = Delta 8 THC-O-Acetate + Delta 9 THC-O-Acetate, \*Other Cannabinoids Total = Total Cannabinoids - All the listed cannabinoids on the summary section, \*Total Detected Cannabinoids = Delta8-THC + Total CBN + CBT + Delta8-THCV + Total CBG + Total CBD + Total THCV + CBL + Total THC + Total CBC + Total CBDV + Delta10-THC + Total THC-O-Acetate, \*Analyte Details above show the Dry Weight Concentrations unless specified as 12% moisture concentration. (mg/ml) = Milligrams per Milliliter, LOQ = Limit of Quantitation, LOD = Limit of Detection, Dilution = Dilution Factor (ppb) = Parts per Billion, (%) = Percent, (cfu/g) = Colony Forming Unit per Gram (cfu/g) = Colony Forming Unit per Gram, , LOD = Limit of Detection, (µg/g) = Microgram per Gram (ppm) = Parts per Million, (ppm) = (µg/g), (aw) = aw (area ratio) = Area Ratio, (mg/Kg) = Milligram per Kilogram, \*Measurement of Uncertainty = +/- 10%



This report shall not be reproduced, without written approval, from ACS Laboratory. The results of this report relate only to the material or product analyzed. Test results are confidential unless explicitly waived otherwise. Accredited by a third-party accrediting body as a competent testing laboratory pursuant to ISO/IEC 17025 of the International Organization for Standardization.



License No. 800025015  
FL License # CMTL-0003  
CLIA No. 10D1094068

# Certificate of Analysis

Compliance Test

**Sivan CBD LLC**  
PO BOX 378  
Point Lookout, New York 11569

Batch # BK-22-011  
Batch Date: 2022-02-11

Sampling Method: MSP 7.3.1  
Test Reg State: Florida

Production Date: 2022-02-11

Order # LAU220211-020001  
Order Date: 2022-02-11  
Sample # AACL940

Sampling Date: 2022-02-14  
Lab Batch Date: 2022-02-14  
Completion Date: 2022-02-19

Initial Gross Weight: 27.878 g  
Density: 0.9486 g/ml

## Pesticides FL V4

Specimen Weight: 171.000 mg  
Dilution Factor: 8.772

Analyte	LOQ (ppb)	Action Level (ppb)	Result (ppb)	Analyte	LOQ (ppb)	Action Level (ppb)	Result (ppb)
Abamectin	28.23	300	<LOQ	Fludioxonil	48	3000	<LOQ
Acephate	30	3000	<LOQ	Hexythiazox	30	2000	<LOQ
Acequinocyl	48	2000	<LOQ	Imazalil	30	100	<LOQ
Acetamiprid	30	3000	<LOQ	Imidacloprid	30	3000	<LOQ
Aldicarb	30	100	<LOQ	Kresoxim Methyl	30	1000	<LOQ
Azoxystrobin	10	3000	<LOQ	Malathion	30	2000	<LOQ
Bifenazate	30	3000	<LOQ	Metaxyl	10	3000	<LOQ
Bifenthrin	30	500	<LOQ	Methiocarb	30	100	<LOQ
Boscalid	10	3000	<LOQ	Methomyl	30	100	<LOQ
Captan	30	3000	<LOQ	methyl-Parathion	10	100	<LOQ
Carbaryl	10	500	<LOQ	Mevinphos	10	100	<LOQ
Carbofuran	10	100	<LOQ	Myclobutanil	30	3000	<LOQ
Chlorantraniliprole	10	3000	<LOQ	Naled	30	500	<LOQ
Chlordane	10	100	<LOQ	Oxamyl	30	500	<LOQ
Chlorfenapyr	30	100	<LOQ	Paclotbutrazol	30	100	<LOQ
Chloromequat Chloride	10	3000	<LOQ	Pentachloronitrobenzene	10	200	<LOQ
Chlorpyrifos	30	100	<LOQ	Permethrin	30	1000	<LOQ
Clofentezine	30	500	<LOQ	Phosmet	30	200	<LOQ
Coumaphos	48	100	<LOQ	Piperonylbutoxide	30	3000	<LOQ
Cyfluthrin	30	1000	<LOQ	Prallethrin	30	400	<LOQ
Cypermethrin	30	1000	<LOQ	Propiconazole	30	1000	<LOQ
Daminozide	30	100	<LOQ	Propoxur	30	100	<LOQ
Diazinon	30	200	<LOQ	Pyrethrins	30	1000	<LOQ
Dichlorvos	30	100	<LOQ	Pyridaben	30	3000	<LOQ
Dimethoate	30	100	<LOQ	Spinetoram	10	3000	<LOQ
Dimethomorph	48	3000	<LOQ	Spinosad	30	3000	<LOQ
Ethoprophos	30	100	<LOQ	Spiromesifen	30	3000	<LOQ
Etofenprox	30	100	<LOQ	Spirotetramat	30	3000	<LOQ
Etoxazole	30	1500	<LOQ	Spiroxamine	30	100	<LOQ
Fenhexamid	10	3000	<LOQ	Tebuconazole	30	1000	<LOQ
Fenoxycarb	30	100	<LOQ	Thiacloprid	30	100	<LOQ
Fenpyroximate	30	2000	<LOQ	Thiamethoxam	30	1000	<LOQ
Fipronil	30	100	<LOQ	Trifloxystrobin	30	3000	<LOQ
Fonicamid	30	2000	<LOQ				

## Passed (LCMS/GCMS)

## Residual Solvents - FL (CBD)

Specimen Weight: 111.000 mg  
Dilution Factor: 50.000

Analyte	LOQ (ppm)	Action Level (ppm)	Result (ppm)	Analyte	LOQ (ppm)	Action Level (ppm)	Result (ppm)
1,1-Dichloroethene	0.16	8	ND	Heptane	1.39	5000	ND
1,2-Dichloroethane	0.04	5	ND	Hexane	1.17	290	ND
Acetone	2.08	5000	ND	Isopropyl alcohol	1.39	500	ND
Acetonitrile	1.17	410	ND	Methanol	0.69	3000	ND
Benzene	0.02	2	ND	Methylene chloride	2.43	600	ND
Butanes	2.5	2000	ND	Pentane	2.08	5000	ND
Chloroform	0.04	60	ND	Propane	5.83	2100	ND
Ethanol	2.78	5000	ND	Toluene	2.92	890	ND
Ethyl Acetate	1.11	5000	ND	Total Xylenes	2.92	2170	ND
Ethyl Ether	1.39	5000	ND	Trichloroethylene	0.49	80	ND
Ethylene Oxide	0.1	5	ND				

## Passed (GCMS)

## Mycotoxins

Specimen Weight: 171.000 mg  
Dilution Factor: 8.772

Analyte	LOQ (ppb)	Action Level (ppb)	Result (ppb)	Analyte	LOQ (ppb)	Action Level (ppb)	Result (ppb)
Aflatoxin B1	6	20	<LOQ	Aflatoxin G2	6	20	<LOQ
Aflatoxin B2	6	20	<LOQ	Ochratoxin A	12	20	<LOQ
Aflatoxin G1	6	20	<LOQ				

## Passed (LCMS)

## Heavy Metals

Specimen Weight: 251.300 mg  
Dilution Factor: 198

Analyte	LOQ (ppb)	Action Level (ppb)	Result (ppb)	Analyte	LOQ (ppb)	Action Level (ppb)	Result (ppb)
Arsenic (As)	100	1500	<LOQ	Lead (Pb)	100	500	<LOQ
Cadmium (Cd)	100	500	<LOQ	Mercury (Hg)	100	3000	<LOQ

## Passed (ICP-MS)

Xueli Gao  
Ph.D., DABT  
Lab Toxicologist

Aixia Sun  
D.H.Sc., M.Sc., B.Sc., MT (AAB)  
Lab Director/Principal Scientist



Definitions and Abbreviations used in this report: \*Total CBD = CBD + (CBD-A \* 0.877), \*Total CBDV = CBDV + (CBDVA \* 0.87), \*Total THC = THCA-A \* 0.877 + Delta 9 THC, \*Total THCV = THCV + (THCVA \* 0.87), \*CBG Total = (CBGA \* 0.877) + CBG, \*CBN Total = (CBNA \* 0.877) + CBN, \*Total CBC = CBC + (CBCA \* 0.877), \*Total THC-O-Acetate = Delta 8 THC-O-Acetate + Delta 9 THC-O-Acetate, \*Other Cannabinoids Total = Total Cannabinoids - All the listed cannabinoids on the summary section, \*Total Detected Cannabinoids = Delta8-THC + Total CBN + CBT + Delta8-THCV + Total CBG + Total CBD + Total THCV + CBL + Total THC + Total CBDV + Total CBDV + Delta10-THC + Total THC-O-Acetate, \*Analyte Details above show the Dry Weight Concentrations unless specified as 12% moisture concentration. (mg/ml) = Milligrams per Milliliter, LOQ = Limit of Quantitation, LOD = Limit of Detection, Dilution = Dilution Factor (ppb) = Parts per Billion, (%) = Percent, (cfu/g) = Colony Forming Unit per Gram (cfu/g) = Colony Forming Unit per Gram, , LOD = Limit of Detection, (µg/g) = Microgram per Gram (ppm) = Parts per Million, (ppm) = (µg/g), (aw) = aw (area ratio) = Area Ratio, (mg/Kg) = Milligram per Kilogram, \*Measurement of Uncertainty = +/- 10%

This report shall not be reproduced, without written approval, from ACS Laboratory. The results of this report relate only to the material or product analyzed. Test results are confidential unless explicitly waived otherwise. Accredited by a third-party accrediting body as a competent testing laboratory pursuant to ISO/IEC 17025 of the International Organization for Standardization.



License No. 800025015  
FL License # CMTL-0003  
CLIA No. 10D1094068

# Certificate of Analysis

Compliance Test

**Sivan CBD LLC**  
PO BOX 378  
Point Lookout, New York 11569

Batch # BK-22-011  
Batch Date: 2022-02-11

Sampling Method: MSP 7.3.1  
Test Reg State: Florida

Production Date: 2022-02-11

Order # LAU220211-020001  
Order Date: 2022-02-11  
Sample # AACL940

Sampling Date: 2022-02-14  
Lab Batch Date: 2022-02-14  
Completion Date: 2022-02-19

Initial Gross Weight: 27.878 g  
Density: 0.9486 g/ml

Pathogenic SE (qPCR)			Passed (qPCR)		
Specimen Weight: 263.500 mg					
Dilution Factor: 1.000					
Analyte	Action Level (cfu/g)	Result (cfu/g)	Analyte	Action Level (cfu/g)	Result (cfu/g)
E.Coli	1	Absence in 1g	Salmonella	1	Absence in 1g

Microbiology (Petrifilm)			Passed (Petrifilm)			
Specimen Weight: 1003.100 mg						
Dilution Factor: 100.000						
Analyte	LOQ (cfu/g)	Action Level (cfu/g)	Result (cfu/g)	LOQ (cfu/g)	Action Level (cfu/g)	Result (cfu/g)
Aerobic Bacteria	10	1000	500.000	10	100	<10
Yeast/Mold						

*Xueli Gao*  
Xueli Gao  
Ph.D., DABT  
Lab Toxicologist

*Aixia Sun*  
Aixia Sun  
D.H.Sc., M.Sc., B.Sc., MT (AAB)  
Lab Director/Principal Scientist



Definitions and Abbreviations used in this report: \*Total CBD = CBD + (CBD-A \* 0.877), \*Total CBDV = CBDV + (CBDVA \* 0.87), \*Total THC = THCA-A \* 0.877 + Delta 9 THC, \*Total THCV = THCV + (THCVA \* 0.87), \*CBG Total = (CBGA \* 0.877) + CBG, \*CBN Total = (CBNA \* 0.877) + CBN, \*Total CBC = CBC + (CBCA \* 0.877), \*Total THC-O-Acetate = Delta 8 THC-O-Acetate + Delta 9 THC-O-Acetate, \*Other Cannabinoids Total = Total Cannabinoids - All the listed cannabinoids on the summary section, \*Total Detected Cannabinoids = Delta8-THC + Total CBN + CBT + Delta8-THCV + Total CBG + Total CBD + Total THCV + CBL + Total THC + Total CBC + Total CBDV + Delta10-THC + Total THC-O-Acetate, \*Analyte Details above show the Dry Weight Concentrations unless specified as 12% moisture concentration. (mg/ml) = Milligrams per Milliliter, LOQ = Limit of Quantitation, LOD = Limit of Detection, Dilution = Dilution Factor (ppb) = Parts per Billion, (%) = Percent, (cfu/g) = Colony Forming Unit per Gram (cfu/g) = Colony Forming Unit per Gram, LOD = Limit of Detection, (µg/g) = Microgram per Gram (ppm) = Parts per Million, (ppm) = (µg/g), (aw) = aw (area ratio) = Area Ratio, (mg/Kg) = Milligram per Kilogram, \*Measurement of Uncertainty = +/- 10%

This report shall not be reproduced, without written approval, from ACS Laboratory. The results of this report relate only to the material or product analyzed. Test results are confidential unless explicitly waived otherwise. Accredited by a third-party accrediting body as a competent testing laboratory pursuant to ISO/IEC 17025 of the International Organization for Standardization.