



License No. 800025015
FL License # CMTL-0003
CLIA No. 10D1094068

Certificate of Analysis

Compliance Test

Sivan CBD LLC
PO BOX 378
Point Lookout, New York 11569

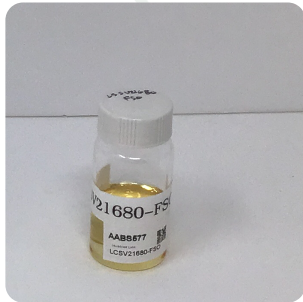
Batch # LCSV21680-FSO
Batch Date: 2021-08-03
Extracted From: Hemp

Test Reg State: Florida

Order # LAU210804-030008
Order Date: 2021-08-04
Sample # AABS577

Sampling Date: 2021-08-08
Lab Batch Date: 2021-08-08
Completion Date: 2021-08-16

Initial Gross Weight: 27.155 g
Density: .9486 g/ml



Product Image

Potency Tested	Terpenes Tested	Heavy Metals Passed	Mycotoxins Passed	Pesticides Passed
Residual Solvents Passed	Pathogenic Microbiology Passed	Listeria Monocytogenes Passed		

Potency - 20

Specimen Weight: 84.370 mg

Analyte	Dilution (1:n)	LOD (%)	LOQ (%)	Result (mg/ml)	(%)
CBD	10.000	0.000054	0.001	39.376	4.151
CBN	10.000	0.000014	0.001	9.960	1.050
CBG	10.000	0.000248	0.001	7.709	0.813
CBC	10.000	0.000018	0.001	1.692	0.178
Delta-9 THC	10.000	0.000013	0.001	1.566	0.165
CBT	10.000	0.0002	0.001	0.927	0.098
CBNA	10.000	0.000095	0.001	<LOQ	<LOQ
CBDA	10.000	0.00001	0.001	<LOQ	<LOQ
CBDV	10.000	0.000065	0.001	<LOQ	<LOQ
CBDVA	10.000	0.000014	0.001	<LOQ	<LOQ
CBGA	10.000	0.000008	0.001	<LOQ	<LOQ
THCV	10.000	0.000047	0.001	<LOQ	<LOQ
CBL	10.000	0.000035	0.001	<LOQ	<LOQ
THCA-A	10.000	0.000007	0.001	<LOQ	<LOQ
THCA	10.000	0.000032	0.001	<LOQ	<LOQ
Exo-THC	10.000	0.00023	0.001	<LOQ	<LOQ
CBCA	10.000	0.000107	0.001	<LOQ	<LOQ
Delta-8 THC	10.000	0.000026	0.001	<LOQ	<LOQ
Delta-10 THC	10.000	0.000003	0.001	<LOQ	<LOQ
Delta-8 THCV	10.000	0.00004	0.001	<LOQ	<LOQ

Tested (HPLC)

Potency Summary

Total THC 0.165%	Total CBD 4.151%
Total CBG 0.813%	Total CBN 1.050%
Other Cannabinoids 0.276%	Total Cannabinoids 6.455%

Terpenes Summary

Analyte	Result (mg/g)	(%)
alpha-Bisabolol	9.506	0.951%
Hexahydrothymol	6.899	0.69%
Eucalyptol	1.432	0.143%
trans-Caryophyllene	1.128	0.113%
(R)-(+)-Limonene	1.092	0.109%
Linalool	0.762	0.076%
beta-Pinene	0.276	0.028%

Total Terpenes: 2.110%

Detailed Terpenes Analysis is on the following page

Xueli Gao
Xueli Gao
Ph.D., DABT
Lab Toxicologist

Aixia Sun
Aixia Sun
D.H.Sc., M.Sc., B.Sc., MT (AAB)
Lab Director/Principal Scientist



Definitions and Abbreviations used in this report: *Total CBD = CBD + (CBD-A * 0.877), *Total THC = THCA-A * 0.877 + Delta 9 THC, *CBG Total = (CBGA * 0.877) + CBG, *CBN Total = (CBNA * 0.877) + CBN, *Other Cannabinoids Total = CBC + CBDV + THCV + THCV-A, *Total Detected Cannabinoids = CBD Total + CBG Total + CBN Total + THC Total + CBC + CBDV + THCV + THCV-A, *Analyte Details above show the Dry Weight Concentrations unless specified as 12% moisture concentration. (mg/ml) = Milligrams per Milliliter, LOQ = Limit of Quantitation, LOD = Limit of Detection, Dilution = Dilution Factor (ppb) = Parts per Billion, (%) = Percent, (cfu/g) = Colony Forming Unit per Gram (cfu/g) = Colony Forming Unit per Gram, , LOD = Limit of Detection, (µg/g) = Microgram per Gram (ppm) = Parts per Million, (ppm) = (µg/g), (aw) = aw (area ratio) = Area Ratio, (mg/Kg) = Milligram per Kilogram, *Measurement of Uncertainty = +/- 5%

This report shall not be reproduced, without written approval, from ACS Laboratory. The results of this report relate only to the material or product analyzed. Test results are confidential unless explicitly waived otherwise. Accredited by a third-party accrediting body as a competent testing laboratory pursuant to ISO/IEC 17025 of the International Organization for Standardization.





License No. 800025015
FL License # CMTL-0003
CLIA No. 10D1094068

Certificate of Analysis

Compliance Test

Sivan CBD LLC
PO BOX 378
Point Lookout, New York 11569

Batch # LCSV21680-FSO
Batch Date: 2021-08-03
Extracted From: Hemp

Test Reg State: Florida

Order # LAU210804-030008
Order Date: 2021-08-04
Sample # AABS577

Sampling Date: 2021-08-08
Lab Batch Date: 2021-08-08
Completion Date: 2021-08-16

Initial Gross Weight: 27.155 g
Density: .9486 g/ml



Terpenes - FL

Specimen Weight: 84.370 mg
Dilution Factor: 20.000

Tested
(GC/GCMS)

Analyte	LOQ (%)	Result (mg/g)	(%)	Analyte	LOQ (%)	Result (mg/g)	(%)
alpha-Bisabolol	0.02	9.506	0.951	Hexahydrothymol	0.02	6.899	0.690
Eucalyptol	0.02	1.432	0.143	trans-Caryophyllene	0.02	1.128	0.113
(R)-(+)-Limonene	0.02	1.092	0.109	Linalool	0.02	0.762	0.076
beta-Pinene	0.02	0.276	0.028	(+)-Cedrol	0.02	<LOQ	<LOQ
Geranyl acetate	0.02	<LOQ	<LOQ	Guaiol	0.02	<LOQ	<LOQ
Isoborneol	0.02	<LOQ	<LOQ	Isopulegol	0.02	<LOQ	<LOQ
Nerol	0.02	<LOQ	<LOQ	Ocimene	0.014	<LOQ	<LOQ
Pulegone	0.02	<LOQ	<LOQ	Sabinene	0.02	<LOQ	<LOQ
Sabinene Hydrate	0.02	<LOQ	<LOQ	Terpinolene	0.02	<LOQ	<LOQ
Total Terpeneol	0.02	<LOQ	<LOQ	trans-Nerolidol	0.02	<LOQ	<LOQ
Geraniol	0.02	<LOQ	<LOQ	Fenchone	0.02	<LOQ	<LOQ
Gamma-Terpinene	0.02	<LOQ	<LOQ	3-Carene	0.02	<LOQ	<LOQ
alpha-Cedrene	0.02	<LOQ	<LOQ	alpha-Humulene	0.02	<LOQ	<LOQ
alpha-Phellandrene	0.02	<LOQ	<LOQ	alpha-Pinene	0.02	<LOQ	<LOQ
alpha-Terpinene	0.02	<LOQ	<LOQ	Fenchyl Alcohol	0.02	<LOQ	<LOQ
beta-Myrcene	0.02	<LOQ	<LOQ	Borneol	0.04	<LOQ	<LOQ
Camphene	0.02	<LOQ	<LOQ	Camphors	0.04	<LOQ	<LOQ
Caryophyllene oxide	0.02	<LOQ	<LOQ	cis-Nerolidol	0.02	<LOQ	<LOQ
Farnesene	0.02	<LOQ	<LOQ	Valencene	0.02	<LOQ	<LOQ

Total Terpenes: 2.110%

Xueli Gao
Xueli Gao
Ph.D., DABT
Lab Toxicologist

Aixia Sun
Aixia Sun
D.H.Sc., M.Sc., B.Sc., MT (AAB)
Lab Director/Principal Scientist



Definitions and Abbreviations used in this report: *Total CBD = CBD + (CBD-A * 0.877), *Total THC = THCA-A * 0.877 + Delta 9 THC, *CBG Total = (CBGA * 0.877) + CBG, *CBN Total = (CBNA * 0.877) + CBN, *Other Cannabinoids Total = CBC + CBDV + THCV + THCV-A, *Total Detected Cannabinoids = CBD Total + CBG Total + CBN Total + THC Total + CBC + CBDV + THCV + THCV-A, *Analyte Details above show the Dry Weight Concentrations unless specified as 12% moisture concentration. (mg/ml) = Milligrams per Milliliter, LOQ = Limit of Quantitation, LOD = Limit of Detection, Dilution = Dilution Factor (ppb) = Parts per Billion, (%) = Percent, (cfu/g) = Colony Forming Unit per Gram (cfu/g) = Colony Forming Unit per Gram, , LOD = Limit of Detection, (µg/g) = Microgram per Gram (ppm) = Parts per Million, (ppm) = (µg/g), (aw) = aw (area ratio) = Area Ratio, (mg/Kg) = Milligram per Kilogram, *Measurement of Uncertainty = +/- 5%



This report shall not be reproduced, without written approval, from ACS Laboratory. The results of this report relate only to the material or product analyzed. Test results are confidential unless explicitly waived otherwise. Accredited by a third-party accrediting body as a competent testing laboratory pursuant to ISO/IEC 17025 of the International Organization for Standardization.



License No. 800025015
FL License # CMTL-0003
CLIA No. 10D1094068

Certificate of Analysis

Compliance Test

Sivan CBD LLC
PO BOX 378
Point Lookout, New York 11569

Batch # LCSV21680-FSO
Batch Date: 2021-08-03
Extracted From: Hemp

Test Reg State: Florida

Order # LAU210804-030008
Order Date: 2021-08-04
Sample # AABS577

Sampling Date: 2021-08-08
Lab Batch Date: 2021-08-08
Completion Date: 2021-08-16

Initial Gross Weight: 27.155 g
Density: .9486 g/ml

Heavy Metals

Specimen Weight: 252.930 mg

Dilution Factor: 2.000

Analyte	LOQ (ppb)	Action Level (ppb)	Result (ppb)	Analyte	LOQ (ppb)	Action Level (ppb)	Result (ppb)
Arsenic (As)	100	1500	<LOQ	Cadmium (Cd)	100	500	<LOQ
Lead (Pb)	100	500	<LOQ	Mercury (Hg)	100	3000	<LOQ

Passed
(ICP-MS)

Mycotoxins

Specimen Weight: 157.100 mg

Dilution Factor: 9.548

Analyte	LOQ (ppb)	Action Level (ppb)	Result (ppb)	Analyte	LOQ (ppb)	Action Level (ppb)	Result (ppb)
Aflatoxin B1	6	20	<LOQ	Aflatoxin B2	6	20	<LOQ
Aflatoxin G1	6	20	<LOQ	Aflatoxin G2	6	20	<LOQ
Ochratoxin A	12	20	<LOQ				

Passed
(LCMS)

Xueli Gao
Xueli Gao
Ph.D., DABT
Lab Toxicologist

Aixia Sun
Aixia Sun
D.H.Sc., M.Sc., B.Sc., MT (AAB)
Lab Director/Principal Scientist



Definitions and Abbreviations used in this report: *Total CBD = CBD + (CBD-A * 0.877), *Total THC = THCA-A * 0.877 + Delta 9 THC, *CBG Total = (CBGA * 0.877) + CBG, *CBN Total = (CBNA * 0.877) + CBN, *Other Cannabinoids Total = CBC + CBDV + THCV + THCV-A, *Total Detected Cannabinoids = CBD Total + CBG Total + CBN Total + THC Total + CBC + CBDV + THCV + THCV-A, *Analyte Details above show the Dry Weight Concentrations unless specified as 12% moisture concentration. (mg/ml) = Milligrams per Milliliter, LOQ = Limit of Quantitation, LOD = Limit of Detection, Dilution = Dilution Factor (ppb) = Parts per Billion, (%) = Percent, (cfu/g) = Colony Forming Unit per Gram (cfu/g) = Colony Forming Unit per Gram, , LOD = Limit of Detection, (µg/g) = Microgram per Gram (ppm) = Parts per Million, (ppm) = (µg/g), (aw) = aw (area ratio) = Area Ratio, (mg/Kg) = Milligram per Kilogram, *Measurement of Uncertainty = +/- 5%



This report shall not be reproduced, without written approval, from ACS Laboratory. The results of this report relate only to the material or product analyzed. Test results are confidential unless explicitly waived otherwise. Accredited by a third-party accrediting body as a competent testing laboratory pursuant to ISO/IEC 17025 of the International Organization for Standardization.



License No. 800025015
FL License # CMTL-0003
CLIA No. 10D1094068

Certificate of Analysis

Compliance Test

Sivan CBD LLC
PO BOX 378
Point Lookout, New York 11569

Batch # LCSV21680-FSO
Batch Date: 2021-08-03
Extracted From: Hemp

Test Reg State: Florida

Order # LAU210804-030008
Order Date: 2021-08-04
Sample # AABS577

Sampling Date: 2021-08-08
Lab Batch Date: 2021-08-08
Completion Date: 2021-08-16

Initial Gross Weight: 27.155 g
Density: .9486 g/ml

Pesticides FL V4 **Passed**
(LCMS/GCMS)
Specimen Weight: 157.100 mg
Dilution Factor: 9.548

Analyte	LOQ (ppb)	Action Level (ppb)	Result (ppb)	Analyte	LOQ (ppb)	Action Level (ppb)	Result (ppb)
Abamectin	28.23	300	<LOQ	Acephate	30	3000	<LOQ
Acequinocyl	48	2000	<LOQ	Acetamiprid	30	3000	<LOQ
Aldicarb	30	100	<LOQ	Azoxystrobin	10	3000	<LOQ
Bifenazate	30	3000	<LOQ	Bifenthrin	30	500	<LOQ
Boscalid	10	3000	<LOQ	Captan	30	3000	<LOQ
Carbaryl	10	500	<LOQ	Carbofuran	10	100	<LOQ
Chlorantraniliprole	10	3000	<LOQ	Chlordane	10	100	<LOQ
Chlorfenapyr	30	100	<LOQ	Chloromequat Chloride	10	3000	<LOQ
Chlorpyrifos	30	100	<LOQ	Clofentezine	30	500	<LOQ
Coumaphos	48	100	<LOQ	Cyfluthrin	30	1000	<LOQ
Cypermethrin	30	1000	<LOQ	Daminozide	30	100	<LOQ
Diazinon	30	200	<LOQ	Dichlorvos	30	100	<LOQ
Dimethoate	30	100	<LOQ	Dimethomorph	48	3000	<LOQ
Ethoprophos	30	100	<LOQ	Etofenprox	30	100	<LOQ
Etoxazole	30	1500	<LOQ	Fenhexamid	10	3000	<LOQ
Fenoxycarb	30	100	<LOQ	Fenpyroximate	30	2000	<LOQ
Fipronil	30	100	<LOQ	Fonicamid	30	2000	<LOQ
Fludioxonil	48	3000	<LOQ	Hexythiazox	30	2000	<LOQ
Imazalil	30	100	<LOQ	Imidacloprid	30	3000	<LOQ
Kresoxim Methyl	30	1000	<LOQ	Malathion	30	2000	<LOQ
Metalaxyl	10	3000	<LOQ	Methiocarb	30	100	<LOQ
Methomyl	30	100	<LOQ	methyl-Parathion	10	100	<LOQ
Mevinphos	10	100	<LOQ	Myclobutanil	30	3000	<LOQ
Naled	30	500	<LOQ	Oxamyl	30	500	<LOQ
Paclotrazol	30	100	<LOQ	Pentachloronitrobenzene	10	200	<LOQ
Permethrin	30	1000	<LOQ	Phosmet	30	200	<LOQ
Piperonylbutoxide	30	3000	<LOQ	Prallethrin	30	400	<LOQ
Propiconazole	30	1000	<LOQ	Propoxur	30	100	<LOQ
Pyrethrins	30	1000	<LOQ	Pyridaben	30	3000	<LOQ
Spinetoram	10	3000	<LOQ	Spinosad	30	3000	<LOQ
Spiromesifen	30	3000	<LOQ	Spirotetramat	30	3000	<LOQ
Spiroxamine	30	100	<LOQ	Tebuconazole	30	1000	<LOQ
Thiacloprid	30	100	<LOQ	Thiamethoxam	30	1000	<LOQ
Trifloxystrobin	30	3000	<LOQ				

Xueli Gao
Xueli Gao
Ph.D., DABT
Lab Toxicologist

Aixia Sun
Aixia Sun
D.H.Sc., M.Sc., B.Sc., MT (AAB)
Lab Director/Principal Scientist



Definitions and Abbreviations used in this report: *Total CBD = CBD + (CBD-A * 0.877), *Total THC = THCA-A * 0.877 + Delta 9 THC, *CBG Total = (CBGA * 0.877) + CBG, *CBN Total = (CBNA * 0.877) + CBN, *Other Cannabinoids Total = CBC + CBDV + THCV + THCV-A, *Total Detected Cannabinoids = CBD Total + CBG Total + CBN Total + THC Total + CBC + CBDV + THCV + THCV-A, *Analyte Details above show the Dry Weight Concentrations unless specified as 12% moisture concentration. (mg/ml) = Milligrams per Milliliter, LOQ = Limit of Quantitation, LOD = Limit of Detection, Dilution = Dilution Factor (ppb) = Parts per Billion, (%) = Percent, (cfu/g) = Colony Forming Unit per Gram (cfu/g) = Colony Forming Unit per Gram, , LOD = Limit of Detection, (µg/g) = Microgram per Gram (ppm) = Parts per Million, (ppm) = (µg/g), (aw) = aw (area ratio) = Area Ratio, (mg/Kg) = Milligram per Kilogram, *Measurement of Uncertainty = +/- 5%



This report shall not be reproduced, without written approval, from ACS Laboratory. The results of this report relate only to the material or product analyzed. Test results are confidential unless explicitly waived otherwise. Accredited by a third-party accrediting body as a competent testing laboratory pursuant to ISO/IEC 17025 of the International Organization for Standardization.



License No. 800025015
FL License # CMTL-0003
CLIA No. 10D1094068

Certificate of Analysis

Compliance Test

Sivan CBD LLC
PO BOX 378
Point Lookout, New York 11569

Batch # LCSV21680-FSO
Batch Date: 2021-08-03
Extracted From: Hemp

Test Reg State: Florida

Order # LAU210804-030008
Order Date: 2021-08-04
Sample # AABS577

Sampling Date: 2021-08-08
Lab Batch Date: 2021-08-08
Completion Date: 2021-08-16

Initial Gross Weight: 27.155 g
Density: .9486 g/ml

Residual Solvents - FL (CBD) **Passed**
(GCMS)

Specimen Weight: 11.900 mg
Dilution Factor: 1.000

Analyte	LOQ (ppm)	Action Level (ppm)	Result (ppm)	Analyte	LOQ (ppm)	Action Level (ppm)	Result (ppm)
Acetone	2.08	5000	ND	Benzene	0.02	2	ND
Butanes	2.5	2000	ND	Ethanol	2.78	5000	ND
Ethyl Acetate	1.11	5000	ND	Heptane	1.39	5000	ND
Hexane	1.17	290	ND	Isopropyl alcohol	1.39	500	ND
Methanol	0.69	3000	ND	Pentane	2.08	5000	ND
Propane	5.83	2100	ND	Toluene	2.92	890	ND
Total Xylenes	2.92	2170	ND				

Pathogenic Microbiology - SE (MicroArray) **Passed**
(Micro Array)

Specimen Weight: 1025.700 mg
Dilution Factor: 1.000

Analyte	Result (cfu/g)	Analyte	Result (cfu/g)
Salmonella	Absence in 1g	STEC E. Coli	Absence in 1g

Xueli Gao
Xueli Gao
Ph.D., DABT
Lab Toxicologist

Aixia Sun
Aixia Sun
D.H.Sc., M.Sc., B.Sc., MT (AAB)
Lab Director/Principal Scientist



Definitions and Abbreviations used in this report: *Total CBD = CBD + (CBD-A * 0.877), *Total THC = THCA-A * 0.877 + Delta 9 THC, *CBG Total = (CBGA * 0.877) + CBG, *CBN Total = (CBNA * 0.877) + CBN, *Other Cannabinoids Total = CBC + CBDV + THCV + THCV-A, *Total Detected Cannabinoids = CBD Total + CBG Total + CBN Total + THC Total + CBC + CBDV + THCV + THCV-A, *Analyte Details above show the Dry Weight Concentrations unless specified as 12% moisture concentration. (mg/ml) = Milligrams per Milliliter, LOQ = Limit of Quantitation, LOD = Limit of Detection, Dilution = Dilution Factor (ppb) = Parts per Billion, (%) = Percent, (cfu/g) = Colony Forming Unit per Gram (cfu/g) = Colony Forming Unit per Gram, , LOD = Limit of Detection, (µg/g) = Microgram per Gram (ppm) = Parts per Million, (ppm) = (µg/g), (aw) = aw (area ratio) = Area Ratio, (mg/Kg) = Milligram per Kilogram, *Measurement of Uncertainty = +/- 5%

This report shall not be reproduced, without written approval, from ACS Laboratory. The results of this report relate only to the material or product analyzed. Test results are confidential unless explicitly waived otherwise. Accredited by a third-party accrediting body as a competent testing laboratory pursuant to ISO/IEC 17025 of the International Organization for Standardization.



License No. 800025015
FL License # CMTL-0003
CLIA No. 10D1094068

Certificate of Analysis

Compliance Test

Sivan CBD LLC
PO BOX 378
Point Lookout, New York 11569

Batch # LCSV21680-FSO
Batch Date: 2021-08-03
Extracted From: Hemp

Test Reg State: Florida

Order # LAU210804-030008
Order Date: 2021-08-04
Sample # AABS577

Sampling Date: 2021-08-08
Lab Batch Date: 2021-08-08
Completion Date: 2021-08-16

Initial Gross Weight: 27.155 g
Density: .9486 g/ml



Listeria Monocytogenes

Specimen Weight: 992.400 mg

Dilution Factor: 1.000

Passed
(qPCR)

Analyte	Action Level (cfu/g)	Result
Listeria Monocytogenes	1	Absence in 1g

Xueli Gao
Xueli Gao
Ph.D., DABT
Lab Toxicologist

Aixia Sun
Aixia Sun
D.H.Sc., M.Sc., B.Sc., MT (AAB)
Lab Director/Principal Scientist



Definitions and Abbreviations used in this report: *Total CBD = CBD + (CBD-A * 0.877), *Total THC = THCA-A * 0.877 + Delta 9 THC, *CBG Total = (CBGA * 0.877) + CBG, *CBN Total = (CBNA * 0.877) + CBN, *Other Cannabinoids Total = CBC + CBDV + THCV + THCV-A, *Total Detected Cannabinoids = CBD Total + CBG Total + CBN Total + THC Total + CBC + CBDV + THCV + THCV-A, *Analyte Details above show the Dry Weight Concentrations unless specified as 12% moisture concentration. (mg/ml) = Milligrams per Milliliter, LOQ = Limit of Quantitation, LOD = Limit of Detection, Dilution = Dilution Factor (ppb) = Parts per Billion, (%) = Percent, (cfu/g) = Colony Forming Unit per Gram (cfu/g) = Colony Forming Unit per Gram, , LOD = Limit of Detection, (µg/g) = Microgram per Gram (ppm) = Parts per Million, (ppm) = (µg/g), (aw) = aw (area ratio) = Area Ratio, (mg/Kg) = Milligram per Kilogram, *Measurement of Uncertainty = +/- 5%



This report shall not be reproduced, without written approval, from ACS Laboratory. The results of this report relate only to the material or product analyzed. Test results are confidential unless explicitly waived otherwise. Accredited by a third-party accrediting body as a competent testing laboratory pursuant to ISO/IEC 17025 of the International Organization for Standardization.