



License No. 800025015
FL License # CMTL-0003
CLIA No. 10D1094068

Certificate of Analysis

Compliance Test

Sivan CBD LLC
PO BOX 378
Point Lookout, New York 11569

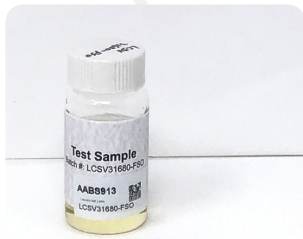
Batch # LCSV31680-FSO
Batch Date: 2021-08-06
Extracted From: Hemp

Sampling Method: MSP 7.3.1
Test Reg State: Florida

Order # LAU210806-010031
Order Date: 2021-08-06
Sample # AABS913

Sampling Date: 2021-08-12
Lab Batch Date: 2021-08-12
Completion Date: 2021-08-18

Initial Gross Weight: 31.417 g
Density: 0.9462 g/ml



Potency
Tested

Terpenes
Tested

Heavy Metals
Passed

Mycotoxins
Passed

Pesticides
Passed

Residual
Solvents
Passed

Pathogenic
Microbiology
Passed

Listeria
Monocytogenes
Passed

Product Image



Potency - 20

Specimen Weight: 95.880 mg

Analyte	Dilution (1:n)	LOD (%)	LOQ (%)	Result (mg/ml)	(%)	
CBD	10.000	0.000054	0.001	24.185	2.556	
CBG	10.000	0.000248	0.001	16.189	1.711	
CBC	10.000	0.000018	0.001	9.869	1.043	
CBN	10.000	0.000014	0.001	5.480	0.579	
Delta-9 THC	10.000	0.000013	0.001	0.864	0.091	
CBT	10.000	0.0002	0.001	0.799	0.084	
CBNA	10.000	0.000095	0.001	0.207	0.022	
CBL	10.000	0.000035	0.001		<LOQ	
CBDA	10.000	0.00001	0.001		<LOQ	
CBDV	10.000	0.000065	0.001		<LOQ	
CBDVA	10.000	0.000014	0.001		<LOQ	
THCV	10.000	0.000007	0.001		<LOQ	
CBGA	10.000	0.00008	0.001		<LOQ	
THCVA	10.000	0.000047	0.001		<LOQ	
THCA-A	10.000	0.000032	0.001		<LOQ	
Exo-THC	10.000	0.00023	0.001		<LOQ	
CBCA	10.000	0.000107	0.001		<LOQ	
Delta-8 THC	10.000	0.000026	0.001		<LOQ	
Delta-10 THC	10.000	0.000003	0.001		<LOQ	
Delta-8 THCV	10.000	0.00004	0.001		<LOQ	

Tested (HPLC)

Potency Summary

Total THC 0.091%	Total CBD 2.556%
Total CBG 1.711%	Total CBN 0.598%
Other Cannabinoids 1.127%	Total Cannabinoids 6.084%

Terpenes Summary

Analyte	Result (mg/g)	(%)
(R)-(+)-Limonene	1.357	0.136%
beta-Myrcene	0.55	0.055%
trans-Caryophyllene	0.342	0.034%
alpha-Bisabolol	0.235	0.023%

Total Terpenes: 0.248%

Detailed Terpenes Analysis is on the following page

Xueli Gao
Ph.D., DABT
Lab Toxicologist

Ailixia Sun
D.H.Sc., M.Sc., B.Sc., MT (AAB)
Lab Director/Principal Scientist



Definitions and Abbreviations used in this report: *Total CBD = CBD + (CBD-A * 0.877), *Total THC = THCA-A * 0.877 + Delta 9 THC, *CBG Total = (CBGA * 0.877) + CBG, *CBN Total = (CBNA * 0.877) + CBN, *Other Cannabinoids Total = CBC + CBDV + THCV + THCVA, *Total Detected Cannabinoids = CBD Total + CBG Total + CBN Total + THC Total + CBC + CBDV + THCV + THCVA, *Analyte Details above show the Dry Weight Concentrations unless specified as 12% moisture concentration. (mg/ml) = Milligrams per Milliliter, LOQ = Limit of Quantitation, LOD = Limit of Detection, Dilution = Dilution Factor (ppb) = Parts per Billion, (%) = Percent, (cfu/g) = Colony Forming Unit per Gram (cfu/g) = Colony Forming Unit per Gram, , LOD = Limit of Detection, (µg/g) = Microgram per Gram (ppm) = Parts per Million, (ppm) = (µg/g), (aw) = aw (area ratio) = Area Ratio, (mg/Kg) = Milligram per Kilogram, *Measurement of Uncertainty = +/- 5%

This report shall not be reproduced, without written approval, from ACS Laboratory. The results of this report relate only to the material or product analyzed. Test results are confidential unless explicitly waived otherwise. Accredited by a third-party accrediting body as a competent testing laboratory pursuant to ISO/IEC 17025 of the International Organization for Standardization.





License No. 800025015
FL License # CMTL-0003
CLIA No. 10D1094068

Certificate of Analysis

Compliance Test

Sivan CBD LLC
PO BOX 378
Point Lookout, New York 11569

Batch # LCSV31680-FSO
Batch Date: 2021-08-06
Extracted From: Hemp

Sampling Method: MSP 7.3.1
Test Reg State: Florida

Order # LAU210806-010031
Order Date: 2021-08-06
Sample # AABS913

Sampling Date: 2021-08-12
Lab Batch Date: 2021-08-12
Completion Date: 2021-08-18

Initial Gross Weight: 31.417 g
Density: 0.9462 g/ml



Terpenes - FL

Specimen Weight: 87.840 mg

Dilution Factor: 20.000

Tested
(GC/GCMS)

Analyte	LOQ (%)	Result (mg/g)	(%)	Analyte	LOQ (%)	Result (mg/g)	(%)
(R)-(+)-Limonene	0.02	1.357	0.136	beta-Myrcene	0.02	0.550	0.055
trans-Caryophyllene	0.02	0.342	0.034	alpha-Bisabolol	0.02	0.235	0.023
Geraniol	0.02	<LOQ		Geranyl acetate	0.02	<LOQ	
Guaiol	0.02	<LOQ		Hexahydrothymol	0.02	<LOQ	
Isoborneol	0.02	<LOQ		Isopulegol	0.02	<LOQ	
Linalool	0.02	<LOQ		Nerol	0.02	<LOQ	
(+)-Cedrol	0.02	<LOQ		Ocimene	0.014	<LOQ	
Sabinene	0.02	<LOQ		Sabinene Hydrate	0.02	<LOQ	
Terpinolene	0.02	<LOQ		Total Terpeneol	0.02	<LOQ	
trans-Nerolidol	0.02	<LOQ		Pulegone	0.02	<LOQ	
Fenchone	0.02	<LOQ		Gamma-Terpinene	0.02	<LOQ	
3-Carene	0.02	<LOQ		alpha-Cedrene	0.02	<LOQ	
alpha-Humulene	0.02	<LOQ		alpha-Phellandrene	0.02	<LOQ	
alpha-Pinene	0.02	<LOQ		alpha-Terpinene	0.02	<LOQ	
beta-Pinene	0.02	<LOQ		Fenchyl Alcohol	0.02	<LOQ	
Borneol	0.04	<LOQ		Camphene	0.02	<LOQ	
Camphors	0.04	<LOQ		Caryophyllene oxide	0.02	<LOQ	
cis-Nerolidol	0.02	<LOQ		Eucalyptol	0.02	<LOQ	
Farnesene	0.02	<LOQ		Valencene	0.02	<LOQ	

Total Terpenes: 0.248%

Xueli Gao
Xueli Gao
Ph.D., DABT
Lab Toxicologist

Aixia Sun
Aixia Sun
D.H.Sc., M.Sc., B.Sc., MT (AAB)
Lab Director/Principal Scientist



Definitions and Abbreviations used in this report: *Total CBD = CBD + (CBD-A * 0.877), *Total THC = THCA-A * 0.877 + Delta 9 THC, *CBG Total = (CBGA * 0.877) + CBG, *CBN Total = (CBNA * 0.877) + CBN, *Other Cannabinoids Total = CBC + CBDV + THCV + THCV-A, *Total Detected Cannabinoids = CBD Total + CBG Total + CBN Total + THC Total + CBC + CBDV + THCV + THCV-A, *Analyte Details above show the Dry Weight Concentrations unless specified as 12% moisture concentration. (mg/ml) = Milligrams per Milliliter, LOQ = Limit of Quantitation, LOD = Limit of Detection, Dilution = Dilution Factor (ppb) = Parts per Billion, (%) = Percent, (cfu/g) = Colony Forming Unit per Gram (cfu/g) = Colony Forming Unit per Gram, , LOD = Limit of Detection, (µg/g) = Microgram per Gram (ppm) = Parts per Million, (ppm) = (µg/g), (aw) = aw (area ratio) = Area Ratio, (mg/Kg) = Milligram per Kilogram, *Measurement of Uncertainty = +/- 5%



This report shall not be reproduced, without written approval, from ACS Laboratory. The results of this report relate only to the material or product analyzed. Test results are confidential unless explicitly waived otherwise. Accredited by a third-party accrediting body as a competent testing laboratory pursuant to ISO/IEC 17025 of the International Organization for Standardization.



License No. 800025015
FL License # CMTL-0003
CLIA No. 10D1094068

Certificate of Analysis

Compliance Test

Sivan CBD LLC
PO BOX 378
Point Lookout, New York 11569

Batch # LCSV31680-FSO
Batch Date: 2021-08-06
Extracted From: Hemp

Sampling Method: MSP 7.3.1
Test Reg State: Florida

Order # LAU210806-010031
Order Date: 2021-08-06
Sample # AABS913

Sampling Date: 2021-08-12
Lab Batch Date: 2021-08-12
Completion Date: 2021-08-18

Initial Gross Weight: 31.417 g
Density: 0.9462 g/ml

Heavy Metals

Specimen Weight: 250.000 mg

Dilution Factor: 2.000

Passed
(ICP-MS)

Analyte	LOQ (ppb)	Action Level (ppb)	Result (ppb)	Analyte	LOQ (ppb)	Action Level (ppb)	Result (ppb)
Arsenic (As)	100	1500	<LOQ	Cadmium (Cd)	100	500	<LOQ
Lead (Pb)	100	500	<LOQ	Mercury (Hg)	100	3000	<LOQ

Mycotoxins

Specimen Weight: 169.700 mg

Dilution Factor: 8.839

Passed
(LCMS)

Analyte	LOQ (ppb)	Action Level (ppb)	Result (ppb)	Analyte	LOQ (ppb)	Action Level (ppb)	Result (ppb)
Aflatoxin B1	6	20	<LOQ	Aflatoxin B2	6	20	<LOQ
Aflatoxin G1	6	20	<LOQ	Aflatoxin G2	6	20	<LOQ
Ochratoxin A	12	20	<LOQ				

Xueli Gao
Xueli Gao
Ph.D., DABT
Lab Toxicologist

Aixia Sun
Aixia Sun
D.H.Sc., M.Sc., B.Sc., MT (AAB)
Lab Director/Principal Scientist



Definitions and Abbreviations used in this report: *Total CBD = CBD + (CBD-A * 0.877), *Total THC = THCA-A * 0.877 + Delta 9 THC, *CBG Total = (CBGA * 0.877) + CBG, *CBN Total = (CBNA * 0.877) + CBN, *Other Cannabinoids Total = CBC + CBDV + THCV + THCV-A, *Total Detected Cannabinoids = CBD Total + CBG Total + CBN Total + THC Total + CBC + CBDV + THCV + THCV-A, *Analyte Details above show the Dry Weight Concentrations unless specified as 12% moisture concentration. (mg/ml) = Milligrams per Milliliter, LOQ = Limit of Quantitation, LOD = Limit of Detection, Dilution = Dilution Factor (ppb) = Parts per Billion, (%) = Percent, (cfu/g) = Colony Forming Unit per Gram (cfu/g) = Colony Forming Unit per Gram, , LOD = Limit of Detection, (µg/g) = Microgram per Gram (ppm) = Parts per Million, (ppm) = (µg/g), (aw) = aw (area ratio) = Area Ratio, (mg/Kg) = Milligram per Kilogram, *Measurement of Uncertainty = +/- 5%



This report shall not be reproduced, without written approval, from ACS Laboratory. The results of this report relate only to the material or product analyzed. Test results are confidential unless explicitly waived otherwise. Accredited by a third-party accrediting body as a competent testing laboratory pursuant to ISO/IEC 17025 of the International Organization for Standardization.



License No. 800025015
FL License # CMTL-0003
CLIA No. 10D1094068

Certificate of Analysis

Compliance Test

Sivan CBD LLC
PO BOX 378
Point Lookout, New York 11569

Batch # LCSV31680-FSO
Batch Date: 2021-08-06
Extracted From: Hemp

Sampling Method: MSP 7.3.1
Test Reg State: Florida

Order # LAU210806-010031
Order Date: 2021-08-06
Sample # AABS913

Sampling Date: 2021-08-12
Lab Batch Date: 2021-08-12
Completion Date: 2021-08-18

Initial Gross Weight: 31.417 g
Density: 0.9462 g/ml

Pesticides FL V4
Specimen Weight: 169.700 mg
Dilution Factor: 8.839

Passed
(LCMS/GCMS)

Analyte	LOQ (ppb)	Action Level (ppb)	Result (ppb)	Analyte	LOQ (ppb)	Action Level (ppb)	Result (ppb)
Abamectin	28.23	300	<LOQ	Acephate	30	3000	<LOQ
Acequinocyl	48	2000	<LOQ	Acetamiprid	30	3000	<LOQ
Aldicarb	30	100	<LOQ	Azoxystrobin	10	3000	<LOQ
Bifenazate	30	3000	<LOQ	Bifenthrin	30	500	<LOQ
Boscalid	10	3000	<LOQ	Captan	30	3000	<LOQ
Carbaryl	10	500	<LOQ	Carbofuran	10	100	<LOQ
Chlorantraniliprole	10	3000	<LOQ	Chlordane	10	100	<LOQ
Chlorfenapyr	30	100	<LOQ	Chloromequat Chloride	10	3000	<LOQ
Chlorpyrifos	30	100	<LOQ	Clofentezine	30	500	<LOQ
Coumaphos	48	100	<LOQ	Cyfluthrin	30	1000	<LOQ
Cypermethrin	30	1000	<LOQ	Daminozide	30	100	<LOQ
Diazinon	30	200	<LOQ	Dichlorvos	30	100	<LOQ
Dimethoate	30	100	<LOQ	Dimethomorph	48	3000	<LOQ
Ethoprophos	30	100	<LOQ	Etofenprox	30	100	<LOQ
Etoxazole	30	1500	<LOQ	Fenhexamid	10	3000	<LOQ
Fenoxycarb	30	100	<LOQ	Fenpyroximate	30	2000	<LOQ
Fipronil	30	100	<LOQ	Fonicamid	30	2000	<LOQ
Fludioxonil	48	3000	<LOQ	Hexythiazox	30	2000	<LOQ
Imazalil	30	100	<LOQ	Imidacloprid	30	3000	<LOQ
Kresoxim Methyl	30	1000	<LOQ	Malathion	30	2000	<LOQ
Metalaxyl	10	3000	<LOQ	Methiocarb	30	100	<LOQ
Methomyl	30	100	<LOQ	methyl-Parathion	10	100	<LOQ
Mevinphos	10	100	<LOQ	Myclobutanil	30	3000	<LOQ
Naled	30	500	<LOQ	Oxamyl	30	500	<LOQ
Paclotrazol	30	100	<LOQ	Pentachloronitrobenzene	10	200	<LOQ
Permethrin	30	1000	<LOQ	Phosmet	30	200	<LOQ
Piperonylbutoxide	30	3000	<LOQ	Prallethrin	30	400	<LOQ
Propiconazole	30	1000	<LOQ	Propoxur	30	100	<LOQ
Pyrethrins	30	1000	<LOQ	Pyridaben	30	3000	<LOQ
Spinetoram	10	3000	<LOQ	Spinosad	30	3000	<LOQ
Spiromesifen	30	3000	<LOQ	Spirotetramat	30	3000	<LOQ
Spiroxamine	30	100	<LOQ	Tebuconazole	30	1000	<LOQ
Thiacloprid	30	100	<LOQ	Thiamethoxam	30	1000	<LOQ
Trifloxystrobin	30	3000	<LOQ				

Xueli Gao
Xueli Gao
Ph.D., DABT
Lab Toxicologist

Aixia Sun
Aixia Sun
D.H.Sc., M.Sc., B.Sc., MT (AAB)
Lab Director/Principal Scientist



Definitions and Abbreviations used in this report: *Total CBD = CBD + (CBD-A * 0.877), *Total THC = THCA-A * 0.877 + Delta 9 THC, *CBG Total = (CBGA * 0.877) + CBG, *CBN Total = (CBNA * 0.877) + CBN, *Other Cannabinoids Total = CBC + CBDV + THCV + THCV-A, *Total Detected Cannabinoids = CBD Total + CBG Total + CBN Total + THC Total + CBC + CBDV + THCV + THCV-A, *Analyte Details above show the Dry Weight Concentrations unless specified as 12% moisture concentration. (mg/ml) = Milligrams per Milliliter, LOQ = Limit of Quantitation, LOD = Limit of Detection, Dilution = Dilution Factor (ppb) = Parts per Billion, (%) = Percent, (cfu/g) = Colony Forming Unit per Gram (cfu/g) = Colony Forming Unit per Gram, , LOD = Limit of Detection, (µg/g) = Microgram per Gram (ppm) = Parts per Million, (ppm) = (µg/g), (aw) = aw (area ratio) = Area Ratio, (mg/Kg) = Milligram per Kilogram, *Measurement of Uncertainty = +/- 5%



This report shall not be reproduced, without written approval, from ACS Laboratory. The results of this report relate only to the material or product analyzed. Test results are confidential unless explicitly waived otherwise. Accredited by a third-party accrediting body as a competent testing laboratory pursuant to ISO/IEC 17025 of the International Organization for Standardization.



License No. 800025015
FL License # CMTL-0003
CLIA No. 10D1094068

Certificate of Analysis

Compliance Test

Sivan CBD LLC
PO BOX 378
Point Lookout, New York 11569

Batch # LCSV31680-FSO
Batch Date: 2021-08-06
Extracted From: Hemp

Sampling Method: MSP 7.3.1
Test Reg State: Florida

Order # LAU210806-010031
Order Date: 2021-08-06
Sample # AABS913

Sampling Date: 2021-08-12
Lab Batch Date: 2021-08-12
Completion Date: 2021-08-18

Initial Gross Weight: 31.417 g
Density: 0.9462 g/ml

Residual Solvents - FL (CBD) Passed (GCMS)

Specimen Weight: 12.400 mg
Dilution Factor: 1.000

Analyte	LOQ (ppm)	Action Level (ppm)	Result (ppm)	Analyte	LOQ (ppm)	Action Level (ppm)	Result (ppm)
Acetone	2.08	5000	ND	Benzene	0.02	2	ND
Butanes	2.5	2000	ND	Ethanol	2.78	5000	ND
Ethyl Acetate	1.11	5000	ND	Heptane	1.39	5000	ND
Hexane	1.17	290	ND	Isopropyl alcohol	1.39	500	ND
Methanol	0.69	3000	ND	Pentane	2.08	5000	ND
Propane	5.83	2100	ND	Toluene	2.92	890	ND
Total Xylenes	2.92	2170	ND				

Pathogenic Microbiology - SE (MicroArray) Passed (Micro Array)

Specimen Weight: 1001.220 mg
Dilution Factor: 1.000

Analyte	Result (cfu/g)	Analyte	Result (cfu/g)
Salmonella	Absence in 1g	STEC E. Coli	Absence in 1g

Xueli Gao
Xueli Gao
Ph.D., DABT
Lab Toxicologist

Aixia Sun
Aixia Sun
D.H.Sc., M.Sc., B.Sc., MT (AAB)
Lab Director/Principal Scientist



Definitions and Abbreviations used in this report: *Total CBD = CBD + (CBD-A * 0.877), *Total THC = THCA-A * 0.877 + Delta 9 THC, *CBG Total = (CBGA * 0.877) + CBG, *CBN Total = (CBNA * 0.877) + CBN, *Other Cannabinoids Total = CBC + CBDV + THCV + THCV-A, *Total Detected Cannabinoids = CBD Total + CBG Total + CBN Total + THC Total + CBC + CBDV + THCV + THCV-A, *Analyte Details above show the Dry Weight Concentrations unless specified as 12% moisture concentration. (mg/ml) = Milligrams per Milliliter, LOQ = Limit of Quantitation, LOD = Limit of Detection, Dilution = Dilution Factor (ppb) = Parts per Billion, (%) = Percent, (cfu/g) = Colony Forming Unit per Gram (cfu/g) = Colony Forming Unit per Gram, , LOD = Limit of Detection, (µg/g) = Microgram per Gram (ppm) = Parts per Million, (ppm) = (µg/g), (aw) = aw (area ratio) = Area Ratio, (mg/Kg) = Milligram per Kilogram, *Measurement of Uncertainty = +/- 5%



This report shall not be reproduced, without written approval, from ACS Laboratory. The results of this report relate only to the material or product analyzed. Test results are confidential unless explicitly waived otherwise. Accredited by a third-party accrediting body as a competent testing laboratory pursuant to ISO/IEC 17025 of the International Organization for Standardization.



License No. 800025015
FL License # CMTL-0003
CLIA No. 10D1094068

Certificate of Analysis

Compliance Test

Sivan CBD LLC
PO BOX 378
Point Lookout, New York 11569

Batch # LCSV31680-FSO
Batch Date: 2021-08-06
Extracted From: Hemp

Sampling Method: MSP 7.3.1
Test Reg State: Florida

Order # LAU210806-010031
Order Date: 2021-08-06
Sample # AABS913

Sampling Date: 2021-08-12
Lab Batch Date: 2021-08-12
Completion Date: 2021-08-18

Initial Gross Weight: 31.417 g
Density: 0.9462 g/ml



Listeria Monocytogenes

Specimen Weight: 1008.900 mg

Dilution Factor: 1.000

Passed
(qPCR)

Analyte	Action Level (cfu/g)	Result
Listeria Monocytogenes	1	Absence in 1g

Xueli Gao
Xueli Gao
Ph.D., DABT
Lab Toxicologist

Aixia Sun
Aixia Sun
D.H.Sc., M.Sc., B.Sc., MT (AAB)
Lab Director/Principal Scientist



Definitions and Abbreviations used in this report: *Total CBD = CBD + (CBD-A * 0.877), *Total THC = THCA-A * 0.877 + Delta 9 THC, *CBG Total = (CBGA * 0.877) + CBG, *CBN Total = (CBNA * 0.877) + CBN, *Other Cannabinoids Total = CBC + CBDV + THCV + THCV-A, *Total Detected Cannabinoids = CBD Total + CBG Total + CBN Total + THC Total + CBC + CBDV + THCV + THCV-A, *Analyte Details above show the Dry Weight Concentrations unless specified as 12% moisture concentration. (mg/ml) = Milligrams per Milliliter, LOQ = Limit of Quantitation, LOD = Limit of Detection, Dilution = Dilution Factor (ppb) = Parts per Billion, (%) = Percent, (cfu/g) = Colony Forming Unit per Gram (cfu/g) = Colony Forming Unit per Gram, , LOD = Limit of Detection, (µg/g) = Microgram per Gram (ppm) = Parts per Million, (ppm) = (µg/g), (aw) = aw (area ratio) = Area Ratio, (mg/Kg) = Milligram per Kilogram, *Measurement of Uncertainty = +/- 5%



This report shall not be reproduced, without written approval, from ACS Laboratory. The results of this report relate only to the material or product analyzed. Test results are confidential unless explicitly waived otherwise. Accredited by a third-party accrediting body as a competent testing laboratory pursuant to ISO/IEC 17025 of the International Organization for Standardization.