



WB WILDBEAR

From

A.J.S Fabrications

W B WILDBEAR

A.J.S Fabrications

W B WILDBEAR

The Wildbear™ range from A.J.S Fabrications is at the cutting edge of style, quality and finish, priding itself on being fit for purpose and built to last.

Allowing you the confidence to create a vehicle with individuality and style that will endure the harshest trials that the worlds varied environments can throw at it. The essence of Wildbear™ will enhance your Land Rover and leave a lasting impression with the manufacturing excellence and care that has been taken at every stage of the development of this unique range.

Manufactured with pride in Britain, Wildbear™ has ensured that its range is a class above the rest.

When you buy Wildbear™ you have the confidence that you have bought into a calibre of parts that matches durability of need with conception of a new aesthetically unique style of products, founded by Bearmach and proudly continued by A.J.S Fabrications.

Focus on Finish: Every product in the Wildbear™ range has a strong emphasis on finish. We have listened to dealers and customers, looked at competitor products and wanted to be sure that the Wildbear™ range was tough, strong and lasting. We have focused on quality of the materials selected and the finishes chosen, from galvanising and Rogard 500* zinc pre-treatments. Topped with specialist colour finishes unique to this market whilst ensuring high quality fittings for everything. With Wildbear™ you can trust our warranty and be assured we are focused on a quality finish of product, no matter what terrain you travel upon.

Quality over Quantity: Many companies offer cheaper pricing by stacking products high and cheap. Sourcing from the Far-East and having little or no control over quality, but rather focusing on quantity. At Wildbear™, our focus is reversed; we source all our materials from **British** manufacturers, allowing them to build parts in smaller but more frequent batches meaning greater attention to detail and therefore fantastic quality throughout the range. With high quality control at A.J.S Fabrications, we will only sell what passes our stringent QC checking process.

Fit for Purpose: Wildbear™ is fit for purpose, where ever you should choose to take it. From woodland, to mountains, glens to lakes, dunes in the sunshine to mud pits in the pelting rain. We have tested the range over the past 12 months, taken on board feedback from independent reviewers and ensured the range we have launched is fit for purpose and ready for customers.

Flying the Flag: When Bearmach first developed Wildbear™ they worked alongside great minds and Land Rover enthusiasts to create this range. Here at A.J.S Fabrications we were part of that team and as such will continue to commit to staying with the Bearmach ethos of **British quality**.

So it gives us great joy that all of the Wildbear™ range is sourced from the UK. We only source outside of the UK where it is impossible to find what we need, though we are still working alongside British engineers on design and specification.

Simply the Best.....an unbeatable range of products, with the unique bear logo, its only Wildbear™ if it has the "WB" stamp of approval. Rogard 500 is a zinc coating used extensively in marine applications. Designed to offer in excess of 500 hours salt spray resistance to corrosion.

100% of products
designed and manufactured



	Diff Guard	
Series 3 88" 1971-1984	Front LHD/RHD	LS7603
Series 3 88" 1972-1984	Rear Diff Guard	LS7604
Series 3 109" 1973 - 1984	Rear Salisbury axle	LS7609
Forward control 101 all types	Front Salisbury axle	LS7609
Defender 90 up to 1998	Front LHD Bolt- on	LS7600
Defender 90 1998 on	Front LHD Bolt- on	LS7600A
Defender 90 1998 on	Front LHD	LS7603
Defender 90 up to 1998	Front RHD	LS7601
Defender 90 1998 on	Front RHD	LS7602
Defender 90 up to 1998	Rear Diff Guard	LS7604
Defender 90 1998-2006	Rear LHD/RHD	LS7606
Defender 90 2007 on	Rear LHD/RHD	LS7607
Defender 110 up to 1998	Front LHD Bolt- on	LS7600
Defender 110 1998 on	Front LHD bolt- on	LS7600A
Defender 110 1998 on	Front LHD	LS7603
Defender 110 up to 1998	Front RHD	LS7601
Defender 110 1998 on	Front RHD	LS7602
Defender 110 up to 2002	Rear Diff Guard	LS7609
Defender 110 2003 on	Rear Diff Guard	LS7610
Defender 130 up to 1998	Front LHD Bolt—on	LS7600
Defender 130 1998 on	Front LHD Bolt—on	LS7600A
Defender 130 1998 on	Front LHD	LS 7603
Defender 130 up to 1998	Front RHD	LS7601
Defender 130 1998 on	Front	LS7602
Defender 130 up to 2002	Rear Diff Guard	LS7609
Defender 130 2003 on	Rear Diff Guard	LS7610
Discovery 1 up to 1998	Front LHD Bolt—on	LS7600
Discovery 1 up to 1998	Front LHD	LS7603
Discovery 1 up to 1998	Front RHD	LS7601
Discovery 1 1989-1998	Rear non rubber drive coupling	LS7604
Discovery 1 1994—1998	Rear with rubber drive coupling	LS7605
Discovery 2 1998- 2004	Front LHD/RHD	LS7603
Discovery 2	Front LHD / RHD	LS7600A
Discovery 2 1998-2004	Rear LHD/RHD	LS7608
Range Rover Classic up to 1995	Front LHD Bolt—on	LS7600
Range Rover Classic	Front LHD	LS7603
Range Rover Classic up to 1995	Front RHD	LS7601
Range Rover Classic up to 1995	Rear Diff Guard	LS7604

These guards offer unsurpassed protection for many types of Land Rover axles.

They have been designed to give maximum protection whilst enabling the ability to carry out routine maintenance without removing the guard. Our guards offer superior protection being independently mounted from the diff pan reducing the possibility of impact damage and subsequent oil leaks. The guard also protects the track rod at the rear of the axle.

All guards are zinc plated for corrosion resistance and full fitting instructions and bolt packs are supplied.

Manufactured from 6mm steel the guards are easily mountable with a full fitting kit and instructions included. The rear guards provide protection to the propshaft drive flange, they give a smooth ramp to prevent snagging on rocks and tree stumps at the front of the axle and wrap around the rear of the diff pan to give the same level of protection as the front diff guard.





Steering Guards		
Defender 90	RHD steel zinc 500	LS7578
Defender 90	LHD steel zinc 500	LS7580
Defender	RHD alloy zinc 500 8mm	LS7579
Defender	LHD alloy zinc 500 8mm	LS7581



Underbody Protection:

Steering Guards With radius edges, ventilation holes for added cooling and the Wildbear™ logo that assures quality. Brackets are 5mm steel and come with recovery eyes

All mild steel parts are zinc coated with Regard 500 zinc finish to assure long rust free life.

Transmission Guards: Designed to protect vulnerable transmission, available in either a 4mm steel plate or 6mm N5083 Alloy.

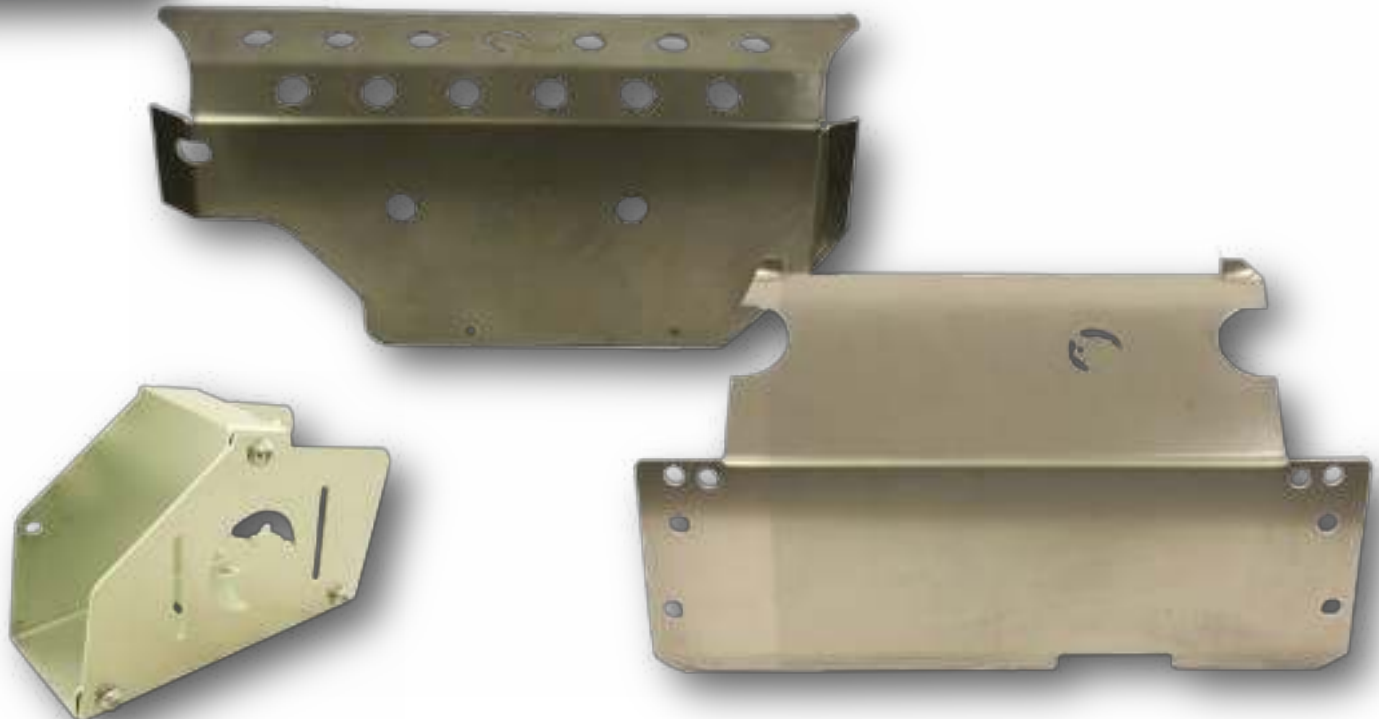
All mild steel parts are zinc coated with Rogard 500 zinc finish to assure a long rust free life.

Tank Guards: Designed to protect fuel tanks from punctures and damage when driving off-road or in harsh environments, available in either a 4mm steel plate or 6mm N5083 alloy. All mild steel parts are zinc coated with Rogard 500 zinc finish to assure a long rust free life.

Images are for illustration, actual product may vary slightly in finish.

Fuel Tank Guard		
Defender 90 pre Td5	Steel Zinc 500	LS7582
Defender 90 pre Td5	N8 Alloy	LS7583
Defender 90 Td5/Tdci	Steel Zinc 500	LS7584
Defender 90 Td5/Tdci	N8 Alloy	LS7585
Defender 110/130 pre Td5	Steel Zinc 500	LS7586
Defender 110/130 pre Td5	Aluminium	LS7587
Defender 110 Td5/Tdci	Steel Zinc 500	LS7588
Defender 110 Td5/Tdci	Aluminium	LS7589
Discovery 2	Steel Zinc 500	LS7594
Discovery 2	Aluminium	LS7595

Fuel Cooler Guard		
Defender 2007		LS7561



	Gearbox Guard	
Defender 110 Td5/Tdci	Steel Zinc 500	LS7590
Defender 110 Td5/Tdci	Aluminium	LS7592
Defender 110 Tdci	Steel Zinc 500	LS7591
Defender 110 Tdci	Aluminium	LS7593
Discovery 2 V8	Steel Zinc	LS7596
Discovery 2 V8	Aluminium N8	LS7597
Discovery 2 Td5	Steel Zinc 500	LS7598
Discovery 2 Td5	Aluminium N8	LS7599

Underbody 'triple' System

The unique Wildbear™ underbody Discovery 3 & 4 system comes in 3 sections, steering, sump and transmission guards protect the essential underbody of your vehicle.

This triple system allows customers to buy and fit in stages to spread the cost.

Steering Guards are produced from 8mm N5083 sheet aluminium

Sump & Transferbox Guards are produced from 6mm N5083 sheet aluminium

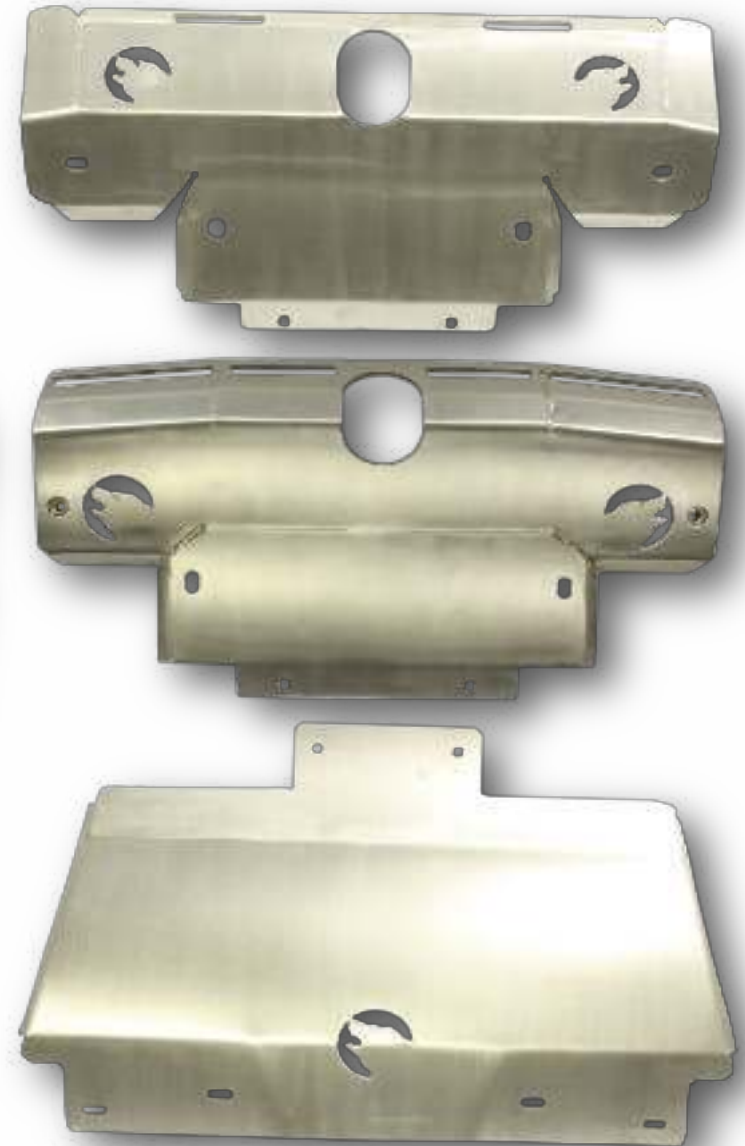
All are bent and welded with a beautiful powder coated finish.

	Sump guard (Alloy)	
Discovery 3	Sump Guard (Alloy)	LS7564
Discovery 4	Sump Guard (Alloy)	LS7564

	Steering guard (Alloy)	
Discovery 3	Steering Guard (Alloy)	LS7562
Discovery 4	Steering Guard (Alloy)	LS7563



(Alloy)	Transmission Guard	
Discovery 3	Transmission Guard (Alloy)	LS7565
Discovery 4	Transmission Guard (Alloy)	LS7565



Rock and Treesliders for Discovery 3 & 4:

For gentle and occasional green laning use. Wildbear™ offers customers a 6mm N5083 Alloy black powdercoated finish sill cover to protect the body from occasional scratches and dents.

For heavier duty offroad protection the 5mm plate steel treeslider option has 2" tubular bars ready for whatever the terrain throws. Shot blasted, zinc coated and finished with a tough black powdercoat for a superior finish.

Made to last.



Rock and Tree Sliders for Defender:

These unique 75mm diameter tubular Rock Sliders have a 3.2mm wall to make them the strongest product on the market. They have tapered edges to prevent any snagging when off road.

Unlike traditional box section sliders the tubular profile and tapered ends ensure you have a smooth ride, whatever may be in your way. They are galvanized and coated with a textured black powder coat finish for the best looking rock sliders available.



Rock sliders		
Defender 90	Tubular (pair)	LS7532
Defender 110 5 Door	Tubular (pair)	LS7533
Defender 110 3 Door	Tubular (pair)	LS7534
Discovery 3 cw	Tree Bars (pair)	LS7559
Discovery 4 cw	Tree Bars (pair)	LS7559
Discovery 3	Sill Protector (pair)	LS7560
Discovery 4	Sill Protector (pair)	LS7560

Flexi wheelarch kit		
Defender	4.5" wide (5ft length)	LS7671
Defender	6.5" super wide (5ft length)	LS7672

Rear Bumperettes		
Defender 90 c/w	Cut Out (pair)	LS7535
Defender 110	Rear Bumperettes (pair)	LS7536



Made from EPDM Rubber Compound

Once fitted these will form a smooth curve to the contour of the wheel arch and the outer edge turns down making them ideal for competition and challenge vehicles. They take knocks without cracking and return to true form.

Kit includes four arches and fittings

For use with:

All superwinch Talon 9.5 and 12.5 models

Superwinch Tiger Shark 9500 and 11500 models. T-Max models up to 12500lbs.

A combination of performance and aesthetics has been utilised in the development of the Wildbear™ range, from recreational and competitive off road to commercial use. The entire range of winch bumpers has been created to accommodate most lowline winch ranges from 8500-12500lbs pulling capacity. T-Max winches from 8000-11000lbs. With most makes of winch sharing common physical dimensions and traditional 10"x4.5" bolt patterns, the majority will fit quite happily into a Wildbear™ tubular winch bumper.

All the Wildbear™ bumper range are made from high grade 5mm steel and 75mm diameter tubes (tubular bumpers) which are then sand blasted, zinc primed and then Matt Black powder coated for a superior, lasting finish. All bumpers (Defender, Discovery 1 and Discovery 2) include hi-lift jacking tubes and provision to install Wildbear™ stainless steel swivel recovery rated shackles. All winch bumpers have been VERITAS tested and certified.

Wildbear™ bumpers are designed to accommodate the Wildbear™ steering guards.

Tubular Winch Bumpers (Defender): A unique and aesthetically pleasing slant to the A-bar with tabs to install 2x5" lights. These are high mounted above the chassis rails for improved approach angle and strengthened frontal protection and include a steel protection plate to fill the void between the chassis rails. These are able to fit Defenders with or without air conditioning. The same bumpers are also available without the A-bar.

	Winch Bumper with "A" bar	
Defender	Tube Winch Bumper with "A" bar	LS7567
Defender	Tube Winch Bumper with "A"bar with air con	LS7569

	Tube Winch Bumper without "A" bar	
Defender	Tube Winch Bumper without "A" bar	LS7568
Defender	Tube Winch Bumper without "A"bar with air con	LS7570



	Winch bumper high mount	
Defender	winch bumper high mount	LS7571
Defender	winch bumper high mount with air con	LS67572

	Gullwing Winch Bumper	
Defender	Gullwing Winch Bumper	LS7813
Defender	Gullwing Winch Bumper DRL	LS7814
Defender	Gullwing Winch Bumper Twin DRL	LS7815
Defender	Gullwing Winch Bumper No A-Bar	LS7819
Defender	Gullwing Winch Bumper No A-Bar DRL	LS7820
Defender	Gullwing Winch Bumper No A-Bar Twin DRL	LS7821

Wildbear Defender Gullwing bumpers. Inspired by the Spectre movie.

Manufactured from 5mm steel this range offers a winch bumper suitable for most winch styles or a direct replacement bumper suitable for those that like the Gullwing style but prefer not to have a winch.

Built to withstand damage caused by rough terrain while off-road. Shotblasted and zinc primed before being powdercoated with a tough architectural powder for a long lasting, quality finish and require no cutting of grille.

A number of different options is available to customise your Gullwing bumper just how you want it.

Suitable for Land Rover soft A bar.

Cree LED included in the DRL options.

A-bar NOT included.



	Gullwing Bumper	
Defender	Gullwing Bumper	LS7816
Defender	Gullwing Bumper DRL	LS7817
Defender	Gullwing Bumper Twin DRL	LS7818
Defender	Gullwing Bumper No A-Bar	LS7824
Defender	Gullwing Bumper No A-Bar DRL	LS7825
Defender	Gullwing Bumper No A-Bar Twin DRL	LS7826

Discovery Winch Bumper		
Discovery 1	Winch Bumper inc Daytime Running Lights (DRL)	LS7573
Discovery 1	Winch Bumper inc Square Fog Lights	LS7811

Winch Bumpers (Discovery): Discovery 1 & 2 winch bumpers follow lines of the original bumpers whilst improving the approach angle and strengthening the front end. The Discovery 1 front winch bumper includes Wildbear™ cutouts on the front face with Day-Time running lights (included). The Discovery 2 bumper has a square cut out with mounts to install fog/driving lamps (included) allowing reconnection of the fog light circuit from the original bumper.

We are now including a close fit (C/F) option For the Discovery 2.
Includes provision to reinstall the headlamp washers.

Bumpers with DRL (Day-Time running lights) OR Fog Light options have the lights included.



For use with:

All Superwinch Talon 9.5 and 12.5 Models

Superwinch Tiger Shark 9500 and 11500 models. T-Max models up to 12500lbs.

Discovery 2 Winch Bumper		
Discovery 2	C/F Winch Bumper (NO lights)	LS7810
Discovery 2	Winch Bumper inc Square Fog Lights	LS7574
Discovery 2	C/F Winch Bumper inc Square Fog Lights	LS7800
Discovery 2	C/F Winch Bumper inc Daytime Running Lights (DRL)	LS7801



Heavy Duty Bumper including Lights		
Discovery 2	C/F H/D Bumper inc Square Fog Lights	LS7802
Discovery 2	C/F H/D Bumper inc Daytime Running Lights (DRL)	LS7803



Discreet Winch Mount

Discovery 3 Discovery 4 Range Rover Sport	LS7577
---	--------



For use with:

Superwinch Talon 9.5SR and 12.5SR
Lowline models.

Discreet Winch Mount: Manufactured to neatly and discretely install a Superwinch Talon 9.5 or 12.5 winch - but without the need for heavy duty bumper thus maintaining the original look of the vehicle.

Heavy Duty Bumpers: These follow the lines of the original bumpers whilst giving additional protection and strength. Jacking tubes and provision to install swivel recovery shackles are provided.

Bumpers with DRL (Day-Time running lights) OR Fog Light options have the lights included.

Rear Heavy Duty Bumpers: These follow the lines of the original bumpers whilst strengthening the rear end. Jacking tubes and provision to install swivel recovery shackles are provided.



Heavy Duty Rear Bumper	
Discovery 1 Rear Bumper	LS7575

With two swivel recovery point facilities.

(Recommend part number LS 5683, recovery points with shackles)



Heavy Duty Rear Bumper	
Discovery 2 Rear Bumper	LS7576

Headlamp surround

Defender headlamp surround Silver (pair)

LS7538



Headlamp surround

Defender headlamp surround Wildbear™ Grey (pair)

LS7539



Headlamp surround

Defender headlamp surround black (pair)

LS7537



Radiator Grille Stainless Steel

Defender Grille Silver

LS7756



Radiator Grille Stainless Steel

Defender Grille Wildbear™ Grey

LS7757



Radiator Grille Stainless Steel

Defender Grille Matt Black

LS7758



Chequer Plate: 5 Bar chequer plate comes in many forms, most famously used for Land Rover Defenders, its quality varies between brands.

With Wildbear™ only the best would be good enough to make the cut in the range. We have worked hard with UK based industrial engineers, factories and finishing houses to create the best range on the market, and in our view, worldwide.

With chamfered and de-burred edges, Wildbear™ chequer plate is smooth to touch, once degreased it is finished with a superior powder coating and is available in Matt Black, Silver and Wildbear™ Grey.

Every piece of chequer plate comes with a stainless steel colour matched fitting kit and has OEM foam gaskets included for a factory finish.

Wildbear™ is only available in 3mm aluminium 5 bar plate, meaning strength is at its core to protect your body parts. The range includes protection and style for wing tops, bonnets, side sills and rear corners.

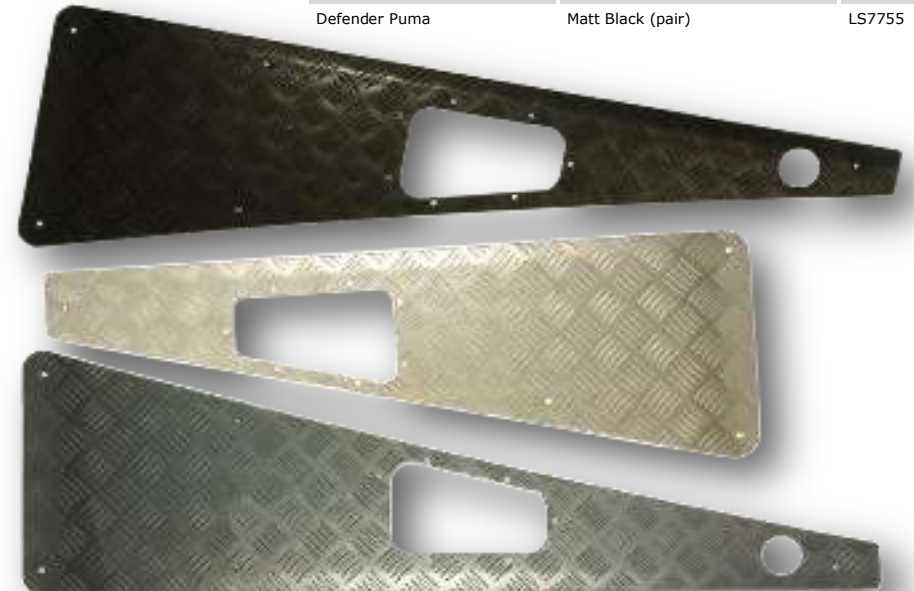
When only the best will do, then you need Wildbear™. The quality speaks for itself against other leading brands.



	Bonnet Chequer Plate	
Defender Td5/Tdi	Silver Bonnet Chequer Plate	LS7720
Defender Td5/Tdi	Wildbear™ Grey Bonnet Chequer Plate	LS7721
Defender Td5/Tdi	Matt Black Bonnet Chequer Plate	LS7722

	Wing Top Chequer Plate (pair)	
Defender	LH Aerial Silver (pair)	LS7747
Defender	RH Aerial Silver pair	LS7750
Defender	LH Aerial Wildbear™ Grey (pair)	LS7748
Defender	RH aerial Wildbear™ Grey (pair)	LS7751
Defender	LH aerial Matt Black (pair)	LS7749
Defender	RH aerial Matt Black (pair)	LS7752
Defender Puma	Silver (pair)	LS7753
Defender Puma	Wildbear™ Grey (pair)	LS7754
Defender Puma	Matt Black (pair)	LS7755

All complete with OEM Gaskets



	Sill Chequer Plate (pair)	
Defender 90	Sill Chequer Plate (pair) Silver	LS7744
Defender 90	Sill Chequer Plate (pair) Wildbear™ Grey	LS7745
Defender 90	Sill Chequer Plate (pair) Matt Black	LS7746
Defender 110	Sill Chequer Plate (pair) CSW Silver	LS7738
Defender 110	Sill Chequer Plate (pair) CSW Wildbear™ Grey	LS7739
Defender 110	Sill Chequer Plate (pair) CSW Matt Black	LS7740
Defender 110	Sill Chequer Plate (pair) Van 3 door (NOT HCPU) Silver	LS7741
Defender 110	Sill Chequer Plate (pair) Van 3 door (NOT HCPU) Wildbear™ Grey	LS7742
Defender 110	Sill Chequer Plate (pair) Van 3 door (NOT HCPU) Matt Black	LS7743
Defender 130	Sill Chequer Plate (pair) Double Cab Silver	LS7735
Defender 130	Sill Chequer Plate (pair) Double Cab Wildbear™ Grey	LS7736
Defender 130	Sill Chequer Plate (pair) Double Cab Matt Black	7737



	Rear Corner Chequer Plate (pair)	
Defender 90	Rear Corner Chequer Plate (pair) Silver	LS7732
Defender 90	Rear Corner Chequer Plate (pair) Wildbear™ Grey	LS7733
Defender 90	Rear Corner Chequer Plate (pair) Matt Black	LS7734
Defender 110	Rear Corner Chequer Plate (pair) Silver	LS7729
Defender 110	Rear Corner Chequer Plate (pair) Wildbear grey	LS7730
Defender 110	Rear Corner Chequer Plate (pair) Matt Black	LS7731



	Bumper Tread Chequer Plate (pair)	
Defender	Bumper Tread Chequer Plate (pair) all models short Silver	LS7726
Defender	Bumper Tread Chequer Plate (pair) all models short Wildbear™ Grey	LS7727
Defender	Bumper Tread Chequer Plate (pair) all models short Matt Black	LS7728



Lockable Glove Box Conversion Kit

Defender TDCi Puma LS7566



Seat Box Puma Conversion

Defender 300TDi/TD5 LS7530



Heavy Duty Coil Spring Retainers		
Defender	heavy duty coil spring retainers front (pair)	LS7556
Defender 90	heavy duty coil spring retainers rear (pair)	LS7554
Defender 110	heavy duty coil spring retainers rear (pair)	LS7555
Defender130	heavy duty coil spring retainers rear (pair)	LS7555
Discovery 1	heavy duty coil spring retainers front (pair)	LS7556
Discovery 1	heavy duty coil spring retainers rear (pair)	LS7554
Range Rover Classic	Front (pair)	LS7556
Range Rover Classic	Rear (pair)	LS7554

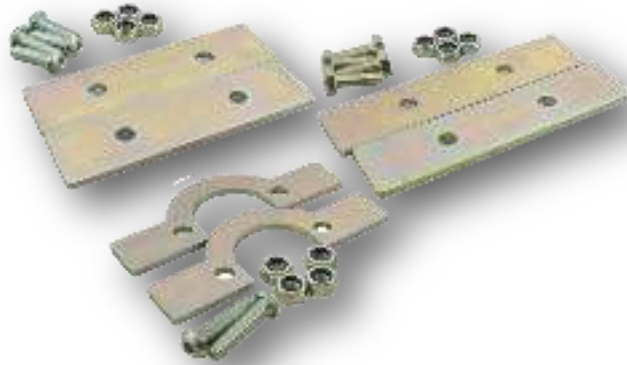
Suspension Hardware for Defenders, Discovery 1&2 and Range Rover Classic

There is one thing that is key to a safe and successful off-road driving, keeping your wheels on the ground. In all suspension upgrades and replacements it is imperative to ensure you have the correct hardware for your installation. Wildbear™ has a full compliment of hardware to be either fitted alongside the Wildbear™ springs and shock absorbers or added to your existing standard factory suspension. Wildbear™ Suspension hardware allows you to customise your Land Rovers suspension and therefore increase suspension travel and articulation. Through product development, real world testing and technical feedback we have ensured every Wildbear™ product is 'fit for purpose' drive safer and further in all types of terrain, from recreational off-road to hard-core competitive use.

The range includes extended and lowered shock mounts and turrets, relocation cones, spring lifters and all necessary hardware including Heavy Duty Turret Rings and heavy duty 5mm spring retainers. All hardware is zinc coated with Rogard 500 and then powder coated in Wildbear™ grey (turret rings and spring retainers are coated in Rogard 500).

Please note: Care must be taken when customising your suspension to make sure the suspension works freely throughout full articulation, check that brake lines are long enough and that steering geometry and driveline angles are not adversely affected. If ever in doubt have your Wildbear™ products professionally fitted for ultimate reliability and use.

Images are for illustration, actual product may vary slightly in finish.



Lift Rods	
Discovery 3 Lift Rods set of 4	LS7558
Discovery 4 Lift Rods set of 4	LS7558



2"	Spring Lifter Kit	
Defender 90	2" Front and Rear set of 4	LS7546
Discovery 1	2" Front and Rear set of 4	LS7546
Discovery 2	2" Front pair	LS7548
Range Rover Classic	2" Front and Rear set of 4	LS7548



Heavy Duty Turret Rings		
Defender	Front (pair)	LS7549
Discovery	Front (pair)	LS7549
Range Rover Classic	Front (pair)	LS7549



Bump Stop Extension		
Defender	1" pair	LS7540
Discovery	1" pair	LS7540
Range Rover Classic	1" pair	LS7540



Air bag lifter kit rear 2"	
Discovery 2 air bag lifter kit rear 2"	LS7547



	Relocation Cone	
Defender 90	Front (pair)	LS7544
Defender 90	Rear (pair)	LS7542
Defender 110	Rear (pair)	LS7543
Defender 130	Rear (pair)	LS7543
Discovery	Front (pair)	LS7544
Discovery	Rear (pair)	LS7542
Range Rover Classic	Front (pair)	LS7544
Range Rover Classic	Rear (pair)	LS7542

	Long Travel Cater Cone	
Defender 90	Rear (pair)	LS7545
Discovery 1	Rear (pair)	LS7545
Range Rover Classic	Rear (pair)	LS7545

	Shock turrets (Front)	
Defender	Lowered 2" (pair)	LS7550
Defender	Standard (pair)	LS7551
Defender	Plus 2" (pair)	LS7553
Discovery1	Lowered 2" (pair)	LS7550
Discovery 1	Standard (pair)	LS7551
Discovery	Plus 2" (pair)	LS7553
Discovery 2	Standard (pair)	LS7552
Range Rover Classic	Lowered 2" (pair)	LS7550
Range Rover Classic	Standard (pair)	LS7551
Range Rover Classic	Plus 2"(pair)	LS7553



	Shock Mounts Top	
Defender	Lowered 2" (pair)	LS7557
Discovery 1	Lowered 2" (pair)	LS7557
Range Rover Classic	Lowered 2" (pair)	LS7557

	Reverse Relocation Cone	
Defender 90 Rear (pair)		LS7541
Discovery 1 Rear (pair)		LS7541
Range Rover Classic Rear (pair)		LS7541





WB WILDBEAR