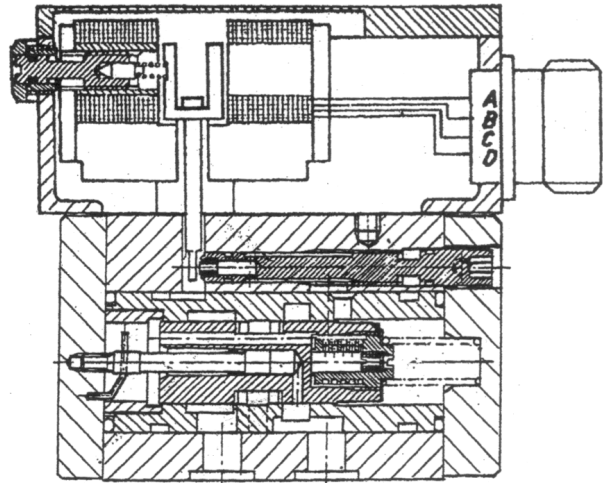
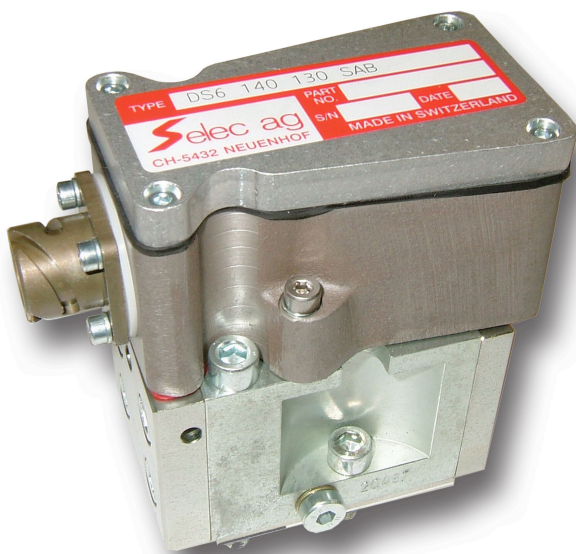


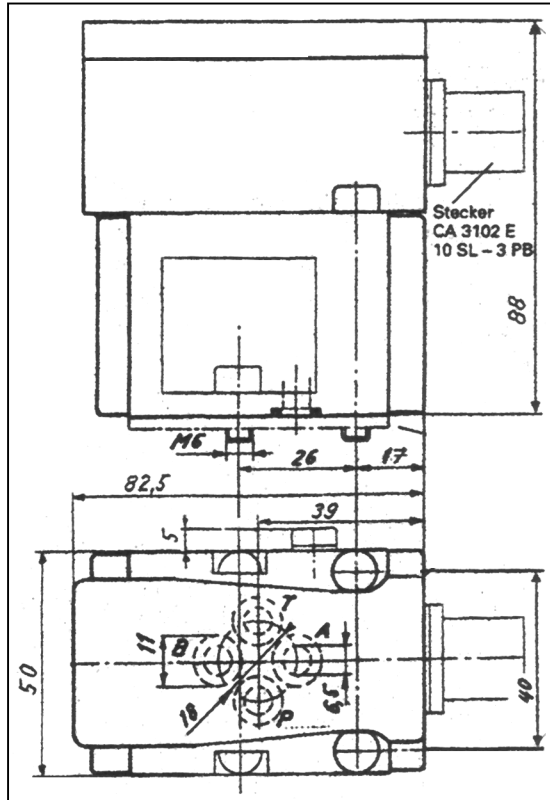
Characteristics of DS6

- Servovalve for position-, force- or pressure control
- Pressure reduction and pressure relief is possible
- Two stage servovalve with mechanical feedback
- Fully iron
- Rugged, long-life design
- Attachment pattern Selec or with adapterplate NG6 for 4-ports
- High resolution
- High pressure application
- Easy field maintenance

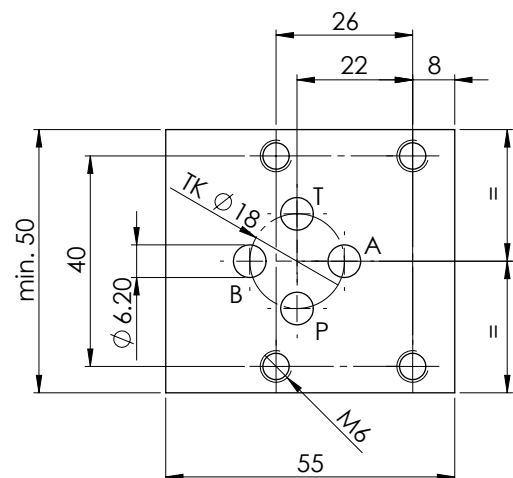

Technical data DS6

Rated Flow $\pm 10\%$ at 70 bar ΔP drop	30 L/min
Frequency response at 90° Phase Shift, 210bar, at 40% amplitude	90 Hz
Step response	9 ms
Leakage at 70 bar, 50 cSt	0.3 L/min
Attachment pattern	Selec Norm (Adapter for Cetop 03 / NG 6 available)
Maximum pressure, port P, A, B	350 bar (420 bar on request)
Maximum pressure, port T	100 bar
Temperature range	-20 to +90 °C
Fluid viscosity	20 to 380 cSt
Resolution	0,2%
Hysteresis	<0.1%
Null point shift for pressure change of 20%	1%
Null point shift for viscosity change of 30 cSt	1.5%
Electrical feedback	No
Electrical connector	3 pin / CA 3102E 10SL-3PB
Amplifier electronics	External amplifier electronics available (AE-1 or AE-1D)
Weight	1.5 kg

Dimensions



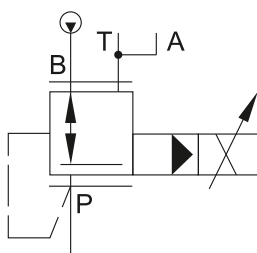
Connection (View application)



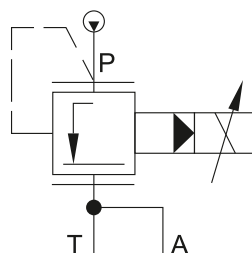
Hydraulic Schema

Depending on attachment configuration the DS6 performs pressure reduction or pressure relief.

pressure reduction



pressure relief



Electrical Data

Coil	Typ	40	80	100	130	200
Parallel connection	max. J [mA]	52	104	130	170	350
	max. U [V]	32	16	10	8	5
Serial connection	max. J [mA]	27	53	66	86	175
	max. U [V]	63	31	21	15	9
Resistance per coil at	70° [Ω]	1200	300	160	90	24

Coil 130mA standard. Coil 40 mA, 80 mA, 100 mA, 200 mA on request.

Orderinformation

DS6 or DS11

□ □ □ □ □ □ □

Code	Model
DS6	DS6
DS11	DS11

Code	Customer design
C	Customer design
N	Standard design

Code	A+T ports ^{*1}
S	A+T ports seperated (standard)
C	A+T ports internally connected

Code	Type of protection
S	IP65 (only DS6)
N	IP56 (Standard)

Code	Input pressure ^{*2}
040	40 bar
070	70 bar
140	140 bar
210	210 bar
315	315 bar
350	350 bar
420	420 bar

Code	Coil magnetic system
40	40 mA
80	80 mA
100	100 mA
130	130 mA (Standard)
200	200 mA

Code	Seal material
V	Viton (FPM, FKM)
N	NBR

*1) When A+T connected, no line T is required.
 Note! An eventual pressure in A (when high flow) increases pressure in T which increases the controlled pressure in P.

*2) The controlled pressure is preadjusted by Selec to ½ input pressure when no current.