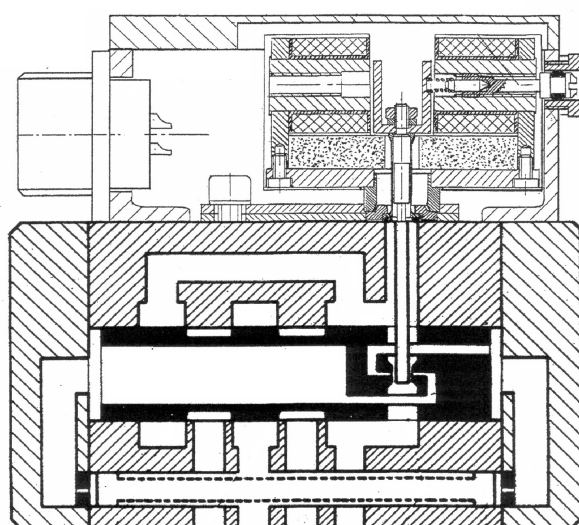
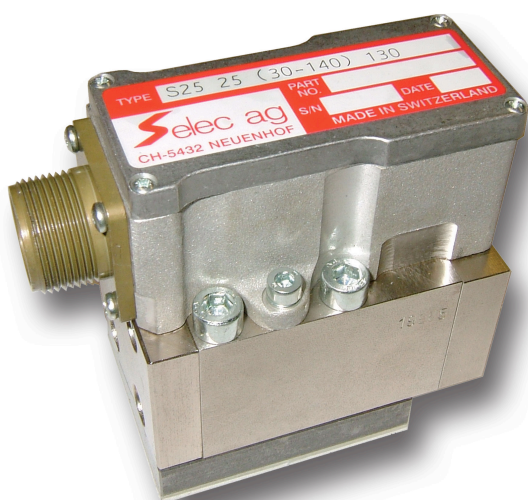
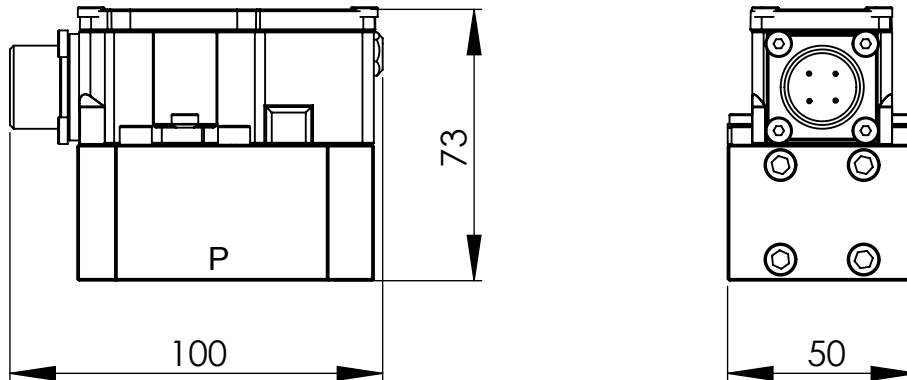
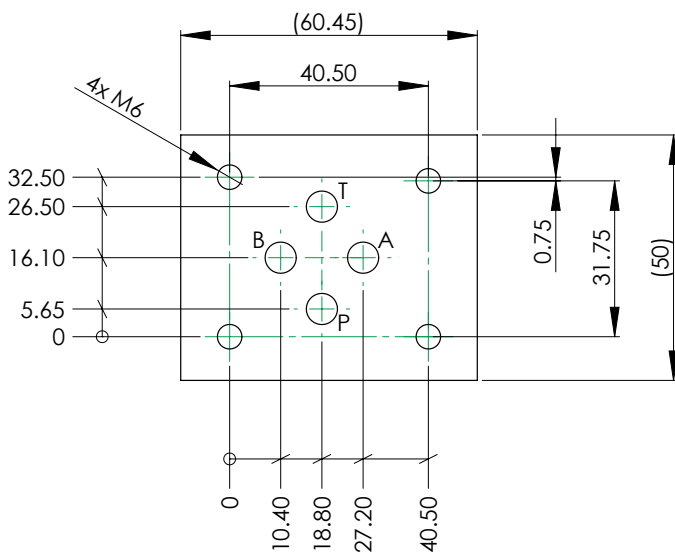
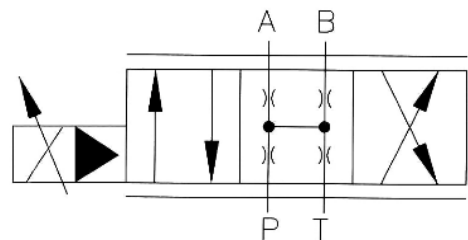


Characteristics of S25

- Servovalve for position-, force-, pressure- or speed control
- Two stage servovalve with mechanical feedback
- First stage nozzle / flapper
- Fully iron
- Rugged, long-life design
- Port pattern NG 6 / Cetop 03 for 4-ports
- Easy field maintenance
- 2 minutes filter exchange


Technical data S25

Nominal size	1	2	5	10	25
Rated Flow at 70 bar ΔP	1 L/min	2,5 L/min	5 L/min	10 L/min	25 L/min
Frequency response at 90° Phase Shift, 210bar, at 40% amplitude	130 Hz	130 Hz	120 Hz	110 Hz	100 Hz
Step response	6 ms	6 ms	7 ms	7 ms	7 ms
Leakage at 70 bar ΔP , 40 cStk	0,6 L/min	0,8 L/min	0,9 L/min	1,0 L/min	1,5 L/min
Port pattern	Selec Norm (Adapter for Cetop 03 / NG 6 available)				
Maximum pressure, port P, A, B	315 bar (350 bar on request)				
Maximum pressure, port T	20 bar				
Temperature range	-20 to +90°C				
Fluid viscosity	20 to 360 cSt				
Resolution	0,2%				
Hysteresis	<4%				
Null point shift for pressure change of 20%	1%				
Null point shift for viscosity change of 30cSt	1.5%				
Electrical feedback	No				
Electrical Connector	4 pin / MS3106A14S-2S				
Amplifier electronics	External Amplifier electronics AE-1 or AE-1D				
Weight	1.3 kg				

Dimensions

Connection (View application)

Hydraulic Schema

Electrical Data

Coil	Typ	40	80	100	130	200
Parallel connection	max. J [mA]	52	104	130	170	350
	max. U [V]	32	16	10	8	5
Serial connection	max. J [mA]	27	53	66	86	175
	max. U [V]	63	31	21	15	9
Resistance per coil at	70° [Ω]	1200	300	160	90	24

Coil 130mA standard. Coil 40 mA, 80 mA, 100 mA, 200 mA on request.

Applications examples

Pump & compressor control, wood industry, road work, mobile crane, packaging system, agriculture machinery, Industrial automation, m.m.

Orderinformation

S25

□ □ □ □ □

Code	Customer design
C	Customer design
N	Standard design

Code	Flow at 70 bar Δ
1	1 L/Min
2	2 L/Min
5	5 L/Min
10	10 L/Min
25	25 L/Min

Code	Coils magnetic system
40	40 mA
80	80 mA
100	100 mA
130	130 mA (Standard)
200	200 mA

Code	Input pressure in P
70	70 bar
140	140 bar
210	210 bar
315	315 bar

Code	Seal material
V	Viton (FPM, FKM)
N	NBR