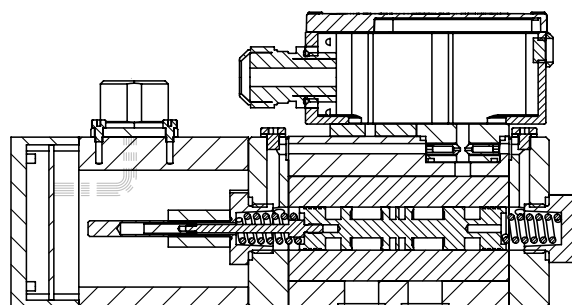
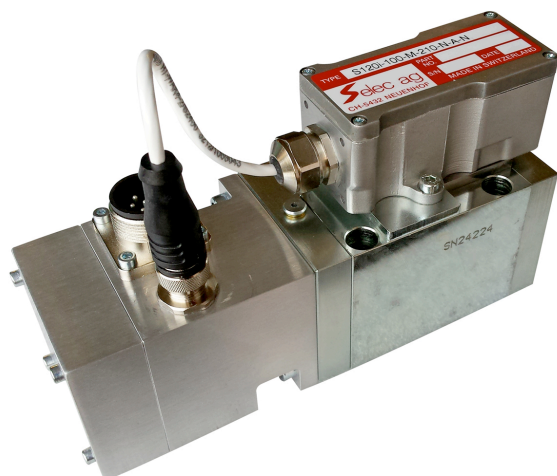


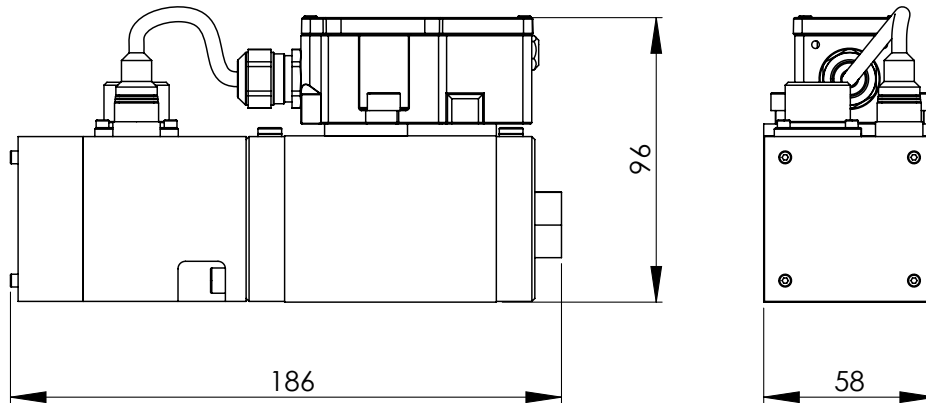
Characteristics of S120i

- Servovalve for position-, force-, pressure- or speed control
- Two stage servovalve with spool position feedback LVDT
- Fully iron
- Rugged, long-life design
- ISO 4401 port pattern for 4-ports
- 2 minutes filter exchange
- Integrated controller electronic


Technical data S120i

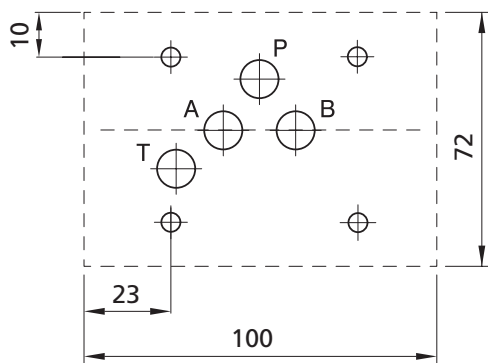
Nominal size	60	60	80	80	100	100
Version	Standard	Pro	Standard	Pro	Standard	Pro
Attachment pattern	ISO 4401-05-05-0-94 without X-Port					
Nominal flow at 70bar Delta p over two steering edges	60 L/min	60 L/min	80 L/min	80 L/min	100 L/min	100 L/min
Frequency response at 90° Phase shift, 210bar, at 10% amplitude	58Hz	120Hz	58Hz	120Hz	58Hz	120Hz
Step response at 210bar, 100% amplitude	See diagramm page 3					
Leackage prestage at 210bar, 40cStk	1.1 L/min	2.0 L/min	1.2 L/min	2.1 L/min	1.3 L/min	2.3 L/min
Leackage spool at 210bar, 40cStk	3.1L/min	3.1L/min	3.8L/min	3.8L/min	4.5L/min	4.5L/min
Max. pressure in P, B, A	315bar					
Max. pressure in T	50bar					
Temperature range	-20 bis +90°C					
Fluid viscosity	20 to 380 cSt					
Requested purity-class of hydraulic oil	ISO 4406:18/16/13					
Resolution	0.1% of rated signal					
Hysteresis	<0.3%					
Null point shift with pressure change of 20%	<0.5%					
Null point shift with temperature change of 40°C	1.5%					
Valve connector	6+PE EN175201-804					
Customer signals	+/-10Volt, +/-10mA, 4....20mA, other on request					
Fail-safe spool position	Mid position, or P→B/ A→T or P→A/ B→T					
Power supply voltage	24VDC (Min. 22VDC, max. 27VDC)					
Max. current consumption	250mA					
Installation position	any					
Weight	2.6 Kg					

Dimensions

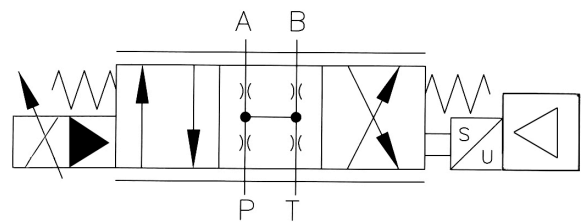


Connection (View application)

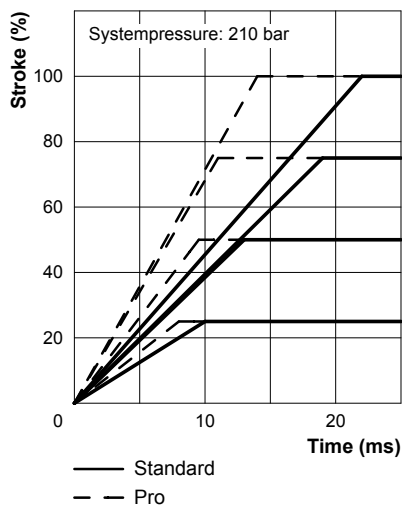
ISO 4401-05-05-0-94, without X-connection



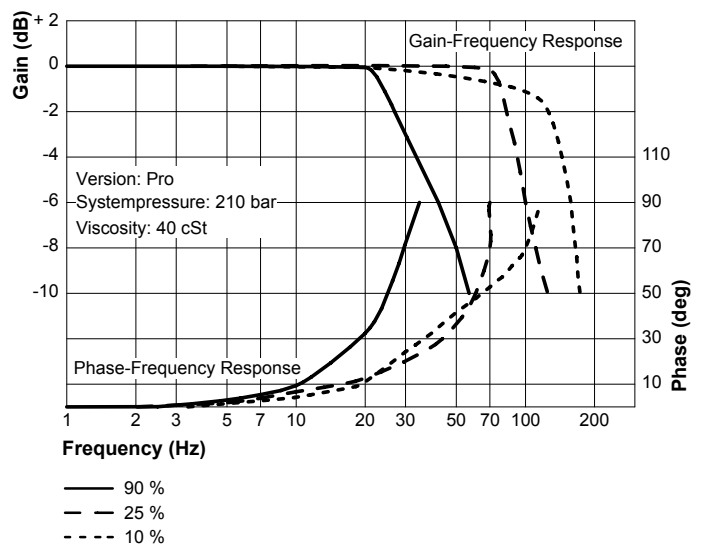
Hydraulic Schema



Step Response



Frequency Response



Orderinformation

S120i

Code	Version
S	Standard
P	Pro

Code	Customer design
C	Customer design
N	Standard design

Code	Spool
Z	Zero Overlap
Y	2% Overlap
X	10% Overlap
V	3 way

Code	Seal material
V	Viton (FPM, FKM)
N	NBR

Code	Flow at 70 bar Δ
60	60 L/Min
80	80 L/Min
100	100 L/Min

Code	Input pressure in P
70	70 bar
140	140 bar
210	210 bar
315	315 bar

Code	Fail safe spool position
A	P → B / A → T
B	P → A / B → T
M	No flow