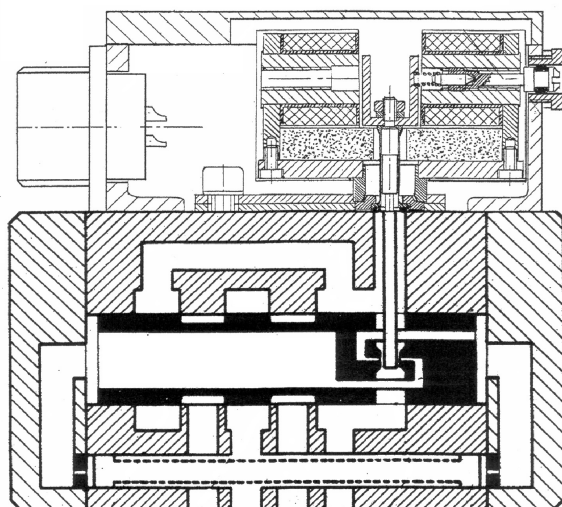
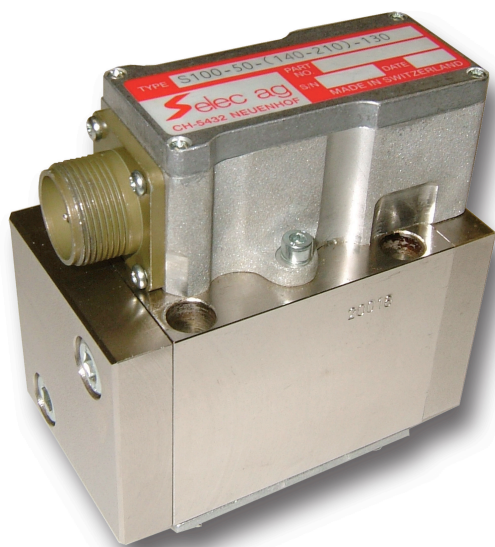
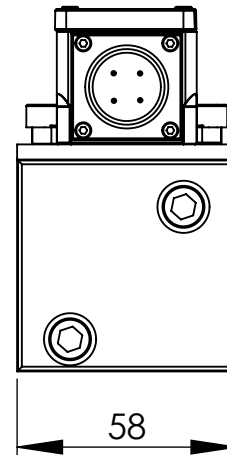
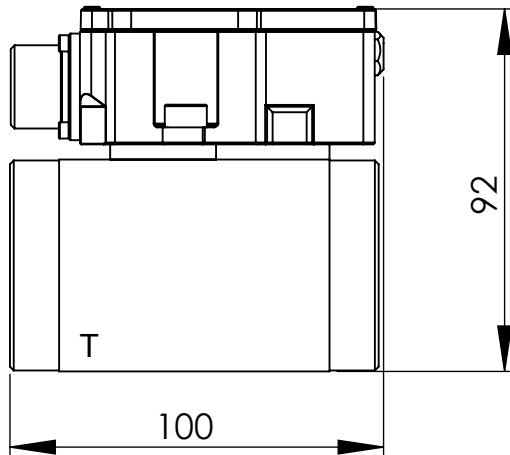
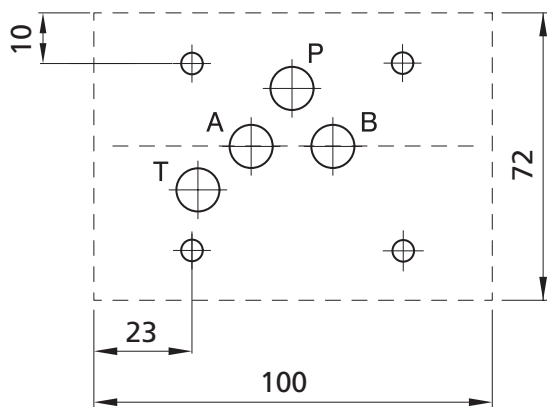
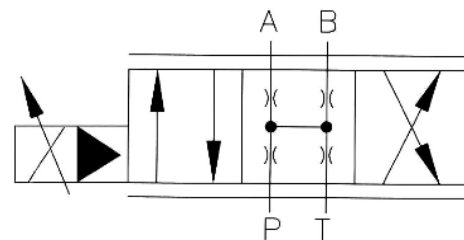


Characteristics of S100

- Servovalve for position-, force-, pressure- or speed control
- Two stage servovalve with hydromechanical feedback
- First stage nozzle / flapper
- Fully iron
- Rugged, long-life design
- ISO 4401 port pattern for 4-ports
- Easy field maintenance
- 2 minutes filter exchange


Technical data S100

Nominal size	50	60	75
Rated Flow at 70 bar ΔP drop over two steering edges	50 L/min	60 L/min	75 L/min
Frequency response at 90° Phase Shift, 210bar, at 40% amplitude	100 Hz	80 Hz	50 Hz
Step response	8 ms	12 ms	16 ms
Leakage at 70 bar, 50 cStk	1.5 L/min	1,5 L/min	1,5 L/min
Port pattern	Cetop 05 / NG 10		
Maximum pressure, port P, A, B	315 bar (350 bar on request)		
Maximum pressure, port T	20 bar		
Temperature range	-20 to +90°C		
Fluid viscosity	20 to 380 cSt		
Resolution	0,2%		
Hysteresis	<4%		
Null point shift for pressure change of 20%	1%		
Null point shift for viscosity change of 30 cSt	1.5%		
Electrical feedback	No		
Electrical connector	4 pin / MS3106R14S-2S		
Amplifier electronics	External Amplifier electronics AE-1 or AE-1D		
Weight	2.4 kg		

Dimensions

Connection (View application)

Hydraulic Schema

Electrical Data

Coil	Typ	40	80	100	130	200
Parallel connection	max. J [mA]	52	104	130	170	350
	max. U [V]	32	16	10	8	5
Serial connection	max. J [mA]	27	53	66	86	175
	max. U [V]	63	31	21	15	9
Resistance per coil at	70° [Ω]	1200	300	160	90	24

Coil 130mA standard. Coil 40 mA, 80 mA, 100 mA, 200 mA on request.

Application examples

Pump & kompressor control, plastic molding, wood industry, mobile crane, power generation, packaging system, machine automation, agriculture machinery, industrial automation, m.m.

Orderinformation

S100



Code	Customer design
C	Customer design
N	Standard design

Code	Flow at 70 bar Δ
50	50 L/Min
60*	60 L/Min
75*	75 L/Min

* special signal

Code	Coils magnetic system
40	40 mA
80	80 mA
100	100 mA
130	130 mA (Standard)
200	200 mA

Code	Input pressure in P
70	70 bar
140	140 bar
210	210 bar
315	315 bar

Code	Seal material
V	Viton (FPM, FKM)
N	NBR