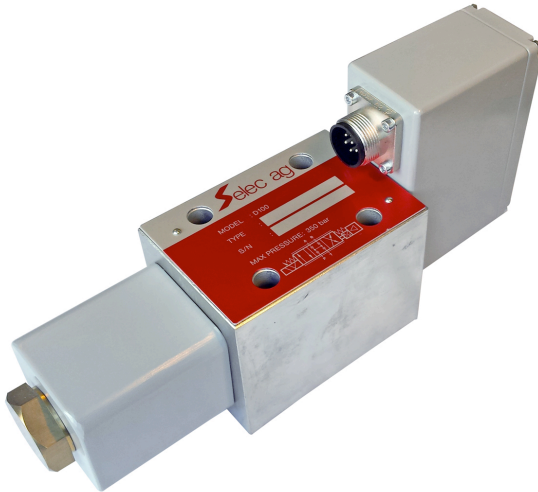


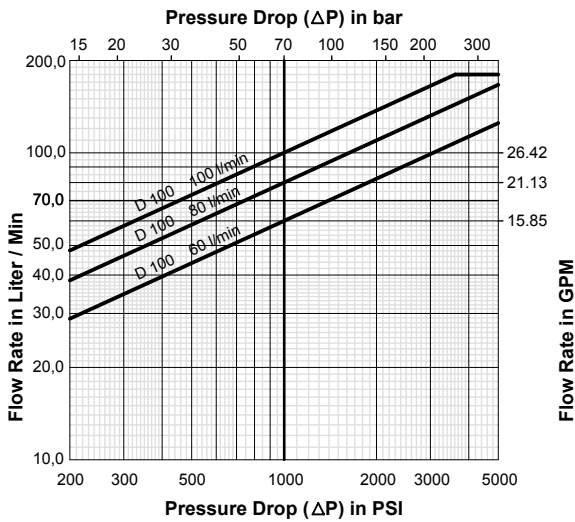
**Characteristics of D100**

- Proportional Servo Valve for position-, velocity-, and pressure control
- Direct spooldrive with bidirectional proportional magnet
- Attachment pattern NG 10 / Cetop 05
- Flowcurve linear or bent
- Customer requested fail-safe-spool position when electrical power down
- On board electronic


**Technical Data D100**

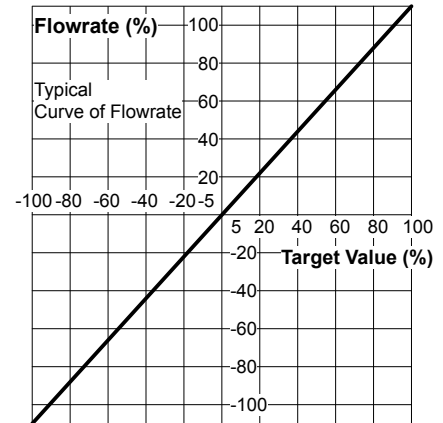
Function	Direct driven 4/3-Valve		
Spool drive	Bidirectional proportional magnet		
Attachment pattern	ISO 4401-05, Cetop 5		
Nominal Flow at 70 bar $\Delta P$	60 L/min	80 L/min	100 L/min
Frequencyresponse at 90° phaseshift and 40% amplitude	60 Hz	60 Hz	60 Hz
Leckage at 100 bar, 40 cSt	1,0 L/min	1,4 L/min	1,8 L/min
Step response for 100% amplitude	<15ms		
Max. pressure in P, B, A	350 bar		
Max. pressure in T without Y	250 bar		
Max. pressure in T with Y	350 bar		
Temperature range	-20 to 70C°		
Fluid viscosity	10 to 360 cSt.		
Cleanliness	NAS 1638: <7 ISO 4406:16/13		
Resolution	0,1% of rated signal		
Hysteresis	<0.2%		
Null shift with pressurechange of 20%	<0.2%		
Null shift with temperaturchange of 40C°	<1.5%		
Electric connector	6+PE DIN43563		
Connector 6+PE (Customerside)	EN175201-804 (not included, but available)		
Customer-Signals	+/-10Volt, +/-10mA, 4...20 mA, other on request		
Fail-safe spoolposition	Mid-position or P→B / A→T or P→A / B→T		
Power supply voltage	24 VDC, min. 22 VDC, max. 27 VDC		
Max. current consumption	2.5 A		
Type of protection	IP67		
Installation position	any		
Weight	5 Kg		

**Valve Flow Diagram**

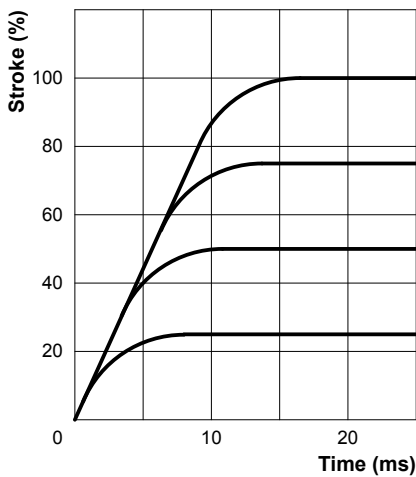


**Volume-Signal**

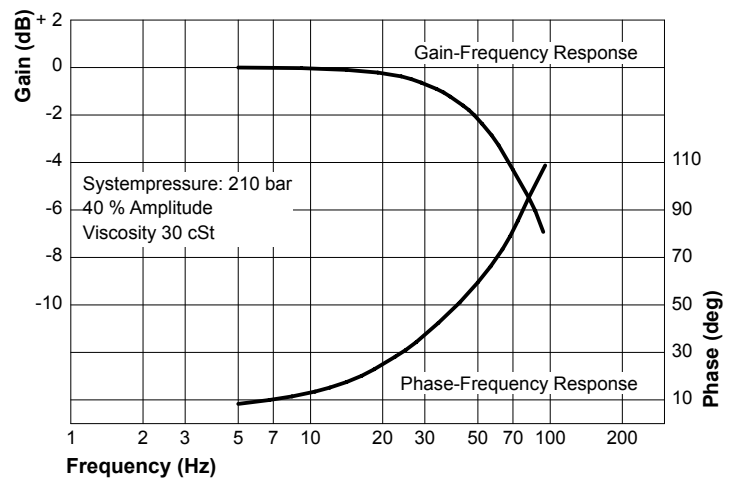
at constant pressure difference

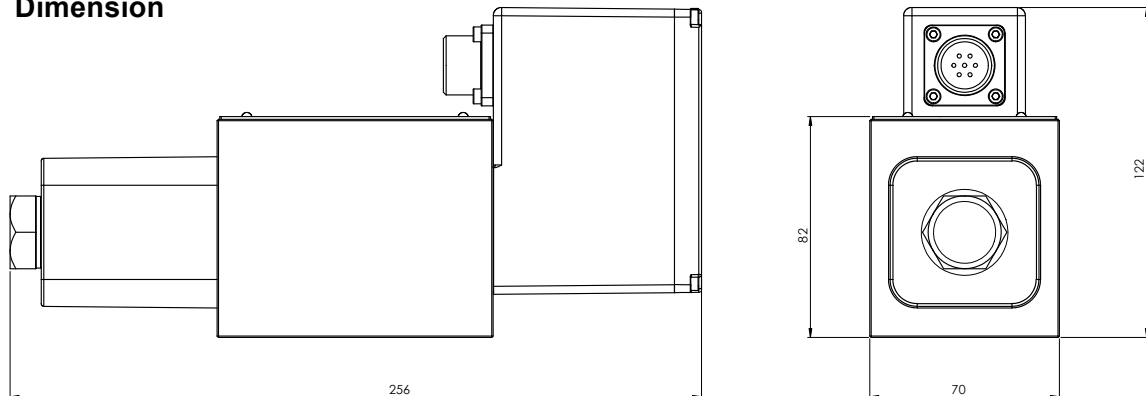


**Step Response**

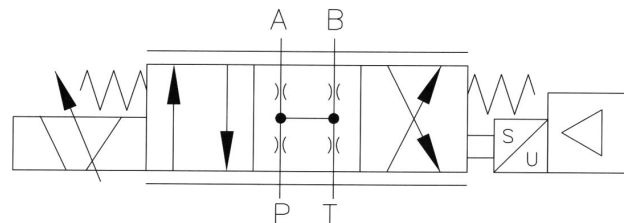
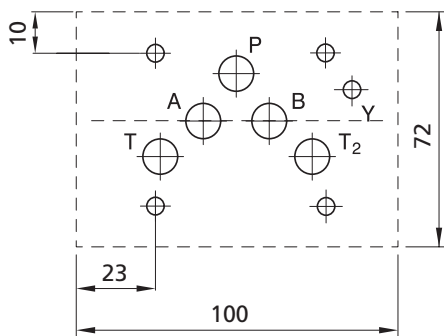


**Frequency Response**

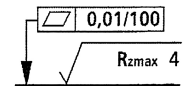


**Dimension**

**Connection (View application)**

ISO 4401-05-05-0-94, without X-Connection

**Hydraulic schema**

**Valve attachment-surface**

Please assure the following valve attachment surface quality:


**Electrical Connection**

Pin A	Supply	24 VDC (22 VDC – 30 VDC)
Pin B	GND	0 VDC
Pin C	Not used	
Pin D*	Input Command Valve flow	+/- 10 VDC, +/- 10 mA, 4...20 mA
Pin E	Input Command Valve flow (invert)	+/- 10 VDC, +/- 10 mA
Pin F	Output spool position	4...20 mA
Pin $\perp$	Protected earth	

\* Positive command signal, or 20mA Signal on Pin D shows flow P→A und B→T

\* Negative command signal, or 4mA Signal on Pin D shows flow P→B und A→T

**Installation instruction**
**Torque for valvexing-screws**

Torque the required fort he M6x40 DIN 912 10.8 with 13Nm. No dirt or grease allowed!

**Oil filtration**

In pressureline P, just before the valve, the &lt;10um absolut filtration must be installed.

Previous flushing of all oil through filter and flushingplate is recommended.

Please ask for the flushing plate.

# Orderinformation

