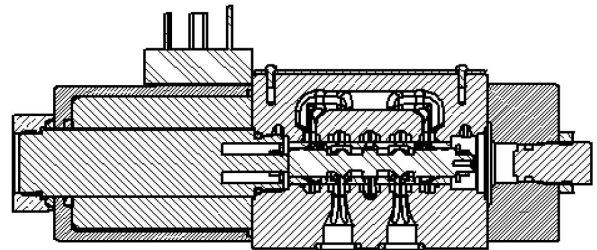


## Characteristics of D40V

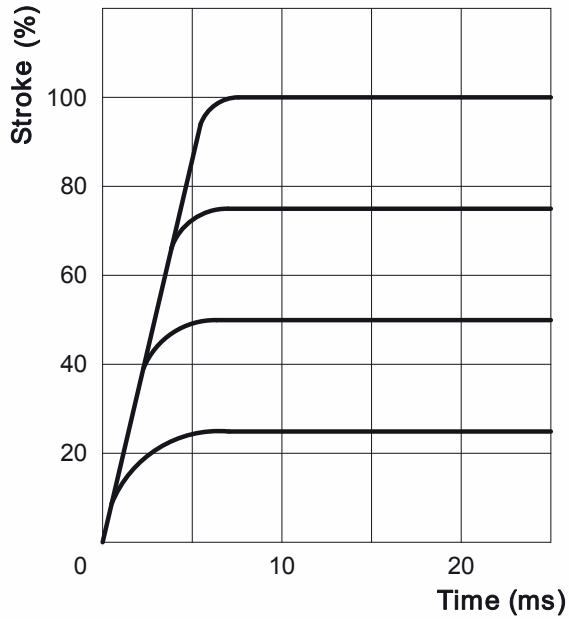
- Proportional Servo Valve for position-, velocity-, and pressure control
- Direct Spooldrive with bidirectional proportional magnet
- Attachment pattern NG 6 / Cetop 03
- Linear or bent flowcurve
- Customer requested fail-safe-spool position when electrical power down
- Recommended as pilot valve for two stage valves



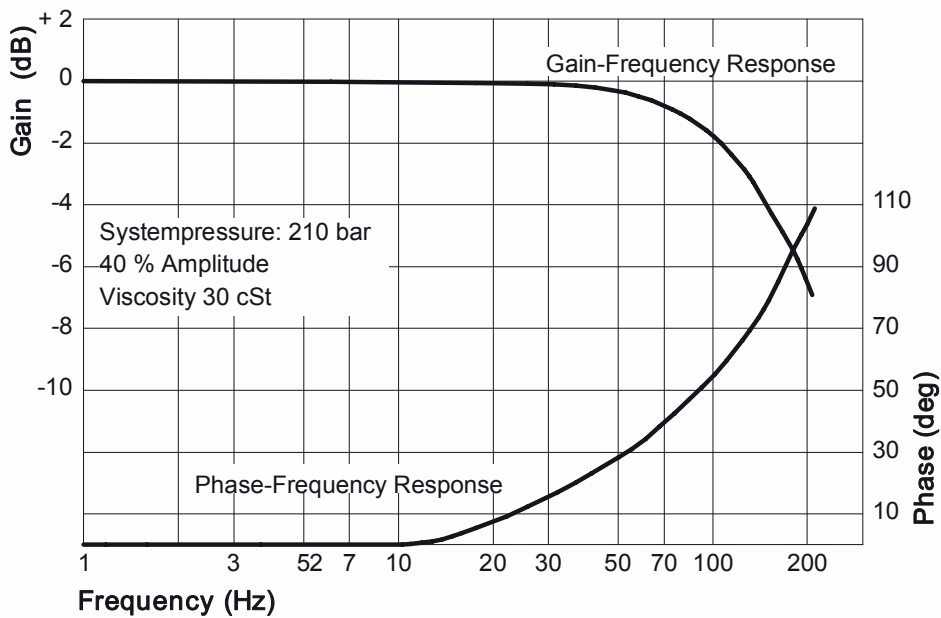
## Technical Data D40V

Function	Direct driven 4/3-Valve					
Spool drive	Bidirectional proportional magnet					
Attachment pattern	ISO 4401-03 / Cetop 03					
Nominal Flow at 70 bar $\Delta P$	1 L/min	2 L/min	5 L/min	10 L/min	20 L/min	0,50 L/min
Frequencyresponse at 90° phaseshift and 40% amplitude	180 Hz	180 Hz	180 Hz	180 Hz	180 Hz	180 Hz
Leakage at 100 bar, 40 cSt	0,1 L/min	0,1 L/min	0,2 L/min	0,3 L/min	0,5 L/min	0,8 L/min
Step response for 100% amplitude	<6ms					
Max. pressure in P, B, A	350 bar					
Max. pressure in T without Y	250 bar					
Max. pressure in T with Y	350 bar					
Temperature range	-20 to +150C°					
Fluid viscosity	10 to 360 cSt					
Requested cleanliness-class of fluid	NAS 1638: < class 7 ISO 4406 :16/13, 1 liter version: NAS 1638: < class 6 ISO 4406 :14/12					
Resolution	1% of rated signal					
Hysteresis	5% with dither signal					
Null shift with pressurechange of 20%	<2%					
Null shift with temperaturchange of 40C°	<5%					
Electric connector 3+PE	Standard: DIN 43650-1 (Other on customer request)					
Connector 3+PE (Customerside)	not included, but available					
Max. current consumption	+/-1.8 A					
Amplifier Electronics	AE-D1					
Fail-safe spool position	Mid-position, P→B / A→T, A→T / B→T					
Type of protection	IP67					
Installation position	any					
Weight	1.5 Kg					

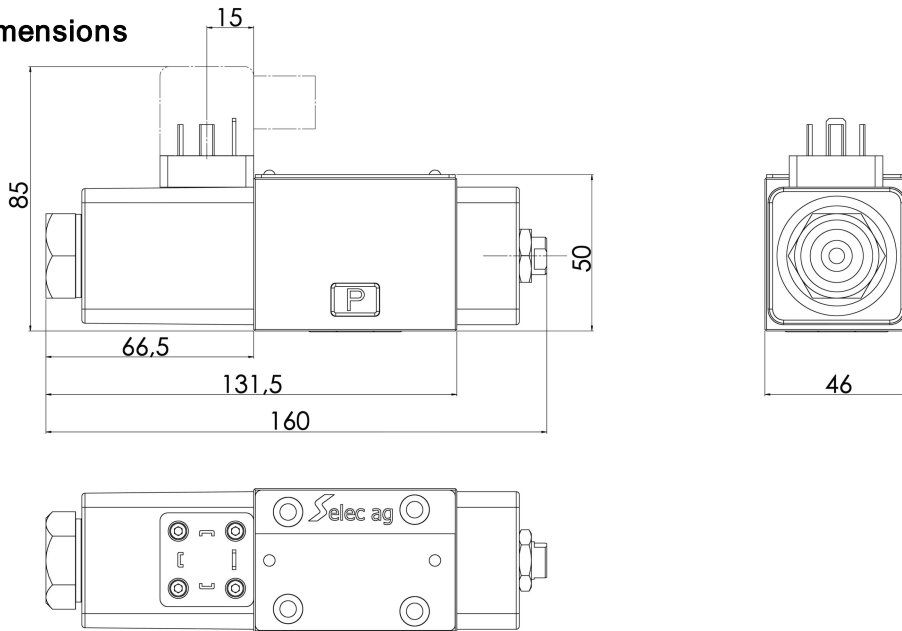
Step Response



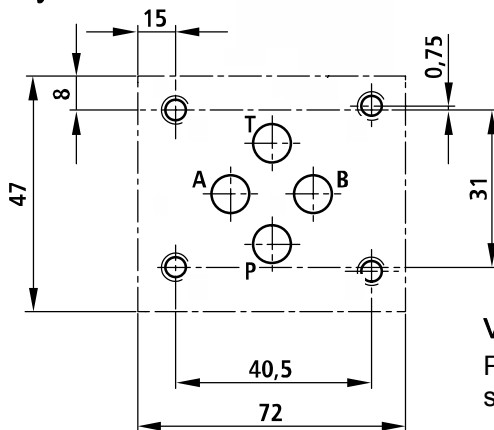
Frequency Response



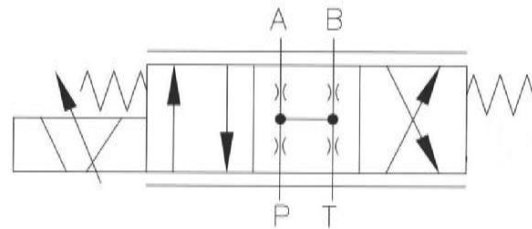
**Dimensions**



**Hydraulic attachment**

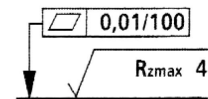


**Hydraulic schema**



**Valve attachment-surface**

Please assure the following valve attachment-surface quality:



**Electrical Connection**

Pin 1*	Coil
Pin 2	Not used
Pin 3	Coil
PE	Protected earth

\*Positive command signal on Pin 1 shows flow P → A and B → T

\*Negative command signal on Pin 1 shows flow P → B and A → T

**Installation instructions**

**Torque for valvefixing-screws**

The required torque for the M5 x 50 screw is 7.6Nm. No dirt or grease allowed!

**Oil filtration**

In pressureline P, just bevor the valve, the <10um absolut filtration must be installed. Previous flushing of all oil trough filter and flushingplate is recommended. Please ask for the flushing plate.

# Orderinformation

**D40V**


Code	Spool
<b>Z</b>	Zero Overlap
<b>Y</b>	Overlap 2%
<b>X</b>	Overlap 10%

Selec  
Specific

Code	Flow at 70 bar $\Delta$
<b>20</b>	20 L/Min
<b>10</b>	10 L/Min
<b>5</b>	5 L/Min
<b>2</b>	2 L/Min
<b>1</b>	1 L/Min

Code	Orientation of valve
<b>A</b>	Connector on A-side (standard)
<b>B</b>	Connector on B-side

Code	Spool position when power down
<b>A</b>	P → B / A → T
<b>B</b>	P → A / B → T
<b>M</b>	No flow

Code	Seal Material
<b>V</b>	Viton (FPM, FKM)
<b>N</b>	NBR