

Metal L-Trim #200-B (M20B)

Metal Trim

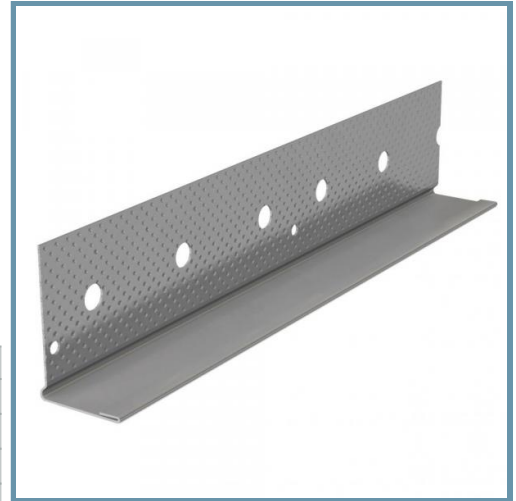
Metal L-Trim is used to provide a clean finished edge at door and window openings or when wallboard abuts dissimilar surfaces such as suspended ceilings, beams, plaster, masonry and concrete. L-Trim is installed after the gypsum panels are already in place, unlike mud-on J, which must be installed during gypsum panel installation. L-Trim is easily attached with screws or nails after the panels are in place. Installation is completed with joint compound for a smooth ready-to-paint surface.

Product Data & Ordering Information

Material: 0.012 min thickness, G30 galvanized

Dimensions: 1-1/4" leg x Width

Width	Length	Wt./Ctn.	Pcs./Ctn.
1/2"	8'	28 lbs	50
1/2"	10'	35 lbs	50
5/8"	8'	28 lbs	50
5/8"	10'	35 lbs	50



- Hemmed front flange for rigidity
- Knurled, perforated flange enhances joint compound adhesion
- Easy to attach and finish

Code Approvals & Performance Standards

- [ASTM C1047](#) Standard Specification for Accessories for Gypsum Wallboard and Gypsum Veneer Base
- [SDS For ASTM A653 Steel Finishing Products](#) For Interior Finishing and Exterior Finishing

Storage

All stored materials shall be kept dry. Materials shall be stacked off the ground, supported on a level platform, and protected from the weather.

