

MAXIMIZER

Gas Multideck Industrial Ovens

MODEL 2324I

General Features:

- **Quality Construction**
for long life
- **Time proven**
Over 100 years of design life
- **More for less**
More square inches of heating space for each precious foot of workspace. More oven for your investment dollar.
- **Large capacity**
2904 sq. in. interior space
- **Energy efficient**
New energy-saving burner system
- **Black exterior finish**
standard
Stainless Steel front, available
All Stainless Steel, available
- **Aluminized interior**
- **150°- 500° F thermostat**
Low holding
Standard on I Models
- **250°- 550° F thermostat**
Available
- **Steel decks, standard**
- **Versatile**
Perfect for a variety of heating needs
- **Easily serviceable**
All controls can be replaced from the front of the unit
- **Warranty**
One year parts and labor
- **Power**
Gas - LP or NAT



**GAS
FIRED**

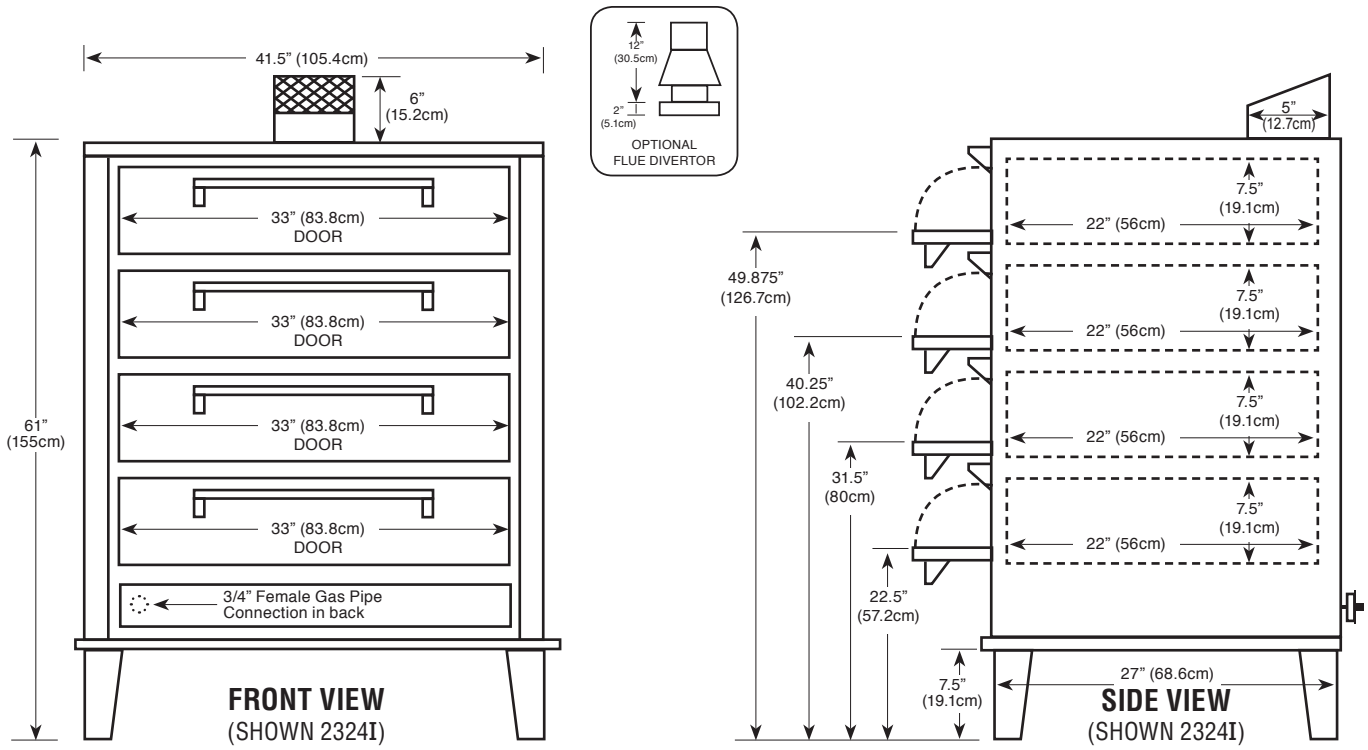


Steel Decks

MORE FOR LESS

More Heating Space per Floor Space
More Heating Capacity per Sales Dollar
More Performance per Gas Dollar

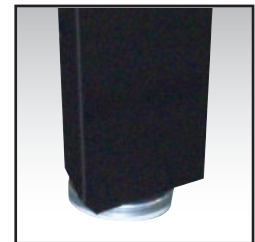




MODEL #	DECK			BODY			MAX BTU INPUT	SHIPPING WEIGHT	CAPACITY INTERIOR
	W	D	H	W	D	H			
2324I	33" 83.8cm	22" 56cm	7.5" 19.1cm	41.5" 105.4cm	27" 68.6cm	61" 155cm	60,000	550lbs 250kg	2904 sq. inches

Opening required for installation: 2324I = 27"

*Handles and doors can be removed to reduce depth for tight entries



Adjustable Legs

Durable Construction

The "2300 series" ovens are constructed on a 14-gauge, hot-rolled base with prime 20-gauge, cold-rolled top and sides. The interior is made of *Armco Type-1, 20-gauge, aluminized steel*. The shelves are made of 16-gauge, aluminized steel.

Energy Efficiency

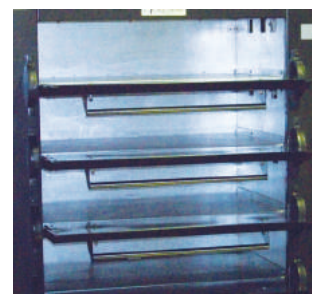
The Peerless multideck ovens are equipped with highly *efficient steel tubular burners*. The 2324I oven has four (4), tubular burners that supply 60,000 BTU's for great performance and fast recovery. All units are equipped with *modern safety pilots and thermostats*. All ovens come with separate on/off valve.

Space Savers

Because our unique construction and the fact the controls are under the door, the Peerless multideck ovens are by far the most space conservative ovens on the market today. The 2324I oven requires only 41.5". This frees up valuable workspace.

Capacity

Each of the four decks of the 2324I oven measures 33"x22"x7.5". The 2324I can easily handle four (4) 18"x26" trays, or a variety of other products.



Adjustable Dampers at each deck

