

MAXIMIZER

Electric Industrial Ovens

MODEL CE61IE

General Features:

- **Quality Construction**
for long life
- **Stainless Steel Front Standard**
Stainless top & sides available (T430)
- **Heavy Duty Steel Deck**
with flanged sides (16AL)
- **Full Range Digital Thermostat**
150°F - 550°F (65°C - 288°C)
Precise temperature control
- **Space Saver**
Only 50" wide
- **Stackable**
Multiple options for flexibility
- **Aluminized Interior Standard**
- **Solid State Relay**
Silent operation
- **Easily Serviceable**
Most controls can be replaced from the front of the unit
- **Power**
Electric
Single phase standard
Three phase optional
- **Specific Features**
of the CE61IE listed on back

Warranty:

- One year parts and labor



ELECTRIC

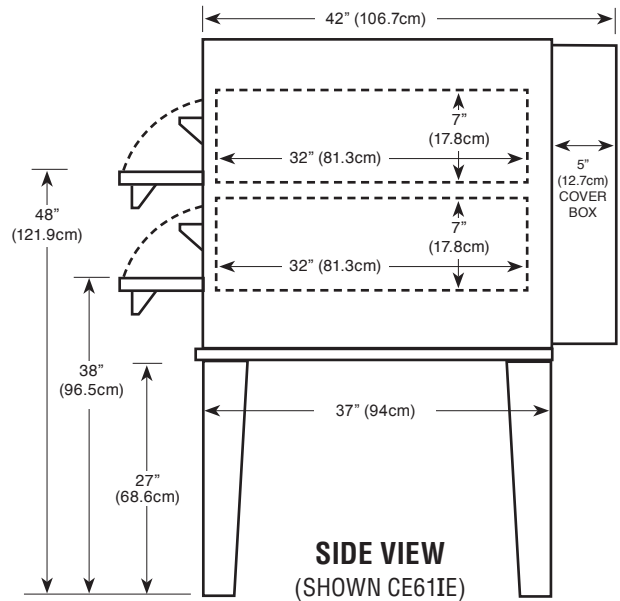
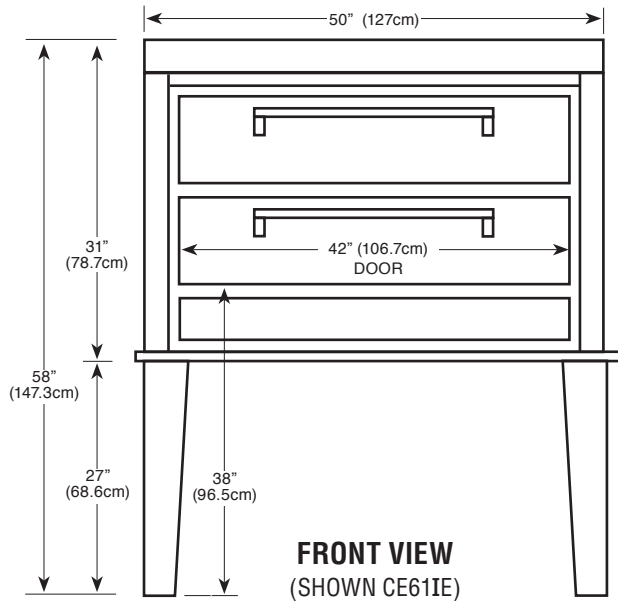


Steel Decks

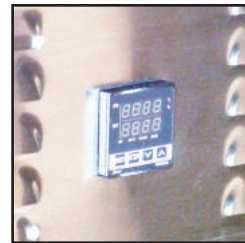
MORE FOR LESS

More Heating Space per Floor Space
More Heating Capacity per Sales Dollar
More Performance per Dollar

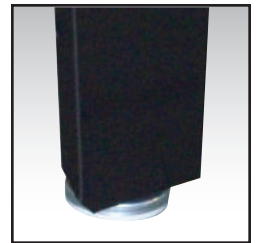




Floor space	50" (127cm) wide x 42" (106.7cm) deep* x 58" (147.3cm) high
Shelf size	42" (106.7cm) wide x 32" (81.3cm) deep x 7" (17.8cm) high
Shipping weight	550 lbs (249.6kg)
Capacity	Four 18"x26" trays per section
Electric	12KW - 220V single phase, 60 AMPS Optional three phase, 40 AMPS
Opening required for installation: 32"	
* Handle adds 2.5"(6.4cm) to depth	



Digital Electronic Controller



Adjustable Legs

Durable Construction

The CE61IE is built with *prime 20-gauge cold-rolled top and sides* with a 14-gauge base. The *interior is made of Armco Type 1, 20-gauge aluminized steel*. The CE61IE comes standard with stainless steel front, or optional all stainless steel finish. The stainless steel is made of high quality, 18-gauge 430 stainless; the door interior is 18 gauge stainless.

Energy Efficiency

The CE61IE is powered by six (6) 2,000w elements which *increases its efficiency and recovery rate*.

Capacity

The CE61IE deck size measures 42"x32"x7" (2). The CE61IE will hold four (4) 18"x26" trays. Heating time will vary according to product.

Space Saver

Because the controls are under the doors, the CE61IE requires *less installation space* than our competition. This enables you to free up valuable workspace. The actual width needed is mere 50" for two *42"x32" decks*, almost a foot less than the competition. The CE61IE *can convert into a CE62ISC by stacking*, either initially or after our business grows. This option gives you four 42"x32" decks in only 56" of space.

Design Plus

The CE61IE has the *controls in lower front for ease of operation and space savings*. This also places the controls in their own *air-conditioned area* so they are not affected by outside influences.

