

MAXIMIZER

Electric Industrial Ovens

General Features:

- **Quality Construction** for long life
- **Stainless Steel Front Standard**
Stainless top & sides available (T430)
- **Heavy Duty Steel Deck** with flanged sides (16AL)
- **Full Range Digital Thermostat** 150°F - 550°F (65°C - 288°C)
Precise temperature control
- **Space Saver**
Only 56" wide
- **Stackable**
Multiple options for flexibility
- **Aluminized Interior**
Standard
- **Solid State Relay**
Silent operation
- **Easily Serviceable**
Most controls can be replaced from the front of the unit
- **Power**
Electric
Single phase standard
Three phase optional
- **Specific Features** of the CE42IESC listed on back

Warranty:

- One year parts and labor



MODEL CE42IESC



ELECTRIC



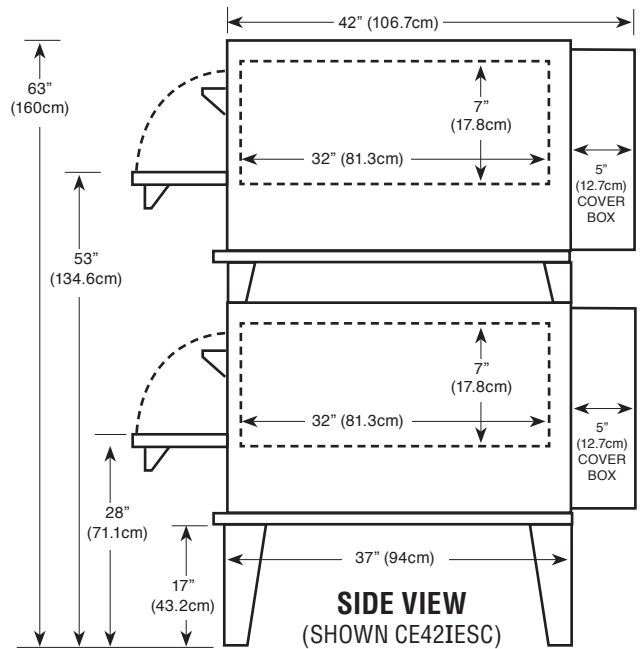
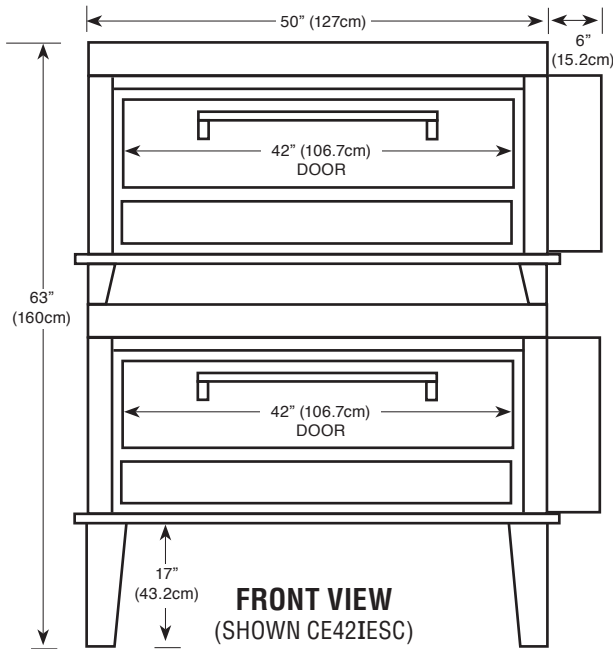
Steel Decks

MORE FOR LESS

More Heating Space per Floor Space
More Heating Capacity per Sales Dollar
More Performance per Dollar



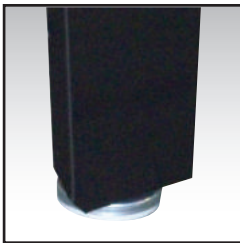
P.O. Box 859 • Sandusky, Ohio 44870 • (419) 625-4514 • FAX 625-4597



Floor space	56" (142.2cm) wide x 42" (106.7cm) deep* x 63" (160cm) high
Shelf size	42" (105.7cm) wide x 32" (81.3cm) deep x 7" (17.8cm) high
Shipping weight	1100 lbs (499kg)
Capacity	Four 18"x26" trays per oven
Electric	16 KW - 220V single phase, 100 AMPS Optional three phase, 60 AMPS
Two electrical connections for this model	
Opening required for installation: 22"	
	* Handle adds 2.5"(6.4cm) to depth



Digital Electronic Controller



Adjustable Legs

Durable Construction

The CE42ISC is built with *prime 20-gauge cold-rolled top and sides* with a 14-gauge base. The *interior is made of Armco Type 1, 20-gauge aluminized steel*. The CE42ISC comes standard with stainless steel front, or optional all stainless steel finish. The stainless steel is made of high quality, 18-gauge 430 stainless; the door interior is 18 gauge stainless.

Energy Efficiency

The CW42I is powered by eight (8) 2,000w elements which *increases efficiency and recovery rate*.

Capacity

The CE42ISC deck size measures 42"x32"x7" (2). The CE42ISC will hold four (4) 18"x26" trays. Heating time will vary according to product.

Space Saver

Because the controls are on the side, the CE42ISC requires *less installation space* than our competition. This enables you to free up valuable workspace. The actual width needed is a mere 56" for two 42"x32" decks, almost a foot less than the competition. The CE42ISC *can be converted in to a CE43ISC by stacking*, either initially or after your business grows. This option gives you three 42"x32" decks in only 56" of space.

Design Plus

The CE42ISC has the *controls on the side for ease of operation and space savings*. This also places the controls in their own *air-conditioned area* so they are not affected by outside influences.

