

Safety Showers – An Overview

What is a Safety Shower?

A safety shower is a plumbed-in fixture designed as a first response measure to wash-down personnel that have been splashed or doused in a hazardous liquid or substance.

What is an Eye Wash/Face Wash unit?

An eye wash is either a permanent plumbed-in fixture or mobile unit designed as a first response measure to wash the eyes and/or face of a person that has been splashed by a hazardous liquid or substance.

What is the difference between Safety Showers and Eye Wash Units?

Safety Showers drench and wash-down the whole body, whereas an eye/face wash are designed to rinse the eye and facial areas only.

Differences between free-standing, wall mounted and portable options?

Free-standing/Pedestal

Provides the ability to mount the unit in an open area so it can be near areas of risk and easily visible and accessible to surrounding users.

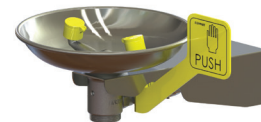


Left - Emergency Safety Shower with Hand Operated Eye Wash.

Right - Pedestal Mounted Emergency Hand and Foot Operated Eye Wash.

Wall mounted

Excellent for corridors, walkway areas or in situations where chemicals are being handled within a walled or workbench area.



Wall Mounted Emergency Hand Operated Eye Wash

Portable

Gravity fed and pocket eye wash units are great for mobile operators or smaller satellite sites and areas. Chemicals in the eye cause serious damage within 1-5 seconds. Washing eyes within a few seconds can be key in minimising eye damage.



Left - Portable Gravity Fed Eye Wash.

Right - Pocket Eye Wash Bottle - 200ml.

How does a Safety Shower work?

Upon arriving at the unit, the user either pulls down on a lever above and depending on the model, operates a hand lever or foot pedal to turn on the eye/face wash function.

What are the Safety Shower and Eye Wash regulations in New Zealand?

Enware's emergency systems have been independently tested and certified compliant to Australian Standard AS4775 sections 5.1 to 6.3 as well as ANSI Z358.1.

What is Vertech™ Technology?

This technology has been designed to create a Zero Velocity point. The reduced water velocity is gentle and effective, helping allow a greater amount of time in the flushing zone, which is important especially when cleansing the sensitive eyeballs from hazardous materials.

How do I install a Safety Shower?

Installation of Safety Showers, Eye and Eye/Face Wash Units showers should be in accordance with AS/NZS4775-2007 or ANSI Standard Z358.1-2009 - whichever is applicable to the installation.

Where should I put a Safety Shower?

Emergency Safety Showers and Eye/Face Wash Units should be available for immediate use. It shall take no longer than 10 seconds for an individual to reach the nearest facility. Factors that influence the location of emergency facilities include workplace lighting,

obstructions to the path of travel and the work environment.

It should be noted that some situations may warrant the placement of equipment significantly closer to the hazard. In these situations, such as exposure to highly corrosive chemicals, the proper distances should be selected based on the advice from appropriate consultants. For situations such as exposure to strong acids or alkalis, due consideration needs to be given to possible reaction between the flushing fluid and the chemical if the flushing fluid enters a bulk container of the chemical.

What other accessories are available?

[Emergency Shower and Eye Wash Location Sign](#)



[Emergency Eye Wash Location Sign](#)



Eye Wash Anti-Bacteria Water Preservative



Anti-freeze Valve



Anti-Static Shower Tester

Do Eyewash solutions expire?

The 1L Eye Wash bottles and Pocket Eye Wash solution have a 3-year shelf-life from time of manufacture.

What workplaces need a Safety Shower or Eye/Face Wash Unit?

Any workplace that uses hazardous substances that pose a significant risk to the health and safety of their workers should have a Safety Shower or Eye/Face Wash Unit available on site.

This may include, but is not limited to:

- Manufacturing plants
- Aviation sector
- Workplaces that transport for store dangerous goods
- Schools, universities, public swimming pools – areas that are not normally deemed high risk but have the potential to cause issues due to the range of chemicals they may store
- Hospitals, medical clinics and laboratories

Speed is critical in a first aid response to a hazardous substance injury. Any delay in treatment could cause serious or permanent injury.

Creating safer working environments

At Hazero our mission is zero hazards. Our extensive range of quality products will help you store, contain and control and clean-up dangerous goods and hazardous substances.

View our full range of Enware Safety Showers and Eye Wash Units [here](#).

Need help creating a safer working environment?

Contact our team today on 0800 688 844 or email us at info@hazero.co.nz. Our team are also available for on-site assessments across New Zealand, click [here](#) to request a site visit.

Content above falls under the Hazero Disclaimer, for more information click [here](#).