



3 HOODS
TO KEEP YOU WARM
+ NEW LONG SLEEVE POLO
+ NEW POLO COLOURS

2021

1528 MENS - 3528 KIDS

QUEENSCLIFF

320gm blended 80% cotton/ 20% polyester
Brushed inner jersey knit fleece
Full zip



1525 MENS - 3525 KIDS

TORQUAY

320gm blended 80% cotton/ 20% polyester
Brushed inner jersey knit fleece
Low pill



1527 MENS - 3527 KIDS

CRUSADER

280gm 100% Polyester
Brushed fleece
Raglan Sleeve



HOODS
TO KEEP YOU TOASTY



1315 MENS - 2315 LADIES

CLAREMONT

200gm 95% cotton
5% elastane pique knit.
Knitted collar and cuff.

INDEX

POLOS

1300	Mens Murray Polo	31
1301	Mens Premier Polo	33
1302	Mens Yarra Polo	22
1304	Mens Eureka Polo	34
1305	Mens Paterson Polo	26
1306	Mens Keira Polo	14
1307	Mens Botany Polo	16
1308	Mens Flinders Polo	20
1309	Mens Panorama Polo	29
1310	Mens Endeavour Polo	24
1311	Mens Tasman Polo	12
1312	Mens Hunter Polo	6
1314	Mens Lachlan Polo	9
1315	Mens Claremont Polo	10
1316	Mens Botany L/S Polo	18
2300	Ladies Murray Polo	30
2301	Ladies Premier Polo	32
2302	Ladies Yarra Polo	22
2304	Ladies Eureka Polo	35
2305	Ladies Paterson Polo	26
2306	Ladies Keira Polo	15
2307	Ladies Botany Polo	17
2308	Ladies Flinders Polo	20
2309	Ladies Panorama Polo	28
2310	Ladies Endeavour Polo	24
2311	Ladies Tasman Polo	12
2312	Ladies Hunter Polo	7
2314	Ladies Lachlan Polo	8
2315	Ladies Claremont Polo	11
3300	Kids Murray Polo	31
3301	Kids Premier Polo	33
3304	Kids Eureka Polo	35
3305	Kids Paterson Polo	27
3307	Kids Botany Polo	17
3309	Kids Panorama Polo	28
3311	Kids Tasman Polo	12
3312	Kids Hunter Polo	7
3316	Kids Botany L/S Polo	18

TEES

1204	Mens Eureka Tee	46
1207	Mens Botany Tee	42
1211	Mens Tasman Tee	38
2211	Ladies Tasman Tee	38
3204	Kids Eureka Tee	46

3207	Kids Botany Tee	42
3211	Kids Tasman Tee	38

SINGLETs

1101	Mens Premier Singlet	51
1104	Mens Eureka Singlet	49
1107	Mens Botany Singlet	44
1111	Mens Tasman Singlet	40
2101	Ladies Premier Singlet	50
2104	Ladies Eureka Singlet	48
2107	Ladies Botany Singlet	45
2111	Ladies Tasman Singlet	40
3101	Kids Premier Singlet	51
3104	Kids Eureka Singlet	49
3107	Kids Botany Singlet	45
3111	Kids Tasman Singlet	40

TRACKSUIT

1600	Mens Pongee Track Pant	57
1604	Mens Eureka Track top	54
1605	Mens Ripstop Track Pant	56
1611	Mens Tasman Tracktop	52
3600	Kids Pongee Track Pant	57
3604	Kids Eureka Tracktop	55
3605	Kids Ripstop Track Pant	56
3611	Kids Tasman Tracktop	53

SHORTS

1601	Mens Sport Shorts	60
1602	Mens Pongee Shorts	62
1603	Mens Rugby Shorts	58
3601	Kids Sport Shorts	61
3602	Kids Pongee Shorts	63
3603	Kids Rugby Shorts	59

BAGS

4000	Tasman Backpack	66
4001	Tasman Sports Bag	68

HOODIES

1506	Mens Paterson Hoodies	80
1509	Mens Huxley Hoodies	78
1525	Mens Torquay Hoodies	74
1527	Mens Crusader Hoodies	72
1528	Mens Queenscliff Hoodies	76
3506	Kids Paterson Hoodies	81
3509	Kids Huxley Hoodies	79
3525	Kids Torquay Hoodies	75

3527	Kids Crusader Hoodies	73
3528	Kids Queenscliff Hoodies	77

JACKETs

1512	Mens Selwyn Softshell Jkt	84
1513	Mens Olympus Softshell Jkt	87
1515	Mens Olympus Softshell Vest	88
1516	Mens Sheffield Jacket	90
1517	Mens Kingston Jacket	92
1518	Mens Napier Jacket	94
1519	Mens Parklands Jacket	97
1522	Mens Buller Puffer Jacket	99
1523	Mens Snowy Puffer Vest	100
1524	Mens Buffalo Jacket	102
2512	Ladies Selwyn Softshell Jkt	84
2513	Ladies Olympus Softshell Jkt	86
2515	Ladies Olympus Softshell Vest	89
2516	Ladies Sheffield Jacket	91
2517	Ladies Kingston Jacket	93
2518	Ladies Napier Jacket	95
2519	Ladies Parklands Jacket	96
2522	Ladies Buller Puffer Jkt	98
2523	Ladies Snowy Puffer Vest	101
3512	Kids Selwyn Softshell Jkt	85
3513	Kids Olympus Softshell Jkt	97
3524	Kids Buffalo Jacket	103

AP BUSINESS

1800	Mens Flat Front Pant	146
1801	Mens Pleated Front Pant	147
1900	Mens Henley	123
1901	Mens Toorak	127
1902	Mens Grange	131
1903	Mens Mosman	135
1905	Mens Belair	139
1906	Mens Bayview	143
1907	Mens Epsom	119
1908	Mens Devonport	115
1909	Mens Brighton	111
1910	Mens Kingswood	107
2800	Ladies Classic Pant	148
2802	Ladies Classic Skirt	149
2900	Ladies Henley	125
2901	Ladies Toorak	129
2902	Ladies Grange	133
2903	Ladies Mosman	137
2905	Ladies Belair	141

2906	Ladies Bayview	145
2907	Ladies Epsom	121
2908	Ladies Devonport	117
2909	Ladies Brighton	113
2910	Ladies Kingswood	109

SUBLIMATION

How To Measure	150
Polo	154
T-Shirt	168
Singlet	158
Rugby Fitted	160
Rugby Classic	162
AFL	164
Basketball	166
Soccer	168
Baseball	170
Netball	171
Cycling	174

QUICK GUIDE

POLOS	6
TEES	37
SINGLETs	37
BAGS	64
HOODIES	70
JACKETs	82
AP BUSINESS	104
HOW TO MEASURE	150
SUBLIMATION	152
PMS COLOURS	181



* 7XL available in black, white & navy only.

HUNTER POLO

1312 MENS Size: S-3XL+5XL+7XL* **2312 LADIES** Size: 6-26 **3312 KIDS** Size: 4-16



210gm 65% **DRWEAR™** polyester
moisture removal 35% cotton
pique knit, snag resistant,
easy care fabric.
(Loose pocket - mens only).

* 7XL available in black, white & navy only.

MENS	S	M	L	XL	XXL	3XL	5XL	7XL*			
1/2 CHEST	53	55.5	58	60.5	63	68	73	78			
variations +/- 1 cm (guide only)											
LADIES	6	8	10	12	14	16	18	20	22	24	26
1/2 CHEST	42.5	45	47.5	50	52.5	55	57.5	60	64.5	69.5	74.5
variations +/- 1 cm (guide only)											
KIDS	4	6	8	10	12	14	16				
1/2 CHEST	36	38	40	42	44	46	49				
variations +/- 1 cm (guide only)											



* 7XL available in black & navy only.

LACHLAN POLO

1314 MENS Size: S-3XL+5XL+7XL **2314 LADIES** Size: 6-26



160gm 100% **DRWEAR™** polyester
moisture removal honeycomb knit,
easy care fabric.
Knitted collar and cuff.
(Loose pocket - mens only).

* 7XL available in black & navy only.

MENS	S	M	L	XL	XXL	3XL	5XL	7XL*			
1/2 CHEST	53	55.5	58	60.5	63	68	73	78			
variations +/- 1 cm (guide only)											
LADIES	6	8	10	12	14	16	18	20	22	24	26
1/2 CHEST	42.5	45	47.5	50	52.5	55	57.5	60	64.5	69.5	74.5
variations +/- 1 cm (guide only)											

Disclaimer: Please note neon colours will vary on the actual garment due to the difficulty in matching with printing. Strongly suggest purchasing a sample for assurance.



black white navy kelly green



apple pink slate silver



cyan purple red royal



CLAREMONT POLO

1315 MENS Size: S-3XL+5XL **2315 LADIES** Size: 6-26



COTTON RICH

PIQUE KNIT

200gm 95% cotton 5% elastane pique knit.
Knitted collar and cuff.
(Loose pocket - mens only).

MENS	S	M	L	XL	XXL	3XL	5XL
1/2 CHEST	53	55.5	58	60.5	63	68	73
variations +/- 1 cm (guide only)							

LADIES	6	8	10	12	14	16	18	20	22	24	26
1/2 CHEST	42.5	45	47.5	50	52.5	55	57.5	60	64.5	69.5	74.5
variations +/- 1 cm (guide only)											



TASMAN POLO

1311 MENS Size: S-3XL+5XL 2311 LADIES Size: 4-26 3311 KIDS Size: 4-16



150gm 100% **DRWEAR™** polyester moisture removal microknit, snag resistant easy care fabric. Contrast under collar giving the illusion of a piped edge, with side panels and highlighted detail on sleeve and placket. (Loose pocket - mens only).

MENS	S	M	L	XL	XXL	3XL	5XL
1/2 CHEST	53	55.5	58	60.5	63	68	73

variations +/- 1 cm (guide only)

LADIES	4	6	8	10	12	14	16	18	20	22	24	26
1/2 CHEST	40	42.5	45	47.5	50	52.5	55	57.5	60	64.5	69.5	74.5

variations +/- 1 cm (guide only)

KIDS	4	6	8	10	12	14	16
1/2 CHEST	36	38	40	42	44	46	49

variations +/- 1 cm (guide only)

Disclaimer: Please note neon colours will vary on the actual garment due to the difficulty in matching with printing. Strongly suggest purchasing a sample for assurance.





black white navy slate pacific blue royal (NEW) red (NEW)

1306 MENS Size: S-3XL+5XL **2306 LADIES** Size: 6-26



180gm 80% polyester **DRWEAR™** 20% cotton moisture removal cottonback pique knit, easy care fabric, raglan sleeve, knitted collar and three-button placket.
(Loose pocket mens only).

MENS	S	M	L	XL	XXL	3XL	5XL				
1/2 CHEST	53	55.5	58	60.5	63	68	73				
variations +/- 1 cm (guide only)											
LADIES	6	8	10	12	14	16	18	20	22	24	26
1/2 CHEST	42.5	45	47.5	50	52.5	55	57.5	60	64.5	69.5	74.5
variations +/- 1 cm (guide only)											



black

white

navy



royal

red

sky



maroon

gold

bottle



BOTANY POLO

1307 MENS Size: S-3XL+5XL **2307 LADIES** Size: 6-26 **3307 KIDS** Size: 4-16



160gm 100% polyester **DRWEAR™** mini-waffle knit, with moisture removal technology, easy care fabric and self fabric collar and a three-button placket. (Loose pocket - mens only).

MENS	S	M	L	XL	XXL	3XL	5XL
1/2 CHEST	53	55.5	58	60.5	63	68	73

variations +/- 1 cm (guide only)

LADIES	6	8	10	12	14	16	18	20	22	24	26
1/2 CHEST	42.5	45	47.5	50	52.5	55	57.5	60	64.5	69.5	74.5

variations +/- 1 cm (guide only)

KIDS	4	6	8	10	12	14	16
1/2 CHEST	36	38	40	42	44	46	49

variations +/- 1 cm (guide only)



black

white



navy

royal



red

gold



BOTANY L/S POLO

1316 MENS Size: S-3XL+5XL 3316 KIDS Size: 4-16



MINI WAFFLE



ANTI-BACTERIAL TREATMENT

160gm 100% polyester **DRWEAR™** mini-waffle knit, with moisture removal technology, easy care fabric and self fabric collar and a three-button placket. (Loose pocket - mens only).

MENS	S	M	L	XL	XXL	3XL	5XL
1/2 CHEST	53	55.5	58	60.5	63	68	73
variations +/- 1 cm (guide only)							
KIDS	4	6	8	10	12	14	16
1/2 CHEST	36	38	40	42	44	46	49
variations +/- 1 cm (guide only)							



apple/black black/red black/teal black/white canary/black



navy/white orange/slate purple/white red/white royal/white



slate/black teal/black white/navy white/black hot pink/white (L)

(L) = ladies only

FLINDERS POLO

1308 MENS Size: S-3XL+5XL 2308 LADIES Size: 6-26



155gm 100% **DRWEAR™** polyester moisture removal birdseye knit, easy care fabric, signature knit collar and arm band, three-button placket.
(Loose pocket - mens only).

MENS	S	M	L	XL	XXL	3XL	5XL
1/2 CHEST	53	55.5	58	60.5	63	68	73

variations +/- 1 cm (guide only)

LADIES	6	8	10	12	14	16	18	20	22	24	26
1/2 CHEST	42.5	45	47.5	50	52.5	55	57.5	60	64.5	69.5	74.5

variations +/- 1 cm (guide only)



white/ navy navy/ white navy/ gold navy/ red

black/ white black/ gold black/ red red/ white

sky/ navy royal/ white teal/ black hot pink/ white (L)

(L) = ladies only

YARRA POLO

1302 MENS Size: XS-3XL+5XL **2302 LADIES** Size: 8-10 ~ 24-26



160gm 100% polyester **DRWEAR™** mini-waffle knit, with moisture removal technology, easy care fabric, self fabric V neck collar for ladies and contrast piping on the placket and sleeve.
 (Loose pocket - mens only).
 PLEASE NOTE: Size XS available while stocks last.

MENS	XS	S	M	L	XL	XXL	3XL	5XL
1/2 CHEST	50.5	53	55.5	58	60.5	63	68	73
variations +/- 1 cm (guide only)								
LADIES	8-10	12-14	16-18	20-22	24-26			
1/2 CHEST	43	48	53	60	67			
variations +/- 1 cm (guide only)								



ENDEAVOUR POLO

1310 MENS Size: S-3XL+5XL 2310 LADIES Size: 6-26



155gm 100% **DRWEAR™** polyester moisture removal birdseye knit, easy care fabric, traditional piping and self fabric collar.

Ladies has a V neck johnny collar.
Mens has a three-button placket.
(Loose pocket - mens only).

MENS	S	M	L	XL	XXL	3XL	5XL				
1/2 CHEST	53	55.5	58	60.5	63	68	73				
variations +/- 1 cm (guide only)											
LADIES	6	8	10	12	14	16	18	20	22	24	26
1/2 CHEST	42.5	45	47.5	50	52.5	55	57.5	60	64.5	69.5	74.5
variations +/- 1 cm (guide only)											



Available in mens & ladies only



black/white (ML) black/red (ML) black/ash (ML) black/gold (ML) black/royal (ML) black/teal (ML) black/org. (ML) white/black (ML) white/navy (ML) navy/red (ML)

(ML) = mens & ladies only

Available in mens, ladies & kids



navy/white navy/gold navy/sky pacific blue/white maroon/gold



red/white royal/white purple/white gold/black side view



PATERSON POLO

1305 MENS Size: S-3XL+5XL 2305 LADIES Size: 6-26 3305 KIDS Size: 4-16



180gm 80% polyester **DRWEAR™** 20% cotton moisture removal, cottonback pique knit, easy care fabric with a self fabric collar and contrast panels. Three-button placket, kids sizes 4, 6 and 8 only have two buttons. (Loose pocket - mens only).

MENS	S	M	L	XL	XXL	3XL	5XL				
1/2 CHEST	53	55.5	58	60.5	63	68	73				
variations +/- 1 cm (guide only)											
LADIES	6	8	10	12	14	16	18	20	22	24	26
1/2 CHEST	42.5	45	47.5	50	52.5	55	57.5	60	64.5	69.5	74.5
variations +/- 1 cm (guide only)											
KIDS	4	6	8	10	12	14	16				
1/2 CHEST	36	38	40	42	44	46	49				
variations +/- 1 cm (guide only)											



Available in mens & ladies only



Available in mens, ladies & kids



PANORAMA POLO

1309 MENS Size: S-3XL+5XL 2309 LADIES Size: 6-26 3309 KIDS Size: 4-16



180gm 80% polyester **DRWEAR™** 20% cotton moisture removal, cottonback pique knit, easy care fabric and traditional knit collar with contrast stripes, panels and piping. Three-button placket on mens and a two-button placket for kids sizes 4, 6 and 8. (Loose pocket - mens only).

MENS	S	M	L	XL	XXL	3XL	5XL				
1/2 CHEST	53	55.5	58	60.5	63	68	73				
variations +/- 1 cm (guide only)											
LADIES	6	8	10	12	14	16	18	20	22	24	26
1/2 CHEST	42.5	45	47.5	50	52.5	55	57.5	60	64.5	69.5	74.5
variations +/- 1 cm (guide only)											
KIDS	4	6	8	10	12	14	16				
1/2 CHEST	36	38	40	42	44	46	49				
variations +/- 1 cm (guide only)											



white/navy/ ashe white/ red/ ashe white/ royal/ ashe sky/ navy/ ashe



navy/ red/ white navy/ white/ ashe navy/ gold/ ashe royal/ white/ ashe



black/ white/ ashe black/ org/ white black/ red/ white black/ ashe/ white red/ black/ white bottle/ white/ ashe



MURRAY POLO

1300 MENS Size: S-3XL+5XL **2300 LADIES** Size: 8-26 **3300 KIDS** Size: 6-16



160gm 100% polyester **DRWEAR™** moisture removal, mini-waffle knit easy care fabric, traditional knit collar with contrast stripes, curved sleeve panel and a 3 button placket.
(Loose pocket - mens only).

MENS	S	M	L	XL	XXL	3XL	5XL			
1/2 CHEST	52	54.5	57	59.5	62	64.5	72			
variations +/- 1 cm (guide only)										
LADIES	8	10	12	14	16	18	20	22	24	26
1/2 CHEST	45	47.5	50	52.5	55	57.5	60	64.5	69.5	74.5
variations +/- 1 cm (guide only)										
KIDS	6	8	10	12	14	16				
1/2 CHEST	38	40	42	44	46	49				
variations +/- 1 cm (guide only)										



PREMIER POLO

1301 MENS Size: XS-3XL+5XL

2301 LADIES Size: 8-26

3301 KIDS Size: 6-16



160gm 100% polyester **DRWEAR™** mini-waffle knit, with moisture removal technology, easy care fabric, self fabric collar with piping highlights, three-button placket, contrast piping and panels.

(Loose pocket - mens only).

Styled V neck for ladies

PLEASE NOTE: Size XS available while stocks last.

(After that, suggest going to size K16).

MENS	XS	S	M	L	XL	XXL	3XL	5XL		
1/2 CHEST	50.5	53	55.5	58	60.5	63	68	73		
variations +/- 1 cm (guide only)										
LADIES	8	10	12	14	16	18	20	22	24	26
1/2 CHEST	45	47.5	50	52.5	55	57.5	60	64.5	69.5	74.5
variations +/- 1 cm (guide only)										
KIDS	6	8	10	12	14	16				
1/2 CHEST	38	40	42	44	46	49				
variations +/- 1 cm (guide only)										



EUREKA POLO



1304 MENS Size: S-3XL+5XL **2304 LADIES** Size: 8-26 **3304 KIDS** Size: *4-16

160gm 100% polyester **DRWEAR™** mini-waffle knit, with moisture removal technology, easy care fabric, traditional knit collar with contrast signature, coloured highlight piping and a three-button placket.
 (Loose pocket - mens only).
 Hi Viz mens polo - has pre attached square pocket.
 Ladies placket has 4 buttons.

*NOTE: Size 4 available in white/royal, bottle/white, bottle/gold, maroon/white, navy/white, navy/gold, red/white, royal/white, royal/gold, royal/red, sky/navy

MENS	S	M	L	XL	XXL	3XL	5XL
1/2 CHEST	53	55.5	58	60.5	63	68	73

variations +/- 1 cm (guide only)

LADIES	8	10	12	14	16	18	20	22	24	26
1/2 CHEST	45	47.5	50	52.5	55	57.5	60	64.5	69.5	74.5

variations +/- 1 cm (guide only)

KIDS	*4	6	8	10	12	14	16
1/2 CHEST	36	38	40	42	44	46	49

variations +/- 1 cm (guide only)



navy/ white/ ashe* navy/ gold/ ashe* navy/ red/ ashe royal/ gold/ ashe* royal/ white/ ashe* royal/ red/ white* red/ white/ ashe* red/ gold/ white sky/ navy/ ashe*



white/ black/ ashe white/ navy/ ashe white/ royal/ ashe* white/ red/ ashe black/ white/ ashe black/ gold/ ashe black/ org./ ashe black/ red/ ashe maroon/ wt./ ashe*



bottle/ white/ ashe* bottle/ gold/ ashe* hot pink/ black/ wt org./ charcoal/ wt choc./ gold/ wt. (M,K) Hi Viz orange/ navy (M) Hi Viz yellow/ navy (M)

(M,K) = mens & kids only
 (M) = mens only



TEES
SINGLET
TRACK TOPS
PANTS &
SHORTS



Disclaimer: Please note neon colours will vary on the actual garment due to the difficulty in matching with printing. Strongly suggest purchasing a sample for assurance.

TASMAN TEE

1211 MENS Size: S-3XL+5XL **2211 LADIES** Size: 4-20 **3211 KIDS** Size: 4-16



150gm 100% polyester **DRWEAR™** moisture removal microknit, snag resistant easy care fabric. Mens and kids have round self fabric neck bind, V neck self fabric neck bind for ladies. Contrast side panels with highlight details on sleeve and back neck reflective tab for ear phones.

MENS	S	M	L	XL	XXL	3XL	5XL
1/2 CHEST	53	55.5	58	60.5	63	68	73

variations +/- 1 cm (guide only)

LADIES	4	6	8	10	12	14	16	18	20
1/2 CHEST	40	42.5	45	47.5	50	52.5	55	57.5	60

variations +/- 1 cm (guide only)

KIDS	4	6	8	10	12	14	16
1/2 CHEST	36	38	40	42	44	46	49

variations +/- 1 cm (guide only)





Disclaimer: Please note neon colours will vary on the actual garment due to the difficulty in matching with printing. Strongly suggest purchasing a sample for assurance.

TASMAN SINGLET

1111 MENS Size: S-3XL+5XL 2111 LADIES Size: 4-20 3111 KIDS Size: 4-16



150gm 100% polyester **DRWEAR™** moisture removal microknit, snag resistant easy care fabric. Mens and kids have round self fabric neck bind, V neck self fabric neck bind for ladies. Contrast side panels with highlight details on sleeve and back neck reflective tab for ear phones.

MENS	S	M	L	XL	XXL	3XL	5XL
1/2 CHEST	51	53.5	56	58.5	61	63.5	68

variations +/- 1 cm (guide only)

LADIES	4	6	8	10	12	14	16	18	20
1/2 CHEST	38.5	41	43.5	46	48.5	51	53.5	56.5	59.5

variations +/- 1 cm (guide only)

KIDS	4	6	8	10	12	14	16
1/2 CHEST	35	37	39	41	43	45	48

variations +/- 1 cm (guide only)





white black navy



royal red sky



maroon gold bottle



BOTANY TEE

1207 MENS Size: S-3XL+5XL **3207 KIDS** Size: 4-16



160gm 100% polyester **DRWEAR™** mini-waffle knit, with moisture removal technology, easy care fabric and self fabric binding on armhole and neck.
Mens and kids have round self fabric neck bind.

MENS	S	M	L	XL	XXL	3XL	5XL
1/2 CHEST	53	55.5	58	60.5	63	68	73
variations +/- 1 cm (guide only)							
KIDS	4	6	8	10	12	14	16
1/2 CHEST	36	38	40	42	44	46	49
variations +/- 1 cm (guide only)							



white black navy royal (M,K) red (M,K) sky (M,K) maroon (M,K) gold (M,K) bottle (M,K)

(M,K) = mens & kids only

BOTANY SINGLET

1107 MENS Size: S-3XL+5XL **2107 KIDS** Size: 6-20 **3107 KIDS** Size: 4-16



MINI WAFFLE

160gm 100% polyester **DRWEAR™** mini-waffle knit, with moisture removal technology, easy care fabric and self fabric binding on armhole and neck.

Mens and kids have round self fabric neck bind, V neck self fabric neck bind for ladies.

MENS	S	M	L	XL	XXL	3XL	5XL
1/2 CHEST	51	53.5	56	58.5	61	63.5	68.5

variations +/- 1 cm (guide only)

LADIES	6	8	10	12	14	16	18	20
1/2 CHEST	41	43.5	46	48.5	51	53.5	56.5	59.5

variations +/- 1 cm (guide only)

KIDS	4	6	8	10	12	14	16
1/2 CHEST	35	37	39	41	43	45	48

variations +/- 1 cm (guide only)



EUREKA TEE

1204 MENS Size: S-3XL+5XL 3204 KIDS Size: 6-16



160gm 100% polyester **DRWEAR™** mini-waffle knit, with moisture removal technology, easy care fabric, self fabric neck bind and contrast colour highlights.

MENS	S	M	L	XL	XXL	3XL	5XL
1/2 CHEST	53	55.5	58	60.5	63	68	73
variations +/- 1 cm (guide only)							
KIDS	6	8	10	12	14	16	
1/2 CHEST	38	40	42	44	46	49	
variations +/- 1 cm (guide only)							



EUREKA SINGLET

1104 MENS Size: S-3XL+5XL **2104 KIDS** Size: 8-20 **3104 KIDS** Size: 6-16



160gm 100% polyester **DRWEAR™** mini-waffle knit, with moisture removal technology, easy care fabric, self fabric binding on armhole and neck with contrast colour highlights.
Mens and kids have round self fabric neck bind, V neck self fabric neck bind for ladies.

MENS	S	M	L	XL	XXL	3XL	5XL
1/2 CHEST	51	53.5	56	58.5	61	63.5	68.5
variations +/- 1 cm (guide only)							
LADIES	8	10	12	14	16	18	20
1/2 CHEST	43.5	46	48.5	51	53.5	56.5	59.5
variations +/- 1 cm (guide only)							
KIDS	6	8	10	12	14	16	
1/2 CHEST	37	39	41	43	45	48	
variations +/- 1 cm (guide only)							



navy/white navy/gold navy/red black/white



black/gold black/red black/ash black/teal

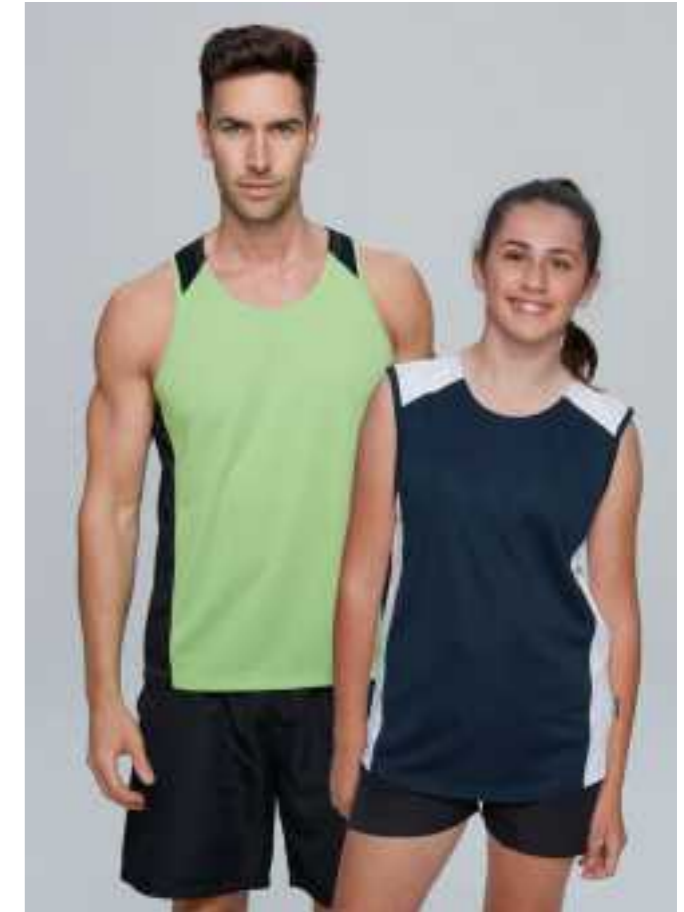


purple/wht. apple/black bottle/gold burg/white



white/navy ash/black royal/gold royal/white red/white hot pink/wht. (L) side view (L)

(L) = ladies only



PREMIER SINGLET

1101 MENS Size: S-3XL+5XL **2101 KIDS** Size: 8-20 **3101 KIDS** Size: 6-16



160gm 100% polyester **DRWEAR™** mini-waffle knit, with moisture removal technology, easy care fabric, contrast panels and highlights, and rounded neck. Mens and kids have round self fabric neck bind, V neck self fabric neck bind for ladies.

MENS	S	M	L	XL	XXL	3XL	5XL
1/2 CHEST	51	53.5	56	58.5	61	63.5	68.5
variations +/- 1 cm (guide only)							
LADIES	8	10	12	14	16	18	20
1/2 CHEST	43.5	46	48.5	51	53.5	56.5	59.5
variations +/- 1 cm (guide only)							
KIDS	6	8	10	12	14	16	
1/2 CHEST	37	39	41	43	45	48	
variations +/- 1 cm (guide only)							



TASMAN TRACKTOP

1611 MENS Size: S-3XL+5XL **3611 KIDS** Size:4-16



100% polyester soft feel ripstop, contrast colour panels, 2 external zipped pockets, 2 internal pockets, stand up collar, jersey interlock lining and internal zip for easy decoration.

MENS	S	M	L	XL	XXL	3XL	5XL
1/2 CHEST	60	62	64	66	68	70	74
variations +/- 1 cm (guide only)							
KIDS	4	6	8	10	12	14	16
1/2 CHEST	43	45	48	51	54	57	60
variations +/- 1 cm (guide only)							



black/white black/gold black/orange black/red navy/white navy/sky navy/red



navy/gold royal/white royal/red royal/gold



bottle/white maroon/white red/white side view



EUREKA TRACKTOP

1604 MENS Size: S-3XL+5XL **3604 KIDS** Size:6-16

100% polyester Pongee (Chinese silk), contrast colour panels with piping, 2 zipped pockets, stand up collar, jersey interlock lining, internal zip for easy decoration.

MENS	S	M	L	XL	XXL	3XL	5XL
1/2 CHEST	60	62	64	66	68	70	74
variations +/- 1 cm (guide only)							
KIDS	6	8	10	12	14	16	
1/2 CHEST	45	48	51	54	57	60	
variations +/- 1 cm (guide only)							

RIPSTOP TRACK PANT



PONGEE TRACK PANT



RIPSTOP TRACK PANT

1605 MENS Size: S-3XL+5XL **3605 KIDS** Size: 4-16

100% polyester ripstop, with two side zipped pockets, elasticised waist with drawstring, jersey interlock lining and zippered leg opening with taffeta lining.

*Ripstop trackpants coordinates with Tasman Tracktop

MENS	S	M	L	XL	XXL	3XL	5XL
1/2 WAIST RELAXED	31.5	33	34.5	37	40	48	58
OUTSIDE LEG	101	104	107	110	113	116	121
variations +/- 1 cm (guide only)							
KIDS	4	6	8	10	12	14	16
1/2 WAIST RELAXED	28	30	32	34	36	38	40
OUTSIDE LEG	65	70	80	85	90	97	105
variations +/- 1 cm (guide only)							

PONGEE TRACK PANT

1600 MENS Size: S-3XL+5XL **3600 KIDS** Size: 4-16

100% polyester Pongee (Chinese silk), with two side zipped pockets, elasticised waist with drawstring, jersey interlock lining and zippered leg opening with taffeta lining.

*Pongee trackpants coordinates with Eureka Tracktop

MENS	S	M	L	XL	XXL	3XL	5XL
1/2 WAIST RELAXED	31.5	33	34.5	37	40	48	58
OUTSIDE LEG	101	104	107	110	113	116	121
variations +/- 1 cm (guide only)							
KIDS	4	6	8	10	12	14	16
1/2 WAIST RELAXED	28	30	32	34	36	38	40
OUTSIDE LEG	70	75	80	85	90	95	100
variations +/- 1 cm (guide only)							



RUGBY SHORT

1603 MENS Size: XXS-7XL **3603 KIDS** Size: 4-16

100% polyester twill.
Bar tacked at crotch seam.
elasticated waistband with
drawcord for a secure fit.

MENS	XXS	XS	S	M	L	XL	XXL	3XL	4XL	5XL	6XL	7XL
	28	30	32	34	36	38	40	42	44	46	48	50
1/2 WAIST RELAXED	32	34	36	38	40	42	44	46	48	50	52	54
OUTSIDE LEG	30.5	31.5	33	34	35.5	36.5	38	39	40.5	41.5	43	44

variations +/- 1 cm (guide only)

KIDS	4	6	8	10	12	14	16
1/2 WAIST RELAXED	26	27	28	29	30	31	32
OUTSIDE LEG	26	27	28	29	30	31	32

variations +/- 1 cm (guide only)



charcoal* black navy royal (M) bottle red (M)

(M) = mens only (K) = kids only *Charcoal not available in size 4

SPORTS SHORT

1601 MENS Size: S-3XL+5XL **3601 KIDS** Size:4-16

160gm 100% polyester **DRWEAR™**
 mini-waffle knit, with moisture removal
 technology, easy care fabric, elasticised
 waist with drawstring and two side
 pockets.

MENS	S	M	L	XL	XXL	3XL	5XL
1/2 WAIST RELAXED	34	36.5	39	41.5	44	46.5	51.5
OUTSIDE LEG LENGTH	53	54	55	56	57	58	60
variations +/- 1 cm (guide only)							
KIDS	4*	6	8	10	12	14	16
1/2 WAIST RELAXED	26	28	30	32	34	36	38
OUTSIDE LEG LENGTH	33	35	37	39	41	43	45
variations +/- 1 cm (guide only)							



black navy slate royal (K) maroon (K) bottle (K) red (K)

(K) = kids only

PONGEE SHORT

1602 MENS Size: S-3XL+5XL **3602 KIDS** Size: 4-16

100% polyester Pongee (Chinese silk) shorts, with one back zipped pocket and two side pockets.

MENS	S	M	L	XL	XXL	3XL	5XL
1/2 WAIST RELAXED	34	36.5	39	41.5	44	46.5	51.5
OUTSIDE LEG LENGTH	44	45	46	47	48	49	51
variations +/- 1 cm (guide only)							
KIDS	4	6	8	10	12	14	16
1/2 WAIST RELAXED	26	28	30	32	34	36	38
OUTSIDE LEG LENGTH	26	28	30	32	34	36	38
variations +/- 1 cm (guide only)							



BAG RANGE





TASMAN BACKPACK

4000 BACKPACK

Features:

- 600d polyester
- no10. heavy duty zips
- elasticised mesh pockets on both sides
- padded shoulder straps
- contour padded back
- capacity: 28 litres
- w: 31cm x h: 44.5cm x d: 20.5cm



black/ cyan black/ neon green black/ gold black/ red



black/ white bottle/ gold slate/ neon green slate/ neon orange



cyan/ neon green cyan/ black red/ white royal/ white



maroon/ white navy/ red navy/ sky navy/ white navy/ gold



solid navy solid black



cyan/ black



ID card holder



internal organiser



rubber feet

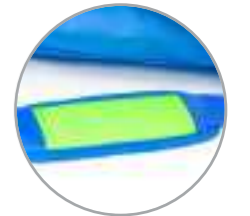


TASMAN SPORTS BAG

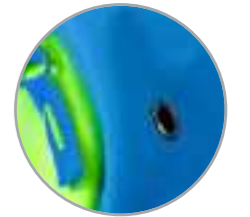
4001 SPORTS BAG

Features:

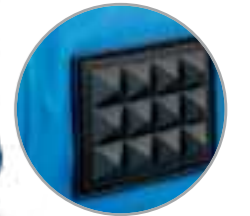
- 600d polyester
- no10. heavy duty zips
- large side compartment with ventilation holes
- elasticised mesh pocket on one side
- w: 27.5cm x h: 31.5cm x d: 58cm
- contrast padded shoulder strap
- capacity: 50 litres



printable flat strap guard



ventilation holes



rubber feet

cyan/ neon green



black/ cyan

black/ neon green

black/ gold

black/ red

black/ white

slate/ neon orange



slate/ neon green

cyan/ black

navy/ sky

navy/ white

navy/ red

navy/ gold



bottle/ gold

maroon/ white

red/ white

royal/ white

solid black

solid navy



HOODIES





CRUSADER HOODIE

100% 
POLYESTER

1527 MENS Size: XS-3XL+5XL + (7XL black & navy only) **3527 KIDS** Size: 4-16



280gm 100% Polyester brushed fleece
Raglan Sleeve
3 piece hood for comfort
Flat tie with metallic aglet (mens only)

MENS	XS	S	M	L	XL	XXL	3XL	5XL	7XL
1/2 CHEST	53.5	56	58.5	61	63.5	66	71	76	81
variations +/- 1 cm (guide only)									
KIDS	4	6	8	10	12	14	16		
1/2 CHEST	41	43	45	47	49	51	53		
variations +/- 1 cm (guide only)									



black navy bottle



maroon red royal



charcoal marle grey marle



TORQUAY HOODIE

80% 
COTTON

1525 MENS Size: XS-3XL+5XL + (7XL black & navy only)

3525 KIDS Size: 4-16



COTTON RICH

320gm blended 80% cotton/ 20% polyester

Brushed inner jersey knit fleece

Low pill

Flat tie cord (mens only)

MENS	XS	S	M	L	XL	XXL	3XL	5XL	7XL
1/2 CHEST	53.5	56	58.5	61	63.5	66	71	76	81
variations +/- 1 cm (guide only)									
KIDS	4	6	8	10	12	14	16		
1/2 CHEST	41	43	45	47	49	51	53		
variations +/- 1 cm (guide only)									



black

charcoal marle

navy

QUEENSCLIFF HOODIE

80% 
COTTON

1528 MENS Size: XS-3XL+5XL + (7XL black & navy only)

3528 KIDS Size: 4-16



COTTON RICH

320gm blended 80% cotton/ 20% polyester

Brushed inner jersey knit fleece

Full zip

Low pill

Flat tie cord (mens only)

MENS	XS	S	M	L	XL	XXL	3XL	5XL	7XL
1/2 CHEST	53.5	56	58.5	61	63.5	66	71	76	81
variations +/- 1 cm (guide only)									
KIDS	4	6	8	10	12	14	16		
1/2 CHEST	41	43	45	47	49	51	53		
variations +/- 1 cm (guide only)									



black/ kawa green/ white black/ elec. purple/ white black/ elec. royal/ white side view



black/ elec. orange/ white black/ red/ white black/ red/ gold side view



black/ white/ ashe black/ ashe/ white navy/ ashe/ white navy/ white/ ashe navy/ red/ gold red/ black/ white slate/ black/ white royal/ white/ ashe side view



HUXLEY HOOD

1509 MENS Size: XS-3XL+5XL **3509 KIDS** Size: 4-16

300gm blended 50% cotton 50% polyester brushed inner jersey knit fleece, low pill, with contrast panels and hood lining, hood stripe, front piping and flat tie cord (mens only).

MENS	XS	S	M	L	XL	XXL	3XL	5XL
1/2 CHEST	54.5	56	58.5	61	63.5	66	71	76
SHOULDER TO HEM	69	73	75	77	79	81	83	91
variations +/- 1 cm (guide only)								
KIDS	4	6	8	10	12	14	16	
1/2 CHEST	41	43	45	47	49	51	53	
SHOULDER TO HEM	53	55	57	60	62	64	66	
variations +/- 1 cm (guide only)								



black/ white black/ red black/ gold



black/ orange red/ white royal/ white



navy/ white navy/ gold navy/ sky navy/ red side



PATERSON HOOD

1506 MENS Size: XS-3XL+5XL **3506 KIDS** Size: 4-16

300gm blended 50% cotton 50% polyester brushed inner jersey knit fleece, low pill, with contrast panels and hood lining and flat tie cord (mens only).

MENS	XS	S	M	L	XL	XXL	3XL	5XL
1/2 CHEST	54.5	56	58.5	61	63.5	66	71	76
SHOULDER TO HEM	69	73	75	77	79	81	83	91
variations +/- 1 cm (guide only)								
KIDS	4	6	8	10	12	14	16	
1/2 CHEST	41	43	45	47	49	51	53	
SHOULDER TO HEM	53	55	57	60	62	64	66	
variations +/- 1 cm (guide only)								



AP OUTERWEAR

We have gone the 'extra mile' to bring you this range of top quality AP Outer Wear. To create this range, we've used only top quality fabrics combined with expert workmanship to bring these retail influenced styles.

What does "WP" "BP" mean?

Fabric manufacturers typically describe the waterproof breathability of fabrics using two numbers.

The first is in millimeters (mm) and is a measure of how waterproof a fabric is. In the case of a 5k or 5,000 mm fabric, if you put a square tube with inner dimensions of 2.5cm x 2.5cm over a piece of fabric, you could fill it with water to a height of 5,000 mm before water would begin to leak through. The higher the number, the more waterproof the fabric.

The second number is a measure of how breathable the fabric is - this is normally expressed in terms of how many grams (g) of water vapor can pass through a square meter (m²) of the fabric from the inside to the outside in a 24 hour period. In the case of a 5k (5,000g) fabric, this would be 5,000 grams. The higher the number, the more breathable the fabric is.

JACKETS



SELWYN SOFTSHELL JACKET



* MENS 6XL-8XL & LADIES 24 & 26
AVAILABLE ONLY IN BLACK & NAVY

SELWYN SOFTSHELL JACKET

1512 MENS Size: S-3XL+5XL-8XL **2512 LADIES** Size: 8-26 **3512 KIDS** Size: 6-16

Fabric:
320gm 2-layer performance softshell
Outer 95% polyester 5% elastane
Inner 100% polyester bonded fleece

Features:
Light water repellent and wind resistant finish
2 side zip pockets
Fleeced chin guard
Shaped back tail for added warmth and modesty
Tone on tone changeable zip pullers

MENS	S	M	L	XL	2XL	3XL	5XL	6XL*	7XL*	8XL*
1/2 CHEST	54	56.5	59	61.5	64	66.5	71.5	75	78.5	82

variations +/- 1 cm (guide only)

LADIES	8	10	12	14	16	18	20	22	24*	26*
1/2 CHEST	48	50.5	53	55.5	58	60.5	63	65.5	68	70.5

variations +/- 1 cm (guide only)

KIDS	6	8	10	12	14	16
1/2 CHEST	40	43	46	49	52	55

variations +/- 1 cm (guide only)



bottle maroon cyan



green red royal



slate black* navy*



OLYMPUS SOFTSHELL JACKET

1513 MENS Size: S-3XL+5XL-8XL **2513 LADIES** Size: 8-26 **3513 KIDS** Size: 6-16

Fabric:
320gm 3-layer performance softshell
Outer 95% polyester 5% elastane
Inner 100% polyester bonded fleece
WP 3000 | BP 3000*

Features:
Medium water repellent and wind resistant finish
2 side zip pockets and 1 chest zip pocket
Concealed hood
Shaped back tail for added warmth and modesty
Tone on tone changeable zip pullers.

* WP 3000 | BP 3000 refer to page 90.

MENS	S	M	L	XL	2XL	3XL	5XL	6XL*	7XL*	8XL*
1/2 CHEST	54	56.5	59	61.5	64	66.5	71.5	75	78.5	82

variations +/- 1 cm (guide only)

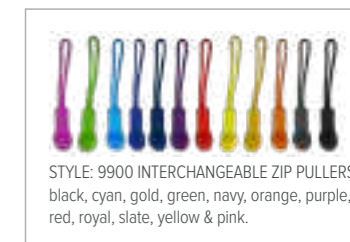
LADIES	8	10	12	14	16	18	20	22	24*	26*
1/2 CHEST	48	50.5	53	55.5	58	60.5	63	65.5	68	70.5

variations +/- 1 cm (guide only)

KIDS	6	8	10	12	14	16
1/2 CHEST	40	43	46	49	52	55

variations +/- 1 cm (guide only)

* MENS 6XL-8XL & LADIES 24 & 26 AVAILABLE ONLY IN BLACK & NAVY



STYLE: 9900 INTERCHANGEABLE ZIP PULLERS
black, cyan, gold, green, navy, orange, purple, red, royal, slate, yellow & pink.



OLYMPUS SOFTSHELL VEST

1515 MENS Size: S-3XL+5XL-8XL **2515 LADIES** Size: 8-26

Fabric:
320gm 3-layer performance softshell
Outer 95% polyester 5% elastane
Inner 100% polyester bonded fleece
WP 3000 | BP 3000*

Features:
Medium water repellent and wind resistant finish
2 side zip pockets and 1 chest zip pocket
Shaped back tail for added warmth and modesty
Tone on tone changeable zip pullers.

* WP 3000 | BP 3000 refer to page 90.

MENS	S	M	L	XL	2XL	3XL	5XL	6XL*	7XL*	8XL*
1/2 CHEST	54	56.5	59	61.5	64	66.5	71.5	75	78.5	82
variations +/- 1 cm (guide only)										
LADIES	8	10	12	14	16	18	20	22	24*	26*
1/2 CHEST	48	50.5	53	55.5	58	60.5	63	65.5	68	70.5
variations +/- 1 cm (guide only)										

* MENS 6XL-8XL & LADIES 24 & 26 AVAILABLE ONLY IN BLACK & NAVY



black/grey

navy/grey

red/grey

SHEFFIELD JACKET

1516 MENS Size: S-3XL+5XL **2516 LADIES** Size: 8-22

Fabric:
 Outer 100% polyester twill with TPU* membrane
 Inner 220gm 100% polyester brushed fleece
 WP 5000 | BP 5000**

Features:
 Seam sealed
 Water sealed chest zip pocket
 2 side zip pockets
 Detachable hood with peak
 Curved back hem
 Extra body length with twin head main zipper
 Adjustable elasticated cuff
 Internal zipper access for decoration

* Waterproof breathable membrane
 ** WP 5000 | BP 5000 refer to page 90.

MENS	S	M	L	XL	2XL	3XL	5XL
1/2 CHEST	57.5	60	62.5	65	67.5	70	75

variations +/- 1 cm (guide only)

LADIES	8	10	12	14	16	18	20	22
1/2 CHEST	53	55.5	58	60.5	63	65.5	68	70.5

variations +/- 1 cm (guide only)

KINGSTON JACKET



black/grey

grey/black

blue/black

KINGSTON JACKET

1517 MENS Size: S-3XL+5XL **2517 LADIES** Size: 8-22

Fabric:

Outer 150gm 100% polyester twill with membrane
 Inner 100% taffeta lining with polyester padding
 WP 5000 | BP 5000*

Features:

- Heavy padded
- 2 side and 2 inside chest pockets
- Detachable hood with peak
- Extra body length with twin head main zipper
- Adjustable elasticated cuff
- Internal zipper access for decoration

* WP 5000 | BP 5000 refer to page 90.

MENS	S	M	L	XL	2XL	3XL	5XL
1/2 CHEST	62.5	65	67.5	70	72.5	75	80

variations +/- 1 cm (guide only)

LADIES	8	10	12	14	16	18	20	22
1/2 CHEST	55	57	59.5	62	64.5	67	69.5	72

variations +/- 1 cm (guide only)



black/grey

black/blue

black/red

NAPIER JACKET

1518 MENS Size: S-3XL+5XL **2518 LADIES** Size: 8-22

Fabric:
Outer 175gm 100% polyester microfibre ripstop
Inner Taffeta light weight padded lining
WP 5000 | BP 5000*

Features:
6 pockets - 1 zip chest, 2 zip side, 2 internal zip
and 1 concealed zip sleeve pocket
Detachable hood with small peak
Extra body length with twin head main zipper
Adjustable elasticated cuff
Internal zipper access for decoration.

* WP 5000 | BP 5000 refer to page 90.

MENS	S	M	L	XL	2XL	3XL	5XL
1/2 CHEST	60	62.5	65	67.5	70	72.5	77.5

variations +/- 1 cm (guide only)

LADIES	8	10	12	14	16	18	20	22
1/2 CHEST	54	56	58	60.5	63	65.5	68	70.5

variations +/- 1 cm (guide only)



black

navy

PARKLANDS JACKET

1519 MENS Size: S-3XL+5XL **2519 LADIES** Size: 8-22

Fabric:
Outer 135gm 100% polyester satin finish
Inner 100% taffeta lining with polyester padding
WP 5000 | BP 5000*

Features:
2 side pockets with an internal pocket
Lightly padded detachable hood with peak
Extra body length with twin head main zipper
Contrast printed tweed storm flap
Adjustable cuff
Internal zipper access for decoration.

* WP 5000 | BP 5000 refer to page 90.

MENS	S	M	L	XL	2XL	3XL	5XL
1/2 CHEST	56	58.5	61	63.5	66	68.5	73.5

variations +/- 1 cm (guide only)

LADIES	8	10	12	14	16	18	20	22
1/2 CHEST	50.5	53	55.5	58	60.5	63	65.5	68

variations +/- 1 cm (guide only)



black

navy

BULLER PUFFER JACKET

1522 MENS Size: S-3XL+5XL **2522 LADIES** Size: 8-22

Fabric:
Outer 380T 100% nylon
Inner 100% polyester light weight padding

Features:
2 zip pockets
Elasticated cuffs
Stand up collar
Self fabric chin guard
Tone on tone changeable zip pullers
Internal zipper access for decoration.

MENS	S	M	L	XL	2XL	3XL	5XL
1/2 CHEST	58.5	61	63.5	66	68.5	72	77

variations +/- 1 cm (guide only)

LADIES	8	10	12	14	16	18	20	22
1/2 CHEST	48	50.5	53	55.5	58	60.5	63	65.5

variations +/- 1 cm (guide only)



STYLE: 9900 INTERCHANGEABLE ZIP PULLERS
black, cyan, gold, green, navy, orange, purple, red, royal, slate, yellow & pink.



black

navy

SNOWY PUFFER VEST

1523 MENS Size: S-3XL+5XL **2523 LADIES** Size: 8-22

Fabric:
Outer 380T 100% nylon
Inner 100% polyester light weight padding

Features:
2 zip pockets
Elasticated cuff
Stand up collar
Self fabric chin guard
Tone on tone changeable zip pullers
Internal zipper access for decoration

MENS	S	M	L	XL	2XL	3XL	5XL
1/2 CHEST	58.5	61	63.5	66	68.5	72	77

variations +/- 1 cm (guide only)

LADIES	8	10	12	14	16	18	20	22
1/2 CHEST	48	50.5	53	55.5	58	60.5	63	65.5

variations +/- 1 cm (guide only)



STYLE: 9900 INTERCHANGEABLE ZIP PULLERS
black, cyan, gold, green, navy, orange, purple, red, royal, slate, yellow & pink.



BUFFALO JACKET

1524 MENS Size: S-3XL+5XL **3524 KIDS** Size: 6-16

Fabric:
Outer 110gm 100% polyester doobby pongee
WP 3000 | BP 3000*

Features:
Water repellent and wind resistant finish
Reflective tape
2 external zip pockets
Elasticated cuff
Stand up collar with concealable hood
Chin guard

* WP 3000 | BP 3000 refer to page 90.

MENS	S	M	L	XL	2XL	3XL	5XL
1/2 CHEST	61.5	64	66.5	69	71.5	74	79

variations +/- 1 cm (guide only)

KIDS	6	8	10	12	14	16
1/2 CHEST	44	46	48	50	53	56

variations +/- 1 cm (guide only)



2902L GRANGE



1902L GRANGE



BUSINESS





KINGSWOOD MENS

1910S SHORT SLEEVE 1910L LONG SLEEVE

SIZES: XXS - 5XL+7XL

Fashionable and comfortable with a stylish cut, your every day go-to shirt.
65% polyester / 35% cotton with anti pill treatment.



Black



White

SIZE	XXS	XS	S	M	L	XL	XXL	3XL	4XL	5XL	7XL
NECK	37	39	40	42	43	45	46	48	50	52	57
CHEST	50.5	53	55.5	58	60.5	63	65.5	69.5	73.5	77.5	85.5

variations +/- 1 cm (guide only)





KINGSWOOD LADIES

2910S SHORT SLEEVE 2910L LONG SLEEVE 2910T 3/4 SLEEVE

SIZES: 4-26

With a stylish feminine cut, these lightweight shirts are easy care and quick dry with almost zero maintenance.
65% polyester / 35% cotton with anti pill treatment.



Black



White

SIZE	4	6	8	10	12	14	16	18	20	22	24	26
CHEST	43	45.5	48	50.5	53	55.5	58	62	65	67.5	70	74

variations +/- 1 cm (guide only)

AP Business



BRIGHTON MENS

1909S SHORT SLEEVE 1909L LONG SLEEVE

SIZES: XXS - 5XL

Our classic cut cotton rich shirt has a fashionable check design. Featuring a smaller subtle hounds tooth check inside the collar, placket and under the cuff as well as a practical left chest pocket. 60% cotton/40% polyester easy care fabric

SIZE	XXS	XS	S	M	L	XL	2XL	3XL	4XL	5XL
NECK	37	39	40	42	43	45	46	48	50	52
CHEST	50.5	53	55.5	58	60.5	63	65.5	69.5	73.5	77.5

variations +/- 1 cm (guide only)



French Blue



Claret Red



Black

AP Business



BRIGHTON LADIES

2909S SHORT SLEEVE 2909L LONG SLEEVE 2909T 3/4 SLEEVE

SIZES: 4-26

This cotton rich fabric has a small subtle hounds tooth check inside the collar. On the long sleeve, we have included the same small check on the under cuff and both the 3/4 sleeve and the short sleeve feature a trendy inverted V on the sleeve for wearing as is or folding up. 60% cotton/40% polyester easy care fabric. Along with all of the ladies shirts in the AP Business range, there is a 'Magic Button' on the inside placket to prevent the shirts from gaping at the bust.

SIZE	4	6	8	10	12	14	16	18	20	22	24	26
CHEST	43	45.5	48	50.5	53	55.5	58	62	65	67.5	70	74

variations +/- 1 cm (guide only)



French Blue



Claret Red



Black





DEVONPORT MENS

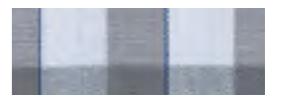
1908S SHORT SLEEVE 1908L LONG SLEEVE

SIZES: XXS - 5XL

A classic cut shirt with double turned top stitch front placket. The sleeve cuff has a tonal contrast under cuff with a matching inner neckband stand detail. 60% polyester/40% cotton with anti pill treatment.



Mid Blue/Sky



Charcoal/Silver

SIZE	XXS	XS	S	M	L	XL	2XL	3XL	4XL	5XL
NECK	37	39	40	42	43	45	46	48	50	52
CHEST	50.5	53	55.5	58	60.5	63	65.5	69.5	73.5	77.5

variations +/- 1 cm (guide only)





DEVONPORT LADIES

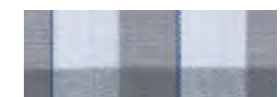
2908S SHORT SLEEVE 2908L LONG SLEEVE 2908T 3/4 SLEEVE

SIZES: 4-26

Edge stitched double turned placket. Contrast edging on short sleeve and inner collar stand finishes a classic style. A slim line fit with bust and waist darting front and back. 60% polyester/40% cotton with anti pill treatment. As with all of the ladies shirts in this range, there is a 'Magic Button' on the inside placket to prevent the shirt from gaping at the bust.



Mid Blue/Sky



Charcoal/Silver

SIZE	4	6	8	10	12	14	16	18	20	22	24	26
CHEST	43	45.5	48	50.5	53	55.5	58	62	65	67.5	70	74

variations +/- 1 cm (guide only)





EPSOM MENS

1907S SHORT SLEEVE 1907L LONG SLEEVE

SIZES: XXS - 5XL

Edge stitched placket with tonal tape trim on under button placket and long sleeve cuff. A fine tonal inside collar neck trim which finishes the presentation, pocket with V detailed stitching.
65% polyester/35% cotton with anti pill treatment.



Slate



Emerald



Mauve

SIZE	XXS	XS	S	M	L	XL	2XL	3XL	4XL	5XL
NECK	37	39	40	42	43	45	46	48	50	52
CHEST	50.5	53	55.5	58	60.5	63	65.5	69.5	73.5	77.5

variations +/- 1 cm (guide only)

AP Business



EPSOM LADIES

2907S SHORT SLEEVE 2907L LONG SLEEVE 2907T 3/4 SLEEVE

SIZES: 4-26

Edge stitched placket with tonal tape trim on under button placket and long sleeve cuff. A fine tonal inside collar neck trim which finishes the presentation. A classic fit with bust and waist darting front and back. The short and three quarter sleeve have top stitched cuffs with tonal piping inserts. 65% polyester/35% cotton with anti pill treatment. As with all of the ladies shirts in this range, there is a 'Magic Button' on the inside placket to prevent the shirt from gaping at the bust.

SIZE	4	6	8	10	12	14	16	18	20	22	24	26
CHEST	43	45.5	48	50.5	53	55.5	58	62	65	67.5	70	74

variations +/- 1 cm (guide only)



Slate



Emerald



Mauve





HENLEY MENS

1900S SHORT SLEEVE 1900L LONG SLEEVE

SIZES: XXS - 5XL

A superbly crafted striped shirt featuring a top stitched pleated front placket and collar. The cuffs are cut on an opposing direction for contrast with an angled finish. 65% polyester/35% cotton with anti-pill treatment.

SIZE	XXS	XS	S	M	L	XL	2XL	3XL	4XL	5XL
NECK	37	39	40	42	43	45	46	48	50	52
CHEST	50.5	53	55.5	58	60.5	63	65.5	69.5	73.5	77.5

variations +/- 1 cm (guide only)



Black/Silver



White/Navy



White/Purple





HENLEY LADIES

2900S SHORT SLEEVE 2900T 3/4 SLEEVE

SIZES: 4-26

Edge stitching finishes a double turn placket and collar. Sleeve cuffs are cut on an opposing direction to give a complementary contrast. Bust and waist darts create a slimline fit. Available in short and 3/4 sleeve lengths. 65% polyester/35% cotton with anti-pill treatment. As with all of the ladies shirts in this range, there is a 'Magic Button' on the inside placket to prevent the shirt from gaping at the bust.

SIZE	4	6	8	10	12	14	16	18	20	22	24	26
CHEST	43	45.5	48	50.5	53	55.5	58	62	65	67.5	70	74

variations +/- 1 cm (guide only)



Black/Silver



White/Navy



White/Purple



TOORAK MENS

1901S SHORT SLEEVE 1901L LONG SLEEVE

SIZES: XXS - 5XL

This mini-check shirt has top stitch pleated placket cut on the bias for added effect. A standard fit shirt with back yoke, side comfort pleats and pocket. 65% polyester/35% cotton with anti-pilling treatment.

SIZE	XXS	XS	S	M	L	XL	2XL	3XL	4XL	5XL
NECK	37	39	40	42	43	45	46	48	50	52
CHEST	50.5	53	55.5	58	60.5	63	65.5	69.5	73.5	77.5

variations +/- 1 cm (guide only)



Black/White



Purple/White



Navy/White





TOORAK LADIES

2901S SHORT SLEEVE 2901T 3/4 SLEEVE

SIZES: 4-26

This smart mini check has a bias cut button placket with a hidden 'Magic Button' and top stitching on the placket and cuff. The Toorak lady comes in both ¾ and short sleeves.

65% polyester/35% cotton with anti pill treatment.

SIZE	4	6	8	10	12	14	16	18	20	22	24	26
CHEST	43	45.5	48	50.5	53	55.5	58	62	65	67.5	70	74

variations +/- 1 cm (guide only)



Black/White



Purple/White



Navy/White



GRANGE MENS

1902S SHORT SLEEVE 1902L LONG SLEEVE

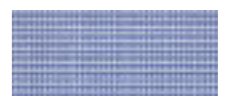
SIZES: XXS - 5XL

Available in three "micro-check" colours and two sleeve lengths, this shirt features a doubled turned placket with an angle edge on the long sleeve cuffs and back yoke with side comfort pleats.

65% polyester/35% cotton with anti-pilling treatment.

SIZE	XXS	XS	S	M	L	XL	2XL	3XL	4XL	5XL
NECK	37	39	40	42	43	45	46	48	50	52
CHEST	50.5	53	55.5	58	60.5	63	65.5	69.5	73.5	77.5

variations +/- 1 cm (guide only)



Mid Blue



Shadow Grey



Mauve



GRANGE LADIES

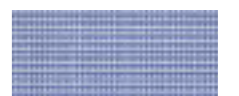
2902S SHORT SLEEVE 2902T 3/4 SLEEVE

SIZES: 4-26

The "Chesterfield" placket with 'Magic Button' has a bias piping insert as well as sleeve cuff seams. The short sleeve models a small buttoned finish whilst the 3/4 has a V opened cuff. A feminine fit is created with bust and waist darts. 65% polyester/35% cotton with anti pill treatment.

SIZE	4	6	8	10	12	14	16	18	20	22	24	26
CHEST	43	45.5	48	50.5	53	55.5	58	62	65	67.5	70	74

variations +/- 1 cm (guide only)



Mid Blue



Shadow Grey



Mauve





MOSMAN MENS

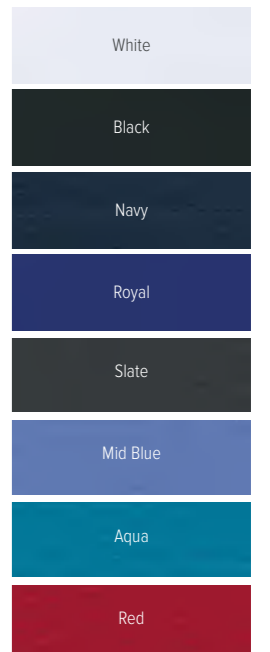
1903S SHORT SLEEVE 1903L LONG SLEEVE

SIZES: XXS - 5XL

The Mosman comes in eight fashionable colours with elastane for added comfort. The placket is double turned and edge stitched. The sleeves are made modern with a curved cuff. The mens standard fit shirt has a back yoke with side comfort pleats and a rounded pocket. 70% polyester/27% cotton/3% elastane with anti-pilling treatment.

SIZE	XXS	XS	S	M	L	XL	2XL	3XL	4XL	5XL
NECK	37	39	40	42	43	45	46	48	50	52
CHEST	50.5	53	55.5	58	60.5	63	65.5	69.5	73.5	77.5

variations +/- 1 cm (guide only)





MOSMAN LADIES

2903S SHORT SLEEVE 2903L LONG SLEEVE 2903T 3/4 SLEEVE

SIZES: 4-26

The Mosman comes in eight fashionable colours with elastane for added comfort. The placket is double turned and edge stitched. The sleeves have a modern twist with a curved cuff. The ladies shirt hides a 'Magic Button'. 70% polyester/27% cotton/ 3% elastane with anti-pilling treatment.

SIZE	4	6	8	10	12	14	16	18	20	22	24	26
CHEST	43	45.5	48	50.5	53	55.5	58	62	65	67.5	70	74

variations +/- 1 cm (guide only)

White	Slate
Black	Mid Blue
Navy	Aqua
Royal	Red



BELAIR MENS

1905S SHORT SLEEVE 1905L LONG SLEEVE

SIZES: XXS - 5XL

This contemporary styled mens shirt has been created using anti-pilling 65% polyester/35% cotton. Featuring a double turned clean edge placket, a top stitched collar and cuffs and an angled edge corner on the cuff and the pocket.

SIZE	XXS	XS	S	M	L	XL	2XL	3XL	4XL	5XL
NECK	37	39	40	42	43	45	46	48	50	52
CHEST	50.5	53	55.5	58	60.5	63	65.5	69.5	73.5	77.5

variations +/- 1 cm (guide only)





BELAIR LADIES

2905S SHORT SLEEVE 2905T 3/4 SLEEVE

SIZES: 4-26

Below the doubled turned placket there is a hidden 'Magic Button' highlighting a Princess line front and back cut for a feminine flattering fit, complete with bias cut cuffs and edge stitched collar. 65% polyester/35% cotton with anti-pilling treatment.

SIZE	4	6	8	10	12	14	16	18	20	22	24	26
CHEST	43	45.5	48	50.5	53	55.5	58	62	65	67.5	70	74

variations +/- 1 cm (guide only)





BAYVIEW MENS

1906S SHORT SLEEVE 19060L LONG SLEEVE

SIZES: XXS - 5XL

Woven corded twill stripe fabric features an angled arrow head finish at the back of the collar. Two sleeve lengths are available, with a pleated bias cut placket contrasting cuff on the long sleeve.

65% polyester/35% cotton with an anti-pilling treatment.

SIZE	XXS	XS	S	M	L	XL	2XL	3XL	4XL	5XL
NECK	37	39	40	42	43	45	46	48	50	52
CHEST	50.5	53	55.5	58	60.5	63	65.5	69.5	73.5	77.5

variations +/- 1 cm (guide only)



White/Silver



White/Pink



White/Sky



BAYVIEW LADIES

2906S SHORT SLEEVE 2906T 3/4 SLEEVE

SIZES: 4-26

Featuring bust darts, slimming front and back waist darts, a 'Magic Button' to prevent gaping and bias cut cuff sleeves. The varied width bias cuff has a centre split and the collar offers a bias cut forming an angled arrow head finish. 65% polyester/35% cotton with anti-pilling treatment.

SIZE	4	6	8	10	12	14	16	18	20	22	24	26
CHEST	43	45.5	48	50.5	53	55.5	58	62	65	67.5	70	74

variations +/- 1 cm (guide only)



White/Silver



White/Pink



White/Sky



FLAT FRONT PANT



AP Business

PLEATED FRONT PANT



MENS PANTS

1800 FLAT FRONT 1801 PLEATED

The classic flat front cut mens pant features a flat front to make your silhouette appear more smooth and straight. In flat front pants, the material lies flat and should be worn on the hips but they do have to fit you perfectly.
65% polyester/35% viscose

Pleats are creases on the front of the pants where the material is folded and sewed before it is attached to the waistband. The pleated pants are worn on the waist, just above your hip bone, which means pleated pants have a higher rise making them more generous in the middle. They will give you more freedom of movement and you will feel more comfortable.
65% polyester/35% viscose



Black



Navy



Charcoal

WAIST CM	72R	77R	82R	87R	92R	97R	102R	107R	112R	117R	122R	127R
INSIDE LEG CM	81	81	81	82	82	83	83	83	84	84	84	84

FLAT FRONT PANT



AP Business

CLASSIC LADIES SKIRT



LADIES PANTS & SKIRT SIZES: 4-26

2800 CLASSIC PANT 2802 CLASSIC KNEE LENGTH SKIRT

Our tailored Classic Lady Pant has elastane for that extra comfort and features a flat front to make your silhouette appear more flattering, smoother and straighter. To maintain a smart and professional look, our mid-waist Pant has a front button closure and constructed waist with belt loops and two front square pockets.
65% polyester/33% viscose/2% elastane

Our stylish fully lined tailored knee length skirt is made of 65% polyester for durability, 33% viscose for feel and 2% elastane for stretch and comfort. The lining fabric also has elastane making it comfortable to wear. Two front square cut welt pockets have been added to this corporate essential. Both the pant and the skirt can be co-ordinated to enhance the wearers option. Features a 'Magic Button' at the back for comfort.
65% polyester/33% viscose/2% elastane



Black



Navy



Charcoal

SIZE	4	6	8	10	12	14	16	18	20	22	24	26
TO FIT WAIST CM	58.5	61	66	71	76	81	86	91	96	101	106	111
TO FIT HIP CM	86.5	89	94	99	104	109	114	119	124	129	134	139

HOW TO measure

STEP 1

choose your favourite fitting shirt and grab a tape measure or ruler.

TIP: don't use a polo, tee or singlet to measure with because they stretch more than a woven shirt does.

STEP 2

lay it down on a flat surface with the arms extended and smooth it flat.

TIP: make sure no-one is wearing it.

STEP 3

measure down 2.5cm

from where the arm is sewn onto the body, give yourself a 'mark'.

TIP: don't use a pen or marker, just make a light indentation in the fabric with your fingernail.

STEP 4

half chest measurement

Use this 'mark' you have just made and then measure across the front of the shirt from seam to seam.

TIP: only measure the front, that's why it's called a half chest measurement.

STEP 5

refer to sizing tables in this catalogue or Online www.aussiepacific.com.au to match your half chest measurement to the Sizing Table.

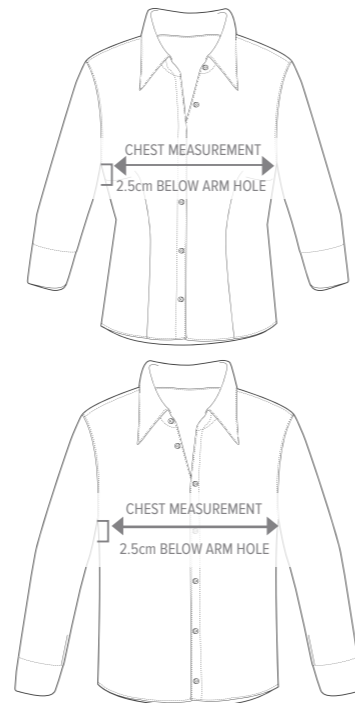
TIP: do the measure up more than once in case you misread the numbers.

STEP 6

compare and consider

If your half chest measurement is 59cm then go to the shirt style you are considering and determine where 59 sits on the size chart.

TIP: If you come in at 59cm, then consider going to an L at 60.5cm



VARIATIONS +/- 1cm - 1/2 CHEST MEASURE



CORPORATE RESPONSIBILITY 2021

AUSSIE PACIFIC TAKES AND CONSIDERS THE ISSUE OF SOCIAL RESPONSIBILITY VERY SERIOUSLY

Corporate Social Responsibility (CSR) is a form of corporate self regulation integrated into a business model. CSR is also known as corporate conscience, social performance or sustainable responsible business.

Aussie Pacific offers innovative products and services while conserving, protecting and enhancing resources. To do this, Aussie Pacific's CSR Policy functions as a built in self regulating mechanism to monitor and ensure an active compliance within the spirit of the law and also ethical standards.

The goal of the Aussie Pacific CSR is to embrace and enhance responsibility for the

company's actions and to encourage a positive impact through our activities on the environment, our consumers, our employee communities, our stakeholders and our valued clients.

CSR is a non-binding principle that has received status in relation to both private and corporate sectors particularly in relation to workers conditions and the use of under age or child labour.

Our objective is to provide a set of requirements that when effectively implemented provides full confidence that we consistently provide goods and services that meet your

ethical needs and quality expectations and comply with all necessary regulations both in China and Australia.

The factory falls under the ISO (ISO:9001) umbrella which is an international standard that gives requirement for an organisation's quality management system.

Aussie Pacific does this in well managed factories. There is no forced, under age or child labour used in the manufacture of these retail quality garments. Workers rights and entitlements are also at the fore front as you would expect because Aussie Pacific is an Australian owned and operated company.



AP Business MAGIC button

When modesty is important, we've got you covered.

No more gaping plackets with our new Magic Button.
This button is cleverly hidden in the placket to make sure your modesty is your business.





AP DYE SUBLIMATION

Dye Sublimation is a process for printing designed themes by injecting colour and imagination into fabric. Chances are you have already got, or seen, sublimated fabrics. Industries such as sports, events and fashion rely heavily on this particular style.

Not creative? That's okay! It's easy to approach trained professionals who will use their expertise to get your unique design out of your head and into fabric. Alternatively, jump online and try design your own dye sublimated apparel at www.aussiepacific.com.au, then take your design to a professional and we will custom make your garment for a minimum of only 10 pieces. Sounds pretty easy, right?

With Dye Sublimation (referred to as Dye Sub) the graphics are computer generated and transferred by printing to dye sublimated paper using specialised inks which are then transferred through heat and pressure into the fabric to give you a unique piece of clothing with the image or pattern embedded forever.

The image can be all over from seam to seam, will not fade, crack or fall off. These garments are made in our China factory using the latest technology dye sub printers and heat presses.

Dye Sub can only be done successfully on 100% Polyester fabrics which especially suits the Aussie Pacific fabrics.

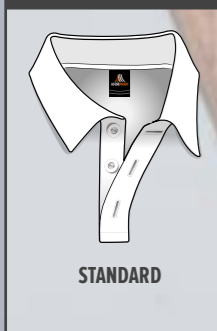


DYE SUB





COLLAR OPTION



SWOOSH MENS POLO
COLLAR: STANDARD
STYLE: SET IN



WINNERS MENS POLO
COLLAR: STANDARD
STYLE: SET IN



AUSSIE MENS POLO
COLLAR: STANDARD
STYLE: SET IN



SWOOSH LONG SLEEVE - STYLE: 2307LONGSLEEVE*

* PLEASE ADD "LONGSLEEVE" TO ANY CODE THAT REQUIRES A LONG SLEEVE STYLE.

MENS POLO
SET IN AND RAGLAN

MENS	XS	S	M	L	XL	XXL	3XL	5XL
I/2 CHEST CM	50.5	53	55.5	58	60.5	63	68	73
SHLDR TO HEM*	67	69	71	73	75	77	79	81

*HIGH POINT SHOULDER TO HEM - variations +/- 1 cm (guide only)

KIDS POLO
SET IN AND RAGLAN

KIDS	4	6	8	10	12	14	16
I/2 CHEST CM	36	38	40	42	44	46	49
SHLDR TO HEM*	49	52	55	58	61	64	67

*HIGH POINT SHOULDER TO HEM - variations +/- 1 cm (guide only)

LADIES POLO
SET IN AND RAGLAN

LADIES	6	8	10	12	14	16	18	20	22	24	26
I/2 CHEST	42.5	45	47.5	50	52.5	55	57.5	60	64.5	69.5	74.5
BODY LENGTH	59	61	63	65	67	69	71	72	73	74	75

variations +/- 1 cm (guide only)



MICRO MESH



INTER LOCK



MINI WAFFLE



BIRDS EYE



COTTON BACK

T-SHIRT

STANDARD



COLLAR OPTION



CLASSIC VEE



ROUND

MENS TEE SET IN AND RAGLAN

MENS	XS	S	M	L	XL	XXL	3XL	5XL
I/2 CHEST CM	50.5	53	55.5	58	60.5	63	68	73
SHLDR TO HEM*	67	69	71	73	75	77	79	81

*HIGH POINT SHOULDER TO HEM - variations +/- 1 cm (guide only)

KIDS TEE SET IN AND RAGLAN

KIDS	4	6	8	10	12	14	16
I/2 CHEST CM	36	38	40	42	44	46	49
SHLDR TO HEM*	49	52	55	58	61	64	67

*HIGH POINT SHOULDER TO HEM - variations +/- 1 cm (guide only)



SWIRLS TEE
COLLAR: ROUND
STYLE: RAGLAN



ARROW TEE
COLLAR: ROUND
STYLE: RAGLAN



PACIFIC TEE
COLLAR: ROUND
STYLE: SET IN



SWIRL TEE VEE NECK - STYLE: 2204LADIES



MOTO GRID LONG SLEEVE - STYLE: 2207LONGSLEEVE*

* PLEASE ADD "LONGSLEEVE" TO ANY CODE THAT REQUIRES A LONG SLEEVE STYLE.

LADIES TEE SET IN AND RAGLAN

LADIES	6	8	10	12	14	16	18	20	22	24	26
I/2 CHEST	42.5	45	47.5	50	52.5	55	57.5	60	64.5	69.5	74.5
BODY LENGTH	59	61	63	65	67	69	71	72	73	74	74

variations +/- 1 cm (guide only)



MICRO MESH



INTER LOCK



MINI WAFFLE



BIRDS EYE



COTTON BACK

SINGLET

DESIGNS



NECK OPTION



CLASSIC VEE



ROUND

MENS SINGLET STANDARD

MENS	XS	S	M	L	XL	XXL	3XL	5XL
I/2 CHEST	48.5	51	53.5	56	58.5	61	63.5	68.5
SHLDR TO HEM*	65	67	69	71	73	75	77	79

*HIGH POINT SHOULDER TO HEM - variations +/- 1 cm (guide only)

LADIES SINGLET STANDARD

LADIES	6	8	10	12	14	16	18	20	22
I/2 CHEST	41	43.5	46	48.5	51	53.5	56.5	59.5	62
SHLDR TO HEM*	57.5	59.5	61.5	63.5	65.5	67.5	69.5	71.5	73.5

variations +/- 1 cm (guide only)

MENS SINGLET RACERBACK

MENS	XS	S	M	L	XL	XXL	3XL	5XL
I/2 CHEST	47	49.5	52	54.5	57	59.5	62	67
SHLDR TO HEM*	72	74	76	78	80	82	84	86

*HIGH POINT SHOULDER TO HEM - variations +/- 1 cm (guide only)

LADIES SINGLET RACERBACK

LADIES	6	8	10	12	14	16	18	20	22
I/2 CHEST	38.5	41	43.5	46	48.5	51	53.5	56.5	59.5
SHLDR TO HEM* (FRONT)	55.5	57.5	59.5	61.5	63.5	65.5	67.5	69.5	71.5

variations +/- 1 cm (guide only)



AURORA MENS SINGLET
NECK: ROUND
STYLE: RACERBACK



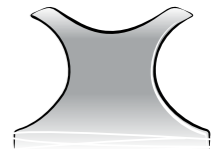
LADIES CLASSIC VEE RACERBACK SINGLET



SWIMMER LADIES SINGLET
NECK: CLASSIC VEE
STYLE: RACERBACK



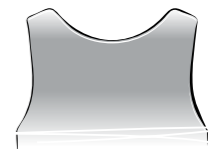
BACK OPTION



MENS RACERBACK



LADIES RACERBACK



STANDARD BACK



OLD SCHOOL SINGLET
NECK: ROUND
STYLE: STANDARD BACK



KIDS SINGLET STANDARD

KIDS	4	6	8	10	12	14	16
I/2 CHEST	35	37	39	41	43	45	48
SHLDR TO HEM*	49	52	55	58	61	64	67

*HIGH POINT SHOULDER TO HEM - variations +/- 1 cm (guide only)



MICRO MESH



INTER LOCK



MINI WAFFLE



BIRDS EYE



POLY ELASTANE



COLLAR OPTION



PREMIUM



NZ



RANDWICK



CHRISTCHURCH JERSEY
COLLAR: NZ
STYLE: SET IN



HOOP SHORTS
STYLE: RUGBY SHORTS



TITAN JERSEY
COLLAR: PREMIUM
STYLE: RAGLAN



TITAN SHORTS
STYLE: RUGBY SHORTS



SPRINT JERSEY
COLLAR: RANDWICK
STYLE: RAGLAN



TRIO SHORTS
STYLE: RUGBY SHORTS

MENS FITTED JERSEY SET IN AND RAGLAN

MENS	XS	S	M	L	XL	XXL	3XL	4XL	5XL
I/2 CHEST CM	48.5	51	53.5	56	58.5	61	66	68.5	71
HEM CM	39	41.5	44	46.5	49	51.5	56.5	59	61.5
SHLDR TO HEM*	67	69	71	73	75	77	79	80	81

*HIGH POINT SHOULDER TO HEM - variations +/- 1 cm (guide only)

MENS RUGBY SHORT

MENS	XS	S	M	L	XL	XXL	3XL
I/2 RELAXED WAIST	30	32	34	36	38	40	42
OUTSIDE LENGTH	32	33	34	35	36	37	38

variations +/- 1 cm (guide only)



INTERLOCK



COLLAR OPTION



PREMIUM



NZ



RANDWICK

MENS CLASSIC JERSEY SET IN AND RAGLAN

MENS	XS	S	M	L	XL	XXL	3XL
I/2 CHEST	50.5	53	55.5	58	60.5	63	68
HEM CM	50.5	53	55.5	58	60.5	63	68
SHLDR TO HEM*	67	69	71	73	75	77	79

*HIGH POINT SHOULDER TO HEM - variations +/- 1 cm (guide only)

KIDS CLASSIC JERSEY SET IN AND RAGLAN

KIDS	4	6	8	10	12	14	16
I/2 CHEST	36	38	40	42	44	46	49
HEM CM	36	38	40	42	44	46	49
SHLDR TO HEM*	49	52	55	58	61	64	67

*HIGH POINT SHOULDER TO HEM - variations +/- 1 cm (guide only)



COWBOY JERSEY
COLLAR : RANDWICK
STYLE : RAGLAN



COWBOY SHORTS
STYLE : RUGBY SHORTS



POINTER JERSEY
COLLAR : NZ
STYLE : SET IN



TITAN SHORTS
STYLE : RUGBY SHORTS



SAINT JERSEY
COLLAR : PREMIUM
STYLE : RAGLAN CLASSIC



SOLID SHORTS
STYLE : RUGBY SHORTS

MENS RUGBY SHORTS

MENS	XS	S	M	L	XL	XXL	3XL
I/2 RELAXED WAIST	30	32	34	36	38	40	42
OUTSIDE LENGTH	32	33	34	35	36	37	38

variations +/- 1 cm (guide only)

KIDS RUGBY SHORTS

KIDS	6	8	10	12	14	16
I/2 RELAXED WAIST	22	24	26	28	30	32
OUTSIDE LENGTH	25	26	27	28	29	31

variations +/- 1 cm (guide only)

AUSSIE RULES

SLEEVELESS
GUERNSEY & SHORTS



DOUBLE VEE SLEEVELESS GUERNSEY



COLLAR OPTION



2 PIECE VEE



CLASSIC VEE



ROUND



DOUBLE VEE GUERNSEY
COLLAR: 2 PIECE VEE
STYLE: SLEEVELESS



TRIO SHORTS
STYLE: AUSSIE RULES SHORTS



BRIZO GUERNSEY
COLLAR: CLASSIC VEE
STYLE: SLEEVELESS



SIDE STRIPE SHORTS
STYLE: AUSSIE RULES SHORTS



PACIFIC GUERNSEY
COLLAR: ROUND
STYLE: SLEEVELESS



SOLID SHORTS
STYLE: AUSSIE RULES SHORTS

MENS SLEEVELESS

MENS	XS	S	M	L	XL	XXL	3XL
I/2 CHEST CM	45	47.5	50	52.5	55	57.5	60
SHLDR TO HEM*	65	67	69	71	73	75	77

*HIGH POINT SHOULDER TO HEM - variations +/- 1 cm (guide only)

LADIES SLEEVELESS

LADIES	6	8	10	12	14	16	18	20
I/2 CHEST CM	37	39.5	42	44.5	47	49.5	52	55
SHLDR TO HEM*	60.5	62.5	64.5	66.5	68.5	70.5	72.5	74.5

*HIGH POINT SHOULDER TO HEM FRONT - variations +/- 1 cm (guide only)

KIDS SLEEVELESS

KIDS	4	6	8	10	12	14	16
I/2 CHEST CM	35	37	39	41	43	45	48
SHLDR TO HEM*	49	52	55	58	61	64	67

*HIGH POINT SHOULDER TO HEM - variations +/- 1 cm (guide only)

MENS AUSSIE RULES SHORTS

MENS	XS	S	M	L	XL	XXL	3XL
I/2 RELAXED WAIST	30	32	34	36	38	40	42
OUTSIDE LENGTH	32	33	34	35	36	37	38

variations +/- 1 cm (guide only)

LADIES AUSSIE RULES SHORTS

LADIES	6	8	10	12	14	16	18	20
I/2 RELAXED WAIST	31	33.5	36	38.5	41	43.5	46	48.5
OUTSIDE LENGTH	26	27	28	29	30	31	32	33

variations +/- 1 cm (guide only)

KIDS AUSSIE RULES SHORTS

KIDS	6	8	10	12	14	16
I/2 RELAXED WAIST	22	24	26	28	30	32
OUTSIDE LENGTH	25	26	27	28	29	31

variations +/- 1 cm (guide only)

BASKETBALL

SINGLET & SHORTS



PIN STRIPE SINGLET & SHORTS



COLLAR OPTION



PIN STRIPE SINGLET
COLLAR: SQUARE VEE
STYLE: BASKETBALL SINGLET



PIN STRIPE SHORTS
STYLE: BASKETBALL SHORTS



CELTIC SINGLET
COLLAR: SQUARE VEE
STYLE: BASKETBALL SINGLET



CELTIC SHORTS
STYLE: BASKETBALL SHORTS



ALL STAR SINGLET
COLLAR: SQUARE VEE
STYLE: BASKETBALL SINGLET



ALL STAR SHORTS
STYLE: BASKETBALL SHORTS

MENS SINGLET

MENS	XS	S	M	L	XL	XXL	3XL
I/2 CHEST CM	48.5	51	53.5	56	58.5	61	63.5
SHLDR TO HEM*	73	75	77	79	81	83	85

*HIGH POINT SHOULDER TO HEM - variations +/- 1 cm (guide only)

LADIES SINGLET

LADIES	6	8	10	12	14	16	18	20
I/2 CHEST CM	41	43.5	46	48.5	51	53.5	56.5	59.5
SHLDR TO HEM*	65	67	69	71	73	75	77	79

*HIGH POINT SHOULDER TO HEM FRONT - variations +/- 1 cm (guide only)

KIDS SINGLET

KIDS	6	8	10	12	14	16
I/2 CHEST CM	37	39	41	43	45	48
SHLDR TO HEM*	52	55	58	61	64	67

*HIGH POINT SHOULDER TO HEM - variations +/- 1 cm (guide only)

MENS SHORTS

MENS	XS	S	M	L	XL	XXL	3XL
I/2 RELAXED WAIST	31.5	34	36.5	39	41.5	44	46.5
OUTSIDE LENGTH	52	53	54	55	56	57	58

variations +/- 1 cm (guide only)

LADIES SHORTS

LADIES	8	10	12	14	16	18	20
I/2 RELAXED WAIST	31.5	34	36.5	39	41.4	44	46.5
OUTSIDE LENGTH	47	48	49	50	51	52	53

variations +/- 1 cm (guide only)

KIDS SHORTS

KIDS	6	8	10	12	14	16
I/2 RELAXED WAIST	24.5	26.5	28.5	30.5	32.5	34.5
OUTSIDE LENGTH	35	37	39	41	43	45

variations +/- 1 cm (guide only)

SOCCER

JERSEY & SHORTS



COLLAR OPTION



2 PIECE ROUND



CLASSIC VEE



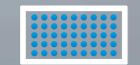
CLASSIC POLO



BURNLEY JERSEY



INTER LOCK



MICRO MESH



MINI WAFFLE



BURNLEY JERSEY
COLLAR: CLASSIC POLO
STYLE: RAGLAN



DOUBLE STRIPE SHORTS
STYLE: SOCCER SHORTS



DIAGONAL JERSEY
COLLAR: 2 PIECE ROUND
STYLE: RAGLAN



SOLID SHORTS
STYLE: SOCCER SHORTS



SWIFT JERSEY
COLLAR: CLASSIC VEE
STYLE: RAGLAN



SIDE STRIPE SHORTS
STYLE: SOCCER SHORTS

MENS JERSEY SET IN AND RAGLAN

MENS	XS	S	M	L	XL	XXL	3XL
I/2 CHEST	50.5	53	55.5	58	60.5	63	68
SHLDR TO HEM*	67	69	71	73	75	77	79

*HIGH POINT SHOULDER TO HEM - variations +/- 1 cm (guide only)

LADIES JERSEY SET IN AND RAGLAN

LADIES	6	8	10	12	14	16	18
I/2 CHEST CM	42.5	45	47.5	50	52.5	55	57.5
SHLDR TO HEM*	59	61	63	65	67	69	71

*HIGH POINT SHOULDER TO HEM FRONT - variations +/- 1 cm (guide only)

KIDS JERSEY SET IN AND RAGLAN

KIDS	4	6	8	10	12	14	16
I/2 CHEST	36	38	40	42	44	46	49
SHLDR TO HEM*	49	52	55	58	61	64	67

*HIGH POINT SHOULDER TO HEM - variations +/- 1 cm (guide only)

MENS SHORTS

MENS	XS	S	M	L	XL	XXL	3XL
I/2 RELAXED WAIST	32	34	36	38	40	42	44
OUTSIDE LENGTH	42	43	44	45	46	47	48

variations +/- 1 cm (guide only)

LADIES SHORTS

LADIES	6	8	10	12	14	16	18	20
I/2 RELAXED WAIST	28	30.5	33	35.5	38	40.5	43	45.5
OUTSIDE LENGTH	40.5	41.5	42.5	43.5	44.5	45.5	46.5	47.5

variations +/- 1 cm (guide only)

KIDS SHORTS

KIDS	6	8	10	12	14	16
I/2 RELAXED WAIST	24.5	26.5	28.5	30.5	32.5	34.5
OUTSIDE LENGTH	30	32	34	36	38	40

variations +/- 1 cm (guide only)

BASEBALL

TOP



NETBALL

DRESSES



YOKE DRESS



A-LINE DRESS



A-LINE DRESS + SIDE PANELS

DYE SUBLIMATION

MENS BASEBALL TOP

MENS	S	M	L	XL	XXL	3XL	5XL
I/2 CHEST	55	57.5	60	62.5	65	67.5	72.5
SHLDR TO HEM*	74	76	78	80	82	84	87

*HIGH POINT SHOULDER TO HEM - variations +/- 1 cm (guide only)

KIDS BASEBALL TOP

KIDS	4	6	8	10	12	14	16
I/2 CHEST	36	38	40	42	44	46	49
SHLDR TO HEM*	46.5	50.5	53.5	56.5	59.5	62.5	65.5

*HIGH POINT SHOULDER TO HEM - variations +/- 1 cm (guide only)



LADIES NETBALL DRESS

LADIES	6	8	10	12	14	16	18	20
I/2 CHEST	40	42.5	45	47.7	50	52.5	55	57.5
SHLDR TO HEM*	79	81	83	85	87	89	91	93

*HIGH POINT SHOULDER TO HEM - variations +/- 1 cm (guide only)

GIRLS NETBALL DRESS

KIDS	4	6	8	10	12	14	16
I/2 CHEST	30	32	34	36	38	40	43
SHLDR TO HEM*	67	69	74	76	78	80	82

*HIGH POINT SHOULDER TO HEM - variations +/- 1 cm (guide only)



MICRO MESH POLY ELASTANE

NETBALL

SINGLET & SKORT



SQUARES

GD	GA
GK	WA
C	WD
GS	 260 INTERLOCK

SQUARES

CODE
NETBALL SQUARES SETS NETBALLSQUARES
21cm x 23cm approx. - Size changeable by request.

NECK OPTION



CLASSIC VEE



ROUND

NETBALL

SINGLET & SKIRT



DYE SUBLIMATION

LADIES NETBALL SINGLET

LADIES	6	8	10	12	14	16	18	20
1/2 CHEST	39.5	42	44.5	47	49.5	52	54.5	57
SHLDR TO HEM FRONT*	79	81	83	85	87	89	91	93

*HIGH POINT SHOULDER TO HEM - variations +/- 1 cm (guide only)

GIRLS NETBALL SINGLET

KIDS	4	6	8	10	12	14	16
1/2 CHEST	30	32	34	36	38	40	42
SHLDR TO HEM FRONT*	51	53	55	57	59	61	63

*HIGH POINT SHOULDER TO HEM - variations +/- 1 cm (guide only)



INTER LOCK



MINI WAFFLE



MICRO MESH



POLY ELASTANE

LADIES NETBALL BOTTOMS SKIRT AND SKORT

LADIES	6	8	10	12	14	16	18	20	22
WAIST CM	28	30	32	34	36	38	40	42	44
OUTSIDE LEG	29.5	31.5	33.5	35.5	37.5	39.5	41.5	43.5	45.5

variations +/- 1 cm (guide only)

GIRLS NETBALL BOTTOMS SKIRT AND SKORT

KIDS	6	8	10	12	14	16
WAIST CM	24	26	28	30	32	34
OUTSIDE LEG	25.5	27.5	29.5	31.5	33.5	35.5

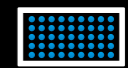
variations +/- 1 cm (guide only)



INTER LOCK



MINI WAFFLE



MICRO MESH



POLY ELASTANE



CHRISTCHURCH JERSEY



3 REAR POCKETS



PERFORMANCE FABRICS



MICROMESH

100% polyester 165gsm, micro mesh is the latest addition of AP sports fabrics. The tiny punctures in the fabric promote ventilation, keeping you cool and dry.



INTERLOCK 260

100% polyester 260gsm with a thick double knit flat surface fabric providing a high dimension of stability, strength and durability. Perfect for playing jerseys and shorts.



MINI WAFFLE

100% polyester 130/ 160gsm, the mini waffle fabric forms the backbone of the Aussie Pacific stock range as a proven fabric in the market for its durability and quick drying properties. It is ideal for schools, clubs and corporate use.



POLY/ELASTANE 240

88% polyester/12% elastane 240gsm with a two-way stretch functional fabric that forms to the body to give you a comfortable and firm fit. This mix is perfect for netball dresses and cycling jerseys.



INTERLOCK 150

100% polyester 150gsm makes this tight knit fabric extremely smooth, firm and very absorbent. A great printable surface that is ideal for tops and shorts.

MENS JERSEY SET IN AND RAGLAN

MENS	S	M	L	XL	XXL	3XL
1/2 CHEST CM	47	49	51	53	55	57
FRONT LENGTH	61	63	65	67	69	71
BACK LENGTH	65.5	67.5	69.5	71.5	73.5	75.5

HIGH POINT SHOULDER TO HEM - variations +/- 1 cm (guide only)

LADIES JERSEY SET IN AND RAGLAN

LADIES	6	8	10	12	14	16	18	20	22
1/2 CHEST CM	37	39	41	43	45	47	49	51	53
FRONT LENGTH	54	56	58	60	62	64	66	68	70
BACK LENGTH	58.5	60.5	62.5	64.5	66.5	68.5	70.5	72.5	74.5

HIGH POINT SHOULDER TO HEM FRONT - variations +/- 1 cm (guide only)



INTERLOCK



MINI WAFFLE



POLY ELASTANE



What you need to know before sending artwork.

1. Provide a high resolution file

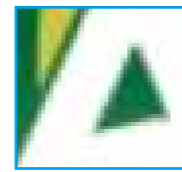
Vector File (line art) is the most common file as it is easy to manipulate and make variations if necessary. For images a Hi Resolution file with a minimum of 300DPI. Explanation for Vector and Raster Files are outlined below

2. Create all text to outlines

With numerous text font styles available and to ensure we print the correct style to suit your needs it is best to create text to outlines.

3. Choose your colourway

We use PMS (Pantone Matching System) colours as a guide only. For colour matching we strongly suggest purchasing a sample.



JPEG @ 200%



VECTOR @ 200%



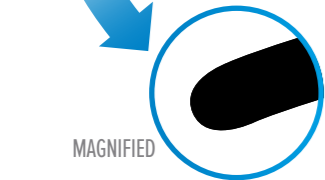
Proxima font (editable text)



Converted to outlines



DRAWING WITH VECTORS



MAGNIFIED

VECTOR

TYPICAL FILE FORMATS:

.AI, .CDR, .PDF*, .EPS*

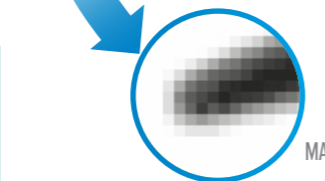
NOTE: .EPS AND .PDF FILES CAN BE BOTH VECTOR OR BITMAP DEPENDING ON WHERE AND HOW THE IMAGE WAS CREATED.

Vector = fonts/logos and graphics

The most common programs used to design vector graphics are Adobe Illustrator and Corel Draw. Most designers when designing your logos and graphics for printing will use a line vector program especially if fonts and shapes are involved. The great thing with vector files is they can be scaled to any size without losing sharpness.



PAINTING WITH PIXELS



MAGNIFIED

RASTER

TYPICAL FILE FORMATS:

.JPEG/.JPG, .TIFF, .PSD, .BMP, .PNG, .GIF

Raster (bitmap) = photographs

A Raster (or Bitmap) image is made up of tiny square dots (pixel) of colour when grouped together form a rastered image. Raster Images are the most common images found on your computer and on the web. The resolution (measurement of pixels) is kept as low as possible for viewing on a computer screen or device.

ONLY 2 FORMATS TO REMEMBER

FONT OPTIONS:



0123456789

FONT: IMPACT

0123456789

FONT: PRINCTON

0123456789

FONT: PREM LEAGUE

Aussie Pacific garment designers have taken into account the many different methods of decorating or monogramming apparel. Here we look at the three main methods of decoration yet there are others such as Digitally Printed transfers and Screen Printed transfers.

SCREEN-PRINTING

We thought it would be helpful to indicate what happens each time a job is printed.

The first step is artwork. Once the artwork is finalised, it gets sent for processing. You need to confirm the specific print locations you have instructed to print. After the art has been approved, then film is output to make the screens.

The first step in the screen department is to coat the screens with a photosensitive emulsion. Each colour in a design needs a screen and each screen must be blocked, taped, setup, and squeegeed.

Just imagine if we had to do this each time a t-shirt was ordered. You can see why screen printing was designed to print quality in bulk. For larger runs with more colours, an automatic machine with 10-18 heads is more practical. By "flashing" or drying the ink between each colour layer, a bright, professional quality print, with years of wear and tear is achievable.

MACHINE EMBROIDERY

A term that describes a specially designed, computerised, embroidery or sewing-embroidery machine to automatically create a design from a pre-made pattern that is input into the machine.

Design Files or 'Masters' are typically downloaded to a computer and then transferred to an embroidery machine which can then be used to stitch out the embroidery designs.

SUBLIMATION

The basic dye sublimation process uses special heat-sensitive dyes to print graphics and text onto special transfer paper. The paper is then placed on a 100% polyester item and both are placed into a heat press. When the heating cycle is completed, the image on the paper has been transferred to the item and has actually reformed into or underneath the coated surface. Sublimation is always done on a polyester, polymer, or polymer-coated item. At high temperatures, the solid dye converts into a gas without ever becoming a liquid. The same high temperature opens the pores of the polymer and allows the gas to enter. When the temperature drops, the pores close and the gas reverts to a solid state. It has now become a part of the polymer. This is why dye sublimation can't be done on natural materials, such as 100% cotton. Natural fibres and non-coated materials have no "pores" to open.

A dye impregnates colour into (not on to) a material and this colour change is permanent. Sublimation refers to changes from the solid, to the gaseous state without becoming liquid. A polymer consists of large molecules made up of a linked series of repeated simple molecules. Dye sublimation refers to solid dye particles that are changed into gas using heat and pressure, which then bond with any polymers present and change back into a solid. This means the composition of the polymer has changed, and no fading, cracking or peeling should occur because the colour is now part of the fabric.

The fluid stored in the inkjet cartridge is the carrier of the dye. The carrier stays on the paper and only the dye migrates from the paper to the substrate. The dye has little or no colour until heated, so what you see on the paper usually looks nothing like the final transferred image. Dark materials cannot be used with the sublimation process on made up garments.

It is important to remember that this is not ink sitting on top of the fabric, but rather dye that penetrates the fibre of the fabric. The dye particles are designed to bond with polyester, and ignore everything else.

SUN SMART

2021.22

OUR CLOTHING IS DESIGNED FOR SUN PROTECTION AND PRODUCED FROM FABRICS RATED FOR THEIR LEVEL OF ULTRAVIOLET (UV) PROTECTION

AUSTRALIAN NEW ZEALAND STANDARD

Here is the Australian/New Zealand Standard for Sun Protective Clothing and Swimwear, which is now considered the industry standard in rating such sun protective clothing UPF Ratings and Protection Categories:

UPF Rating	Protection Category	% UV radiation Blocked
UPF 15 - 24	Good	93.3 - 95.9
UPF 25 - 39	Very Good	96.0 - 97.4
UPF 40 - 50	Excellent	97.5 or more
UPF50+	Ultimate	



AUSSIE PACIFIC MINI WAFFLE

	Mean UPF	Mean UVA	Mean UVB	UPF Rating	UVR Protection Category	Report Number
Apple	61.3	3.8	1.3	50+	Ultimate Protection	CS1106431
Ashe	60.0	3.1	1.4	50+	Ultimate Protection	CS1111229
Black	48.2	1.9	2.1	40	Excellent Protection	CS1111229
Bottle	49.1	2.7	1.9	35	Very Good Protection	CS1111229
Burgundy	72.6	2.0	1.2	50+	Ultimate Protection	CS1111229
Charcoal	57.8	2.6	1.6	45	Excellent Protection	CS1111229
Chocolate	49.0	3.3	1.9	40	Excellent Protection	CS1111229
Gold	41.8	4.3	2.1	35	Very Good Protection	CS1111229
Hot Pink	58.6	3.5	1.5	45	Excellent Protection	CS1111229
Maroon	47.2	2.5	2.0	40	Excellent Protection	CS1106431
Navy	62.2	1.4	1.5	50	Excellent Protection	CS1106431
Orange	66.4	3.1	1.3	50+	Ultimate Protection	CS1111229
Purple	61.7	2.2	1.5	50+	Ultimate Protection	CS1111229
Red	86.5	2.1	1.0	50+	Ultimate Protection	CS1106431
Royal	102.5	2.4	0.9	50+	Ultimate Protection	CS1106431
Sky	48.2	6.0	1.6	40	Excellent Protection	CS1111229
Teal	56.2	3.7	1.5	50	Excellent Protection	CS1111229
White	47.5	3.9	1.9	40	Excellent Protection	CS1106431
Hi Viz Orange	47.5	3.9	1.9	40	Excellent Protection	CS1106431
Hi Viz Yellow	51.5	3.9	1.7	45	Excellent Protection	CS1203153

Results may vary slightly between each testing due to fabric variations. The figures above are true to the report number and are for a guide only.

AUSSIE PACIFIC BIRDS EYE

	Mean UPF	Mean UVA	Mean UVB	UPF Rating	UVR Protection Category	Report Number
Royal	51.8	3.0	1.7	45	Excellent Protection	CS12111093
Purple	58.8	3.1	1.5	45	Excellent Protection	CS12111093
Hot Pink	63.1	3.7	1.3	50+	Ultimate Protection	CS12111093
Bottle	83.7	1.5	1.1	50+	Ultimate Protection	CS12111093
Pacific Blue	83.0	2.8	1.1	50+	Ultimate Protection	CS12111093
White	82.9	1.8	1.0	50+	Ultimate Protection	CS12111093
Orange	62.6	2.2	1.4	50	Excellent Protection	CS12111093
Canary Yellow	48.0	3.7	1.8	40	Excellent Protection	CS12111093
Teal	71.8	3.3	1.2	50+	Ultimate Protection	CS12111093
Black	62.2	2.1	1.5	50+	Ultimate Protection	CS12111093
Red	71.5	2.4	1.3	50+	Ultimate Protection	CS12111093
Navy	67.8	1.8	1.4	50+	Ultimate Protection	CS12111093
Apple Green	74.4	2.9	1.1	50+	Ultimate Protection	CS12111093
Slate	38.9	3.2	2.4	30	Very Good Protection	CS12111093
Silver	77.8	4.0	1.0	50+	Ultimate Protection	CS12111093

Results may vary slightly between each testing due to fabric variations. The figures above are true to the report number and are for a guide only.

AUSSIE PACIFIC COTTON BACK

	Mean UPF	Mean UVA	Mean UVB	UPF Rating	UVR Protection Category	Report Number
Gold	79.5	1.9	1.1	50+	Ultimate Protection	CS1112089
Black	54.2	2.4	1.8	40	Excellent Protection	CS1112089
Navy	110.5	0.7	0.9	50+	Ultimate Protection	CS1112089
Purple	82.8	2.6	1	50+	Ultimate Protection	CS1203154
Pacific Blue	88.4	2	1.0	50+	Ultimate Protection	CS1112089
Red	64.9	3.1	1.5	50	Excellent Protection	CS1112089
Elec. Royal	82.6	2.1	1.1	50+	Ultimate Protection	CS1211094
Elec. Purple	124.1	1.3	0.8	50+	Ultimate Protection	CS1211094
Elec. Orange	77.7	2.5	1.2	50+	Ultimate Protection	CS1211094
Kawa green	99.4	1.9	0.9	50+	Ultimate Protection	CS1211094
Maroon	82.4	1.2	1.2	50+	Ultimate Protection	CS1211094
Ashe	97.5	2	0.9	45	Excellent Protection	CS1211094
Slate	65	2.7	1.4	45	Excellent Protection	CS1211094
Royal	112.3	0.8	0.9	50+	Ultimate Protection	CS1112089
Sage	79.2	1.9	1.0	50+	Ultimate Protection	CS1112089
Teal	98.2	2.3	0.9	50+	Ultimate Protection	CS1203154
White	38.2	5.3	2.2	30	Very Good Protection	CS1111228

Results may vary slightly between each testing due to fabric variations. The figures above are true to the report number and are for a guide only.

AUSSIE PACIFIC MICROKNIT

	Mean UPF	Mean UVA	Mean UVB	UPF Rating	UVR Protection Category	Report Number
Black	>300	0.9	0.1	50+	Ultimate Protection	CS1506809
Navy	192.8	0.8	0.4	50+	Ultimate Protection	CS1506809
Slate	273.5	0.5	0.3	50+	Ultimate Protection	CS1506809
Cyan	>300	0.6	0.2	50+	Ultimate Protection	CS1506809
Neon Green	148.5	2.6	0.5	50+	Ultimate Protection	CS1506809
Neon Orange	168.5	6.2	0.3	50+	Ultimate Protection	CS1506809
Neon Pink	253	3.9	0.3	50+	Ultimate Protection	CS1506809
Neon Yellow	>300	1.2	0.1	50+	Ultimate Protection	CS1506809

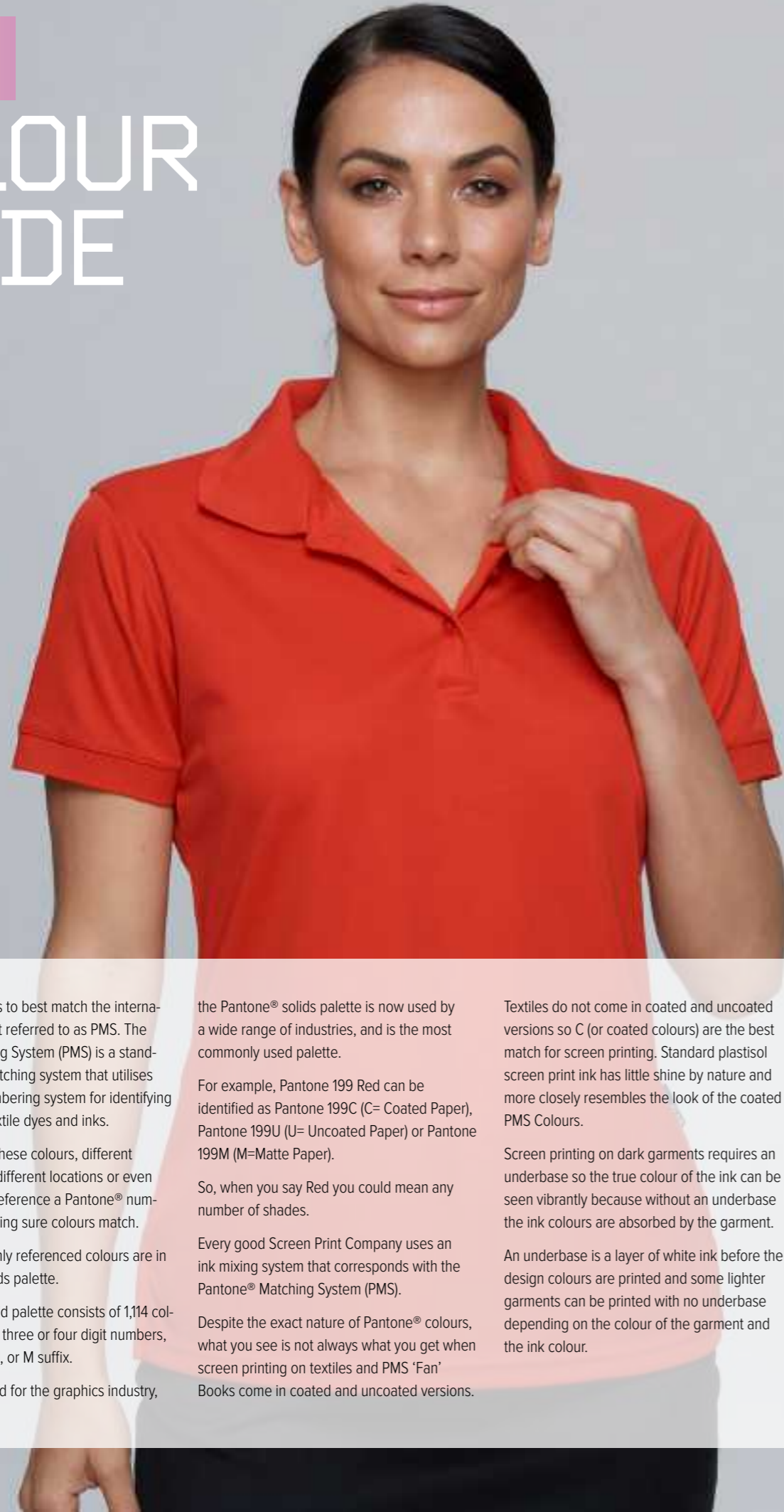
Results may vary slightly between each testing due to fabric variations. The figures above are true to the report number and are for a guide only.

PMS

COLOUR

GUIDE

2021.22



We dye our fabrics to best match the international colour pallet referred to as PMS. The Pantone® Matching System (PMS) is a standardised colour matching system that utilises the Pantone® numbering system for identifying colours in both textile dyes and inks.

By standardising these colours, different manufacturers in different locations or even countries can all reference a Pantone® numbered colour, making sure colours match.

The most commonly referenced colours are in the Pantone® solids palette.

The Pantone® Solid palette consists of 1,114 colours, identified by three or four digit numbers, followed by a C, U, or M suffix.

Originally designed for the graphics industry,

the Pantone® solids palette is now used by a wide range of industries, and is the most commonly used palette.

For example, Pantone 199 Red can be identified as Pantone 199C (C= Coated Paper), Pantone 199U (U= Uncoated Paper) or Pantone 199M (M=Matte Paper).

So, when you say Red you could mean any number of shades.

Every good Screen Print Company uses an ink mixing system that corresponds with the Pantone® Matching System (PMS).

Despite the exact nature of Pantone® colours, what you see is not always what you get when screen printing on textiles and PMS 'Fan'

Books come in coated and uncoated versions.

Textiles do not come in coated and uncoated versions so C (or coated colours) are the best match for screen printing. Standard plastisol screen print ink has little shine by nature and more closely resembles the look of the coated PMS Colours.

Screen printing on dark garments requires an underbase so the true colour of the ink can be seen vibrantly because without an underbase the ink colours are absorbed by the garment.

An underbase is a layer of white ink before the design colours are printed and some lighter garments can be printed with no underbase depending on the colour of the garment and the ink colour.

BLACK	PMS 425C	PMS 425C	PMS 424C	PMS COOL GREY 6C
BLACK	SLATE	CHARCOAL	ASHE	SILVER
PMS 296C	PMS 2945C	PMS 662C	PMS 639C	PMS 278C
NAVY	ELECTRIC ROYAL	ROYAL	PACIFIC BLUE	SKY
PMS 269C	PMS 269C	PMS 518C	PMS 7428C	PMS 476C
PURPLE	ELECTRIC PURPLE	BURGUNDY	MAROON	CHOCOLATE
PMS 187C	PMS 215C	PMS 173C	PMS 172C	PMS 171C
RED	HOT PINK	ORANGE (COTTON BACK)	ORANGE	FLOURO ORANGE
ORANGE	PMS 1505C	PMS 130C	PMS 116C	YELLOW
HI VIZ ORANGE	ELECTRIC ORANGE	GOLD	CANARY YELLOW	HI VIZ YELLOW
PMS 7474C	PMS 363C	PMS 360C	PMS 375C	PMS 560C
TEAL	KAWA GREEN	APPLE GREEN	FLURO GREEN	BOTTLE

NEON RANGE

PMS 1787C	PMS 1645C	PMS 375C	PMS 389C
NEON PINK	NEON ORANGE	NEON GREEN	NEON YELLOW
PMS 214C	PMS CYANC	PMS 3405C	PMS 675C
FUSHCIA	CYAN	KELLY GREEN	PINK

WINTER COLOURS

BLACK	PMS COOL GREY 10C	PMS COOL GREY 5C	PMS 296C	PMS 7428C
BLACK	CHARCOAL MARLE	GREY MARLE	NAVY FLEECE	MAROON
PMS 2945C	PMS 286C	PMS CYANC	PMS 425C	PMS 269C
ELECTRIC ROYAL	ROYAL	CYAN	SLATE	ELECTRIC PURPLE
PMS 200C	PMS 173C	PMS 1505C	PMS 363C	PMS 368C
RED	ORANGE	ELECTRIC ORANGE	KAWA GREEN	GREEN

DISCLAIMER: PMS Colours are a guide only and while we make every effort to ensure consistency of our colours, catalogue reproduction is not always 100%. To be certain, ask your distributor to source a sample for you. Dye lots can vary slightly from batch to batch (very rare however) despite our best quality control.



KEEP WARM

THIS WINTER
AP HOODIES
& JACKETS