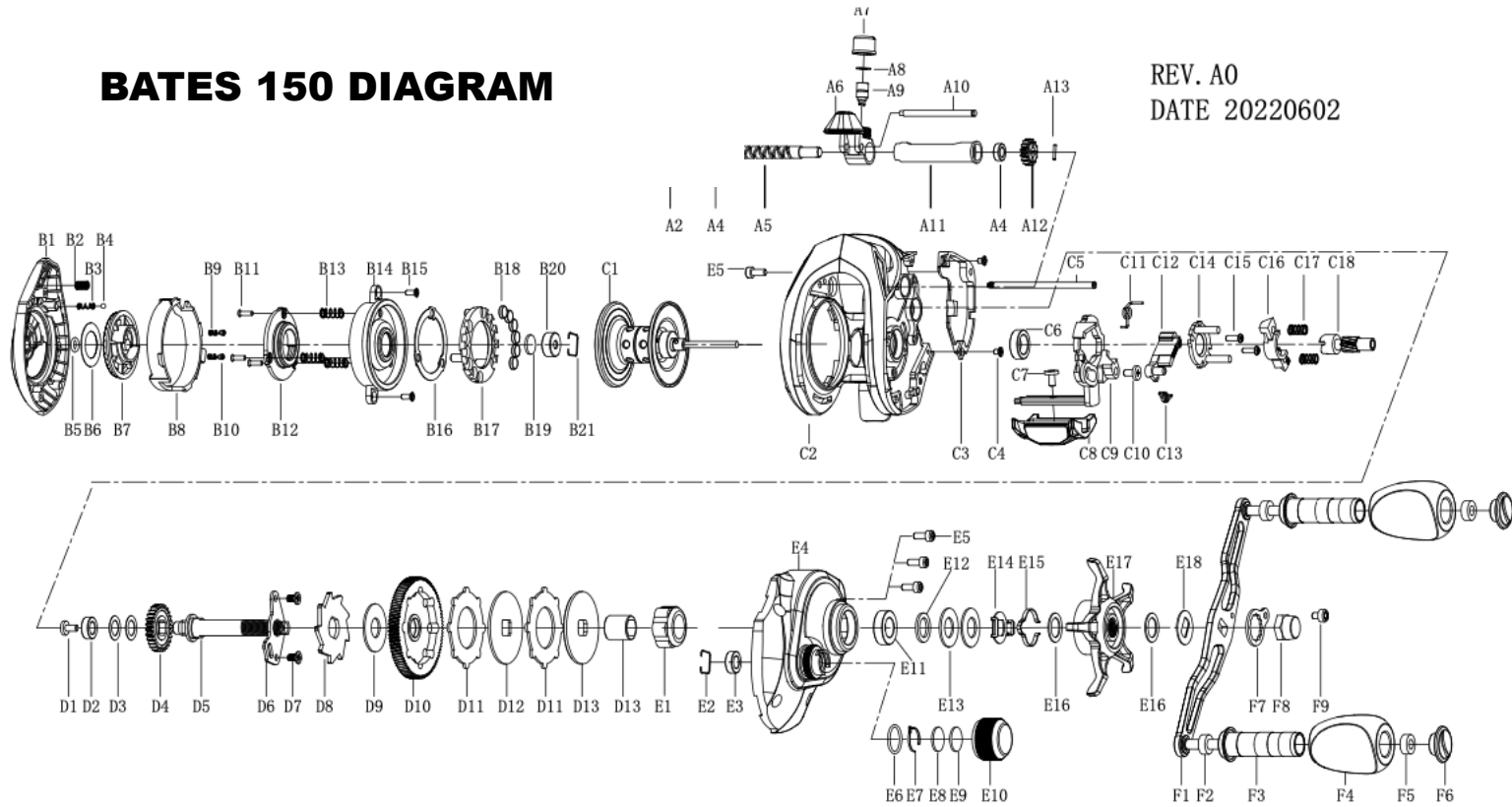


# BATES 150 DIAGRAM

REV. A0  
DATE 20220602



BATES 150 Part List											
Key No.	Description	Q'ty	Key No.	Description	Q'ty	Key No.	Description	Q'ty	Key No.	Description	Q'ty
A1	E-Clip **	1	B12	Slide Cam B	1	C15	Screw **	2	E7	Tension Knob Click Spring **	1
A2	Worm Shaft Washer **	1	B13	Spring **	3	C16	Pinion Yoke	1	E8	Spool Tension Shim	1
A3	Bearing Retainer	1	B14	Spool Cover	1	C17	Pinion Yoke Spring **	2	E9	Spool Tension Washer **	1
A4	Worm Shaft Bushing	2	B15	Spool Cover Screw **	2	C18	Pinion Gear	1	E10	Spool Tension Knob *	1
A5	Worm Shaft *	1	B16	Magnet Plate	1	D1	Worm Shaft Screw **	1	E11	Ball Bearing	1
A6	Line Guide Carrier Assembly	1	B17	Magnet Holder	1	D2	Ball Bearing	1	E12	Space Washer **	1
A7	Line Guide Carrier Screw *	1	B18	Magnet	6	D3	Space Washer	2	E13	Spring Disc **	2
A8	Line Guide Pawl Washer	1	B19	Spool Tension Shim	1	D4	O/S Drive Gear	1	E14	Drag Click Holder **	1
A9	Line Guide Pawl **	1	B20	Ball Bearing	1	D5	Main Gear Shaft ***	1	E15	Drag Click Spring **	1
A10	Stabilizer Bar **	1	B21	Clip Ring **	1	D6	Locking Plate **	1	E16	Space Washer **	2
A11	Worm Shaft Guide	1	C1	Spool Assembly *	1	D7	Screw **	2	E17	Star Drag *	1
A12	O/S Pinion Gear	1	C2	Frame *	1	D8	Trip Ratchet **	1	E18	Handle Washer **	1
A13	Pin **	1	C3	Frame Cover *	1	D9	Trip Ratchet Washer	1	F1	Handle Rivet Ass'y	1
B1	Palm Side Cover *	1	C4	Screw **	2	D10	Drive Gear *	1	F2	Handle Bushing	2
B2	Tethered Spring **	1	C5	Tethered pole **	1	D11	Carbon Drag Disc	2	F3	Handle Knob Insert *	2
B3	Locking Lever Spring **	1	C6	Ball Bearing	1	D12	Drag Washer **	1	F4	Handle Knob	2
B4	Locking Lever Ball **	1	C7	Thumb Bar Screw **	1	D13	Drag Plate **	1	F5	Handle Ball Bear	2
B5	O-Ring	1	C8	Thumb Bar *	1	D14	One Way Clutch Sleeve	1	F6	Handle Knob Cap *	2
B6	Magnet Dial Label	1	C9	Release Slider	1	E1	One Way Clutch	1	F7	Crank Arm Washer	1
B7	Magnet Dial.	1	C10	Release Slider Screw **	1	E2	Clip Ring **	1	F8	Crank Assembly Hex Cap **	1
B8	Locking Lever	1	C11	Release Slider Spring **	1	E3	Ball Bearing	1	F9	Crank Washer Set Screw **	1
B9	Click Spring **	2	C12	Kick Lever	1	E4	Gear Side Cover *	1			
B10	Click Pin **	2	C13	Kick Lever Spring	1	E5	Gear Side Cover Screw **	4			
B11	Screw **	3	C14	Pinion Yoke Holder	1	E6	O-Ring	1			

Material Key	
Plastic	
Anti-corrosion Coated Aluminum	*
Stainless Steel	**
Anti-corrosion Coated Copper	***