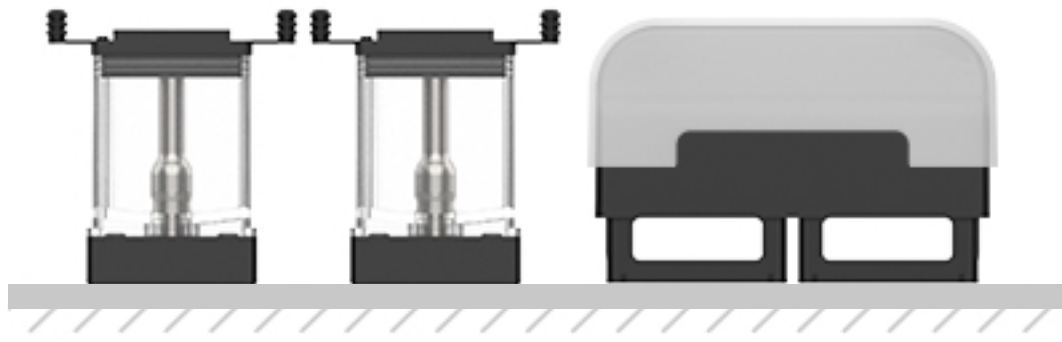


# FILLING INSTRUCTIONS

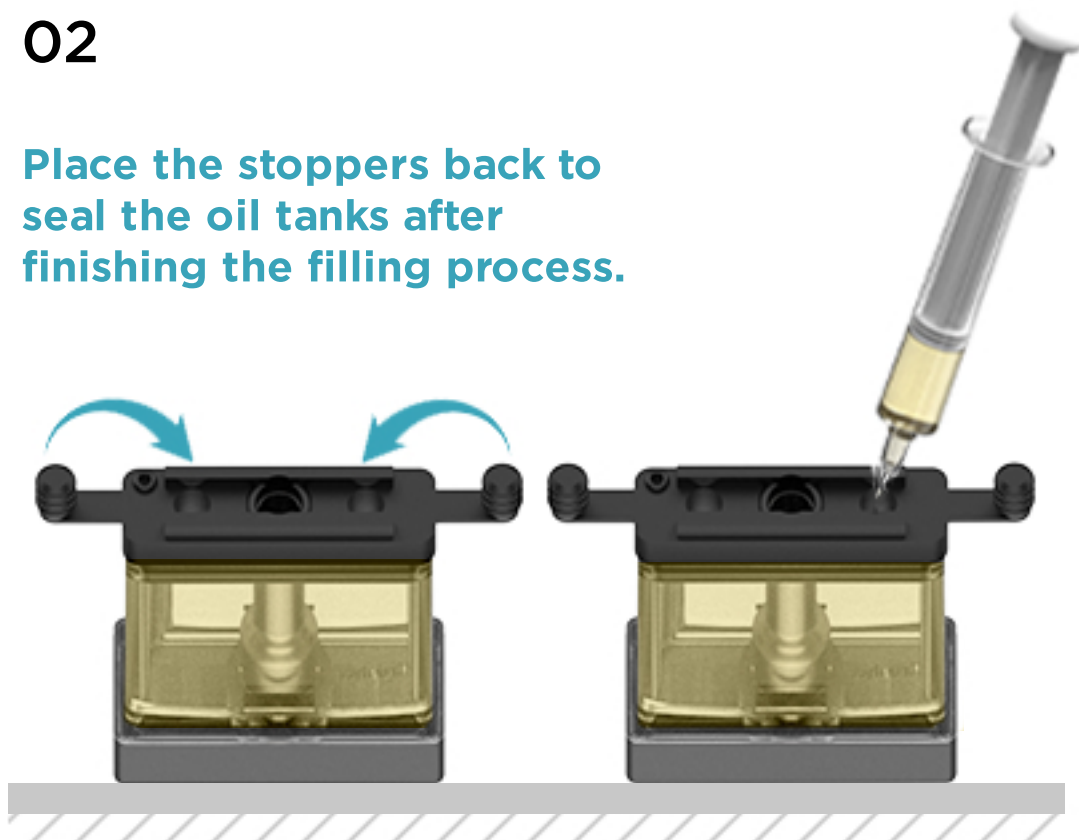
01



- Unpackage the product, make sure you have both the mouthpiece and the cartridge ready.
- Do not remove the silicone gasket during the filling process.
- Place the tank vertically upright on a tray.

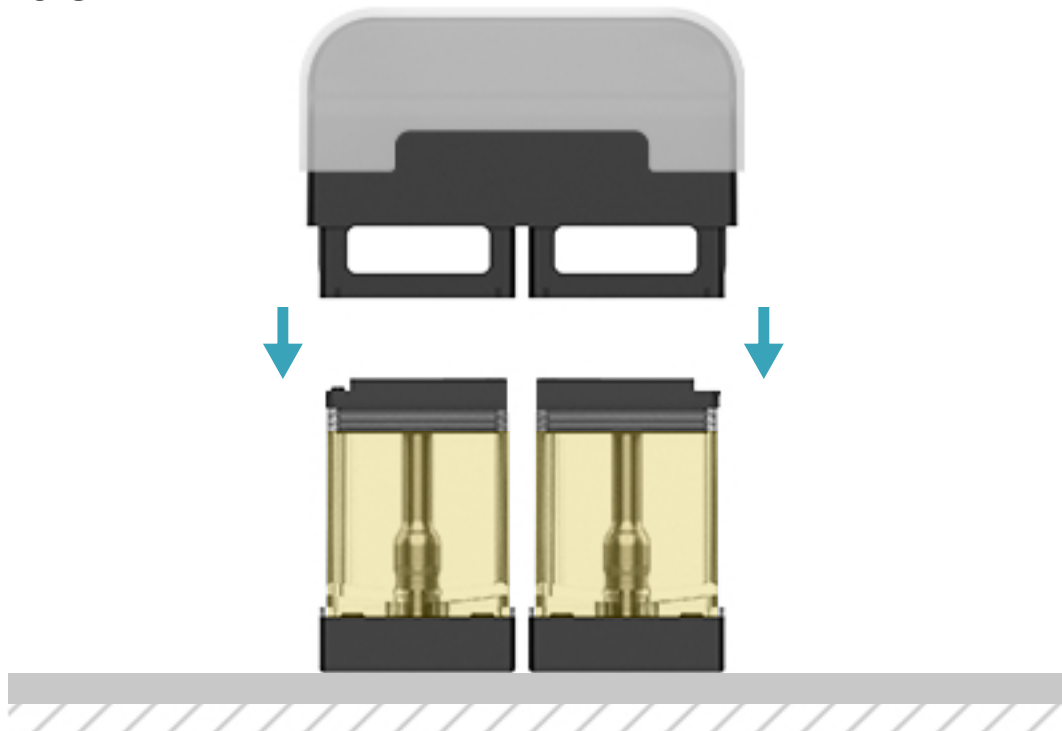
02

Place the stoppers back to seal the oil tanks after finishing the filling process.



- Pre-heat the oil to  $\leq 122$  degrees Fahrenheit.
- Fill the oil with a syringe or a machine, the recommended needle size is Gauge 16 (or  $\leq 1.8$ mm).
- Fill the oil according to the tank capacity through the open top, avoiding the center post.
- When using a needle, insert it to a depth of 2/3 of the oil tank and do not touch the bottom.

03



**\*Press machine required**

- Cap the mouthpiece onto the cartridge, make sure it is vertical to the tank and forced evenly.
- Do this within 1.5 minutes after filling the oil. For thinner consistencies, please cap it sooner to prevent leaking.

**After Filled**

(\*If you are using Live Resin or Live Rosin, please skip this step.)

- After filling and capping, invert the cartridge upside down to ensure the oil cools away from the coil. This is to prevent leakage.
- Once the cartridge has been flipped upside down for 30 minutes, flip it right side up for another 30 minutes. This allows the oil to fully saturate the coil and to avoid potential dry hits.
- Store the final product in a dry, cool place that avoids direct sunlight. Storage temperatures should be between 68-77 degrees Fahrenheit.



**Additional Info**

- Once it is filled, you will notice a difference in volume as the ceramic coil absorbs the oil. This will create a headspace in the oil tank, with a potential reduction of up to 10%.
- Please finish this product within 2 weeks for the best taste.