

REMOTE CONTROL VALVES

PanBlast remote control valves are for pressure vessel air inlet and/or air outlet control, and are available in both BSP and NPT thread configurations.



Air Inlet valve variants include Sola, Tandem and Helix types.

- For small capacity blast pots



Sola 5 Inlet Valve Assembly
BAC-RC-PB-0017
Page 106 to 109



Sola 5 NPT Inlet Valve Assembly
BAC-RC-PB-0380
Page 110 to 113

- For small, large, pressure hold & bulk blast pots



3/4" Tandem NPT Valve Assembly
BAC-RC-PB-0274
Page 114 to 117



1" Tandem NPT Valve Assembly
BAC-RC-PB-0275
Page 118 to 121



1-1/4" Tandem NPT Valve Assembly
BAC-RC-PB-0276
Page 122 to 125



1-1/2" Tandem NPT Valve Assembly
BAC-RC-PB-0277
Page 126 to 129

- For medium capacity blast pots



Sola 10 NPT Inlet Valve Assembly
BAC-RC-0208-03
Page 130 to 133

- For large capacity blast pots



Sola 30 NPT Inlet Valve Assembly
BAC-RC-PB-0221
Page 134 to 137

- For large capacity blast pots



Helix 100 Inlet Valve Assembly
BAC-RC-PB-0305
Page 138 to 141



Helix 100 NPT Inlet Valve Assembly
BAC-RC-PB-0309
Page 142 to 145

AIR INLET



Air exhaust valve variants include Sola, HiFlo, Diaphragm Dump and Helix types.

- Diaphragm activated



Sola 5 NPT Exhaust Valve
BAC-RC-PB-0018
Page 146 to 149

- Piston activated depressurization



HiFlo NPT Exhaust Dump Valve Assembly
BAC-RC-PB-0197
Page 162 to 165

- Fast diaphragm depressurization



1" NPT Diaphragm Dump Valve
BAC-RC-PB-0361
Page 158 to 161

- Piston activated depressurization



Helix 50 Outlet Valve Assembly
BAC-RC-PB-0308
Page 150 to 153



Helix 50 NPT Outlet Valve Assembly
BAC-RC-PB-0310
Page 154 to 157

- Cyclonic filtration of fines and dust from exhaust air



AbraFlo NPT Abrasive Trap II Assembly
BAC-VA-0353-00
Page 166 to 169

AIR EXHAUST

- Durable duty
- Inlet/exhaust hose pinch combo



Kombi NPT Remote Control Valve
BAC-RC-0143-02
Page 180 to 183

- Heavy duty
- Inlet/exhaust hose pinch combo



Kombi II NPT Remote Control Valve
BAC-RC-0509-00
Page 184 to 187

- High flow
- Inlet/exhaust hose pinch combo



Kombi III NPT Remote Control Valve
BAC-RC-0662-00
Page 188 to 191

- Lightweight
- Inlet/exhaust combo



UniFlo Valve Assembly with Fittings
BAC-RC-PB-0014
Page 172 to 175

- Modular
- Piston/diaphragm combination



Helix 150 Valve Assembly
BAC-RC-PB-0307
Page 192 to 195

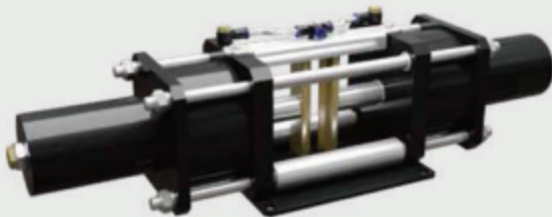


Helix 150 NPT Valve Assembly
BAC-RC-PB-0311
Page 196 to 199

COMBINATION

★ ★ ★ ★ ☆
Pinch valve variants include Pinch Valve and Safe-T-Pinch.

- Dual ram
- Safety spring closure
- Wide blast hose entry throat



Safe-T-Pinch Valve Assembly
BAC-RC-0565-00
Page 204 to 207

- Single ram
- Rugged cast iron construction



Pinch Valve NPT Assembly
BAC-RC-0188-01
Page 200 to 203

PINCH

REMOTE CONTROL HANDLES

PanBlast remote control handles are for control of pressure blast pot operation remotely, and are available in both pneumatic and electric configurations (for extended control distance and faster response times).



Air bleed variants include AirFlo and QuikStop IIS.

- For small, large, pressure hold & bulk blast pots



AirFlo Pneumatic Control Handle
BAC-RC-PB-0085
Page 214 to 217

- For small, large, pressure hold & bulk blast pots



AirFlo NPT Pneumatic Control Handle
BAC-RC-PB-0139
Page 218 to 221

- Hands-free operation, safety ball and hand strap



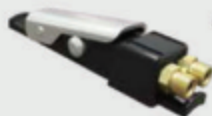
QuikStop IIS Pneumatic Control Handle
BAC-RC-0236-04
Page 210 to 213

AIR BLEED



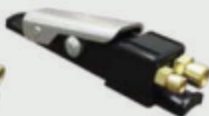
Non-bleed variants include AirStop, AirStop II, AirStop IV and AutoLok.

- Lightweight, safety lock-out button



AirStop Pneumatic Control Handle
BAC-RC-PB-0084
Page 222 to 225

- Lightweight, safety lock-out button



AirStop NPT Pneumatic Control Handle
BAC-RC-PB-0180
Page 226 to 229

- Robust wide lever, dual stage lever lock



AirStop II NPT Pneumatic Control Handle
BAC-RC-PB-0164
Page 230 to 233

- Extended lever, safety lock-out button



AirStop IV NPT Pneumatic Control Handle
BAC-RC-0549-00
Page 238 to 241

- Compact, quick blast hose attachment



AutoLok Control Handle Assembly
BAC-RC-PB-0039
Page 234 to 237

NON BLEED



Electric variants include AirFlo, AirStop, AirStop II and QuikStop IIS.

- Weather proof switch, long lever type



AirFlo Electric Control Handle
BAC-RC-PB-0104
Page 246 to 249

- Sealed encased switch, compact design



AirStop Electric Control Handle
BAC-RC-0237-05
Page 250 to 253

- Enclosed switch, extended service life



AirStop II Electric Control Handle
BAC-RC-0356-02
Page 254 to 257

- Ergonomic operation, replaceable switch



QuikStop IIS Electric Control Handle
BAC-RC-0612-00
Page 242 to 245

ELECTRIC



Pneumatic Twinline Hose variants.

- Color coded, quick disconnects



**10M (33') Twinline
Hose Assembly**
BAC-RC-PB-0013
Page 266 to 267

- Color coded, quick disconnects



**20M (66') Twinline
Hose Assembly**
BAC-RC-PB-0012
Page 266 to 267

- Color coded extension, quick disconnects



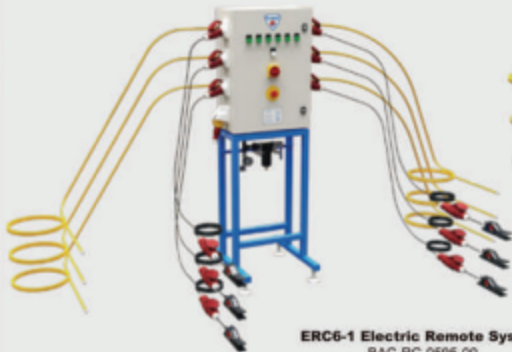
**20M (66') Twinline EXT/
Hose Assembly**
BAC-RC-PB-0026
Page 266 to 267

TWINLINE HOSES



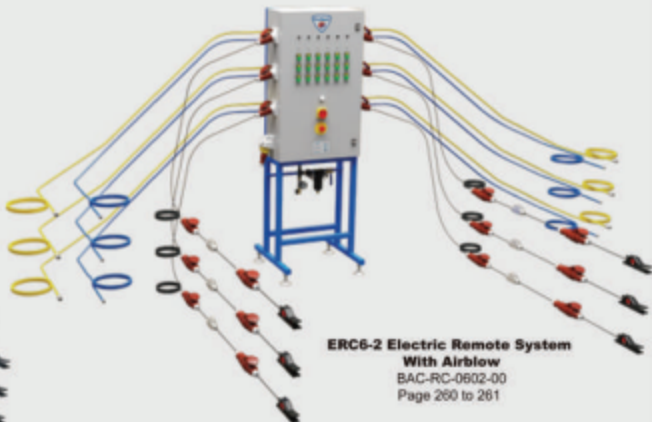
Electric Remote System.

- Master control, integrated six operator system



ERC6-1 Electric Remote System
BAC-RC-0595-00
Page 258 to 259

- Six operator, independent air blow down function



**ERC6-2 Electric Remote System
With Airblow**
BAC-RC-0602-00
Page 260 to 261



- Single operator, 20m (66') / 40m (132') / 60m (198') remote conversion kit

Conversion Kit - Single Operator
20m (66') Remote Conversion Kit
40m (132') Remote Conversion Kit
60m (198') Remote Conversion Kit

20M: BAC-RC-0118-02
40M: BAC-RC-0025-02
60M: BAC-RC-0600-01
Page 262 to 265

ELECTRIC REMOTE SYS

Western Australia 260 Welshpool Road Welshpool 6106 Tel: 08 9208 2000 Fax: 08 9208 2099	Victoria 82 Logis Boulevard Dandenong 3105 Tel: 03 9565 5100 Fax: 03 9565 5199	Queensland 1,022 French Avenue Brendale Qld 4500 Tel: 07 3293 7000 Fax: 07 3293 7099	New South Wales 28 Bryant Street Pachraw NSW 2211 Tel: 02 8708 5158 Fax: 02 8708 5195	South Australia 25 Wing Street Wingfield SA 5013 Tel: 08 8346 7700 Fax: 08 8346 7799
---	--	--	---	--

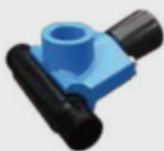
ABRASIVE METERING VALVES

Abrasive metering valves are used to control media feed rate from the blast pot storage hopper into the blast hose pusher line, and are available in manual/automatic plunger, metering disc and ball valve configurations.



Manually operated for pressure release blast pots, low profile with precision media metering.

- All abrasive media
- Metering knob with urethane sleeve



Fina Valve 1-1/4" M X 1-1/4" M Assembly
Fina Valve 1-1/2" M X 1-1/2" M Assembly
Fina Valve 1-1/4" M X 1-1/2" M Assembly
Fina Valve 1" F X 1-1/2" M Assembly
 BAC-VA-PB-0060
 BAC-VA-PB-0061
 BAC-VA-PB-0062
 BAC-VA-PB-0063

Page 354 to 357



Fina Valve NPT 1-1/4" M X 1-1/4" M
Fina Valve NPT 1-1/2" M X 1-1/2" M
Fina Valve NPT 1-1/4" M X 1-1/2" M
Fina Valve NPT 1" F X 1-1/2" M
 BAC-VA-PB-0141
 BAC-VA-PB-0143
 BAC-VA-PB-0144
 BAC-VA-PB-0145

Page 358 to 361

- All abrasive media
- Abrasive drain port
- Metering knob with urethane sleeve
- Improved serviceability



Fina II Valve 1-1/4" M X 1-1/4" M
Fina II Valve 1-1/2" M X 1-1/2" M
Fina II Valve 1-1/4" M X 1-1/2" M
Fina II Valve 1" F X 1-1/2" M
Fina II Valve 1/2" M X 3/4" F
 BAC-VA-0277-00
 BAC-VA-0278-00
 BAC-VA-0279-00
 BAC-VA-0280-00
 BAC-VA-0297-00

Page 362 to 365



Fina II Valve NPT 1-1/4" M X 1-1/4" M
Fina II Valve NPT 1-1/2" M X 1-1/2" M
Fina II Valve NPT 1-1/4" M X 1-1/2" M
Fina II Valve NPT 1" F X 1-1/2" M
 BAC-VA-0281-00
 BAC-VA-0282-00
 BAC-VA-0283-00
 BAC-VA-0284-00

Page 366 to 369

MANUAL PLUNGER



Traditional disc & lever media metering, general contractor usage for fast start-up and shutdown applications.

- All abrasive media
- Low profile
- Lever handle operated



Junior Plana NPT Valve
 BAC-VA-0335-00

Page 394 to 397

- Not for metallic media
- 45 degree configuration
- Lever handle operated



Plana Valve Assembly
 BAC-VA-PB-0031

Page 398 to 401

- All abrasive media
- 45 degree configuration
- Lever handle operated
- Easy maintenance



Plana II Valve Assembly
 BAC-VA-0318-00

Page 402 to 405

- All abrasive media
- 45 degree configuration
- Lever handle operated
- Easy maintenance



Plana II NPT Valve Assembly
 BAC-VA-0319-00

Page 406 to 409

METERING DISC



Auto pilot air operated for pressure hold & pressure release systems, media saving characteristics, optional remote abrasive cut off.



- For fine media usage
- Tungsten plunger

Corsa NPT 1-1/4" with Urethane Sleeve
Corsa NPT 1-1/2" with Urethane Sleeve
 BAC-VA-PB-0164
 BAC-VA-PB-0162

Page 370 to 373



- For fine media usage
- Tungsten plunger
- Extended life

Corsa NPT 1-1/4" with Tungsten Sleeve
Corsa NPT 1-1/2" with Tungsten Sleeve
 BAC-VA-PB-0165
 BAC-VA-PB-0163

Page 374 to 377

- All abrasive media
- Easy maintenance
- Solid tungsten plunger & sleeve
- Abrasive drain port



Corsa II 1-1/4" with Urethane Sleeve
Corsa II 1-1/2" with Urethane Sleeve
 BAC-VA-PB-0117
 BAC-VA-PB-0118

Page 378 to 381



Corsa II NPT 1-1/4" with Urethane Sleeve
Corsa II NPT 1-1/2" with Urethane Sleeve
 BAC-VA-PB-0186
 BAC-VA-PB-0191

Page 386 to 389

- All abrasive media
- Easy maintenance
- Solid tungsten plunger & sleeve
- Abrasive drain port
- Extended life



Corsa II 1-1/4" with Tungsten Sleeve
Corsa II 1-1/2" with Tungsten Sleeve
 BAC-VA-PB-0269
 BAC-VA-BP-0114

Page 382 to 385



Corsa II NPT 1-1/4" with Tungsten Sleeve
Corsa II NPT 1-1/2" with Tungsten Sleeve
 BAC-VA-PB-0192
 BAC-VA-PB-0187

Page 390 to 393

AUTOMATIC PLUNGER



Economical ball valve operation for applications that do not require precise metering.



- Suited to garnet media
- Fixed urethane metering orifice
- Stainless steel body

Enviro Valve Assembly
 BAC-VA-PB-0112

Page 410 to 411

BALL VALVE

BLAST NOZZLES

The PanBlast™ blast nozzle range is suited for general and specialty blasting applications. They are available in durable tungsten or boron carbide liners and feature straight, venturi or injector nozzle designs, and are typically fitted with aluminum jacket protection.



CAT-1501-01-00 Page 514 to 515



ATN-2S



ATN-3S



ATN-4S



ATN-5S



ATN-6S



ATN-8S

- Durable tungsten carbide liner
- For smaller pots, cabinets and pipe blasting tools

ATN-S SERIES



CAT-1501-01-00 Page 514 to 515



ABN-2S



ABN-3S



ABN-4S



ABN-5S



ABN-6S



ABN-8S

- Extended life boron carbide liner
- For smaller pots, cabinets and pipe blasting tools

ABN-S SERIES



CAT-1501-02-00 Page 516 to 517



ATN-3M



ATN-4M

- Enlarged blast pattern
- Economical tungsten carbide liner
- For smaller pots, cabinets and pipe blasting tools

ATN-M SERIES



CAT-1501-02-00 Page 516 to 517



ATN-5T



ATN-6T

- Enlarged blast pattern
- Economical tungsten carbide liner
- For smaller pots, cabinets and pipe blasting tools

ATN-T SERIES



CAT-1502-01-00 Page 518 to 519



ATN-4



ATN-5



ATN-6



ATN-7



ATN-8

- Durable tungsten carbide liner
- Wide throat long venturi
- Coarse contractor thread prevents freezing

ATN SERIES



CAT-1502-01-00 Page 518 to 519



ABN-4



ABN-5



ABN-6



ABN-7



ABN-8

- Extended life boron carbide liner
- Wide throat long venturi
- Coarse contractor thread prevents freezing

ABN SERIES



CAT-1502-03-00 Page 520 to 521

- Economical hardened alloy liner
- Long venturi
- Can be used with standard nozzle holders



CVN-5



CVN-6



CVN-7



CVN-8

CVN SERIES



CAT-1503-01-00 Page 522 to 523



ATV-5



ATV-6



ATV-7



ATV-8

- 35% wider blast pattern for higher productivity
- Durable tungsten carbide liner
- Dual venturi configuration
- Coarse contractor thread prevents freezing

ATV SERIES



CAT-1503-02-00 Page 524 to 525



AIN-4



AIN-5



AIN-6



AIN-7



AIN-8

- Dust-free slurry blasting
- Durable tungsten carbide liner
- Adjustable water atomization
- Coarse contractor thread prevents freezing

AIN SERIES



CAT-1504-01-00 Page 526 to 527



4x1 2" UNC



4x3 2" UNC



5x1 2" UNC



5x3 2" UNC



6x1 2" UNC



6x3 2" UNC



4x1 1-1/4" NPSM



4x3 1-1/4" NPSM



5x1 1-1/4" NPSM



5x3 1-1/4" NPSM



6x1 1-1/4" NPSM



6x3 1-1/4" NPSM

- Corner and angle blasting
- Durable tungsten carbide liner
- Available in single or triple outlets
- Coarse contractor thread prevents freezing

SIDEWINDER SERIES



Wet Head Assembly

CAT-1505-01-00
Page 528 to 529

- Dust reducing water jacket
- Adjustable water ring
- Can be fitted to most commercial nozzles



Hypodermic Needle Gauge

CAT-1505-02-00
Page 532 to 533

- Blast pressure measurement at nozzle
- Practical and economical
- Can be used with most commercial nozzles



Aurora LED Light

CAT-1505-03-00
Page 534 to 535

- Enhance blasting visibility
- Long life LED lamp with no heat generation
- Can be fitted to most commercial nozzles

ACCESSORIES

COUPLINGS & NOZZLE HOLDERS

The PanBlast™ range of couplings and nozzle holders are manufactured from a variety of materials to suit different application requirements. The lightweight, durable and precision fit nylon series is ideal for general blasting applications. For harsh operating environments or heavy hose dragging applications, zinc plated steel couplings in conjunction with aluminum nozzle holders will ensure extended durability.



CAT-1301-03-00 Page 498 to 499



- Lightweight
- Excellent sealing & precise coupling

NYLON COUPLINGS



CAT-1302-01-00 Page 500 to 501



- Rugged & heavy duty
- Zinc plated for corrosion resistance

STEEL COUPLINGS



CAT-1301-04-00 Page 506 to 507



- For blast hose sealing against coupling
- Manufactured from virgin natural rubber

COUPLING GASKETS



CAT-1301-04-00 Page 506 to 507



- Ensures coupling safety
- Manufactured from spring steel

LOCKING PINS



CAT-1301-01-00 Page 496 to 497



- Lightweight
- Excellent sealing
- Contractor coarse thread prevents freezing

NYLON NOZZLE HOLDERS



CAT-1303-01-00 Page 502 to 503

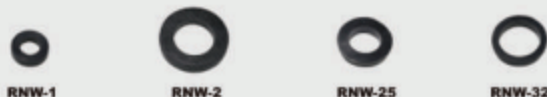


- Heavy duty
- Contractor coarse thread prevents freezing

ALUMINUM NOZZLE HOLDERS



CAT-1301-03-00 Page 498 to 499



- For nozzle sealing against holder
- Manufactured from virgin natural rubber

NOZZLE WASHERS

CLOSED CIRCUIT BLASTERS

PanBlast™ Closed Circuit Blasters are portable dust free blasting units operated by compressed air; and are available in compact light-duty suction blast and heavy-duty pressure blast variants. Both systems are suited for touch up blasting, weld seam blasting, roll repair / etching and plant maintenance.



- Lightweight, compact and portable
- Continuous cycle blast & vacuum in single process
- Compressed air driven venturi vacuum
- Suitable for most abrasive media types



**AER85 Light Duty
Closed Circuit Blaster**
CAT-0801-01-00
Page 414 to 417



LIGHT DUTY



- Ergonomic "Hands-Free" lightweight handle operation
- Multi-pass ultra high efficiency cyclonic separator
- Fully adjustable abrasive reclaiming for all media types
- Pressure-hold Corsa II abrasive metering valve
- Cartridge dust collector with reverse pulse jet cleaning
- Long life boron carbide venturi blast nozzle



**AER215 Heavy Duty
Closed Circuit Blaster**
CAT-0802-01-00
Page 418 to 421



HEAVY DUTY

ABRASIVE RECYCLING SYSTEMS

PanBlast™ Abrasive Recycling Systems are designed for use with single or dual pressure blast pots. Cleaning of abrasives ensures maximum blasting productivity with less airborne dust released, and less wear and tear on associated components while achieving consistency in surface standard cleanliness and profiles.



- Lightweight, compact and portable
- Compressed air driven via twin venturi ejectors
- 10m (33 ft) vacuum hose with abrasive pick up wand
- Vacuum recovery capacity of 1,000 kg (2,200 lbs) per hour



Pow Air Vac Assembly
CAT-0901-01-00
Page 424 to 427

LOW VOLUME



- Fully adjustable abrasive air wash system for all media types
- Media recycling rate of 3,000 kg (6,600 lbs) per hour
- Single cartridge reverse pulse jet dust collector
- Single-phase electrical power
- Suited for use with a single 200 litres (6 ft³) blast pot
- Optional height extensions and storage hoppers
- Adaptable for use as a blast room sweep in recovery system



ProFlo Abrasive Recycling System
CAT-0902-01-00
Page 428 to 431

Extended ProFlo Recycling System
CAT-0902-02-00
Page 432 to 435

MEDIUM VOLUME



- Fully adjustable abrasive air wash system for all media types
- Media recycling rate of 7,000 kg (15,400 lbs) per hour
- Twin cartridge reverse pulse jet dust collector
- Three-phase electrical power
- Suited for use with dual 200 litres (6 ft³) blast pots
- Optional height extensions and storage hoppers
- Adaptable for use as a blast room sweep in recovery system



UltraFlo Abrasive Recycling System
CAT-0903-01-00
Page 436 to 439

UltraFlo Extended Recycling System
CAT-0903-02-00
Page 440 to 443

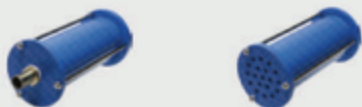
HIGH VOLUME

BLAST POT ACCESSORIES

The PanBlast™ range of blast pot accessories may be used for both generic and PanBlast™ pressure blast pots. Each quality component contributes to proper equipment functioning, durability, and operational safety of pressure blast pots.



CAT-0403-01-00 Page 270 to 271



- 19mm (3/4") barb fitting connects to most remote exhaust valves
- Discharge noise reduction of up to 70%

EXHAUST MUFFLER



CAT-0403-01-00 Page 270 to 271



- Safety relief valves for pressurized systems
- 100% Tested for relief pressure
- 8.7 Bar (125 psi) & 10.4 Bar (150 psi) versions

PRESSURE RELIEF VALVES



CAT-0403-01-00 Page 270 to 271



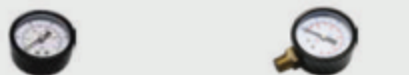
13 mm (1/2") 19 mm (3/4") 25 mm (1") 32 mm (1-1/4")

- Prevents abrasive blow back to extend service life of remote control valve
- 15 Bar (217 psi) pressure rating

NON RETURN VALVES



CAT-0403-01-00 Page 270 to 271



6 mm (1/4") Rear Entry 6 mm (1/4") Base Entry

- Displays compressed air supply pressure
- Horizontal & vertical configurations
- Compact & economical

PRESSURE GAUGES



CAT-0403-01-00 Page 270 to 271



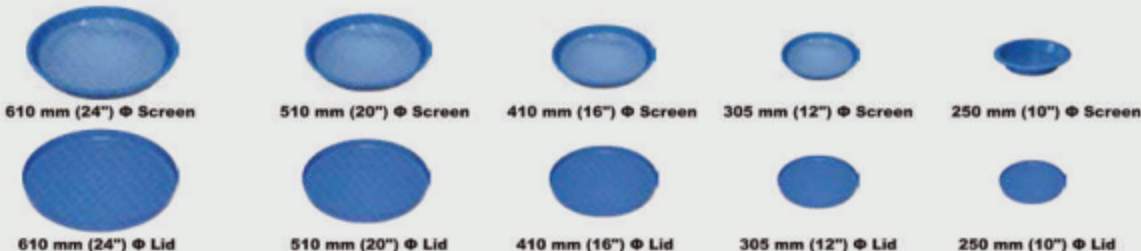
6 mm (1/4") 10 mm (3/8") 13 mm (1/2") 19 mm (3/4") 25 mm (1") 32 mm (1-1/4") 38 mm (1-1/2")

- Full bore construction for maximum flow rate
- Constructed from corrosion resistant brass

BALL VALVES



CAT-0403-05-00 Page 274 to 275



610 mm (24") ⌀ Screen 510 mm (20") ⌀ Screen 410 mm (16") ⌀ Screen 305 mm (12") ⌀ Screen 250 mm (10") ⌀ Screen

610 mm (24") ⌀ Lid 510 mm (20") ⌀ Lid 410 mm (16") ⌀ Lid 305 mm (12") ⌀ Lid 250 mm (10") ⌀ Lid

- Screen prevents entry of particles larger than 6mm (1/4") into blast pot
- Lid prevents entry of moisture and foreign objects into blast pot

POT SCREENS & LIDS



- Constructed from polyurethane or virgin rubber for excellent sealing
- Various styles available to suit blast pot internal plumbing layout

CAT-0403-02-00 Page 272 to 273



POP UP VALVES AND SEATING RINGS



CAT-0403-06-00 Page 276 to 277



- Commercial fittings to ensure adequate air volume and minimal pressure loss
- Available in various styles to suit equipment configuration

SPUD FITTINGS



CAT-0403-06-00 Page 276 to 277



13 mm (1/2")	Perlm
19 mm (3/4")	Perlm
25 mm (1")	Perlm
32 mm (1-1/4")	Perlm
38 mm (1-1/2")	Perlm
50 mm (2")	Perlm

- Commercial air supply hose to ensure adequate air volume with minimal pressure loss to equipment
- Available in various sizes to suit equipment requirements

COMPRESSED AIR HOSES



CAT-0403-06-00 Page 276 to 277



- Commercial clamps to ensure secure coupling of compressed air lines to equipment
- Available in various sizes to suit equipment requirements

HOSE CLAMPS



CAT-0403-06-00 Page 276 to 277



- Commercial fittings for coupling of compressed air lines to equipment
- Available in various sizes to suit equipment requirements

HOSE COUPLINGS