

FastMig X

INTELLIGENT, FLEXIBLE, UPGRADABLE



FastMig X



INTELLIGENT, FLEXIBLE, UPGRADABLE

Kemppi's FastMig X product series offers highly specialized welding solutions and superior welding quality for demanding industrial applications. It features three alternative high-end configuration recommendations for three different purposes: FastMig X Regular for robust workshop use a MIG/MAG pulse welding, mainly for welding thick plates, FastMig X Pipe for pipe and root welding and FastMig X Intelligent for demanding welding applications, for all metals and processes, including welding of thin sheets.

All configurations are equipped with either the FastMig X 350 or the FastMig X 450 power source, which is a multi-process CC/CV power source that is ideal for synergic and pulsed MIG/MAG welding, MMA welding, and TIG welding. Used in configuration with WFX wire feeders, they form a welding system that easily meets every welding need and the quality management requirements of any metal fabrication workshop.

Additionally, all three configurations come with the Cool X cooling unit.

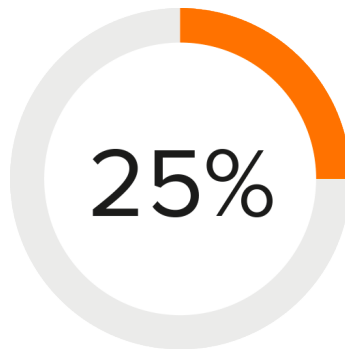


KEY BENEFITS



FASTER WELDING

Boost your efficiency by utilizing up to 30 % faster travel speeds with WiseFusion



LOWER HEAT INPUT

Reduce distortion and time consuming straightening work and improve the impact toughness of high strength steels with WiseFusion



BEST REACH ON THE MARKET

Distance and access will no longer be a problem with the SuperSnake subfeeder accessory

BENEFITS

- Multi-process power solution: MIG, 1-MIG, pulsed MIG, MMA, and TIG
- Arc Mobile Control brings flexible way to use and control the welding machine
- WiseRoot+ for optimized root welding
- WiseThin + for optimized sheet and position welding: Mixed gas quality with lower cost CO₂ shielding gas
- Precise arc voltage function measures and shows the actual arc voltage on the display
- Save time by combining two wire feeders on the same power source for alternative filler wires
- SuperSnake subfeeder connectivity for maximum reach



PRODUCT OPTIONS



FastMig X 350 Power source

Provides 350 A with 80% duty cycle. Suitable for generator use.



FastMig X 450 Power source

Provides 450 A with 60% duty cycle. Suitable for generator use.



FastMig X 350 (400 V) MV Power source

FastMig X 350 (400 V) MV power source is a multi-voltage unit for demanding applications and welding.



WFX 200 Wire feeder

For Ø 200 mm wire spools. Strong double-skin plastic casing with a reliable DuraTorque wire feed mechanism. Built-in arc voltage measurement.



WFX 300 Wire feeder

For Ø 200/300 mm wire spools. Strong double-skin plastic casing with a reliable DuraTorque wire feed mechanism. Built-in arc voltage measurement.



WFX 200 P Fe Wire feeder

For steel pipe welding with Ø 200 mm wire spools. Strong double-skin plastic casing with a reliable DuraTorque wire feed mechanism. Built-in arc voltage measurement.



WFX 200 P Ss Wire feeder

For stainless steel pipe welding with Ø 200 mm wire spools. Strong double-skin plastic casing with a reliable DuraTorque wire feed mechanism. Built-in arc voltage measurement.



WFX 300 P Fe Wire feeder

For steel pipe welding with Ø 200/300 mm wire spools. Durable double-skin plastic casing with a strong two-motor GT04 wire feed mechanism. Built-in arc voltage measurement.



WFX 300 P Ss Wire feeder

For stainless steel pipe welding with Ø 200/300 mm wire spools. Durable double-skin plastic casing with a strong two-motor GT04 wire feed mechanism. Built-in arc voltage measurement.



WFX 200 AMC Wire feeder

For welding high-strength steels and aluminum with Ø 200 mm wire spools. Strong double-skin plastic casing with a reliable DuraTorque wire feed mechanism. Built-in arc voltage measurement. Compatible with the ARC Mobile Control app.



WFX 300 AMC Wire feeder

For welding high-strength steels and aluminum with Ø 200/300 mm wire spools. Strong double-skin plastic casing with a reliable DuraTorque wire feed mechanism. Built-in arc voltage measurement. Compatible with the ARC Mobile Control app.



WiseFusion

A welding function that ensures consistent weld quality in all positions by automatically regulating arc length. Creates and maintains an optimal short-circuit characteristic in pulsed MIG/MAG and spray-arc welding.



WiseRoot+

Optimized short arc process for productive root pass welding. Excellent weld quality through control of arc voltage and timing of filler metal droplet transfer. Gives higher speed than MMA, TIG or MIG/MAG short arc welding.



WisePenetration

A welding function for ensured penetration in synergic MIG/MAG welding. Delivers constant power to the weld pool regardless of changes in welding gun orientation or distance between the welding gun and work piece.



WiseThin+

Optimized short arc process suitable for welding sheet metals and thicker plates in position welding, even in case of wider gaps and gap variations. Produces a spatterless arc with precise digital control.



FEATURES



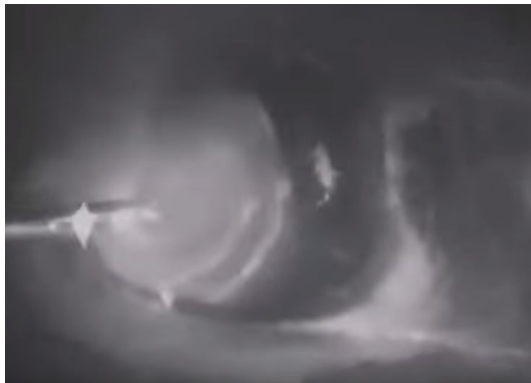
Fully upgradable

All three configuration options are fully upgradable and can be optimized for specific welding applications by choosing suitable software packages and applications.



Further flexibility with Wise solutions

The Wise solutions provide further flexibility for specific welding applications: for example, WiseRoot+ meets the special requirements of root welding, and exact arc voltage measurement provides easy and precise control of the device. Arc voltage measurement ensures that the set WPS parameters are always kept, regardless of the length of the welding cables.



High-speed aluminum welding

Aluminum pulse welding shot with a high-speed camera attached to the welding gun. Real time video shows how the welding arc is removed with pulsed laser light.



Matching high product quality with superior service

FastMig X is fully compatible with the world's most comprehensive welding management software, WeldEye. Among other things, it monitors compliance to the WPS, ensures that welders have appropriate qualifications, and collects quality documentation. The Kemppi worldwide service network also ensures immediate support and consultation.



Full control of welding parameters and system settings

With ARC Mobile Control you can control and monitor welding parameters and adjust systems settings and memory channels wirelessly via a smartphone or tablet during or after welding. ARC Mobile Control adapter is included with the WFX 200 AMC and WFX 300 AMC wire feeders and is optional with other setups.



ACCESSORIES



Cool X Cooling unit

Cool X cooling unit for liquid-cooled setups is the ultimate choice providing 1 kW of cooling power with 3 liters of cooling liquid.



Flexlite GX

Flexlite GX product series contains welding guns to be used in MIG/MAG welding processes. All Flexlite GX welding guns enjoy the Flexlite features for user comfort, welding efficiency and extended consumable parts life.



Earth return cable 5 m, 50 mm²



Earth return cable 5 m, 70 mm²



Cable for Stick (MMA) welding 5 m, 70 mm²



Cable for Stick (MMA) welding 5 m, 50 mm²



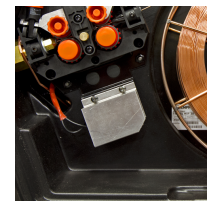
Remote control extension cable 10 m



ARC Mobile Control

For the first time in welding history, you can now control and monitor your welding machine wirelessly via a smartphone or tablet computer.

Download the app from Google Play.



KWF 200/300 cabinet heater

The cabinet heater maintains a temperature level inside the wire feed cabinet for conditions where the ambient temperature cycles up and down.

This unit is suitable for MXF 63, 65, 67, MXP 37 PIPE, and MXP 38.



GH 30 Gun holder

GH 30 Gun holder increases the usability around the workshop. The gun holder can be mounted on a welding machine, transport unit, or welding table.



DataGun

Kemppi DataGun is a programming device that is used together with Kemppi DataStore online shop to purchase and install welding software and upgrades to your Kemppi welding machines.



GXR10

On-torch remote control for Flexlite GX series 5 welding guns allows accurate and immediate welding current adjustment and memory channel selection.



Remote control R30

Suitable for use with Kemppi FastMig X and FastMig M with MXF wire feeder. Available in 5 m and 10 m.

Increase welding quality, work efficiency, comfort, and safety with appropriate, easy-to-use Kemppi remote controls.



Remote X 37 control panel



FASTMIG X 70-1.8-GH interconnection air-cooled cable, 1.8 m



FASTMIG X 70-5-GH interconnection air-cooled cable, 5 m



FASTMIG X 70-10-GH interconnection air-cooled cable, 10 m



FASTMIG X 70-20-GH interconnection air-cooled cable, 20 m



FASTMIG X 70-30-GH
interconnection air-cooled
cable, 30 m



FASTMIG X 70-1.8-WH
interconnection liquid-cooled
cable, 1.8 m



FASTMIG X 70-5-WH
interconnection liquid-cooled
cable, 5 m



FASTMIG X 70-10-WH
interconnection liquid-cooled
cable, 10 m



FASTMIG X 70-20-WH
interconnection liquid-cooled
cable, 20 m



FASTMIG X 70-30-WH
interconnection liquid-cooled
cable, 30 m

**Magnetic clamp (earth return
cable)**

600 A

**Magnetic clamp (voltage
sensing cable)**

200 A



MatchLog

MatchLog includes Minilog and MatchChannel activation in WFX feeders (Minilog can be used only with MXF feeders). MatchChannel allows changing of the memory channel during welding and Minilog enables to change welding power in the same memory channel.



KFH 1000

KFH 1000 is a movable option for hanging cables. This solution helps to create more versatile work spaces around the workshop.

This unit is suitable for MXF 63, 65, 67, MXP 37 PIPE, MXP 38, WFX 200, 200 P, 200 AMC, WFX 300, 300 P, 300 AMC and ArcFeed.



Boom WP 6000

Articulated boom "WP 6000" holds one wire feeder and creates a semicircular working area of 6 meters in radius. The boom folds in the middle and rotates 180 degrees, making it possible to reach the areas close to the wall, unlike with telescopic booms. The maximum load is 50 kg.

For suspension, a suitable Kemppi wire feeder hanger must be used: X8 Wire Feeder: X8702040000, WFX 300: 6185100, MFX 63: 6185285, MXF 65: W001694.



Digital Connectivity Module

An accessory device that enables integration with WeldEye cloud service. Collects welding data from the power source and transfers it wirelessly to the WeldEye mobile app via Bluetooth. Connection might require an adapter depending on the welding machine model.



TECHNICAL SPECIFICATIONS

POWER SOURCES

FastMig X 350 Power source

Product code	6103350
Connection voltage 3~ 50/60 Hz	400 V (-15...+20%)
Fuse (delayed)	35A
Minimum generator power	35 kVA
Output 80% ED	350 A
Output 100% ED	330 A
Open circuit voltage MMA	U ₀ = 70-98 V U _{av} = 50 V
Open circuit voltage MIG/MAG	U ₀ = 80 - 98 V
Operating temperature range	-20 ... +40 °C
External dimensions LxWxH	590 × 230 × 430 mm
Degree of protection	IP23S
Standards	IEC 60974-1, IEC 60974-5, IEC 60974-10

FastMig X 450 Power source

Product code	6103450
Connection voltage 3~ 50/60 Hz	400 V, (-15...+20%)
Fuse (delayed)	35A
Minimum generator power	35 kVA
Output 60% ED	450 A
Output 100% ED	350 A
Open circuit voltage MMA	U ₀ = 70-98 V U _{av} = 50 V
Open circuit voltage MIG/MAG	U ₀ = 80 - 98 V
Operating temperature range	-20 ... +40 °C
External dimensions LxWxH	590 × 230 × 430 mm
Degree of protection	IP23S
Standards	IEC 60974-1, IEC 60974-5, IEC 60974-10



FastMig X 350 (400 V) MV Power source

Product code	6103353
Connection voltage 3~ 50/60 Hz	220 V -10% ... 440 V +10%
Fuse (delayed)	35A
Minimum generator power	35 kVA
Output 80% ED	350 A
Output 100% ED	330 A
Open circuit voltage	U ₀ = 70-98 V U _{av} = 50 V
Operating temperature range	-20 ... +40 °C
External dimensions LxWxH	590 × 230 × 580 mm
Weight (no accessories)	49 kg U ₀ = 80 - 98 V
Degree of protection	IP23S
Standards	IEC 60974-1, IEC 60974-5, IEC 60974-10

WIRE FEEDERS

WFX 200 Wire feeder

Product code	6103520
Output 60% ED	520 A
Output 100% ED	440 A
Wire feed mechanism	4 roll
Gun connection	Euro
Filler wire sizes (Ss)	0.6 - 1.6 mm
Filler wire sizes (Al)	0.8 - 2.4 mm
Filler wire sizes (Fe)	0.6 - 1.6 mm
Filler wire sizes (Cored wire)	0.8 - 2.0 mm
Wire feed speed	1 - 25 m/min
Software	WiseFusion WorkPack (21pcs)
Operating temperature range	-20 ... +40 °C
External dimensions LxWxH	510 × 200 × 310 mm
Degree of protection	IP23S
Standards	IEC 60974-5
Wire spool weight, max.	5 kg
Weight (empty)	9.4 kg
Wire spool diameter, max.	200 mm



WFX 300 Wire feeder

Product code	6103530
Output 60% ED	520 A
Output 100% ED	440 A
Wire feed mechanism	DuraTorque
Gun connection	Euro
Filler wire sizes (Ss)	0.6 - 1.6 mm
Filler wire sizes (Al)	0.8 - 2.4 mm
Filler wire sizes (Fe)	0.6 - 1.6 mm
Filler wire sizes (Cored wire)	0.8 - 2.0 mm
Wire feed speed	1 - 25 m/min
Software	WiseFusion WorkPack (21pcs)
Operating temperature range	-20 ... +40 °C
External dimensions LxWxH	625 × 243 × 476 mm
Degree of protection	IP23S
Standards	IEC 60974-5
Wire spool weight, max.	20 kg
Weight (empty)	12.5 kg
Wire spool diameter, max.	300 mm

WFX 200 P Fe Wire feeder

Product code	6103521
Output 60% ED	520 A
Output 100% ED	440 A
Wire feed mechanism	4 roll
Gun connection	Euro
Filler wire sizes (Ss)	0.6 - 1.6 mm
Filler wire sizes (Al)	0.8 - 2.4 mm
Filler wire sizes (Fe)	0.6 - 1.6 mm
Filler wire sizes (Cored wire)	0.8 - 2.0 mm
Wire feed speed	1 - 25 m/min
Software	WiseFusion WiseRoot+ MatchLog Pipe Steel pack Fe (25pcs)
Operating temperature range	-20 ... +40 °C
External dimensions LxWxH	510 × 200 × 310 mm
Degree of protection	IP23S
Standards	IEC 60974-5
Wire spool weight, max.	5 kg
Weight (empty)	9.4 kg
Wire spool diameter, max.	200 mm



WFX 200 P Ss Wire feeder

Product code	6103522
Output 60% ED	520 A
Output 100% ED	440 A
Wire feed mechanism	4-roll
Gun connection	Euro
Filler wire sizes (Ss)	0.6 - 1.6 mm
Filler wire sizes (Al)	0.9 - 2.4 mm
Filler wire sizes (Fe)	0.6 - 1.6 mm
Filler wire sizes (Cored wire)	0.8 - 2.0 mm
Wire feed speed	1 - 25 m/min
Software	WiseFusion WiseRoot+ MatchLog Pipe Stainless pack Ss (17pcs)
Operating temperature range	-20 ... +40 °C
Degree of protection	IP23S
Wire spool weight, max.	5 kg
Weight (empty)	9.4 kg
Wire spool diameter, max.	200 mm
External dimensions	510 × 200 × 310 mm

WFX 300 P Fe Wire feeder

Product code	6103531
Output 60% ED	520 A
Output 100% ED	440 A
Wire feed mechanism	GT04
Gun connection	Euro
Filler wire sizes (Ss)	0.6 - 2.0 mm
Filler wire sizes (Al)	0.8 - 2.4 mm
Filler wire sizes (Fe)	0.6 - 2.0 mm
Filler wire sizes (Cored wire)	0.8 - 2.4 mm
Wire feed speed	0.5 - 25 m/min
Software	WiseFusion WiseRoot+ MatchLog Pipe Steel pack Fe (25pcs)
Operating temperature range	-20 ... +40 °C
External dimensions LxWxH	590 × 240 × 445 mm
Degree of protection	IP23S
Standards	IEC 60974-5
Wire spool weight, max.	20 kg
Weight (empty)	13.1 kg
Wire spool diameter, max.	300 mm



WFX 300 P Ss Wire feeder

Product code	6103532
Output 60% ED	520 A
Output 100% ED	440 A
Wire feed mechanism	GT04
Gun connection	Euro
Filler wire sizes (Ss)	0.6 - 2.0 mm
Filler wire sizes (Al)	0.8 - 2.4 mm
Filler wire sizes (Fe)	0.6 - 2.0 mm
Filler wire sizes (Cored wire)	0.8 - 2.4 mm
Wire feed speed	1 - 25 m/min
Software	WiseFusion WiseRoot+ MatchLog Pipe Stainless pack Ss (17pcs)
Operating temperature range	-20 ... +40 °C
Degree of protection	IP23S
Wire spool weight, max.	20 kg 20 kg
Weight (empty)	13.1 kg
Wire spool diameter, max.	300 mm 300 mm
External dimensions	590 × 240 × 445 mm



WFX 200 AMC Wire feeder

Product code	6103523
Output 60% ED	520 A
Output 100% ED	440 A
Wire feed mechanism	4 roll
Gun connection	Euro
Filler wire sizes (Ss)	0.6 - 1.6 mm
Filler wire sizes (Al)	0.8 - 2.4 mm
Filler wire sizes (Fe)	0.6 - 1.6 mm
Filler wire sizes (Cored wire)	0.8 - 2.0 mm
Wire feed speed	1 - 25 m/min
Software	WiseFusion WisePenetration WiseThin+ MatchLog Steel Pack (14 pcs) Steel Pack for Wise thin+ (14 pcs) Stainless Pack (12 pcs) Aluminum Pack (12 pcs)
Operating temperature range	-20 ... +40 °C
External dimensions LxWxH	510 × 200 × 310 mm
Degree of protection	IP23S
Standards	IEC 60974-5
Wire spool weight, max.	5 kg
Weight (empty)	9.4 kg
Wire spool diameter, max.	200 mm



WFX 300 AMC Wire feeder

Product code	6103533
Output	440 A
Output 60% ED	520 A
Wire feed mechanism	DuraTorque
Gun connection	Euro
Filler wire sizes (Ss)	0.6 - 1.6 mm
Filler wire sizes (Al)	0.8 - 2.4 mm
Filler wire sizes (Fe)	0.6 - 1.6 mm
Filler wire sizes (Cored wire)	0.8 - 2.0 mm
Wire feed speed	1 - 25 m/min
Software	WiseFusion WisePenetration WiseThin+ MatchLog Steel Pack (12 pcs) Steel Pack for Wise thin+ (8 pcs) Stainless Pack (12 pcs) Aluminum Pack (12 pcs)
Operating temperature range	-20 ... +40 °C
External dimensions LxWxH	625 × 243 × 476 mm
Degree of protection	IP23S
Standards	IEC 60974-5
Wire spool weight, max.	20 kg
Weight (empty)	12.5 kg
Wire spool diameter, max.	300 mm

SOFTWARE

WiseFusion

Product code	X5500001 (X5 FastMig) X8500000 (X8 MIG Welder) MSM40000 (MasterMig)
--------------	---

WiseRoot+

Product code	X8500003 (X8 MIG Welder)
--------------	--------------------------

WisePenetration

Product code	9991000 (FastMig M, FastMigX) A7500001 (A7 MIG Welder)
--------------	---

WiseThin+

Product code	X5500004 (X5 FastMig) X8500004 (X8 MIG Welder)
--------------	---



ACCESSORIES

Cool X Cooling unit

Product code	6068200
	Cooling liquid - 10 liter can - SP9810765
Operating voltage (safety voltage)	400 V -15 ...+20 %
Maximum pressure	0.4 Mpa
External dimensions LxWxH	570 x 230 x 280 mm
Weight (no accessories)	11 kg
Degree of protection	IP23S
Tank volume	~3 L
EMC class	A
Cooling power	1 kW
Storage temperature range	-40 ...+60 °C
Operating temperature	-20 ...+40 °C

Earth return cable 5 m, 50 mm²

Product code	6184511
--------------	---------

Earth return cable 5 m, 70 mm²

Product code	6184711
--------------	---------

Cable for Stick (MMA) welding 5 m, 70 mm²

Product code	6184701
--------------	---------

Cable for Stick (MMA) welding 5 m, 50 mm²

Product code	6184501
--------------	---------

Remote control extension cable 10 m

Product code	6185481
--------------	---------

KWF 200/300 cabinet heater

Product code	6185288
--------------	---------

GH 30 Gun holder

Product code	6256030
--------------	---------

GXR10

Description	Gun Remote
Product code	GXR10



Remote control R30

Product code	R30, 5 m - 6185420 R30, 10 m - 618542001
--------------	---

Remote X 37 control panel

Product code	6103800
--------------	---------

FASTMIG X 70-1.8-GH interconnection air-cooled cable, 1.8 m

Product code	6260468
--------------	---------

FASTMIG X 70-5-GH interconnection air-cooled cable, 5 m

Product code	6260469
--------------	---------

FASTMIG X 70-10-GH interconnection air-cooled cable, 10 m

Product code	6260470
--------------	---------

FASTMIG X 70-20-GH interconnection air-cooled cable, 20 m

Product code	6260471
--------------	---------

FASTMIG X 70-30-GH interconnection air-cooled cable, 30 m

Product code	6260472
--------------	---------

FASTMIG X 70-1.8-WH interconnection liquid-cooled cable, 1.8 m

Product code	6260473
--------------	---------

FASTMIG X 70-5-WH interconnection liquid-cooled cable, 5 m

Product code	6260474
--------------	---------

FASTMIG X 70-10-WH interconnection liquid-cooled cable, 10 m

Product code	6260475
--------------	---------

FASTMIG X 70-20-WH interconnection liquid-cooled cable, 20 m

Product code	6260476
--------------	---------



FASTMIG X 70-30-WH interconnection liquid-cooled cable, 30 m

Product code	6260477
--------------	---------

Magnetic clamp (earth return cable)

Product code	9871570
--------------	---------

Magnetic clamp (voltage sensing cable)

Product code	9871580
--------------	---------

MatchLog

Product code	9991017
--------------	---------

KFH 1000

Product code	6185100
--------------	---------

Boom WP 6000

Product code	6264026
--------------	---------

Digital Connectivity Module

Product code	6265051
--------------	---------

WWW.KEMPPI.COM

Kemppi is the design leader of the arc welding industry. We are committed to boosting the quality and productivity of welding by continuous development of the welding arc. Kemppi supplies advanced products, digital solutions and services for professionals from industrial welding companies to single contractors. The usability and reliability of our products is our guiding principle. We operate with a highly skilled partner network covering over 70 countries to make its expertise locally available. Headquartered in Lahti, Finland, Kemppi employs close to 800 professionals in 17 countries and has a revenue of 178 MEUR.

