

A GLOBAL PROVIDER OF ENHANCED THERMAL CUTTING SOLUTIONS



EX-TRAFIRE[®]

PLASMA CUTTING SYSTEMS CATALOG



THERMACUT[®] - THE CUTTING COMPANY[®]

WWW.THERMACUT.COM
SALES@THERMACUT.CZ

Rev 1.12_EN

FROM THE GARAGE TO THE SHIPYARD

"A successful product begins with a simple idea". The idea was to create a plasma cutting power supply. Criteria were set precisely. It has to be powerful, versatile, easy to operate, durable and portable.

AND WE CREATED IT.
IT'S CALLED
THE **EX-TRAFIRE**®

Last update of this page: 09/06/2021. See Revision history for details.

EX-TRAFIRE® PLASMA SYSTEMS

TABLE OF CONTENTS

OVERVIEW

EX-TRAFIRE® 45HD

System **SPECIFICATION** 6-11
FHT-EX®45TT **PLASMA TORCH** 12-17

EX-TRAFIRE® SD

EX-TRAFIRE® **SD LINE** 20-21

EX-TRAFIRE® 30H

System **SPECIFICATION** 22-27
FHT-EX®30H **PLASMA TORCH** 28-31

EX-TRAFIRE® 40SD

System **SPECIFICATION** 32-37
FHT-EX®40H/M **PLASMA TORCH** 38-43

EX-TRAFIRE® 45SD

System **SPECIFICATION** 44-49
FHT-EX®45TT H/M **PLASMA TORCH** 50-55

EX-TRAFIRE® 55SD

System **SPECIFICATION** 56-61

EX-TRAFIRE® 75SD

System **SPECIFICATION** 62-67

EX-TRAFIRE® 100SD

System **SPECIFICATION** 68-73

FHT-EX® 105RTX PLASMA TORCH

Hand Torch **SPECIFICATION** 76-79
Machine Torch **SPECIFICATION** 80-83

ACCESSORIES

EX-TRAFIRE® **ACCESSORIES** 84

REVISION HISTORY

85

Last update of this page: 09/06/2021. See Revision history for details.



EX-TRAFIRE[®] HD

INDUSTRIAL CUTTING. HEAVY-DUTY PERFORMANCE.



EX-TRAFIRE[®] 45HD

EX-TRAFIRE[®]45HD

INDUSTRIAL CUTTING. HEAVY-DUTY PERFORMANCE.



SOLUTIONS / INDUSTRIES



Training and education



General fabrication



Craft, hobby and non-industrial



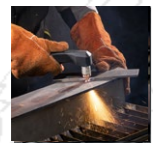
Structural

Last update of this page: 29/10/2021. See Revision history for details.

EX-TRAFIRE® 45HD



IMPRESSIVE PERFORMANCE



- + Extremely high cutting speed
- + Maximum cutting quality
- + Also ideal for automated processes

AUTOMATIC SETTINGS



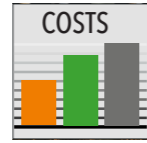
- + Cutting gas media, electricity and pilot current
- + Compensation for pressure drops
- + Fewer operating errors, better cutting quality

READY FOR INDUSTRY 4.0



- + CAN Bus interface (optional)
- + RS 485 interface (optional)
- + Easy monitoring
- + Expandable and updatable to remain extremely future-proof

OPTIMAL COST-EFFECTIVENESS



- + Low investment costs
- + 20 % longer consumable lifetime
- + Low operating costs
- + Increased productivity

Last update of this page: 29/10/2021. See Revision history for details.

EX-TRAFIRE® 45HD

SPECIFICATIONS

	SINGLE PHASE		THREE PHASE
Cutting current	10-25 A @ 120 VAC	10-45 A @ 230 VAC	10-45 A
Modes	cutting / grid cutting / gouging / marking		
Duty cycle	40 % @ 25 A, 100 % @ 16 A	50 % @ 45 A, 100 % @ 32 A	80 % @ 45 A, 100 % @ 40 A
Rated output voltage	145 VDC		
Severance cutting capacity	25 mm +*		
Piercing cutting capacity	10 mm*		
Recommended cutting capacity	12 mm*		
Plasma gas	compr. air / nitrogen / argon (marking)		
Air flow [lpm/bar]	90/4.5		
CNC interface / CAN BUS interface	optional / optional		
Preadjusted voltage divider ratio**	50:1		
Input voltage	120 VAC ± 15 %	230 VAC ± 15 %	3x400 VAC ± 15 % (CE)
Frequency	50/60 Hz		
Dimension (l×h×w) [mm]	469×228×177		
Weight	12.7		
Certification depending on region	CE / C-TICK / CCC		
Maximum input pressure [bar/psi]	10/145		
Protection level	IP23S		
Insulation class	F		
Type of hand torch	FHT-EX®45TTH		
Type of machine torch	FHT-EX®45TTM		

* Values for low alloy steel, E. G. MS S235JR



4 DIFFERENT OPERATION MODES

The plasma cutting systems in the EX-TRAFIRE®HD range are the absolute specialists in meeting tough demands in continuous operation. The mobile EX-TRAFIRE® 45HD plasma cutting system is the ideal solution for anyone looking for a robust, extremely high-performance and cost-effective starter model.

Last update of this page: 10.05.2022. See Revision history for details.

EX-TRAFIRE® 45HD

ORDERING INFORMATION

Description	Length	Part No.
MANUAL PLASMA CUTTING SYSTEMS		
EX-TRAFIRE®45HD/CE/3x400 V Hand System (STD-equipped**)/FHT-EX®45TTH 5m/ H Starter Kit	5 m	EX-2-010-031
EX-TRAFIRE®45HD/CE/3x400 V Hand System (STD-equipped**)/FHT-EX®45TTH 8m/ H Starter Kit	8 m	EX-2-010-032
EX-TRAFIRE®45HD/CE/3x400 V Hand System (STD-equipped**)/FHT-EX®45TTH 15m/ H Starter Kit	15 m	EX-2-010-033
EX-TRAFIRE®45HD/CE/1x110/230 V Hand System (STD-equipped**)/FHT-EX®45TTH 5m/ H Starter Kit	5 m	EX-2-010-041
EX-TRAFIRE®45HD/CE/1x110/230 V Hand System (STD-equipped**)/FHT-EX®45TTH 8m/ H Starter Kit	8 m	EX-2-010-042
EX-TRAFIRE®45HD/CE/1x110/230 V Hand System (STD-equipped**)/FHT-EX®45TTH 15m/ H Starter Kit	15 m	EX-2-010-043
MECHANIZED PLASMA CUTTING SYSTEMS		
EX-TRAFIRE®45HD/CE/3x400 V Machine System (Fully-equipped*)/FHT-EX®45TTM 5m/M Starter Kit	5 m	EX-2-011-031
EX-TRAFIRE®45HD/CE/3x400 V Machine System (Fully-equipped*)/FHT-EX®45TTM 8m/M Starter Kit	8 m	EX-2-011-032
EX-TRAFIRE®45HD/CE/3x400 V Machine System (Fully-equipped*)/FHT-EX®45TTM 15m/M Starter Kit	15 m	EX-2-011-033
EX-TRAFIRE®45HD/CE/1x110/230 V Machine System (Fully-equipped*)/FHT-EX®45TTM 5m/M Starter Kit	5 m	EX-2-011-041
EX-TRAFIRE®45HD/CE/1x110/230 V Machine System (Fully-equipped*)/FHT-EX®45TTM 8m/M Starter Kit	8 m	EX-2-011-042
EX-TRAFIRE®45HD/CE/1x110/230 V Machine System (Fully-equipped*)/FHT-EX®45TTM 15m/M Starter Kit	15 m	EX-2-011-043
EX-TRAFIRE®45HD/CE/1x110/230 V Machine System (STD-equipped**)/FHT-EX®45TTM 5m/M Starter Kit	5 m	EX-2-013-001
EX-TRAFIRE®45HD/CE/1x110/230 V Machine System (STD-equipped**)/FHT-EX®45TTM 8m/M Starter Kit	8 m	EX-2-013-002
EX-TRAFIRE®45HD/CE/1x110/230 V Machine System (STD-equipped**)/FHT-EX®45TTM 15m/M Starter Kit	15 m	EX-2-013-003
EX-TRAFIRE®45HD/CE/3x400 V Machine System (STD-equipped**)/FHT-EX®45TTM 5m/M Starter Kit	5 m	EX-2-013-004
EX-TRAFIRE®45HD/CE/3x400 V Machine System (STD-equipped**)/FHT-EX®45TTM 8m/M Starter Kit	8 m	EX-2-013-005
EX-TRAFIRE®45HD/CE/3x400 V Machine System (STD-equipped**)/FHT-EX®45TTM 15m/M Starter Kit	15 m	EX-2-013-006

PLASMA CUTTING UNITS

EX-TRAFIRE® 45HD/CE/1x110/230 V power supply unit (Fully-equipped*)	EX-2-001-001
EX-TRAFIRE® 45HD/CE/3x400 V power supply unit (Fully-equipped*)	EX-2-001-002
EX-TRAFIRE® 45HD/CE/1x110/230 V power supply unit (STD-equipped**)	EX-2-003-001
EX-TRAFIRE® 45HD/CE/1x110/230 V power supply unit (CNC ready)	EX-2-002-001
EX-TRAFIRE® 45HD/CE/3x400 V power supply unit (STD-equipped**)	EX-2-003-003
EX-TRAFIRE® 45HD/CE/3x400 V power supply unit (CNC ready)	EX-2-002-003

* Fully-equipped=CNC interface & Serial interfaceport (CAN bus)
 ** STD-equipped=CNC interface

AVAILABLE BULK PACKS

Description	Pcs	Part No.
Bulk Pack-Electrode - 25 pcs	1	EX-2-434-201
Bulk Pack-Nozzle - 25 pcs	1	EX-2-435-201
Bulk Pack - Hand (Contact) Shield - 18 pcs	1	EX-2-436-201
Bulk Pack - Machine Shield - 18 pcs	1	EX-2-437-201

ACCESSORIES

Description	Pcs	Part No.
DN 7.2 ES Quick Connect Plug with female thread G 1/4"	1	EX-0-802-000
DN 7.2 ES Quick Connect Plug with male thread G 1/4"	1	EX-0-802-001
DN 7.2 ES Quick Connect Coupling with male thread G 1/4"	1	EX-0-802-002
Grease 25 ml	1	EX-0-805-001
Filter-EX Compressed Air Filter	1	EX-0-804-001
Filter-EX Air Filter Cartridge	8	EX-0-804-002

Last update of this page: 10/05/2022. See Revision history for details.

EX-TRAFIRE® 45HD



FRONT VIEW



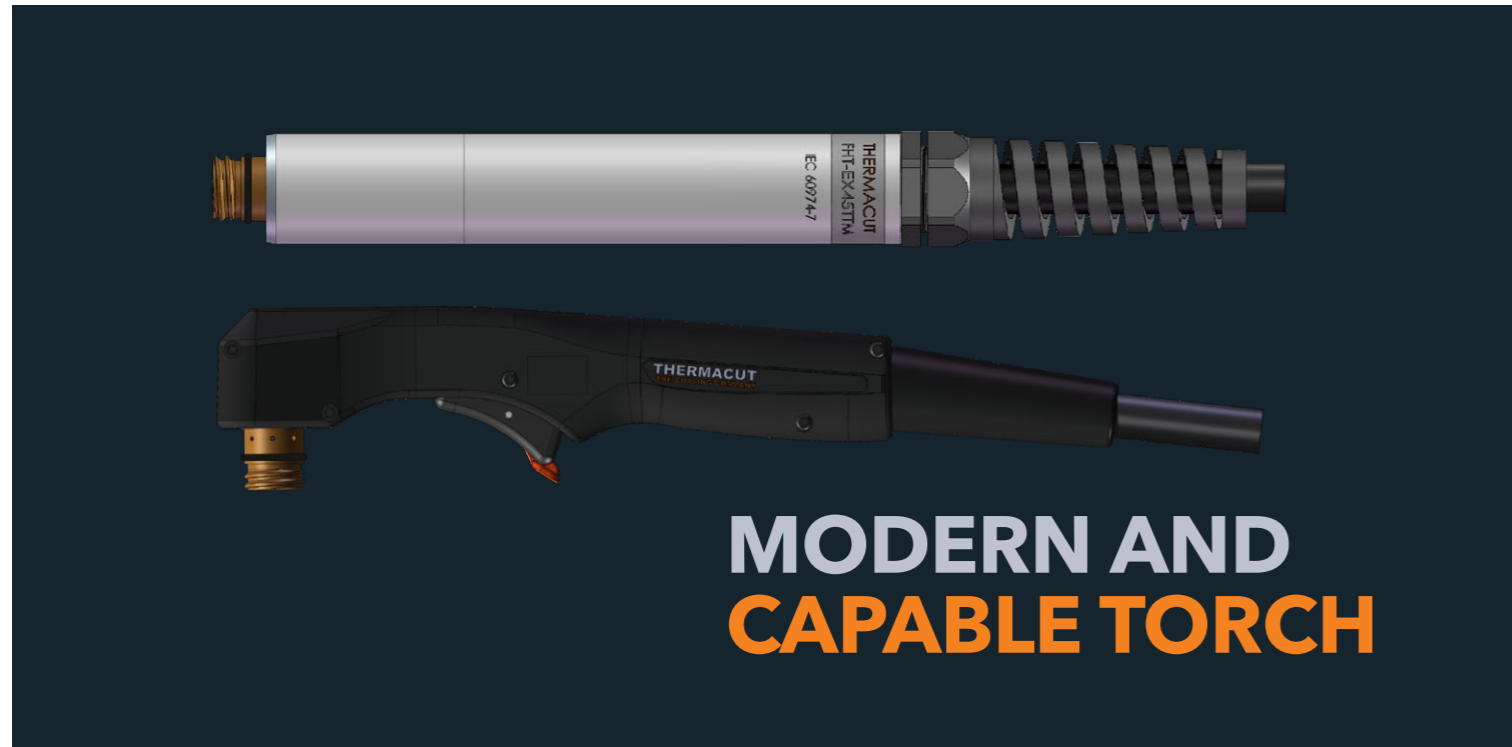
BACK VIEW



SIDE VIEW

Last update of this page: 29/10/2021. See Revision history for details.

FHT-EX®45TT



FHT-EX®45TTH

HAND TORCH ASSEMBLY



The high-performant FHT-EX®45TT H/M hand and machine torches are ideal for meeting tough demands in continuous operation. These torches are optimally designed for use with EX-TRAFIRE®45HD power supplies and are suitable for cutting, gouging, grid-cutting and marking. They can cut plate thickness of up to 25+ mm and more precisely and quickly.

Thanks to the Thermacut® Torch Connection System (TCS), changing the torch is a quick and easy process. The powerful torches are the result of decades of experience in the field of plasma cutting. They feature an extremely robust and durable design in which all consumables can be replaced quickly and easily.

BENEFITS

- High-performant torches for mechanised applications and handheld use
- Ergonomic handheld torches for safe and reliable holding and guiding in all positions
- Compact and flexible for handheld applications, even in the case of tight radii or gouging of fillet welds
- 100 % duty cycle at 45 A, ideal for continuous use
- Ideal for plate thicknesses of up to 25 mm and more with high power reserves
- Consumables with an extended lifetime
- Quick and tool-free replacement of consumables
- Piercing 10+ mm
- Perfectly designed for use with EX-TRAFIRE®45HD power supplies

Last update of this page: 29/10/2021. See Revision history for details.

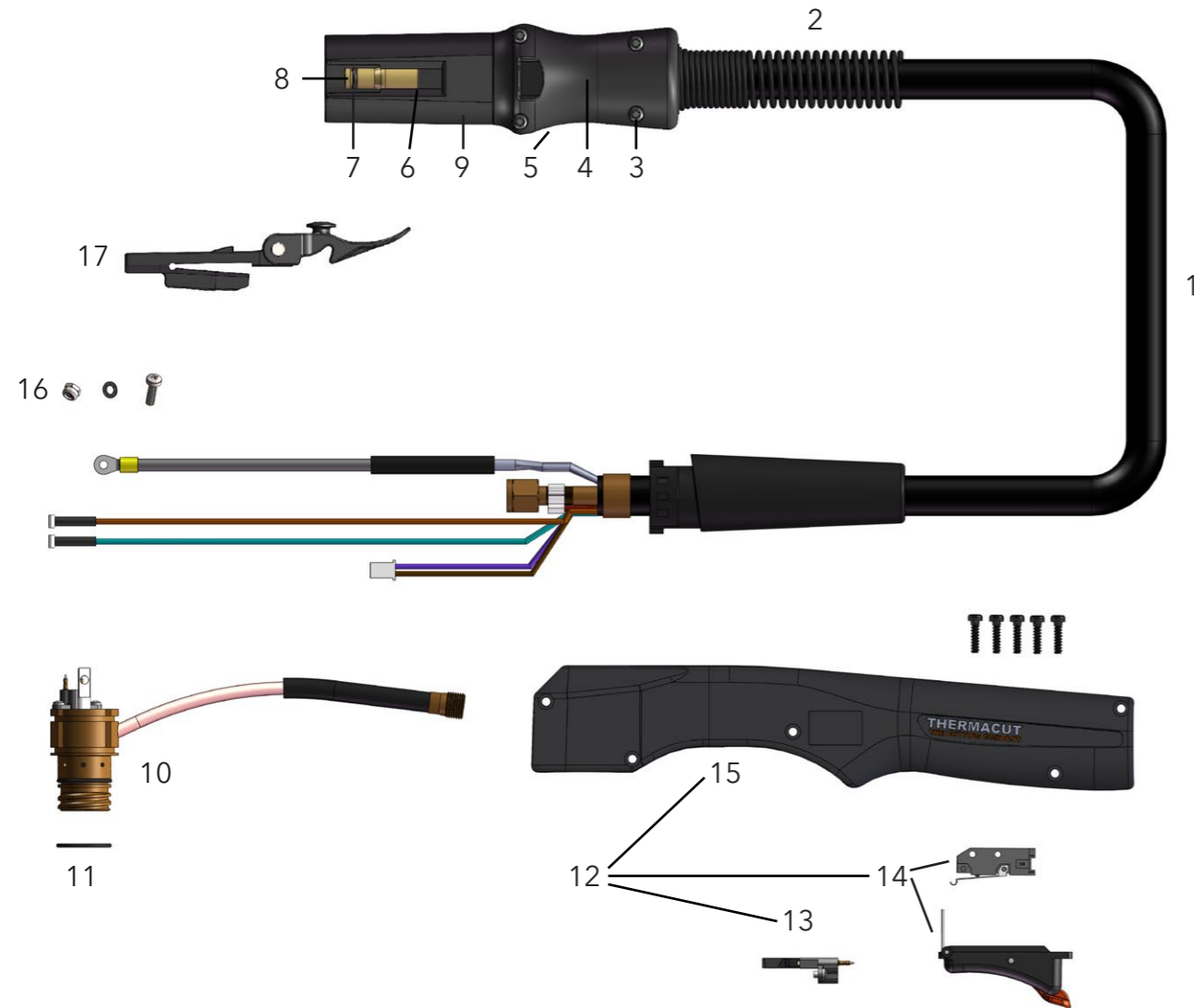
Item	Part No.	Description	Pcs
1.	EX-2-133-001	FHT-EX45®TTH DEMO Hand Torch Assembly w/consumables/TCS13	1
	EX-2-101-001	FHT-EX45®TTH Hand Torch Assembly w/o consumables w/5m Lead/TCS13	1
	EX-2-103-001	FHT-EX45®TTH Hand Torch Assembly w/o consumables w/8m Lead/TCS13	1
	EX-2-106-001	FHT-EX45®TTH Hand Torch Assembly w/o consumables w/15m Lead/TCS13	1
2.	EX-0-321-003	Latch with Key Assembly	1

⊕ LATCH WITH KEY IS NOT CONTENT OF TORCHES ABOVE. IF YOU NEED IT, YOU HAVE TO ORDER SEPARATELY.

Last update of this page: 29/10/2021. See Revision history for details.

FHT-EX®45TTH

HAND TORCH COMPONENTS



Item	Part No.	Description	Pcs	Item	Part No.	Description	Pcs
1.	EX-2-331-001	FHT-EX®45TTH Hand Torch Lead Replacement Kit 5m Lead/TCS13	1	9.	EX-0-323-001	TCS13 Plug Body	1
1.	EX-2-333-001	FHT-EX®45TTH Hand Torch Lead Replacement Kit 8m Lead/TCS13	1	10.	EX-2-302-001	Hand Torch Body FHT-EX®45TTH	1
1.	EX-2-336-001	FHT-EX®45TTH Hand Torch Lead Replacement Kit 15m Lead/TCS13	1	11.	EX-5-431-050	O-Ring (fitted on the torch body)	2
2.	EX-5-318-001	TCS Plug Spring Stain Relief	1	12.	EX-2-314-001	FHT-EX®45TTH Hand Torch Handle Replacement Kit	1
3.	EX-0-325-015	TCS Clam Shell Screw	1	13.	EX-2-305-001	Cap-sensor Replacement Kit with Screws/ Hand Torch	1
4.	EX-0-325-002	TCS Clam Shell Upper	1	14.	EX-2-313-001	Safety Trigger with start switch	1
5.	EX-0-325-001	TCS Clam Shell Lower	1	15.	EX-2-308-001	Hand Torch Handle with Screws	1
6.	EX-0-325-010	Retaining Ring (Outer circlip ring)	1	16.	EX-5-372-010	Cathode mounting kit	1
7.	EX-0-325-009	O-Ring (fitted in the TCS plug)	1	17.	EX-0-321-003	Latch w/Key Assembly	1
8.	EX-0-325-005	Male Crimp Pin for TCS Plug	1				

Last update of this page: 29/10/2021. See Revision history for details.

FHT-EX®45TTM

MACHINE TORCH ASSEMBLY



Item	Part No.	Description	Pcs
1.	EX-2-233-001	FHT-EX®45TTM DEMO Machine Torch Assembly w/consumables/TCS13	1
	EX-2-202-001	FHT-EX®45TTM Machine Torch Assembly w/o consumables w/5 m Lead/TCS13	1
	EX-2-204-001	FHT-EX®45TTM Machine Torch Assembly w/o consumables w/8 m Lead/TCS13	1
	EX-2-207-001	FHT-EX®45TTM Machine Torch Assembly w/o consumables w/15 m Lead/TCS13	1
2.	EX-0-321-003	Latch with Key Assembly	1

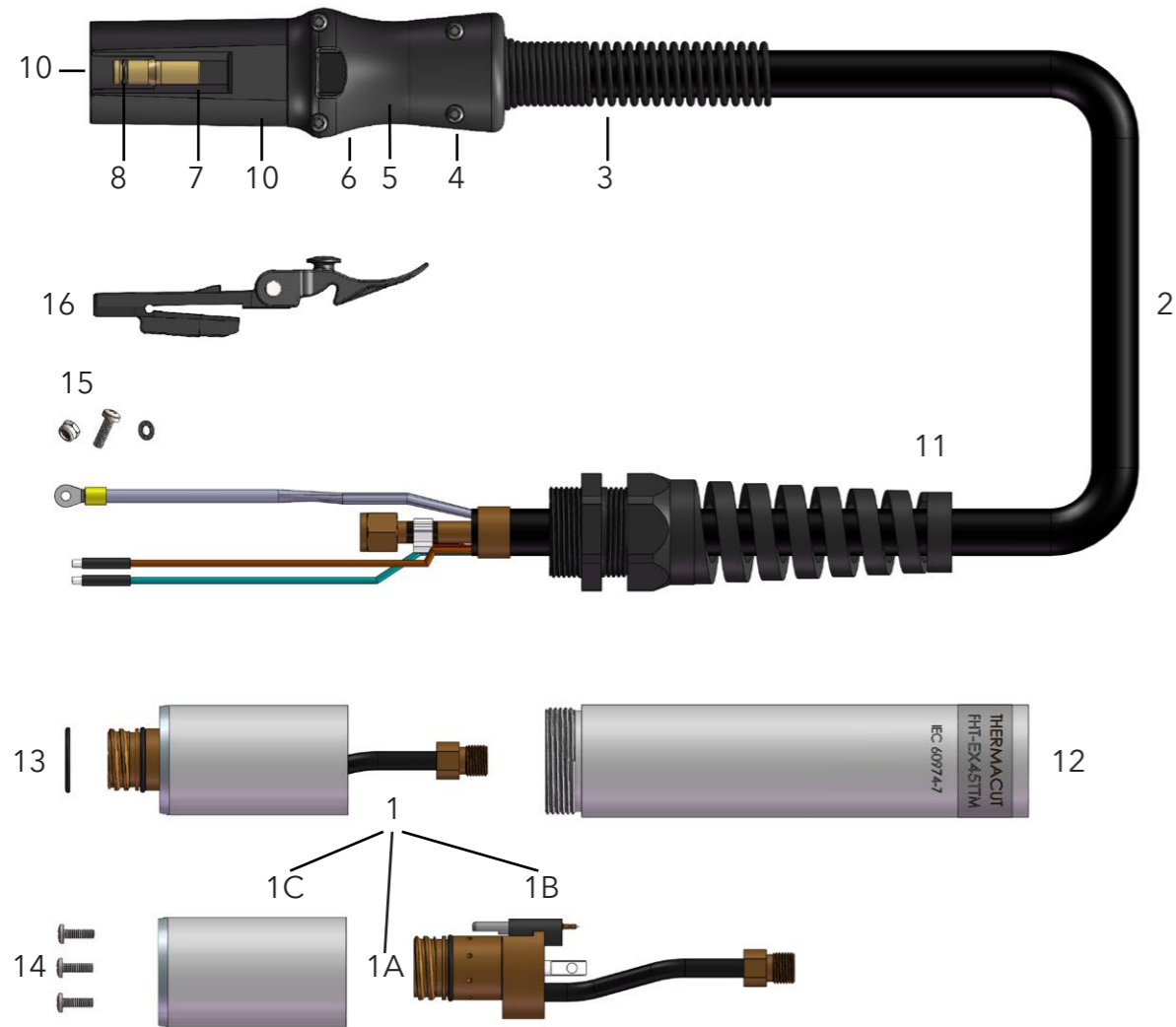
LATCH WITH KEY IS NOT CONTENT OF TORCHES ABOVE. IF YOU NEED IT, YOU HAVE TO ORDER SEPARATELY.

Last update of this page: 29/10/2021. See Revision history for details.

FHT-EX® 45TTM

CONSUMABLES

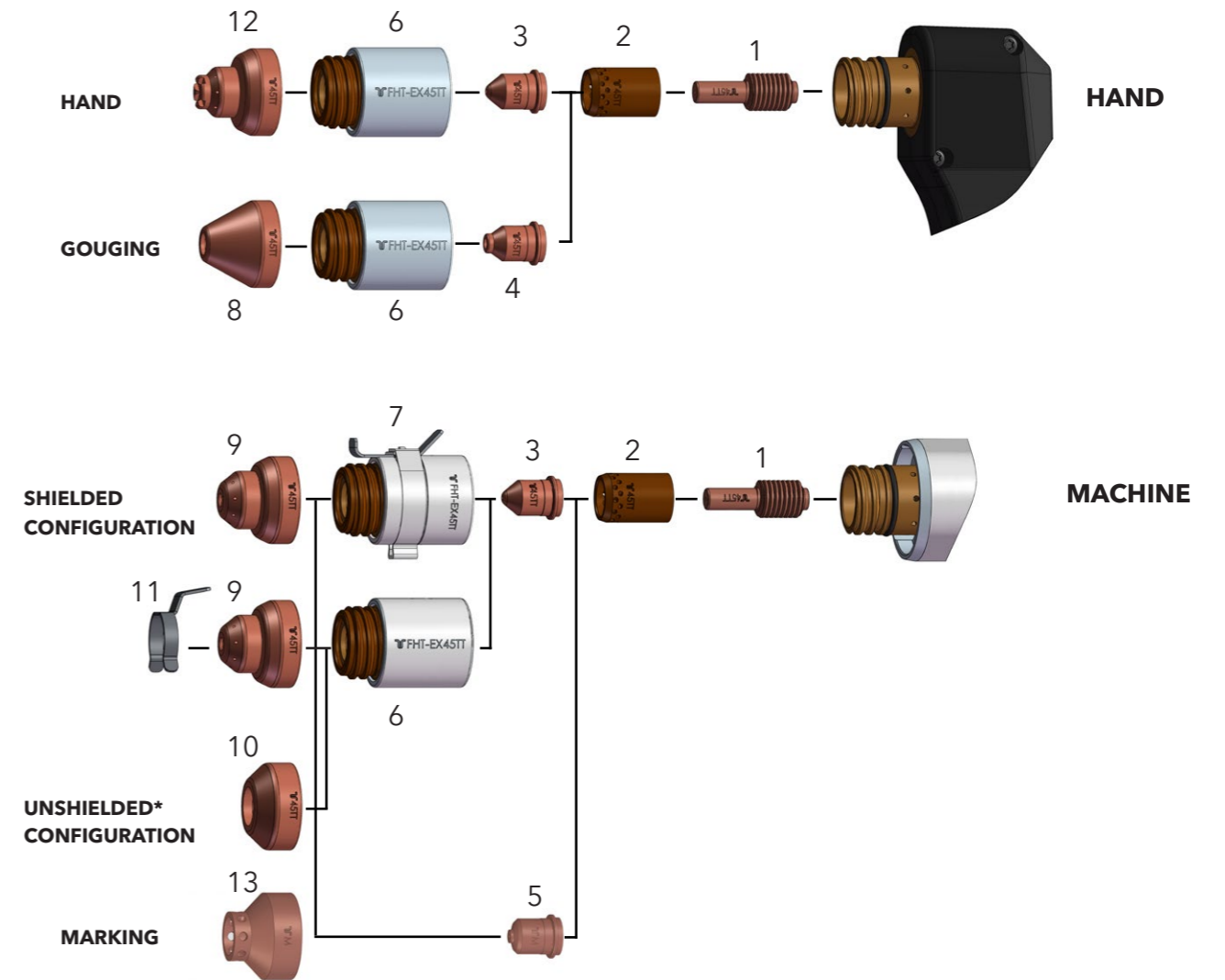
MACHINE TORCH COMPONENTS



Item	Part No.	Description	Pcs	Item	Part No.	Description	Pcs
1.	EX-2-301-001	Machine Torch Body Assembly FHT-EX®45TTM	1	7.	EX-0-325-010	Retaining Ring (Outer circlip ring)	1
1a.	EX-2-301-002	Machine Torch Body FHT-EX®45TTM	1	8.	EX-0-325-009	O-Ring (fitted in the TCS plug)	1
1b.	EX-5-304-001	Cap Sensor Replacement Kit with Screws/Machine Torch	1	9.	EX-0-325-005	Male Crimp Pin for TCS Plug	1
1c.	EX-5-306-002	Torch Mounting Sleeve (incl. 3 screws)	1	10.	EX-0-323-001	TCS13 Plug Body	1
2.	EX-2-352-001	FHT-EX®45TTM Machine Torch Lead Replacement Kit 5m Lead/TCS13	1	11.	EX-5-317-021	Machine Torch Strain Relief	1
	EX-2-354-001	FHT-EX®45TTM Machine Torch Lead Replacement 8m Lead/TCS13	1	12.	EX-2-306-001	FHT-EX®45TTM Standard Mounting Tube w/o Rack	1
	EX-2-357-001	FHT-EX®45TTM Machine Torch Lead Replacement 15m Lead/TCS13	1	13.	EX-5-431-050	O-Ring (fitted on the torch body)	2
3.	EX-5-318-001	TCS Plug Spring Strain Relief	1	14.	EX-5-372-005	Torch Mounting Screws Kit (incl. 3 screws)	1
4.	EX-0-325-015	TCS Clam Shell Screw Kit (incl. 4 screws)	1	15.	EX-5-372-010	Cathode Mounting Kit	1
5.	EX-0-325-002	TCS Clam Shell Upper	1	16.	EX-0-321-003	Latch w/Key Assembly	1
6.	EX-0-325-001	TCS Clam Shell Lower	1				

Last update of this page: 29/10/2021. See Revision history for details.

HAND / MACHINE TORCH CONSUMABLES



Item	Part No.	Description	Pcs	Item	Part No.	Description	Pcs
1.	EX-2-401-201	Electrode	5	8.	EX-2-419-202	Gouging Shield	1
2.	EX-2-404-201	Swirl ring	1	9.	EX-2-421-201	Machine Shield	1
3.	EX-2-409-201	Nozzle	5	10.	EX-2-423-211	Deflector	1
4.	EX-2-409-202	Gouging nozzle	5	11.	EX-2-428-011	IHS Ohmic Clip	1
5.	EX-2-445-001	Marking Nozzle	1	12.	EX-2-419-201	Hand (contact) Shield	1
6.	EX-2-415-201	Retaining Cap	1	13.	EX-2-445-002	Marking Shield	1
7.	EX-2-415-202	Retaining Cap w/IHS Tab	1				

* IN COUNTRIES FOLLOWING CE STANDARDS, UNSHIELDED CONSUMABLE CONFIGURATION MAY ONLY BE USED IN MECHANIZED TORCH APPLICATIONS.

Last update of this page: 18/01/2022. See Revision history for details.

EX-TRAFIRE[®] SD

THINK FRESH. CUT ORANGE.



EX-TRAFIRE[®]

EX-TRAFIRE® SD LINE OVERVIEW

	EX-TRAFIRE®30H	EX-TRAFIRE®40SD		EX-TRAFIRE®45SD		EX-TRAFIRE®55SD	EX-TRAFIRE®75SD	EX-TRAFIRE®100SD
Cutting current [I2]	10 - 30 A	10 - 40 A	10 - 30 A	20-45 A (20-25 A)	20-45 A	30 - 55 A	30 - 75 A	30 - 100 A
Input voltage [I2]	CE 220-240 VAC ± 15 %	CE 1x 230 VAC ± 15 %	1x120 VAC ± 15 %	1x230 VAC ± 15 % (1x120 VAC)	3x400 VAC ± 15 %	CE 3x400 VAC ± 15 %	CE 3x400 VAC ± 15 %	3x400 VAC ± 15 %
Duty cycle	35 % @ 30 A-92 V 60 % @ 25 A-90 V 100 % @ 21 A-88.4 V	40 % @ 40 A-120 V 60 % @ 30 A-140 V 100 % @ 25 A-140 V	35 % @ 30 A-92 V 60 % @ 26 A-90.4 V 100 % @ 21 A-88.4 V	50 % @ 45 A, 100 % @ 32 A (230 VAC) 40 % @ 25 A, 100 % @ 16 A (120 VAC)	80 % @ 45 A, 100 % @ 40 A	50 % @ 55 A-170 V 100 % @ 41 A-170 V	100 % @ 75 A-170 V	50 % @ 100 A-170 V 60 % @ 91 A-170 V 100 % @ 80 A-170 V
I1 max	22 A	26 A	28.8 A	36.7 A	16.2 A	14.9 A	21.6 A	29.6 A
I1 eff	13 A	16.4 A	17 A	23.2 A	14.4 A	10.5 A	17.8	20.7 A
Weight [kg]	10.5	11.8		12.7		11.8	24	24
Width [mm]	165	177		177		177	265	265
Depth [mm]	480	467		467		467	560	560
Height [mm]	290	228		228		229	400	400
Industry (IOT) 4.0	Not applicable							
Handheld Application	Yes	Yes		Yes		Yes	Yes	Yes
Mechanised Application	Not applicable	Optional, Yes		Optional, Yes		Optional, Yes	Optional, Yes	Optional, Yes
Gouging	Not recommended	Possible		Possible		Yes	Yes	Yes
Grid Cutting	Yes	Yes		Yes		Yes	Yes	Yes
Torch	FHT-EX®30H	FHT-EX®40		FHT-EX®45TT		FHT-EX®105RTX		
Information's	48 l/min @ 4.5 bar dynamic	120 l/min @ 4.5 bar dynamic		90 l/min @ 4.5 bar dynamic		105 A / 100 A approx. 135 l/min, 85 A / 75 A approx. 110 l/min, 65 A / 55 A approx. 98 l/min, 45 A approx. 87 l/min		
Recommended Cut	(*) 8 mm	(*) 12 mm	(*) 8 mm	(*) 12 mm	(*) 12 mm	(*) 20 mm	(*) 25 mm	(*) 35 mm
Maximum	(*) 10 mm	(*) 20 mm	(*) 10 mm	(*) 25 mm	(*) 25 mm	(*) 30 mm	(*) 35 mm	(*) 50 mm
Piercing	(*) 8 mm	(*) 8 mm	(*) 8 mm	(*) 10 mm	(*) 10 mm	(*) 20 mm	(*) 20 mm	(*) 20 mm
Recommended Cut	(**) 4 mm	(**) 4 mm	(**) 4 mm	(**) 12 mm	(**) 12 mm	(**) 15 mm	(**) 18 mm	(**) 20 mm
Maximum	(**) 8 mm	(**) 8 mm	(**) 8 mm	(**) 20 mm	(**) 20 mm	(**) 25 mm	(**) 25 mm	(**) 38 mm
Piercing	(**) 4 mm	(**) 4 mm	(**) 4 mm	(**) 10 mm	(**) 10 mm	(**) 16 mm	(**) 20 mm	(**) 20 mm
Recommended Cut	(***) 6 mm	(***) 6 mm	(***) 6 mm	(***) 12 mm	(***) 12 mm	(***) 15 mm	(***) 18 mm	(***) 20 mm
Maximum	(***) 10 mm	(***) 10 mm	(***) 10 mm	(***) 20 mm	(***) 20 mm	(***) 25 mm	(***) 25 mm	(***) 35 mm
Piercing	(***) 6 mm	(***) 6 mm	(***) 6 mm	(***) 10 mm	(***) 10 mm	(***) 16 mm	(***) 20 mm	(***) 20 mm
Gas type	Compressed Air							
Gas quality	Recommended Air quality: ISO 8573-1 Class 1.2.2.							
Air specification	Air max. particle size: 0.1 microns, class 1 ref. to ISO 8573,							
	Air max. oil: 0.1 mg/m³, class 2 ref.: ISO 8573,							
	Air max. dew point: +3° C, class 4 ref. to ISO 8573							
Nitrogen	Purity ≥ 99,99%							
Gas quality	Clean, moisture-free, without oil							
	(*) Recommendation up to based on low alloyed steel handheld cutting starting from the edge (up to)							
	(**) Recommendation up to based SST handheld cutting starting from the edge (up to)							
	(***) Recommendation up to based on Aluminium handheld cutting starting from the edge (up to)							

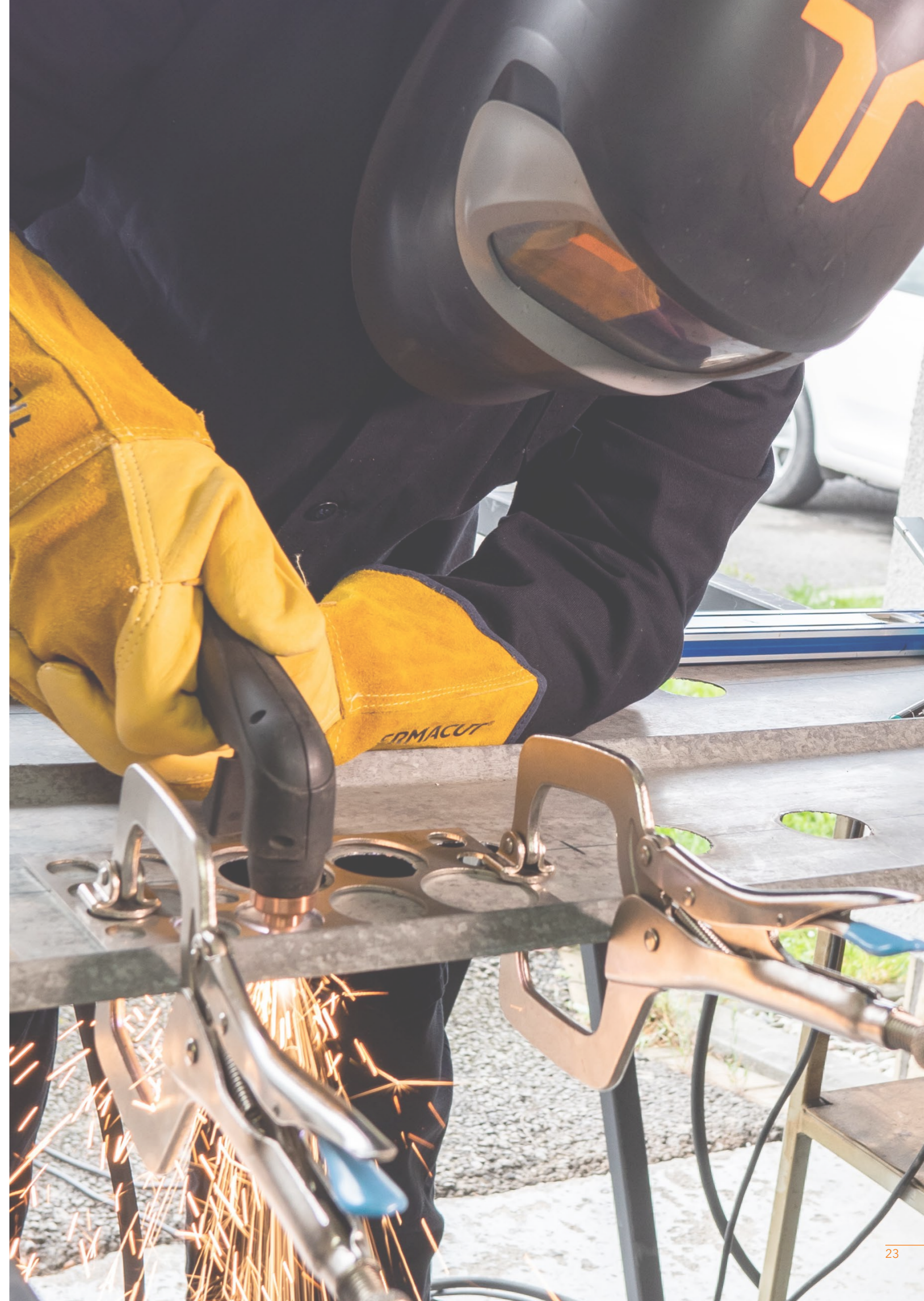
Last update of this page: 09/06/2021. See Revision history for details.

Last update of this page: 09/06/2021. See Revision history for details.

EX-TRAFIRE[®] 30H

PORTABLE AND POWERFUL PLASMA CUTTING SYSTEM

Last update of this page: 09/06/2021. See Revision history for details.



EX-TRAFIRE® 30H



CUTTING
30 A
CURRENT

MATERIAL
10+^{mm}
THICKNESS

WEIGHT
10,5
KILOGRAMS

SIMPLE OPERATION



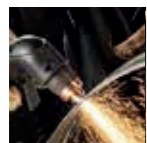
- + Plug & cut
- + Easily accessible filter regulator
- + Engineered for professionals and metal artists

HIGHEST APPLICATION FLEXIBILITY



- + Plate thicknesses up to 10 mm +
- + Lightweight, exceptionally portable
- + Fixed torch with flexible torch package

EX-TRA PERFORMANCE



- + Cutting
- + Precise cuts
- + Easy operation

BEST COST-EFFECTIVENESS



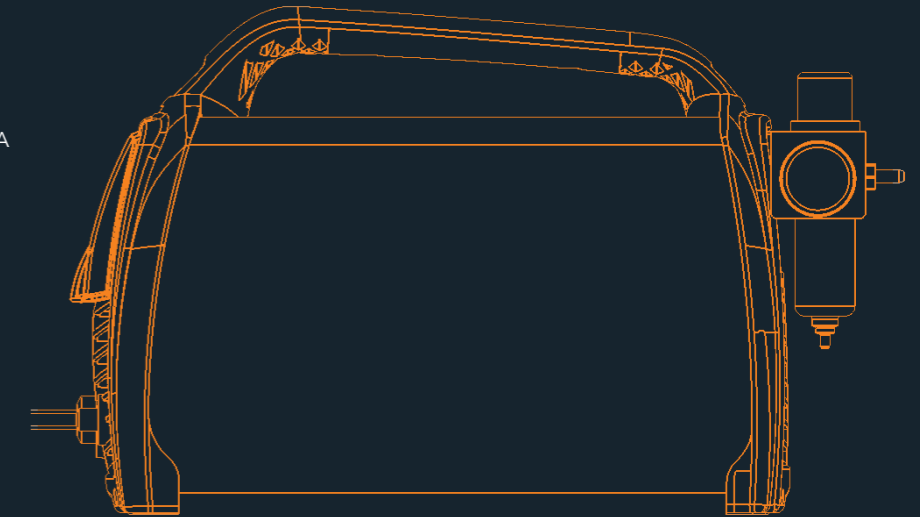
- + Very low investment
- + Lower running costs

Last update of this page: 09/06/2021. See Revision history for details.

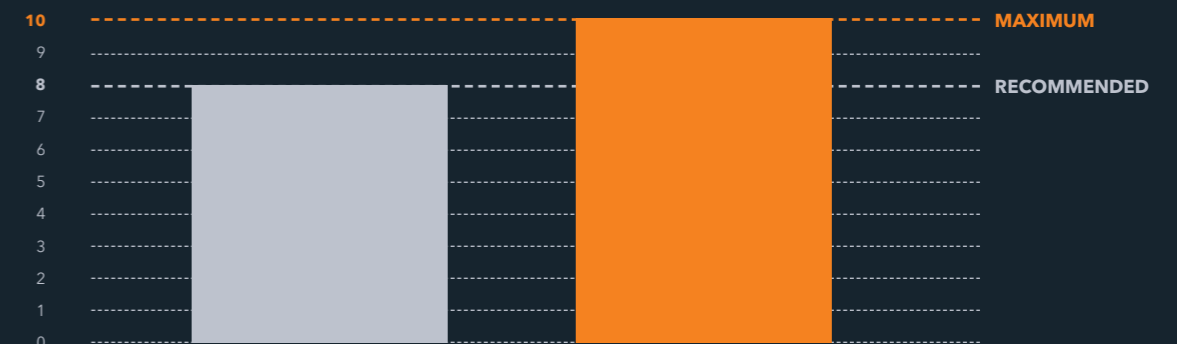
EX-TRAFIRE® 30H

SPECIFICATIONS

- AMPS (A) 10-30
- INPUT VOLTAGE [VAC] 220-240 V ± 15 %
- PLASMA GAS COMPRESSED AIR
- CERTIFICATION CE, C-TICK, CCC
- MODES CUTTING
- FREQUENCY [Hz] 50/60
- MAXIMUM INPUT POWER [kVA] 4.9
- OUTPUT VOLTAGE [VDC] 92
- DUTY CYCLE @ 40 °C 35 % @ 30 A, 100 % @ 21 A
- DIMENSION (l x h x w) [mm] 480x290x165
- WEIGHT [kg] 10.5
- RECOMMENDED CUTTING CAPACITY [mm] 8
- SEVERANCE CUTTING CAPACITY [mm] 10
- PIERCING CUTTING CAPACITY [mm] 8
- AIR FLOW @ [lpm/bar] 48 @ 4.5
- MAXIMUM INPUT PRESSURE [bar/psi] 10/145
- PROTECTION LEVEL IP23S
- INSULATION CLASS H/F
- CNC INTERFACE NO
- INDUSTRY 4.0 NO
- TYPE OF HAND TORCH FHT-EX®30H



MILD STEEL CUTTING CAPACITY IN MILLIMETRES



COMPARISON WITH COMPETITIVE PLASMA CUTTING MACHINES

EX-TRAFIRE®30H IS THE MOST LIGHTWEIGHT IN ITS CLASS (INCLUDING TORCH AND WORK CABLE)



Last update of this page: 09/06/2021. See Revision history for details.

EX-TRAFIRE® 30H

ORDERING INFORMATION

Description	Length	Part No.
MANUAL PLASMA CUTTING SYSTEMS		
EX-TRAFIRE®30H/CE/1x220-240 VAC Hand System/ FHT-EX30H-FC 4m/H Starter Kit	4 m	EX-1-010-005

AVAILABLE BULK PACKS

Description	Pcs	Part No.
Bulk Pack - Electrode - 25 pcs	1	EX-2-434-014
Bulk Pack - Nozzle 30 A 0.8 mm - 25 pcs	1	EX-2-435-015
Bulk Pack - Hand (Contact) Shield 30 A - 18 pcs	1	EX-2-436-016
Bulk Pack - Machine Shield 30 A - 18 pcs	1	EX-2-437-017

ACCESSORIES

Description	STD Package QTY	Part No.
DN 7.2 ES Quick Connect Plug with male thread G 1/4"	1	EX-0-802-001
DN 7.2 ES Quick Connect Coupling with male thread G 1/4"	1	EX-0-802-002
Grease 25 ml	1	EX-0-805-001
Filter-EX Compressed Air Filter	1	EX-0-804-001
Filter-EX Air Filter Cartridge	8	EX-0-804-002
Circle cutting guide kit for FHT-EX®30/40H	1	EX-2-801-001

Last update of this page: 09/06/2021. See Revision history for details.

EX-TRAFIRE® 30H



FRONT VIEW

BACK VIEW



SIDE VIEW

Last update of this page: 09/06/2021. See Revision history for details.

FHT-EX® 30H



The extra-lightweight FHT-EX®30H handheld torch with a flexible cable is suitable for a wide range of applications and ideal for mobile use. This torch is optimally designed for use with EX-TRAFIRE® 30H power supplies. It is permanently connected to the power supply and provides precise cutting results on plate thicknesses of up to 10 mm and more.

This particularly cost-effective entry-level torch is the result of decades of experience in the field of plasma cutting. It features a robust and durable design in which all consumables can be replaced quickly and easily.

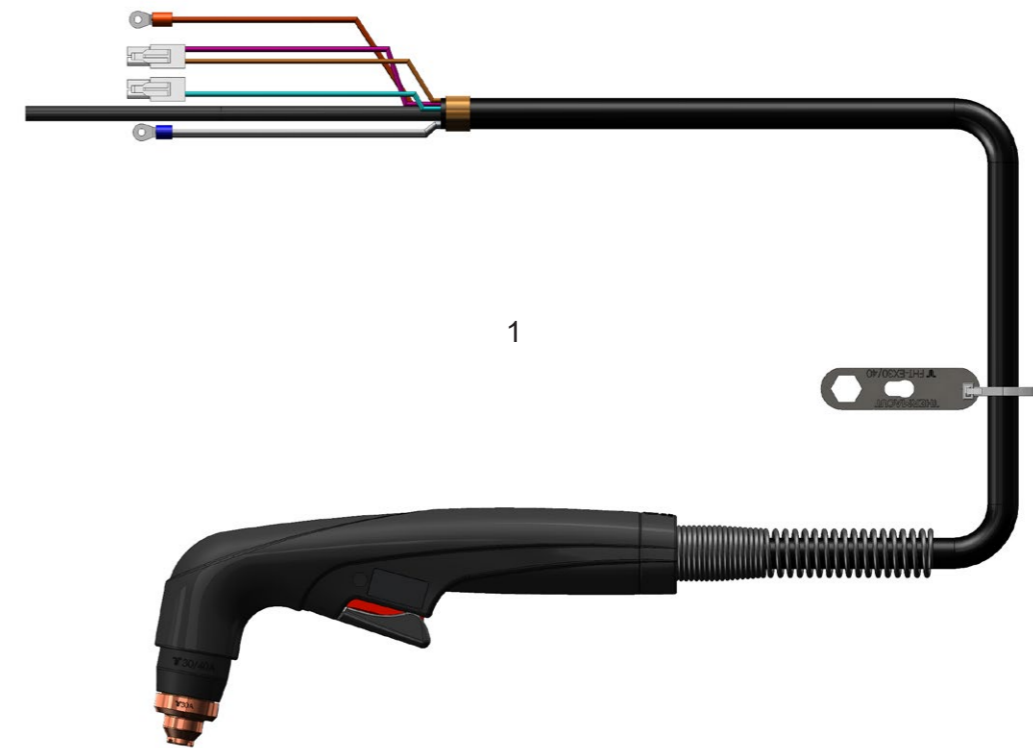
BENEFITS

- An ergonomically shaped handheld torch that reduces fatigue
- Compact and particularly flexible for handheld applications, even if difficult to reach
- A long lifetime thanks to a 100 % duty cycle at 21 A
- Ideal for plate thicknesses of up to 10 mm and more with high power reserves
- Consumables with an extended lifetime
- Optimal heat dissipation thanks to a screw-on electrode
- Piercing max. 8 mm
- Specially designed for use with the EX-TRAFIRE®30H power supply

Last update of this page: 09/06/2021. See Revision history for details.

FHT-EX® 30H

HAND TORCH ASSEMBLY

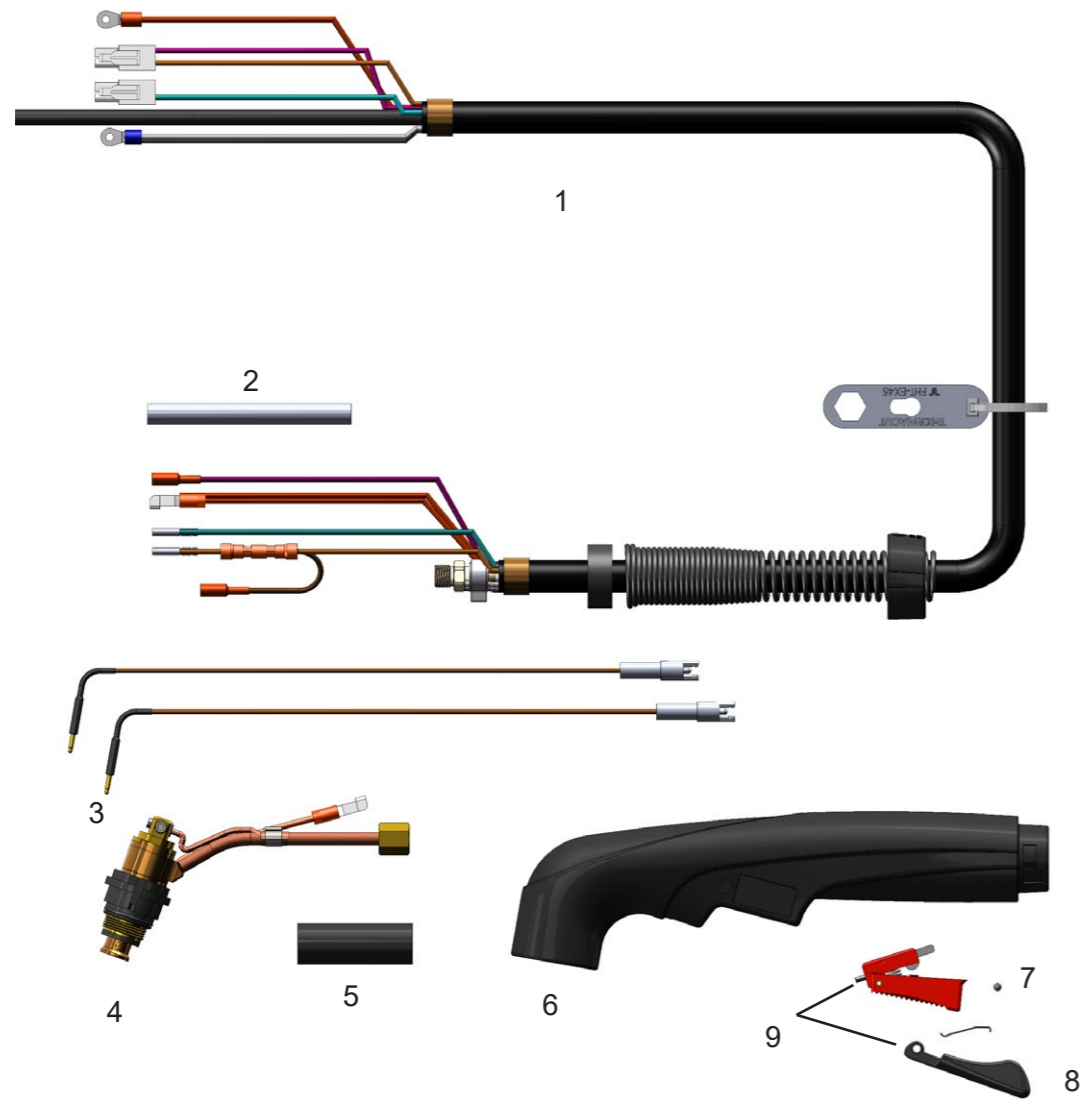


Item	Part No.	Description	Pcs.
1.	EX-1-134-001	FHT-EX®30H Hand Torch Assembly with 4m Lead/FC	1

Last update of this page: 09/06/2021. See Revision history for details.

FHT-EX® 30H

HAND TORCH COMPONENTS



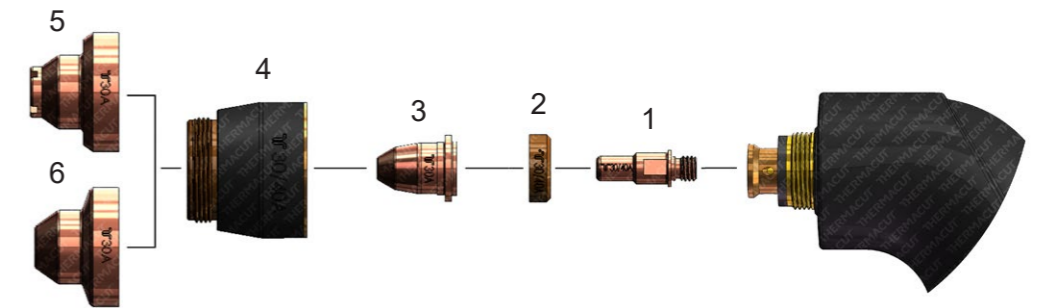
Item	Part No.	Description	Pcs.	Item	Part No.	Description	Pcs.
1.	EX-1-373-001	Hand Torch Lead Replacement Kit 4m Lead/FC	1	6.	EX-2-314-015	Hand Torch Handle Replacement Kit	1
2.	EX-0-319-021	Insulating Teflon Tube	1	7.	EX-5-309-013	Trigger	1
3.	EX-2-304-020	Hand Torch PIP Pins Replacement Kit (with Wires)	1	8.	EX-5-310-014	Trigger Guard	1
4.	EX-2-302-009	Hand Torch Body FHT-EX®30H	1	9.	EX-5-313-018	Safety Trigger Replacement Kit	1
5.	EX-0-319-011	Shrink Tube	1	NS	EX-2-431-014	O-Ring (fitted on the torch body)	2

Last update of this page: 11/05/2022. See Revision history for details.

CONSUMABLES

HAND TORCH CONSUMABLES

HAND
30 A SHIELDED
CONFIGURATION
MACHINE



Item	Part No.	Description	Pcs.	Item	Part No.	Description	Pcs.
1.	EX-2-401-001	Electrode	5	6.	EX-2-421-006	Machine Shield 30 A	1
2.	EX-2-404-002	Swirl Ring	2	NS	EX-2-434-014	Bulk Pack - Electrode - 25 pcs	1
3.	EX-2-409-003	Nozzle 30 A, 0.8 mm	5	NS	EX-2-435-015	Bulk Pack - Nozzle 30 A, 0.8 mm - 25 pcs	1
4.	EX-2-415-004	Nozzle Retaining Cap (Protection Cap)	1	NS	EX-2-437-017	Bulk Pack - Machine Shield 30 A - 18 pcs	1
5.	EX-2-419-005	Hand Shield 30 A	1				

NS NOT SHOWN IN THE PICTURE
⊕ FOR USE WITH CIRCLE CUTTING GUIDE OR FOR BEVEL CUTTING

Last update of this page: 09/06/2021. See Revision history for details.

EX-TRAFIRE[®]40SD

LIGHTWEIGHT AND POWERFUL PLASMA CUTTING SYSTEM.

Last update of this page: 09/06/2021. See Revision history for details.



EX-TRAFIRE® 40SD

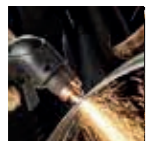


SIMPLE OPERATION



- + Plug & cut
- + Engineered for hobbyist

EX-TRA PERFORMANCE



- + Precise cuts
- + Easy operation

HIGHEST APPLICATION FLEXIBILITY



- + Plate thicknesses up to 15 mm +
- + Lightweight, exceptionally portable

BEST COST-EFFECTIVENESS



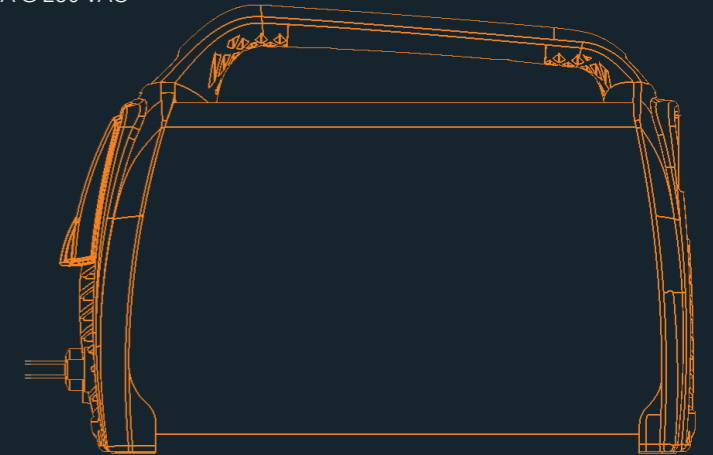
- + Very low investment
- + Lower running costs

Last update of this page: 09/06/2021. See Revision history for details.

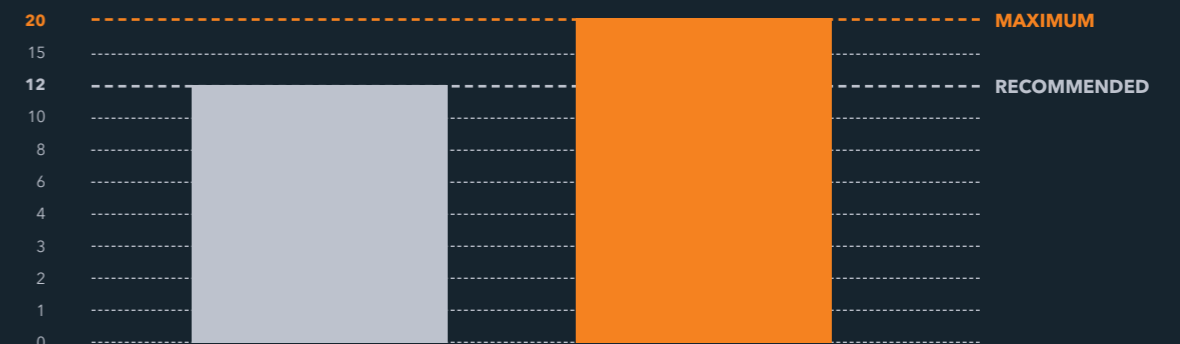
EX-TRAFIRE® 40SD

SPECIFICATIONS

- AMPS [A]** 10-30 A (120 VAC) / 10-40 A (230 VAC)
- INPUT VOLTAGE [VAC]** 100/240 VAC ± 15 %
- PLASMA GAS** COMPRESSED AIR
- CERTIFICATION** CE, C-TICK, CCC
- MODES** CUTTING / GRID CUTTING
- FREQUENCY [Hz]** 50/60
- MAXIMUM INPUT POWER [kVA]** 3.45 kVA @ 120 VAC / 5.98 kVA @ 230 VAC
- OUTPUT VOLTAGE [VDC]** 140
- DUTY CYCLE @ 40 °C** 40 % @ 40 A, 100 % @ 25 A
- DIMENSION (l x h x w) [mm]** 469x228x177
- WEIGHT [kg]** 11.8
- RECOMMENDED CUTTING CAPACITY [mm]** 12
- SEVERANCE CUTTING CAPACITY [mm]** 20
- PIERCING CUTTING CAPACITY [mm]** 8
- AIR FLOW @ [lpm/bar]** 120 @ 4.5
- MAXIMUM INPUT PRESSURE [bar/psi]** 10/145
- PROTECTION LEVEL** IP23S
- INSULATION CLASS** H/F
- CNC INTERFACE** YES
- INDUSTRY 4.0** NO
- TYPE OF TORCH** FHT-EX®40H/M



MILD STEEL CUTTING CAPACITY IN MILLIMETRES



COMPARISON WITH COMPETITIVE PLASMA CUTTING MACHINES

EX-TRAFIRE®40SD IS THE MOST POWERFUL SYSTEM IN IT'S CLASS.



Last update of this page: 09/06/2021. See Revision history for details.

EX-TRAFIRE® 40SD

ORDERING INFORMATION

Description	Length	Part No.
MANUAL PLASMA CUTTING SYSTEMS		
EX-TRAFIRE®40SD/CE/1x100-240 V Hand System/ FHT-EX40H 4m/H Starter Kit	4 m	EX-2-010-001
EX-TRAFIRE®40SD/CE/1x100-240 V Hand System/ FHT-EX40H 5m/H Starter Kit	5 m	EX-2-010-002
EX-TRAFIRE®40SD/CE/1x100-240 V Hand System/ FHT-EX40H 7,5m/H Starter Kit	7.5 m	EX-2-010-003
EX-TRAFIRE®40SD/CE/1x100-240 V Hand System/ FHT-EX40H 15m/H Starter Kit	15 m	EX-2-010-004
MECHANIZED PLASMA CUTTING SYSTEMS		
EX-TRAFIRE®40SD/CE/1x100-240 V Machine System/ FHT-EX40M 4m/M Starter Kit	4 m	EX-2-011-001
EX-TRAFIRE®40SD/CE/1x100-240 V Machine System/ FHT-EX40M 5m/M Starter Kit	5 m	EX-2-011-002
EX-TRAFIRE®40SD/CE/1x100-240 V Machine System/ FHT-EX40M 7,5m/M Starter Kit	7.5 m	EX-2-011-003
EX-TRAFIRE®40SD/CE/1x100-240 V Machine System/ FHT-EX40M 15m/M Starter Kit	15 m	EX-2-011-004
PLASMA POWER SUPPLY UNITS		
EX-TRAFIRE®40SD/CE/1x100-240 V power supply unit (Fully-equipped*)		EX-2-001-007

* Fully-equipped=CNC interface & Serial interfaceport (CAN bus)

AVAILABLE BULK PACKS

Description	Pcs	Part No.
Bulk Pack - Electrode - 25 pcs	1	EX-2-434-014
Bulk Pack - Nozzle 30 A - 25 pcs	1	EX-2-435-015
Bulk Pack - Hand (contact) Shield 30 A - 18 pcs	1	EX-2-436-016
Bulk Pack - Machine Shield 30 A - 18 pcs	1	EX-2-437-017
Bulk Pack - Nozzle 40 A - 25 pcs	1	EX-2-435-001
Bulk Pack - Hand (contact) Shield 40 A - 18 pcs	1	EX-2-436-001
Bulk Pack - Machine Shield 40 A - 18 pcs	1	EX-2-437-001

ACCESSORIES

Description	Pcs	Part No.
DN 7.2 ES Quick Connect Plug with female thread G 1/4"	1	EX-0-802-000
DN 7.2 ES Quick Connect Plug with male thread G 1/4"	1	EX-0-802-001
DN 7.2 ES Quick Connect Coupling with male thread G 1/4"	1	EX-0-802-002
Grease 25 ml	1	EX-0-805-001
Filter-EX Compressed Air Filter	1	EX-0-804-001
Filter-EX Air Filter Cartridge	8	EX-0-804-002
Circle cutting guide kit for FHT-EX®30/40H	1	EX-2-801-001

Last update of this page: 09/06/2021. See Revision history for details.

EX-TRAFIRE® 40SD



FRONT VIEW



BACK VIEW



SIDE VIEW

Last update of this page: 09/06/2021. See Revision history for details.

FHT-EX® 40H



The lightweight FHT-EX®40H hand and machine torches with flexible cables are suitable for a wide range of applications and ideal for mobile use. These torches are optimally designed for use with EX-TRAFIRE®40SD power sources and are suitable for cutting and grid-cutting. They provide precise cutting results on plate thicknesses of up to 15 mm and more.

Thanks to the THERMACUT® Torch Connection System (TCS), changing the torch is a quick and easy process. The powerful torches are the result of decades of experience in the field of plasma cutting. They feature an extremely robust and durable design in which all consumables can be replaced quickly and easily.

BENEFITS

- An ergonomically shaped handheld torch that reduces fatigue
- Compact and particularly flexible for handheld applications, even if difficult to reach a long lifetime thanks to a 100 % duty cycle at 25 A
- Ideal for plate thicknesses of up to 15 mm and more with high power reserves
- Consumables with an extended lifetime
- Quick and tool-free replacement of consumables
- Piercing max. 10 mm
- Specially designed for use with the EX-TRAFIRE®40SD power supply

Last update of this page: 09/06/2021. See Revision history for details.

FHT-EX® 40H

HAND TORCH ASSEMBLY



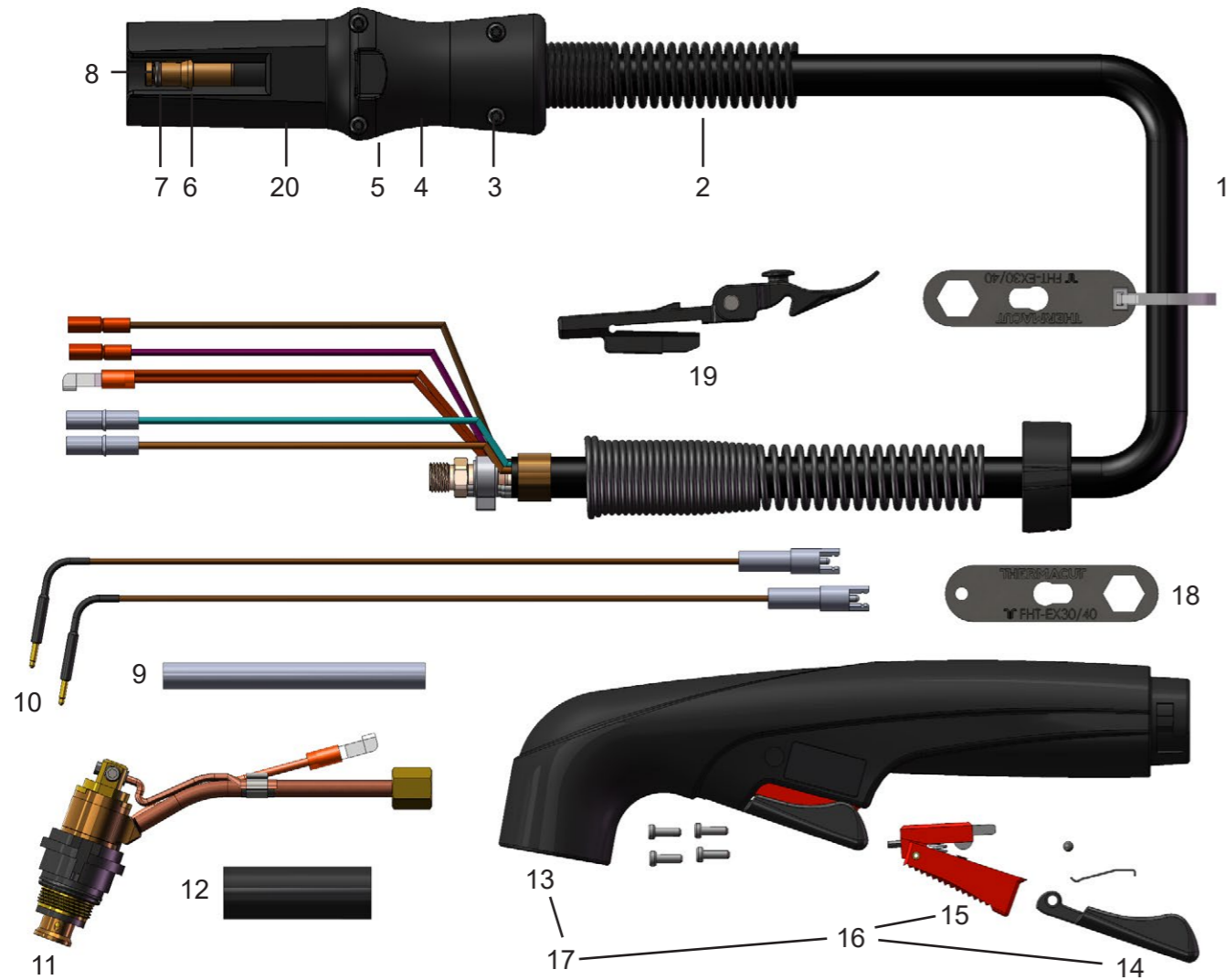
Item	Part No.	Description	Pcs
1.	EX-2-133-000	DEMO FHT-EX®40H Hand Torch Assembly/TCS13	1
	EX-2-130-001	FHT-EX®40H Hand Torch Assembly w/o consumables/4m Lead/TCS13	1
	EX-2-101-003	FHT-EX®40H Hand Torch Assembly w/o consumables/5m Lead/TCS13	1
	EX-2-131-005	FHT-EX®40H Hand Torch Assembly w/o consumables/7.5m Lead/TCS13	1
	EX-2-106-007	FHT-EX®40H Hand Torch Assembly w/o consumables/15m Lead/TCS13	1
2.	EX-0-321-003	Latch with Key Assembly	1

⊕ LATCH WITH KEY IS NOT CONTENT OF TORCHES ABOVE. IF YOU NEED IT, YOU HAVE TO ORDER SEPARATELY.

Last update of this page: 09/06/2021. See Revision history for details.

FHT-EX® 40H

HAND TORCH COMPONENTS



Item	Part No.	Description	Pcs	Item	Part No.	Description	Pcs
OD 1.	EX-2-328-001	Hand Torch Lead Replacement Kit 4m Lead/TCS13	1	10.	EX-2-304-020	Hand Torch PIP Pins Replacement Kit (with Wires)	1
OD	EX-2-331-002	Hand Torch Lead Replacement Kit 5m Lead/TCS13	1	11.	EX-2-302-009	Hand Torch Body FHT-EX®40H	1
OD	EX-2-329-003	Hand Torch Lead Replacement Kit 7.5m Lead/TCS13	1	12.	EX-0-319-011	Shrink Tube	1
OD	EX-2-336-004	Hand Torch Lead Replacement Kit 15m Lead/TCS13	1	13.	EX-2-308-012	Hand Torch Handle Kit	1
	2.	EX-5-318-001	1	14.	EX-5-310-014	Trigger Guard	1
	3.	EX-0-325-015	1	15.	EX-5-309-013	Trigger	1
	4.	EX-0-325-002	1	16.	EX-5-313-018	Safety Trigger Replacement Kit	1
	5.	EX-0-325-001	1	17.	EX-2-314-015	Hand Torch Handle Replacement Kit	1
	6.	EX-0-325-010	1	18.	EX-2-427-010	Electrode Wrench FHT-EX®30/40	1
	7.	EX-0-325-009	1	19.	EX-0-321-003	Latch with Key Assembly	1
	8.	EX-0-325-005	1	20.	EX-0-323-001	TCS13 Plug Body	1
	9.	EX-0-319-021	1	NS	EX-2-431-014	O-Ring (fitted on the torch body)	2

OD ON DEMAND - WE DO NOT KEEP THESE PARTS IN STOCK, COST IS SET ACCORDING TO THE ORDERED QUANTITY, DELIVERY TIME MAY DIFFER FROM STANDARD PRODUCT

Last update of this page: 11/05/2022. See Revision history for details.

FHT-EX® 40M

MACHINE TORCH ASSEMBLY



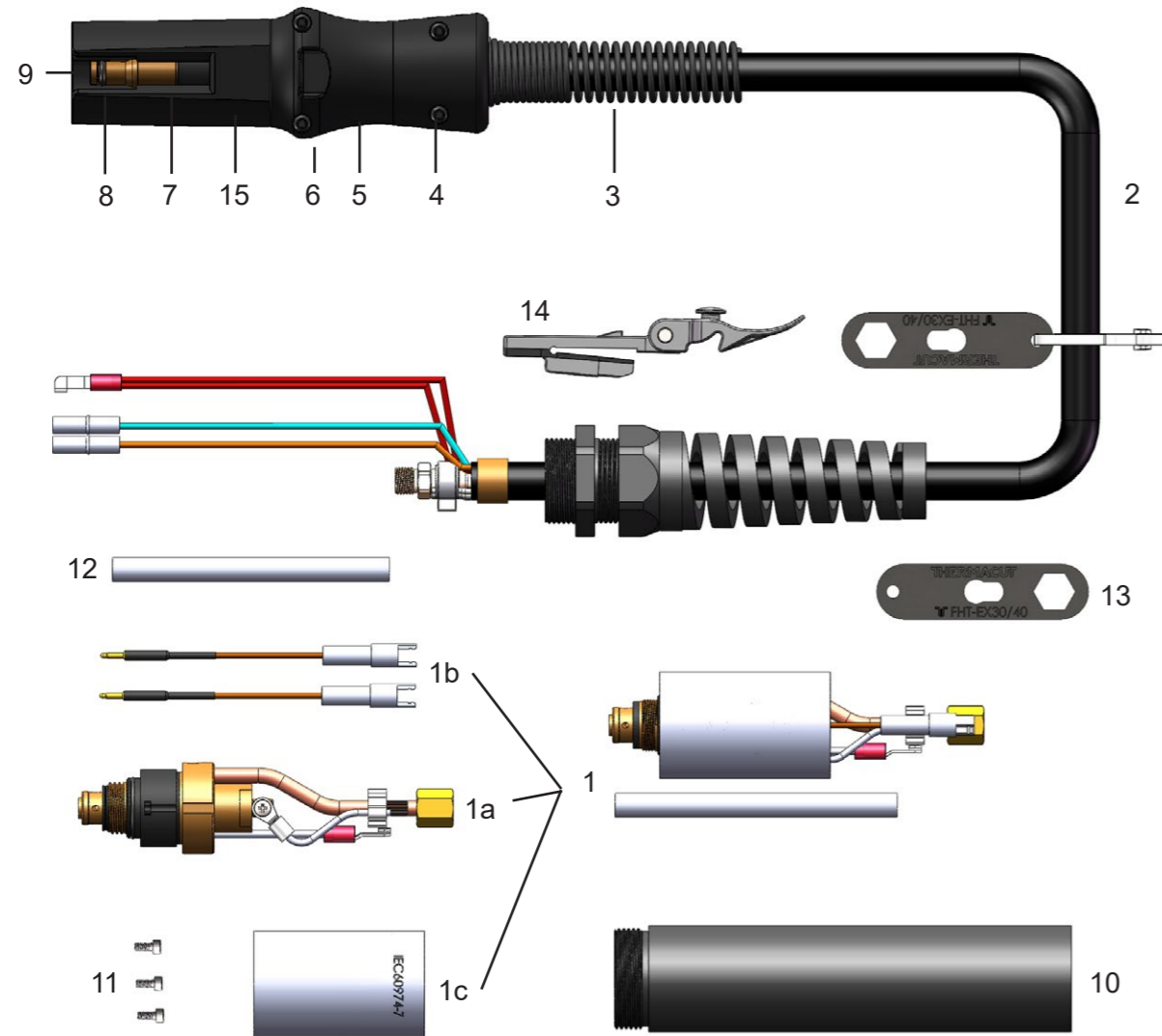
Item	Part No.	Description	Pcs
1.	EX-2-233-000	DEMO FHT-EX®40M Machine Torch Assembly/TCS13	1
	EX-2-235-001	FHT-EX®40M Machine Torch Assembly w/o consumables/4m Lead/TCS13	1
	EX-2-202-003	FHT-EX®40M Machine Torch Assembly w/o consumables/5m Lead/TCS13	1
	EX-2-236-005	FHT-EX®40M Machine Torch Assembly w/o consumables/7.5m Lead/TCS13	1
	EX-2-207-007	FHT-EX®40M Machine Torch Assembly w/o consumables/15m Lead/TCS13	1
2.	EX-0-321-003	Latch with Key Assembly	1

LATCH WITH KEY IS NOT CONTENT OF TORCHES ABOVE. IF YOU NEED IT, YOU HAVE TO ORDER SEPARATELY.

Last update of this page: 09/06/2021. See Revision history for details.

FHT-EX® 40M

MACHINE TORCH COMPONENTS



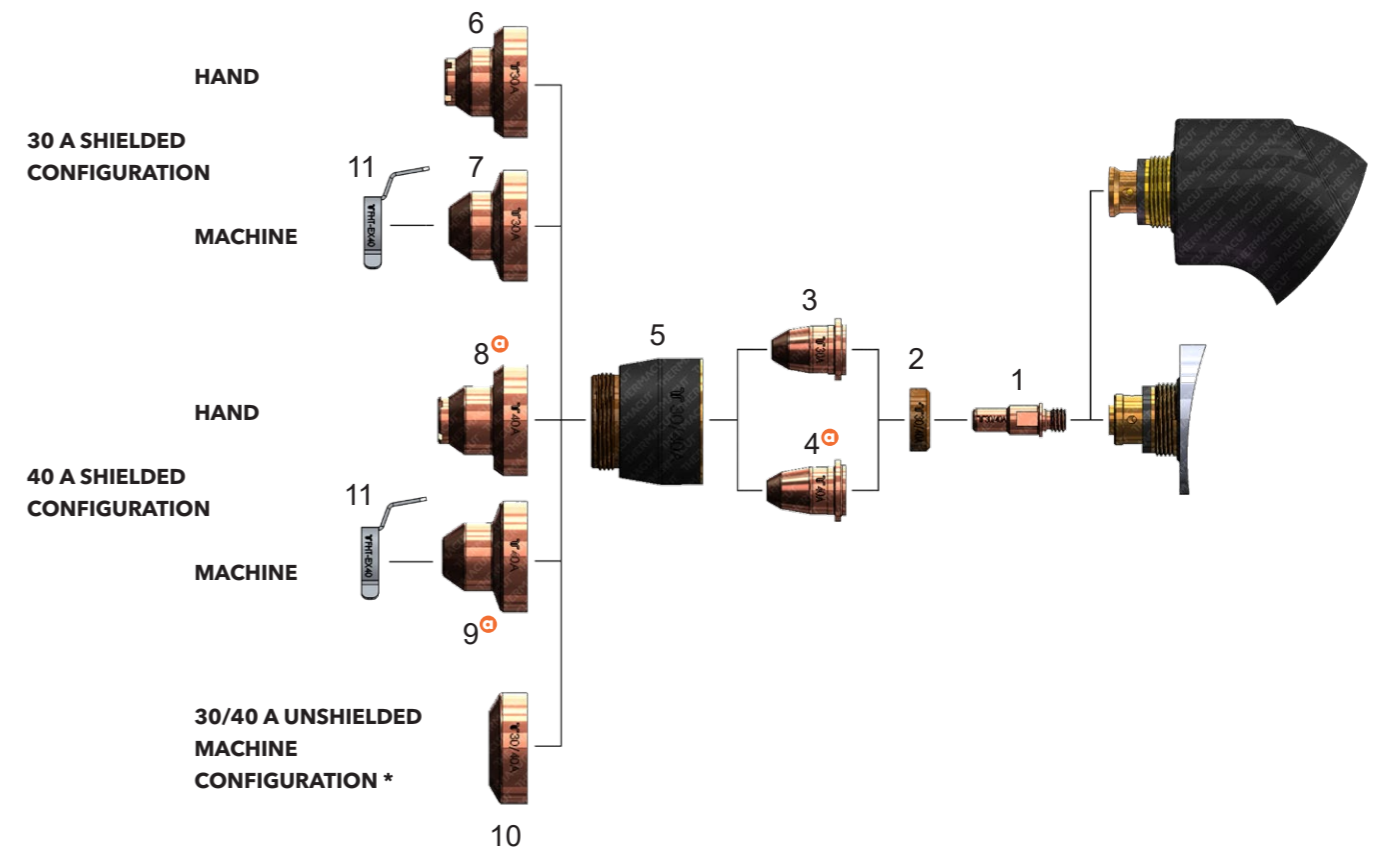
Item	Part No.	Description	Pcs	Item	Part No.	Description	Pcs
1.	EX-2-301-010	Machine Torch Body Assembly FHT-EX®40M	1	6.	EX-0-325-001	TCS Clam Shell Lower	1
1a.	EX-2-301-011	Machine Torch Body FHT-EX®40M	1	7.	EX-0-325-010	Retaining Ring (Outer Circlip Ring)	1
1b.	EX-2-304-021	Machine Torch PIP Pins Replacement Kit (with Wires)	1	8.	EX-0-325-009	O-Ring (fitted in the TCS plug)	1
1c.	EX-2-306-022	Torch Mounting Sleeve (incl. screws)	1	9.	EX-0-325-005	Male Crimp Pin for TCS Plug	1
OD 2.	EX-2-326-005	Machine Torch Lead Replacement Kit 4m Lead/TCS13	1	10.	EX-2-306-023	Torch Positioning Sleeve	1
OD	EX-2-352-006	Machine Torch Lead Replacement Kit 5m Lead/TCS13	1	11.	EX-0-372-001	Torch Mounting Screw	1
OD	EX-2-327-007	Machine Torch Lead Replacement Kit 7.5m Lead/TCS13	1	12.	EX-0-319-021	Insulating Teflon Tube	1
	EX-2-357-008	Machine Torch Lead Replacement Kit 15m Lead/TCS13	1	13.	EX-2-427-010	Electrode Wrench FHT-EX®40	1
3.	EX-5-318-001	TCS Plug Spring Strain Relief	1	14.	EX-0-321-003	Latch with Key Assembly	1
4.	EX-0-325-015	TCS Clam Shell Screw	1	15.	EX-0-323-001	TCS13 Plug Body	1
5.	EX-0-325-002	TCS Clam Shell Upper	1	NS	EX-2-431-014	O-Ring (fitted on the torch body)	2

OD ON DEMAND - WE DO NOT KEEP THESE PARTS IN STOCK, COST IS SET ACCORDING TO THE ORDERED QUANTITY, DELIVERY TIME MAY DIFFER FROM STANDARD PRODUCT

Last update of this page: 24/01/2022. See Revision history for details.

CONSUMABLES

HAND / MACHINE TORCH CONSUMABLES



Item	Part No.	Description	Pcs	Item	Part No.	Description	Pcs
1.	EX-2-401-001	Electrode	5	9.	EX-2-421-001	Machine Shield 40 A	1
2.	EX-2-404-002	Swirl Ring	2	10.	EX-2-423-107	Deflector	1
3.	EX-2-409-003	Nozzle 30 A 0.8 mm	5	NS	EX-2-434-014	Bulk Pack - Electrode - 25 pcs	1
4.	EX-2-409-001	Nozzle 40 A 0.9 mm	5	NS	EX-2-435-015	Bulk Pack - Nozzle 30 A 0.8 mm - 25 pcs	1
5.	EX-2-415-004	Nozzle Retaining Cap (Protection Cap)	1	NS	EX-2-435-001	Bulk Pack - Nozzle 40 A 0.9 mm - 25 pcs	1
6.	EX-2-419-005	Hand Shield 30 A	1	NS	EX-2-437-017	Bulk Pack - Machine Shield 30 A - 18 pcs	1
7.	EX-2-421-006	Machine Shield 30 A	1	NS	EX-2-437-001	Bulk Pack - Machine Shield 40 A - 18 pcs	1
8.	EX-2-419-001	Hand Shield 40 A	1	11.	EX-2-428-011	IHS Ohmic Clip	1

NS NOT SHOWN IN THE PICTURE

***** IN COUNTRIES FOLLOWING CE STANDARDS, UNSHIELDED CONSUMABLE CONFIGURATION MAY ONLY BE USED IN MECHANIZED TORCH APPLICATIONS.

⊕ **ONLY FOR EX-TRAFIRE®40SD**

Last update of this page: 09/06/2021. See Revision history for details.

EX-TRAFIRE[®] 45SD

PROFESSIONAL AND VERSATILE PLASMA CUTTING SYSTEM.

Last update of this page: 09/06/2021. See Revision history for details.



EX-TRAFIRE® 45SD



SIMPLE OPERATION



- + Bright LCD system information and control panel
- + Easily accessible, protected filter regulator
- + Engineered for professionals and demanding beginners

HIGHEST APPLICATION FLEXIBILITY



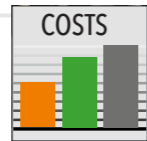
- + Plate thicknesses up to 25 mm +
- + Lightweight, exceptionally portable
- + TCS quick change flexible torch packages
- + Suitable for generator use

EX-TRA PERFORMANCE



- + Cutting, gouging, grid mode
- + Exact cuts
- + Industry leading blue LCD display

BEST COST-EFFECTIVENESS



- + Significantly lower investment
- + High consumable lifetime
- + Lower running costs

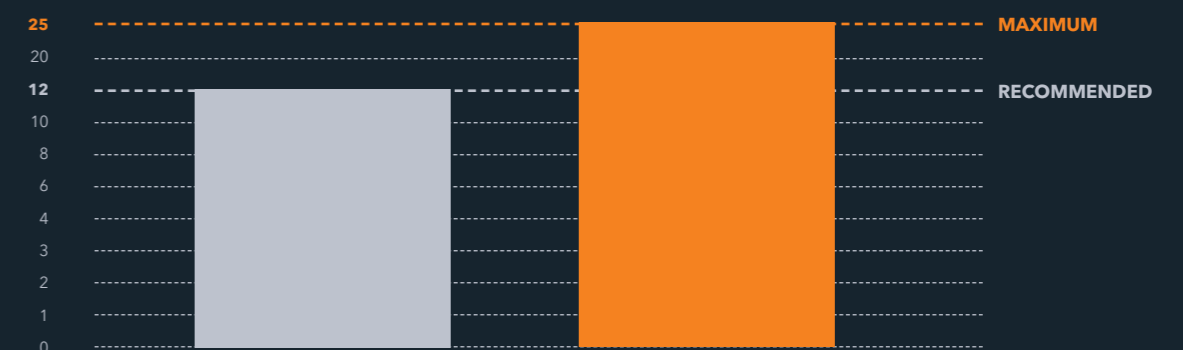
Last update of this page: 09/06/2021. See Revision history for details.

EX-TRAFIRE® 45SD

SPECIFICATIONS

	SINGLE PHASE		THREE PHASE
Input voltage [VAC]	1x120 V +-15 %	1x230 V +-15 %	3x400 V +-15 %
Amps [A]	20-25	20-45	20-45
Plasma gas	Compressed air		
Certification CE, C-TICK, CCC	CE	CE/C-TICK	CE/C-TICK
Modes	CUTTING / GOUGING / GRID CUTTING		
Frequency [Hz]	50/60		
Maximum input power [kVA]	4.4	7.59	6.48
Output voltage [VDC]	145		
Duty cycle @ 40 °C	40 % @ 25 A / 100 % @ 16 A	50 % @ 45 A / 10 0% @ 32 A	80 % @ 45 A / 100 % 40 A
Dimension (l x h x w) [mm]	469 x 228 x 177		
Weight [KG]	12.7		
Recommended cutting capacity [mm]	8	12	
Severance cutting capacity [mm]	12	25	
Piercing cutting capacity [mm]	10	10	
Air flow @ [lpm/bar]	90 @ 4.8		
Maximum input pressure [bar/psi]	10/145		
Protection level	IP23S		
Insulation class	F		
CNC interface	YES		
Industry 4.0	NO		
Type of hand torch	FHT-EX®45TTH		
Type of machine torch	FHT-EX®45TTM		

MILD STEEL CUTTING CAPACITY IN MILLIMETRES



Last update of this page: 09/06/2021. See Revision history for details.

EX-TRAFIRE® 45SD

ORDERING INFORMATION

Description	Length	Part No.
MANUAL PLASMA CUTTING SYSTEMS		
EX-TRAFIRE®45SD/CE/3x400 V Hand System/FHT-EX®45TTH 5m/H Starter Kit	5 m	EX-2-010-011
EX-TRAFIRE®45SD/CE/3x400 V Hand System/FHT-EX®45TTH 8m/H Starter Kit	8 m	EX-2-010-012
EX-TRAFIRE®45SD/CE/3x400 V Hand System/FHT-EX45®TTH 15m/H Starter Kit	15 m	EX-2-010-013
EX-TRAFIRE®45SD/CE/1x110/230 V Hand System/FHT-EX45®TTH 5m/H Starter Kit	5 m	EX-2-010-020
EX-TRAFIRE®45SD/CE/1x110/230 V Hand System/FHT-EX45®TTH 8m/H Starter Kit	8 m	EX-2-010-021
EX-TRAFIRE®45SD/CE/1x110/230 V Hand System/FHT-EX45®TTH 15m/H Starter Kit	15 m	EX-2-010-022
MECHANIZED PLASMA CUTTING SYSTEMS		
EX-TRAFIRE®45SD/CE/3x400 V Machine System/FHT-EX45®TTM 5m/M Starter Kit	5 m	EX-2-011-008
EX-TRAFIRE®45SD/CE/3x400 V Machine System/FHT-EX45®TTM 8m/M Starter Kit	8 m	EX-2-011-009
EX-TRAFIRE®45SD/CE/3x400 V Machine System/FHT-EX45®TTM 15m/M Starter Kit	15 m	EX-2-011-010
EX-TRAFIRE®45SD/CE/1x110/230 V Machine System/FHT-EX45®TTM 5m/M Starter Kit	5 m	EX-2-011-014
EX-TRAFIRE®45SD/CE/1x110/230 V Machine System/FHT-EX45®TTM 8m/M Starter Kit	8 m	EX-2-011-015
EX-TRAFIRE®45SD/CE/1x110/230 V Machine System/FHT-EX45®TTM 15m/M Starter Kit	15 m	EX-2-011-016
PLASMA POWER SUPPLY UNITS		
EX-TRAFIRE®45SD/CE/3x400 V power supply unit (Fully-equipped*)		EX-2-001-030
EX-TRAFIRE®45SD/CE/1x110/230 V power supply unit (Fully-equipped*)		EX-2-001-024

* Fully-equipped=CNC interface & Serial interfaceport (CAN bus)

AVAILABLE BULK PACKS

Description	Pcs	Part No.
Bulk Pack-Electrode - 25 pcs	1	EX-2-434-201
Bulk Pack-Nozzle - 25 pcs	1	EX-2-435-201
Bulk Pack - Hand (Contact) Shield - 18 pcs	1	EX-2-436-201
Bulk Pack - Machine Shield - 18 pcs	1	EX-2-437-201

ACCESSORIES

Description	Pcs	Part No.
DN 7.2 ES Quick Connect Plug with female thread G 1/4"	1	EX-0-802-000
DN 7.2 ES Quick Connect Plug with male thread G 1/4"	1	EX-0-802-001
DN 7.2 ES Quick Connect Coupling with male thread G 1/4"	1	EX-0-802-002
Grease 25 ml	1	EX-0-805-001
Filter-EX Compressed Air Filter	1	EX-0-804-001
Filter-EX Air Filter Cartridge	8	EX-0-804-002

Last update of this page: 09/06/2021. See Revision history for details.

EX-TRAFIRE® 45SD



FRONT VIEW



BACK VIEW



SIDE VIEW

Last update of this page: 09/06/2021. See Revision history for details.

FHT-EX®45TT



FHT-EX®45TTH

HAND TORCH ASSEMBLY



The high-performant FHT-EX®45TT H/M hand and machine torches are ideal for meeting tough demands in continuous operation. These torches are optimally designed for use with EX-TRAFIRE®45SD power supplies and are suitable for cutting, gouging and grid-cutting. They can cut plate thickness of up to 25 mm and more precisely and quickly.

Thanks to the Thermacut® Torch Connection System (TCS), changing the torch is a quick and easy process. The powerful torches are the result of decades of experience in the field of plasma cutting. They feature an extremely robust and durable design in which all consumables can be replaced quickly and easily.

BENEFITS

- High-performant torches for mechanised applications and handheld use
- Ergonomic handheld torches for safe and reliable holding and guiding in all positions
- Compact and flexible for handheld applications, even in the case of tight radii or gouging of fillet welds
- 100 % duty cycle at 45 A, ideal for continuous use
- Ideal for plate thicknesses of up to 25+ mm and more with high power reserves
- Consumables with an extended lifetime
- Quick and tool-free replacement of consumables
- Piercing max. 10 mm
- Perfectly designed for use with EX-TRAFIRE®45SD power supplies

Last update of this page: 09/06/2021. See Revision history for details.

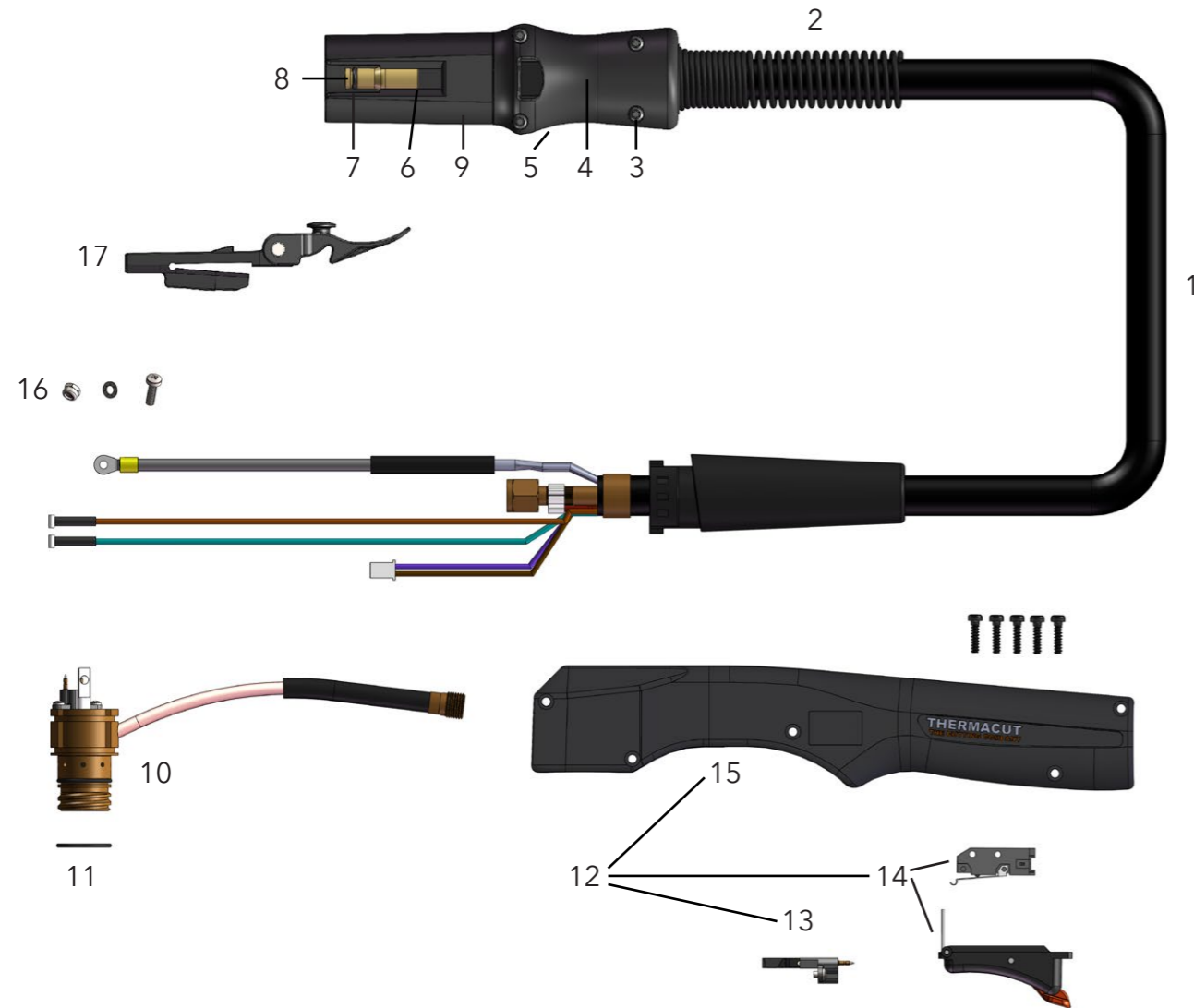
Item	Part No.	Description	Pcs
1.	EX-2-133-001	FHT-EX45®TTH DEMO Hand Torch Assembly w/consumables/TCS13	1
	EX-2-101-001	FHT-EX45®TTH Hand Torch Assembly w/o consumables w/5m Lead/TCS13	1
	EX-2-103-001	FHT-EX45®TTH Hand Torch Assembly w/o consumables w/8m Lead/TCS13	1
	EX-2-106-001	FHT-EX45®TTH Hand Torch Assembly w/o consumables w/15m Lead/TCS13	1
2.	EX-0-321-003	Latch with Key Assembly	1

⊕ LATCH WITH KEY IS NOT CONTENT OF TORCHES ABOVE. IF YOU NEED IT, YOU HAVE TO ORDER SEPARATELY.

Last update of this page: 09/06/2021. See Revision history for details.

FHT-EX®45TTH

HAND TORCH COMPONENTS



Item	Part No.	Description	Pcs	Item	Part No.	Description	Pcs
1.	EX-2-331-001	FHT-EX®45TTH Hand Torch Lead Replacement Kit 5m Lead/TCS13	1	9.	EX-0-323-001	TCS13 Plug Body	1
1.	EX-2-333-001	FHT-EX®45TTH Hand Torch Lead Replacement Kit 8m Lead/TCS13	1	10.	EX-2-302-001	Hand Torch Body FHT-EX®45TTH	1
1.	EX-2-336-001	FHT-EX®45TTH Hand Torch Lead Replacement Kit 15m Lead/TCS13	1	11.	EX-5-431-050	O-Ring (fitted on the torch body)	2
2.	EX-5-318-001	TCS Plug Spring Stain Relief	1	12.	EX-2-314-001	FHT-EX®45TTH Hand Torch Handle Replacement Kit	1
3.	EX-0-325-015	TCS Clam Shell Screw	1	13.	EX-2-305-001	Cap-sensor Replacement Kit with Screws/ Hand Torch	1
4.	EX-0-325-002	TCS Clam Shell Upper	1	14.	EX-2-313-001	Safety Trigger with start switch	1
5.	EX-0-325-001	TCS Clam Shell Lower	1	15.	EX-2-308-001	Hand Torch Handle with Screws	1
6.	EX-0-325-010	Retaining Ring (Outer circlip ring)	1	16.	EX-5-372-010	Cathode mounting kit	1
7.	EX-0-325-009	O-Ring (fitted in the TCS plug)	1	17.	EX-0-321-003	Latch w/Key Assembly	1
8.	EX-0-325-005	Male Crimp Pin for TCS Plug	1				

Last update of this page: 09/06/2021. See Revision history for details.

FHT-EX®45TTM

MACHINE TORCH ASSEMBLY



Item	Part No.	Description	Pcs
1.	EX-2-233-001	FHT-EX®45TTM DEMO Machine Torch Assembly w/consumables/TCS13	1
	EX-2-202-001	FHT-EX®45TTM Machine Torch Assembly w/o consumables w/5m Lead/TCS13	1
	EX-2-204-001	FHT-EX®45TTM Machine Torch Assembly w/o consumables w/8m Lead/TCS13	1
	EX-2-207-001	FHT-EX®45TTM Machine Torch Assembly w/o consumables w/15m Lead/TCS13	1
2.	EX-0-321-003	Latch with Key Assembly	1

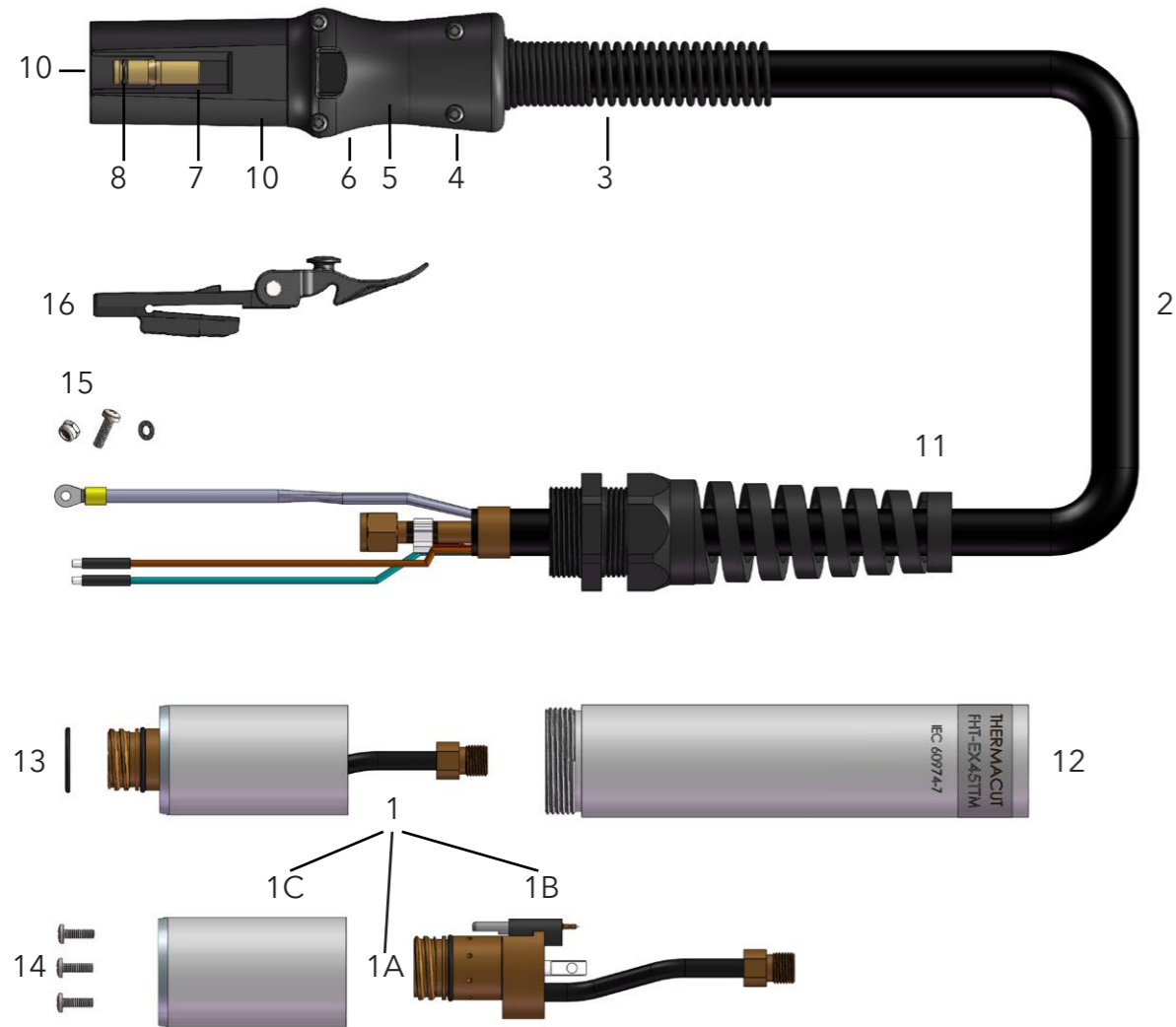
LATCH WITH KEY IS NOT CONTENT OF TORCHES ABOVE. IF YOU NEED IT, YOU HAVE TO ORDER SEPARATELY.

Last update of this page: 09/06/2021. See Revision history for details.

FHT-EX® 45TTM

CONSUMABLES

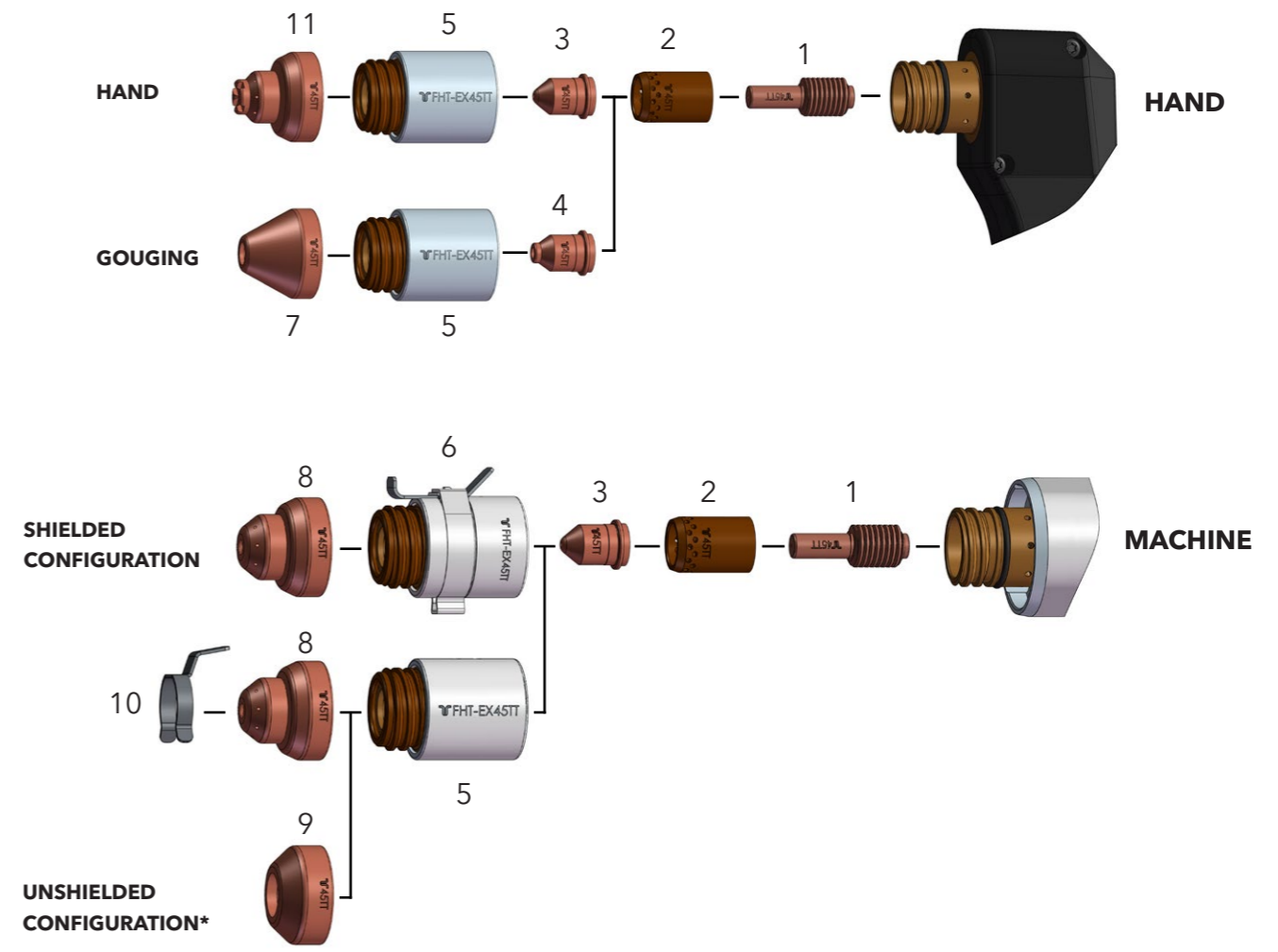
MACHINE TORCH COMPONENTS



Item	Part No.	Description	Pcs	Item	Part No.	Description	Pcs
1.	EX-2-301-001	Machine Torch Body Assembly FHT-EX®45TTM	1	7.	EX-0-325-010	Retaining Ring (Outer circlip ring)	1
1a.	EX-2-301-002	Machine Torch Body FHT-EX®45TTM	1	8.	EX-0-325-009	O-Ring (fitted in the TCS plug)	1
1b.	EX-5-304-001	Cap Sensor Replacement Kit with Screws / Machine Torch	1	9.	EX-0-325-005	Male Crimp Pin for TCS Plug	1
1c.	EX-5-306-002	Torch Mounting Sleeve (incl. 3 screws)	1	10.	EX-0-323-001	TCS13 Plug Body	1
2.	EX-2-352-001	FHT-EX®45TTM Machine Torch Lead Replacement Kit 5m Lead/TCS13	1	11.	EX-5-317-021	Machine Torch Strain Relief	1
	EX-2-354-001	FHT-EX®45TTM Machine Torch Lead Replacement 8m Lead/TCS13	1	12.	EX-2-306-001	FHT-EX®45TTM Standard Mounting Tube w/o Rack	1
	EX-2-357-001	FHT-EX®45TTM Machine Torch Lead Replacement 15m Lead/TCS13	1	13.	EX-5-431-050	O-Ring (fitted on the torch body)	2
3.	EX-5-318-001	TCS Plug Spring Strain Relief	1	14.	EX-5-372-005	Torch Mounting Screws Kit (incl. 3 screws)	1
4.	EX-0-325-015	TCS Clam Shell Screw Kit (incl. 4 screws)	1	15.	EX-5-372-010	Cathode Mounting Kit	1
5.	EX-0-325-002	TCS Clam Shell Upper	1	16.	EX-0-321-003	Latch w/Key Assembly	1
6.	EX-0-325-001	TCS Clam Shell Lower	1				

Last update of this page: 09/06/2021. See Revision history for details.

HAND / MACHINE TORCH CONSUMABLES



Item	Part No.	Description	Pcs	Item	Part No.	Description	Pcs
1.	EX-2-401-201	Electrode	5	7.	EX-2-419-202	Gouging Shield	1
2.	EX-2-404-201	Swirl ring	1	8.	EX-2-421-201	Machine Shield	1
3.	EX-2-409-201	Nozzle	5	9.	EX-2-423-211	Deflector	1
4.	EX-2-409-202	Gouging nozzle	5	10.	EX-2-428-011	IHS Ohmic Clip	1
5.	EX-2-415-201	Retaining Cap	1	11.	EX-2-419-201	Hand (contact) Shield	1
6.	EX-2-415-202	Retaining Cap w/IHS Tab	1				

* IN COUNTRIES FOLLOWING CE STANDARDS, UNSHIELDED CONSUMABLE CONFIGURATION MAY ONLY BE USED IN MECHANIZED TORCH APPLICATIONS.

Last update of this page: 09/06/2021. See Revision history for details.

EX-TRAFIRE[®] 55SD

**BEST IN CLASS
PLASMA CUTTING SYSTEM.**



Last update of this page: 09/06/2021. See Revision history for details.

EX-TRAFIRE® 55SD



SIMPLE OPERATION



- + Intuitive control
- + Protected filter regulator
- + Engineered for professional applications

HIGHEST APPLICATION FLEXIBILITY



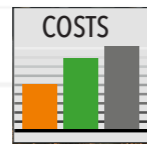
- + Plate thicknesses up to 30 mm +
- + Lightweight, exceptionally portable
- + TCS quick change flexible torch packages
- + Suitable for generator use

EX-TRA PERFORMANCE



- + Cutting, gouging, grid mode
- + Exact cuts
- + High duty cycle

BEST COST-EFFECTIVENESS



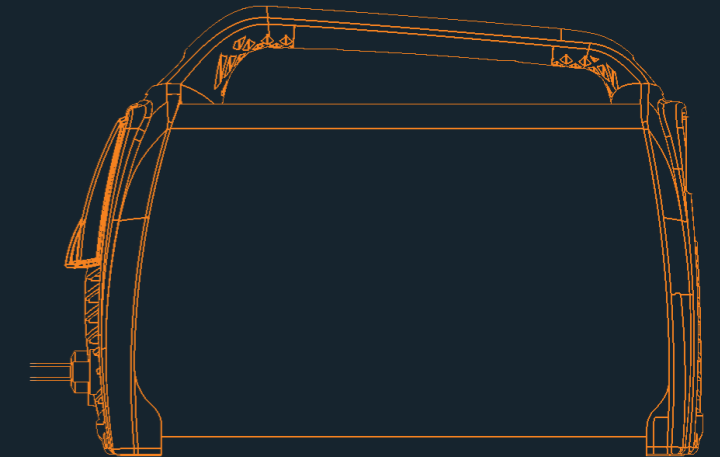
- + Low investment for high performance
- + Enhanced consumable lifetime
- + Reduced costs of ownership

Last update of this page: 09/06/2021. See Revision history for details.

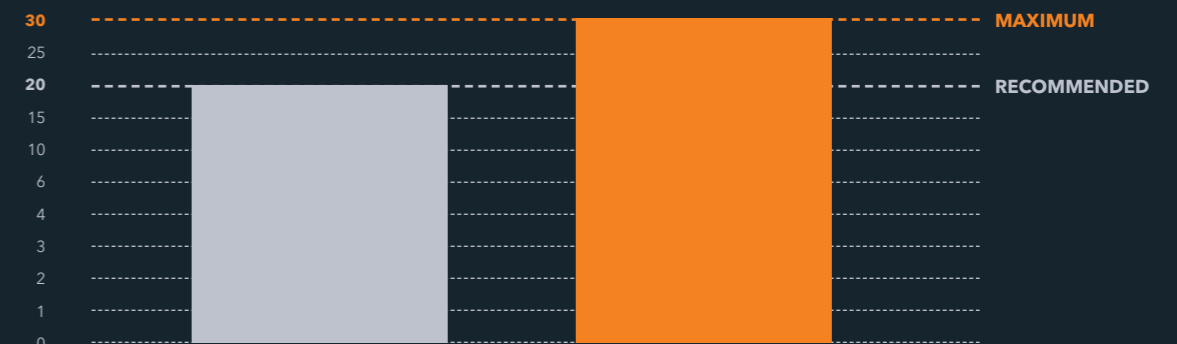
EX-TRAFIRE® 55SD

SPECIFICATIONS

- AMPS [A] 30-55
- INPUT VOLTAGE [VAC] CE 3x400 VAC ± 15 %
- PLASMA GAS COMPRESSED AIR
- CERTIFICATION CE, C-TICK, CCC
- MODES CUTTING / GRID CUTTING / GOUGING
- FREQUENCY [Hz] 50/60
- MAXIMUM INPUT POWER [kVA] 13.7 kVA @ 3x400 VAC
- OUTPUT VOLTAGE [VDC] 170 V @ 3x400 VAC
- DUTY CYCLE @ 40 °C 50 % @ 55 A, 100 % @ 41 A
- DIMENSION (l x h x w) [mm] 469x228x177
- WEIGHT [kg] 11.8
- RECOMMENDED CUTTING CAPACITY [mm] 20
- SEVERANCE CUTTING CAPACITY [mm] 30
- PIERCING CUTTING CAPACITY [mm] 20
- AIR FLOW @ [lpm/bar] 100 @ 5,2
- MAXIMUM INPUT PRESSURE [bar/psi] 7/101
- PROTECTION LEVEL IP23S
- INSULATION CLASS H/F
- CNC INTERFACE OPTIONAL
- INDUSTRY 4.0 NO
- TYPE OF TORCH FHT-EX® 105RTX H/M



MILD STEEL CUTTING CAPACITY IN MILLIMETRES



COMPARISON WITH COMPETITIVE PLASMA CUTTING MACHINES

EX-TRAFIRE® 55SD IS THE MOST POWERFUL SYSTEM IN IT'S CLASS.



Last update of this page: 09/06/2021. See Revision history for details.

EX-TRAFIRE® 55SD

ORDERING INFORMATION

Description	Length	Part No.
MANUAL PLASMA CUTTING SYSTEMS		
EX-TRAFIRE®55SD/CE/3x400 V Hand System/FHT-EX®105RTXH Torch 8m/H Starter Kit	8 m	EX-3-010-034
EX-TRAFIRE®55SD/CE/3x400 V Hand System/FHT-EX®105RTXH Torch 15m/H Starter Kit	15 m	EX-3-010-035
MECHANIZED PLASMA CUTTING SYSTEMS		
EX-TRAFIRE®55SD/CE/3x400 V M System/FHT-EX®105RTXM-NR Torch 8m/M Starter Kit	8 m	EX-3-011-030
EX-TRAFIRE®55SD/CE/3x400 V M System/FHT-EX®105RTXM-NR Torch 15m/M Starter Kit	15 m	EX-3-011-031
PLASMA POWER SUPPLY UNITS		
EX-TRAFIRE®55SD/CE/3x400 V power supply unit (Fully-equipped*)		EX-3-001-001

* Fully-equipped=CNC interface & Serial interfaceport (CAN bus)

AVAILABLE CONSUMABLE KITS

Description	Pcs	Part No.
Hand Torch Consumable Kit 55/65 A	1	EX-3-443-001
Machine Torch Consumable Kit 55/65 A	1	EX-3-444-001

ACCESSORIES

Description	Pcs	Part No.
DN 7.2 ES Quick Connect Plug with female thread G 1/4"	1	EX-0-802-000
DN 7.2 ES Quick Connect Plug with male thread G 1/4"	1	EX-0-802-001
DN 7.2 ES Quick Connect Coupling with male thread G 1/4"	1	EX-0-802-002
Grease 25 ml	1	EX-0-805-001
Filter-EX Compressed Air Filter	1	EX-0-804-001
Filter-EX Air Filter Cartridge	8	EX-0-804-002

Last update of this page: 31/01/2022. See Revision history for details.

EX-TRAFIRE® 55SD



FRONT VIEW



BACK VIEW



SIDE VIEW

Last update of this page: 09/06/2021. See Revision history for details.

EX-TRAFIRE[®] 75SD

ENGINEERED FOR ENDURANCE PLASMA CUTTING SYSTEM.



Last update of this page: 09/06/2021. See Revision history for details.

EX-TRAFIRE® 75SD



SIMPLE OPERATION



- + Easy to read, blue LED display
- + Protected filter regulator, easy to adjust
- + Engineered for professionals

EX-TRA PERFORMANCE



- + Cutting, gouging, grid mode
- + Engineered especially for mechanised applications
- + 100 % duty cycle

HIGHEST APPLICATION FLEXIBILITY



- + Plate thicknesses up to 35 mm +
- + Powerful and lightweight
- + TCS quick change flexible torch packages
- + Suitable for generator use

BEST COST-EFFECTIVENESS



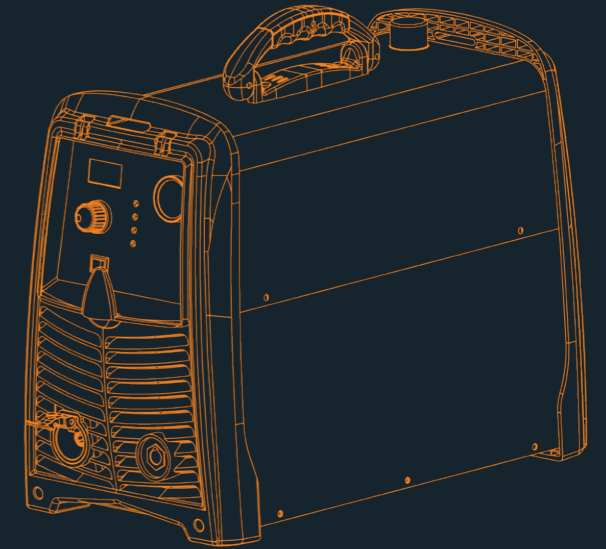
- + Reduced capital outlay
- + Enhanced consumable lifetime
- + Reduced costs of ownership

Last update of this page: 09/06/2021. See Revision history for details.

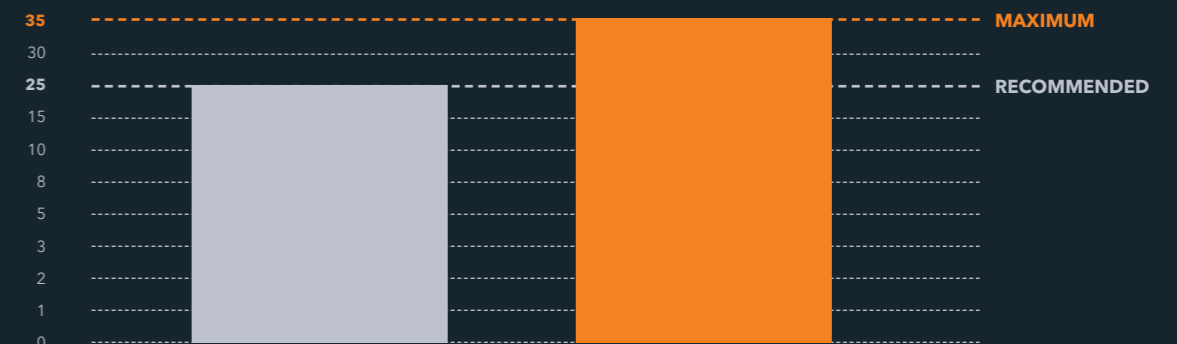
EX-TRAFIRE® 75SD

SPECIFICATIONS

- AMPS [A] 30-75
- INPUT VOLTAGE [VAC] 3×400 VAC ± 15 %
- PLASMA GAS COMPRESSED AIR
- CERTIFICATION CE, C-TICK, CCC
- MODES CUTTING / GOUGING / GRID CUTTING
- FREQUENCY [Hz] 50/60
- MAXIMUM INPUT POWER [kVA] 17.6 kVA @ 3X400 VAC
- OUTPUT VOLTAGE [VDC] 170 V (EXTRA-BOOST 220 V)
- DUTY CYCLE @ 40 °C 100% @ 75 A
- DIMENSION (l × h × w) [mm] 560x400x265
- WEIGHT [kg] 24
- RECOMMENDED CUTTING CAPACITY [mm] 25
- SEVERANCE CUTTING CAPACITY [mm] 35
- PIERCING CUTTING CAPACITY [mm] 20
- AIR FLOW @ [lpm/bar] 110 @ 5.2
- MAXIMUM INPUT PRESSURE [bar/psi] 10/145
- PROTECTION LEVEL IP23S
- INSULATION CLASS H/F
- CNC INTERFACE OPTIONAL
- INDUSTRY 4.0 NO
- TYPE OF TORCH FHT-EX® 105RTX H/M



MILD STEEL CUTTING CAPACITY IN MILLIMETRES



COMPARISON WITH COMPETITIVE PLASMA CUTTING MACHINES

EX-TRAFIRE® 75SD IS THE MOST POWERFUL SYSTEM IN IT'S CLASS.



Last update of this page: 09/06/2021. See Revision history for details.

EX-TRAFIRE® 75SD

ORDERING INFORMATION

Description	Length	Part No.
MANUAL PLASMA CUTTING SYSTEMS		
EX-TRAFIRE®75SD/CE/3x400 V Hand System/FHT-EX®105RTXH Torch 8m/H Starter Kit	8 m	EX-4-010-041
EX-TRAFIRE®75SD/CE/3x400 V Hand System/FHT-EX®105RTXH Torch 15m/H Starter Kit	15 m	EX-4-010-042
MECHANIZED PLASMA CUTTING SYSTEMS		
EX-TRAFIRE®75SD/CE/3x400 V M System/FHT-EX®105RTXM-NR Torch 8m/M Starter Kit	8 m	EX-4-011-030
EX-TRAFIRE®75SD/CE/3x400 V M System/FHT-EX®105RTXM-NR Torch 15m/M Starter Kit	15 m	EX-4-011-031
PLASMA POWER SUPPLY UNITS		
EX-TRAFIRE®75SD/CE/3x400 V power supply unit (Fully-equipped*)		EX-4-001-004

* Fully-equipped=CNC interface & Serial interfaceport (CAN bus)

AVAILABLE CONSUMABLE KITS

Description	Pcs	Part No.
Hand Torch Consumable Kit 55/65 A	1	EX-3-443-001
Machine Torch Consumable Kit 55/65 A	1	EX-3-444-001
Hand Torch Consumable Kit 75/85 A	1	EX-4-443-001
Machine Torch Consumable Kit 75/85 A	1	EX-4-444-001

ACCESSORIES

Description	Pcs	Part No.
DN 7.2 ES Quick Connect Plug with female thread G 1/4"	1	EX-0-802-000
DN 7.2 ES Quick Connect Plug with male thread G 1/4"	1	EX-0-802-001
DN 7.2 ES Quick Connect Coupling with male thread G 1/4"	1	EX-0-802-002
Grease 25 ml	1	EX-0-805-001
Filter-EX Compressed Air Filter	1	EX-0-804-001
Filter-EX Air Filter Cartridge	8	EX-0-804-002

Last update of this page: 31/01/2022. See Revision history for details.

EX-TRAFIRE® 75SD



FRONT VIEW



BACK VIEW



SIDE VIEW

Last update of this page: 09/06/2021. See Revision history for details.

EX-TRAFIRE[®]100SD

**BUILT FOR POWER
PLASMA CUTTING SYSTEM.**

Last update of this page: 09/06/2021. See Revision history for details.



EX-TRAFIRE® 100SD



SIMPLE OPERATION



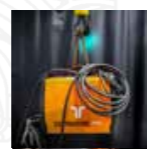
- + Intuitive control
- + Exceptionally robust
- + Engineered for demanding professionals

EX-TRA PERFORMANCE



- + High cutting speed
- + Precise cuts
- + Industry leading duty cycle

HIGHEST APPLICATION FLEXIBILITY



- + Plate thicknesses up to 50 mm +
- + Powerful and lightweight
- + TCS quick change flexible torch packages
- + Suitable for generator use

BEST COST-EFFECTIVENESS



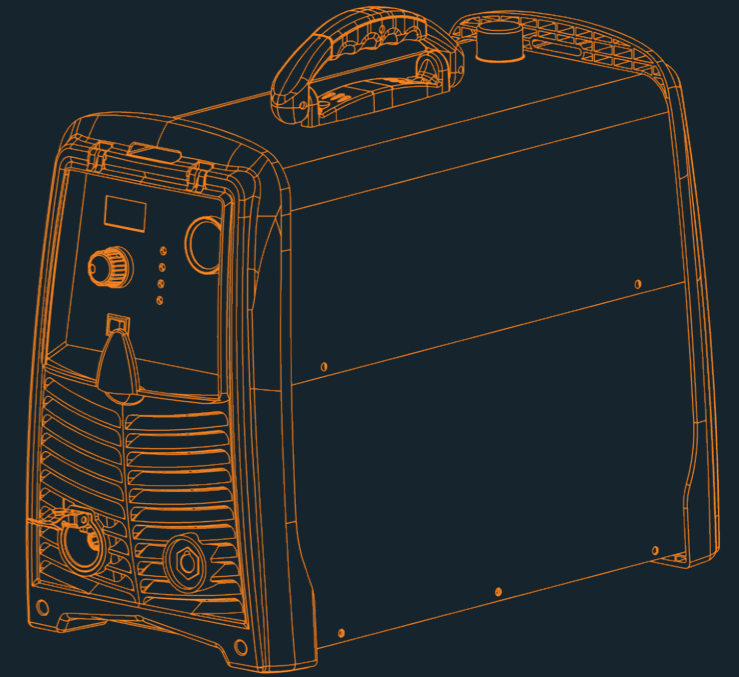
- + Reduced capital outlay
- + Longer consumable lifetime
- + Considerably reduced costs of ownership

Last update of this page: 09/06/2021. See Revision history for details.

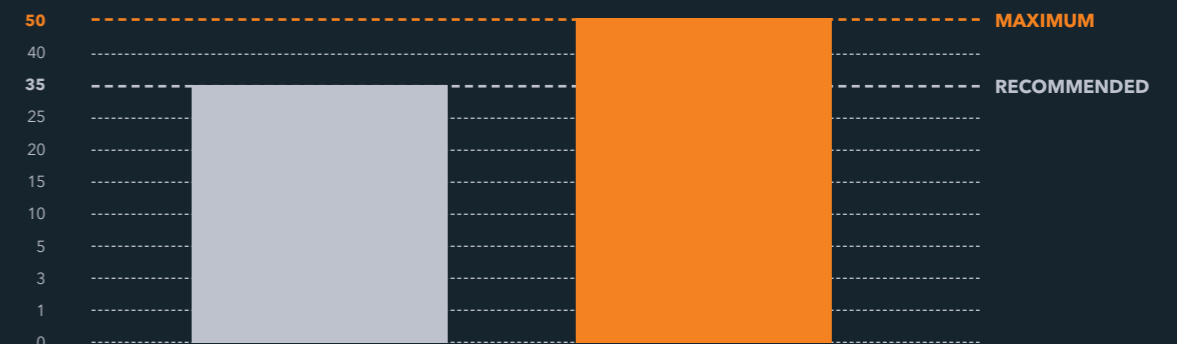
EX-TRAFIRE® 100SD

SPECIFICATIONS

- AMPS [A] 30-100
- INPUT VOLTAGE [VAC] 3x400 VAC ± 15 %
- PLASMA GAS COMPRESSED AIR
- CERTIFICATION CE, C-TICK, CCC
- MODES CUTTING / GOUGING / GRID CUTTING
- FREQUENCY [Hz] 50/60
- MAXIMUM INPUT POWER [kVA] 24.6
- OUTPUT VOLTAGE [VDC] 170 (EXTRA-BOOST 220 V)
- DUTY CYCLE @ 40 °C 50 % @ 100 A, 100 % @ 80 A
- DIMENSION (L x H x W) [mm] 560x400x265
- WEIGHT [KG] 24
- RECOMMENDED CUTTING CAPACITY [mm] 35
- SEVERANCE CUTTING CAPACITY [mm] 50
- PIERCING CUTTING CAPACITY [mm] 20
- AIR FLOW @ [lpm/bar] 135 @ 5.2
- MAXIMUM INPUT PRESSURE [bar/psi] 10/145
- PROTECTION LEVEL IP23S
- INSULATION CLASS H/F
- CNC INTERFACE OPTIONAL
- INDUSTRY 4.0 NO
- TYPE OF TORCH FHT-EX® 105RTX H/M

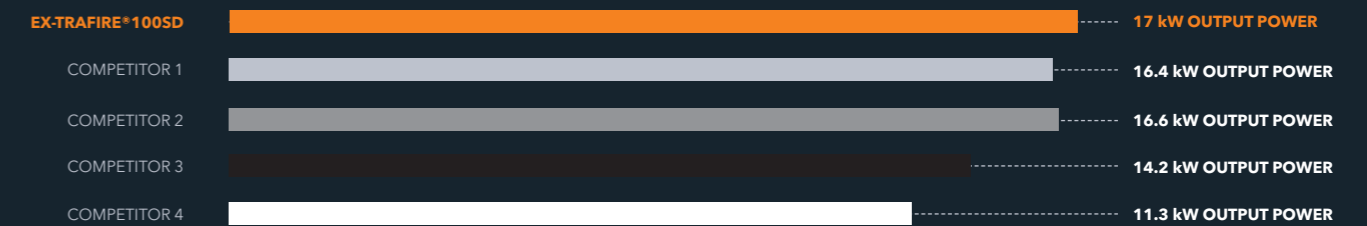


MILD STEEL CUTTING CAPACITY IN MILLIMETRES



COMPARISON WITH COMPETITIVE PLASMA CUTTING MACHINES

EX-TRAFIRE® 100SD IS THE MOST POWERFUL SYSTEM IN IT'S CLASS.



Last update of this page: 09/06/2021. See Revision history for details.

EX-TRAFIRE® 100SD

ORDERING INFORMATION

Description	Length	Part No.
MANUAL PLASMA CUTTING SYSTEMS		
EX-TRAFIRE®100SD/CE/3x400 V Hand System/FHT-EX®105RTXH Torch 8m/H Starter Kit	8 m	EX-5-010-033
EX-TRAFIRE®100SD/CE/3x400 V Hand System/FHT-EX®105RTXH Torch 15m/H Starter Kit	15 m	EX-5-010-034
MECHANIZED PLASMA CUTTING SYSTEMS		
EX-TRAFIRE®100SD/CE/3x400 V M System/FHT-EX®105RTXM-NR Torch 8m/M Starter Kit	8 m	EX-5-011-030
EX-TRAFIRE®100SD/CE/3x400 V M System/FHT-EX®105RTXM-NR Torch 15m/M Starter Kit	15 m	EX-5-011-031
PLASMA POWER SUPPLY UNITS		
EX-TRAFIRE®100SD/CE/3x400 V power supply unit (Fully-equipped*)		EX-5-001-003

* Fully-equipped=CNC interface & Serial interfaceport (CAN bus)

AVAILABLE CONSUMABLE KITS

Description	Pcs	Part No.
Hand Torch Consumable Kit 55/65 A	1	EX-3-443-001
Hand Torch Consumable Kit 75/85 A	1	EX-4-443-001
Hand Torch Consumable Kit 100/105 A	1	EX-5-443-001
Machine Torch Consumable Kit 55/65 A	1	EX-3-444-001
Machine Torch Consumable Kit 75/85 A	1	EX-4-444-001
Machine Torch Consumable Kit 100/105 A	1	EX-5-444-001

ACCESSORIES

Description	Pcs	Part No.
DN 7.2 ES Quick Connect Plug with female thread G 1/4"	1	EX-0-802-000
DN 7.2 ES Quick Connect Plug with male thread G 1/4"	1	EX-0-802-001
DN 7.2 ES Quick Connect Coupling with male thread G 1/4"	1	EX-0-802-002
Grease 25 ml	1	EX-0-805-001
Filter-EX Compressed Air Filter	1	EX-0-804-001
Filter-EX Air Filter Cartridge	8	EX-0-804-002

Last update of this page: 09/06/2021. See Revision history for details.

EX-TRAFIRE® 100SD



FRONT VIEW



BACK VIEW



SIDE VIEW

Last update of this page: 09/06/2021. See Revision history for details.

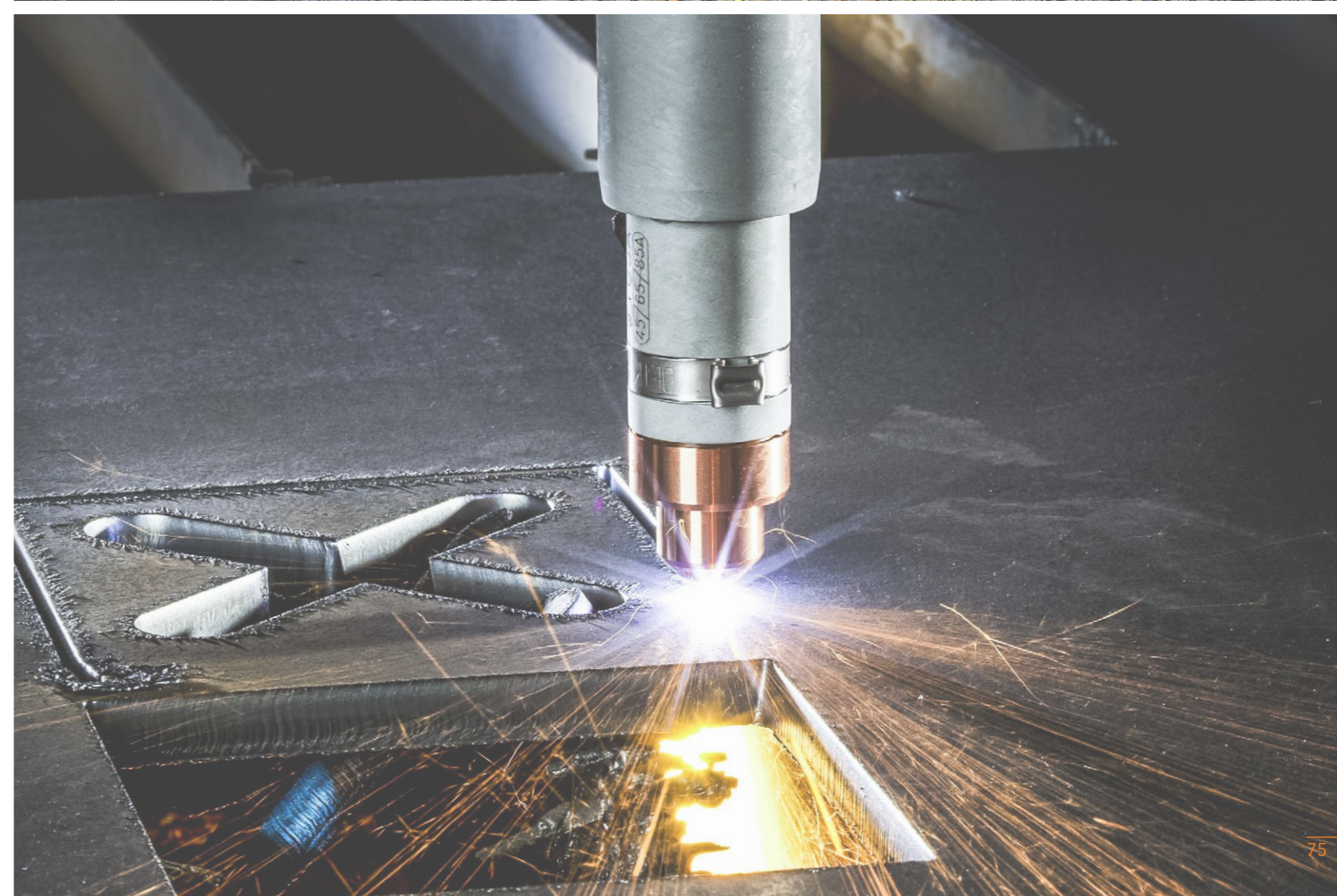
FHT-EX[®] 105RTX

HAND / MACHINE TORCHES AND CONSUMABLES

SUITABLE FOR EX-TRAFIRE[®] 55SD/75SD/100SD



Last update of this page: 09/06/2021. See Revision history for details.



FHT-EX® 105RTXH



**EXTREMELY FLEXIBLE
AND POWERFUL**



The extremely high-performant FHT-EX®105RTXH hand torch is ideal for meeting tough demands in continuous industrial operation. This torch is optimally designed for use with EX-TRAFIRE®55SD, 75SD and 100SD power supplies and are suitable for cutting, gouging and grid-cutting. Depending on the power supply used, they can cut plate thickness of up to 50 mm and more precisely and quickly.

Thanks to the Thermacut® Torch Connection System (TCS), changing the torch is a quick and easy process. These particularly powerful torches are the result of decades of experience in the field of plasma cutting. They feature an extremely robust and durable design in which all consumables can be replaced quickly and easily.

BENEFITS

- Extremely high-performance torches for handheld use
- Ergonomic handheld torches for safe and reliable holding and guiding in all positions
- Compact and particularly flexible for handheld applications, even in the case of tight radii
- 100 % duty cycle at 100/105 A, ideal for continuous industrial use
- Ideal for plate thicknesses of up to 50 mm and more with high power reserves
- Consumables with an extended lifetime
- Quick and tool-free replacement of consumables
- Piercing max. 20 mm
- Perfectly designed for use with EX-TRAFIRE®55SD, 75SD and 100SD power supplies

Last update of this page: 09/06/2021. See Revision history for details.

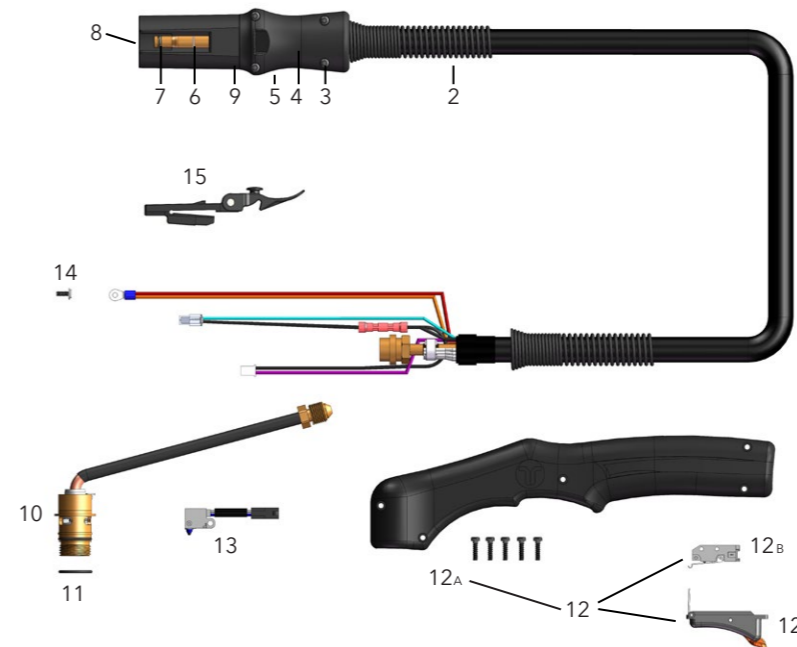
FHT-EX® 105RTXH

HAND TORCH ASSEMBLY AND TORCH COMPONENTS



Item	Part No.	Description	Pcs
1.	EX-5-140-002	FHT-EX®105RTXH Hand Torch w/o consumables w/8m Lead/TCS13	1
	EX-5-140-003	FHT-EX®105RTXH Hand Torch w/o consumables w/15m Lead/TCS13	1
2.	EX-0-321-003	Latch w/Key Assembly	1

LATCH WITH KEY IS NOT CONTENT OF TORCHES ABOVE. IF YOU NEED IT, YOU HAVE TO ORDER SEPARATELY.

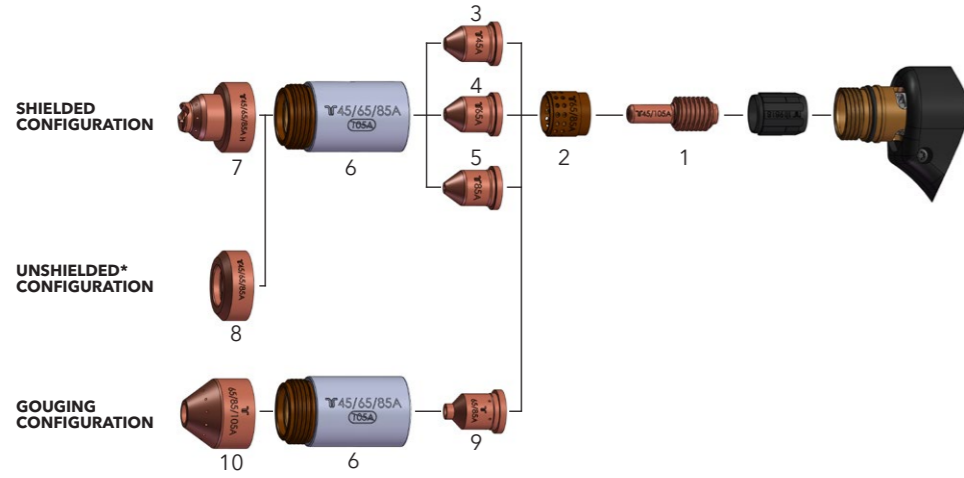


Item	Part No.	Description	Pcs	Item	Part No.	Description	Pcs
1.	EX-5-374-005	FHT-EX®105RTXH Hand Torch Lead Replacement 8m (26')/TCS13	1	10.	EX-5-302-030	Hand Torch Body Replacement Kit	1
1.	EX-5-374-006	FHT-EX®105RTXH Hand Torch Lead Replacement 15m (50')/TCS13	1	11.	EX-5-431-050	Torch Body O-Ring	2
2.	EX-5-318-001	TCS Plug Spring Stain Relief	1	12.	EX-5-314-030	Hand Torch Handle Replacement Kit	1
3.	EX-0-325-015	TCS Clam Shell Screw Kit (incl. 4 screws)	1	12a.	EX-5-308-030	Hand Torch Handle with Screws	1
4.	EX-0-325-002	TCS Clam Shell Upper	1	12b.	EX-5-313-030	Safety Trigger Micro-Switch	1
5.	EX-0-325-001	TCS Clam Shell Lower	1	12c.	EX-5-313-031	Safety Trigger	1
6.	EX-0-325-010	Retaining Ring (Outer circlip ring)	1	13.	EX-5-305-001	Cap Sensor Microswitch Assembly/Hand Torch	1
7.	EX-0-325-009	O-Ring (fitted in the TCS plug)	1	14.	EX-5-372-030	Pilot Cable Screw	1
8.	EX-0-325-005	Male Crimp Pin for TCS Plug	1	15.	EX-0-321-003	Latch w/Key Assembly	1
9.	EX-0-323-001	TCS13 Plug Body	1				

Last update of this page: 09/06/2021. See Revision history for details.

CONSUMABLES

HAND TORCH STANDARD CONSUMABLES - 45-85 A

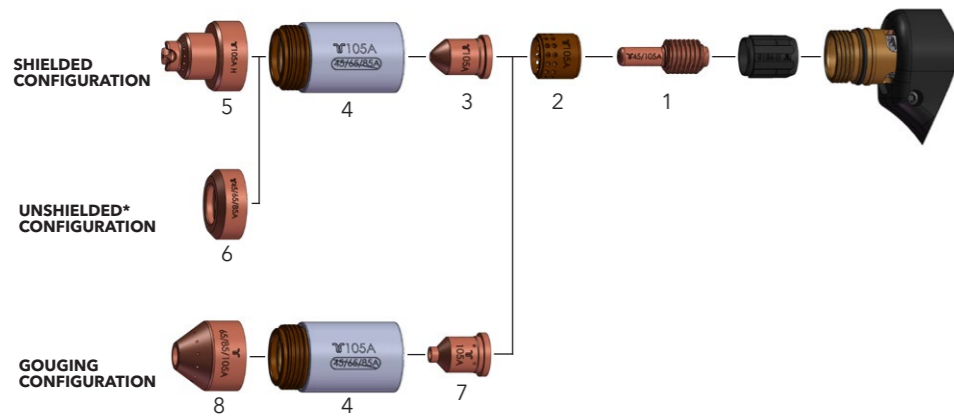


Item	Part No.	Description	Pcs	Item	Part No.	Description	Pcs
1.	EX-5-402-030	Electrode 45-105 A (5pcs package) **	1x5	6.	EX-5-415-030	Retaining Cap 45-85 A	1
2.	EX-5-404-031	Swirl Ring 45-85 A	1	7.	EX-5-419-030	Shield 45-85 A, Hand	1
3.	EX-5-410-036	Nozzle 45 A (5 pcs package) **	1x5	8.	EX-5-423-031	Deflector 45-105 A	1
4.	EX-5-410-037	Nozzle 55/65 A (5 pcs package) **	1x5	9.	EX-5-440-031	Nozzle 45-85 A, Gouging (5 pcs package) **	1x5
5.	EX-5-410-038	Nozzle 75/85 A (5 pcs package) **	1x5	10.	EX-5-440-030	Shield 45-105 A, Gouging	1

* IN COUNTRIES FOLLOWING CE STANDARDS, UNSHIELDED CONSUMABLE CONFIGURATION MAY ONLY BE USED IN MECHANIZED TORCH APPLICATIONS.

** THIS PART IS AVAILABLE IN 5 PCS SET ONLY

HAND TORCH STANDARD CONSUMABLES - 105 A



Item	Part No.	Description	Pcs	Item	Part No.	Description	Pcs
1.	EX-5-402-030	Electrode 45-105 A (5 pcs package) **	1x5	5.	EX-5-420-030	Shield 100/105 A, Hand	1
2.	EX-5-404-032	Swirl Ring 100/105 A	1	6.	EX-5-423-031	Deflector 45-105 A	1
3.	EX-5-410-039	Nozzle 100/105 A (5 pcs package) **	1x5	7.	EX-5-440-032	Nozzle 100/105 A, Gouging (5 pcs package) **	1x5
4.	EX-5-415-032	Retaining Cap 100/105 A	1	8.	EX-5-440-030	Shield 45-105 A, Gouging	1

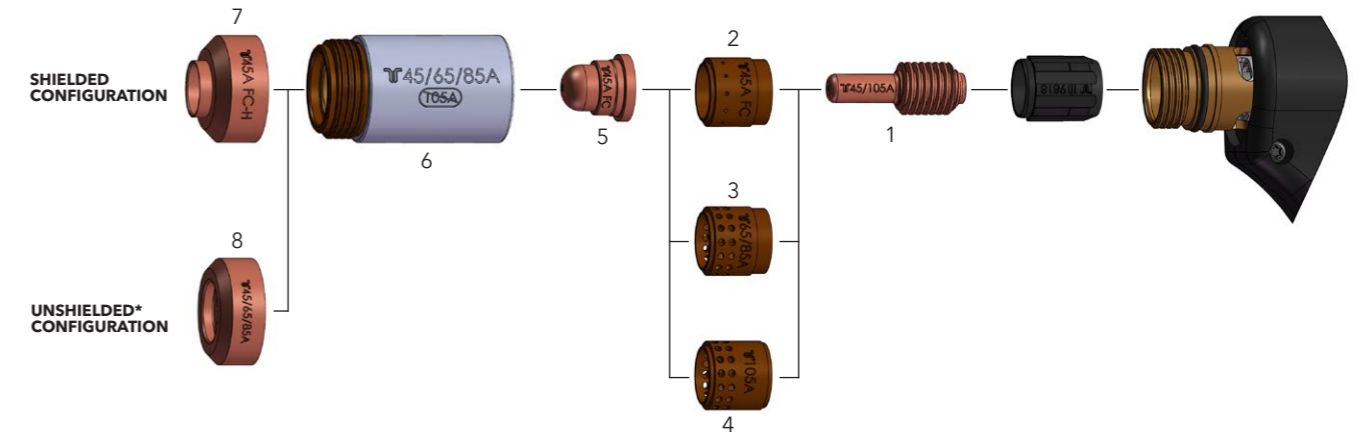
* IN COUNTRIES FOLLOWING CE STANDARDS, UNSHIELDED CONSUMABLE CONFIGURATION MAY ONLY BE USED IN MECHANIZED TORCH APPLICATIONS.

** THIS PART IS AVAILABLE IN 5 PCS SET ONLY

Last update of this page: 09/06/2021. See Revision history for details.

CONSUMABLES

HAND TORCH CONSUMABLES - SMOOTH CUT



Item	Part No.	Description	Pcs	Item	Part No.	Description	Pcs
1.	EX-5-402-030	Electrode 45-105 A (5 pcs package) **	1x5	5.	EX-5-410-035	Nozzle 45 A / SmoothCut (5 pcs package) **	1x5
2.	EX-5-404-030	Swirl Ring 45-105 A / SmoothCut	1	6.	EX-5-415-030	Retaining Cap 45-85 A	1
3.	EX-5-404-031	Swirl Ring 45-85 A	1	7.	EX-5-423-030	Deflector 45 A / SmoothCut	1
4.	EX-5-404-032	Swirl Ring 100/105 A	1	8.	EX-5-423-031	Deflector 45-105 A	1

* IN COUNTRIES FOLLOWING CE STANDARDS, UNSHIELDED CONSUMABLE CONFIGURATION MAY ONLY BE USED IN MECHANIZED TORCH APPLICATIONS.

** THIS PART IS AVAILABLE IN 5 PCS SET ONLY

Last update of this page: 15/12/2021. See Revision history for details.

FHT-EX® 105RTXM



**DESIGNED FOR
ACCURACY AND DURABILITY**



The extremely high-performant FHT-EX®105RTXM machine torches are ideal for meeting tough demands in continuous industrial operation. These torches are optimally designed for use with EX-TRAFIRE®55SD, 75SD and 100SD power supplies and are suitable for cutting, gouging and grid-cutting. Depending on the power supply used, they can cut plate thickness of up to 50 mm and more precisely and quickly.

Thanks to the Thermacut® Torch Connection System (TCS), changing the torch is a quick and easy process. These particularly powerful torches are the result of decades of experience in the field of plasma cutting. They feature an extremely robust and durable design in which all consumables can be replaced quickly and easily.

BENEFITS

- Extremely high-performance torches for mechanised applications
- 100 % duty cycle at 100/1050 A, ideal for continuous industrial use
- Ideal for plate thicknesses of up to 50 mm and more with high power reserves
- Consumables with an extended lifetime
- Quick and tool-free replacement of consumables
- Piercing max. 20 mm
- Perfectly designed for use with EX-TRAFIRE®55SD, 75SD and 100SD power supplies

Last update of this page: 09/06/2021. See Revision history for details.

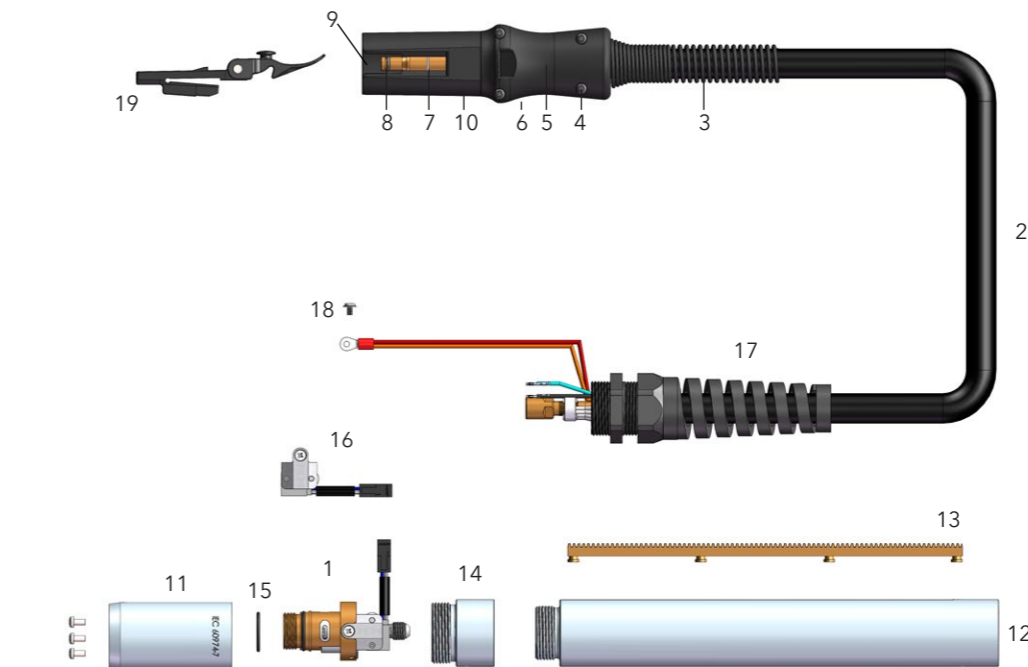
FHT-EX® 105RTXM

MACHINE TORCH ASSEMBLY AND TORCH COMPONENTS



Item	Part No.	Description
1.	EX-5-240-001	FHT-EX®105RTXM Machine Torch w/o Rack Assy-w/o consumables w/8m Lead/ TCS13
	EX-5-240-005	FHT-EX®105RTXM Machine Torch w/o Rack Assy-w/o consumables w/15m Lead/ TCS13
2.	EX-5-240-007	FHT-EX®105RTXSM Short (ROBO) Machine Torch Assy-w/o consumables w/8m Lead/TCS13
	EX-5-240-008	FHT-EX®105RTXSM Short (ROBO) Machine Torch Assy-w/o consumables w/15m Lead/TCS13
3.	EX-0-321-003	Latch w/Key Assembly

LATCH WITH KEY IS NOT CONTENT OF TORCHES ABOVE. IF YOU NEED IT, YOU HAVE TO ORDER SEPARATELY.

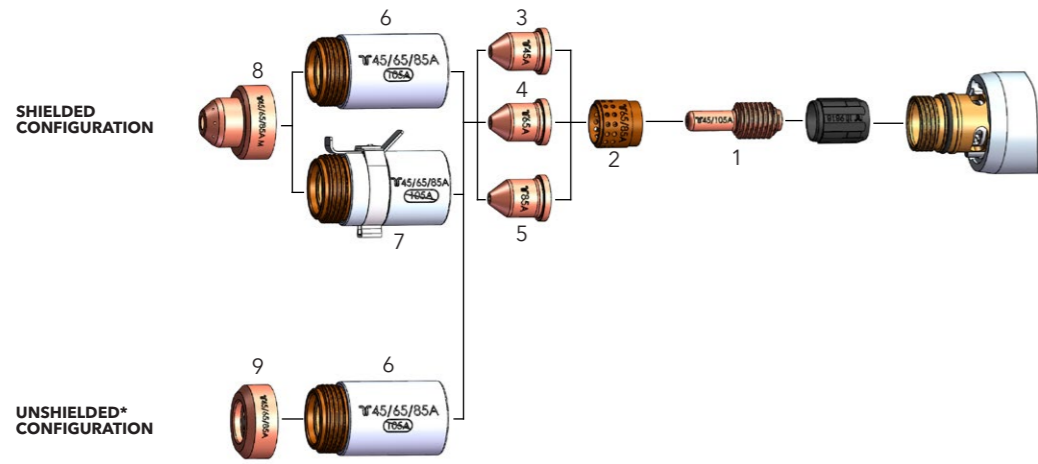


Item	Part No.	Description	Pcs	Item	Part No.	Description	Pcs
1.	EX-5-303-030	Machine Torch Body Replacement Kit	1	10.	EX-0-323-001	TCS13 Plug Body	1
2.	EX-5-375-001	FHT-EX®105RTXM Machine Torch Lead Replacement 8m (26')/TCS13	1	11.	EX-5-306-030	Torch Mounting Sleeve (incl. 3 screws)	1
2.	EX-5-375-002	FHT-EX®105RTXM Machine Torch Lead Replacement 15m (50')/TCS13	1	12.	EX-5-306-032	Standard Mounting Tube w/o Rack	1
3.	EX-5-318-001	TCS Plug Spring Strain Relief	1	13.	EX-5-306-033	Gear Rack	1
4.	EX-0-325-015	TCS Clam Shell Screw Kit (incl. 4 screws)	1	14.	EX-5-306-031	Standard Mounting Tube Reduction Nut	1
5.	EX-0-325-002	TCS Clam Shell Upper	1	15.	EX-5-431-050	Torch Body O-Ring	1
6.	EX-0-325-001	TCS Clam Shell Lower	1	16.	EX-5-304-030	Cap Sensor Replacement Kit with Screws /Machine Torch	1
7.	EX-0-325-010	Retaining Ring (Outer circlip ring)	1	17.	EX-5-317-021	Machine Torch Strain Relief	1
8.	EX-0-325-009	O-Ring (fitted in the TCS plug)	1	18.	EX-5-372-030	Pilot Cable Screw	1
9.	EX-0-325-005	Male Crimp Pin for TCS Plug	1	19.	EX-0-321-003	Latch w/Key Assembly	1

Last update of this page: 11/05/2022. See Revision history for details.

CONSUMABLES

MACHINE TORCH STANDARD CONSUMABLES - 45-85 A

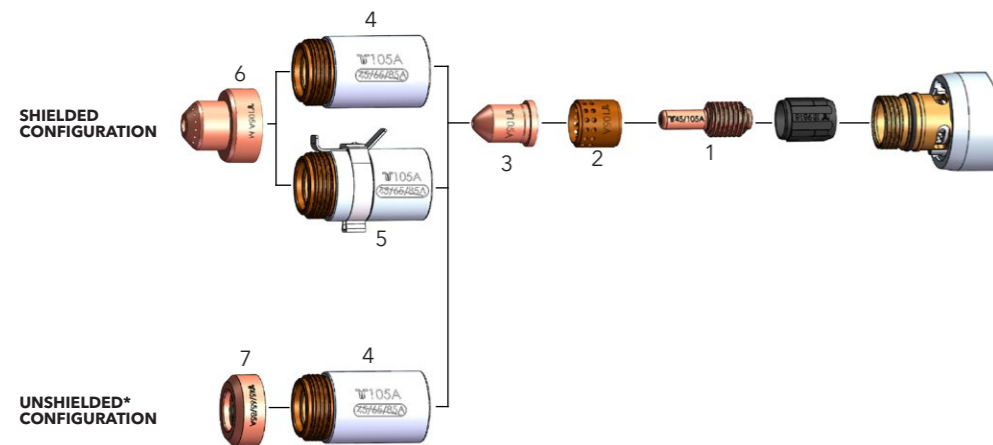


Item	Part No.	Description	Pcs	Item	Part No.	Description	Pcs
1.	EX-5-402-030	Electrode 45-105 A (5 pcs package) **	1x5	6.	EX-5-415-030	Retaining Cap 45-85 A	1
2.	EX-5-404-031	Swirl Ring 45-85 A	1	7.	EX-5-415-031	Retaining Cap 45-85 A, IHS Tab	1
3.	EX-5-410-036	Nozzle 45 A	5	8.	EX-5-421-031	Shield 45-85 A, Machine	1
4.	EX-5-410-037	Nozzle 55/65 A (5 pcs package) **	1x5	9.	EX-5-423-031	Deflector 45-105 A	1
5.	EX-5-410-038	Nozzle 75/85 A (5 pcs package) **	1x5				

* IN COUNTRIES FOLLOWING CE STANDARDS, UNSHIELDED CONSUMABLE CONFIGURATION MAY ONLY BE USED IN MECHANIZED TORCH APPLICATIONS.

** THIS PART IS AVAILABLE IN 5 PCS SET ONLY

MACHINE TORCH STANDARD CONSUMABLES - 100/105 A



Item	Part No.	Description	Pcs	Item	Part No.	Description	Pcs
1.	EX-5-402-030	Electrode 45-105 A (5 pcs package) **	1x5	5.	EX-5-415-033	Retaining Cap 100/105 A, IHS Tab	1
2.	EX-5-404-032	Swirl Ring 100/105 A	1	6.	EX-5-422-030	Shield 100/105 A, Machine	1
3.	EX-5-410-039	Nozzle 100/105 A (5 pcs package) **	1x5	7.	EX-5-423-031	Deflector 45-105 A	1
4.	EX-5-415-032	Retaining Cap 100/105 A	1				

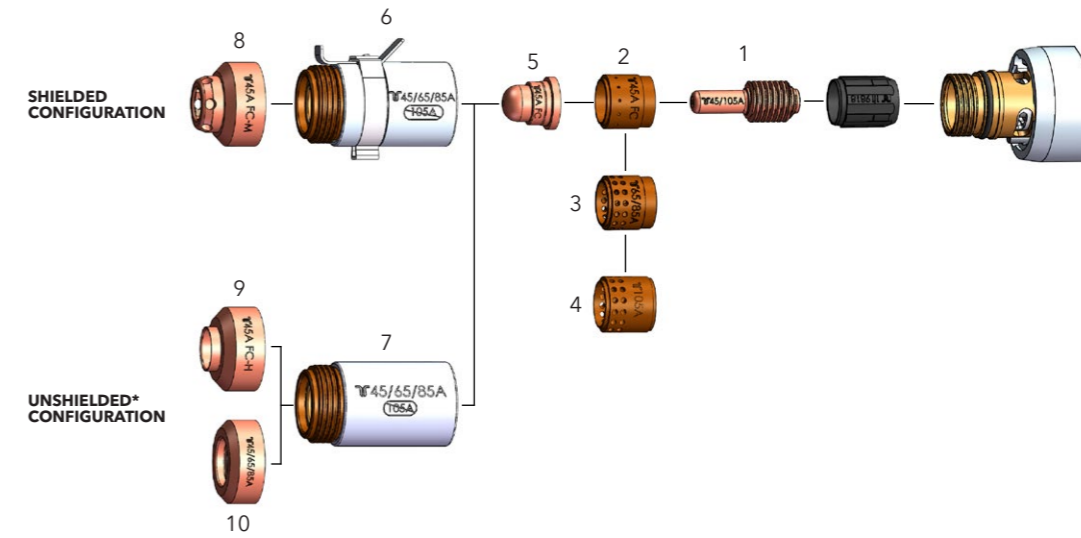
* IN COUNTRIES FOLLOWING CE STANDARDS, UNSHIELDED CONSUMABLE CONFIGURATION MAY ONLY BE USED IN MECHANIZED TORCH APPLICATIONS.

** THIS PART IS AVAILABLE IN 5 PCS SET ONLY

Last update of this page: 09/06/2021. See Revision history for details.

CONSUMABLES

MACHINE TORCH CONSUMABLES - SMOOTH CUT



Item	Part No.	Description	Pcs	Item	Part No.	Description	Pcs
1.	EX-5-402-030	Electrode 45-105 A (5 pcs package) **	1x5	6.	EX-5-415-031	Retaining Cap 45-85 A, IHS Tab	1
2.	EX-5-404-030	Swirl Ring 45-105 A / SmoothCut	1	7.	EX-5-415-030	Retaining Cap 45-85 A	1
3.	EX-5-404-031	Swirl Ring 45-85 A	1	8.	EX-5-421-030	Shield 45 A, IHS, SmoothCut	1
4.	EX-5-404-032	Swirl Ring 100/105 A	1	9.	EX-5-423-030	Deflector 45 A / SmoothCut	1
5.	EX-5-410-035	Nozzle 45 A / SmoothCut (5 pcs package) **	1x5	10.	EX-5-423-031	Deflector 45-105 A	1

* IN COUNTRIES FOLLOWING CE STANDARDS, UNSHIELDED CONSUMABLE CONFIGURATION MAY ONLY BE USED IN MECHANIZED TORCH APPLICATIONS.

** THIS PART IS AVAILABLE IN 5 PCS SET ONLY

Last update of this page: 15/12/2021. See Revision history for details.

ACCESSORIES



Item	Part No.	Ref. No.	Description	Pcs	Item	Part No.	Ref. No.	Description	Pcs
1.	T-12452	EX-0-804-001	Filter-EX Compressed Air Filter	1	7.	EX-2-801-001	EX-2-801-001	Circle Cut. Guide Kit for FHT-EX®30/40H	1
2.	T-12453	EX-0-804-002	Filter-EX Air Filter Cartridge	8	7.	EX-5-801-002	EX-5-801-002	Circle cutting guide kit FHT-EX®105RTX/45TT	1
3.	EX-0-802-000	EX-0-802-000	Quick Connect Plug with female thread G 1/4"	1	8.	N-21811	EX-0-806-001	THERMACUT® Cutting Gloves	1
4.	EX-0-802-001	EX-0-802-001	Quick Connect Plug with male thread G 1/4"	1	9.	EX-0-803-001	EX-0-803-001	CNC Interface 14-pin Plug Kit	1
5.	EX-0-802-002	EX-0-802-002	Quick Connect Coupling with male thread G 1/4"	1	10.	EX-0-803-004	EX-0-803-004	CNC Interface connection lead 6 m	1
6.	T-0994	EX-0-805-001	Silicone Lubricant 25 ml	1	11.	EX-5-801-003	EX-5-801-003	Bevel cutting guide kit FHT-EX®105RTX/105TTH/45TTH	1

REVISION HISTORY

Section FHT-EX®105RTX - Revision on PAGES 79, 83 - 15/12/2021 - Change of the name FinalLine (FL) to Smooth Cut (SC).

Section EX-TRAFIRE®45HD - FHT-EX®45TTM - CONSUMABLES - Change on page 17 - 10/01/2022 - Added items for marking EX-2-445-001 ; EX-2-445-002

Section EX-TRAFIRE®30H - Revision on PAGE 30 - 24/01/2022 - Added symbol "OD" to the Item section EX-2-302-009

Section EX-TRAFIRE®40SD - Revision on PAGE 40 - 24/01/2022 - Added symbol "OD" to the Item section EX-2-328-001, EX-2-331-002, EX-2-329-003, EX-2-336-004, EX-2-302-009 ; Revision on PAGE 42 - 24/01/2022 - Added symbol "OD" to the Item section EX-2-326-005, EX-2-352-006, EX-2-327-007.

Section EX-TRAFIRE®55SD - Revision on PAGE 59 - 31/01/2022 - line INPUT VOLTAGE - Removed value 3x220 VAC ± 15 % ; line MAXIMUM INPUT POWER - Removed value 11,9 kVA @ 3x220 VAC ; line OUTPUT VOLTAGE - Removed value 140 V @ 3x220 VAC ; Revision on PAGE 60 - 31/01/2022 - Removed parts EX-3-010-036, EX-3-010-037, EX-3-011-032, EX-3-011-033, EX-3-001-005

Section EX-TRAFIRE®75SD - Revision on PAGE 65 - 31/01/2022 - line INPUT VOLTAGE - Removed value 3x220 VAC ± 15 % ; line MAXIMUM INPUT POWER - Removed value 14,71 kVA @ 3x220 VAC ; Revision on PAGE 66 - 31/01/2022 - Removed parts EX-4-010-043, EX-4-010-044, EX-4-011-032, EX-4-011-033, EX-4-001-005

Section EX-TRAFIRE®30H - Revision on PAGE 30 - 11/05/2022 - Removed symbol "OD" on the Item section EX-2-302-009

Section EX-TRAFIRE®40SD - Revision on PAGE 40 - 11/05/2022 - Removed symbol "OD" on the Item section EX-2-302-009

Section FHT-EX®105RTX - Revision on PAGE 81 - 11/05/2022 - Short ROBO torches added into table

Section ACCESORIES - Revision on PAGE 84 - 11/05/2022 - Bevel cutting guide added to the picture and table

Last update of this page: 11/05/2022. See Revision history for details.

THINK FRESH. CUT ORANGE.

THERMACUT® comes up with fresh ideas for cutting technology.
Benefit from innovative, reliable, powerful and highly efficient cutting solutions.



Discover the other plasma cutting systems within the EX-TRAFIRE® SD family and our wide range of cutting solutions at www.ex-trafire.com.

THERMACUT, k.s.
Sokolovská 574, Mařatice
68601 Uherské Hradiště
Czech Republic

sales@thermacut.cz
WWW.THERMACUT.COM

follow
#EXTRAFIRE

