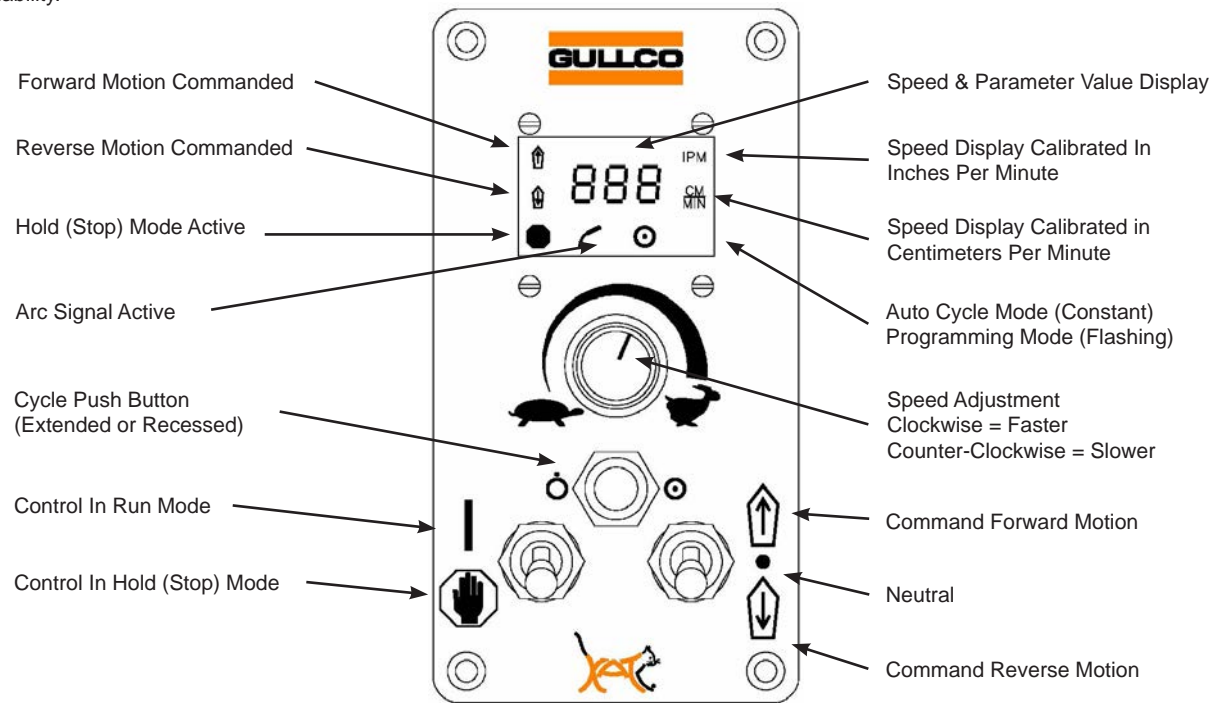


The Gullco Standard Platform (GSP) range of controls have switching for forward / neutral / reverse, run / stop, Manual / Auto & program variable increment/decrement (where applicable) and a rotary encoder for speed control. This micro-processor based, 24 volt DC motor control can be supplied to provide a variety of "optional" functions such as indexing, weld oscillation and auto-weld. The selected "option" function and carriage travel speed/ direction are directed by a single GSP control. This ensures high levels of accuracy, quality and reliability.



PARTNUMBERCONFIGURATION

Select a option and voltage to configure a KAT® specifically suited to your needs

GK- -300-D

MODEL OPTIONS	
MODEL	DESCRIPTION
W	Welding Package
AW	Auto-weld
L	Linear Oscillator
R	Radial Oscillator
PC	Plasma Cutting
FC	Flame Cutting



WELDING AND CUTTING CARRIAGE - KAT® FOR RIGID & SEMI RIGID TRACK



The Gullco KAT® is used throughout the world to automate a wide variety of welding and cutting operations. The KAT® is small and light yet robust with many features which include:

- Tool-less Setup, Adjustment & Operation
- Self-aligning Wheels (Easy Installation)
- Dynamic Dovetail Racking for versatile torch positioning
- Quick clutch mechanism
- OSHA Safety Orange
- Ingress Protection (Sealed Unit) including Conformal Coated Circuit Boards
- Energy Efficient
- Universal Compatibility to all welding power sources and wire feeders
- Torch holder memory for fast torch removal and accurate repositioning after cleaning
- Compatible with all existing rigid track and the new semi rigid track sections

THE MOST DURABLE, DYNAMIC, AND VERSATILE CARRIAGE IN THE INDUSTRY

GULLCO, KAT, KBM, MOGGY, KATBAK & SAM are registered trademarks of Gullco Enterprises Limited

Distributed by:

SPECIFICATIONS ARE SUBJECT TO CHANGE WITHOUT NOTICE. ALL DIMENSIONS ARE NOMINAL

GULLCO

CANADA - GULLCO INTERNATIONAL LIMITED
 Phone: 1-905-953-4140 Fax: 1-905-953-4138 e-mail: sales@gullco.com

U.S.A - GULLCO INTERNATIONAL INC.
 Phone: 1-440-439-8333 Fax: 1-234 808-4146 e-mail: ussales@gullco.com

EUROPE - GULLCO INTERNATIONAL (U.K.) LIMITED
 Phone: +44 1257-253579 Fax: +44 1257-254629 e-mail: uksales@gullco.com

AUSTRALIA - GULLCO INTERNATIONAL PTY LIMITED
 Phone: 61 (0)7 3348 5515 Fax: 61 (0)7 3348 5510 e-mail: ausales@gullco.com

INDIA - GULLCO INTERNATIONAL INDIA PVT LIMITED
 Phone: +91-20-2551-1433 Fax: +91-20-2551-1433 e-mail: indsales@gullco.com

CHINA - GULLCO INTERNATIONAL SHANGHAI LIMITED
 Phone: +8621-50460341 Fax: +8621-50463554 e-mail: c.zhang@gullco.com

SINGAPORE - GULLCO INTERNATIONAL LIMITED
 Phone: +65-9385-4468 e-mail: benny.lim@gullco.com

LATIN AMERICA - GULLCO INTERNATIONAL LIMITED
 Phone: 55-11-99485-1336 e-mail: rogerio.macedo@gullco.com

GERMANY - ms gmbh Melchior Schweißtechnik
 Phone: +49(0)173 5437722 Fax: +49(0)208 999 38-38 e-mail: christian.mertens@ms-gmbh.com



AUTOMATED WELDING SYSTEM KAT® 300 SERIES CARRIAGE

SPECIFICATIONS:

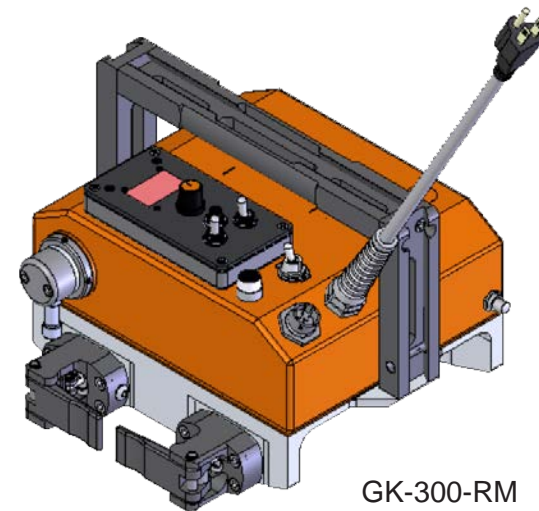
Weight: 17 lb (7.7 kg)

Speed Range: 2.5 - 83.1 cm/min (1 - 32.7 IPM)

Racking Weight: 9 lb (4 kg)

Power Requirements: 42 VAC, 115 VAC, 230 VAC
Models available.

Vertical Capacity: 56 lb (25.4 kg)

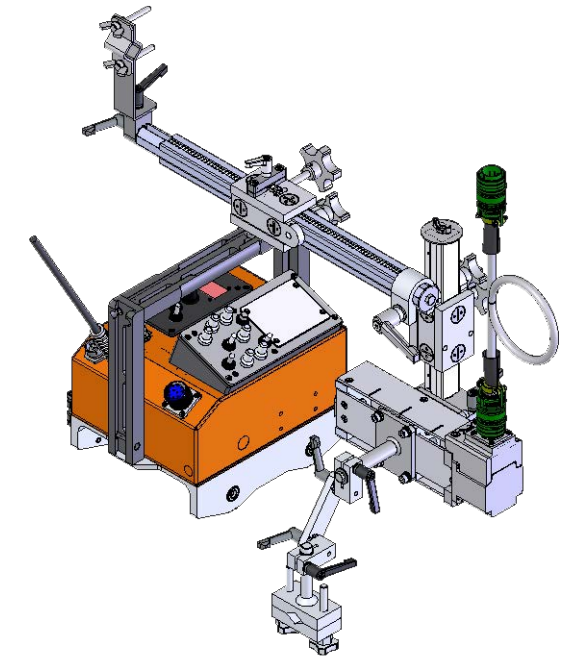


GK-300-RM

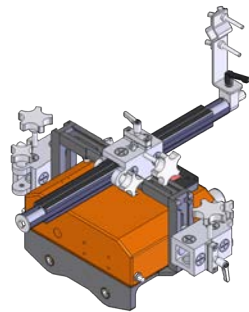
GK-L-300 KAT® Rugged Light Weight Carriage Linear Welding Oscillation Combination

Carriage Speed 1 - 32.7 IPM (2.5 - 83.1 cm/min)
Heavy duty quick action self-aligning wheels
combined with two track mounting paddled locks.
Accurate Carriage speed control by conformal coated
ingress protected 24 volt Gullco microprocessor.

Maximum load capacity 56 lb (25.4 kg) regardless
of weld position. With forward/stop/reverse switch,
high speed return, infinitely variable multi-turn speed
potentiometer and LED display. Oscillator control
provides Auto Arc Start , independent dwell at each
end and center of the 1.5" stroke, infinitely variable 0
to 5 seconds; oscillation speed potentiometer, speed
range 8 to 188 cycles per minute (16 to 376 passes
per minute). Weld oscillator head mounted on
infinitely variable dovetailed tool-less racking system.

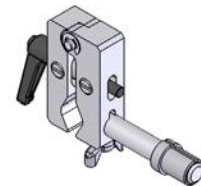


FEATURE RICH ENGINEERED DESIGN



DYNAMIC RACKING

Using a machined dovetail racking
system and locking rack box,
torch positioning is versatile and
adjustable. The rack box can be
positioned anywhere along the
racking and torch removal and
adjustment is simple.

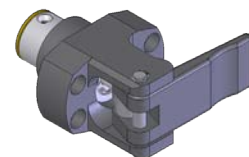


TORCHHOLDER MEMORY

The torch holder
has been designed
for quick and easy
removal of the torch
so that cleaning and
accurate repositioning
of the welding torch in
the optimal position is
simple and consistent.

SELF-ALIGNING WHEELS

Self-aligning wheels means the
carriage is mounted to the track
correctly and easily every time. This
ensures smooth carriage motion and
maximizes the life of the track.

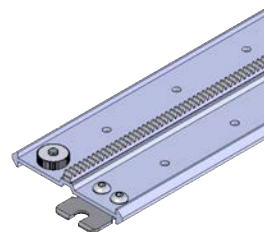


PADDLELOCKS

Quick installation
paddle locks provide
smooth transition of the
self-aligning wheels
onto the track.

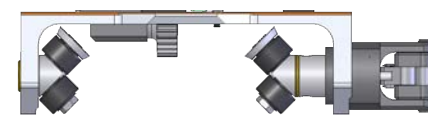
SEMI RIGID TRACK

Semi rigid track is made from
precision extruded aluminum and
a securely affixed steel rack. The
interchangeable end design enables
fast accurate joining of the track
sections and provides smooth
movement of the carriage along the
track in both flat and curved surfaces.
Flexibility to a minimum diameter of
24ft (7315.2mm) internal or external.



MACHINED UNDERCARRIAGE

Lightweight design engineered for optimal
setup times utilizing the self-aligning
wheels and paddle lock technology.



GK-R-300 KAT® Rugged Light Weight Carriage Radial Welding Oscillation Combination

Carriage Speed 1 - 32.7 IPM (2.5 - 83.1 cm/min)
Heavy duty quick action self-aligning wheels
combined with two track mounting paddled locks.
Accurate Carriage speed control by conformal coated
ingress protected 24 volt Gullco microprocessor.

Maximum load capacity 56 lb (25.4 kg) regardless
of weld position. With forward/stop/reverse switch,
high speed return, infinitely variable multi-turn speed
potentiometer and LED display. Oscillator control
provides Auto Arc Start , independent dwell at each
end and center of the 0.8 - 45° oscillation width
stroke, infinitely variable 0 to 5 seconds; oscillation
speed potentiometer, speed range 1° - 45° per
second. Weld oscillator head mounted on infinitely
variable dovetailed tool-less racking system.

