

# ***TRAILmate***

## **Desoto Classic & EZ Roll Regal Owner's Guide**



**DESOTO CLASSIC**

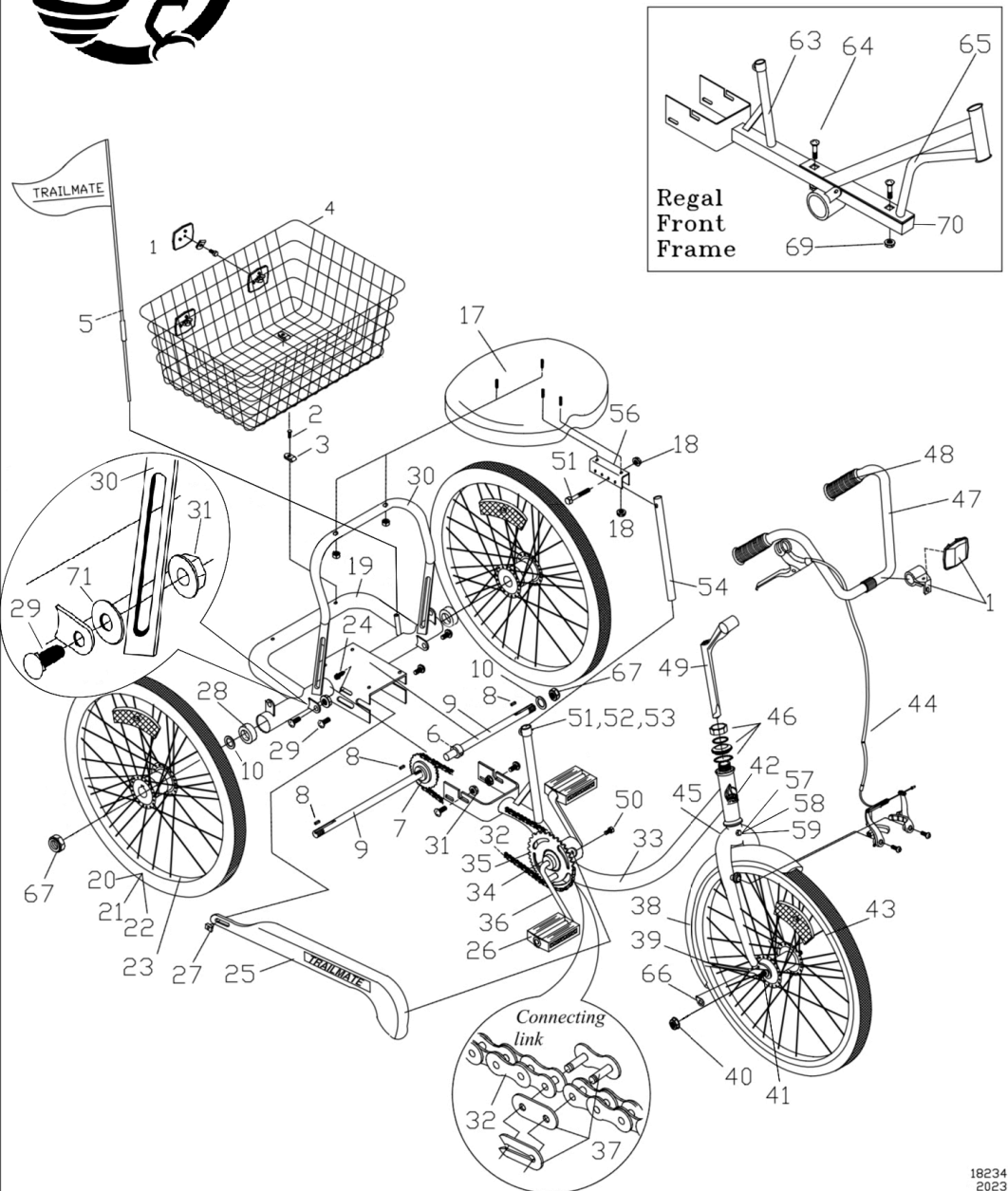


**EZ ROLL REGAL**



# DESOTO/REGAL ILLUSTRATED

## PARTS BREAKDOWN



# 24" DESOTO/REGAL PARTS LIST

ITEM	PART	DESCRIPTION	QTY
1	11871	REFLECTOR KIT TRIKE	1
2	12199	SCREW 14 x 3/4	4
3	12069	BASKET HOLD DOWN	4
4	11639	BASKET COATED TRIKE	1
5	12102	FLAG SAFETY W/POLE	1
6	12241	SET COLLAR 5/8"	2
7	11949	FREEWHEEL 22T & ADAPTER	1
8	12246	KEY SQUARE (AXLES) 3/16 x 5/8	3
9	19869	AXLE DESOTO/REGAL DRIVE	2
10	12240	WASHER SPACER 1 x 41	3
17	11894	SEAT WESTERN SADDLE	1
18	12175	NUT 5/16 - 18 FLANGED	5
19	14272	FRAME TRIKE REAR	1
20	11961	TIRE 24 x 1.75 W/TUBE	3
21	20201	TUBE 24 x 1.75	3
22	11985	RIMSTRIP 24 x 1.75	3
23	20159	WHEEL 24x1.75 ALLOY REAR	2
24	20541	SCREW (CHAINGUARD) 8 x 1/2	1
25	11708 11709	CHAINGUARD DESOTO OR REGAL	1
26	11857	PEDALS 1/2" PAIR	1
27	12253	NUT U-TYPE FOR #8 SCREW	1
28	11643	BEARING AXLE 5/8	4
29	12218	CARRIAGE BOLT 3/8 x 16 x 3/4	6
30	12075	SISSY BAR DESOTO	1
31	12178	NUT 3/8 - 16 FLANGED	6
32	12918 11682	CHAIN 109 PITCH DESOTO OR 123 PITCH REGAL	1
33	14268	FRAME DESOTO FRONT	1
34	11697	CRANK BEARING SET COMPLETE	1
35	11934	SPROCKET 36T 1/2 x 1/8	1
36	11695	CRANK 5 - 1/2"	1

ITEM	PART	DESCRIPTION	QTY
37	11679	CONNECTING LINK	1
38	11747	FENDER 24" FRONT W/BACKET	1
39	11764	FENDER BRACE 24"	1
40	12176	NUT 5/16 - 24 HEX	2
41	20576	FENDER BRACE SCREW	2
42	11718	DECAL TM HEAD	1
43	20158	WHEEL 24 x 1.75 ALLOY FRONT	1
44	20019	BRAKE V CANTILEVER COMPLETE	1
45	19337	FORK 24" MWT CANTILEVER	1
46	11831	HEAD SET COMPLETE	1
47	11805	HANDLEBAR HI RISE	1
48	11801	GRIP BLACK DC 7/8	2
49	11813	STEM HANDLEBAR 9"	1
50	12188	SCREW 10 - 32 x 3/8	1
51	12212	SCREW 5/16 - 18 x 1-1/2	2
52	13226	CLAMP WASHER M8 (SEAT POST)	1
53	13227	CLAMP NUT M8 (SEAT POST)	1
54	20214	SEAT POST 9" x 1" OD STEEL	1
56	11898	BRACKET WESTERN SADDLE	1
57	12172	NUT 1/4 - 20 FLANGED	1
58	12204	SCREW 1/4 - 20 x 1 - 1/2	1
59	12232	WASHER 1/4	1
63	14271	FRAME REGAL MID	1
64	16595	SCREW 3/8 - 16 x 2	2
65	14270	FRAME REGAL FRONT	1
66	18867	FORK WHEEL RETAINER	1
67	19720	NUT 5/8 - 18 NYLON JAM INSERT	2
69	11068	NUT 3/8 - 16 NYLON INSERT	2
70	12242	PLUG TUBE 1 - 1/4 x .083W	1
71	12301	WASHER 3/8	2

# **DESOTO CLASSIC & EZ ROLL REGAL**

## **ASSEMBLY INSTRUCTIONS**

### **1. Preparation**

Remove parts from carton. Check air pressure & inflate tires to 35 psi. Make sure tires are properly seated on rims.

### **2. Rear Frame & Wheels**

Remove lock nuts (67) from axles & tape from key squares (8) on axle ends leaving key squares in the keyways. Slide washers (10) up against bearing & align wheel keyway with key square on axles pushing the wheel up against bearing. Install nut (67) on axle (**Do not overtighten**). **IMPORTANT:** Be certain axle thread fully engages nylon portion of the nut when tightening. If there is any side-to-side movement of axles loosen set screw in collars (6) slide collars to eliminate movement & re-tighten.

### **3. Frame Assembly**

Slide front frame Desoto (33) or mid frame Regal (63) into rear frame (19) as far as possible. Install 4 carriage bolts (29) through slots in sides of transmission box. Ensure square sides of bolts seat into each slot. Install nuts (31) on bolts. **DO NOT** tighten fully at this time.

### **4. Front Fender & Wheel**

Install front wheel in slots of fork with wheel retainer (66) tabs seated in holes of the fork. Remove bolt, washer & nut from fork and re-install through fender tab. Remove 2ea screws from bottom of fork (41) & reinstall over fender brace (39). Check that wheel is centered between fork & tighten nuts.

### **5. Pedals**

Screw pedal (32) marked "R" in right Side of crank in clockwise direction. Screw pedal marked "L" in left side in counter-clockwise direction.

### **6. Chain "KEEP FINGERS CLEAR"**

Install drive chain (32) over front & rear sprockets & join together with connecting link & spring clip (37) using pliers. Slide front & rear frame apart until chain is tight. Secure & tighten all 4 carriage bolts (29). Rotate pedal several times to check that chain is running freely. If binding occurs the chain may need to be loosened until eliminated. Chain binding can be the result of a misaligned sprocket. Re-positioning of the sprocket (7) or re-squaring of the front/rear frame may correct this problem.

# **DESOTO CLASSIC & EZ ROLL REGAL**

## **ASSEMBLY INSTRUCTIONS**

### **7. Chainguard**

Place chainguard (25) over chain & slide rear under top of transmission box rear. Attach using screw & u-nut on chainguard (24) & (27). Before tightening line up hole in front mounting bracket by removing & re-installing screw (50). Tighten both ends until chainguard is lined up. Turn pedals to ensure chain does not rub on chainguard. Adjust front & rear alignment of chainguard if it does until rubbing ceases.

### **8. Western Saddle Seat & Sissy Bar**

Secure sissy bar (30) to the 2 studs on bottom of the seat (17). Sissy bar should be installed so the top curves to the rear of the trike. Remove hardware (55) & (18) from seat-mounting bracket (56) & install on the 2 remaining studs on bottom of seat (17). Secure seat post (54) back on to bracket (56) using any of the 4 sets of holes in the bracket

**NOTE:** These holes will determine the distance sitting from the handlebar. Attach sissy bar long slotted holes to the 2 tabs welded to rear axle housing. Install washers (71) in between sissy bar & tabs then secure with carriage bolts (29) and nuts (31) **DO NOT** tighten at this time.

### **9. Handlebar**

Slide handlebar (47) through clamp on stem (49) with portion of long bolt to rear. Install clear reflector & bracket (1). Install stem (49) into fork (45) until line marked on stem is not visible. Align handlebar to fork as it faces straight ahead & tighten bolt in stem firmly. **DO NOT** overtighten as this can damage fork tube. Check that headset (46) is tight **DO NOT** overtighten as this can damage fork bearings. Fork should rotate freely without binding. Slide hand brake lever (44) onto right side of handlebar & loosely tighten. Slide hand grips (48) on handlebar until they bottom out. A small amount of soapy water placed inside can help make installation easier. **NEVER** use oil or other lubricants. Slide handbrake lever lever against grip, adjust position & secure tightly.

### **10. Cantilever Brake Installation**

Insert "ball" end of cable into round slot of brake lever. Slide open end of cable through cable guide & cable guide into cable guide holder. Slide cable boot onto cable (open end first). Feed brake cable wire through hole on the lock bolt (cable clamp) & snugly tighten clamp. Pull slack out of cable so brake pad faces are within  $\frac{1}{8}$ " of the wheel.

# **DESOTO CLASSIC & EZ ROLL REGAL** **ASSEMBLY INSTRUCTIONS**

## **11. Basket**

Place basket (4) on rear frame immediately behind sissy bar & centered between the rear wheels. Secure basket using tabs (3) & screws (2) into the holes in rear frame & top of transmission box. Basket may have to be adjusted to line up holes with basket wires & hardware.

## **12. Reflectors & Flag**

Install 2 ea red reflectors (1) on back of basket using reflector clips & screws. Reflectors should be about 1 foot apart. Install clear wheel reflectors (1) by placing between spokes as near to the rim as possible. Place safety flag (71) in flag holder on rear frame.

## **13. Final Check**

Review all instructions, check all hardware for tightness, re-adjust seat & handlebar as necessary, check for extra or missing parts.

# **MAINTENANCE & INSPECTION**

## **REGULAR MAINTENANCE: BI-MONTHLY**

1. Keep all painted parts clean & waxed for long-lasting luster.
2. Spray chrome parts with recommended coating & let sit overnight for penetration.
3. Lubricate following: Seat pivot points, axle shafts, pedal bearings, chain (turn/spray).
4. When storing over prolonged periods turn upside down to prevent flat spots on tires. If stored outside, cover to protect finish & moving parts.

## **PREVENTATIVE MAINTENANCE: EVERY SIX MONTHS**

*These are services that may need to be performed by your local bicycle shop*

1. Check tires for wear, rim cuts & valve core alignment.
2. Check wheels for cracks & proper alignment.
3. Check brakes for proper operation.
4. Clean & repack all bearings.
5. Check for worn bearings, cones & cups, adjust all cones.
6. Check chain adjustment & clean as needed.
7. Check for loose bolts, nuts & other hardware.

## **INSPECTION: REGULAR BASIS**

1. Brakes: Ensure brakes engage when brake lever is pressed.
2. Wheels: Check wheels for alignment.
3. Pedals: Inspect bearings, make sure tightly attached to crank.
4. Handle Grips: Replace worn or loose grips.
5. Chain: Check proper tightness, if damaged replace immediately.
6. Seat: Adjust for rider comfort & safety, check for rips, tears.
7. Tires: Inflated to proper tire pressure as indicated on sidewall.
8. Chainguard: Replace if damaged or missing immediately.
9. Frame: Replace damaged frame immediately.

# **TRAILMATE**

6620 Suemac Place  
Jacksonville, FL 32254  
(888) 518-3443  
(904) 503-8573

Visit us at [www.trailmate.com](http://www.trailmate.com)

For service or to order  
Parts please contact  
your local Trailmate  
dealer.

This is a recreational unit, not designed for excessive speeds or misuse.

Do not brake or turn at high speeds. This may cause cycle to roll over. Careless operation may cause rider to lose control & result in **serious injury**.

## **Things to know before riding your cycle:**

1. Know your local bicycle laws & wear a helmet
2. Do not exceed recommended weight limit of 250lbs
3. No more than one rider at a time
4. Do not stand on unit
5. Be sure to install safety flags
6. Wear light-colored clothing & protective gear
7. Do not ride at night
8. Children must be supervised by an adult at all times

## **Trailmate Limited Warranty**

Trailmate guarantees each cycle product against all defects in materials and workmanship for a period of 90 days from date of purchase. Tires and tubes are not covered by this guarantee.

During this period, any part that is judged by the makers to be defective will be replaced free of charge. Any failure resulting from accident, abuse, neglect, normal wear, or improper assembly or maintenance by the owner is not covered.

Trailmate, Inc., further authorizes a lifetime frame guarantee and will replace any frame, at no cost to the buyer, providing that the item has not been used for rental and that:

- 1) The item has not been altered, repaired, or modified in any way
- 2) The item has not been subject to misuse, negligence, and/or an accident
- 3) Original ownership is established

Any parts under this guarantee on which claims are entered shall be returned for inspection with transportation charges prepaid by the claimant. Replacement parts will be shipped F.O.B. factory.

There are no warranties or guarantee, expressed or implied, written or oral, which extend beyond the description on the face hereof.