



# **Fun Cycle**



# **Owner's Manual**

# What's in the Box?



Front Frame Assembly



Rear Frame Assembly



Backrest



Chainguard



Flags



Seat



Front Wheel and Fender



Rear Wheels



Parts Bag

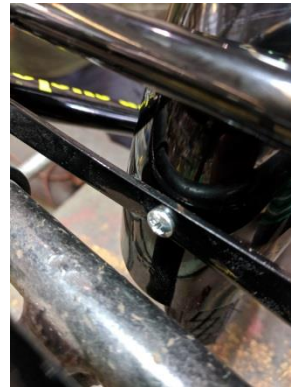
## Assembly Instructions

**Tools Required:** 3/8" wrench, 1/2" wrench, 9/16" wrench, flat blade screwdriver, Phillips head screwdriver, Air Pump, Air Gauge, Allen wrenches, 15/16" socket wrench, Adjustable wrench, pliers, rubber mallet.

1. **Preparation:** Remove all parts from the box, and carefully unwrap all parts.
2. **Front Wheel:** Insert front wheel into the slots in the frame with the brake lever pointing forward and above the left frame tube. Tighten Loosely. Install the front fender over the wheel. Use the screw and nut to attach it to the main frame. A zip tie on the tire may be used to make this step easier. Tighten down the nuts for the front fender.



*Wheel set into frame with accompanying hardware*



*Screw installed on back of fender*

3. **Pedals:** Install pedals by threading the pedal marked "R" into the right side of the crank (clockwise) and the pedal marked "L" into the left side of the crank (counterclockwise).
4. **Drive Chain:** Install the drive chain by wrapping it around the two sprockets and then clipping the ends together with the connecting link, shown below. Adjust the wheel until the chain lines up. Install the brake strap onto the brake arm loosely. Tighten down chain adjusters until the chain is tight (approximately 3/4" up and down movement is permissible). Tighten down the wheel nuts. Rotate the crank and confirm that there is no binding. Adjust the wheel as necessary. Tighten down brake strap fully.



*Chain connecting link*



*Front assembly completed, prior to chain adjuster being tightened*

5. **Chainguard:** Install the chainguard using the first and third hole from bottom in the front and the hole on the fender brace in the back. Tighten down with the matching nuts and make sure that the chain does not rub anywhere on the chainguard. Adjust as necessary.



*Front chainguard installation*



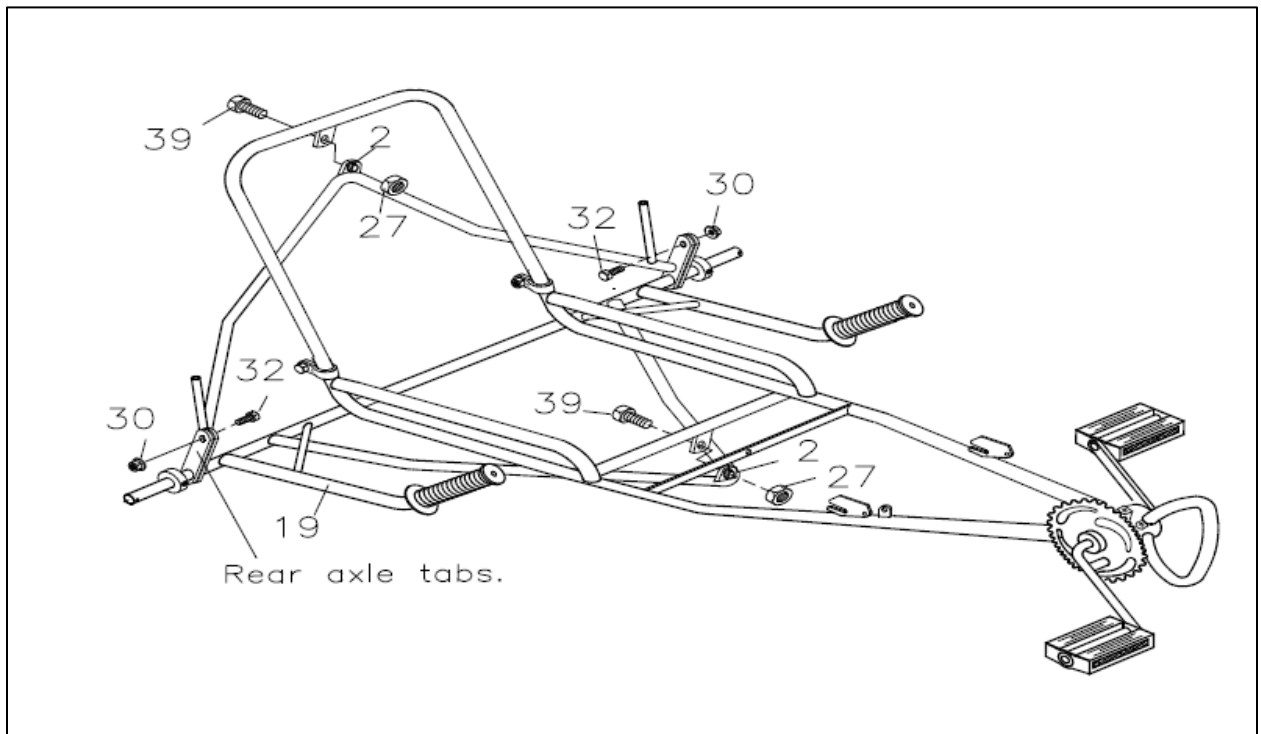
*Rear chainguard installation*

6. **Backrest:** Insert backrest onto front frame assembly with pivot mounting tub pointed downwards and to the rear. The backrest should slide evenly onto the frame about 1.5" to 2" on both sides. Note: This may be a tight fit and it may be necessary to lubricate the frame and tap the backrest on with a rubber mallet. Insert bolts into the backrest clamps from the outside and loosely install washers and nuts. Note: On some backrest clamps, it may be necessary to squeeze with pliers before inserting screws.



*Backrest installed into front frame*

- 7. Rear Frame:** Insert the screws in the holes on rear axle tabs. Loosely tighten with the nuts. Assemble front frame with the back rest on top of rear frame section (shown below). Insert screws into nylon bushings that are preassembled into frame sections. Secure with nylon jam nuts. Tighten nuts so that the frame sections are securely held together, but not so tight to cause binding when pivoted. Tighten backrest clamps. Tighten axle tab screws.



*Rear Frame assembly points*

8. **Rear Wheels:** Loosen set collar on axle. Slide one washer onto each rear axle against set collar. Slide wheel onto axle along with washer and another set collar. Secure cotter pin into end of axle. Slide outside set collar against cotter pin and tighten. Move remaining components against outside set collar and tighten inside set collar.



*Inner set collar and washer*



*Outer washer, set collar and cotter pin*

9. **Seat:** Place seat on back rest with the wide flap at top. Install flaps around outside frame and buckle from top to bottom and side to side. Sit in seat and readjust tension until comfortable.



*Seat buckle installation*

10. **Final Check:** Install the handle grips to the handlebars and put the safety flags into the holders. A bit of water inside the handle grips may make it easier to install them. Check all connecting bolts and screws for tightness. Pump tires to the proper pressure.

## **REGULAR MAINTENANCE:** Bi-Monthly

1. Keep all painted parts cleaned and waxed for a long-lasting luster.
  2. Spray all chrome parts with recommended protective spray coating (LPS-1, WD-40, etc.).  
When spraying with protective coatings, it is recommended that you let parts set overnight so the coating will penetrate.
  3. Lubricate the following:
    - a. Pivot points at top and bottom of seat
    - b. Axle shafts
    - c. Inside bearings of both pedals
    - d. Chain – turn pedal crank forward and spray freely
  4. When storing over prolonged periods, turn upside down to prevent flat spots from occurring on the tires. If stored outside, cover to protect finish and moving parts.
- 

## **PREVENTATIVE MAINTENANCE:** Every Six Months

These are services that should be performed by your local bicycle shop. A fee may be charged.

1. Check tires for wear, rim cuts, and valve core alignment (usually caused by improper air pressure).
2. Check wheels for cracks and alignment.
3. Check brakes for proper operation.
4. Clean and repack all bearings and adjust all cones.
5. Check for worn bearings, cones, and cups.
6. Check chain for adjustment and clean as needed.
7. Check for loose bolts and nuts.

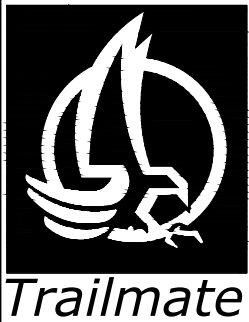
Attention: While your unit is new, some noises may occur when the unit is breaking in. Should they continue for more than 30 days, see your local bike shop.

---

## **INSPECTION**

Check the following, as it applies to your cycle, on a regular basis:

1. Coaster brake – Make sure the brake engages, by pedaling backwards.
2. Wheels – Check wheels for alignment.
3. Pedals – Inspect pedal bearings and make sure pedal is tightly attached to crank.
4. Handle grips – Replace worn or loose grips.
5. Chain – Check for proper tightness. Replace damaged chain immediately.
6. Seat – Adjust seat for rider comfort and safety.
7. Tires – Keep tires inflated to the recommended tire pressure, as indicated on the tire's sidewall.
8. Chainguard – Replace damaged or missing chainguard immediately.
9. Frame – Replace damaged frame immediately.



# FUN CYCLE ILLUSTRATED PARTS BREAKDOWN

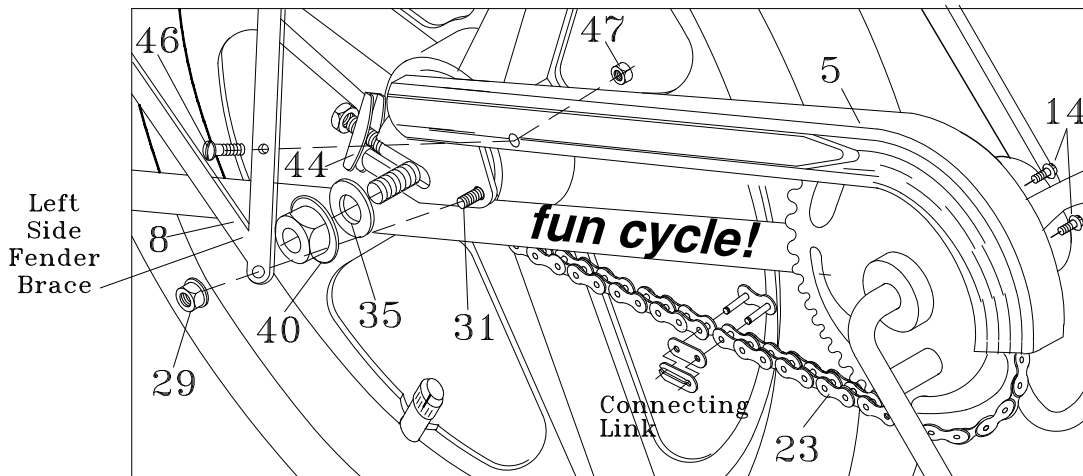
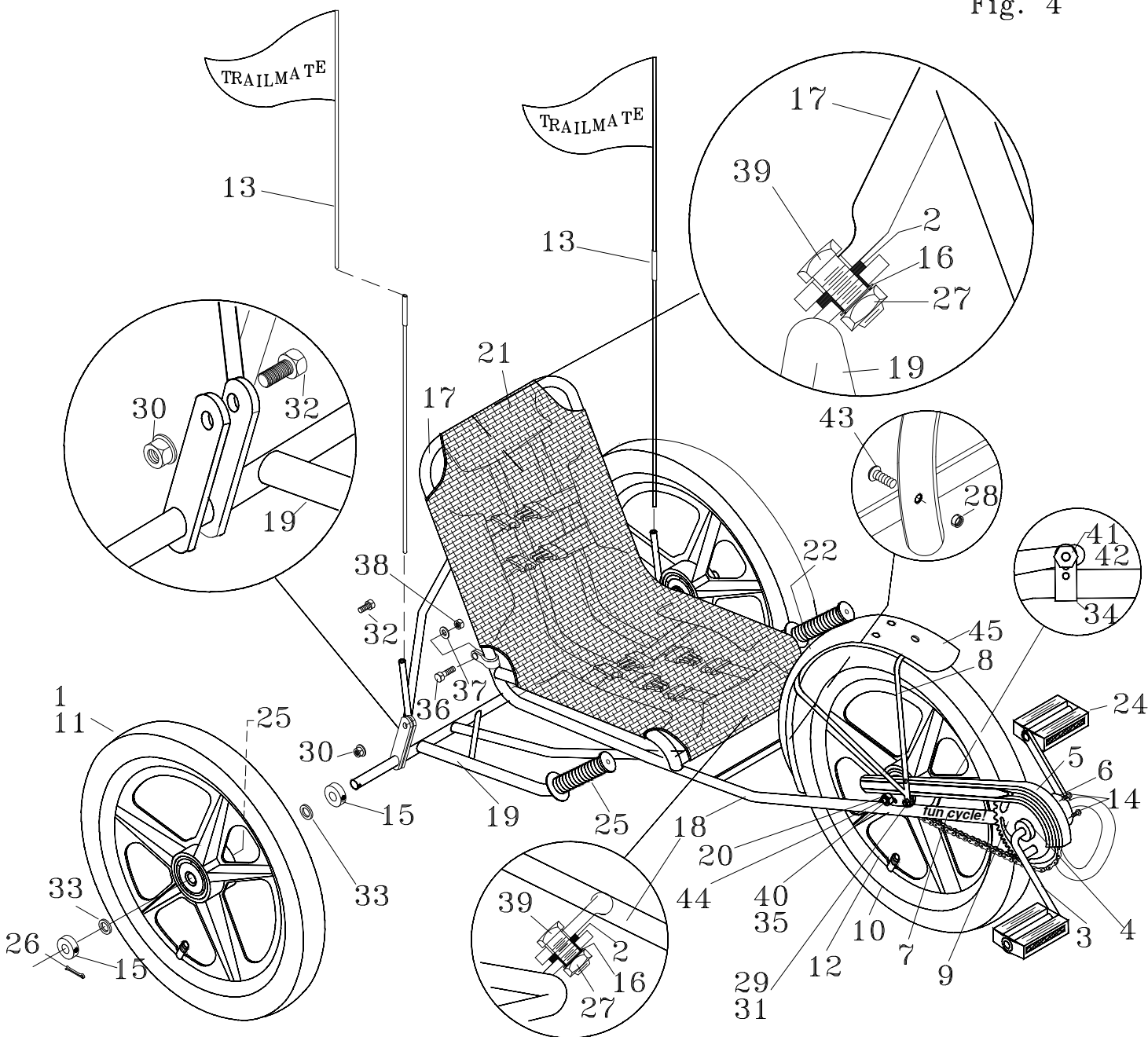


Fig. 4



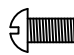

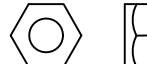


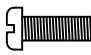
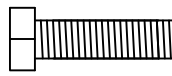
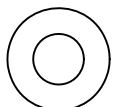
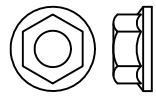

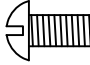
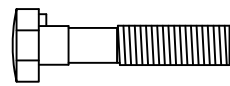
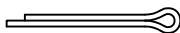
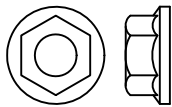








# FUN CYCLE PARTS LIST

| ITEM | PART  | DESCRIPTION                         | QTY. | ITEM | PART  | DESCRIPTION                          | QTY. |
|------|-------|-------------------------------------|------|------|-------|--------------------------------------|------|
| 1.   | 19561 | TIRE 20 X 2.25 BSW F/C,LR W/TU      | 2    | 24.  | 11857 | PEDAL 1/2" PR #643P10E141            | 1    |
| 2.   | 11162 | BUSHING NYLON 5/8 12SWS3151         | 2    | 25.  | 18175 | GRIP HANDLE YLW & BLK -530           | 2    |
| 3.   | 11695 | CRANK 5 1/2"                        | 1    | 26.  | 11070 | PIN COTTER 3/32X1                    | 2    |
| 4.   | 11697 | CRANK SET COMPLETE                  | 1    | 27.  | 11340 | NUT 1/2-13 NYLON JAM                 | 2    |
| 5.   | 11713 | CHAINGUARD F/C                      | 1    | 28.  | 12170 | NUT 10-32 HEX KEPS                   | 3    |
| 6.   | 11718 | DECAL TM HEAD                       | 1    | 29.  | 12172 | NUT 1/4-20 FLANGED                   | 2    |
| 7.   | 11728 | DECAL FUNCYCLE SIDE RAIL            | 2    | 30.  | 12178 | NUT 3/8-16 FLANGED                   | 2    |
| 8.   | 20288 | FENDER BRACE FC                     | 1    | 31.  | 12197 | SCREW 1/4-20X1/2 RHMS (frame welded) | 2    |
| 9.   | 11934 | SPROCKET 36T 1/2X1/8-TRK/BP/FC      | 1    | 32.  | 12224 | SCREW 3/8-16X3/4 HHCS                | 2    |
| 10.  | 11957 | TIRE 20X1.75 BSW-DES/FC W/TUBE      | 1    | 33.  | 19640 | WASHER 5/8 SAE                       | 4    |
| 11.  | 12057 | WHL 20" MAG F/C REAR W/BRG          | 2    | 34.  | 12279 | CLAMP (BRAKE STRAP) SHIMANO          | 1    |
| 12.  | 12058 | WHL 20" MAG F/C W/CB HUB&HDW        | 1    | 35.  | 12301 | WASHER 3/8 FLAT SAE                  | 2    |
| 13.  | 12102 | SAFETY FLAG W/O BRACKET             | 2    | 36.  | 13225 | CLMP BOLT M8X38MM LG HH              | 2    |
| 14.  | 12188 | SCREW 10-32X3/8 SLTD HWH T/F/S      | 2    | 37.  | 13226 | CLMP WASHER M8 FLAT                  | 2    |
| 15.  | 12241 | SET COLLAR 5/8"                     | 4    | 38.  | 13227 | CLMP NUT ACORN M8 HEX                | 2    |
| 16.  | 12273 | RETAINING RING                      | 2    | 39.  | 18764 | SCREW 1/2-13X1-1/4 HHCS ZC           | 2    |
| 17.  | 13182 | FRAME F/C BACK REST <u>ASSEMBLY</u> | 1    | 40.  | 19153 | NUT AXLE CB                          | 2    |
| 18.  | 13184 | FRAME F/C FRONT                     | 1    | 41.  | 19168 | NUT BRAKE STRAP                      | 1    |
| 19.  | 13190 | FRAME F/C REAR                      | 1    | 42.  | 19169 | SCREW BRAKE STRAP                    | 1    |
| 20.  | 19167 | SPROCKET 18T F/C                    | 1    | 43.  | 19171 | SCREW 10-32X3/8 RHMS                 | 3    |
| 21.  | 19278 | SEAT FUN CYCLE YELLOW               | 1    | 44.  | 20028 | CHAIN ADJUSTER COMPLETE              | 2    |
| 22.  | 19325 | DECAL "DO NOT STAND ON CYCLE"       | 1    | 45.  | 11745 | FENDER 20" MWT F/C                   | 1    |
| 23.  | 11693 | CHAIN/CL 73 PITCH F/C               | 1    | 46.  | 20307 | SCREW RHMS 8/32 X 3/8" FC/BP         | 1    |
|      |       |                                     |      | 47.  | 20308 | NUT HEX 8/32 FC/BP                   | 1    |

## ILLUSTRATED PARTS LIST (FUN CYCLE)

|   |  |   |  |  |  |
|---|--|---|--|--|--|
| <p>ITEM #41 PART #19168 (1) NUT BRAKE STRAP</p>  | <p>ITEM #28 PART #12170 (3) NUT #10-32 HEX</p>    | <p>ITEM #43 PART #19171 (3) SCREW #10-32 X 3/8"</p>                        | <p>ITEM #32 PART #12224 (2) SCREW #3/8-16 X 3/4"</p>    | <p>ITEM 11340 (2) NUT #1/2-13 NYLON JAM</p>     |  |
| <p>ITEM #29 PART #12172 (2) NUT #1/4-20</p>      | <p>ITEM #38 PART #13227(2) CLAMP NUT</p>          | <p>ITEM #42 PART #19169 (1) SCREW #10-32 X 1/2" SCREW FOR BRAKE STRAP</p>  | <p>ITEM #39 PART #18764 (2) SCREW #1/2-13 X 1 1/4"</p>  | <p>ITEM #33 PART #19640 (2) WASHER 5/8 SAE</p>  |  |
| <p>ITEM #30 PART #12178 (2) NUT #3/8-16</p>      | <p>ITEM #37 PART #13226 (2) WASHER (THICKER)</p>  | <p>ITEM #31 PART #12197 (2) SCREW #1/4-20 X 1/2" (frame welded)</p>        | <p>ITEM #36 PART #13225 (2) CLAMP BOLT</p>               | <p>ITEM #26 PART #11070 (2) COTTER PIN</p>      |  |
| <p>ITEM #40 PART #19153 (4) NUT AXLE</p>          | <p>ITEM #35 PART #12301 (2) WASHER</p>            | <p>ITEM #46 PART #20307 (1) SCREW # RHMS 8/32 X 3/8" FC/BP</p>             | <p>ITEM #34 PART #12279 (1) CLAMP (BRAKE STRAP)</p>     |  |  |
|   |  | <p>ITEM #47 PART #20308 (1) NUT HEX 8/32 FC/BP</p>                         |  |  |  |



**Trailmate**

1851 67<sup>th</sup> AVE East

Sarasota, FL 34243

Tel: (941) 755-5511

Fax: (941) 758-5141

Visit us @ [www.trailmate.com](http://www.trailmate.com)

**For service or to order  
replacement parts  
please contact your  
local Trailmate dealer.**

# FUN CYCLE

This is a recreational unit, not designed for excessive speeds or misuse.

Do not brake or turn at high speeds. This may cause cycle to roll over. Careless operation may cause rider to lose control and result in **serious injury**.

## Things to know before riding your cycle:

1. Know your local bicycle laws and wear a helmet.
2. Do not exceed the recommended weight limit of 250 lbs.
3. No more than one rider at one time.
4. Do not stand on unit.
5. Be sure to install safety flags.
6. Wear light-colored clothing and protective gear.
7. Do not ride at night.
8. Children must be supervised by an adult at all times.

### Trailmate Limited Warranty

Trailmate, Inc., guarantees each cycle product against all defects in materials and workmanship for a period of 90 days from date of purchase. Tires and tubes are not covered by this guarantee.

During this period, any part that is judged by the makers to be defective will be replaced free of charge. Any failure resulting from accident, abuse, neglect, normal wear, or improper assembly or maintenance by the owner is not covered.

Trailmate, Inc., further authorizes a lifetime frame guarantee and will replace any frame, at no cost to the buyer, providing that item has not been used for rental use and that:

- 1) The item has not been altered, repaired, or modified in any way.
- 2) The item has not been subject to misuse, negligence, and/or an accident.
- 3) Original ownership is established.

Any parts under this guarantee on which claims are entered shall be returned for inspection with transportation charges prepaid by the claimant. Replacement parts will be shipped F.O.B. factory.

There are no warranties or guarantee, expressed or implied, written or oral, which extend beyond the description on the face hereof.