



SENIOR LIVING DESIGN COORDINATES

High Performance • Moisture Resistant • Bleach Cleanable

MAYER + **HEKMAN**
FABRICS CONTRACT



WEBSTER
WC930-007 Cafe



GATSBY
WC978-056 Dew



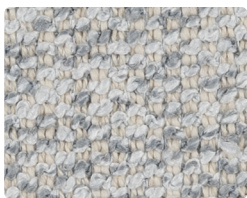
GATSBY
WC978-046 Lt. Grey



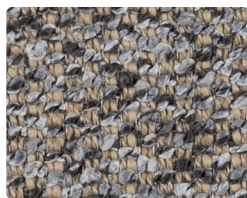
GATSBY
WC978-036 Dapper



CURATOR
WC921-006 Cloud



EDITOR
WC920-006 Mineral



EDITOR
WC920-000 Mushroom



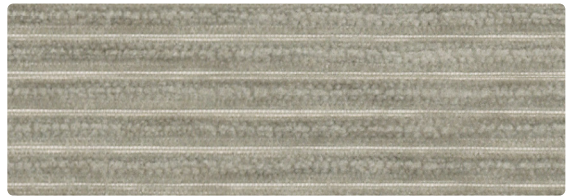
GALVESTON
GV-007 Cream



GALVESTON
GV-027 Buff



GALVESTON
GV-026 Stucco



CHANNEL
WC977-027 Stone



MINGLE
MG-047 Oyster



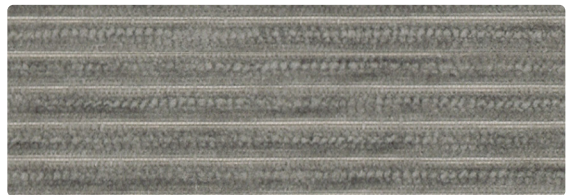
MINGLE
MG-007 Linen



MATKA
MT-057 Pumice



MATKA
MT-077 Fawn



CHANNEL
WC977-016 Smoke



HARPER
WC932-007 Lily

Shown at 75% scale.

Additional colors are available. Please refer to the Mayer Fabrics website.



WEBSTER
WC930-004 Arctic Blue



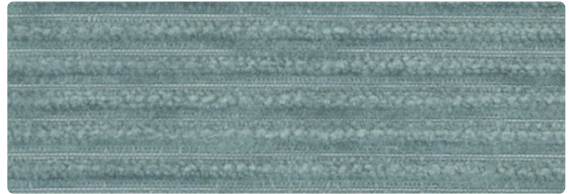
GATSBY
WC978-033 Opal



GATSBY
WC978-014 Indigo



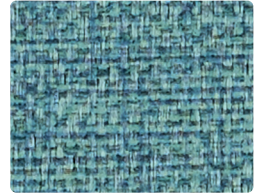
GATSBY
WC978-004 Midnight



CHANNEL
WC977-024 Powder



MINGLE
MG-026 Cloud



MINGLE
MG-013 Aqua



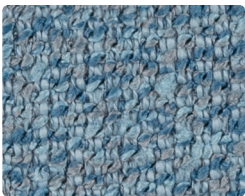
MATKA
MT-024 Seafoam



MATKA
MT-014 Cerulean



CURATOR
WC921-004 Ink



EDITOR
WC920-004 Water



EDITOR
WC920-014 Ink



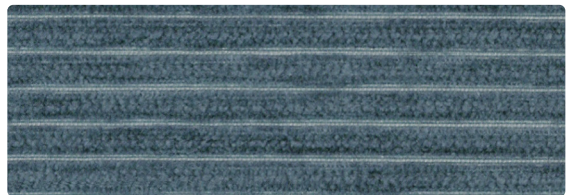
GALVESTON
GV-033 Agave



GALVESTON
GV-024 Denim



GALVESTON
GV-016 Winchester



CHANNEL
WC977-004 Slate



HARPER
WC932-004 Indigo

Shown at 75% scale.



WEBSTER
WC930-001 Cranberry



GATSBY
WC978-026 Petwer



GATSBY
WC978-016 Charcoal



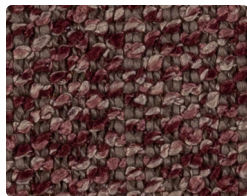
GATSBY
WC978-008 Plum



CURATOR
WC921-008 Rhubarb



EDITOR
WC920-009 Sandstone



EDITOR
WC920-005 Plumbery



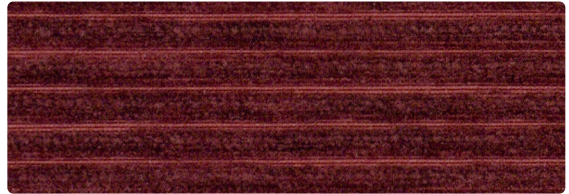
GALVESTON
GV-037 Cliff



GALVESTON
GV-040 Ground



GALVESTON
GV-001 Russet



CHANNEL
WC977-001 Port



MINGLE
MG-037 Haze



MINGLE
MG-020 Fog



MATKA
MT-021 Dusty Rose



MATKA
MT-031 Malbec



CHANNEL
WC977-029 Persimmon



HARPER
WC932-000 Walnut

Shown at 75% scale.

Additional colors are available. Please refer to the Mayer Fabrics website.



TECHNICAL INFORMATION

Senior Living Design Coordinates

Pattern 54"	Content and Backing	Certifications	Weight/ Linear Yd.	Pattern Repeat	Finish	Abrasion Wyzenbeek	Light- Fastness	Flammability	Cleaning- Code
CHANNEL <i>Directional</i>	100% Polyester Backing: Crypton®	GREENGUARD Gold	21.21 oz.	Random Match	Crypton® with Antimicrobial Silver Ion Technology	100,000^ Double Rubs	40 hours	Cal. 117-2013 NFPA 260/UFAC Class 1	W, C, BC
CURATOR <i>Directional</i>	100% Polyester Backing: Crypton®	GREENGUARD Gold	18.6 oz.	Random Match	Crypton® with Antimicrobial Silver Ion Technology	100,000^ Double Rubs	40 hours	Cal. 117-2013 NFPA 260/UFAC Class 1	W, C, BC
EDITOR <i>Directional</i>	100% Polyester Backing: Crypton®	GREENGUARD Gold	24.39 oz.	Random Match	Crypton® with Antimicrobial Silver Ion Technology	100,000^ Double Rubs	40 hours	Cal. 117-2013 NFPA 260/UFAC Class 1	W, C, BC
GALVESTON	80% Vinyl - Phthalate Free face, 20% Polyester backing	GREENGUARD	30 oz.	None	Soil & Stain Resistant Top Coat with Ink Resistant Technology	250,000^ Double Rubs	200 hours	Cal. 117-2013 NFPA 260/UFAC Class 1 FMVSS 302	BC, CFC
GATSBY <i>Directional</i>	100% Polyester Backing: Crypton®	GREENGUARD Gold	24.3 oz.	None	Crypton® with Antimicrobial Silver Ion Technology	100,000^ Double Rubs	40 hours	Cal. 117-2013 NFPA 260/UFAC Class 1	C, BC
HARPER <i>Directional</i>	51% Solution-Dyed Olefin, 49% Solution-Dyed Polyester Backing: Crypton®	GREENGUARD Gold	25 oz.	4" H, 4.25" V	Crypton® with Antimicrobial Silver Ion Technology	100,000^ Double Rubs	40 hours	Cal. 117-2013 NFPA 260/UFAC Class 1	W, C, BC
MATKA <i>Directional</i>	80% Vinyl - Phthalate Free face, 20% Polyester backing	GREENGUARD	30 oz.	Non- Matching	Soil & Stain Resistant Top Coat with Ink Resistant Technology	250,000^ Double Rubs	500 hours	Cal. 117-2013 NFPA 260/UFAC Class 1	WS, BC, CFC
MINGLE <i>Directional</i>	80% Vinyl - Phthalate Free face, 20% Polyester backing	GREENGUARD	30 oz.	None	Soil & Stain Resistant Top Coat with Ink Resistant Technology	250,000^ Double Rubs	300 hours	Cal. 117-2013 NFPA 260/UFAC Class 1 FMVSS 302	WS, BC, CFC
WEBSTER <i>Directional</i>	50% Solution-Dyed Olefin, 25% Solution-Dyed Polyester, 25% Polyester Backing: Crypton®	GREENGUARD Gold	24.2 oz.	2.375" H, 2.25" V	Crypton® with Anti- microbial Silver Ion Technology	100,000^ Double Rubs	40 hours	Cal. 117-2013 NFPA 260/UFAC Class 1	W, C, BC

CARE AND CLEANING INFORMATION

S: Solvent W: Water-Based Cleaner WS: Water/Solvent Cleaner

C: Crypton Cleaning CFC: Coated Fabrics Cleaning – Refer to Mayer website for complete cleaning info.

BC: Bleach Cleanable – 1 part bleach, 9 parts water = 10% bleach, 90% water solution. **Do not clean/disinfect fabric for longer than 10 minutes using the 10% bleach solution. Always rinse promptly with clean water after applying the bleach solution. Failure to do so will void any and all warranties.**

DYE TRANSFER DISCLAIMER

Certain clothing and accessory dyes (such as those used on denim jeans) may migrate to lighter colors. This phenomenon is increased by humidity and temperature and is irreversible. Mayer Fabrics will not assume responsibility for dye transfer caused by external contaminants. Please check compatibility when using this product in combination with painted or varnished surfaces.

ADDITIONAL INFORMATION

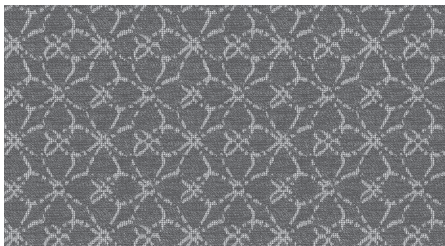
^Abrasion test results exceeding ACT Performance Guidelines are not an indicator of product lifespan. Multiple factors affect fabric durability and appearance retention.

Warranty: Please refer to the Mayer website for warranty information by pattern.

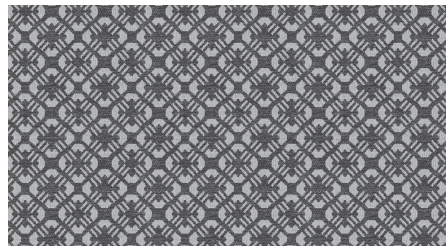
Custom Colors: All patterns can be custom colored. Minimum yardage applies.

Digital Swatch Card Color Matching: Due to color variations on different monitors and color printers, actual swatch colors may vary slightly. Please request a memo sample from Mayer Fabrics to ensure proper color representation.

Complete and current product information available at mayerfabrics.com.



HARPER



WEBSTER



These fabrics meet or exceed these ACT performance guidelines.
*Certification Marks owned by ACT®

©2024
HCSLDC2CD MF0324

HEKMAN
CONTRACT

MAYERFABRICS